

IP/Network Doorbell

Quick Installation Guide



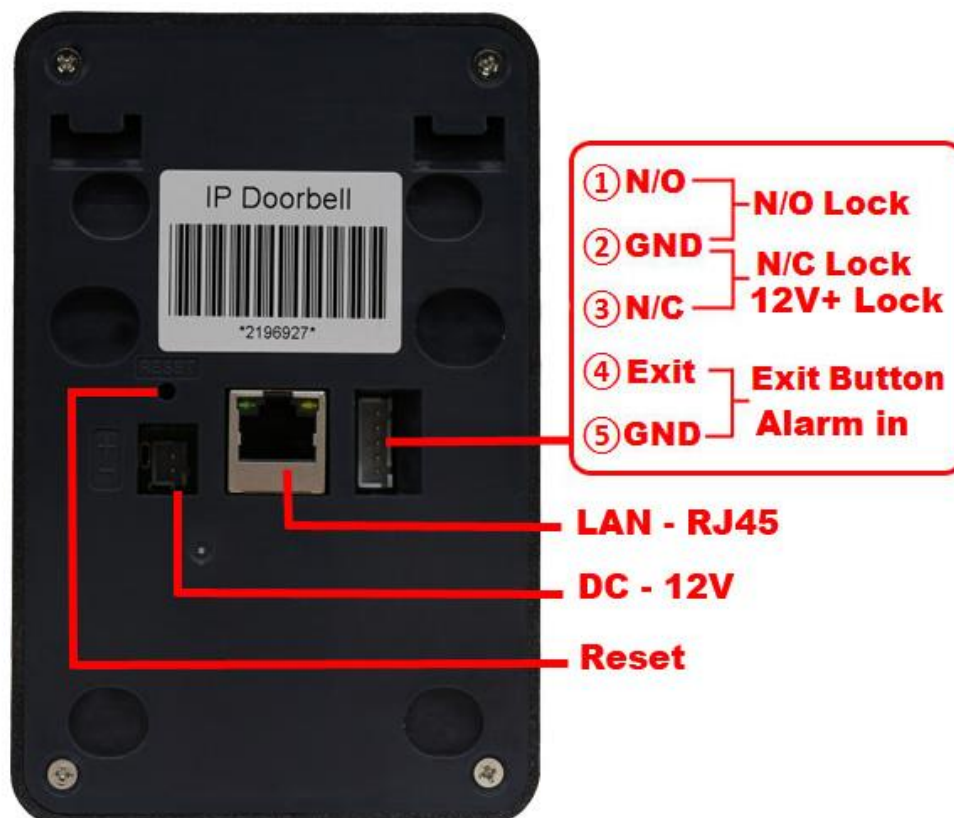
V3.1

1. Interfaces Instruction

1. Front Panel



2. Back Panel



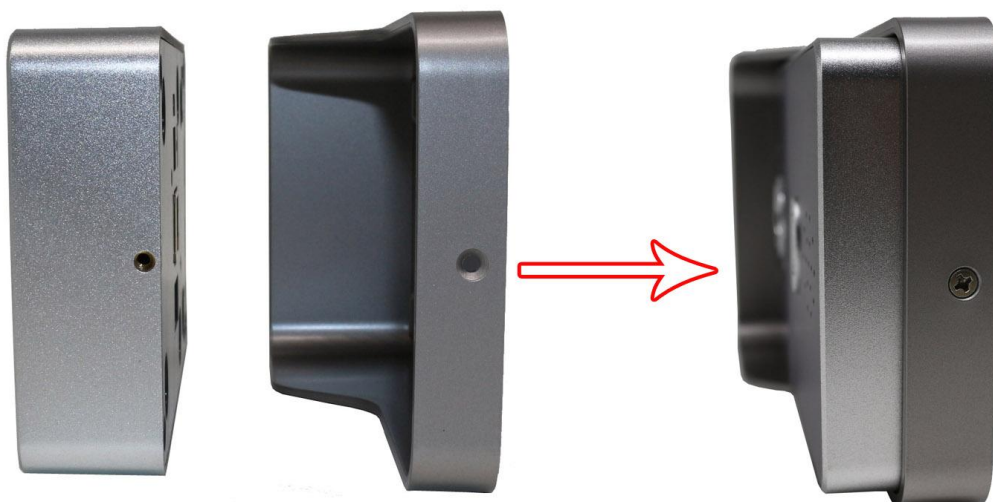
2. Doorbell Installation



1. Installed on Wall with 4pcs Screws



2. Installed with 2pcs Screws



Doorbell Mounting into Rain Cover

3. Mobile Phone APP

1. Install APP

- Scan the below QR Code.
- Search “Yoosee” on APP Store.
- Visit <http://www.yoosee.co> to download.

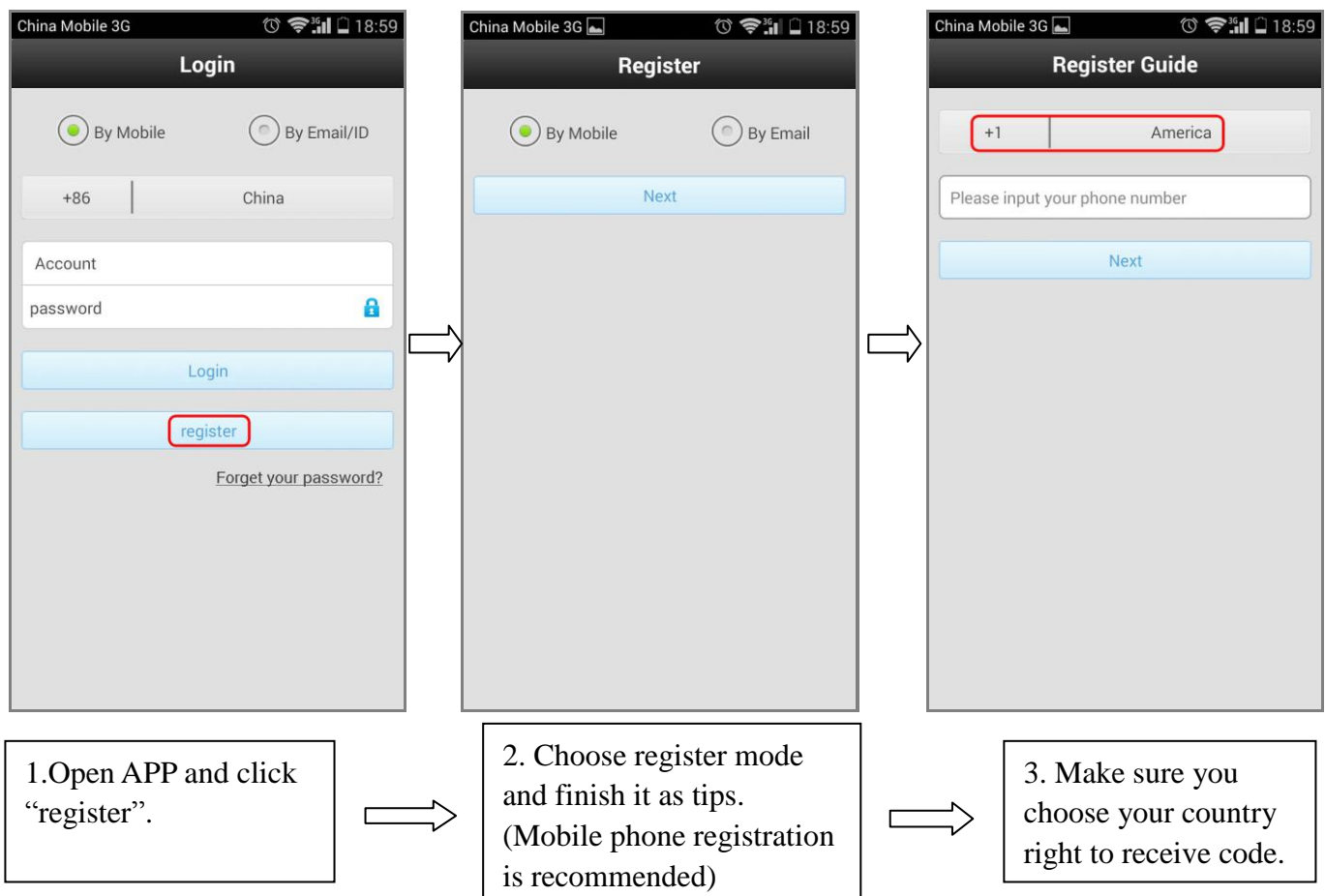
iOS



Android



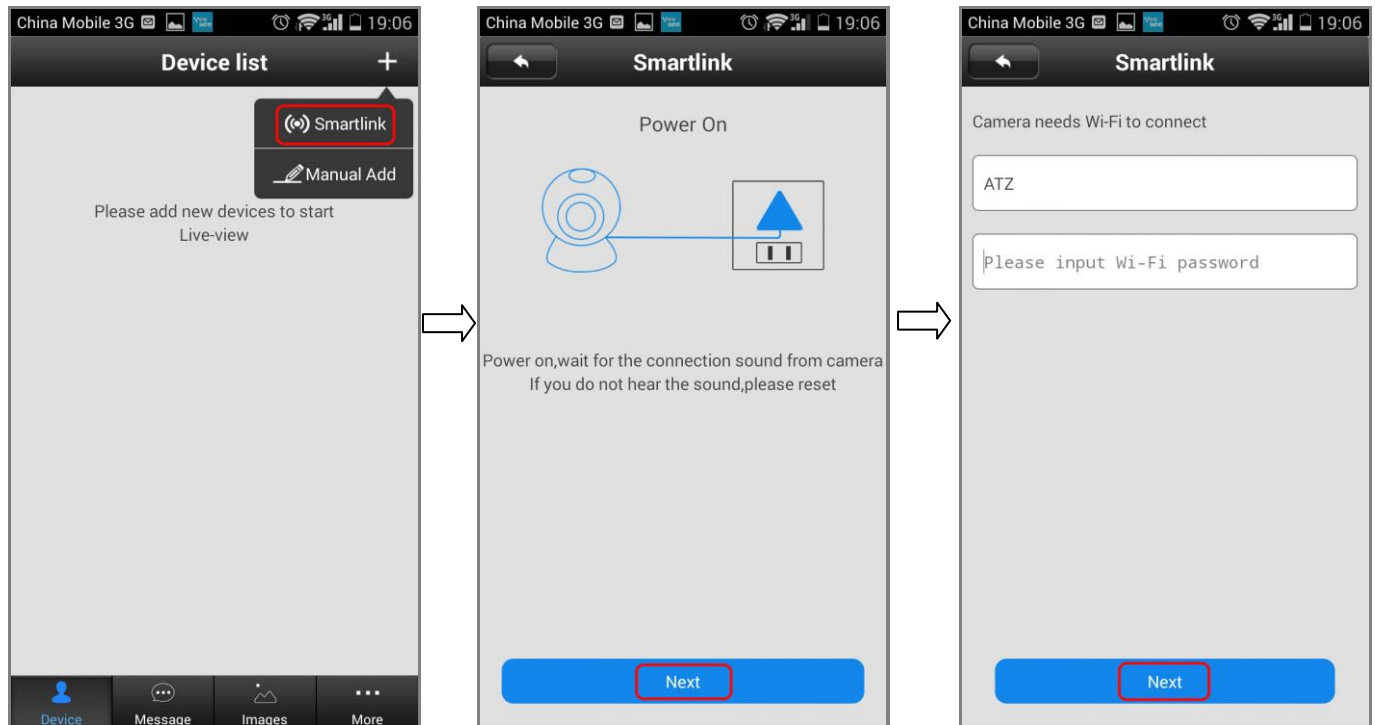
2. Register and login APP.



4. Network Configuration

1. Power on the doorbell and wait for starting. (It will have the sound tip if the doorbell starts).
2. Smartlink mode to make Wi-Fi connection - within 5 minutes with doorbell power on.

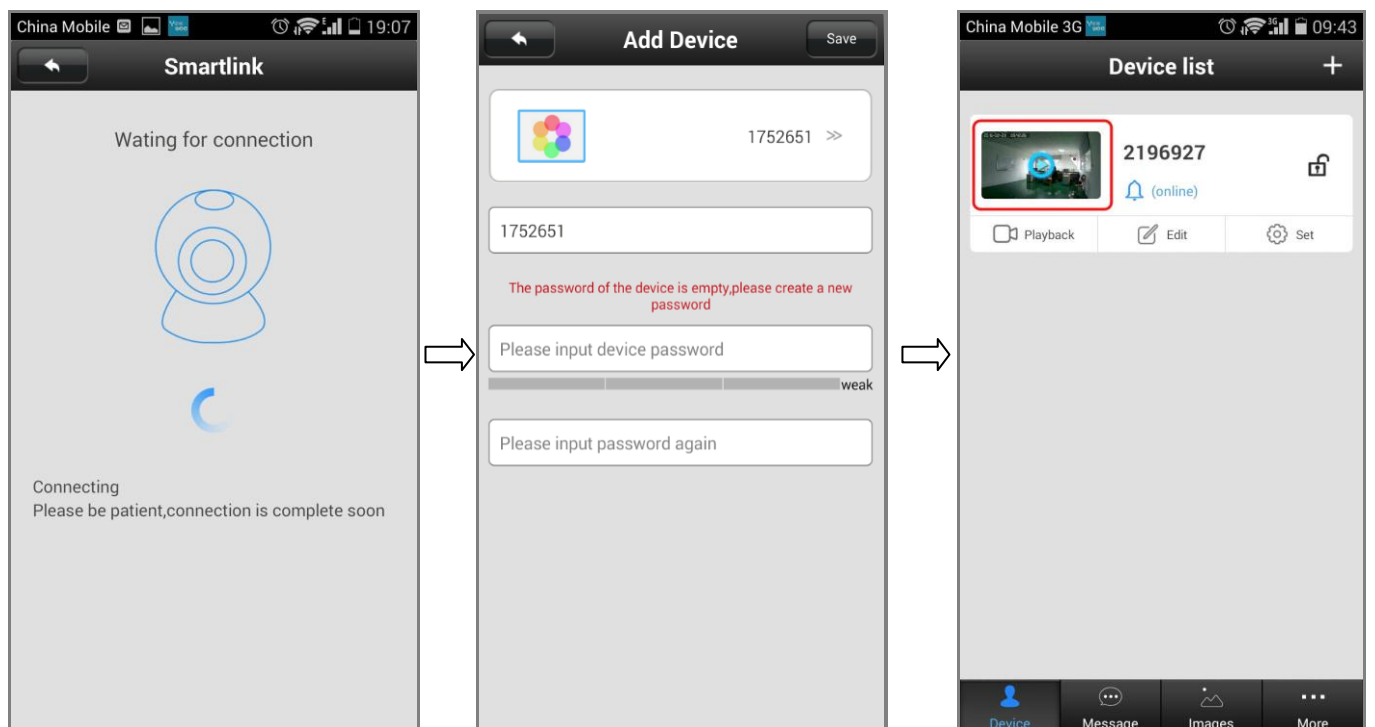
Tip: Ensure the Wi-Fi that you set can connect to the mobile phone or tablet normally.



1. Open the software. Click on “+” on the top right and choose “Smartlink”.

2. Operate as tips. Click “NEXT” when finished.

3. Input Wifi password and click “NEXT”.



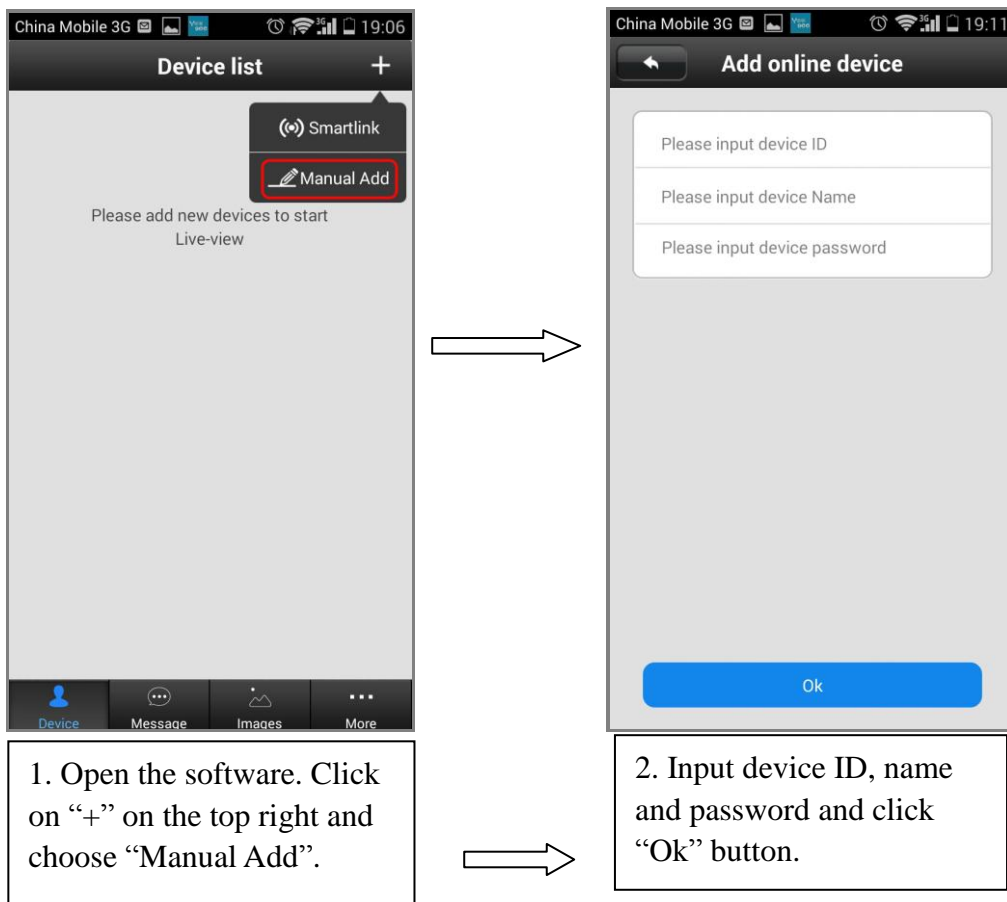
4. Wait for the WiFi connection.

5. Setup password after wifi settings and click “Save” button on top right.

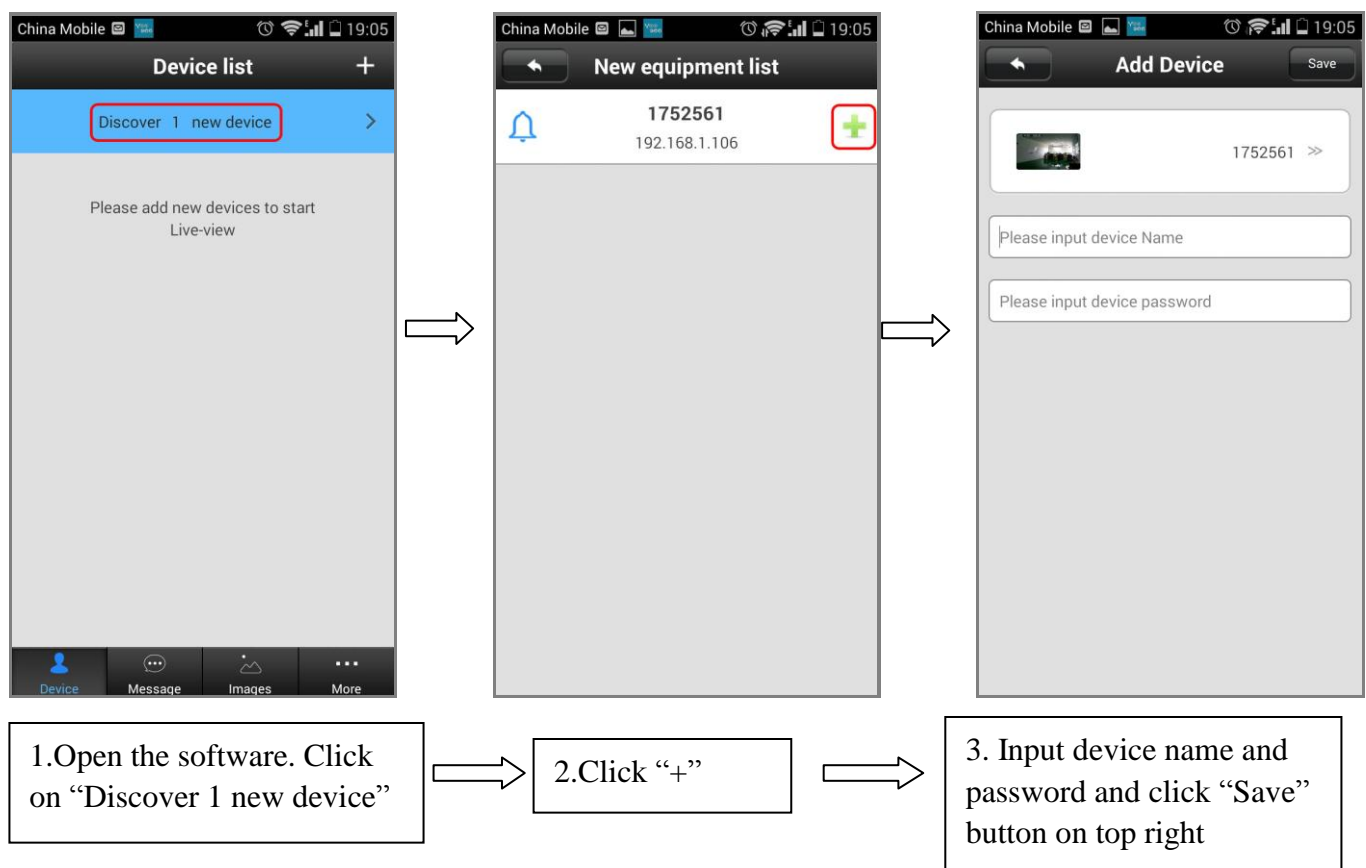
6. APP will automatically jump to the equipment list. Click device window, you can preview the video.

Remark: For security purpose, there is no default password, which need the user set the device password for the first time. **(Password must be 6-30 characters, including alphabetic and number.)**

3. Add doorbell remotely, choose “Manual Add”.

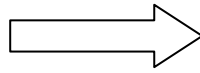


4. Connect doorbell in same LAN with RJ45.



5. Visitor Calling

1. Visitor press the Call button.



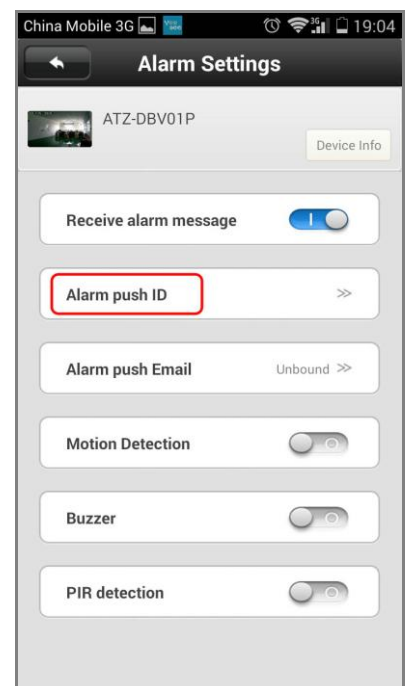
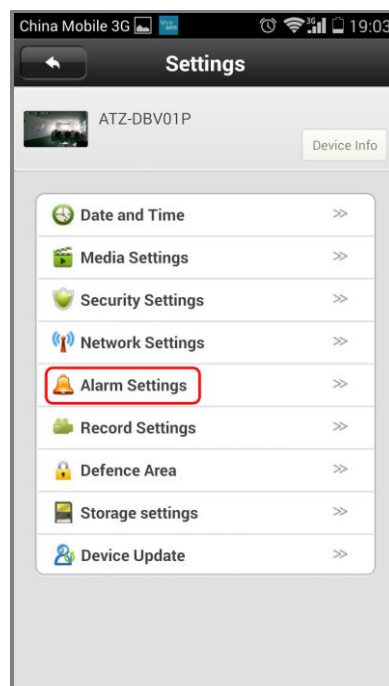
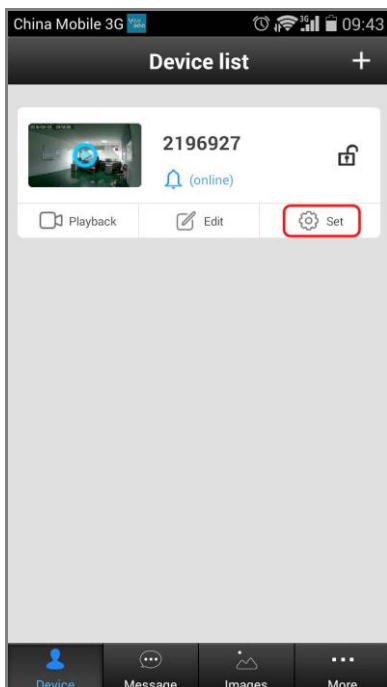
2. Popup message from APP, answer or hang up.



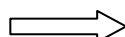
3. After answering, you can call intercom, take photos, open the door etc. Full duplex intercom call, which is more convenient to use.

6. Security Protection

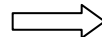
1. Alarm Settings



1. Click "Set"



2. Choose Alarm Settings



3. Check whether the receiving alarm information bar is on and whether your account is on Alarm push ID list.

Alarm Settings:

Receive alarm message: Opened by default. If closed, user cannot receive messages and alarm push.

Alarm push ID: Add the first mobile phone by default configuration for bell. Support Max. five accounts.

Alarm push Email: Binding mailbox. Bell will send visitor call and alarm images to the mailbox.

Motion Detection: Closed by default. The bell alarm acts when object moves if motion detection is open.

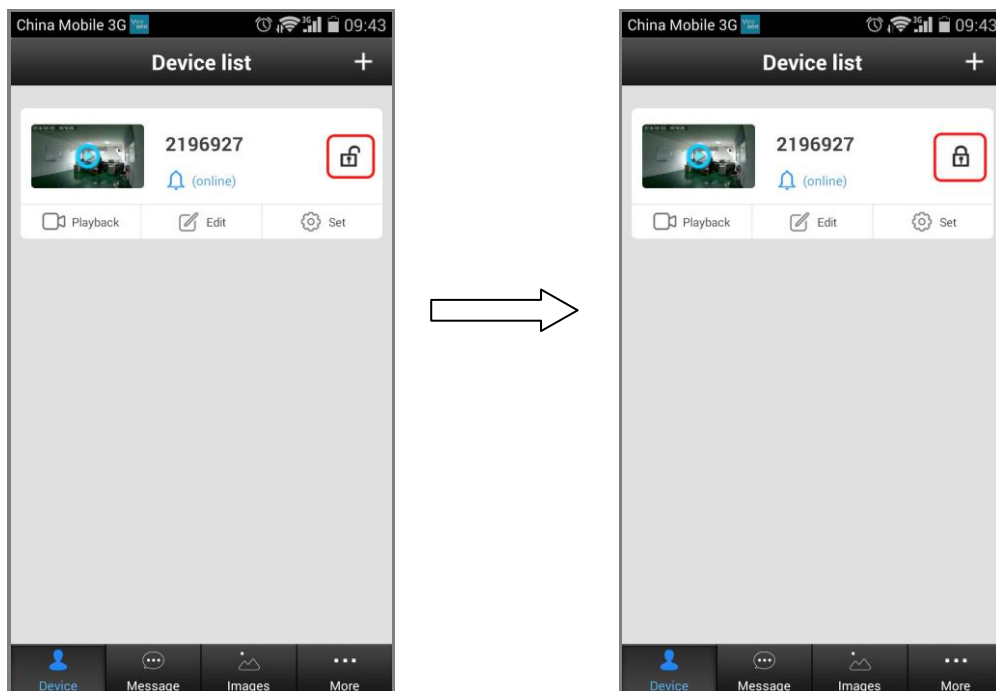
Buzzer: Closed by default. It will send out the alarm when the buzzer is open.

PIR (Human Infrared Detection): Closed by default. Capture warming is more sensitive and accurate.

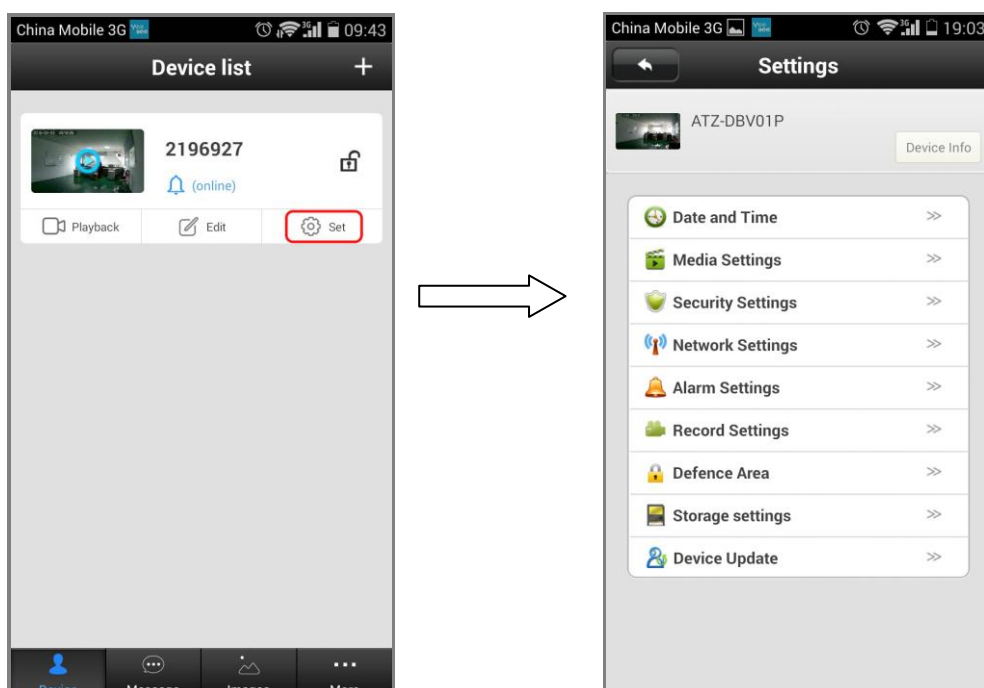
2. Protection and Removal

Remove Protection Mode: Removal protection by default. Your mobile phone will not receive the alarm.

Protection Mode: Your mobile phone will receive the alarm.



7. Device Other Information



Device Info: Display the current firmware information of the device.

Date and Time: Set device time, the default automatic time synchronization network.

Media Settings: Set image format (N/P) and reversal.

Security Settings: Modify Admin Password.

Network Settings: Switch the wired network and WiFi network.

Alarm Settings: Configure the door phone alarm information.

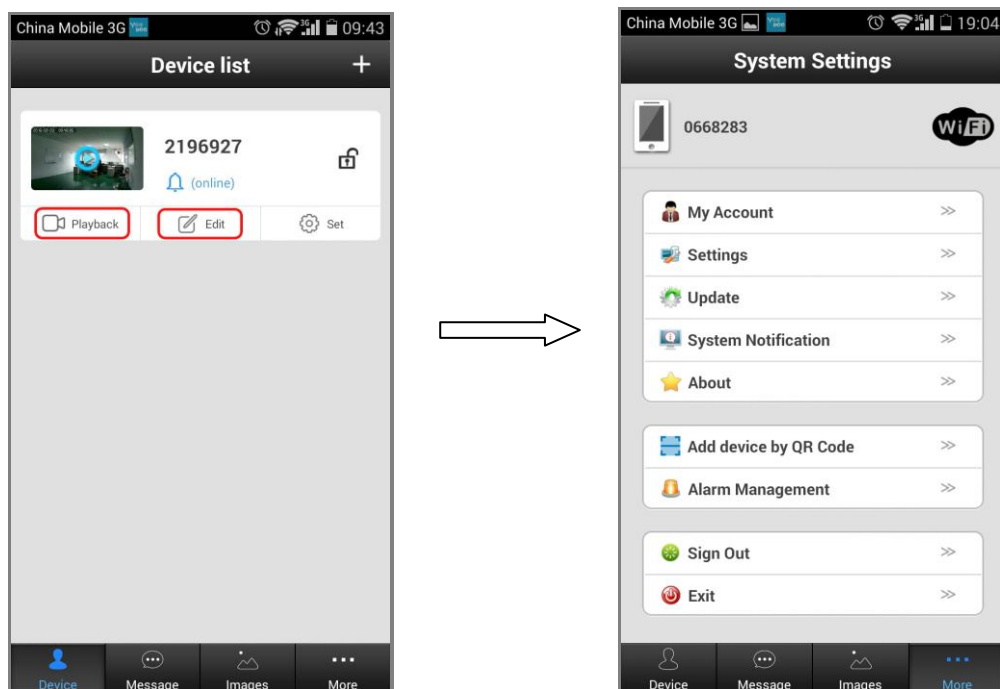
Record Settings: Set the recording mode (optional, need to work with TF card).

Defence Area: Not available

Storage Setting: Check the TF card information

Device Update: Check device firmware update

8. APP Function Introduction



Playback: Play TF card recording (optional).

Edit: Edit device name and password.

Device: Display the device list.

Message: Record the visitor and alarm messages.

Image: Record the screenshot.

More:

My Account: Check and configure information about current account, modify the account password.

Settings: Configuration alarm and call ring, automatically start and hang up, icon configuration.

Update: Check APP update version

System Notification: Important system notification

About: APP description and version

Add device by QR Code: As tips, scan the QR code to configure WiFi network and add IP doorbell.

Alarm Management: Configure alarm interval and alarm shielding device.

Sign Out: Sign out current account

Exit: Exit APP

9. Indoor Dingdong Chime/Bell

1. Learning Code
2. Distance: 30-80m
3. 52 Musics

Volume Control

Music Switch

LED Indicator



Pairing Program Instruction

1. Select music before pairing.
2. Activate Pairing – 2 ways as below:
 - a. Press both volume button and music button.
 - b. Long press volume button for 5 seconds.When either operation above is finished, hearing “Dong” with LED indicator flash, press call button on IP doorbell in 5 seconds. It means pairing succeed if selected music is played.
3. Two or more indoor bell pairing - Follow point 2 once again to get paired one by one.
4. All pairing memory clearance - Long press music button for 5 seconds.

Federal Communications Commission (FCC) Interference

Statement

This equipment has been tested and found to comply with the limits for a Class B digital device, pursuant to Part 15 of the FCC Rules.

These limits are designed to provide reasonable protection against harmful interference in a residential installation. This equipment generate, uses and can radiate radio frequency energy and, if not installed and used in accordance with the instructions, may cause harmful interference to radio communications.

However, there is no guarantee that interference will not occur in a particular installation. If this equipment does cause harmful interference to radio or television reception, which can be determined by turning the equipment off and on, the user is encouraged to try to correct the interference by one of the following measures:

- Reorient or relocate the receiving antenna.
- Increase the separation between the equipment and receiver.
- Connect the equipment into an outlet on a circuit different from that to which the receiver is connected.
- Consult the dealer or an experienced radio/TV technician for help.

This device complies with Part 15 of the FCC Rules. Operation is subject to the following two conditions:

(1) This device may not cause harmful interference, and (2) this device must accept any interference received, including interference that may cause undesired operation.

FCC Caution: Any changes or modifications not expressly approved by the party responsible for compliance could void the user's authority to operate this equipment.

RF exposure warning

This equipment complies with FCC radiation exposure limits set forth for an uncontrolled environment.

This equipment must not be collocated or operating in conjunction with any other antenna or transmitter.