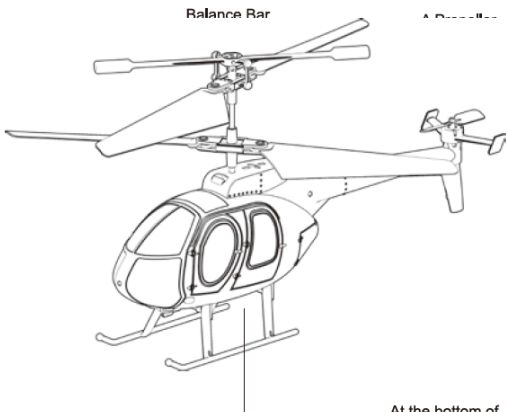


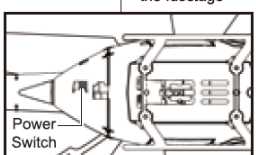
2.4G 3.5CH RC Helicopter Takeoff In Altitude Hold And Landing Version

Instruction Manual

Ages 14+

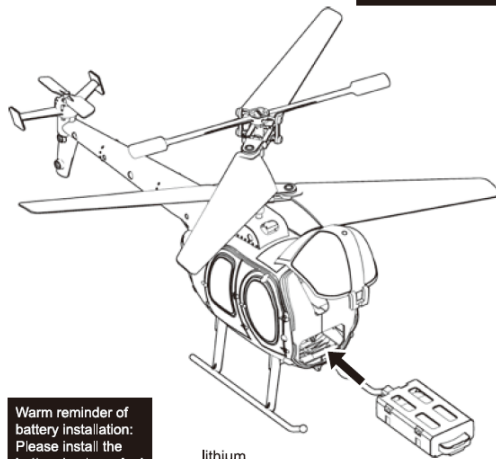


Helicopter applies 2.4G remote control system to enable multiple players compete without interference. It is easy to operate via remote control to control functions such as flying, Flips and rolls and altitude hold etc.

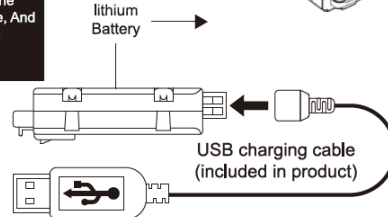


1

Battery Installation



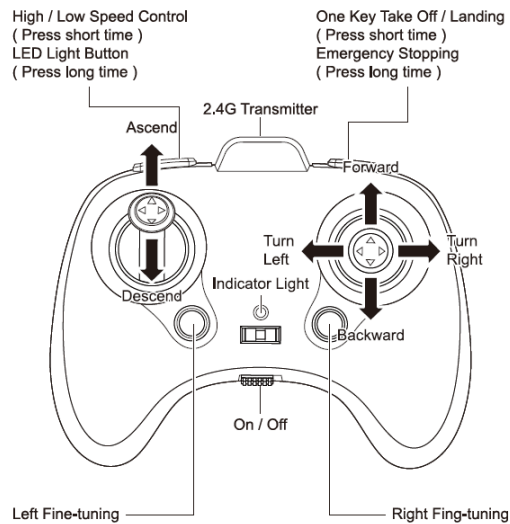
Warm reminder of battery installation: Please install the battery in place, And the flight of the aircraft will be unstable.



2

Know Your Remote Control

Operation board of remote control

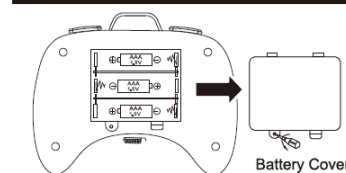


WARNING:

High / Low speed control: The helicopter at slow speed when you press the button and hear a sound of "di"; While it at high speed with a sound of "didl".

3

Install The Remote Batteries



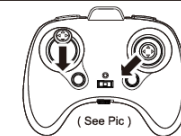
Use 3AAA Battery(not included)
Open the battery case and insert 3 AAA batteries by the correct polarity. Close the battery cover, Tighten the set screw!

Notes:

1. Ensure the polarity symbols on the batteries match the symbols inside the battery compartment.
2. Do not mix new and old batteries.
3. Do not mix different types of batteries.
4. When the remote control's indicator light flashes, Which indicates the remote control has low voltage. Please replace with new batteries.

Pre-takeoff Instructions

After the charging completes, Put the helicopter on level surface and turn the power switch to the "ON" position when the helicopter's LED light flashes, Power on the remote control to proceed pairing that the remote control's LED light turns from flashing to solid indicates. The process of pairing has been successful and the helicopter is ready for other operations.(Theprocess of pairing takes about 3 seconds.)

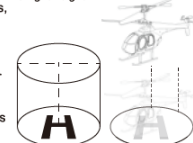


Before take off, Calibrated aircraft position ensure it is in the best condition.

Takeoff In Altitude Hold And Landing Instructions



P.S. The hovering aircraft is able to be gaining height after pushing up the left joystick. Or pull down to reduce height. And to adjust to be a right height.

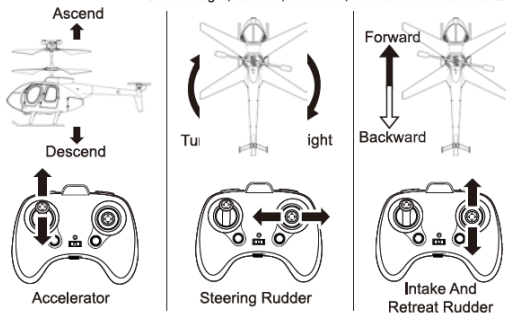


Illustrations of auto takeoff and landing (The helicopter hovers at altitude of 1.2 meter after take off)

4

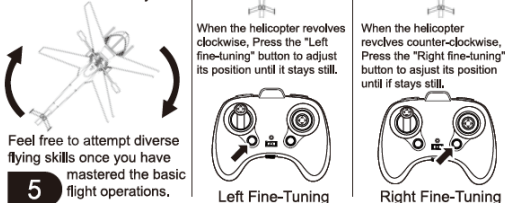
Helicopter Operations

Press the one-key start button to control the helicopter to ascend to the altitude of 1.2 meter and hover stably. In other operations to control the helicopter to turn left and right, Ascend, Descend, Forward and backward.



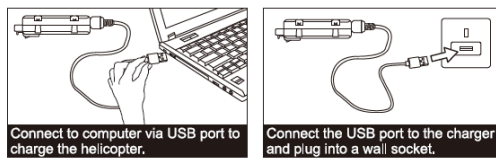
Trimming Helicopter

Press "One-key start" button to control the helicopter to ascend to the altitude of 1.2 meter and hover stably.



5

Battery Charging For Drone



Connect to computer via USB port to charge the helicopter.

Connect the USB port to the charger and plug into a wall socket.

Notes:

1. Turn the power switch to the "OFF" position before charging.
2. Connect the USB jack on the bottom of the fuselage to the charging cable, And use a charger or computer to connect the charging current go less than 2A.
3. The USB's indicator light turns solid when it start to charge and turns off when the charging completes. It has a charging time of 70 minutes and gives a flying time of 8 minutes.
4. The helicopter's bottom LED light turns up when the helicopter battery is low.
5. Please use original charger for battery charging, Chargers from others might cause damage to the battery.

▲ Battery Instructions

- There is a certain risk when using lithium battery. It may cause fire, Body injury or property loss users must be aware of the risks and take full responsibility of using battery improperly.
- If battery leakage occurs, Please avoid contacting your eyes or skin with electrolyte once it happens, Please wash your eyes with clean water and seek medical care immediately.
- Please remove the plug immediately if you sense any peculiar smell, Noise or smog.
- Install the battery in place when replacing the battery to make the aircraft more stable, Failure to do so will cause the aircraft to advance automatically.

▲ Charging Matters Needing Attention

- Please use the charger from original factory to ensure your safe usage.
- Do not charge dilant or outworn battery.
- Do not over charge battery please unplug the charger once fully charged.
- Do not charge the battery next to inflammables, Such as carpet, Timber floor or wood furniture or on the surface of electro-conductive objects.
- Please always keep an eye on the battery when charging.
- Do not charge battery which not cool down yet the charging temperature should be between 0°C to 40°C.

6

Don't Fly Helicopter At The Place With These Signs



Notes:

1. Store the helicopter and the controller in an environment where it is exposed to moisture, Dust, Direct sunlight or extremely high or low temperatures.
2. Use only the charger that is made for use with this model helicopter.
3. Make a complete inspection before flying the helicopter, Do not let the helicopter fly out of sight when flying.
4. Make sure that there is nobody using the same frequency as you at the same time in the room.

FAQ

Problems	Causes	Solutions
Remote controller does not work	Batteries installed improperly	Check and make sure that the batteries are installed by the right polarity
	The batteries are weak	Replace with new or freshly charged batteries
Helicopter does not operate smoothly	Failure to match code from remote controller	Turn off the helicopter and match code again
	Lose control in the wind	Do not fly the helicopter in significant winds
Helicopter does not fly high enough	Rotor speed is too low	Push up the left throttle
	Helicopter is not fully charged	Make sure the helicopter battery is fully charged

7

FCC Warning Statement

Changes or modifications not expressly approved by the party responsible for compliance could void the user's authority to operate the equipment. This equipment has been tested and found to comply with the limits for a Class B digital device, pursuant to Part 15 of the FCC Rules. These limits are designed to provide reasonable protection against harmful interference in a residential installation. This equipment generates uses and can radiate radio frequency energy and, if not installed and used in accordance with the instructions, may cause harmful interference to radio communications. However, there is no guarantee that interference will not occur in a particular installation. If this equipment does cause harmful interference to radio or television reception, which can be determined by turning the equipment off and on, the user is encouraged to try to correct the interference by one or more of the following measures:

- Reorient or relocate the receiving antenna.
- Increase the separation between the equipment and receiver.
- Connect the equipment into an outlet on a circuit different from that to which the receiver is connected.
- Consult the dealer or an experienced radio/TV technician for help.

FCC Radiation Exposure Statement

The device has been evaluated to meet general RF exposure requirement. The device can be used in portable exposure condition without restriction.

This device complies with Part 15 of the FCC Rules. Operation is subject to the following two conditions:
(1) This device may not cause harmful interference, and
(2) This device must accept any interference received, including interference that may cause undesired operation.