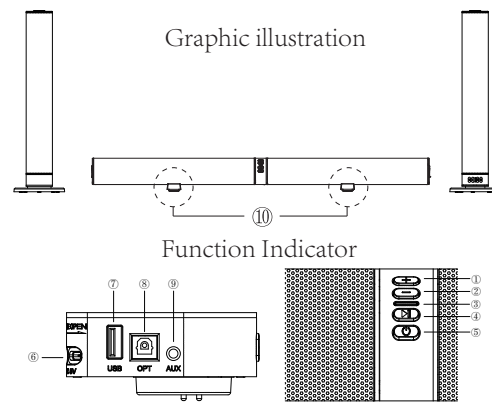
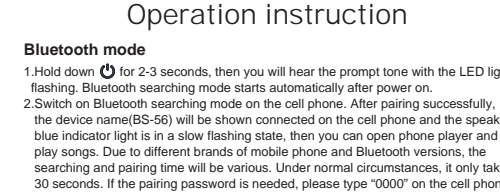
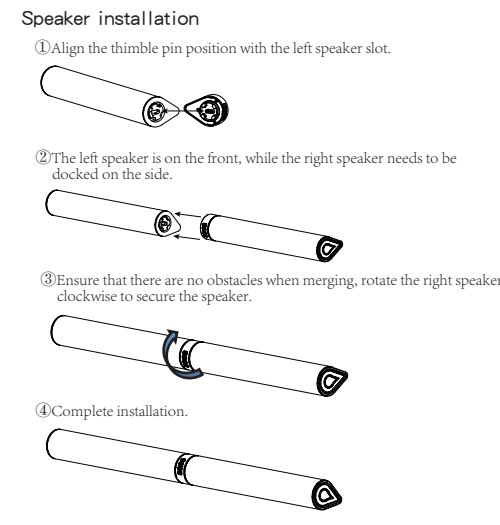
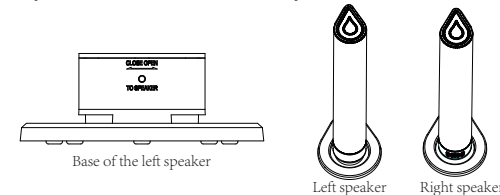
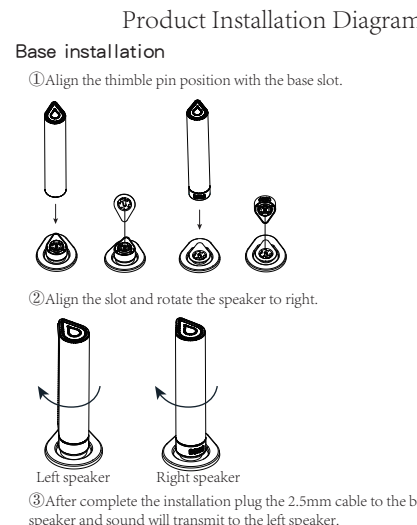


User Manual

BS-56



①	Volume up	Hold down to turn up the volume/ Briefly press to previous song
②	Volume down	Hold down to turn down the volume/ Briefly press to next song
③	Indicator light	Blue light on during operation (The indicator light turn red while charging and turn off after fully charged)
④	Play/Pause	Briefly press to play/pause the music
⑤	Power On/Off button	Hold down to power on/off; Mode selector
⑥	Charging port	DC 5V charging port
⑦	USB socket	USB drive audio input
⑧	Optical socket	Optical audio input
⑨	AUX socket	3.5mm audio input
⑩	Base support frame	Used to place the main body



TWS True Wireless Speaker Function

Two BS-56 speakers can implement TWS true wireless speaker function.

- Turn on speaker ①. Hold down for 2 seconds the prompt tone is heard to enable the Bluetooth interconnection function.
- Turn on speaker ② waiting for two speakers to connect to each other automatically. After establishing connection the two speakers will emit a successful connection prompt tone.
- Switch on Bluetooth search mode on your phone and establish connection with the speaker. Please note the information on the Bluetooth connection method.
- Either the buttons on speaker or remote control can control two speakers' previous/next song, volume up/down, pause/play simultaneously.

Attention:
 (1)TWS function only works in Bluetooth mode. Numbers of connection is two.
 (2)Two speakers will become one after TWS Bluetooth connection.
 (3)If two speakers are fail to establish TWS connection, please restart two speakers and try again, make sure two speakers are in Bluetooth mode

Battery Charge

- Use the USB charging cable provided to connect the speaker and then connect the USB 2.0 port to an adapter 5V/2A or higher to charge the battery. Or on a USB port with an output voltage of 5V.
- The indicator light turn red while charging and turn off after fully charged. The charging duration is subject to the output current.

Note: The charging input voltage of the speaker is 4.5V-5.5V. Do not exceed the safe voltage range, otherwise the speaker will be damaged. Do not charge for a long time.

Optical Mode

- Use an optical plug to connect your digital TV or DVD player and connect the cable to the optical socket on the speaker.
- Turn on the TV and enter sound settings. Then convert TV audio output to OPT output.
- When the speaker is powered on, then you will hear the prompt tone with the indicator light flashing, and then click to convert the mode to optical mode.

Attention: In optical mode, the speaker cannot switch between songs.

FM Radio Mode

- Connect type-C USB charging cable to the speaker as radio antenna.
- Power on speaker and briefly press to switch to FM radio mode.
- FM auto searching mode: long press ►|| button to start searching. After the FM radio station search is completed it will automatically exit the search mode. If the search stops midway please press button to stop searching.

Attention: The frequency band shall be subjected to the local radio station; Frequency band: FM87.5-108Hz.

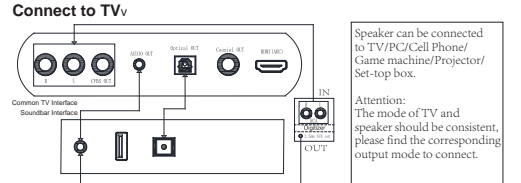
AUX Mode

- Use a 3.5mm AUX cable to connect your cell phone / MP3 / PC and connect the cable to the AUX socket on the speaker.
- Speaker will automatically switch into AUX Mode after turn on. If it is in a different mode, press mode selector to switch to AUX mode.

Attention: In AUX mode, the speaker cannot switch between songs.

USB Mode

- Plug the USB drive into the USB socket.
- Speaker will automatically switch into USB Mode after turn on. If it is in a different mode, press mode selector to switch to USB mode.



- Turn on the TV. (Not limited to TV, such as game consoles, projectors, PC, etc)
- Use the data cable which provided to connect the speaker and television. Ensure that the audio port of the TV is on the audio out output port.
- Ensure that the audio output selected in TV as same as the speaker audio output.
- Set the digital audio output format of the TV to "PCM" or "AUTOMATIC".

Common problems and solving method

- If the speaker cannot be turned on, please charge the battery. Or fully charge for initial use.
- When a low battery reminder appears, please connect the charger immediately to charge, and reduce the playback volume to 50%. It can be used while charging.
- Cannot establish a connection even after multiple attempts?
 - Check whether the speaker is in Bluetooth search mode.
 - If there are too many Bluetooth receivers in the vicinity, this can hamper the search process. Please turn off other Bluetooth receivers.
 - Open the Bluetooth settings on your phone, disconnect then try again to establish a connection.
- The volume of speaker is too low or there are distortion? Please check the volume settings of your phone and adjust the volume.
- Is the signal being dropped when playing music? Please check whether the distance exceeds the effective range or whether there are any physical barriers between your phone and the speaker.
- If the speaker cannot be controlled during use, please reset it using the appropriate tool.

Attention:

 - If connected to tablet, please refer to the connection method for phones.
 - Laptop connection: since there are many Bluetooth versions for laptops, the connection method can vary. If you cannot establish a connection on the first attempt or if you cannot get the music to play, please download the very latest Bluetooth driver.
 - If the speaker receives no inputs for 5 minutes, it will switch off automatically to save power.

Warning:
 Changes or modifications to this unit not expressly approved by the party responsible for compliance could void the user's authority to operate the equipment.

NOTE:
 This device complies with part 15 of the FCC Rules. Operation is subject to the following two conditions: (1) This device may not cause harmful interference, and (2) this device must accept any interference received, including interference that may cause undesired operation.

FCC Statement:
 This equipment has been tested and found to comply with the limits for a Class B digital device, pursuant to part 15 of the FCC Rules. These limits are designed to provide reasonable protection against harmful interference in a residential installation. This equipment generates, uses and can radiate radio frequency energy and, if not installed and used in accordance with the instructions, may cause harmful interference to radio communications. However, there is no guarantee that interference will not occur in a particular installation. If this equipment does cause harmful interference to radio or television reception, which can be determined by turning the equipment off and on, the user is encouraged to try to correct the interference by one or more of the following measures:
 —Reorient or relocate the receiving antenna.
 —Increase the separation between the equipment and receiver.
 —Connect the equipment into an outlet on a circuit different from that to which the receiver is connected.
 —Consult the dealer or an experienced radio/TV technician for help.

RF exposure compliance statement:
 This device has been evaluated to meet the general RF exposure requirement