

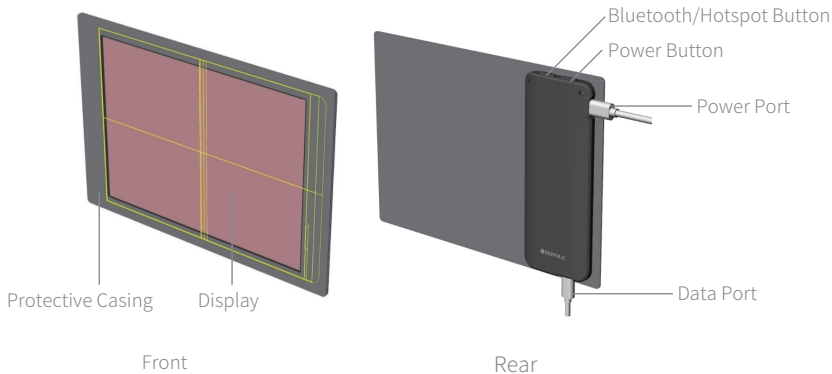
# FLX Display Module

## User Manual

# Introduction

Thanks for using FLX display module! This User Manual will guide you to start using your FLX display module and introduce core functions.

## About the module



## Caring For Your FLX Display Module

To clean use a slightly micro fiber nonabrasive wiper.

Ingress Protection Marking: IP53, please avoid submersing in water, keep away from open flames and excessive heat.

## Installing the App

To install, scan the QR Codes below or search and download from the App store or Google Play store.



## Power On/Off

Once your FLX display module was properly connected to a portable power bank or power adapter, the device will be turned on automatically. To turn off, simply disconnect the device with the power supplier.

## Hotspot Connection

1. Open the “XXX” App and scan QR code on the screen of your FLX display module.
2. Or turn on Hotspot and Bluetooth in your smartphone settings, then search and connect it to your FLX display module by Bluetooth, once the Bluetooth connection has completed, the Hotspot will be paired automatically.

## Wi-Fi Connection

Search and find the Wi-Fi network you are going to connect on the FLX display module, enter the password of the network to complete the connection.

## Transfer contents to FLX display module

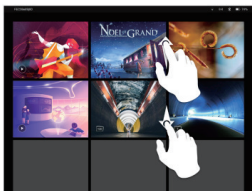
There are following ways allow you to transfer content (images, videos, texts) to your display module:

1. Select images/videos from the Local Album of your smartphone, you can use our App to edit and share them wirelessly to the display module.
2. Connect your display module and your PC or laptop with micro-USB cable, select images/videos from your PC or laptop, then transfer the selected contents to your display module through the micro-USB cable.

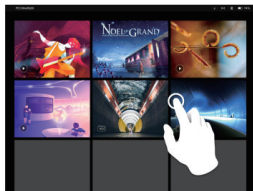
## Touch Control

### View/Select Contents

In the main screen, you can view all the contents, and select one to play in full screen.

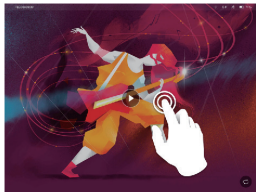


Swipe up/down ---- view other contents



Single-tap ---- select and play

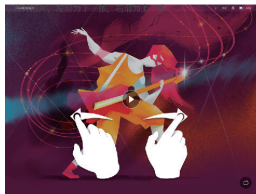
## Player Control



Tap to play/stop



Swipe up/down ---- volume up/down



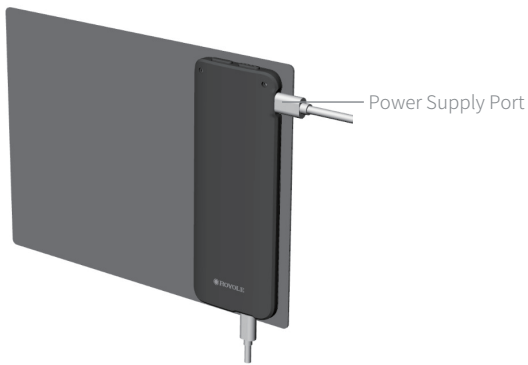
Swipe left/right ---- rewind/forward



Pinch gesture ---- return to last screen

## Charging

Please connect the device to standard adapter or power bank through USB type-C cable, power supply should be 5V-2A.



Note: Do not use any power adapter or USB cables other than specified types. Otherwise it may cause the device to malfunction, or even cause damage.

## Specification

Dimensions	198mm*142mm*9mm
Weight	Less than 100g
Main-case Material	Polycarbonate
Screen Size	7.8 inches
Screen Type	AMOLED
Resolution	1920*1440
PPI	308ppi
Color Depth	16.7M (3*8bit)
Touch Sensor	Multi-fingerprint
Memory	2GB RAM +32GB ROM
Video Playing Format	MP4, MKV, MOV, AVI, 3GP, FLV, M2TS, M2V, M4V, MPEG, MPG, TS, VOB, WEBM, ASF
Image Playing Format	JPG, PNG, BMP, GIF

## Radio frequency information

Type	Frequency Bands	Max. Tx Power(Tune up)
2.4G WLAN	2400MHz~2483.5MH	12.5dBm
2.4G BT	2400MHz~2483.5MHZ	8dBm

## Important Safety Instructions

- 1) Read these instructions-All safety and operating instructions should be read before.
- 2) Keep these instructions-The safety and operating instructions should be retained for future reference.
- 3) Heed all warnings-All warnings on the apparatus and in the operating instructions should be adhered to.
- 4) Follow all instructions-All operating and use instructions should be followed.
- 5) Clean only with dry cloth.
- 6) Only use attachments/accessories specified by the manufacturer.
- 7) Unplug the apparatus during lightning storms or when unused for long periods of time.
- 8) CAUTION: These servicing instructions are for use by qualified service personnel only. To reduce the risk of electric shock, do not perform any servicing other than that specified in the operating instructions unless you are qualified to do so.
- 9) Refer all servicing to qualified service personnel. Servicing is required when the apparatus has been damaged in anyway, such as power-supply cord or plug is damaged, liquid has been spilled or objects have fallen into the apparatus, the apparatus has been exposed to rain or moisture, does not operate normally, device has been dropped.



## Warning

- Do not expose the apparatus to rain or moisture.
- Do not expose the apparatus to open flames, such as lighted candles.
- Do not expose the apparatus near any heat sources such as radiators, heat registers, stoves, or other apparatus (including) that produce heat.
- Do not expose the apparatus to dripping or splashing, and do not place objects filled with liquids, such as vases, on the apparatus.
- Do not expose the apparatus to excessive heat.
- Do not move the apparatus by dragging the cable.



Bluetooth® word mark and logos are registered trademarks owned by the Bluetooth SIG, Inc. and any use of such marks by Royole is under license. Other trademarks and trade names are those of their respective owners.

## EU Declarations of Conformity



Hereby, Royole Corporation declares that this device is in conformity with the Radio Equipment Directive 2014/53/EU and RoHS Directive 2011/65/EU.

For the declaration of conformity, visit <http://www.royole.com>.

## FCC Compliance statement

This device complies with Part 15 of the FCC Rules. Operation is subject to the following two conditions:

- (1) this device may not cause harmful interference, and
- (2) this device must accept any interference received, including interference that may cause undesired operation.

### **Warning**

Changes or modifications to this unit not expressly approved by the party responsible for compliance could void the user's authority to operate the equipment.

### **Note**

This equipment has been tested and found to comply with the limits for a Class B digital device, pursuant to Part 15 of the FCC Rules. These limits are designed to provide reasonable protection against harmful interference in a residential installation. This equipment generates, uses and can radiate radio frequency energy and, if not installed and used in accordance with the instructions, may cause harmful interference to radio communications. However, there is no guarantee that interference will not occur in a particular installation. If this equipment does cause harmful interference to radio or television reception, which can be determined by turning the equipment off and on, the user is encouraged to try to correct the interference by one or more of the following measures:

- Reorient or relocate the receiving antenna.
- Increase the separation between the equipment and receiver.

- ❑ Connect the equipment into an outlet on a circuit different from that to which the receiver is connected.
- ❑ Consult the dealer or an experienced radio/TV technician for help.

## Canadian regulatory statement CAN ICES-3 (B)/NMB-3(B)

This device complies with Industry Canada licence-exempt RSS standard(s). Operation is subject to the following two conditions:

- (1) This device may not cause interference, and
- (2) This device must accept any interference, including interference that may cause undesired operation of the device.

Le présent appareil est conforme aux CNR d'Industrie Canada applicables aux appareils radio exempts de licence. L'exploitation est autorisée aux deux conditions suivantes : (1) l'appareil ne doit pas produire de brouillage, et (2) l'utilisateur de l'appareil doit accepter tout brouillage radioélectrique subi, même si le brouillage est susceptible d'en compromettre le fonctionnement.

## SAR of Body-Support Operation

This device was tested for typical body-Support operations.

To comply with RF exposure requirements, a minimum separation distance of 0.0 cm can be maintained between the user's body and the handset, including the antenna.



Correct Disposal of this product. This marking indicates that this product should not be disposed with other household wastes throughout the EU. To prevent possible harm to the environment or human health from uncontrolled waste disposal, recycle it responsibly to promote the sustainable reuse of material resources. To return your used device, please use the return and collection systems or contact the retailer where the product was purchased. They can take this product for environmental safe recycling.

48025 Fremont Boulevard, Fremont, CA 94538

Ceresstraat 1, 1st floor, 4811 CA Breda, Breda Netherlands

Service Hotline: (866) 397-0080

Official Website: [www.royole.com](http://www.royole.com)

Support: [www.royole.com/support](http://www.royole.com/support)

© 2018 Royole Corporation

