



**SGS-CSTC Standards Technical Services Co., Ltd.  
Guangzhou Branch**

198 Kezhu Road, Scientech Park, Guangzhou Economic & Technological  
Development District, Guangzhou, China 510663  
Telephone: +86 (0) 20 82155555  
Fax: +86 (0) 20 82075059  
Email: ee.guangzhou@sgs.com

Report No.: GZEM160700462101  
Page: 1 of 16  
FCC ID: 2AGUM-49MHZ602

## TEST REPORT

The following sample(s) was/were submitted and identified on behalf of the client as:

<b>Application No.:</b>	GZEM1607004621CR
<b>Applicant:</b>	MEKBAO PLASTIC ELECTRONIC INDUSTRIAL CO., LTD
<b>Manufacturer:</b>	The same as applicant
<b>Factory:</b>	The same as applicant
<b>FCC ID:</b>	2AGUM-49MHZ602
<b>Product Description:</b>	Toy series
<b>Model No.:</b>	5588-602, 5588-606, 88881, 88606, 5588-622, 5588-616, 5588-617, 5588-618, 5588-623, 88612, 88613, 5588-605, 88882, 88605, 5588-620, 5588-607, 88607, 5588-619, 5588-621, 88614, 88615, 5588-604, 88604, 88616, 5588-612, 5588-613, 5588-614, 5588-615, 88617, 5588-603, 88603, 5588-608, 5588-609, 88608, 88609, 5588-610, 5588-611, 88610, 88611, 5588-601, 88601, 88602, 5588-624, 5588-625, 5588-626, 5588-627, 5588-628, 5588-629, 5588-630, 5588-631, 5588-632, 5588-633, 5588-634, 5588-635, 5588-636, 5588-637, 5588-638, 5588-639, 5588-640, 5588-641, 5588-642, 5588-643, 5588-644, 5588-645, 5588-646, 5588-647, 5588-648, 5588-649, 5588-650 ♣
<b>♣</b>	Please refer to section 3 of this report for further details.
<b>Standards:</b>	CFR 47 PART 15 Subpart C: 2014 section 15.235
<b>Date of Receipt:</b>	2016-07-08
<b>Date of Test:</b>	2016-07-21 to 2016-07-22
<b>Date of Issue:</b>	2016-08-16
<b>Test Result :</b>	<b>Pass*</b>

\* In the configuration tested, the EUT detailed in this report complied with the standards specified above.



The manufacturer should ensure that all products in series production are in conformity with the product sample detailed in this report. If the product in this report is used in any configuration other than that detailed in the report, the manufacturer must ensure the new system complies with all relevant standards.

The report must not be used by the client to claim product certification, approval, or endorsement by NVLAP, NIST, or any agency of the federal government. All test results in this report can be traceable to National or International Standards.

This document is issued by the Company subject to its General Conditions of Service printed overleaf, available on request or accessible at <http://www.sgs.com/en/Terms-and-Conditions.aspx> and, for electronic format documents, subject to Terms and Conditions for Electronic Documents at <http://www.sgs.com/en/Terms-and-Conditions/Terms-e-Document.aspx>. Attention is drawn to the limitation of liability, indemnification and jurisdiction issues defined therein. Any holder of this document is advised that information contained hereon reflects the Company's findings at the time of its intervention only and within the limits of Client's instructions, if any. The Company's sole responsibility is to its Client and this document does not exonerate parties to a transaction from exercising all their rights and obligations under the transaction documents. This document cannot be reproduced except in full, without prior written approval of the Company. Any unauthorized alteration, forgery or falsification of the content or appearance of this document is unlawful and offenders may be prosecuted to the fullest extent of the law. Unless otherwise stated the results shown in this test report refer only to the sample(s) tested and such sample(s) are retained for 30 days only.



Version Revision Record				
Version	Chapter	Date	Modifier	Remark
00		2016-08-16		Original Report

<b>Authorized for issue by:</b>			
<b>Tested By</b>			2016-07-21 to 2016-07-22
	(Lily Kuang) / Project Engineer		<b>Date</b>
<b>Prepared By</b>			2016-08-13
	(Julia Zhu) / Clerk		<b>Date</b>
<b>Checked By</b>			2016-08-16
	(Ricky Liu) / Project Engineer		<b>Date</b>



## 2 Test Summary

Test	Test Requirement	Test method	Result
Radiated Emission	FCC PART 15 C section 15.235	ANSI C 63.10: Clasue 6.4, 6.5 and 6.6	PASS
Occupied Bandwidth	FCC PART 15 C section 15.235	ANSI C 63.10: Clasue 6.9	PASS
<b>Remark:</b> EUT: In this whole report EUT means Equipment Under Test. N/A: not applicable. Refer to the relative section for the details. Tx: In this whole report Tx (or tx) means Transmitter. Rx: In this whole report Rx (or rx) means Receiver. RF: In this whole report RF means Radio Frequency. ANSI C63.10: the detail version is ANSI C63.10:2013 in the whole report.			
<b>* Model No.:</b> 5588-602, 5588-606, 88881, 88606, 5588-622, 5588-616, 5588-617, 5588-618, 5588-623, 88612, 88613, 5588-605, 88882, 88605, 5588-620, 5588-607, 88607, 5588-619, 5588-621, 88614, 88615, 5588-604, 88604, 88616, 5588-612, 5588-613, 5588-614, 5588-615, 88617, 5588-603, 88603, 5588-608, 5588-609, 88608, 88609, 5588-610, 5588-611, 88610, 88611, 5588-601, 88601, 88602, 5588-624, 5588-625, 5588-626, 5588-627, 5588-628, 5588-629, 5588-630, 5588-631, 5588-632, 5588-633, 5588-634, 5588-635, 5588-636, 5588-637, 5588-638, 5588-639, 5588-640, 5588-641, 5588-642, 5588-643, 5588-644, 5588-645, 5588-646, 5588-647, 5588-648, 5588-649, 5588-650  According to the declaration from the applicant, the electrical circuit design, layout, components used and internal wiring were identical for all models, with only difference being the model names and appearance. Therefore only one model <b>5588-602</b> was tested in this report.			



### 3 Contents

1	Cover Page .....	1
2	Test Summary .....	3
3	Contents .....	4
4	General Information.....	5
4.1	Client Information .....	5
4.2	General Description of E.U.T. ....	5
4.3	Details of E.U.T.....	5
4.4	Description of Support Units .....	5
4.5	Deviation from Standards .....	5
4.6	Abnormalities from Standard Conditions.....	5
4.7	Other Information Requested by the Customer.....	5
4.8	Test Location.....	5
4.9	Test Facility .....	6
5	Equipment List.....	7
6	Test Results .....	8
6.1	E.U.T. test conditions .....	8
6.2	Antenna Requirement.....	9
6.3	Radiated Emissions .....	10
6.4	Occupied Bandwidth .....	15



## 4 General Information

### 4.1 Client Information

Applicant: MEKBAO PLASTIC ELECTRONIC INDUSTRIAL CO., LTD  
Address of Applicant: Jiaoxi Industry Areas Lianxia Chenghai Shantou City, GD CHINA  
Manufacturer: The same as applicant  
Address of Manufacturer: The same as applicant  
Factory: The same as applicant  
Address of Factory: The same as applicant

### 4.2 General Description of E.U.T.

Product Description: Toy series  
Model No.: 5588-602

### 4.3 Details of E.U.T.

Modulation and Antenna Type: The Tx is a narrow-band AM modulation by internal signal, no voice application and with an integral antenna.  
Power Supply: DC 7.5V = 1.5V X 5 Size 'AA' battery for Rx  
DC 3V = 1.5V X 2 Size 'AA' battery for Tx  
Power cord: N/A

### 4.4 Description of Support Units

The EUT has been tested as an independent unit.

### 4.5 Deviation from Standards

None.

### 4.6 Abnormalities from Standard Conditions

None.

### 4.7 Other Information Requested by the Customer

None.

### 4.8 Test Location

All tests were performed at:  
SGS-CSTC Standards Technical Services Co., Ltd., Guangzhou Branch EMC Laboratory,  
198 Kezhu Road, Scientech Park, Guangzhou Economic & Technology Development District,  
Guangzhou, China 510663  
Tel: +86 20 82155555 Fax: +86 20 82075059  
No tests were sub-contracted.



## 4.9 Test Facility

The test facility is recognized, certified, or accredited by the following organizations:

- **NVLAP (Lab Code: 200611-0)**

SGS-CSTC Standards Technical Services Co., Ltd., Guangzhou EMC Laboratory is accredited by the National Voluntary Laboratory Accreditation Program (NVLAP/NIST). NVLAP Code: 200611-0.

The report must not be used by the client to claim product certification, approval, or endorsement by NVLAP, NIST, or any agency of the Federal Government.

- **ACMA**

SGS-CSTC Standards Technical Services Co., Ltd., EMC Laboratory can also perform testing for the Australian C-Tick mark as a result of our NVLAP accreditation.

- **SGS UK(Certificate No.: 32), SGS-TUV SAARLAND and SGS-FIMKO**

Have approved SGS-CSTC Standards Technical Services Co., Ltd., EMC Laboratory as a supplier of EMC TESTING SERVICES and SAFETY TESTING SERVICES.

- **CNAS (Lab Code: L0167)**

SGS-CSTC Standards Technical Services Co., Ltd., EMC Laboratory has been assessed and is in compliance with CNAS-CL01:2006 accreditation criteria for testing laboratories (identical to ISO/IEC 17025:2005 General Requirements) for the Competence of Testing Laboratories.

- **FCC (Registration No.: 282399)**

SGS-CSTC Standards Technical Services Co., Ltd., EMC Laboratory has been registered and fully described in a report filed with the (FCC) Federal Communications Commission. The acceptance letter from the FCC is maintained in our files. Registration 282399, May 31, 2002.

- **Industry Canada (Registration No.: 4620B-1)**

The 3m/10m Alternate Semi-anechoic chamber of SGS-CSTC Standards Technical Services Co., Ltd. has been registered by Certification and Engineering of Industry Canada for radio equipment testing with Registration No. 4620B-1.

- **VCCI (Registration No.: R-2460, C-2584, G-449 and T-1179)**

The 10m Semi-anechoic chamber and Shielded Room of SGS-CSTC Standards Technical Services Co., Ltd. have been registered in accordance with the Regulations for Voluntary Control Measures with Registration No.: R-2460, C-2584, G-449 and T-1179 respectively.

- **CBTL (Lab Code: TL129)**

SGS-CSTC Standards Technical Services Co., Ltd., E&E Laboratory has been assessed and fully complies with the requirements of ISO/IEC 17025:2005, the Basic Rules, IECEE 01 and Rules of procedure IECEE 02, and the relevant IECEE CB-Scheme Operational documents.



## 5 Equipment List

RE in Chamber						
No.	Test Equipment	Manufacturer	Model No.	Serial No.	Cal. date	Cal.Due date
					(YYYY-MM-DD)	(YYYY-MM-DD)
EMC0525	Compact Semi-Anechoic Chamber	ChangZhou ZhongYu	N/A	N/A	2014-12-05	2016-12-04
EMC0522	EMI Test Receiver	Rohde & Schwarz	ESIB26	100283	2016-02-01	2017-01-31
EMC0056	EMI Test Receiver	Rohde & Schwarz	ESCI	100236	2016-02-01	2017-01-31
EMC0528	RI High frequency Cable	SGS	20 m	N/A	2016-04-19	2018-04-18
EMC2025	Trilog Broadband Antenna 30-1000MHz	SCHWARZBECK MESS-ELEKTRONIK	VULB 9160	9160-3372	2014-07-14	2017-07-13
EMC0524	Bi-log Type Antenna	Schaffner -Chase	CBL6112B	2966	2013-08-31	2016-08-30
EMC0519	Bilog Type Antenna	Schaffner -Chase	CBL6143	5070	2014-05-04	2017-05-03
EMC2026	Horn Antenna 1-18GHz	SCHWARZBECK MESS-ELEKTRONIK	BBHA 9120D	9120D-841	2013-08-31	2016-08-30
EMC0521	1-26.5 GHz Pre-Amplifier	Agilent	8449B	3008A01649	2016-01-25	2017-01-24
EMC2065	Amplifier	HP	8447F	N/A	2016-07-04	2017-07-03
EMC2086	PRE AMPLIFIER MH648A	ANRITSU CORP	MH648A	N/A	2015-12-19	2016-12-18
EMC2063	Pre-amplifier 1GHz-26GHz	Compliance Direction Systems Lnc.	PAP-1G26-48	6279.628	2016-01-06	2017-01-05
EMC0523	Active Loop Antenna	EMCO	6502	42963	2016-02-27	2018-02-26
EMC2041	Broad-Band Horn Antenna (14)15-26.5(40)GHz	SCHWARZBECK MESS-ELEKTRONIK	BBHA 9170	9170-375	2014-05-26	2017-05-25
EMC2079	High Pass Filter(915MHz)	FSY MICROWAVE	HM1465-9SS	009	2016-01-25	2017-01-24
EMC2069	2.4GHz Filter	Micro-Tronics	BRM 50702	149	2016-01-25	2017-01-24
EMC0530	10m Semi-Anechoic Chamber	ETS	N/A	N/A	2016-04-30	2018-04-29

General used equipment						
No.	Test Equipment	Manufacturer	Model No.	Serial No.	Cal. date	Cal.Due date
					(YYYY-MM-DD)	(YYYY-MM-DD)
EMC0006	DMM	Fluke	73	70681569	2015-09-17	2016-09-16
EMC0007	DMM	Fluke	73	70671122	2015-09-17	2016-09-16



## 6 Test Results

### 6.1 E.U.T. test conditions

Test Voltage: DC 3.0 V (new battery)

Requirements: **15.31(e)**: For intentional radiators, measurements of the variation of the input power or the radiated signal level of the fundamental frequency component of the emission, as appropriate, shall be performed with the supply voltage varied between 85% and 115% of the nominal rated supply voltage. For battery operated equipment, the equipment tests shall be performed using a new battery.

Operating Environment:

Temperature: 22-25.0 °C

Humidity: 48-55% RH

Atmospheric Pressure: 1001-1010 mbar

Test frequencies and frequency range:

According to the 15.31(m) Measurements on intentional radiators or receivers, other than TV broadcast receivers, shall be performed and, if required, reported for each band in which the device can be operated with the device operating at the number of frequencies in each band specified in the following table:

According to the 15.33 (a) For an intentional radiator, the spectrum shall be investigated from the lowest radio frequency signal generated in the device, without going below 9 kHz, up to at least the frequency shown in the following table:

#### Number of fundamental frequencies to be tested in EUT transmit band

Frequency range in which device operates	Number of frequencies	Location in frequency range of operation
1 MHz or less	1	Middle
1 MHz to 10 MHz	2	1 near top and 1 near bottom
More than 10 MHz	3	1 near top, 1 near middle and 1 near bottom

#### Frequency range of radiated emission measurements

Lowest frequency generated in the device	Upper frequency range of measurement
9 kHz to below 10 GHz	10th harmonic of highest fundamental frequency or to 40 GHz, whichever is lower
At or above 10 GHz to below 30 GHz	5th harmonic of highest fundamental frequency or to 100 GHz, whichever is lower
At or above 30 GHz	5th harmonic of highest fundamental frequency or to 200 GHz, whichever is lower, unless otherwise specified

Remark: Test frequency is 49.862 MHz.



## 6.2 Antenna Requirement

### Standard requirement

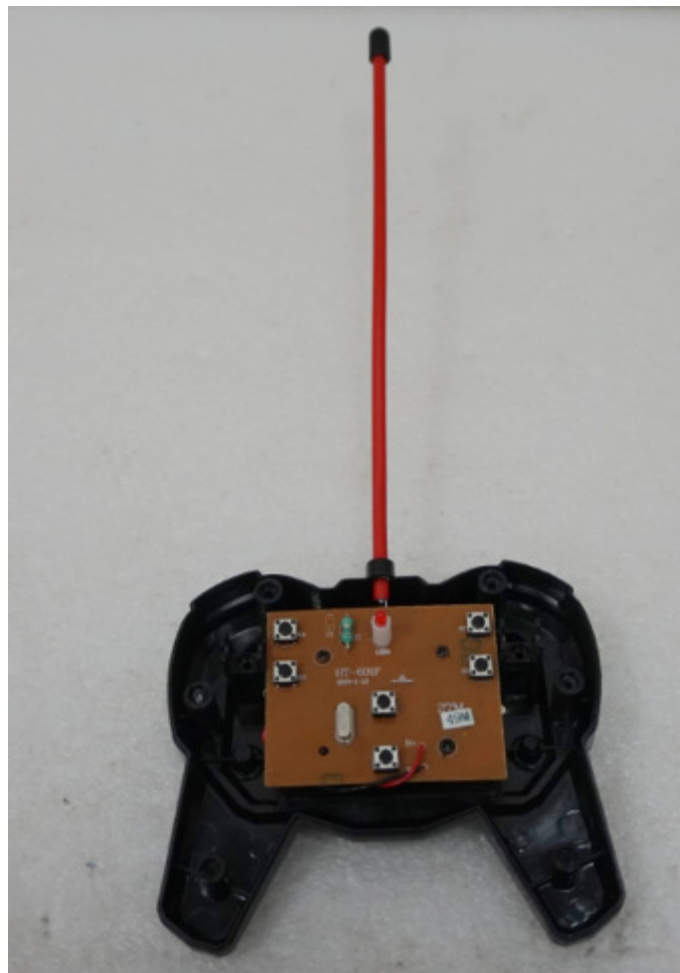
15.203 requirement:

For intentional device. According to 15.203, an intentional radiator shall be designed to

Ensure that no antenna other than that furnished by the responsible party shall be used with the device.

### EUT Antenna

The antenna is an Integral Antenna integrated on the main PCB and no consideration of replacement. The best case gain of the antenna is 0 dBi.



**Test result: The unit does meet the FCC requirements.**



### 6.3 Radiated Emissions

- Test Requirement:** FCC Part 15 C section 15.235  
**Test Method:** ANSI C63.10: Clause 6.4, 6.5.  
**Measurement Distance:** 3 m (Semi-Anechoic Chamber)  
**Test Status:** Test in transmitting mode.  
**Requirements:**

the field strength of emissions from intentional radiators operated under this Section shall not exceed the following:

**15.235(a)** :The field strength of any emission within this band shall not exceed 10,000 microvolts/meter at 3 meters. The emission limit in this paragraph is based on measurement instrumentation employing an average detector. The provisions in Section 15.35 for limiting peak emissions apply.

**15.235(b)** : The field strength of any emissions appearing between the band edges and up to 10 kHz above and below the band edges shall be attenuated at least 26 dB below the level of the unmodulated carrier or to the general limits in Section 15.209, whichever permits the higher emission levels. The field strength of any emissions removed by more than 10 kHz from the band edges shall not exceed the general radiated emission limits in Section 15.209. All signals exceeding 20 microvolts/meter at 3 meters shall be reported in the application for certification

Out of band emissions shall not exceed:

Frequency range(MHz)	Quasi-peak limits dB ( $\mu\text{V/m}$ )
30 to 88	40
88 to 216	43.5
216 to 960	46
Above 960	54
At transitional frequencies the lower limit applies.	

**Test Procedure:**

1) 9 kHz to 30 MHz emissions:

For testing performed with the loop antenna. The center of the loop was positioned 1 m above the ground and positioned with its plane vertical at the specified distance from the EUT. During testing the loop was rotated about its vertical axis for maximum response at each azimuth and also investigated with the loop positioned in the horizontal plane.

2) 30 MHz to 1 GHz emissions:

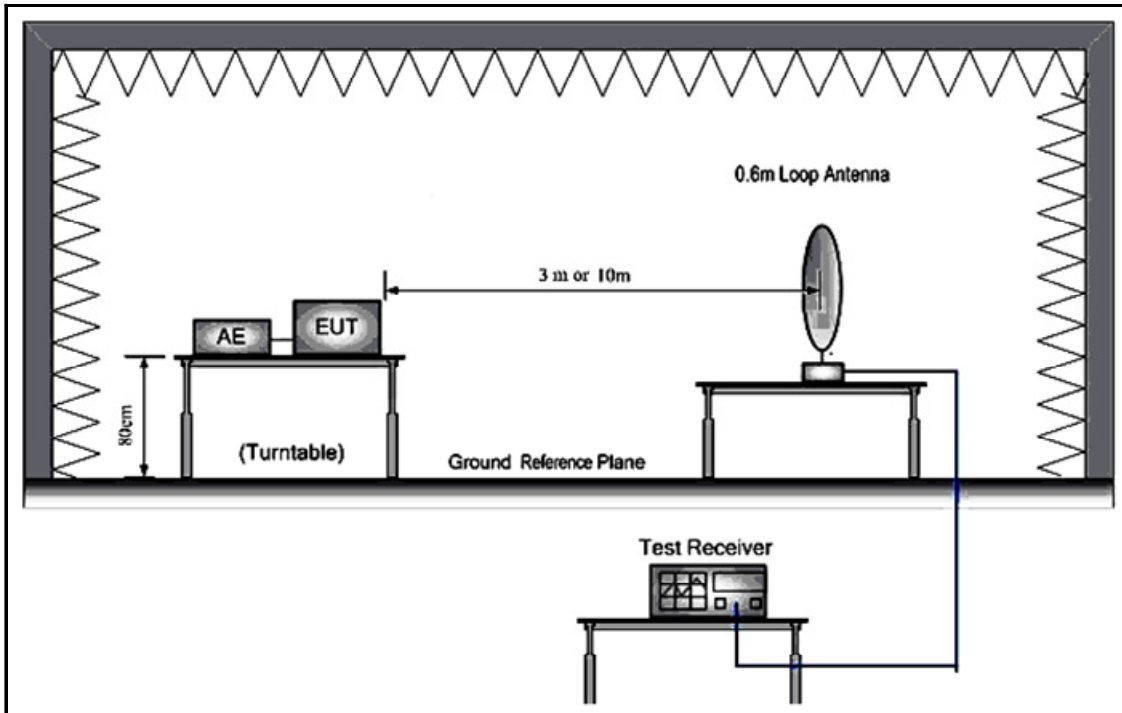
For testing performed with the bi-log type antenna. The measurement is performed with the EUT rotated 360°, the antenna height scanned between 1m and 4m, and the antenna rotated to repeat the measurement for both the horizontal and vertical antenna polarizations.

**Detector:**

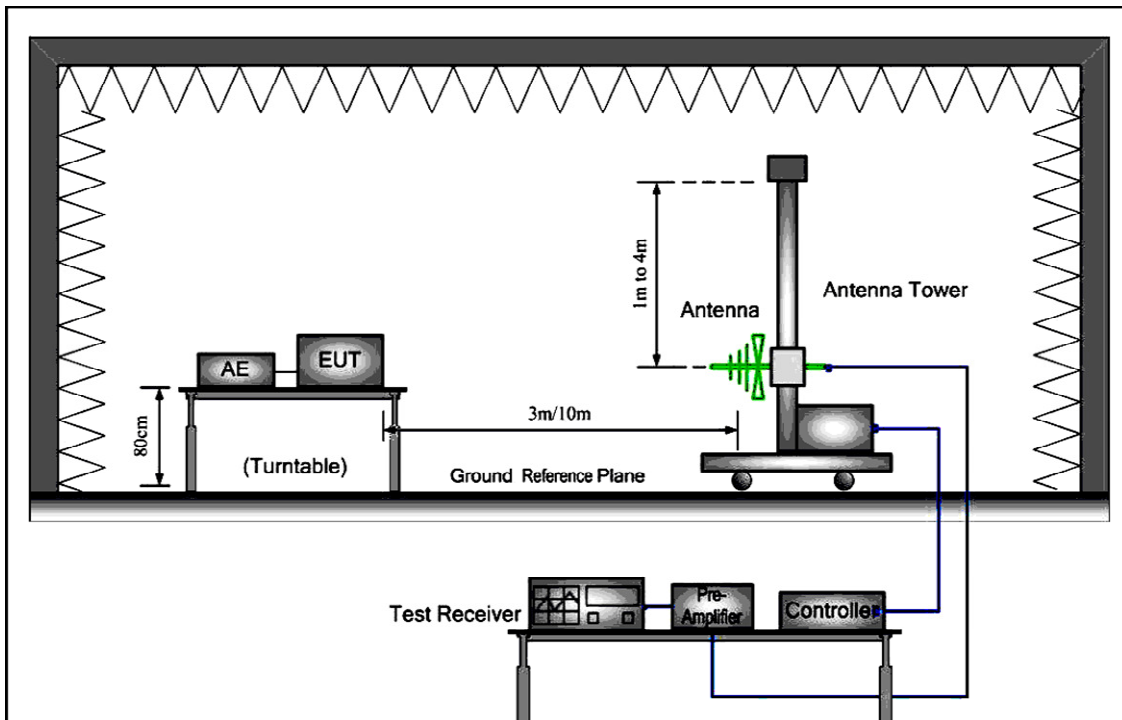
Test Receiver test setup	Detector	
	Peak	Average
RBW	120 kHz for $f < 1$ GHz	120 kHz for $f < 1$ GHz
VBW	$\geq$ RBW	$\geq$ RBW
Sweep	auto	auto
Detector function	peak	AV
Trace	max hold	max hold

**Test Configuration:**

- 1) 9 kHz to 30 MHz emissions:



- 2) 30 MHz to 1 GHz emissions:





**1) Fundamental emission:**

**Antenna polarization: Vertical:**

Frequency (MHz)	Read Level (dBuV)	Antenna Factor (dB/m)	Cable Loss (dB)	Preamp Factor (dB)	Level (dBuV/m)	Limit Line (dBuV/m)	Over Limit (dB)	Remark
49.860	68.10	14.49	1.30	27.00	56.89	100.0	-43.11	Peak
49.860	--	--	--	--	--	80.0	--	Average

**Antenna polarization: Horizontal :**

Frequency (MHz)	Read Level (dBuV)	Antenna Factor (dB/m)	Cable Loss (dB)	Preamp Factor (dB)	Level (dBuV/m)	Limit Line (dBuV/m)	Over Limit (dB)	Remark
49.860	85.56	14.49	1.30	27.00	74.35	100.0	-25.65	Peak
49.860	--	--	--	--	--	80.0	--	Average

Y: rotate EUT by 90° vertically.

X: rotate EUT by 90° clockwise.

Z: EUT as Radiated Emission test setup photograph in section 6 of this report.

Remark: Radiated Emission test setup photograph in section 6 of this report is the worst case and reported.

**2) other emissions:**

The receiver was scanned from the lowest frequency generated within the EUT to 1 GHz. When an emission was found, the table was rotated to produce the maximum signal strength. An initial pre-scan was performed for in peak detection mode using the receiver. The EUT was measured for both the Horizontal and Vertical polarities and performed a pre-test three orthogonal planes. The worst case emissions were reported.

An initial pre-scan was performed in the 3 m chamber using the spectrum analyzer in peak detection mode. Quasi-peak measurements were conducted based on the peak sweep graph.

The EUT was measured by Bilog antenna with 2 orthogonal polarities.

The field strength is calculated by adding the Antenna Factor, Cable Factor & Peramplifier. The basic equation with a sample calculation is as follows:

Final Test Level = Receiver Reading + Antenna Factor + Cable Factor – Peramplifier Factor.

The following test results were performed on the EUT.



9 kHz~30 MHz Field Strength of Unwanted Emissions.Quasi-Peak Measurement

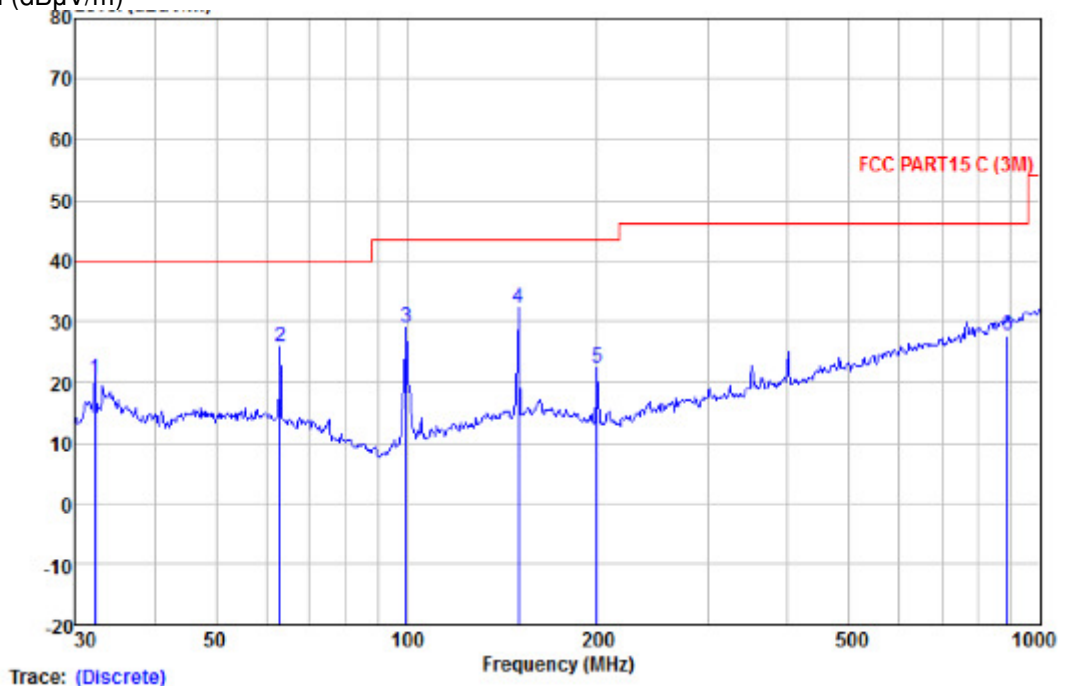
The measurements with active loop antenna were greater than 20dB below the limit, so the test data were not recorded in the test report.

30 MHz~1 GHz Field Strength of Unwanted Emissions.Quasi-Peak Measurement

Vertical:

Peak scan

Level (dBuV/m)



Quasi-peak measurement

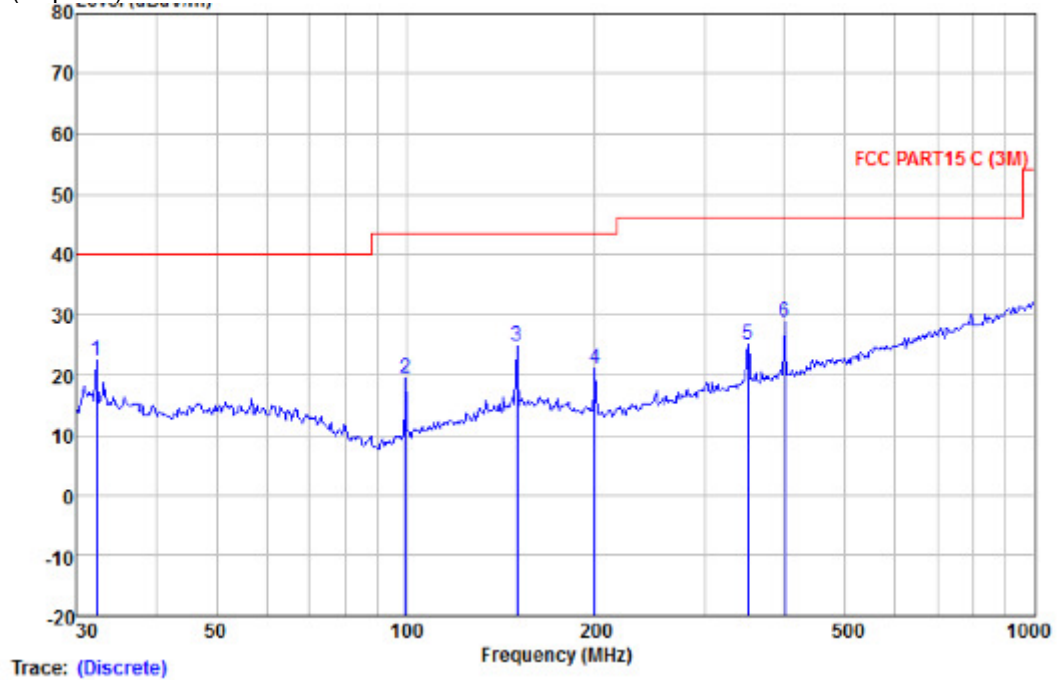
Freq	ReadAntenna	Cable	Preamp	Limit	Over	Remark
MHz	Level	Factor	Loss	Line	Limit	
	dBuV	dB/m	dB	dB	dBuV/m	dB
32.179	32.40	14.04	1.10	27.10	20.44	40.00 -19.56 QP
63.092	37.57	13.75	1.45	27.00	25.77	40.00 -14.23 QP
99.878	44.92	9.20	1.80	26.90	29.02	43.50 -14.48 QP
150.011	43.28	13.38	2.30	26.80	32.16	43.50 -11.34 QP
199.986	35.10	11.20	2.70	26.60	22.40	43.50 -21.10 QP
887.610	26.40	23.32	5.90	27.77	27.85	46.00 -18.15 QP



Horizontal:

Peak scan

Level (dBuV/m)



Quasi-peak measurement

Freq	Read Level	Antenna Factor	Cable Loss	Preamp Factor	Limit Level	Over Limit	Remark
MHz	dBuV	dB/m	dB	dB	dBuV/m	dB	
32.179	34.45	14.04	1.10	27.10	22.49	40.00	-17.51 QP
99.878	35.27	9.20	1.80	26.90	19.37	43.50	-24.13 QP
150.011	36.04	13.38	2.30	26.80	24.92	43.50	-18.58 QP
199.986	33.80	11.20	2.70	26.60	21.10	43.50	-22.40 QP
350.477	32.88	15.29	3.68	26.75	25.10	46.00	-20.90 QP
400.432	35.86	16.30	3.90	27.20	28.86	46.00	-17.14 QP

Remark:

According to 15.35 (b) When average radiated emission measurements are specified in the regulations, including emission measurements below 1000 MHz, there is also a limit on the radio frequency emissions, as measured using instrumentation with a peak detector function, corresponding to 20 dB above the maximum permitted average limit for the frequency being investigated unless a different peak emission limit is otherwise specified in the rules, e.g., see Section 15.255.



## 6.4 Occupied Bandwidth

**Test Requirement:** FCC Part 15 C section 15.235

**Test Method:** ANSI C63.10: Clause 6.9

**Test Status:** Test in transmitting mode.

### Requirements:

15.235(b):The field strength of any emissions appearing between the band edges and up to 10 kHz above and below the band edges shall be attenuated at least 26 dB below the level of the unmodulated carrier.

Operation within the band: 49.82 – 49.90 MHz.

### Test Procedure:

The useful radiated emission from the EUT was detected by the spectrum analyser with peak detector. The vertical Scale is set to 10dB per division. The horizontal scale is set to 10 kHz per division. Read the down 26dB bandwidth of the carrier.

Set the spectrum analyzer: start at 49.81MHz and stop at 49.91MHz.

Set the spectrum analyzer: RBW = 3 kHz, VBW =10 kHz

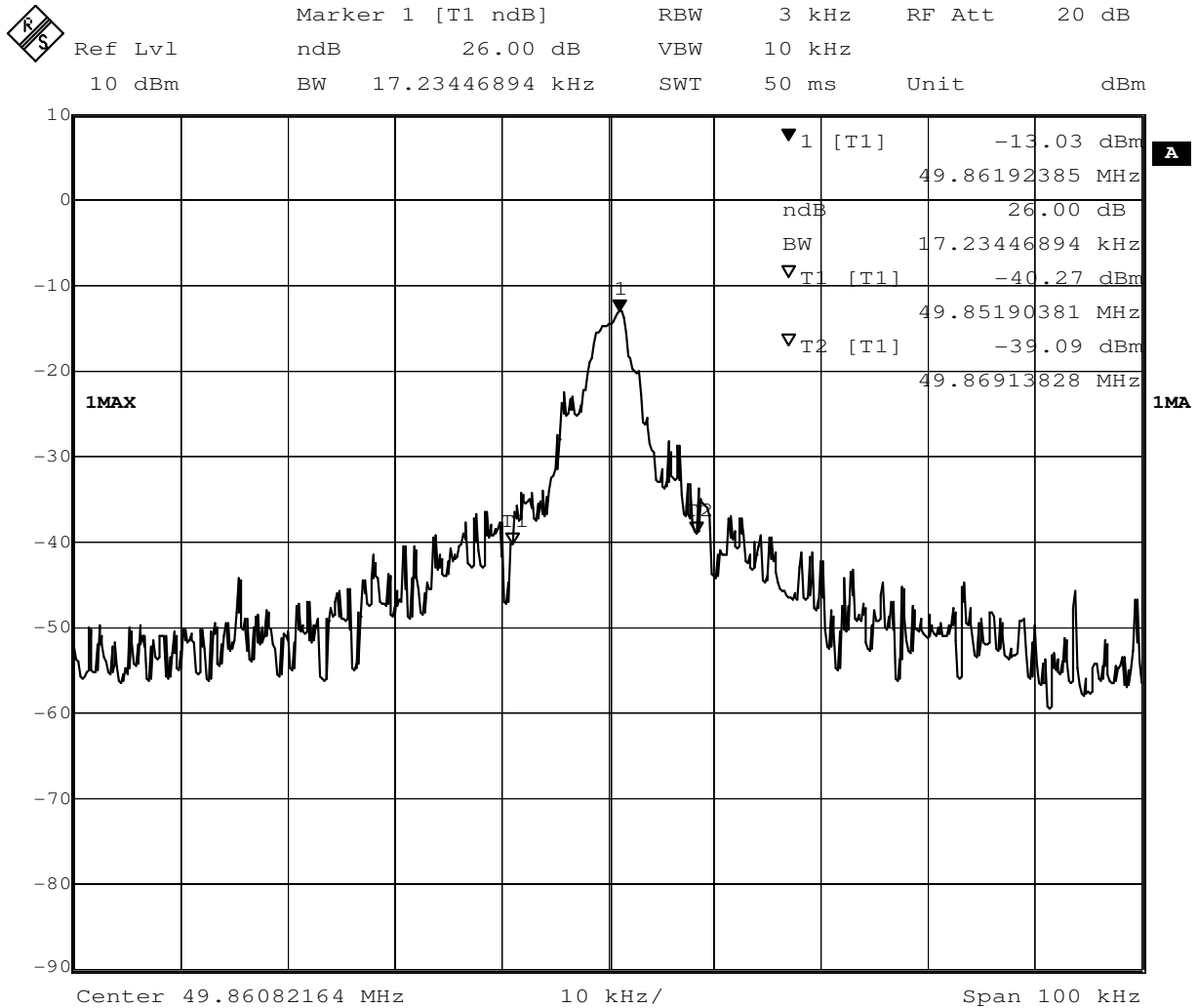
Sweep = auto; Detector Function = Peak. Trace = Max Hold.

Mark the peak frequency and -26 dB points bandwidth.





The graph as below:



26dB bandwidth lower frequency: 49.85190381 MHz  
 26dB bandwidth upper frequency: 49.86913828 MHz

--The End of Report--