

**Model:** KKM S1(f6)

**Brand:** iTrack

**Manufacturer:** KKM COMPANY LIMITED

**Address:** Jinlong Industry Area, Sanzhong, Qing Xi  
Town, Dong Guan City, Guang Dong Province, China

**Tel:** 0769-81276366

**Tel:** 0769-81276365

**Service Email:** [techsupport@ieasygourp.com](mailto:techsupport@ieasygourp.com)

### 1. Get the app

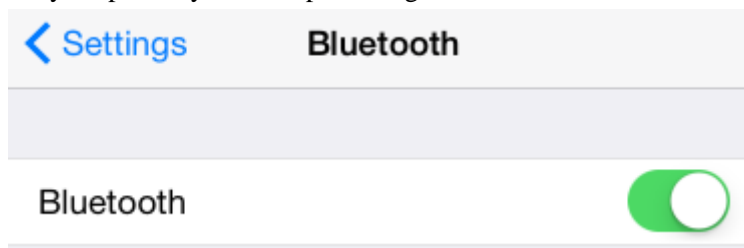
Please download our APP “iTrack Easy” from app store or play store. Or please scan QR code to download the app.



### 2. Turn on Bluetooth

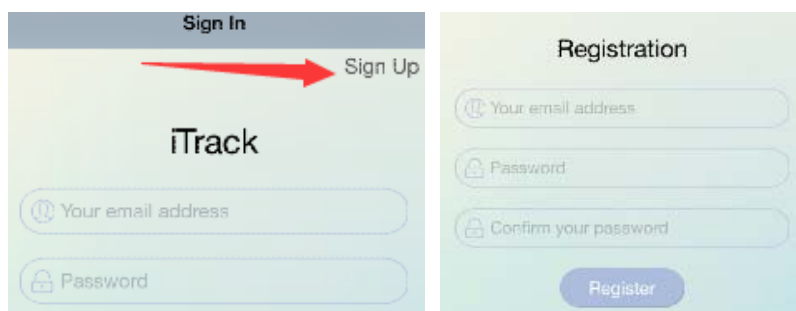
Make sure your Bluetooth on your phone is on.

On your phone, you can tap “Settings->Bluetooth”



### 3. Sign Up for New User

Start “iTrack Easy” APP and tap the Sign up button



### 4. Pair the iTrack device to your phone

- 1). Make sure to turn on your phone's Bluetooth.
- 2). Hold the iTrack device close to your phone.
- 3). Hold the button on the iTrack device until you hear a beep and the LED starts flashing.



### 5. Find my phone via iTrack

When iTrack is connected to your phone, hold the iTrack button and your phone will sound alert.



### 6. Find iTrack via phone

When iTrack is connected to your phone, open the iTrack App and tap the “Ring” icon on the App, the device will beep and red LED will flash.



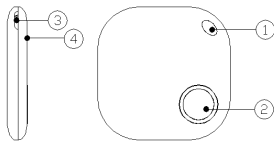
### 7. Camera Remote

The button on the iTrack device also doubles as a camera remote. Never be left out of a group picture again.



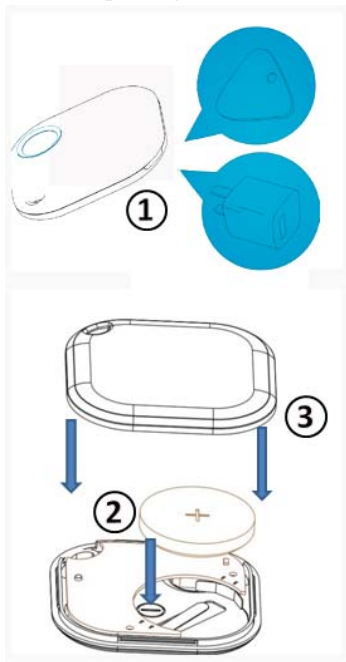
## 8. Know our iTrack

1. Strap hole
2. Button: for pairing with phone, wake up the iTrack device and camera remote
3. Notch
4. LED



## 9. Change Battery

1. Open iTrack from the notch on the side. You can use a flat head screwdriver to pry it open.
2. Replace the old battery and put a new CR2032 battery.
3. After putting the cover back, press the button to connect to you phone again.



This device complies with part 15 of the FCC Rules. Operation is subject to the following two conditions: (1) This device may not cause harmful interference, and (2) this device must accept any interference received, including interference that may cause undesired operation.

Any Changes or modifications not expressly approved by the party responsible for compliance could void the user's authority to operate the equipment.

**Note:** This equipment has been tested and found to comply with the limits for a Class B digital device, pursuant to part 15 of the FCC Rules. These limits are designed to provide reasonable protection against harmful interference in a residential installation. This equipment generates uses and can radiate radio frequency energy and, if not installed and used in accordance with the instructions, may cause harmful interference to radio communications. However, there is no guarantee that interference will not occur in a particular installation. If this equipment does cause harmful interference to radio or television reception, which can be determined by turning the equipment off and on, the user is encouraged to try to correct the interference by one or more of the following measures:

- Reorient or relocate the receiving antenna.
- Increase the separation between the equipment and receiver.
- Connect the equipment into an outlet on a circuit different from that to which the receiver is connected.
- Consult the dealer or an experienced radio/TV technician for help.

The device has been evaluated to meet general RF exposure requirement. The device can be used in portable exposure condition without restriction.