

ECF GEN 2 - REV. 0F

WITH BUILT-IN SOUND AMPLIFIER

RELEASE NOTES v 1.0

5TH JUNE, 2014

PREPARED BY:

WAVETEC

The Technology Company

REVISION CHART

Version	Primary Author(s)	Description of Version	Date Completed
1.0	Rameez Qasim	ECF _Gen 2 with Amplifier and reset PCB	5 th June, 2014

Contents

1. Release Content 4

1.1 Release Contents 4

2. Improvements 5

2.1 Sections Improved: 5

2.2 Changes: 5

2.3 Network Connectivity Diagram 6

3. Testing Scope 7

3.1 Test Environment: 7

3.2 Test cases & Result: 7

4. Contact Us 8

1. RELEASE CONTENT

1.1 Release Contents

The release consists of the following:

1. EQ controller Gen 2 with built-in Amplifier



2. IMPROVEMENTS

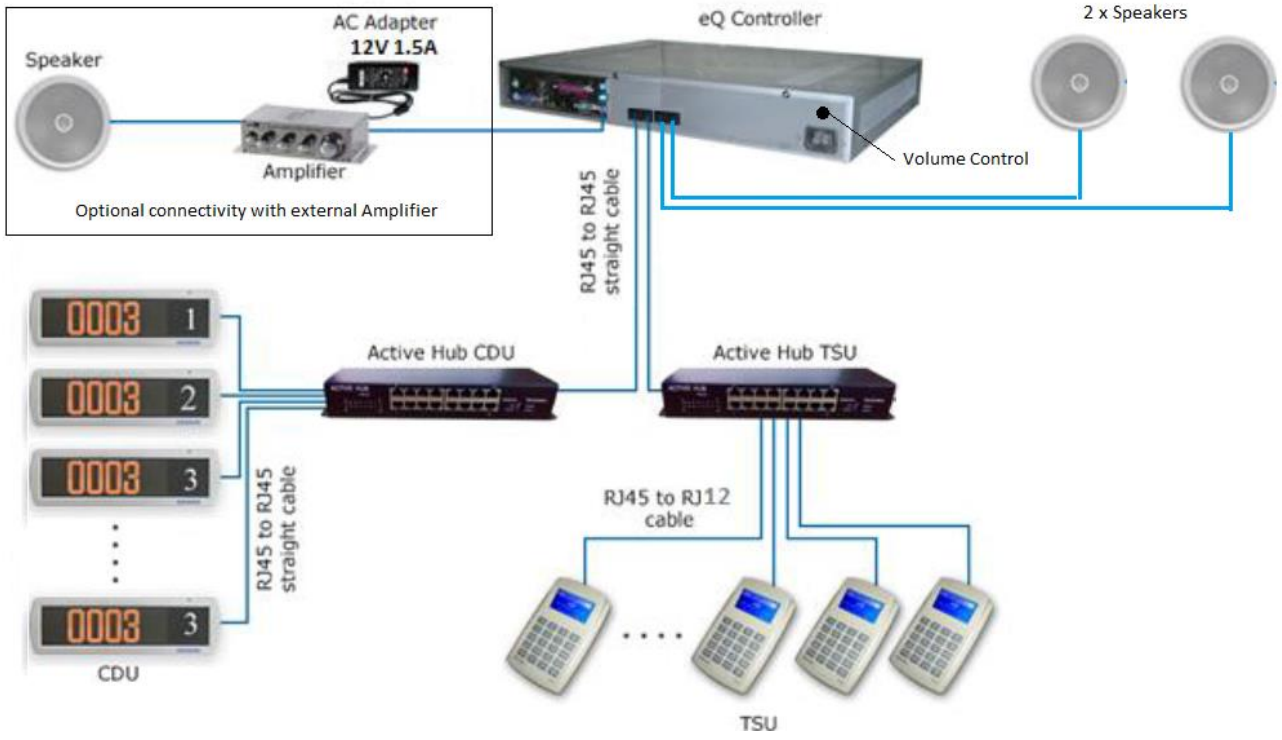
2.1 Sections Improved:

- The feedback from Sales and CSE prompted the need of incorporating a built-in Audio Amplifier in addition to existing option of external amplifier. The built-in amplifier would serve small waiting areas with less hassle for installation.

2.2 Changes:

- A volume knob at the rear panel is available for adjusting the sound level
- 2 speakers of 8 ohm each can be connected to 2 RJ45 connectors available on the rear panel marked as “Sound”
- Non-Amplified Audio is still available to be used with external Amplifier and Speakers if needed.

2.3 Network Connectivity Diagram



3. TESTING SCOPE

3.1 Test Environment:

EQ set-up for 4 counters, with following configuration:

- 2 Bar SDU, in Dual-Line mode – Powered by 5V Adaptor
- 1 Cube SDU – Powered by 5V Adaptor
- 3 CDU – Powered by Active Hub
- 1 PDU – Powered by Active Hub
- 1 TDU-Lite – Powered by 12V Adaptor
- 2 Hard-TSU – Powered by Active Hub
- 1 Soft-TSU – Powered by Active Hub

Configuration Description:

- PDU acts as CDU
- Bar SDU, Cube SDU and CDU connected with 1 separate Active Hub, with 12V input power supply.
- Hard TSU and TDU-Lite connected with 1 separate Active Hub, with 12V input power supply.
- PDU connected with 1 separate Active Hub, with 5V input power supply.

3.2 Test cases & Result:

S.No.	Test case	No. of Cycles	Test Result/Output
1	Display on PDU, without any corrupted image?	100	100/100 - Passed
2	All CDUs, PDU & SDUs updated every time & correctly?	100	100/100 – Passed
3	Calling sound always synced with calling?	100	100/100 – Passed
4	Ticket issuance from TDU Lite	100	100/100 – Passed

4. CONTACT US

In case you may require further assistance, please contact us at support.int@wavetec.com

Head Office
United Arab Emirates, Dubai
Wavetec FZCO
Address: Industrial License No. 175
Light Industrial Unit # 9
Dubai Silicon Oasis
P.O. Box 341133
Phone: +971 (4) 326 31 93
Fax: +971 (4) 326 31 92
Email: support.int@wavetec.com
Web: <http://www.wavetec.com>

Warning:

This device complies with Part 15 of the FCC Rules. Operation is subject to the following two conditions: (1) this device may not cause harmful interference, and (2) this device must accept any interference received, including interference that may cause undesired operation. changes or modifications not expressly approved by the party responsible for compliance could void the user's authority to operate the equipment.

NOTE: This equipment has been tested and found to comply with the limits for a Class B digital device, pursuant to Part 15 of the FCC Rules. These limits are designed to provide reasonable protection against harmful interference in a residential installation. This equipment generates, uses and can radiate radio frequency energy and, if not installed and used in accordance with the instructions, may cause harmful interference to radio communications. However, there is no guarantee that interference will not occur in a particular installation. If this equipment does cause harmful interference to radio or television reception, which can be determined by turning the equipment off and on, the user is encouraged to try to correct the interference by one or more of the following measures:

- Reorient or relocate the receiving antenna.
- Increase the separation between the equipment and receiver.
- Connect the equipment into an outlet on a circuit different from that to which the receiver is connected.
- Consult the dealer or an experienced radio/TV technician for help.

NOTE: This device and its antenna(s) must not be co-located or operation in conjunction with any other antenna or transmitter.