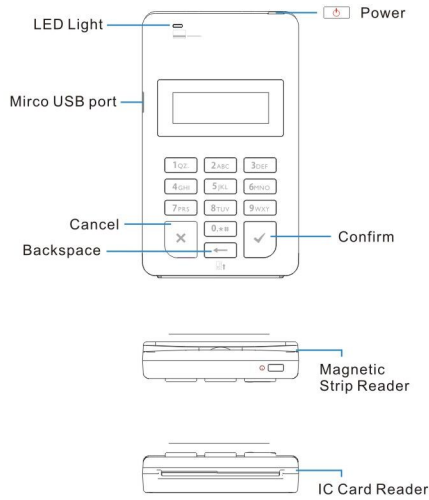
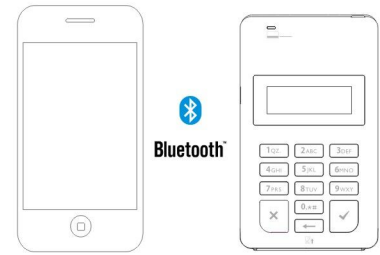


QPOS Ultra Manual

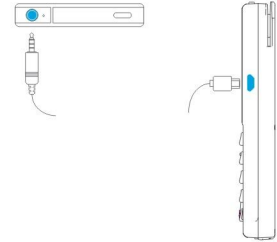
Product Details 1



Data Connectivity 2

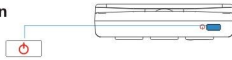


Scan device and get connected via Bluetooth



Power up/Charging 3

Power Button



Press power button for 2 second

Power indicator will light up blue

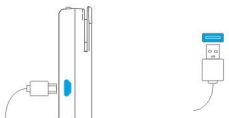
Screen will indicate

(startup process takes approximately 5 seconds)

Charging

Card reader Micro USB slot

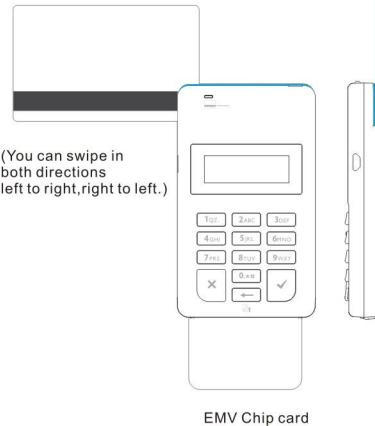
Computer USB slot



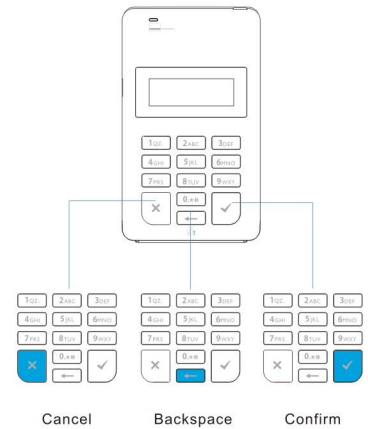
Transaction & Payment 4

when swiping
have the magnetic
stripe facing forwards

card swipe slot



PIN Entry 5



This device complies with Part 15 of the FCC Rules. Operation is subject to the following two conditions: (1) this device may not cause harmful interference, and (2) this device must accept any interference received, including interference that may cause undesired operation.

Changes or modifications not expressly approved by the party responsible for compliance could void the user's authority to operate the equipment.

NOTE: This equipment has been tested and found to comply with the limits for a Class B digital device, pursuant to Part 15 of the FCC Rules. These limits are designed to provide reasonable protection against harmful interference in a residential installation. This equipment generates, uses instructions, may cause harmful interference to radio communications. However, there is no guarantee that interference will not occur in a particular installation. If this equipment does cause harmful interference to radio or television reception, which can be determined by turning the equipment off and on, the user is encouraged to try to correct the interference by one or more of the following measures:

- Reorient or relocate the receiving antenna.
- Increase the separation between the equipment and receiver.
- Connect the equipment into an outlet on a circuit different from that to which the receiver is connected.
- Consult the dealer or an experienced radio/TV technician for help.