

BT DH5 78CH 5mm

Measurement Report for Device, EDGE RIGHT, ISM 2.4 GHz Band, UID 10032 CAA, Channel 78 (2480.0MHz)

### Device under Test Properties

Model, Manufacturer Device,	Dimensions [mm] 180.0 x 80.0 x 40.0	IMEI	DUT Type Phone
--------------------------------	--	------	-------------------

### Exposure Conditions

Phantom Section, TSL	Position, Test Distance [mm]	Band	Group, UID	Frequency [MHz], Channel Number	Conversion Factor	TSL Conductivity [S/m]	TSL Permittivity
Flat, HSL	EDGE RIGHT, 5.00	ISM 2.4 GHz Band	Bluetooth, 10032-CAA	2480.0, 78	7.85	1.91	39.5

### Hardware Setup

Phantom	TSL, Measured Date	Probe, Calibration Date	DAE, Calibration Date
ELI V8.0 (20deg probe tilt) - 2178	HSL600-10000 Charge: xxxx, 2023-Sep-18	EX3DV4 - SN7383, 2023-06-05	DAE3 Sn427, 2023-05-17

### Scan Setup

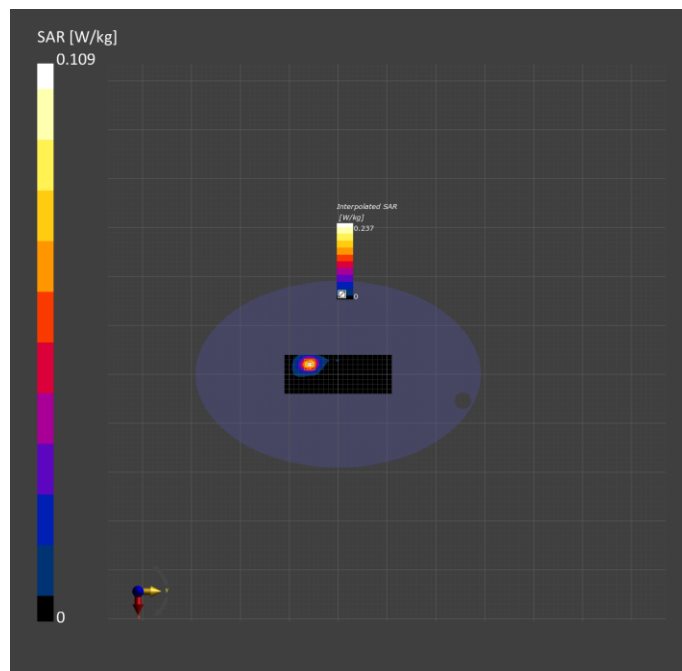
	Area Scan	Zoom Scan
Grid Extents [mm]	80.0 x 220.0	30.0 x 30.0 x 30.0
Grid Steps [mm]	10.0 x 10.0	5.0 x 5.0 x 1.5
Sensor Surface [mm]	3.0	1.4
Graded Grid	Yes	Yes
Grading Ratio	1.5	1.5
MAIA	Y	Y
Surface Detection	All points	All points
Scan Method	Measured	Measured

### Measurement Results

	Area Scan	Zoom Scan
Date	2023-09-18, 21:20	2023-09-18, 21:33
psSAR1g [W/kg]	0.115	0.116
psSAR10g [W/kg]	0.053	0.054
Power Drift [dB]	-0.02	-0.01
Power Scaling	Disabled	Disabled
Scaling Factor [dB]		
TSL Correction	No correction	No correction
M2/M1 [%]		78.7
Dist 3dB Peak [mm]		10.2

### Warning(s) / Error(s)

Details	Area Scan	Zoom Scan
Warning(s)		
Error(s)		



2.4G WIFI 1CH 5mm

Measurement Report for Device, EDGE LEFT, WLAN 2.4GHz, UID 10316 AAB, Channel 1 (2412.0MHz)

### Device under Test Properties

Model, Manufacturer Device,	Dimensions [mm] 180.0 x 80.0 x 40.0	IMEI	DUT Type Phone
--------------------------------	--	------	-------------------

### Exposure Conditions

Phantom Section, TSL	Position, Test Distance [mm]	Band	Group, UID	Frequency [MHz], Channel Number	Conversion Factor	TSL Conductivity [S/m]	TSL Permittivity
Flat, HSL	EDGE LEFT, 5.00	WLAN 2.4GHz	WLAN, 10316-AAB	2412.0, 1	7.85	1.79	39.0

### Hardware Setup

Phantom	TSL, Measured Date	Probe, Calibration Date	DAE, Calibration Date
ELI V8.0 (20deg probe tilt) - 2178	HSL600-10000 Charge: xxxx, 2023-Oct-18	EX3DV4 - SN7383, 2023-06-05	DAE3 Sn427, 2023-05-17

### Scan Setup

	Area Scan	Zoom Scan
Grid Extents [mm]	80.0 x 220.0	30.0 x 30.0 x 30.0
Grid Steps [mm]	10.0 x 10.0	5.0 x 5.0 x 1.5
Sensor Surface [mm]	3.0	1.4
Graded Grid	Yes	Yes
Grading Ratio	1.5	1.5
MAIA	N/A	N/A
Surface Detection	All points	All points
Scan Method	Measured	Measured

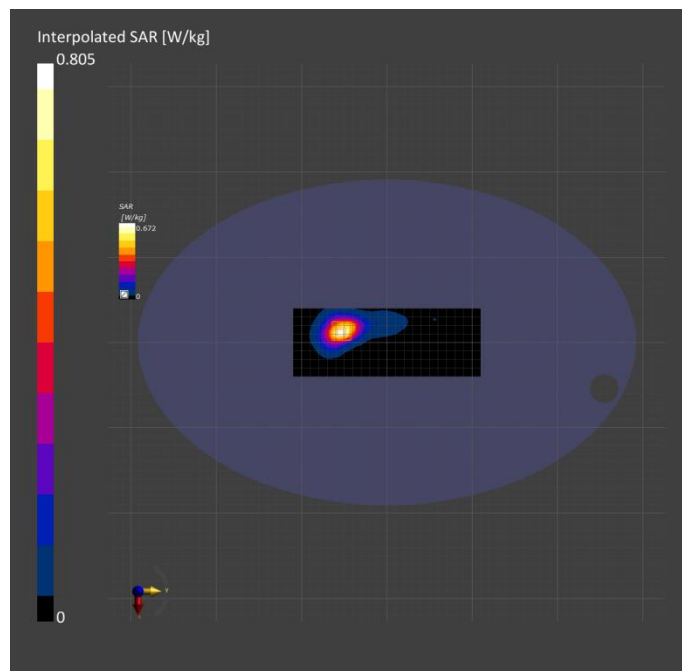
### Measurement Results

	Area Scan	Zoom Scan
Date	2023-10-18, 10:49	2023-10-18, 11:03
psSAR1g [W/kg]	0.629	0.694
psSAR10g [W/kg]	0.307	0.323
Power Drift [dB]	0.06	0.09
Power Scaling	Disabled	Disabled
Scaling Factor [dB]		
TSL Correction	No correction	No correction
M2/M1 [%]		80.7
Dist 3dB Peak [mm]		8.9

### Warning(s) / Error(s)

Details	Area Scan	Zoom Scan
---------	-----------	-----------

Warning(s)  
Error(s)



5G WIFI 36CH 5mm

Measurement Report for Device, EDGE LEFT, WLAN 5GHz, UID 10317 AAD, Channel 36 (5180.0MHz)

### Device under Test Properties

Model, Manufacturer Device,	Dimensions [mm] 180.0 x 80.0 x 40.0	IMEI	DUT Type Phone
--------------------------------	--	------	-------------------

### Exposure Conditions

Phantom Section, TSL	Position, Test Distance [mm]	Band	Group, UID	Frequency [MHz], Channel Number	Conversion Factor	TSL Conductivity [S/m]	TSL Permittivity
Flat, HSL	EDGE LEFT, 5.00	WLAN 5GHz	WLAN, 10317-AAD	5180.0, 36	5.57	4.54	36.0

### Hardware Setup

Phantom	TSL, Measured Date	Probe, Calibration Date	DAE, Calibration Date
ELI V8.0 (20deg probe tilt) - 2178	HSL600-10000 Charge: xxxx, 2023-Sep-15	EX3DV4 - SN7383, 2023-06-05	DAE3 Sn427, 2023-05-17

### Scan Setup

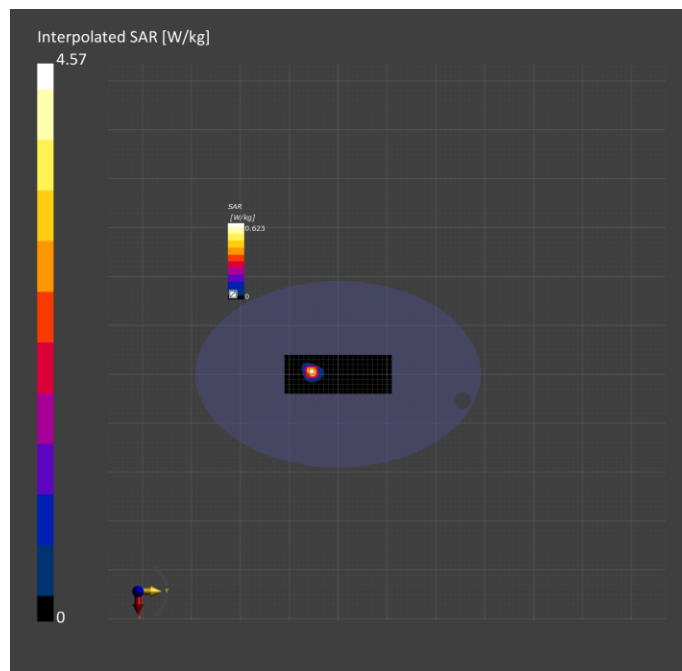
	Area Scan	Zoom Scan
Grid Extents [mm]	80.0 x 220.0	22.0 x 22.0 x 22.0
Grid Steps [mm]	10.0 x 10.0	4.0 x 4.0 x 1.4
Sensor Surface [mm]	3.0	1.4
Graded Grid	Yes	Yes
Grading Ratio	1.5	1.4
MAIA	Y	N/A
Surface Detection	All points	All points
Scan Method	Measured	Measured

### Measurement Results

	Area Scan	Zoom Scan
Date	2023-09-15, 13:58	2023-09-15, 14:13
psSAR1g [W/kg]	0.987	1.19
psSAR10g [W/kg]	0.339	0.369
Power Drift [dB]	-0.15	-0.03
Power Scaling	Disabled	Disabled
Scaling Factor [dB]		
TSL Correction	No correction	No correction
M2/M1 [%]		63.1
Dist 3dB Peak [mm]		6.8

### Warning(s) / Error(s)

Details	Area Scan	Zoom Scan
Warning(s)		
Error(s)		



Measurement Report for Device, EDGE RIGHT, WLAN 5GHz, UID 10317 AAD, Channel 149 (5745.0MHz)

**Device under Test Properties**

Model, Manufacturer Device,	Dimensions [mm] 180.0 x 80.0 x 40.0	IMEI	DUT Type Phone
--------------------------------	--	------	-------------------

**Exposure Conditions**

Phantom Section, TSL	Position, Test Distance [mm]	Band	Group, UID	Frequency [MHz], Channel Number	Conversion Factor	TSL Conductivity [S/m]	TSL Permittivity
Flat, HSL	EDGE RIGHT, 5.00	WLAN 5GHz	WLAN, 10317-AAD	5745.0, 149	5.08	5.24	35.0

**Hardware Setup**

Phantom	TSL, Measured Date	Probe, Calibration Date	DAE, Calibration Date
ELI V8.0 (20deg probe tilt) - 2178	HSL600-10000 Charge: xxxx, 2023-Sep-18	EX3DV4 - SN7383, 2023-06-05	DAE3 Sn427, 2023-05-17

**Scan Setup**

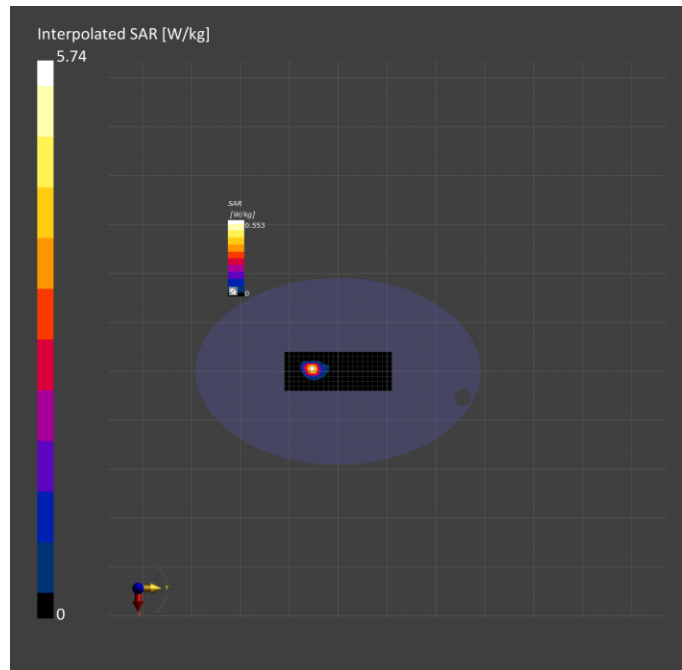
	Area Scan	Zoom Scan
Grid Extents [mm]	80.0 x 220.0	22.0 x 22.0 x 22.0
Grid Steps [mm]	10.0 x 10.0	4.0 x 4.0 x 1.4
Sensor Surface [mm]	3.0	1.4
Graded Grid	Yes	Yes
Grading Ratio	1.5	1.4
MAIA	Y	N/A
Surface Detection	All points	All points
Scan Method	Measured	Measured

**Measurement Results**

	Area Scan	Zoom Scan
Date	2023-09-18, 15:45	2023-09-18, 16:01
psSAR1g [W/kg]	0.959	1.09
psSAR10g [W/kg]	0.339	0.356
Power Drift [dB]	-0.02	-0.06
Power Scaling	Disabled	Disabled
Scaling Factor [dB]		
TSL Correction	No correction	No correction
M2/M1 [%]		58.7
Dist 3dB Peak [mm]		7.2

**Warning(s) / Error(s)**

Details	Area Scan	Zoom Scan
Warning(s) Error(s)		



GSM850 251CH 5mm

Measurement Report for Device, FRONT, GSM 850, UID 10021 DAC, Channel 251 (848.8MHz)

### Device under Test Properties

Model, Manufacturer Device,	Dimensions [mm] 180.0 x 80.0 x 40.0	IMEI	DUT Type Phone
--------------------------------	--	------	-------------------

### Exposure Conditions

Phantom Section, TSL Flat, HSL	Position, Test Distance [mm] FRONT, 5.00	Band GSM 850	Group, UID GSM, 10021-DAC	Frequency [MHz], Channel Number 848.8, 251	Conversion Factor 10.05	TSL Conductivity [S/m] 0.957	TSL Permittivity 41.8
---	---	-----------------	------------------------------------	---	----------------------------	------------------------------------	--------------------------

### Hardware Setup

Phantom ELI V8.0 (20deg probe tilt) - 2178	TSL, Measured Date HSL600-10000 Charge: xxxx, 2023-Sep-11	Probe, Calibration Date EX3DV4 - SN7383, 2023-06-05	DAE, Calibration Date DAE3 Sn427, 2023-05-17
---	---	--	---

### Scan Setup

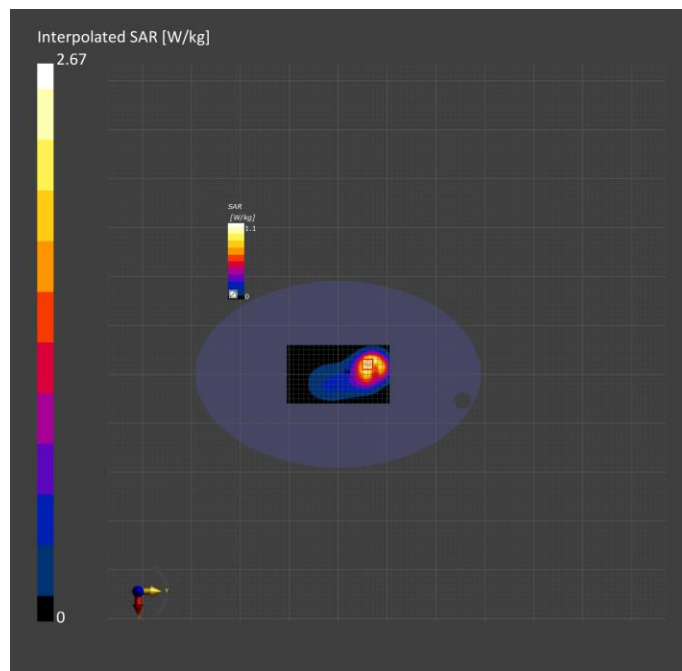
	Area Scan	Zoom Scan
Grid Extents [mm]	120.0 x 210.0	30.0 x 30.0 x 30.0
Grid Steps [mm]	15.0 x 15.0	6.0 x 6.0 x 1.5
Sensor Surface [mm]	3.0	1.4
Graded Grid	Yes	Yes
Grading Ratio	1.5	1.5
MAIA	N/A	N/A
Surface Detection	All points	All points
Scan Method	Measured	Measured

### Measurement Results

	Area Scan	Zoom Scan
Date	2023-09-11, 10:50	2023-09-11, 11:14
psSAR1g [W/kg]	1.24	1.31
psSAR10g [W/kg]	0.805	0.759
Power Drift [dB]	-0.03	0.01
Power Scaling	Disabled	Disabled
Scaling Factor [dB]		
TSL Correction	No correction	No correction
M2/M1 [%]		75.1
Dist 3dB Peak [mm]		14.4

### Warning(s) / Error(s)

Details	Area Scan	Zoom Scan
Warning(s)		
Error(s)		



GSM1900 661CH 5mm

Measurement Report for Device, EDGE BOTTOM, PCS 1900, UID 10021 DAC, Channel 661 (1880.0MHz)

### Device under Test Properties

Model, Manufacturer Device,	Dimensions [mm] 180.0 x 80.0 x 40.0	IMEI	DUT Type Phone
--------------------------------	--	------	-------------------

### Exposure Conditions

Phantom Section, TSL	Position, Test Distance [mm]	Band	Group, UID	Frequency [MHz], Channel Number	Conversion Factor	TSL Conductivity [S/m]	TSL Permittivity
Flat, HSL	EDGE BOTTOM, 5.00	PCS 1900	GSM, 10021-DAC	1880.0, 661	8.42	1.42	39.8

### Hardware Setup

Phantom	TSL, Measured Date	Probe, Calibration Date	DAE, Calibration Date
ELI V8.0 (20deg probe tilt) - 2178	HSL600-10000 Charge: xxxx, 2023-Sep-12	EX3DV4 - SN7383, 2023-06-05	DAE3 Sn427, 2023-05-17

### Scan Setup

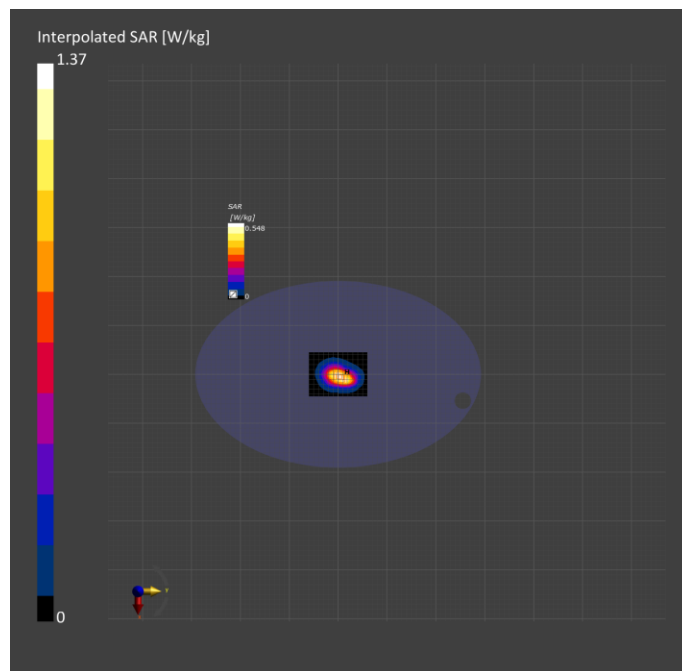
	Area Scan	Zoom Scan
Grid Extents [mm]	90.0 x 120.0	30.0 x 30.0 x 30.0
Grid Steps [mm]	15.0 x 15.0	6.0 x 6.0 x 1.5
Sensor Surface [mm]	3.0	1.4
Graded Grid	Yes	Yes
Grading Ratio	1.5	1.5
MAIA	N/A	N/A
Surface Detection	All points	All points
Scan Method	Measured	Measured

### Measurement Results

	Area Scan	Zoom Scan
Date	2023-09-12, 11:31	2023-09-12, 11:55
psSAR1g [W/kg]	0.620	0.699
psSAR10g [W/kg]	0.364	0.388
Power Drift [dB]	-0.01	-0.02
Power Scaling	Disabled	Disabled
Scaling Factor [dB]		
TSL Correction	No correction	No correction
M2/M1 [%]		78.5
Dist 3dB Peak [mm]		12.4

### Warning(s) / Error(s)

Details	Area Scan	Zoom Scan
Warning(s)		
Error(s)		



WCDMA B2 9262CH 5mm

Measurement Report for Device, EDGE BOTTOM, Band 2, UTRA/FDD, UID 10457 AAA, Channel 9262 (1852.4MHz)

### Device under Test Properties

Model, Manufacturer Device,	Dimensions [mm] 180.0 x 80.0 x 40.0	IMEI	DUT Type Phone
--------------------------------	--	------	-------------------

### Exposure Conditions

Phantom Section, TSL	Position, Test Distance [mm]	Band	Group, UID	Frequency [MHz], Channel Number	Conversion Factor	TSL Conductivity [S/m]	TSL Permittivity
Flat, HSL	EDGE BOTTOM, 5.00	Band 2, UTRA/FDD	WCDMA, 10457-AAA	1852.4, 9262	8.42	1.41	39.6

### Hardware Setup

Phantom	TSL, Measured Date	Probe, Calibration Date	DAE, Calibration Date
ELI V8.0 (20deg probe tilt) - 2178	HSL600-10000 Charge: xxxx, 2023-Sep-04	EX3DV4 - SN7383, 2023-06-05	DAE3 Sn427, 2023-05-17

### Scan Setup

	Area Scan	Zoom Scan
Grid Extents [mm]	90.0 x 120.0	30.0 x 30.0 x 30.0
Grid Steps [mm]	15.0 x 15.0	6.0 x 6.0 x 1.5
Sensor Surface [mm]	3.0	1.4
Graded Grid	Yes	Yes
Grading Ratio	1.5	1.5
MAIA	N/A	N/A
Surface Detection	VMS + 6p	VMS + 6p
Scan Method	Measured	Measured

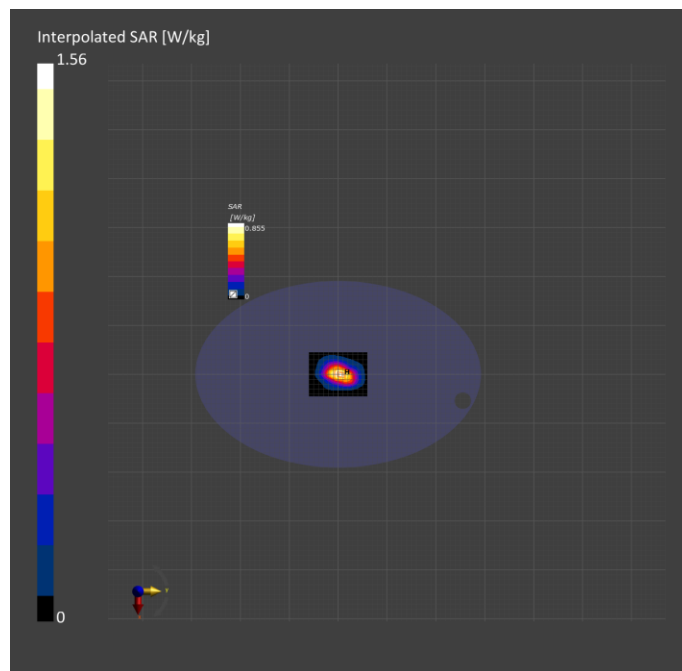
### Measurement Results

	Area Scan	Zoom Scan
Date	2023-09-05, 14:18	2023-09-05, 14:25
psSAR1g [W/kg]	0.787	0.815
psSAR10g [W/kg]	0.451	0.459
Power Drift [dB]	-0.00	-0.01
Power Scaling	Disabled	Disabled
Scaling Factor [dB]		
TSL Correction	No correction	No correction
M2/M1 [%]		79.4
Dist 3dB Peak [mm]		13.0

### Warning(s) / Error(s)

Details	Area Scan	Zoom Scan
---------	-----------	-----------

Warning(s)  
Error(s)



WCDMA B4 1513CH 5mm

Measurement Report for Device, EDGE BOTTOM, Band 4, UTRA/FDD, UID 10457 AAA, Channel 1513 (1752.6MHz)

### Device under Test Properties

Model, Manufacturer Device,	Dimensions [mm] 180.0 x 80.0 x 40.0	IMEI	DUT Type Phone
--------------------------------	--	------	-------------------

### Exposure Conditions

Phantom Section, TSL	Position, Test Distance [mm]	Band	Group, UID	Frequency [MHz], Channel Number	Conversion Factor	TSL Conductivity [S/m]	TSL Permittivity
Flat, HSL	EDGE BOTTOM, 5.00	Band 4, UTRA/FDD	WCDMA, 10457-AAA	1752.6, 1513	8.6	1.37	39.6

### Hardware Setup

Phantom	TSL, Measured Date	Probe, Calibration Date	DAE, Calibration Date
ELI V8.0 (20deg probe tilt) - 2178	HSL600-10000 Charge: xxxx, 2023-Sep-04	EX3DV4 - SN7383, 2023-06-05	DAE3 Sn427, 2023-05-17

### Scan Setup

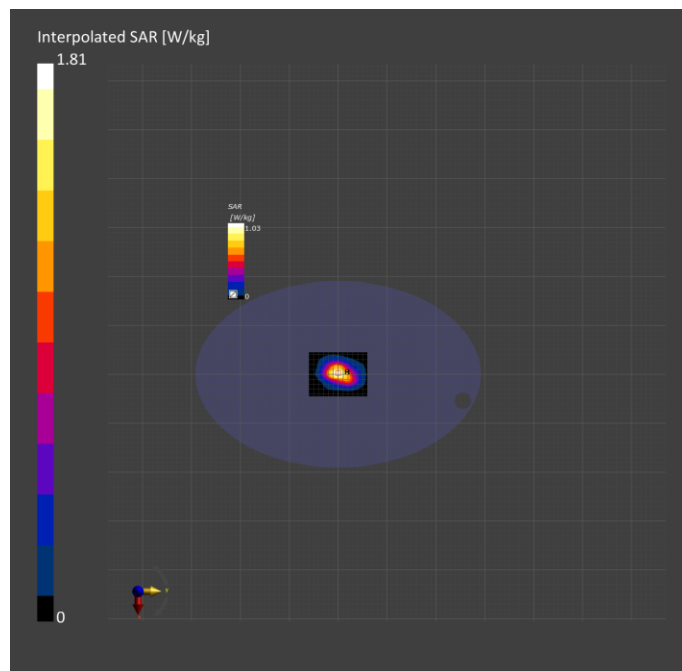
	Area Scan	Zoom Scan
Grid Extents [mm]	90.0 x 120.0	30.0 x 30.0 x 30.0
Grid Steps [mm]	15.0 x 15.0	6.0 x 6.0 x 1.5
Sensor Surface [mm]	3.0	1.4
Graded Grid	Yes	Yes
Grading Ratio	1.5	1.5
MAIA	N/A	N/A
Surface Detection	VMS + 6p	VMS + 6p
Scan Method	Measured	Measured

### Measurement Results

	Area Scan	Zoom Scan
Date	2023-09-05, 15:31	2023-09-05, 15:38
psSAR1g [W/kg]	0.956	0.980
psSAR10g [W/kg]	0.558	0.567
Power Drift [dB]	-0.00	0.00
Power Scaling	Disabled	Disabled
Scaling Factor [dB]		
TSL Correction	No correction	No correction
M2/M1 [%]		80.7
Dist 3dB Peak [mm]		14.6

### Warning(s) / Error(s)

Details	Area Scan	Zoom Scan
Warning(s)		
Error(s)		





WCDMA B5 4183CH 5mm

Measurement Report for Device, FRONT, Band 5, UTRA/FDD, UID 10457 AAA, Channel 4183 (836.6MHz)

### Device under Test Properties

Model, Manufacturer Device,	Dimensions [mm] 180.0 x 80.0 x 40.0	IMEI	DUT Type Phone
--------------------------------	--	------	-------------------

### Exposure Conditions

Phantom Section, TSL	Position, Test Distance [mm]	Band	Group, UID	Frequency [MHz], Channel Number	Conversion Factor	TSL Conductivity [S/m]	TSL Permittivity
Flat, HSL	FRONT, 5.00	Band 5, UTRA/FDD	WCDMA, 10457-AAA	836.6, 4183	10.05	0.938	41.5

### Hardware Setup

Phantom	TSL, Measured Date	Probe, Calibration Date	DAE, Calibration Date
ELI V8.0 (20deg probe tilt) - 2178	HSL600-10000 Charge: xxxx, 2023-Sep-04	EX3DV4 - SN7383, 2023-06-05	DAE3 Sn427, 2023-05-17

### Scan Setup

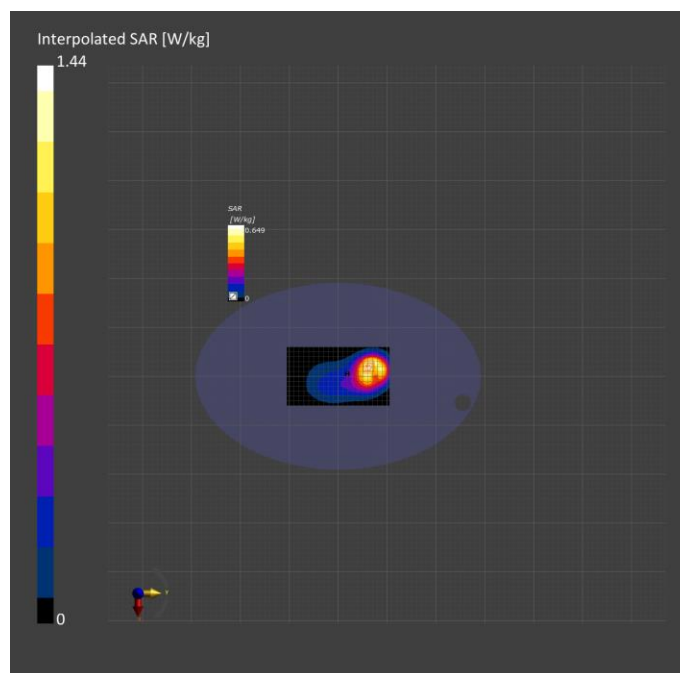
	Area Scan	Zoom Scan
Grid Extents [mm]	120.0 x 210.0	30.0 x 30.0 x 30.0
Grid Steps [mm]	15.0 x 15.0	6.0 x 6.0 x 1.5
Sensor Surface [mm]	3.0	1.4
Graded Grid	Yes	Yes
Grading Ratio	1.5	1.5
MAIA	N/A	N/A
Surface Detection	All points	All points
Scan Method	Measured	Measured

### Measurement Results

	Area Scan	Zoom Scan
Date	2023-09-05, 19:00	2023-09-05, 19:27
psSAR1g [W/kg]	0.706	0.750
psSAR10g [W/kg]	0.471	0.446
Power Drift [dB]	-0.01	0.01
Power Scaling	Disabled	Disabled
Scaling Factor [dB]		
TSL Correction	No correction	No correction
M2/M1 [%]		78.3
Dist 3dB Peak [mm]		16.0

### Warning(s) / Error(s)

Details	Area Scan	Zoom Scan
Warning(s)		
Error(s)		



LTE B2 18700CH 5mm

Measurement Report for Device, EDGE BOTTOM, Band 2, E-UTRA/FDD, UID 10297 AAD, Channel 18700 (1860.0MHz)

### Device under Test Properties

Model, Manufacturer Device,	Dimensions [mm] 180.0 x 80.0 x 40.0	IMEI	DUT Type Phone
--------------------------------	--	------	-------------------

### Exposure Conditions

Phantom Section, TSL	Position, Test Distance [mm]	Band	Group, UID	Frequency [MHz], Channel Number	Conversion Factor	TSL Conductivity [S/m]	TSL Permittivity
Flat, HSL	EDGE BOTTOM, 5.00	Band 2, E-UTRA/FDD	LTE-FDD, 10297-AAD	1860.0, 18700	8.42	1.38	39.4

### Hardware Setup

Phantom	TSL, Measured Date	Probe, Calibration Date	DAE, Calibration Date
ELI V8.0 (20deg probe tilt) - 2178	HSL600-10000 Charge: xxxx, 2023-Aug-31	EX3DV4 - SN7383, 2023-06-05	DAE3 Sn427, 2023-05-17

### Scan Setup

	Area Scan	Zoom Scan
Grid Extents [mm]	90.0 x 120.0	30.0 x 30.0 x 30.0
Grid Steps [mm]	15.0 x 15.0	6.0 x 6.0 x 1.5
Sensor Surface [mm]	3.0	1.4
Graded Grid	Yes	Yes
Grading Ratio	1.5	1.5
MAIA	N/A	N/A
Surface Detection	VMS + 6p	VMS + 6p
Scan Method	Measured	Measured

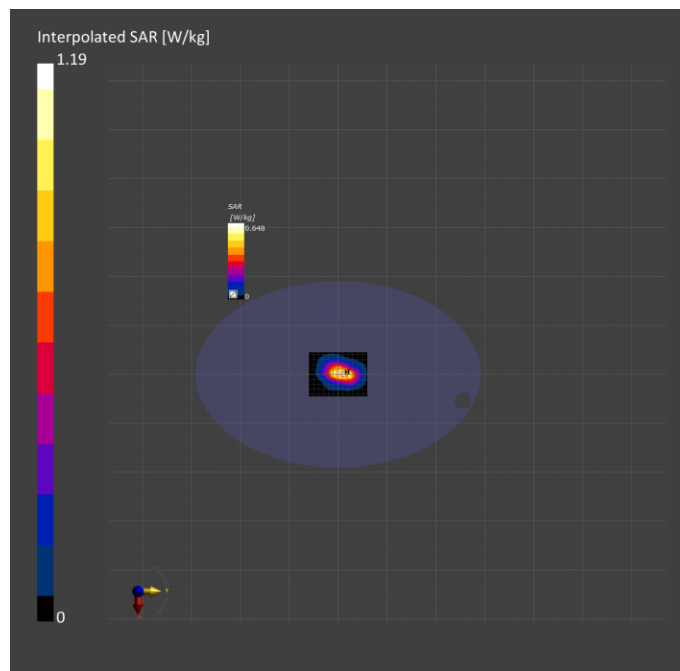
### Measurement Results

	Area Scan	Zoom Scan
Date	2023-08-31, 14:18	2023-08-31, 14:25
psSAR1g [W/kg]	0.595	0.605
psSAR10g [W/kg]	0.337	0.338
Power Drift [dB]	0.01	0.00
Power Scaling	Disabled	Disabled
Scaling Factor [dB]		
TSL Correction	No correction	No correction
M2/M1 [%]		78.6
Dist 3dB Peak [mm]		11.8

### Warning(s) / Error(s)

Details	Area Scan	Zoom Scan
---------	-----------	-----------

Warning(s)  
Error(s)



LTE B4 20300CH 5mm

Measurement Report for Device, EDGE BOTTOM, Band 4, E-UTRA/FDD, UID 10297 AAD, Channel 20300 (1745.0MHz)

### Device under Test Properties

Model, Manufacturer Device,	Dimensions [mm] 180.0 x 80.0 x 40.0	IMEI	DUT Type Phone
--------------------------------	--	------	-------------------

### Exposure Conditions

Phantom Section, TSL Flat, HSL	Position, Test Distance [mm] EDGE BOTTOM, 5.00	Band Band 4, E-UTRA/FDD	Group, UID LTE-FDD, 10297-AAD	Frequency [MHz], Channel Number 1745.0, 20300	Conversion Factor 8.6	TSL Conductivity [S/m] 1.35	TSL Permittivity 39.3
---	---	-------------------------------	--	--	--------------------------	-----------------------------------	--------------------------

### Hardware Setup

Phantom ELI V8.0 (20deg probe tilt) - 2178	TSL, Measured Date HSL600-10000 Charge: xxxx, 2023-Aug-31	Probe, Calibration Date EX3DV4 - SN7383, 2023-06-05	DAE, Calibration Date DAE3 Sn427, 2023-05-17
---	---	--	---

### Scan Setup

	Area Scan	Zoom Scan
Grid Extents [mm]	90.0 x 120.0	30.0 x 30.0 x 30.0
Grid Steps [mm]	15.0 x 15.0	6.0 x 6.0 x 1.5
Sensor Surface [mm]	3.0	1.4
Graded Grid	Yes	Yes
Grading Ratio	1.5	1.5
MAIA	N/A	N/A
Surface Detection	VMS + 6p	VMS + 6p
Scan Method	Measured	Measured

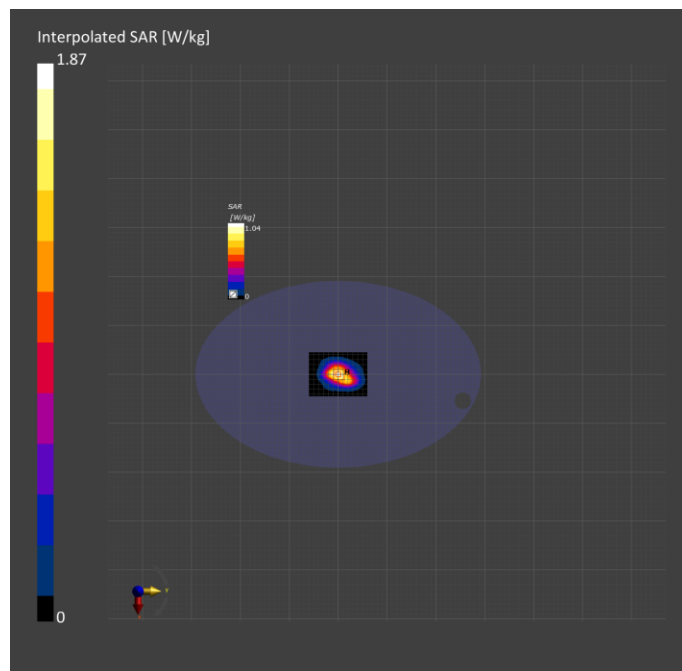
### Measurement Results

	Area Scan	Zoom Scan
Date	2023-08-31, 16:23	2023-08-31, 16:29
psSAR1g [W/kg]	0.977	1.01
psSAR10g [W/kg]	0.567	0.589
Power Drift [dB]	0.02	-0.01
Power Scaling	Disabled	Disabled
Scaling Factor [dB]		
TSL Correction	No correction	No correction
M2/M1 [%]		80.2
Dist 3dB Peak [mm]		15.0

### Warning(s) / Error(s)

Details	Area Scan	Zoom Scan
---------	-----------	-----------

Warning(s)  
Error(s)



LTE B5 20600CH 5mm

Measurement Report for Device, FRONT, Band 5, E-UTRA/FDD, UID 10175 CAG, Channel 20600 (844.0MHz)

### Device under Test Properties

Model, Manufacturer Device,	Dimensions [mm] 180.0 x 80.0 x 40.0	IMEI	DUT Type Phone
--------------------------------	--	------	-------------------

### Exposure Conditions

Phantom Section, TSL	Position, Test Distance [mm]	Band	Group, UID	Frequency [MHz], Channel Number	Conversion Factor	TSL Conductivity [S/m]	TSL Permittivity
Flat, HSL	FRONT, 5.00	Band 5, E-UTRA/FDD	LTE-FDD, 10175-CAG	844.0, 20600	10.05	0.933	41.3

### Hardware Setup

Phantom	TSL, Measured Date	Probe, Calibration Date	DAE, Calibration Date
ELI V8.0 (20deg probe tilt) - 2178	HSL600-10000 Charge: xxxx, 2023-Aug-31	EX3DV4 - SN7383, 2023-06-05	DAE3 Sn427, 2023-05-17

### Scan Setup

	Area Scan	Zoom Scan
Grid Extents [mm]	120.0 x 210.0	30.0 x 30.0 x 30.0
Grid Steps [mm]	15.0 x 15.0	6.0 x 6.0 x 1.5
Sensor Surface [mm]	3.0	1.4
Graded Grid	Yes	Yes
Grading Ratio	1.5	1.5
MAIA	N/A	N/A
Surface Detection	VMS + 6p	VMS + 6p
Scan Method	Measured	Measured

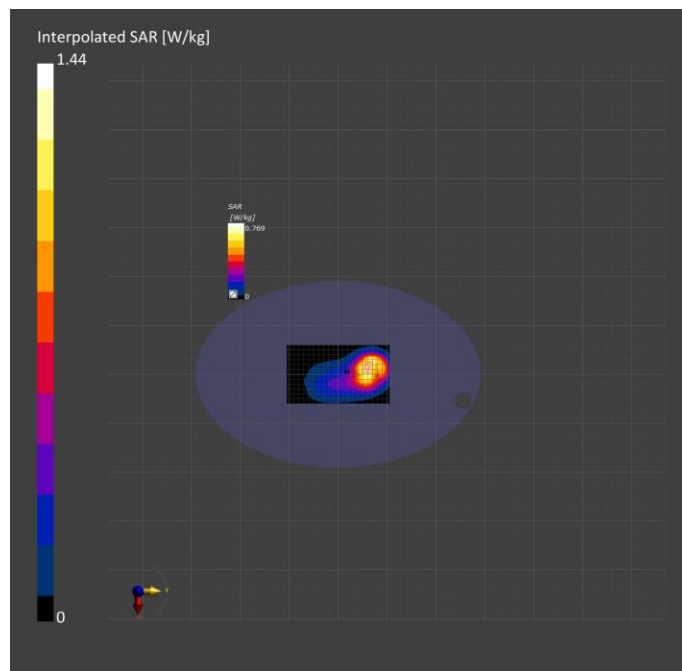
### Measurement Results

	Area Scan	Zoom Scan
Date	2023-09-01, 10:03	2023-09-01, 10:16
psSAR1g [W/kg]	0.743	0.766
psSAR10g [W/kg]	0.490	0.447
Power Drift [dB]	0.01	-0.00
Power Scaling	Disabled	Disabled
Scaling Factor [dB]		
TSL Correction	No correction	No correction
M2/M1 [%]		79.8
Dist 3dB Peak [mm]		17.7

### Warning(s) / Error(s)

Details	Area Scan	Zoom Scan
---------	-----------	-----------

Warning(s)  
Error(s)



LTE B7 21350CH 5mm

Measurement Report for Device, EDGE BOTTOM, Band 7, E-UTRA/FDD, UID 10297 AAD, Channel 21350 (2560.0MHz)

### Device under Test Properties

Model, Manufacturer Device,	Dimensions [mm] 180.0 x 80.0 x 40.0	IMEI	DUT Type Phone
--------------------------------	--	------	-------------------

### Exposure Conditions

Phantom Section, TSL	Position, Test Distance [mm]	Band	Group, UID	Frequency [MHz], Channel Number	Conversion Factor	TSL Conductivity [S/m]	TSL Permittivity
Flat, HSL	EDGE BOTTOM, 5.00	Band 7, E-UTRA/FDD	LTE-FDD, 10297-AAD	2560.0, 21350	7.65	1.91	38.6

### Hardware Setup

Phantom	TSL, Measured Date	Probe, Calibration Date	DAE, Calibration Date
ELI V8.0 (20deg probe tilt) - 2178	HSL600-10000 Charge: xxxx, 2023-Aug-31	EX3DV4 - SN7383, 2023-06-05	DAE3 Sn427, 2023-05-17

### Scan Setup

	Area Scan	Zoom Scan
Grid Extents [mm]	80.0 x 120.0	30.0 x 30.0 x 30.0
Grid Steps [mm]	10.0 x 10.0	5.0 x 5.0 x 1.5
Sensor Surface [mm]	3.0	1.4
Graded Grid	Yes	Yes
Grading Ratio	1.5	1.5
MAIA	N/A	N/A
Surface Detection	VMS + 6p	VMS + 6p
Scan Method	Measured	Measured

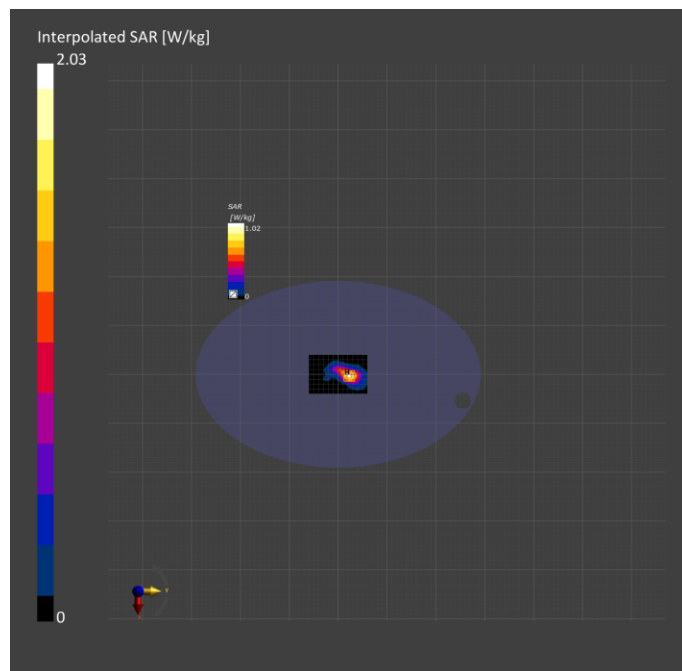
### Measurement Results

	Area Scan	Zoom Scan
Date	2023-09-01, 11:23	2023-09-01, 11:30
psSAR1g [W/kg]	0.934	0.954
psSAR10g [W/kg]	0.449	0.445
Power Drift [dB]	-0.01	0.04
Power Scaling	Disabled	Disabled
Scaling Factor [dB]		
TSL Correction	No correction	No correction
M2/M1 [%]		78.9
Dist 3dB Peak [mm]		9.8

### Warning(s) / Error(s)

Details	Area Scan	Zoom Scan
---------	-----------	-----------

Warning(s)  
Error(s)



LTE B12 23095CH 5mm

Measurement Report for Device, FRONT, Band 12, E-UTRA/FDD, UID 10175 CAG, Channel 23095 (707.5MHz)

### Device under Test Properties

Model, Manufacturer Device,	Dimensions [mm] 180.0 x 80.0 x 40.0	IMEI	DUT Type Phone
--------------------------------	--	------	-------------------

### Exposure Conditions

Phantom Section, TSL	Position, Test Distance [mm]	Band	Group, UID	Frequency [MHz], Channel Number	Conversion Factor	TSL Conductivity [S/m]	TSL Permittivity
Flat, HSL	FRONT, 5.00	Band 12, E-UTRA/FDD	LTE-FDD, 10175-CAG	707.5, 23095	10.45	0.880	41.3

### Hardware Setup

Phantom	TSL, Measured Date	Probe, Calibration Date	DAE, Calibration Date
ELI V8.0 (20deg probe tilt) - 2178	HSL600-10000 Charge: xxxx, 2023-Aug-31	EX3DV4 - SN7383, 2023-06-05	DAE3 Sn427, 2023-05-17

### Scan Setup

	Area Scan	Zoom Scan
Grid Extents [mm]	120.0 x 210.0	30.0 x 30.0 x 30.0
Grid Steps [mm]	15.0 x 15.0	6.0 x 6.0 x 1.5
Sensor Surface [mm]	3.0	1.4
Graded Grid	Yes	Yes
Grading Ratio	1.5	1.5
MAIA	N/A	N/A
Surface Detection	All points	All points
Scan Method	Measured	Measured

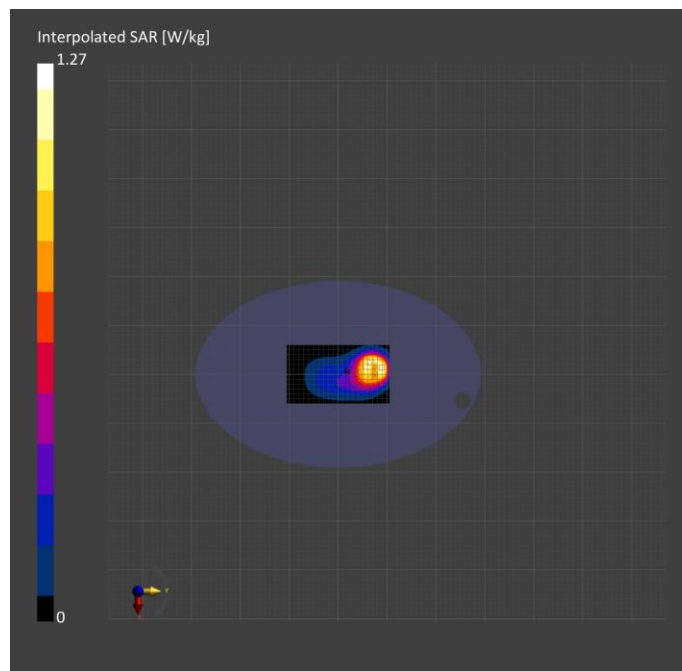
### Measurement Results

	Area Scan	Zoom Scan
Date	2023-09-01, 14:49	2023-09-01, 15:12
psSAR1g [W/kg]	0.627	0.648
psSAR10g [W/kg]	0.417	0.365
Power Drift [dB]	-0.10	-0.01
Power Scaling	Disabled	Disabled
Scaling Factor [dB]		
TSL Correction	No correction	No correction
M2/M1 [%]		77.5
Dist 3dB Peak [mm]		14.5

### Warning(s) / Error(s)

Details	Area Scan	Zoom Scan
---------	-----------	-----------

Warning(s)  
Error(s)



LTE B17 23095CH 5mm

Measurement Report for Device, FRONT, Band 17, E-UTRA/FDD, UID 10175 CAG, Channel 23790 (710.0MHz)

### Device under Test Properties

Model, Manufacturer Device,	Dimensions [mm] 180.0 x 80.0 x 40.0	IMEI	DUT Type Phone
--------------------------------	--	------	-------------------

### Exposure Conditions

Phantom Section, TSL	Position, Test Distance [mm]	Band	Group, UID	Frequency [MHz], Channel Number	Conversion Factor	TSL Conductivity [S/m]	TSL Permittivity
Flat, HSL	FRONT, 5.00	Band 17, E-UTRA/FDD	LTE-FDD, 10175-CAG	710.0, 23790	10.45	0.881	41.3

### Hardware Setup

Phantom	TSL, Measured Date	Probe, Calibration Date	DAE, Calibration Date
ELI V8.0 (20deg probe tilt) - 2178	HSL600-10000 Charge: xxxx, 2023-Aug-31	EX3DV4 - SN7383, 2023-06-05	DAE3 Sn427, 2023-05-17

### Scan Setup

	Area Scan	Zoom Scan
Grid Extents [mm]	120.0 x 210.0	30.0 x 30.0 x 30.0
Grid Steps [mm]	15.0 x 15.0	6.0 x 6.0 x 1.5
Sensor Surface [mm]	3.0	1.4
Graded Grid	Yes	Yes
Grading Ratio	1.5	1.5
MAIA	N/A	N/A
Surface Detection	VMS + 6p	VMS + 6p
Scan Method	Measured	Measured

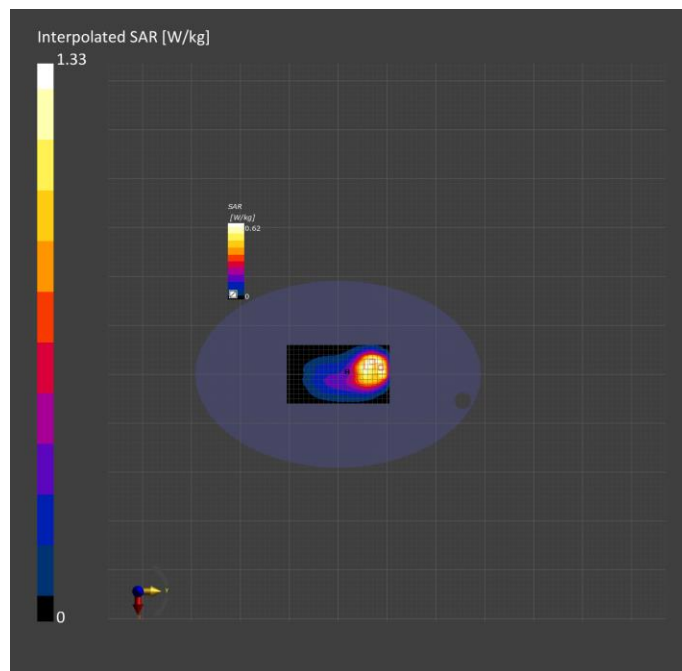
### Measurement Results

	Area Scan	Zoom Scan
Date	2023-09-01, 15:34	2023-09-01, 15:52
psSAR1g [W/kg]	0.606	0.636
psSAR10g [W/kg]	0.409	0.361
Power Drift [dB]	0.00	-0.00
Power Scaling	Disabled	Disabled
Scaling Factor [dB]		
TSL Correction	No correction	No correction
M2/M1 [%]		78.4
Dist 3dB Peak [mm]		14.8

### Warning(s) / Error(s)

Details	Area Scan	Zoom Scan
---------	-----------	-----------

Warning(s)  
Error(s)



LTE B25 26365CH 5mm

Measurement Report for Device, EDGE BOTTOM, Band 25, E-UTRA/FDD, UID 10169 CAE, Channel 26365 (1882.5MHz)

### Device under Test Properties

Model, Manufacturer Device,	Dimensions [mm] 180.0 x 80.0 x 40.0	IMEI	DUT Type Phone
--------------------------------	--	------	-------------------

### Exposure Conditions

Phantom Section, TSL	Position, Test Distance [mm]	Band	Group, UID	Frequency [MHz], Channel Number	Conversion Factor	TSL Conductivity [S/m]	TSL Permittivity
Flat, HSL	EDGE BOTTOM, 5.00	Band 25, E-UTRA/FDD	LTE-FDD, 10169-CAE	1882.5, 26365	8.42	1.37	39.3

### Hardware Setup

Phantom	TSL, Measured Date	Probe, Calibration Date	DAE, Calibration Date
ELI V8.0 (20deg probe tilt) - 2178	HSL600-10000 Charge: xxxx, 2023-Aug-31	EX3DV4 - SN7383, 2023-06-05	DAE3 Sn427, 2023-05-17

### Scan Setup

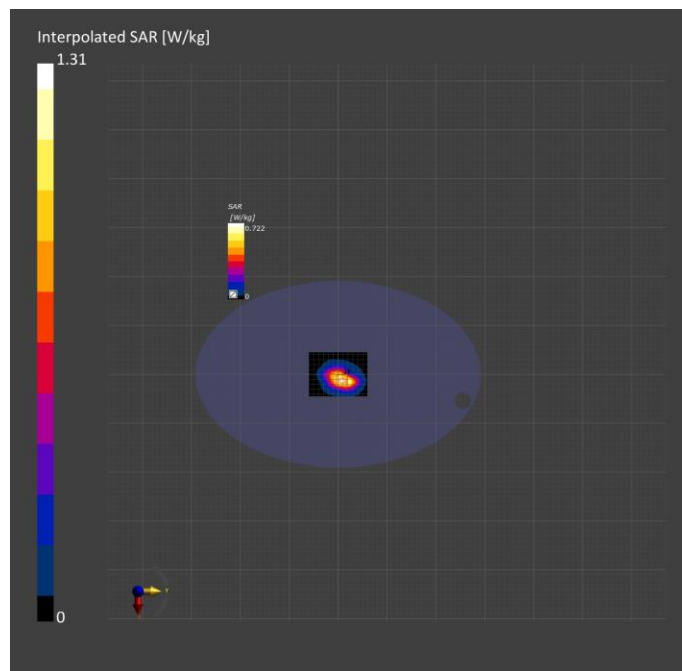
	Area Scan	Zoom Scan
Grid Extents [mm]	90.0 x 120.0	30.0 x 30.0 x 30.0
Grid Steps [mm]	15.0 x 15.0	6.0 x 6.0 x 1.5
Sensor Surface [mm]	3.0	1.4
Graded Grid	Yes	Yes
Grading Ratio	1.5	1.5
MAIA	N/A	N/A
Surface Detection	VMS + 6p	VMS + 6p
Scan Method	Measured	Measured

### Measurement Results

	Area Scan	Zoom Scan
Date	2023-09-01, 16:22	2023-09-01, 16:29
psSAR1g [W/kg]	0.670	0.683
psSAR10g [W/kg]	0.382	0.382
Power Drift [dB]	-0.00	-0.00
Power Scaling	Disabled	Disabled
Scaling Factor [dB]		
TSL Correction	No correction	No correction
M2/M1 [%]		79.5
Dist 3dB Peak [mm]		12.2

### Warning(s) / Error(s)

Details	Area Scan	Zoom Scan
Warning(s)		
Error(s)		





LTE B26 26965CH 5mm

Measurement Report for Device, FRONT, Band 26 E-UTRA/FDD, UID 10181 CAE, Channel 26965 (841.5MHz)

### Device under Test Properties

Model, Manufacturer Device,	Dimensions [mm] 180.0 x 80.0 x 40.0	IMEI	DUT Type Phone
--------------------------------	--	------	-------------------

### Exposure Conditions

Phantom Section, TSL	Position, Test Distance [mm]	Band	Group, UID	Frequency [MHz], Channel Number	Conversion Factor	TSL Conductivity [S/m]	TSL Permittivity
Flat, HSL	FRONT, 5.00	Band 26 E-UTRA/FDD	LTE-FDD, 10181-CAE	841.5, 26965	10.05	0.931	41.3

### Hardware Setup

Phantom	TSL, Measured Date	Probe, Calibration Date	DAE, Calibration Date
ELI V8.0 (20deg probe tilt) - 2178	HSL600-10000 Charge: xxxx, 2023-Sep-04	EX3DV4 - SN7383, 2023-06-05	DAE3 Sn427, 2023-05-17

### Scan Setup

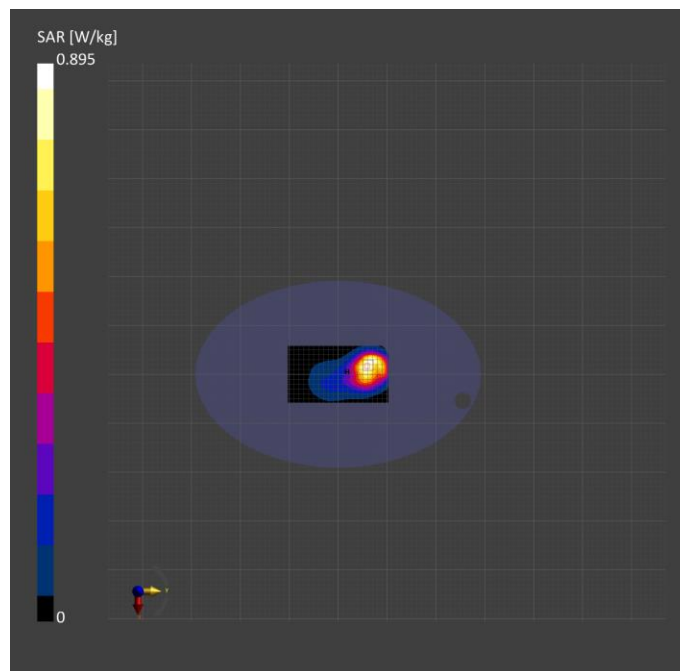
	Area Scan	Zoom Scan
Grid Extents [mm]	120.0 x 210.0	30.0 x 30.0 x 30.0
Grid Steps [mm]	15.0 x 15.0	6.0 x 6.0 x 1.5
Sensor Surface [mm]	3.0	1.4
Graded Grid	Yes	Yes
Grading Ratio	1.5	1.5
MAIA	N/A	N/A
Surface Detection	VMS + 6p	VMS + 6p
Scan Method	Measured	Measured

### Measurement Results

	Area Scan	Zoom Scan
Date	2023-09-04, 10:28	2023-09-04, 10:42
psSAR1g [W/kg]	0.896	0.954
psSAR10g [W/kg]	0.594	0.570
Power Drift [dB]	0.04	-0.00
Power Scaling	Disabled	Disabled
Scaling Factor [dB]		
TSL Correction	No correction	No correction
M2/M1 [%]		78.9
Dist 3dB Peak [mm]		15.6

### Warning(s) / Error(s)

Details	Area Scan	Zoom Scan
Warning(s)		
Error(s)		



LTE B38 38150CH 5mm

Measurement Report for Device, EDGE BOTTOM, Band 38, E-UTRA/TDD, UID 10435 AAF, Channel 38150 (2610.0MHz)

### Device under Test Properties

Model, Manufacturer Device,	Dimensions [mm] 180.0 x 80.0 x 40.0	IMEI	DUT Type Phone
--------------------------------	--	------	-------------------

### Exposure Conditions

Phantom Section, TSL	Position, Test Distance [mm]	Band	Group, UID	Frequency [MHz], Channel Number	Conversion Factor	TSL Conductivity [S/m]	TSL Permittivity
Flat, HSL	EDGE BOTTOM, 5.00	Band 38, E-UTRA/TDD	LTE-TDD, 10435-AAF	2610.0, 38150	7.65	1.98	38.7

### Hardware Setup

Phantom	TSL, Measured Date	Probe, Calibration Date	DAE, Calibration Date
ELI V8.0 (20deg probe tilt) - 2178	HSL600-10000 Charge: xxxx, 2023-Sep-04	EX3DV4 - SN7383, 2023-06-05	DAE3 Sn427, 2023-05-17

### Scan Setup

	Area Scan	Zoom Scan
Grid Extents [mm]	80.0 x 120.0	30.0 x 30.0 x 30.0
Grid Steps [mm]	10.0 x 10.0	5.0 x 5.0 x 1.5
Sensor Surface [mm]	3.0	1.4
Graded Grid	Yes	Yes
Grading Ratio	1.5	1.5
MAIA	N/A	N/A
Surface Detection	VMS + 6p	VMS + 6p
Scan Method	Measured	Measured

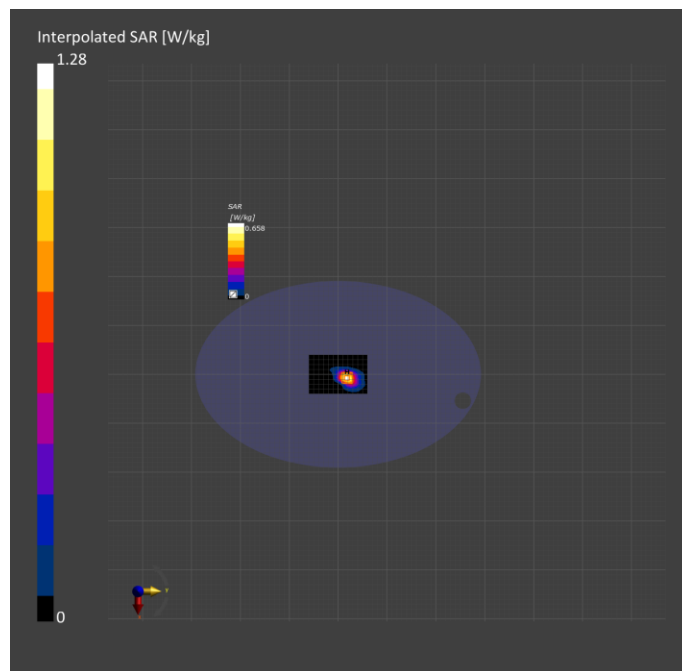
### Measurement Results

	Area Scan	Zoom Scan
Date	2023-09-04, 14:01	2023-09-04, 14:08
psSAR1g [W/kg]	0.585	0.588
psSAR10g [W/kg]	0.277	0.270
Power Drift [dB]	0.01	0.00
Power Scaling	Disabled	Disabled
Scaling Factor [dB]		
TSL Correction	No correction	No correction
M2/M1 [%]		77.9
Dist 3dB Peak [mm]		9.8

### Warning(s) / Error(s)

Details	Area Scan	Zoom Scan
---------	-----------	-----------

Warning(s)  
Error(s)



LTE B41 41140CH 5mm

Measurement Report for Device, EDGE BOTTOM, Band 41, E-UTRA/TDD, UID 10435 AAF, Channel 41140 (2645.0MHz)

### Device under Test Properties

Model, Manufacturer Device,	Dimensions [mm] 180.0 x 80.0 x 40.0	IMEI	DUT Type Phone
--------------------------------	--	------	-------------------

### Exposure Conditions

Phantom Section, TSL Flat, HSL	Position, Test Distance [mm] EDGE BOTTOM, 5.00	Band Band 41, E-UTRA/TDD	Group, UID LTE-TDD, 10435-AAF	Frequency [MHz], Channel Number 2645.0, 41140	Conversion Factor 7.65	TSL Conductivity [S/m] 2.02	TSL Permittivity 38.8
---	---	--------------------------------	--	--	---------------------------	-----------------------------------	--------------------------

### Hardware Setup

Phantom ELI V8.0 (20deg probe tilt) - 2178	TSL, Measured Date HSL600-10000 Charge: xxxx, 2023-Sep-25	Probe, Calibration Date EX3DV4 - SN7383, 2023-06-05	DAE, Calibration Date DAE3 Sn427, 2023-05-17
---	---	--	---

### Scan Setup

	Area Scan	Zoom Scan
Grid Extents [mm]	80.0 x 120.0	30.0 x 30.0 x 30.0
Grid Steps [mm]	10.0 x 10.0	5.0 x 5.0 x 1.5
Sensor Surface [mm]	3.0	1.4
Graded Grid	Yes	Yes
Grading Ratio	1.5	1.5
MAIA	N/A	N/A
Surface Detection	All points	All points
Scan Method	Measured	Measured

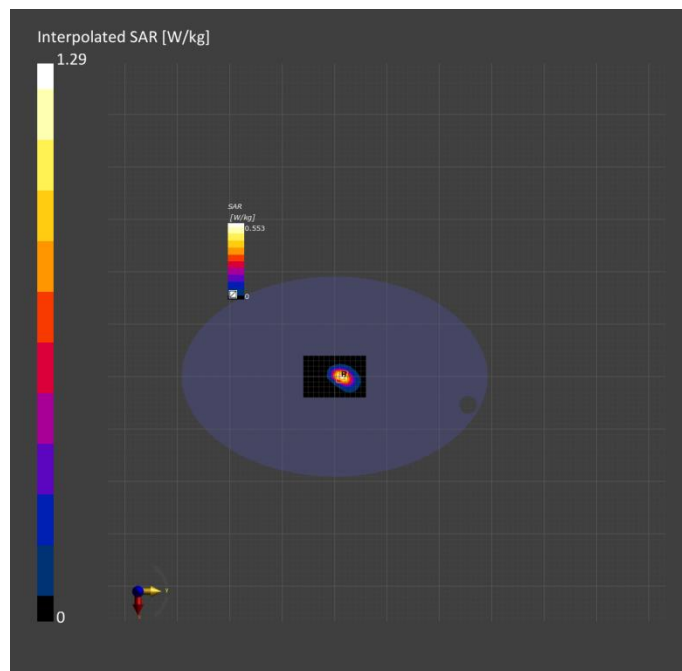
### Measurement Results

	Area Scan	Zoom Scan
Date	2023-09-25, 10:18	2023-09-25, 10:31
psSAR1g [W/kg]	0.612	0.616
psSAR10g [W/kg]	0.288	0.290
Power Drift [dB]	0.01	-0.00
Power Scaling	Disabled	Disabled
Scaling Factor [dB]		
TSL Correction	No correction	No correction
M2/M1 [%]		79.5
Dist 3dB Peak [mm]		9.4

### Warning(s) / Error(s)

Details	Area Scan	Zoom Scan
---------	-----------	-----------

Warning(s)  
Error(s)



LTE B66 38150CH 5mm

Measurement Report for Device, EDGE BOTTOM, Band 66, E-UTRA/FDD, UID 10169 CAE, Channel 132322 (1745.0MHz)

### Device under Test Properties

Model, Manufacturer Device,	Dimensions [mm] 180.0 x 80.0 x 40.0	IMEI	DUT Type Phone
--------------------------------	--	------	-------------------

### Exposure Conditions

Phantom Section, TSL	Position, Test Distance [mm]	Band	Group, UID	Frequency [MHz], Channel Number	Conversion Factor	TSL Conductivity [S/m]	TSL Permittivity
Flat, HSL	EDGE BOTTOM, 5.00	Band 66, E-UTRA/FDD	LTE-FDD, 10169-CAE	1745.0, 132322	8.6	1.37	39.6

### Hardware Setup

Phantom	TSL, Measured Date	Probe, Calibration Date	DAE, Calibration Date
ELI V8.0 (20deg probe tilt) - 2178	HSL600-10000 Charge: xxxx, 2023-Sep-04	EX3DV4 - SN7383, 2023-06-05	DAE3 Sn427, 2023-05-17

### Scan Setup

	Area Scan	Zoom Scan
Grid Extents [mm]	90.0 x 120.0	30.0 x 30.0 x 30.0
Grid Steps [mm]	15.0 x 15.0	6.0 x 6.0 x 1.5
Sensor Surface [mm]	3.0	1.4
Graded Grid	Yes	Yes
Grading Ratio	1.5	1.5
MAIA	N/A	N/A
Surface Detection	VMS + 6p	VMS + 6p
Scan Method	Measured	Measured

### Measurement Results

	Area Scan	Zoom Scan
Date	2023-09-04, 17:11	2023-09-04, 17:17
psSAR1g [W/kg]	1.05	1.08
psSAR10g [W/kg]	0.611	0.623
Power Drift [dB]	-0.01	0.02
Power Scaling	Disabled	Disabled
Scaling Factor [dB]		
TSL Correction	No correction	No correction
M2/M1 [%]		79.9
Dist 3dB Peak [mm]		14.0

### Warning(s) / Error(s)

Details	Area Scan	Zoom Scan
---------	-----------	-----------

Warning(s)  
Error(s)

