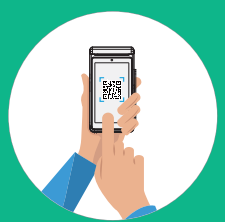


Code scanning

Your device supports to scan bar code and QR code.

1. Launch the app.
2. Put the QR code / bar code into the box. Your device will read the information automatically.



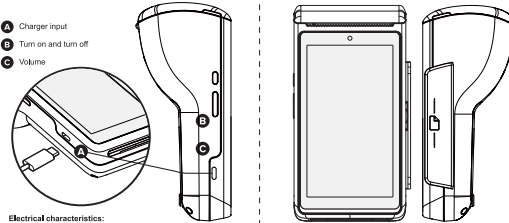
CAUTION
Risk of explosion: If the battery is recharged an incorrect disposal of a battery into fire or a hot oven, or mechanically crushing or cutting of a battery, that can result in an explosion leaving a battery in an enclosed high temperature surrounding environment that can result in an explosion or the leakage of flammable liquid or gas, battery subjected to external force or pressure that may result in an explosion or leakage of flammable liquid.

120mm

70mm

Welcome to D30

- A** Charger input
- B** Turn on and turn off
- C** Volume



Electrical characteristics:
 Power supply: 5V×2A Input: 100-240V 50/60Hz×3A
 Output: 5.0V×2000 mA

FCC Regulatory Compliance
 Changes or modifications not expressly approved by the party responsible for compliance could void the user's authority to operate the equipment.
 This equipment has been tested and found to comply with the limits for Class B digital devices, pursuant to Part 15 of the FCC rules, which provides for certain protection against harmful interference to radio communications. However, there is no guarantee that interference will not occur in a particular installation.

If this equipment does cause harmful interference to radio or television reception, which can be determined by turning the equipment off, the user is encouraged to take one or more of the following measures:
 • Reorient or relocate the receiving antenna.
 • Increase the separation between the equipment and receiver.
 • Connect the equipment into an outlet on a circuit different from that to which the receiver is connected.
 • Consult the dealer or an experienced radio/TV technician for help.
 This device complies with Part 15 of the FCC Rules. Operation is subject to the following two conditions: (1) This device may not cause harmful interference, and (2) this device must accept any interference received, including interference that may cause undesired operation.
RF Exposure Compliance:
 This equipment complies with FCC radiation exposure limits set forth for an uncontrolled environment. End user must follow the equipment instructions. This transmitter must not be co-located or operating in conjunction with any other antenna or transmitter. The portable device is designed to meet the requirements for exposure to radio waves established by the Federal Communications Commission (FCC) for a mobile phone. The highest SAR value reported under the standard during product certification for use when properly worn on the head is 1.61 W/kg (averaged over 1g of tissue). The highest SAR value reported under the standard during product certification for use when properly worn on the head is 1.61 W/kg (averaged over 1g of tissue). The device complies with the RF specifications when the device is used at a distance of 0mm from your body.

How to take care of your reader

- Keep it in environments with temperatures between 0°C and 40°C.
- Clean it using a dry cloth. Do not use water or other cleaning products.
- Use only the battery charger included with the reader. Do not connect it to a power source of more than 5 volts.
- Avoid contact with microwaves or extreme heat sources such as hair dryers and stoves.
- Do not submerge it in water or place it near sinks, bathrooms or any other damp place.
- Avoid exposing the battery in contact with metallic objects or in places that can generate short circuits or fires.
- Do not use sharp tools to touch or attempt to separate internal components or connectors.
- Do not drop, disarm, tear out, open, crush, bend, warp, drill, shred, paint, incinerate, or insert foreign objects into the reader.
- Do not open it or try to fit it on your own. We can help you in case of malfunction.
- The reader contains small detachable parts and therefore should be kept away from children. If any of the small objects are accidentally swallowed, see a doctor immediately.

Operation of this equipment is subject to the following two conditions:

1. The equipment or device may not cause harmful interference.
2. This equipment or device must accept any interference received, including interference that may cause undesired operation.

D30

Smart POS

QUICK GUIDE

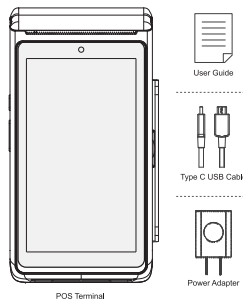
We recommend you read this guide to your reader correctly and to make the most of it.



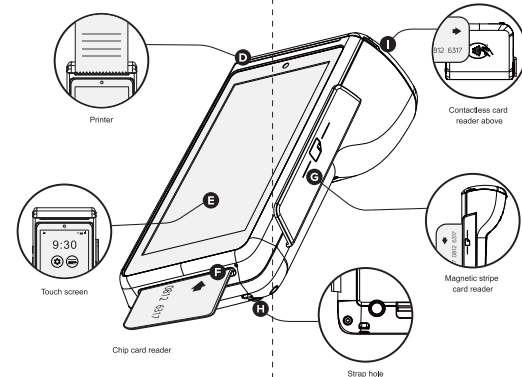
Device layout

Package contents

All items listed here were included with your device.

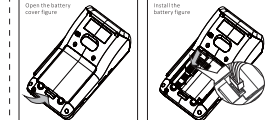


Welcome to D30

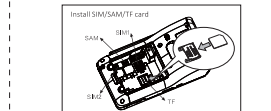


Installation Guidance

1. Install the battery
 - Open the battery cover of the device.
 - Connect the cable of the battery to the right side battery connector on the machine and put the battery to its place. (The label on the battery covers).
 - Close the battery cover.

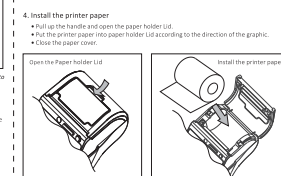


2. Install SIM/SAM card
 - Open the battery cover and remove the battery.
 - Keep the chip on the SIM/SAM card downward and unified corner outward, insert the card to the bottom.
 - Install the battery and then close the battery cover.



3. Power on/off the device
 - Power on: press and hold the power key until the LCD display, then the machine will be turned on.
 - Power off: press and hold the power key more than 2 seconds, then the screen will give you a tip, you just choose the shutdown key. Force shut down. Press the power key more than 8 seconds.

4. Install the printer paper
 - Pull up the handle and open the paper holder lid.
 - Put the printer paper into paper holder lid according to the direction of the graphic.
 - Close the paper cover.



- NOTE:**
1. When install thermal paper, we need the side coated with thermal resin facing the printer heating plate, or you can not print out the characters correctly.
 2. Do not press the printer paper too long time, or it may cause the roller pressing with the paper.
 3. The temperature is high on the heating plate, please do not touch it without cooling.
 4. Tear-off Angle edge is sharp, please be careful. Do not touch it for avoiding danger.