



RSE TX above 1GHz Result

Appendix E.2

Mode	Result	Type	Freq (Hz)	Level (dBuV/m)	Limit (dBuV/m)	Margin (dB)	Factor (dB)	Dist (m)	Condition	Azimuth (°)	Height (m)	Comments
5240MHz	Pass	PK	5.147G	55.53	74.00	-18.47	2.74	3	Vertical	352	1.01	-
5240MHz	Pass	PK	5.2418G	115.45	Inf	-Inf	2.85	3	Vertical	352	1.01	-
5240MHz	Pass	PK	5.3786G	55.30	74.00	-18.70	3.01	3	Vertical	352	1.01	-
5240MHz	Pass	AV	5.0906G	41.97	54.00	-12.03	2.66	3	Horizontal	345	2.84	-
5240MHz	Pass	AV	5.2412G	103.77	Inf	-Inf	2.84	3	Horizontal	345	2.84	-
5240MHz	Pass	AV	5.35G	41.37	54.00	-12.63	2.97	3	Horizontal	345	2.84	-
5240MHz	Pass	PK	5.111G	55.79	74.00	-18.21	2.70	3	Horizontal	345	2.84	-
5240MHz	Pass	PK	5.2412G	114.52	Inf	-Inf	2.84	3	Horizontal	345	2.84	-
5240MHz	Pass	PK	5.3852G	54.49	74.00	-19.51	3.01	3	Horizontal	345	2.84	-
5240MHz	Pass	AV	10.47994G	39.86	54.00	-14.14	12.90	3	Vertical	343	2.24	-
5240MHz	Pass	PK	10.48546G	53.30	74.00	-20.70	12.91	3	Vertical	343	2.24	-
5240MHz	Pass	AV	10.48522G	39.80	54.00	-14.20	12.91	3	Horizontal	18	1.50	-
5240MHz	Pass	PK	10.47064G	53.81	74.00	-20.19	12.88	3	Horizontal	18	1.50	-
5260MHz	Pass	AV	5.11G	42.03	54.00	-11.97	2.70	3	Vertical	333	1.01	-
5260MHz	Pass	AV	5.2588G	105.10	Inf	-Inf	2.87	3	Vertical	333	1.01	-
5260MHz	Pass	AV	5.35G	42.10	54.00	-11.90	2.97	3	Vertical	333	1.01	-
5260MHz	Pass	PK	5.1346G	55.41	74.00	-18.59	2.72	3	Vertical	333	1.01	-
5260MHz	Pass	PK	5.2588G	115.74	Inf	-Inf	2.87	3	Vertical	333	1.01	-
5260MHz	Pass	PK	5.3794G	55.13	74.00	-18.87	3.01	3	Vertical	333	1.01	-
5260MHz	Pass	AV	5.1106G	42.01	54.00	-11.99	2.70	3	Horizontal	342	2.69	-
5260MHz	Pass	AV	5.2588G	103.68	Inf	-Inf	2.87	3	Horizontal	342	2.69	-
5260MHz	Pass	AV	5.3506G	41.73	54.00	-12.27	2.97	3	Horizontal	342	2.69	-
5260MHz	Pass	PK	5.131G	55.85	74.00	-18.15	2.72	3	Horizontal	342	2.69	-
5260MHz	Pass	PK	5.2588G	113.76	Inf	-Inf	2.87	3	Horizontal	342	2.69	-
5260MHz	Pass	PK	5.3776G	54.72	74.00	-19.28	3.00	3	Horizontal	342	2.69	-
5260MHz	Pass	AV	10.52006G	39.94	54.00	-14.06	12.98	3	Vertical	39	1.95	-
5260MHz	Pass	PK	10.51274G	53.29	74.00	-20.71	12.97	3	Vertical	39	1.95	-
5260MHz	Pass	AV	10.526G	39.89	54.00	-14.11	13.00	3	Horizontal	292	1.75	-
5260MHz	Pass	PK	10.52486G	54.68	74.00	-19.32	12.99	3	Horizontal	292	1.75	-
5300MHz	Pass	AV	5.3012G	105.17	Inf	-Inf	2.91	3	Vertical	341	1.01	-
5300MHz	Pass	AV	5.35G	44.46	54.00	-9.54	2.97	3	Vertical	341	1.01	-
5300MHz	Pass	PK	5.3012G	115.53	Inf	-Inf	2.91	3	Vertical	341	1.01	-
5300MHz	Pass	PK	5.3544G	57.67	74.00	-16.33	2.97	3	Vertical	341	1.01	-
5300MHz	Pass	AV	5.2988G	103.45	Inf	-Inf	2.91	3	Horizontal	353	2.52	-
5300MHz	Pass	AV	5.3504G	43.36	54.00	-10.64	2.97	3	Horizontal	353	2.52	-
5300MHz	Pass	PK	5.2992G	114.07	Inf	-Inf	2.91	3	Horizontal	353	2.52	-
5300MHz	Pass	PK	5.3532G	56.15	74.00	-17.85	2.97	3	Horizontal	353	2.52	-
5300MHz	Pass	AV	10.5853G	39.92	54.00	-14.08	13.12	3	Vertical	249	1.50	-
5300MHz	Pass	PK	10.60714G	54.22	74.00	-19.78	13.17	3	Vertical	249	1.50	-
5300MHz	Pass	AV	10.58968G	39.88	54.00	-14.12	13.14	3	Horizontal	241	2.98	-
5300MHz	Pass	PK	10.61152G	54.31	74.00	-19.69	13.19	3	Horizontal	241	2.98	-
5320MHz	Pass	AV	5.321G	104.88	Inf	-Inf	2.93	3	Vertical	340	1.04	-
5320MHz	Pass	AV	5.35G	45.12	54.00	-8.88	2.97	3	Vertical	340	1.04	-
5320MHz	Pass	PK	5.321G	116.08	Inf	-Inf	2.93	3	Vertical	340	1.04	-
5320MHz	Pass	PK	5.3664G	59.42	74.00	-14.58	2.99	3	Vertical	340	1.04	-
5320MHz	Pass	AV	5.319G	103.43	Inf	-Inf	2.93	3	Horizontal	353	2.77	-
5320MHz	Pass	AV	5.352G	44.56	54.00	-9.44	2.97	3	Horizontal	353	2.77	-
5320MHz	Pass	PK	5.3186G	113.99	Inf	-Inf	2.93	3	Horizontal	353	2.77	-
5320MHz	Pass	PK	5.36G	57.80	74.00	-16.20	2.98	3	Horizontal	353	2.77	-



RSE TX above 1GHz Result

Appendix E.2

Mode	Result	Type	Freq (Hz)	Level (dBuV/m)	Limit (dBuV/m)	Margin (dB)	Factor (dB)	Dist (m)	Condition	Azimuth (°)	Height (m)	Comments
5320MHz	Pass	AV	10.625G	39.66	54.00	-14.34	13.21	3	Vertical	265	1.42	-
5320MHz	Pass	PK	10.64912G	53.62	74.00	-20.38	13.27	3	Vertical	265	1.42	-
5320MHz	Pass	AV	10.62548G	39.69	54.00	-14.31	13.22	3	Horizontal	97	1.50	-
5320MHz	Pass	PK	10.65206G	53.30	74.00	-20.70	13.27	3	Horizontal	97	1.50	-
5500MHz	Pass	AV	5.46G	44.21	54.00	-9.79	3.10	3	Vertical	338	1.00	-
5500MHz	Pass	AV	5.501G	104.50	Inf	-Inf	3.14	3	Vertical	338	1.00	-
5500MHz	Pass	PK	5.4544G	57.19	74.00	-16.81	3.09	3	Vertical	338	1.00	-
5500MHz	Pass	PK	5.4642G	58.39	68.20	-9.81	3.10	3	Vertical	338	1.00	-
5500MHz	Pass	PK	5.4992G	115.03	Inf	-Inf	3.14	3	Vertical	338	1.00	-
5500MHz	Pass	AV	5.4598G	42.83	54.00	-11.17	3.10	3	Horizontal	342	2.76	-
5500MHz	Pass	AV	5.5008G	101.68	Inf	-Inf	3.14	3	Horizontal	342	2.76	-
5500MHz	Pass	PK	5.4586G	56.16	74.00	-17.84	3.10	3	Horizontal	342	2.76	-
5500MHz	Pass	PK	5.4678G	57.43	68.20	-10.77	3.11	3	Horizontal	342	2.76	-
5500MHz	Pass	PK	5.5014G	112.53	Inf	-Inf	3.14	3	Horizontal	342	2.76	-
5500MHz	Pass	AV	10.99706G	41.21	54.00	-12.79	14.03	3	Vertical	126	1.91	-
5500MHz	Pass	PK	11.00498G	54.37	74.00	-19.63	14.02	3	Vertical	126	1.91	-
5500MHz	Pass	AV	11.015G	40.71	54.00	-13.29	14.02	3	Horizontal	116	1.53	-
5500MHz	Pass	PK	10.99946G	54.41	74.00	-19.59	14.03	3	Horizontal	116	1.53	-
5580MHz	Pass	AV	5.4552G	41.80	54.00	-12.20	3.09	3	Vertical	351	1.02	-
5580MHz	Pass	AV	5.5788G	105.36	Inf	-Inf	3.30	3	Vertical	351	1.02	-
5580MHz	Pass	PK	5.4576G	54.62	74.00	-19.38	3.09	3	Vertical	351	1.02	-
5580MHz	Pass	PK	5.5788G	114.96	Inf	-Inf	3.30	3	Vertical	351	1.02	-
5580MHz	Pass	PK	5.7288G	54.67	68.20	-13.53	3.59	3	Vertical	351	1.02	-
5580MHz	Pass	AV	5.4594G	41.51	54.00	-12.49	3.10	3	Horizontal	354	2.97	-
5580MHz	Pass	AV	5.5812G	102.98	Inf	-Inf	3.30	3	Horizontal	354	2.97	-
5580MHz	Pass	PK	5.442G	54.63	74.00	-19.37	3.08	3	Horizontal	354	2.97	-
5580MHz	Pass	PK	5.5818G	112.80	Inf	-Inf	3.30	3	Horizontal	354	2.97	-
5580MHz	Pass	PK	5.7264G	54.93	68.20	-13.27	3.59	3	Horizontal	354	2.97	-
5580MHz	Pass	AV	11.1651G	41.59	54.00	-12.41	13.88	3	Vertical	90	1.49	-
5580MHz	Pass	PK	11.16126G	55.49	74.00	-18.51	13.88	3	Vertical	90	1.49	-
5580MHz	Pass	AV	11.14554G	41.13	54.00	-12.87	13.90	3	Horizontal	92	1.97	-
5580MHz	Pass	PK	11.15178G	54.76	74.00	-19.24	13.90	3	Horizontal	92	1.97	-
5700MHz	Pass	AV	5.7008G	105.90	Inf	-Inf	3.54	3	Vertical	19	1.05	-
5700MHz	Pass	PK	5.6992G	115.71	Inf	-Inf	3.54	3	Vertical	19	1.05	-
5700MHz	Pass	PK	5.7252G	61.97	68.20	-6.23	3.59	3	Vertical	19	1.05	-
5700MHz	Pass	AV	5.7028G	102.96	Inf	-Inf	3.54	3	Horizontal	19	2.71	-
5700MHz	Pass	PK	5.7036G	112.49	Inf	-Inf	3.55	3	Horizontal	19	2.71	-
5700MHz	Pass	PK	5.7252G	62.20	68.20	-6.00	3.59	3	Horizontal	19	2.71	-
5700MHz	Pass	AV	11.41416G	40.97	54.00	-13.03	13.65	3	Vertical	22	1.50	-
5700MHz	Pass	PK	11.38572G	53.51	74.00	-20.49	13.68	3	Vertical	22	1.50	-
5700MHz	Pass	AV	11.40294G	41.07	54.00	-12.93	13.66	3	Horizontal	87	1.33	-
5700MHz	Pass	PK	11.38758G	53.50	74.00	-20.50	13.68	3	Horizontal	87	1.33	-
5720MHz Straddle 5.47-5.725GHz	Pass	AV	5.4596G	42.03	54.00	-11.97	3.10	3	Vertical	9	1.03	-
5720MHz Straddle 5.47-5.725GHz	Pass	AV	5.7188G	105.57	Inf	-Inf	3.58	3	Vertical	9	1.03	-
5720MHz Straddle 5.47-5.725GHz	Pass	PK	5.468G	55.31	68.20	-12.89	3.11	3	Vertical	9	1.03	-
5720MHz Straddle 5.47-5.725GHz	Pass	PK	5.7188G	115.02	Inf	-Inf	3.58	3	Vertical	9	1.03	-
5720MHz Straddle 5.47-5.725GHz	Pass	PK	5.9504G	56.22	68.20	-11.98	4.03	3	Vertical	9	1.03	-
5720MHz Straddle 5.47-5.725GHz	Pass	AV	5.4596G	41.97	54.00	-12.03	3.10	3	Horizontal	15	2.84	-
5720MHz Straddle 5.47-5.725GHz	Pass	AV	5.7188G	103.53	Inf	-Inf	3.58	3	Horizontal	15	2.84	-



RSE TX above 1GHz Result

Appendix E.2

Mode	Result	Type	Freq (Hz)	Level (dBuV/m)	Limit (dBuV/m)	Margin (dB)	Factor (dB)	Dist (m)	Condition	Azimuth (°)	Height (m)	Comments
5720MHz Straddle 5.47-5.725GHz	Pass	PK	5.462G	54.59	68.20	-13.61	3.10	3	Horizontal	15	2.84	-
5720MHz Straddle 5.47-5.725GHz	Pass	PK	5.7188G	113.13	Inf	-Inf	3.58	3	Horizontal	15	2.84	-
5720MHz Straddle 5.47-5.725GHz	Pass	PK	5.8532G	55.87	68.20	-12.33	3.83	3	Horizontal	15	2.84	-
5720MHz Straddle 5.47-5.725GHz	Pass	AV	11.45008G	41.96	54.00	-12.04	13.62	3	Vertical	134	2.01	-
5720MHz Straddle 5.47-5.725GHz	Pass	PK	11.44432G	53.70	74.00	-20.30	13.62	3	Vertical	134	2.01	-
5720MHz Straddle 5.47-5.725GHz	Pass	AV	11.43916G	41.09	54.00	-12.91	13.63	3	Horizontal	313	1.95	-
5720MHz Straddle 5.47-5.725GHz	Pass	PK	11.45116G	53.54	74.00	-20.46	13.62	3	Horizontal	313	1.95	-
5745MHz	Pass	AV	5.7462G	105.32	Inf	-Inf	3.62	3	Vertical	22	1.02	-
5745MHz	Pass	PK	5.595G	55.77	68.20	-12.43	3.33	3	Vertical	22	1.02	-
5745MHz	Pass	PK	5.7462G	114.69	Inf	-Inf	3.62	3	Vertical	22	1.02	-
5745MHz	Pass	PK	5.9418G	56.15	68.20	-12.05	4.02	3	Vertical	22	1.02	-
5745MHz	Pass	AV	5.7462G	103.21	Inf	-Inf	3.62	3	Horizontal	24	2.66	-
5745MHz	Pass	PK	5.6154G	55.67	68.20	-12.53	3.37	3	Horizontal	24	2.66	-
5745MHz	Pass	PK	5.7462G	113.63	Inf	-Inf	3.62	3	Horizontal	24	2.66	-
5745MHz	Pass	PK	5.9814G	55.74	68.20	-12.46	4.09	3	Horizontal	24	2.66	-
5745MHz	Pass	AV	11.47776G	40.53	54.00	-13.47	13.59	3	Vertical	255	1.97	-
5745MHz	Pass	PK	11.49258G	54.22	74.00	-19.78	13.58	3	Vertical	255	1.97	-
5745MHz	Pass	AV	11.4864G	39.99	54.00	-14.01	13.59	3	Horizontal	221	2.26	-
5745MHz	Pass	PK	11.47644G	53.70	74.00	-20.30	13.59	3	Horizontal	221	2.26	-
5785MHz	Pass	AV	5.7838G	104.61	Inf	-Inf	3.70	3	Vertical	12	1.01	-
5785MHz	Pass	PK	5.563G	55.71	68.20	-12.49	3.26	3	Vertical	12	1.01	-
5785MHz	Pass	PK	5.7838G	115.22	Inf	-Inf	3.70	3	Vertical	12	1.01	-
5785MHz	Pass	PK	5.9338G	55.67	68.20	-12.53	4.00	3	Vertical	12	1.01	-
5785MHz	Pass	AV	5.7862G	102.69	Inf	-Inf	3.70	3	Horizontal	13	2.76	-
5785MHz	Pass	PK	5.6242G	55.65	68.20	-12.55	3.39	3	Horizontal	13	2.76	-
5785MHz	Pass	PK	5.7862G	112.74	Inf	-Inf	3.70	3	Horizontal	13	2.76	-
5785MHz	Pass	PK	5.9662G	55.63	68.20	-12.57	4.06	3	Horizontal	13	2.76	-
5785MHz	Pass	AV	11.58446G	41.08	54.00	-12.92	13.49	3	Vertical	191	1.84	-
5785MHz	Pass	PK	11.5802G	54.91	74.00	-19.09	13.50	3	Vertical	191	1.84	-
5785MHz	Pass	AV	11.56586G	41.01	54.00	-12.99	13.51	3	Horizontal	325	2.71	-
5785MHz	Pass	PK	11.56718G	53.81	74.00	-20.19	13.51	3	Horizontal	325	2.71	-
5825MHz	Pass	AV	5.8262G	104.21	Inf	-Inf	3.79	3	Vertical	19	1.00	-
5825MHz	Pass	PK	5.633G	55.59	68.20	-12.61	3.41	3	Vertical	19	1.00	-
5825MHz	Pass	PK	5.8262G	114.14	Inf	-Inf	3.79	3	Vertical	19	1.00	-
5825MHz	Pass	PK	5.927G	56.16	68.20	-12.04	3.99	3	Vertical	19	1.00	-
5825MHz	Pass	AV	5.8262G	102.41	Inf	-Inf	3.79	3	Horizontal	24	2.61	-
5825MHz	Pass	PK	5.5694G	55.62	68.20	-12.58	3.28	3	Horizontal	24	2.61	-
5825MHz	Pass	PK	5.8262G	111.65	Inf	-Inf	3.79	3	Horizontal	24	2.61	-
5825MHz	Pass	PK	5.9294G	55.41	68.20	-12.79	3.99	3	Horizontal	24	2.61	-
5825MHz	Pass	AV	11.665G	39.99	54.00	-14.01	13.42	3	Vertical	152	1.48	-
5825MHz	Pass	PK	11.65744G	54.03	74.00	-19.97	13.42	3	Vertical	152	1.48	-
5825MHz	Pass	AV	11.665G	40.00	54.00	-14.00	13.42	3	Horizontal	102	1.50	-
5825MHz	Pass	PK	11.65456G	53.61	74.00	-20.39	13.42	3	Horizontal	102	1.50	-
802.11ac VHT20_Nss2,(MCS10)_2TX	-	-	-	-	-	-	-	-	-	-	-	-
5180MHz	Pass	AV	5.1496G	47.24	54.00	-6.76	7.00	3	Vertical	357	1.11	-
5180MHz	Pass	AV	5.182G	102.20	Inf	-Inf	7.02	3	Vertical	357	1.11	-
5180MHz	Pass	PK	5.1498G	60.29	74.00	-13.71	7.00	3	Vertical	357	1.11	-
5180MHz	Pass	PK	5.175G	113.84	Inf	-Inf	7.01	3	Vertical	357	1.11	-
5180MHz	Pass	AV	5.1498G	47.30	54.00	-6.70	7.00	3	Horizontal	6	2.53	-



RSE TX above 1GHz Result

Appendix E.2

Mode	Result	Type	Freq (Hz)	Level (dBuV/m)	Limit (dBuV/m)	Margin (dB)	Factor (dB)	Dist (m)	Condition	Azimuth (°)	Height (m)	Comments
5180MHz	Pass	AV	5.182G	101.39	Inf	-Inf	7.02	3	Horizontal	6	2.53	-
5180MHz	Pass	PK	5.1498G	60.02	74.00	-13.98	7.00	3	Horizontal	6	2.53	-
5180MHz	Pass	PK	5.182G	112.92	Inf	-Inf	7.02	3	Horizontal	6	2.53	-
5180MHz	Pass	AV	10.37104G	39.53	54.00	-14.47	12.66	3	Vertical	354	1.59	-
5180MHz	Pass	PK	10.36756G	53.23	74.00	-20.77	12.65	3	Vertical	354	1.59	-
5180MHz	Pass	AV	10.36306G	39.54	54.00	-14.46	12.64	3	Horizontal	216	2.98	-
5180MHz	Pass	PK	10.3615G	53.39	74.00	-20.61	12.64	3	Horizontal	216	2.98	-
5200MHz	Pass	AV	5.15G	47.15	54.00	-6.85	3.68	3	Vertical	0	1.06	-
5200MHz	Pass	AV	5.1976G	105.77	Inf	-Inf	3.77	3	Vertical	0	1.06	-
5200MHz	Pass	PK	5.1496G	58.59	74.00	-15.41	3.68	3	Vertical	0	1.06	-
5200MHz	Pass	PK	5.2012G	115.85	Inf	-Inf	3.77	3	Vertical	0	1.06	-
5200MHz	Pass	AV	5.1496G	46.64	54.00	-7.36	3.68	3	Horizontal	25	2.80	-
5200MHz	Pass	AV	5.1992G	105.07	Inf	-Inf	3.77	3	Horizontal	25	2.80	-
5200MHz	Pass	PK	5.1488G	58.67	74.00	-15.33	3.68	3	Horizontal	25	2.80	-
5200MHz	Pass	PK	5.2012G	115.56	Inf	-Inf	3.77	3	Horizontal	25	2.80	-
5200MHz	Pass	AV	10.39706G	39.37	54.00	-14.63	12.72	3	Vertical	195	2.81	-
5200MHz	Pass	PK	10.40048G	53.31	74.00	-20.69	12.73	3	Vertical	195	2.81	-
5200MHz	Pass	AV	10.39868G	39.38	54.00	-14.62	12.73	3	Horizontal	177	2.13	-
5200MHz	Pass	PK	10.39556G	53.17	74.00	-20.83	12.71	3	Horizontal	177	2.13	-
5240MHz	Pass	AV	5.1452G	45.50	54.00	-8.50	3.67	3	Vertical	13	1.03	-
5240MHz	Pass	AV	5.2424G	106.73	Inf	-Inf	3.85	3	Vertical	13	1.03	-
5240MHz	Pass	AV	5.351G	45.95	54.00	-8.05	4.05	3	Vertical	13	1.03	-
5240MHz	Pass	PK	5.1314G	57.72	74.00	-16.28	3.65	3	Vertical	13	1.03	-
5240MHz	Pass	PK	5.2418G	116.15	Inf	-Inf	3.85	3	Vertical	13	1.03	-
5240MHz	Pass	PK	5.3822G	58.66	74.00	-15.34	4.11	3	Vertical	13	1.03	-
5240MHz	Pass	AV	5.1488G	45.33	54.00	-8.67	3.68	3	Horizontal	23	3.19	-
5240MHz	Pass	AV	5.2424G	105.37	Inf	-Inf	3.85	3	Horizontal	23	3.19	-
5240MHz	Pass	AV	5.3888G	45.72	54.00	-8.28	4.12	3	Horizontal	23	3.19	-
5240MHz	Pass	PK	5.1116G	56.86	74.00	-17.14	3.61	3	Horizontal	23	3.19	-
5240MHz	Pass	PK	5.2412G	115.22	Inf	-Inf	3.84	3	Horizontal	23	3.19	-
5240MHz	Pass	PK	5.3522G	57.70	74.00	-16.30	4.05	3	Horizontal	23	3.19	-
5240MHz	Pass	AV	10.49116G	39.62	54.00	-14.38	12.92	3	Vertical	159	1.89	-
5240MHz	Pass	PK	10.47268G	53.41	74.00	-20.59	12.88	3	Vertical	159	1.89	-
5240MHz	Pass	PK	10.47694G	54.15	74.00	-19.85	12.90	3	Horizontal	3	1.07	-
5240MHz	Pass	AV	10.47874G	39.62	54.00	-14.38	12.90	3	Horizontal	3	1.07	-
5260MHz	Pass	AV	5.1454G	45.30	54.00	-8.70	3.67	3	Vertical	359	1.01	-
5260MHz	Pass	AV	5.2624G	106.51	Inf	-Inf	3.89	3	Vertical	359	1.01	-
5260MHz	Pass	AV	5.362G	46.02	54.00	-7.98	4.07	3	Vertical	359	1.01	-
5260MHz	Pass	PK	5.1496G	57.62	74.00	-16.38	3.68	3	Vertical	359	1.01	-
5260MHz	Pass	PK	5.2618G	117.05	Inf	-Inf	3.89	3	Vertical	359	1.01	-
5260MHz	Pass	PK	5.359G	57.90	74.00	-16.10	4.07	3	Vertical	359	1.01	-
5260MHz	Pass	AV	5.1496G	45.13	54.00	-8.87	3.68	3	Horizontal	16	3.19	-
5260MHz	Pass	AV	5.2612G	105.07	Inf	-Inf	3.89	3	Horizontal	16	3.19	-
5260MHz	Pass	AV	5.4058G	45.70	54.00	-8.30	4.15	3	Horizontal	16	3.19	-
5260MHz	Pass	PK	5.1448G	57.15	74.00	-16.85	3.67	3	Horizontal	16	3.19	-
5260MHz	Pass	PK	5.2606G	115.36	Inf	-Inf	3.89	3	Horizontal	16	3.19	-
5260MHz	Pass	PK	5.3986G	57.47	74.00	-16.53	4.14	3	Horizontal	16	3.19	-
5260MHz	Pass	AV	10.50992G	41.02	54.00	-12.98	12.96	3	Vertical	111	1.32	-
5260MHz	Pass	PK	10.5134G	53.46	74.00	-20.54	12.97	3	Vertical	111	1.32	-



RSE TX above 1GHz Result

Appendix E.2

Mode	Result	Type	Freq (Hz)	Level (dBuV/m)	Limit (dBuV/m)	Margin (dB)	Factor (dB)	Dist (m)	Condition	Azimuth (°)	Height (m)	Comments
5260MHz	Pass	AV	10.52978G	40.47	54.00	-13.53	13.00	3	Horizontal	56	1.52	-
5260MHz	Pass	PK	10.53188G	53.36	74.00	-20.64	13.00	3	Horizontal	56	1.52	-
5300MHz	Pass	AV	5.302G	105.66	Inf	-Inf	3.96	3	Vertical	2	1.17	-
5300MHz	Pass	AV	5.35G	47.80	54.00	-6.20	4.05	3	Vertical	2	1.17	-
5300MHz	Pass	PK	5.3012G	110.89	Inf	-Inf	3.96	3	Vertical	42	1.17	-
5300MHz	Pass	PK	5.3728G	58.35	74.00	-15.65	4.09	3	Vertical	40	1.17	-
5300MHz	Pass	AV	5.2976G	104.50	Inf	-Inf	3.96	3	Horizontal	33	3.16	-
5300MHz	Pass	AV	5.3508G	46.50	54.00	-7.50	4.05	3	Horizontal	33	3.16	-
5300MHz	Pass	PK	5.3012G	114.03	Inf	-Inf	3.96	3	Horizontal	33	3.16	-
5300MHz	Pass	PK	5.3892G	58.14	74.00	-15.86	4.12	3	Horizontal	33	3.16	-
5300MHz	Pass	AV	10.58764G	41.65	54.00	-12.35	13.13	3	Vertical	176	1.57	-
5300MHz	Pass	PK	10.59616G	54.20	74.00	-19.80	13.14	3	Vertical	176	1.57	-
5300MHz	Pass	PK	10.59976G	54.17	74.00	-19.83	13.15	3	Horizontal	135	1.65	-
5300MHz	Pass	AV	10.59202G	41.07	54.00	-12.93	13.14	3	Horizontal	135	1.65	-
5320MHz	Pass	AV	5.3178G	105.35	Inf	-Inf	3.99	3	Vertical	1	1.01	-
5320MHz	Pass	AV	5.35G	49.95	54.00	-4.05	4.05	3	Vertical	1	1.01	-
5320MHz	Pass	PK	5.3206G	116.31	Inf	-Inf	3.99	3	Vertical	1	1.01	-
5320MHz	Pass	PK	5.3508G	62.25	74.00	-11.75	4.05	3	Vertical	1	1.01	-
5320MHz	Pass	AV	5.3188G	102.10	Inf	-Inf	3.99	3	Horizontal	57	2.31	-
5320MHz	Pass	AV	5.3502G	47.50	54.00	-6.50	4.05	3	Horizontal	57	2.31	-
5320MHz	Pass	PK	5.3212G	112.50	Inf	-Inf	4.00	3	Horizontal	57	2.31	-
5320MHz	Pass	PK	5.3512G	59.23	74.00	-14.77	4.05	3	Horizontal	57	2.31	-
5320MHz	Pass	AV	10.63496G	40.63	54.00	-13.37	13.24	3	Vertical	89	1.50	-
5320MHz	Pass	PK	10.64102G	53.99	74.00	-20.01	13.25	3	Vertical	89	1.50	-
5320MHz	Pass	AV	10.63376G	40.17	54.00	-13.83	13.24	3	Horizontal	101	1.62	-
5320MHz	Pass	PK	10.64828G	53.70	74.00	-20.30	13.26	3	Horizontal	101	1.62	-
5500MHz	Pass	AV	5.457G	47.47	54.00	-6.53	4.24	3	Vertical	23	1.01	-
5500MHz	Pass	AV	5.5022G	106.00	Inf	-Inf	4.32	3	Vertical	23	1.01	-
5500MHz	Pass	PK	5.4688G	62.61	68.20	-5.59	4.26	3	Vertical	23	1.01	-
5500MHz	Pass	PK	5.5012G	116.24	Inf	-Inf	4.32	3	Vertical	23	1.01	-
5500MHz	Pass	AV	5.453G	46.32	54.00	-7.68	4.23	3	Horizontal	29	2.79	-
5500MHz	Pass	AV	5.5022G	103.03	Inf	-Inf	4.32	3	Horizontal	29	2.79	-
5500MHz	Pass	PK	5.4686G	59.16	68.20	-9.04	4.26	3	Horizontal	29	2.79	-
5500MHz	Pass	PK	5.5026G	113.03	Inf	-Inf	4.32	3	Horizontal	29	2.79	-
5500MHz	Pass	AV	10.99502G	41.22	54.00	-12.78	14.02	3	Vertical	356	2.77	-
5500MHz	Pass	PK	10.99676G	54.60	74.00	-19.40	14.03	3	Vertical	356	2.77	-
5500MHz	Pass	AV	11.01494G	40.69	54.00	-13.31	14.02	3	Horizontal	289	1.88	-
5500MHz	Pass	PK	11.0012G	54.26	74.00	-19.74	14.03	3	Horizontal	289	1.88	-
5580MHz	Pass	AV	5.43G	45.52	54.00	-8.48	4.20	3	Vertical	19	1.02	-
5580MHz	Pass	AV	5.5824G	106.10	Inf	-Inf	4.45	3	Vertical	19	1.02	-
5580MHz	Pass	PK	5.4642G	57.44	68.20	-10.76	4.26	3	Vertical	19	1.02	-
5580MHz	Pass	PK	5.5818G	116.34	Inf	-Inf	4.44	3	Vertical	19	1.02	-
5580MHz	Pass	PK	5.727G	58.34	68.20	-9.86	4.67	3	Vertical	19	1.02	-
5580MHz	Pass	AV	5.43G	45.32	54.00	-8.68	4.20	3	Horizontal	52	2.17	-
5580MHz	Pass	AV	5.5824G	101.65	Inf	-Inf	4.45	3	Horizontal	52	2.17	-
5580MHz	Pass	PK	5.4678G	56.93	68.20	-11.27	4.26	3	Horizontal	52	2.17	-
5580MHz	Pass	PK	5.5824G	111.71	Inf	-Inf	4.45	3	Horizontal	52	2.17	-
5580MHz	Pass	PK	5.7294G	57.53	68.20	-10.67	4.67	3	Horizontal	52	2.17	-
5580MHz	Pass	AV	11.1645G	41.65	54.00	-12.35	13.88	3	Vertical	265	2.12	-



RSE TX above 1GHz Result

Appendix E.2

Mode	Result	Type	Freq (Hz)	Level (dBuV/m)	Limit (dBuV/m)	Margin (dB)	Factor (dB)	Dist (m)	Condition	Azimuth (°)	Height (m)	Comments
5580MHz	Pass	PK	11.1507G	55.43	74.00	-18.57	13.90	3	Vertical	265	2.12	-
5580MHz	Pass	AV	11.14578G	41.14	54.00	-12.86	13.90	3	Horizontal	151	1.73	-
5580MHz	Pass	PK	11.14986G	54.57	74.00	-19.43	13.90	3	Horizontal	151	1.73	-
5700MHz	Pass	AV	5.702G	105.69	Inf	-Inf	4.63	3	Vertical	21	1.04	-
5700MHz	Pass	PK	5.702G	115.56	Inf	-Inf	4.63	3	Vertical	21	1.04	-
5700MHz	Pass	PK	5.7252G	64.32	68.20	-3.88	4.67	3	Vertical	21	1.04	-
5700MHz	Pass	AV	5.702G	101.45	Inf	-Inf	4.63	3	Horizontal	49	2.32	-
5700MHz	Pass	PK	5.702G	111.55	Inf	-Inf	4.63	3	Horizontal	49	2.32	-
5700MHz	Pass	PK	5.7252G	62.00	68.20	-6.20	4.67	3	Horizontal	49	2.32	-
5700MHz	Pass	AV	11.4084G	40.96	54.00	-13.04	13.65	3	Vertical	319	1.31	-
5700MHz	Pass	PK	11.40084G	53.49	74.00	-20.51	13.66	3	Vertical	319	1.31	-
5700MHz	Pass	AV	11.40618G	40.33	54.00	-13.67	13.65	3	Horizontal	0	1.11	-
5700MHz	Pass	PK	11.39802G	54.99	74.00	-19.01	13.66	3	Horizontal	0	1.11	-
5720MHz Straddle 5.47-5.725GHz	Pass	AV	5.42G	45.38	54.00	-8.62	4.17	3	Vertical	19	1.00	-
5720MHz Straddle 5.47-5.725GHz	Pass	AV	5.7224G	106.08	Inf	-Inf	4.67	3	Vertical	19	1.00	-
5720MHz Straddle 5.47-5.725GHz	Pass	PK	5.4692G	56.37	68.20	-11.83	4.26	3	Vertical	19	1.00	-
5720MHz Straddle 5.47-5.725GHz	Pass	PK	5.7176G	115.19	Inf	-Inf	4.66	3	Vertical	19	1.00	-
5720MHz Straddle 5.47-5.725GHz	Pass	PK	5.852G	58.63	68.20	-9.57	4.87	3	Vertical	19	1.00	-
5720MHz Straddle 5.47-5.725GHz	Pass	AV	5.426G	45.34	54.00	-8.66	4.19	3	Horizontal	25	3.17	-
5720MHz Straddle 5.47-5.725GHz	Pass	AV	5.7224G	104.61	Inf	-Inf	4.67	3	Horizontal	25	3.17	-
5720MHz Straddle 5.47-5.725GHz	Pass	PK	5.4656G	56.67	68.20	-11.53	4.26	3	Horizontal	25	3.17	-
5720MHz Straddle 5.47-5.725GHz	Pass	PK	5.7212G	113.93	Inf	-Inf	4.67	3	Horizontal	25	3.17	-
5720MHz Straddle 5.47-5.725GHz	Pass	PK	5.876G	59.04	68.20	-9.16	4.92	3	Horizontal	25	3.17	-
5720MHz Straddle 5.47-5.725GHz	Pass	AV	11.43658G	40.47	54.00	-13.53	13.63	3	Vertical	344	1.76	-
5720MHz Straddle 5.47-5.725GHz	Pass	PK	11.42524G	53.78	74.00	-20.22	13.63	3	Vertical	344	1.76	-
5720MHz Straddle 5.47-5.725GHz	Pass	AV	11.44546G	40.00	54.00	-14.00	13.62	3	Horizontal	360	1.66	-
5720MHz Straddle 5.47-5.725GHz	Pass	PK	11.43916G	53.99	74.00	-20.01	13.63	3	Horizontal	360	1.66	-
5745MHz	Pass	AV	5.7474G	106.01	Inf	-Inf	4.71	3	Vertical	20	1.02	-
5745MHz	Pass	PK	5.4678G	58.27	68.20	-9.93	4.26	3	Vertical	20	1.02	-
5745MHz	Pass	PK	5.7474G	115.60	Inf	-Inf	4.71	3	Vertical	20	1.02	-
5745MHz	Pass	PK	5.9682G	58.32	68.20	-9.88	5.06	3	Vertical	20	1.02	-
5745MHz	Pass	AV	5.7438G	103.19	Inf	-Inf	4.70	3	Horizontal	17	3.15	-
5745MHz	Pass	PK	5.613G	58.44	68.20	-9.76	4.50	3	Horizontal	17	3.15	-
5745MHz	Pass	PK	5.7462G	113.28	Inf	-Inf	4.70	3	Horizontal	17	3.15	-
5745MHz	Pass	PK	5.937G	58.76	68.20	-9.44	5.00	3	Horizontal	17	3.15	-
5745MHz	Pass	AV	11.47854G	40.06	54.00	-13.94	13.59	3	Vertical	72	1.63	-
5745MHz	Pass	PK	11.49114G	54.33	74.00	-19.67	13.58	3	Vertical	72	1.63	-
5745MHz	Pass	AV	11.4792G	40.63	54.00	-13.37	13.59	3	Horizontal	144	2.22	-
5745MHz	Pass	PK	11.49168G	53.74	74.00	-20.26	13.58	3	Horizontal	144	2.22	-
5785MHz	Pass	AV	5.7838G	103.54	Inf	-Inf	4.76	3	Vertical	0	1.07	-
5785MHz	Pass	PK	5.569G	58.15	68.20	-10.05	4.43	3	Vertical	0	1.07	-
5785MHz	Pass	PK	5.7826G	113.14	Inf	-Inf	4.76	3	Vertical	0	1.07	-
5785MHz	Pass	PK	5.9662G	58.50	68.20	-9.70	5.05	3	Vertical	0	1.07	-
5785MHz	Pass	AV	5.7874G	103.68	Inf	-Inf	4.76	3	Horizontal	26	3.10	-
5785MHz	Pass	PK	5.587G	58.10	68.20	-10.10	4.44	3	Horizontal	26	3.10	-
5785MHz	Pass	PK	5.785G	113.68	Inf	-Inf	4.76	3	Horizontal	26	3.10	-
5785MHz	Pass	PK	5.9518G	58.65	68.20	-9.55	5.02	3	Horizontal	26	3.10	-
5785MHz	Pass	AV	11.58188G	41.06	54.00	-12.94	13.50	3	Vertical	342	1.50	-
5785MHz	Pass	PK	11.56736G	53.89	74.00	-20.11	13.51	3	Vertical	342	1.50	-



RSE TX above 1GHz Result

Appendix E.2

Mode	Result	Type	Freq (Hz)	Level (dBuV/m)	Limit (dBuV/m)	Margin (dB)	Factor (dB)	Dist (m)	Condition	Azimuth (°)	Height (m)	Comments
5785MHz	Pass	AV	11.585G	40.11	54.00	-13.89	13.49	3	Horizontal	201	1.55	-
5785MHz	Pass	PK	11.57558G	53.50	74.00	-20.50	13.50	3	Horizontal	201	1.55	-
5825MHz	Pass	AV	5.8274G	104.51	Inf	-Inf	4.83	3	Vertical	357	1.01	-
5825MHz	Pass	PK	5.6234G	57.79	68.20	-10.41	4.50	3	Vertical	357	1.01	-
5825MHz	Pass	PK	5.8238G	114.27	Inf	-Inf	4.82	3	Vertical	357	1.01	-
5825MHz	Pass	PK	5.9714G	58.33	68.20	-9.87	5.06	3	Vertical	357	1.01	-
5825MHz	Pass	AV	5.8274G	103.94	Inf	-Inf	4.83	3	Horizontal	22	3.19	-
5825MHz	Pass	PK	5.6282G	57.55	68.20	-10.65	4.51	3	Horizontal	22	3.19	-
5825MHz	Pass	PK	5.8262G	112.61	Inf	-Inf	4.83	3	Horizontal	22	3.19	-
5825MHz	Pass	PK	5.9366G	58.26	68.20	-9.94	5.00	3	Horizontal	22	3.19	-
5825MHz	Pass	AV	11.665G	41.03	54.00	-12.97	13.42	3	Vertical	292	1.96	-
5825MHz	Pass	PK	11.65324G	53.48	74.00	-20.52	13.43	3	Vertical	292	1.96	-
5825MHz	Pass	AV	11.64094G	40.54	54.00	-13.46	13.44	3	Horizontal	340	2.00	-
5825MHz	Pass	PK	11.6353G	53.52	74.00	-20.48	13.44	3	Horizontal	340	2.00	-
802.11ac VHT40_Nss1,(MCS0)_2TX	-	-	-	-	-	-	-	-	-	-	-	-
5190MHz	Pass	AV	5.1496G	53.17	54.00	-0.83	2.74	3	Vertical	7	1.04	-
5190MHz	Pass	AV	5.1872G	101.19	Inf	-Inf	2.78	3	Vertical	7	1.04	-
5190MHz	Pass	PK	5.15G	65.96	74.00	-8.04	2.74	3	Vertical	7	1.04	-
5190MHz	Pass	PK	5.188G	111.15	Inf	-Inf	2.78	3	Vertical	7	1.04	-
5190MHz	Pass	AV	5.15G	51.61	54.00	-2.39	2.74	3	Horizontal	31	2.75	-
5190MHz	Pass	AV	5.1948G	99.70	Inf	-Inf	2.80	3	Horizontal	31	2.75	-
5190MHz	Pass	PK	5.15G	65.55	74.00	-8.45	2.74	3	Horizontal	31	2.75	-
5190MHz	Pass	PK	5.1792G	110.13	Inf	-Inf	2.78	3	Horizontal	31	2.75	-
5190MHz	Pass	AV	10.3941G	40.37	54.00	-13.63	12.71	3	Vertical	351	1.50	-
5190MHz	Pass	PK	10.39074G	54.09	74.00	-19.91	12.70	3	Vertical	351	1.50	-
5190MHz	Pass	AV	10.395G	39.86	54.00	-14.14	12.71	3	Horizontal	346	1.30	-
5190MHz	Pass	PK	10.3935G	53.49	74.00	-20.51	12.71	3	Horizontal	346	1.30	-
5230MHz	Pass	AV	5.15G	44.01	54.00	-9.99	2.74	3	Vertical	3	1.08	-
5230MHz	Pass	AV	5.2272G	102.91	Inf	-Inf	2.83	3	Vertical	3	1.08	-
5230MHz	Pass	PK	5.15G	56.98	74.00	-17.02	2.74	3	Vertical	3	1.08	-
5230MHz	Pass	PK	5.226G	113.51	Inf	-Inf	2.83	3	Vertical	3	1.08	-
5230MHz	Pass	AV	5.1496G	43.54	54.00	-10.46	2.74	3	Horizontal	26	2.70	-
5230MHz	Pass	AV	5.2348G	102.10	Inf	-Inf	2.83	3	Horizontal	26	2.70	-
5230MHz	Pass	PK	5.15G	56.71	74.00	-17.29	2.74	3	Horizontal	26	2.70	-
5230MHz	Pass	PK	5.234G	111.87	Inf	-Inf	2.83	3	Horizontal	26	2.70	-
5230MHz	Pass	PK	10.45772G	53.71	74.00	-20.29	12.84	3	Vertical	10	1.50	-
5230MHz	Pass	AV	10.47422G	40.08	54.00	-13.92	12.88	3	Vertical	10	1.50	-
5230MHz	Pass	AV	10.4501G	40.60	54.00	-13.40	12.83	3	Horizontal	310	2.10	-
5230MHz	Pass	PK	10.45004G	54.15	74.00	-19.85	12.83	3	Horizontal	310	2.10	-
5270MHz	Pass	AV	5.2652G	103.07	Inf	-Inf	2.88	3	Vertical	5	1.04	-
5270MHz	Pass	AV	5.35G	44.36	54.00	-9.64	2.97	3	Vertical	5	1.04	-
5270MHz	Pass	PK	5.2828G	113.42	Inf	-Inf	2.89	3	Vertical	5	1.04	-
5270MHz	Pass	PK	5.3596G	56.70	74.00	-17.30	2.98	3	Vertical	5	1.04	-
5270MHz	Pass	AV	5.2748G	102.30	Inf	-Inf	2.88	3	Horizontal	26	2.92	-
5270MHz	Pass	AV	5.3512G	44.23	54.00	-9.77	2.97	3	Horizontal	26	2.92	-
5270MHz	Pass	PK	5.274G	112.15	Inf	-Inf	2.88	3	Horizontal	26	2.92	-
5270MHz	Pass	PK	5.3508G	57.31	74.00	-16.69	2.97	3	Horizontal	26	2.92	-
5270MHz	Pass	AV	10.52536G	40.07	54.00	-13.93	13.00	3	Vertical	202	1.50	-
5270MHz	Pass	PK	10.53232G	53.85	74.00	-20.15	13.01	3	Vertical	202	1.50	-



RSE TX above 1GHz Result

Appendix E.2

Mode	Result	Type	Freq (Hz)	Level (dBuV/m)	Limit (dBuV/m)	Margin (dB)	Factor (dB)	Dist (m)	Condition	Azimuth (°)	Height (m)	Comments
5270MHz	Pass	AV	10.54252G	40.62	54.00	-13.38	13.04	3	Horizontal	243	1.79	-
5270MHz	Pass	PK	10.52656G	54.45	74.00	-19.55	13.00	3	Horizontal	243	1.79	-
5310MHz	Pass	AV	5.3124G	101.31	Inf	-Inf	2.93	3	Vertical	21	1.03	-
5310MHz	Pass	AV	5.3504G	52.56	54.00	-1.44	2.97	3	Vertical	21	1.03	-
5310MHz	Pass	PK	5.3128G	110.72	Inf	-Inf	2.93	3	Vertical	21	1.03	-
5310MHz	Pass	PK	5.352G	66.34	74.00	-7.66	2.97	3	Vertical	21	1.03	-
5310MHz	Pass	AV	5.3128G	100.26	Inf	-Inf	2.93	3	Horizontal	27	2.90	-
5310MHz	Pass	AV	5.3512G	50.98	54.00	-3.02	2.97	3	Horizontal	27	2.90	-
5310MHz	Pass	PK	5.3148G	110.18	Inf	-Inf	2.93	3	Horizontal	27	2.90	-
5310MHz	Pass	PK	5.3536G	64.56	74.00	-9.44	2.97	3	Horizontal	27	2.90	-
5310MHz	Pass	AV	10.61214G	41.09	54.00	-12.91	13.19	3	Vertical	303	1.99	-
5310MHz	Pass	PK	10.62228G	53.85	74.00	-20.15	13.21	3	Vertical	303	1.99	-
5310MHz	Pass	AV	10.60506G	40.00	54.00	-14.00	13.17	3	Horizontal	107	2.11	-
5310MHz	Pass	PK	10.62336G	53.84	74.00	-20.16	13.21	3	Horizontal	107	2.11	-
5510MHz	Pass	AV	5.46G	48.77	54.00	-5.23	3.10	3	Vertical	15	1.01	-
5510MHz	Pass	AV	5.5052G	100.83	Inf	-Inf	3.15	3	Vertical	15	1.01	-
5510MHz	Pass	PK	5.4656G	67.27	68.20	-0.93	3.11	3	Vertical	15	1.01	-
5510MHz	Pass	PK	5.522G	111.84	Inf	-Inf	3.19	3	Vertical	15	1.01	-
5510MHz	Pass	AV	5.46G	46.03	54.00	-7.97	3.10	3	Horizontal	22	2.74	-
5510MHz	Pass	AV	5.5056G	98.41	Inf	-Inf	3.15	3	Horizontal	22	2.74	-
5510MHz	Pass	PK	5.4692G	62.71	68.20	-5.49	3.11	3	Horizontal	22	2.74	-
5510MHz	Pass	PK	5.5056G	109.16	Inf	-Inf	3.15	3	Horizontal	22	2.74	-
5510MHz	Pass	AV	11.02936G	40.88	54.00	-13.12	14.01	3	Vertical	351	1.81	-
5510MHz	Pass	PK	11.0254G	55.80	74.00	-18.20	14.00	3	Vertical	351	1.81	-
5510MHz	Pass	AV	11.0284G	40.89	54.00	-13.11	14.01	3	Horizontal	13	1.41	-
5510MHz	Pass	PK	11.02666G	55.01	74.00	-18.99	14.01	3	Horizontal	13	1.41	-
5550MHz	Pass	AV	5.4592G	43.17	54.00	-10.83	3.10	3	Vertical	25	1.01	-
5550MHz	Pass	AV	5.5536G	103.18	Inf	-Inf	3.25	3	Vertical	25	1.01	-
5550MHz	Pass	PK	5.4692G	56.41	68.20	-11.79	3.11	3	Vertical	25	1.01	-
5550MHz	Pass	PK	5.5536G	113.05	Inf	-Inf	3.25	3	Vertical	25	1.01	-
5550MHz	Pass	AV	5.4544G	42.54	54.00	-11.46	3.09	3	Horizontal	19	2.99	-
5550MHz	Pass	AV	5.5448G	100.27	Inf	-Inf	3.23	3	Horizontal	19	2.99	-
5550MHz	Pass	PK	5.468G	55.93	68.20	-12.27	3.11	3	Horizontal	19	2.99	-
5550MHz	Pass	PK	5.5452G	110.25	Inf	-Inf	3.23	3	Horizontal	19	2.99	-
5550MHz	Pass	AV	11.11206G	41.94	54.00	-12.06	13.92	3	Vertical	360	2.99	-
5550MHz	Pass	PK	11.11272G	54.71	74.00	-19.29	13.92	3	Vertical	360	2.99	-
5550MHz	Pass	AV	11.09646G	41.32	54.00	-12.68	13.93	3	Horizontal	26	2.44	-
5550MHz	Pass	PK	11.09928G	54.89	74.00	-19.11	13.94	3	Horizontal	26	2.44	-
5670MHz	Pass	AV	5.6724G	102.94	Inf	-Inf	3.48	3	Vertical	25	1.07	-
5670MHz	Pass	PK	5.6718G	112.14	Inf	-Inf	3.48	3	Vertical	25	1.07	-
5670MHz	Pass	PK	5.7336G	61.98	68.20	-6.22	3.60	3	Vertical	25	1.07	-
5670MHz	Pass	AV	5.673G	101.11	Inf	-Inf	3.48	3	Horizontal	27	2.75	-
5670MHz	Pass	PK	5.6748G	110.81	Inf	-Inf	3.48	3	Horizontal	27	2.75	-
5670MHz	Pass	PK	5.7318G	59.64	68.20	-8.56	3.59	3	Horizontal	27	2.75	-
5670MHz	Pass	AV	11.35014G	40.41	54.00	-13.59	13.71	3	Vertical	61	1.66	-
5670MHz	Pass	PK	11.33418G	54.01	74.00	-19.99	13.72	3	Vertical	61	1.66	-
5670MHz	Pass	AV	11.35314G	40.43	54.00	-13.57	13.71	3	Horizontal	299	1.85	-
5670MHz	Pass	PK	11.34234G	53.72	74.00	-20.28	13.72	3	Horizontal	299	1.85	-
5710MHz Straddle 5.47-5.725GHz	Pass	AV	5.4544G	43.11	54.00	-10.89	3.09	3	Vertical	26	1.02	-





RSE TX above 1GHz Result

Appendix E.2

Mode	Result	Type	Freq (Hz)	Level (dBuV/m)	Limit (dBuV/m)	Margin (dB)	Factor (dB)	Dist (m)	Condition	Azimuth (°)	Height (m)	Comments
5710MHz Straddle 5.47-5.725GHz	Pass	AV	5.7124G	102.61	Inf	-Inf	3.57	3	Vertical	26	1.02	-
5710MHz Straddle 5.47-5.725GHz	Pass	PK	5.46G	53.78	68.20	-14.42	3.10	3	Vertical	26	1.02	-
5710MHz Straddle 5.47-5.725GHz	Pass	PK	5.7124G	112.20	Inf	-Inf	3.57	3	Vertical	26	1.02	-
5710MHz Straddle 5.47-5.725GHz	Pass	PK	5.932G	58.79	68.20	-9.41	3.99	3	Vertical	26	1.02	-
5710MHz Straddle 5.47-5.725GHz	Pass	AV	5.4568G	42.56	54.00	-11.44	3.09	3	Horizontal	28	2.81	-
5710MHz Straddle 5.47-5.725GHz	Pass	AV	5.7124G	100.49	Inf	-Inf	3.57	3	Horizontal	28	2.81	-
5710MHz Straddle 5.47-5.725GHz	Pass	PK	5.4652G	54.43	68.20	-13.77	3.11	3	Horizontal	28	2.81	-
5710MHz Straddle 5.47-5.725GHz	Pass	PK	5.7124G	109.81	Inf	-Inf	3.57	3	Horizontal	28	2.81	-
5710MHz Straddle 5.47-5.725GHz	Pass	PK	5.932G	57.91	68.20	-10.29	3.99	3	Horizontal	28	2.81	-
5710MHz Straddle 5.47-5.725GHz	Pass	AV	11.41058G	41.83	54.00	-12.17	13.65	3	Vertical	31	2.09	-
5710MHz Straddle 5.47-5.725GHz	Pass	PK	11.42012G	53.96	74.00	-20.04	13.64	3	Vertical	31	2.09	-
5710MHz Straddle 5.47-5.725GHz	Pass	AV	11.40662G	40.97	54.00	-13.03	13.65	3	Horizontal	349	2.13	-
5710MHz Straddle 5.47-5.725GHz	Pass	PK	11.4242G	54.00	74.00	-20.00	13.64	3	Horizontal	349	2.13	-
5755MHz	Pass	AV	5.7574G	101.97	Inf	-Inf	3.65	3	Vertical	23	1.03	-
5755MHz	Pass	PK	5.6146G	56.00	68.20	-12.20	3.37	3	Vertical	23	1.03	-
5755MHz	Pass	PK	5.7574G	111.80	Inf	-Inf	3.65	3	Vertical	23	1.03	-
5755MHz	Pass	PK	5.977G	58.57	68.20	-9.63	4.08	3	Vertical	23	1.03	-
5755MHz	Pass	AV	5.7574G	100.28	Inf	-Inf	3.65	3	Horizontal	27	2.54	-
5755MHz	Pass	PK	5.6026G	55.72	68.20	-12.48	3.34	3	Horizontal	27	2.54	-
5755MHz	Pass	PK	5.7574G	110.43	Inf	-Inf	3.65	3	Horizontal	27	2.54	-
5755MHz	Pass	PK	5.977G	56.64	68.20	-11.56	4.08	3	Horizontal	27	2.54	-
5755MHz	Pass	AV	11.49566G	40.48	54.00	-13.52	13.58	3	Vertical	136	1.50	-
5755MHz	Pass	PK	11.52254G	53.74	74.00	-20.26	13.55	3	Vertical	136	1.50	-
5755MHz	Pass	AV	11.4959G	39.93	54.00	-14.07	13.58	3	Horizontal	144	1.93	-
5755MHz	Pass	PK	11.50994G	53.59	74.00	-20.41	13.56	3	Horizontal	144	1.93	-
5795MHz	Pass	AV	5.7974G	101.60	Inf	-Inf	3.73	3	Vertical	24	1.02	-
5795MHz	Pass	PK	5.5394G	55.34	68.20	-12.86	3.23	3	Vertical	24	1.02	-
5795MHz	Pass	PK	5.7962G	111.16	Inf	-Inf	3.72	3	Vertical	24	1.02	-
5795MHz	Pass	PK	5.9414G	56.32	68.20	-11.88	4.02	3	Vertical	24	1.02	-
5795MHz	Pass	AV	5.7986G	100.32	Inf	-Inf	3.73	3	Horizontal	24	2.66	-
5795MHz	Pass	PK	5.645G	55.39	68.20	-12.81	3.43	3	Horizontal	24	2.66	-
5795MHz	Pass	PK	5.7986G	109.70	Inf	-Inf	3.73	3	Horizontal	24	2.66	-
5795MHz	Pass	PK	5.957G	55.65	68.20	-12.55	4.04	3	Horizontal	24	2.66	-
5795MHz	Pass	AV	11.58748G	40.01	54.00	-13.99	13.49	3	Vertical	45	2.45	-
5795MHz	Pass	PK	11.59276G	53.93	74.00	-20.07	13.49	3	Vertical	45	2.45	-
5795MHz	Pass	AV	11.58568G	40.62	54.00	-13.38	13.49	3	Horizontal	355	2.35	-
5795MHz	Pass	PK	11.5759G	53.85	74.00	-20.15	13.50	3	Horizontal	355	2.35	-
5190MHz	Pass	AV	5.15G	52.63	54.00	-1.37	2.74	3	Vertical	6	1.02	-
5190MHz	Pass	AV	5.1864G	100.02	Inf	-Inf	2.78	3	Vertical	6	1.02	-
5190MHz	Pass	PK	5.1472G	66.20	74.00	-7.80	2.74	3	Vertical	6	1.02	-
5190MHz	Pass	PK	5.1868G	110.82	Inf	-Inf	2.78	3	Vertical	6	1.02	-
5190MHz	Pass	AV	5.15G	53.16	54.00	-0.84	2.74	3	Horizontal	26	2.86	-
5190MHz	Pass	AV	5.1936G	99.15	Inf	-Inf	2.80	3	Horizontal	26	2.86	-
5190MHz	Pass	PK	5.15G	67.88	74.00	-6.12	2.74	3	Horizontal	26	2.86	-
5190MHz	Pass	PK	5.1936G	110.76	Inf	-Inf	2.80	3	Horizontal	26	2.86	-
5190MHz	Pass	AV	10.45616G	41.16	54.00	-12.84	12.84	3	Vertical	255	1.54	-
5190MHz	Pass	PK	10.46648G	54.10	74.00	-19.90	12.87	3	Vertical	255	1.54	-
5190MHz	Pass	AV	10.46354G	40.63	54.00	-13.37	12.86	3	Horizontal	50	2.05	-
5190MHz	Pass	PK	10.4456G	53.85	74.00	-20.15	12.82	3	Horizontal	50	2.05	-



RSE TX above 1GHz Result

Appendix E.2

Mode	Result	Type	Freq (Hz)	Level (dBuV/m)	Limit (dBuV/m)	Margin (dB)	Factor (dB)	Dist (m)	Condition	Azimuth (°)	Height (m)	Comments
5230MHz	Pass	AV	5.1492G	43.73	54.00	-10.27	2.74	3	Vertical	2	1.03	-
5230MHz	Pass	AV	5.2332G	101.41	Inf	-Inf	2.83	3	Vertical	2	1.03	-
5230MHz	Pass	PK	5.148G	55.89	74.00	-18.11	2.74	3	Vertical	2	1.03	-
5230MHz	Pass	PK	5.2328G	112.27	Inf	-Inf	2.83	3	Vertical	2	1.03	-
5230MHz	Pass	AV	5.148G	43.17	54.00	-10.83	2.74	3	Horizontal	26	2.99	-
5230MHz	Pass	AV	5.2324G	99.57	Inf	-Inf	2.83	3	Horizontal	26	2.99	-
5230MHz	Pass	PK	5.1488G	56.40	74.00	-17.60	2.74	3	Horizontal	26	2.99	-
5230MHz	Pass	PK	5.2316G	111.37	Inf	-Inf	2.83	3	Horizontal	26	2.99	-
5230MHz	Pass	AV	10.4711G	40.74	54.00	-13.26	12.88	3	Vertical	6	1.41	-
5230MHz	Pass	PK	10.44926G	54.61	74.00	-19.39	12.83	3	Vertical	6	1.41	-
5230MHz	Pass	AV	10.47446G	40.08	54.00	-13.92	12.88	3	Horizontal	231	1.70	-
5230MHz	Pass	PK	10.45532G	53.48	74.00	-20.52	12.84	3	Horizontal	231	1.70	-
5270MHz	Pass	AV	5.2664G	101.68	Inf	-Inf	2.88	3	Vertical	6	1.01	-
5270MHz	Pass	AV	5.3504G	44.84	54.00	-9.16	2.97	3	Vertical	6	1.01	-
5270MHz	Pass	PK	5.2748G	112.43	Inf	-Inf	2.88	3	Vertical	6	1.01	-
5270MHz	Pass	PK	5.3596G	57.41	74.00	-16.59	2.98	3	Vertical	6	1.01	-
5270MHz	Pass	AV	5.2732G	100.68	Inf	-Inf	2.88	3	Horizontal	23	2.94	-
5270MHz	Pass	AV	5.35G	43.54	54.00	-10.46	2.97	3	Horizontal	23	2.94	-
5270MHz	Pass	PK	5.2728G	111.58	Inf	-Inf	2.88	3	Horizontal	23	2.94	-
5270MHz	Pass	PK	5.3508G	55.88	74.00	-18.12	2.97	3	Horizontal	23	2.94	-
5270MHz	Pass	AV	10.5526G	41.01	54.00	-12.99	13.05	3	Vertical	18	2.47	-
5270MHz	Pass	PK	10.54552G	54.15	74.00	-19.85	13.04	3	Vertical	18	2.47	-
5270MHz	Pass	AV	10.53064G	40.60	54.00	-13.40	13.00	3	Horizontal	232	1.21	-
5270MHz	Pass	PK	10.5313G	54.38	74.00	-19.62	13.00	3	Horizontal	232	1.21	-
5310MHz	Pass	AV	5.3068G	99.65	Inf	-Inf	2.91	3	Vertical	17	1.02	-
5310MHz	Pass	AV	5.35G	51.72	54.00	-2.28	2.97	3	Vertical	17	1.02	-
5310MHz	Pass	PK	5.3072G	110.18	Inf	-Inf	2.92	3	Vertical	17	1.02	-
5310MHz	Pass	PK	5.3512G	64.75	74.00	-9.25	2.97	3	Vertical	17	1.02	-
5310MHz	Pass	AV	5.3064G	98.60	Inf	-Inf	2.91	3	Horizontal	25	2.90	-
5310MHz	Pass	AV	5.3504G	50.68	54.00	-3.32	2.97	3	Horizontal	25	2.90	-
5310MHz	Pass	PK	5.3124G	109.53	Inf	-Inf	2.93	3	Horizontal	25	2.90	-
5310MHz	Pass	PK	5.3508G	62.84	74.00	-11.16	2.97	3	Horizontal	25	2.90	-
5310MHz	Pass	AV	10.60878G	41.78	54.00	-12.22	13.18	3	Vertical	0	1.49	-
5310MHz	Pass	PK	10.61508G	54.62	74.00	-19.38	13.19	3	Vertical	0	1.49	-
5310MHz	Pass	AV	10.60956G	40.57	54.00	-13.43	13.18	3	Horizontal	358	2.61	-
5310MHz	Pass	PK	10.62342G	54.03	74.00	-19.97	13.21	3	Horizontal	358	2.61	-
5510MHz	Pass	AV	5.46G	48.24	54.00	-5.76	3.10	3	Vertical	12	1.07	-
5510MHz	Pass	AV	5.5132G	99.26	Inf	-Inf	3.17	3	Vertical	12	1.07	-
5510MHz	Pass	PK	5.4696G	67.29	68.20	-0.91	3.11	3	Vertical	12	1.07	-
5510MHz	Pass	PK	5.5128G	111.29	Inf	-Inf	3.17	3	Vertical	12	1.07	-
5510MHz	Pass	AV	5.46G	46.22	54.00	-7.78	3.10	3	Horizontal	21	2.60	-
5510MHz	Pass	AV	5.518G	96.24	Inf	-Inf	3.18	3	Horizontal	21	2.60	-
5510MHz	Pass	PK	5.4696G	63.70	68.20	-4.50	3.11	3	Horizontal	21	2.60	-
5510MHz	Pass	PK	5.5144G	107.79	Inf	-Inf	3.17	3	Horizontal	21	2.60	-
5510MHz	Pass	AV	11.0161G	41.83	54.00	-12.17	14.02	3	Vertical	1	2.57	-
5510MHz	Pass	PK	11.02702G	54.78	74.00	-19.22	14.01	3	Vertical	1	2.57	-
5510MHz	Pass	AV	11.0344G	40.91	54.00	-13.09	14.00	3	Horizontal	69	1.71	-
5510MHz	Pass	PK	11.00746G	54.96	74.00	-19.04	14.02	3	Horizontal	69	1.71	-
5550MHz	Pass	AV	5.4592G	46.98	54.00	-7.02	4.25	3	Vertical	8	1.04	-



RSE TX above 1GHz Result

Appendix E.2

Mode	Result	Type	Freq (Hz)	Level (dBuV/m)	Limit (dBuV/m)	Margin (dB)	Factor (dB)	Dist (m)	Condition	Azimuth (°)	Height (m)	Comments
5550MHz	Pass	AV	5.5472G	102.66	Inf	-Inf	4.40	3	Vertical	8	1.04	-
5550MHz	Pass	PK	5.4696G	59.94	68.20	-8.26	4.26	3	Vertical	8	1.04	-
5550MHz	Pass	PK	5.5472G	112.87	Inf	-Inf	4.40	3	Vertical	8	1.04	-
5550MHz	Pass	AV	5.4532G	46.13	54.00	-7.87	4.23	3	Horizontal	41	2.51	-
5550MHz	Pass	AV	5.5476G	99.01	Inf	-Inf	4.40	3	Horizontal	41	2.51	-
5550MHz	Pass	PK	5.4652G	58.08	68.20	-10.12	4.26	3	Horizontal	41	2.51	-
5550MHz	Pass	PK	5.5524G	109.43	Inf	-Inf	4.39	3	Horizontal	41	2.51	-
5550MHz	Pass	AV	11.09886G	41.33	54.00	-12.67	13.94	3	Vertical	115	1.47	-
5550MHz	Pass	PK	11.0883G	54.36	74.00	-19.64	13.95	3	Vertical	115	1.47	-
5550MHz	Pass	AV	11.11494G	40.86	54.00	-13.14	13.93	3	Horizontal	206	2.27	-
5550MHz	Pass	PK	11.10654G	54.89	74.00	-19.11	13.93	3	Horizontal	206	2.27	-
5670MHz	Pass	AV	5.6724G	102.93	Inf	-Inf	4.59	3	Vertical	33	1.02	-
5670MHz	Pass	PK	5.6736G	113.23	Inf	-Inf	4.59	3	Vertical	33	1.02	-
5670MHz	Pass	PK	5.7276G	64.72	68.20	-3.48	4.67	3	Vertical	33	1.02	-
5670MHz	Pass	AV	5.6724G	98.66	Inf	-Inf	4.59	3	Horizontal	39	2.35	-
5670MHz	Pass	PK	5.6658G	108.81	Inf	-Inf	4.57	3	Horizontal	39	2.35	-
5670MHz	Pass	PK	5.7276G	61.47	68.20	-6.73	4.67	3	Horizontal	39	2.35	-
5670MHz	Pass	AV	11.35128G	40.47	54.00	-13.53	13.71	3	Vertical	77	1.19	-
5670MHz	Pass	PK	11.33718G	53.82	74.00	-20.18	13.72	3	Vertical	77	1.19	-
5670MHz	Pass	AV	11.355G	40.03	54.00	-13.97	13.70	3	Horizontal	224	1.50	-
5670MHz	Pass	PK	11.32752G	53.82	74.00	-20.18	13.73	3	Horizontal	224	1.50	-
5710MHz Straddle 5.47-5.725GHz	Pass	AV	5.452G	46.31	54.00	-7.69	4.23	3	Vertical	19	1.01	-
5710MHz Straddle 5.47-5.725GHz	Pass	AV	5.7124G	102.99	Inf	-Inf	4.65	3	Vertical	19	1.01	-
5710MHz Straddle 5.47-5.725GHz	Pass	PK	5.46G	57.47	68.20	-10.73	4.25	3	Vertical	19	1.01	-
5710MHz Straddle 5.47-5.725GHz	Pass	PK	5.7088G	112.76	Inf	-Inf	4.64	3	Vertical	19	1.01	-
5710MHz Straddle 5.47-5.725GHz	Pass	PK	5.9356G	61.59	68.20	-6.61	5.00	3	Vertical	19	1.01	-
5710MHz Straddle 5.47-5.725GHz	Pass	AV	5.4544G	45.76	54.00	-8.24	4.24	3	Horizontal	51	2.30	-
5710MHz Straddle 5.47-5.725GHz	Pass	AV	5.7076G	98.36	Inf	-Inf	4.64	3	Horizontal	51	2.30	-
5710MHz Straddle 5.47-5.725GHz	Pass	PK	5.4652G	56.72	68.20	-11.48	4.26	3	Horizontal	51	2.30	-
5710MHz Straddle 5.47-5.725GHz	Pass	PK	5.7052G	107.93	Inf	-Inf	4.64	3	Horizontal	51	2.30	-
5710MHz Straddle 5.47-5.725GHz	Pass	PK	5.9332G	59.56	68.20	-8.64	5.00	3	Horizontal	51	2.30	-
5710MHz Straddle 5.47-5.725GHz	Pass	AV	11.435G	40.59	54.00	-13.41	13.63	3	Vertical	333	2.39	-
5710MHz Straddle 5.47-5.725GHz	Pass	PK	11.43236G	54.43	74.00	-19.57	13.63	3	Vertical	333	2.39	-
5710MHz Straddle 5.47-5.725GHz	Pass	AV	11.43494G	40.04	54.00	-13.96	13.63	3	Horizontal	43	1.01	-
5710MHz Straddle 5.47-5.725GHz	Pass	PK	11.417G	54.02	74.00	-19.98	13.65	3	Horizontal	43	1.01	-
5755MHz	Pass	AV	5.7526G	101.54	Inf	-Inf	4.71	3	Vertical	20	1.01	-
5755MHz	Pass	PK	5.605G	59.72	68.20	-8.48	4.48	3	Vertical	20	1.01	-
5755MHz	Pass	PK	5.7586G	111.99	Inf	-Inf	4.72	3	Vertical	20	1.01	-
5755MHz	Pass	PK	5.9794G	59.80	68.20	-8.40	5.07	3	Vertical	20	1.01	-
5755MHz	Pass	AV	5.7574G	99.09	Inf	-Inf	4.72	3	Horizontal	32	2.25	-
5755MHz	Pass	PK	5.5258G	58.04	68.20	-10.16	4.36	3	Horizontal	32	2.25	-
5755MHz	Pass	PK	5.7598G	108.76	Inf	-Inf	4.72	3	Horizontal	32	2.25	-
5755MHz	Pass	PK	5.9842G	59.29	68.20	-8.91	5.07	3	Horizontal	32	2.25	-
5755MHz	Pass	AV	11.50136G	40.87	54.00	-13.13	13.57	3	Vertical	310	1.80	-
5755MHz	Pass	PK	11.49662G	53.89	74.00	-20.11	13.57	3	Vertical	310	1.80	-
5755MHz	Pass	AV	11.495G	39.95	54.00	-14.05	13.58	3	Horizontal	358	2.92	-
5755MHz	Pass	PK	11.52398G	53.76	74.00	-20.24	13.55	3	Horizontal	358	2.92	-
5795MHz	Pass	AV	5.7926G	101.83	Inf	-Inf	4.78	3	Vertical	21	1.01	-
5795MHz	Pass	PK	5.5682G	58.71	68.20	-9.49	4.43	3	Vertical	21	1.01	-



RSE TX above 1GHz Result

Appendix E.2

Mode	Result	Type	Freq (Hz)	Level (dBuV/m)	Limit (dBuV/m)	Margin (dB)	Factor (dB)	Dist (m)	Condition	Azimuth (°)	Height (m)	Comments
5795MHz	Pass	PK	5.7926G	111.61	Inf	-Inf	4.78	3	Vertical	21	1.01	-
5795MHz	Pass	PK	5.9498G	59.00	68.20	-9.20	5.03	3	Vertical	21	1.01	-
5795MHz	Pass	AV	5.7926G	99.37	Inf	-Inf	4.78	3	Horizontal	29	2.81	-
5795MHz	Pass	PK	5.6018G	58.09	68.20	-10.11	4.47	3	Horizontal	29	2.81	-
5795MHz	Pass	PK	5.7998G	109.27	Inf	-Inf	4.79	3	Horizontal	29	2.81	-
5795MHz	Pass	PK	5.939G	59.51	68.20	-8.69	5.01	3	Horizontal	29	2.81	-
5795MHz	Pass	AV	11.58868G	40.53	54.00	-13.47	13.50	3	Vertical	264	2.11	-
5795MHz	Pass	PK	11.58442G	54.19	74.00	-19.81	13.49	3	Vertical	264	2.11	-
5795MHz	Pass	AV	11.58508G	39.97	54.00	-14.03	13.49	3	Horizontal	0	1.34	-
5795MHz	Pass	PK	11.58046G	53.50	74.00	-20.50	13.50	3	Horizontal	0	1.34	-
802.11ac VHT80_Nss1,(MCS0)_2TX	-	-	-	-	-	-	-	-	-	-	-	-
5210MHz	Pass	AV	5.136G	52.65	54.00	-1.35	2.73	3	Vertical	8	1.01	-
5210MHz	Pass	AV	5.212G	96.93	Inf	-Inf	2.82	3	Vertical	8	1.01	-
5210MHz	Pass	AV	5.35G	42.59	54.00	-11.41	2.97	3	Vertical	8	1.01	-
5210MHz	Pass	PK	5.134G	66.70	74.00	-7.30	2.72	3	Vertical	8	1.01	-
5210MHz	Pass	PK	5.233G	108.33	Inf	-Inf	2.83	3	Vertical	8	1.01	-
5210MHz	Pass	PK	5.458G	55.24	74.00	-18.76	3.09	3	Vertical	8	1.01	-
5210MHz	Pass	AV	5.149G	53.07	54.00	-0.93	2.74	3	Horizontal	24	2.71	-
5210MHz	Pass	AV	5.209G	96.02	Inf	-Inf	2.82	3	Horizontal	24	2.71	-
5210MHz	Pass	AV	5.364G	42.26	54.00	-11.74	2.98	3	Horizontal	24	2.71	-
5210MHz	Pass	PK	5.149G	66.67	74.00	-7.33	2.74	3	Horizontal	24	2.71	-
5210MHz	Pass	PK	5.228G	106.87	Inf	-Inf	2.83	3	Horizontal	24	2.71	-
5210MHz	Pass	PK	5.371G	56.12	74.00	-17.88	2.99	3	Horizontal	24	2.71	-
5210MHz	Pass	AV	10.41974G	42.35	54.00	-11.65	15.95	3	Vertical	92	1.15	-
5210MHz	Pass	PK	10.41974G	56.23	74.00	-17.77	15.95	3	Vertical	92	1.15	-
5210MHz	Pass	AV	10.42046G	42.19	54.00	-11.81	15.95	3	Horizontal	198	1.23	-
5210MHz	Pass	PK	10.41744G	56.32	74.00	-17.68	15.93	3	Horizontal	198	1.23	-
5290MHz	Pass	AV	5.059G	42.53	54.00	-11.47	2.64	3	Vertical	12	1.00	-
5290MHz	Pass	AV	5.289G	97.35	Inf	-Inf	2.89	3	Vertical	12	1.00	-
5290MHz	Pass	AV	5.35G	52.33	54.00	-1.67	2.97	3	Vertical	12	1.00	-
5290MHz	Pass	PK	5.096G	55.52	74.00	-18.48	2.68	3	Vertical	12	1.00	-
5290MHz	Pass	PK	5.309G	107.69	Inf	-Inf	2.93	3	Vertical	12	1.00	-
5290MHz	Pass	PK	5.35G	64.20	74.00	-9.80	2.97	3	Vertical	12	1.00	-
5290MHz	Pass	AV	5.149G	42.63	54.00	-11.37	2.74	3	Horizontal	25	2.94	-
5290MHz	Pass	AV	5.286G	95.70	Inf	-Inf	2.89	3	Horizontal	25	2.94	-
5290MHz	Pass	AV	5.363G	49.83	54.00	-4.17	2.98	3	Horizontal	25	2.94	-
5290MHz	Pass	PK	5.093G	55.72	74.00	-18.28	2.68	3	Horizontal	25	2.94	-
5290MHz	Pass	PK	5.284G	105.89	Inf	-Inf	2.89	3	Horizontal	25	2.94	-
5290MHz	Pass	PK	5.366G	62.54	74.00	-11.46	2.99	3	Horizontal	25	2.94	-
5290MHz	Pass	AV	10.57972G	41.70	54.00	-12.30	16.21	3	Vertical	320	2.01	-
5290MHz	Pass	PK	10.58104G	56.19	74.00	-17.81	16.21	3	Vertical	320	2.01	-
5290MHz	Pass	AV	10.57704G	41.71	54.00	-12.29	16.21	3	Horizontal	339	1.92	-
5290MHz	Pass	PK	10.5781G	56.04	74.00	-17.96	16.21	3	Horizontal	339	1.92	-
5530MHz	Pass	AV	5.455G	51.94	54.00	-2.06	3.09	3	Vertical	15	1.01	-
5530MHz	Pass	AV	5.532G	97.15	Inf	-Inf	3.20	3	Vertical	15	1.01	-
5530MHz	Pass	PK	5.469G	65.31	68.20	-2.89	3.11	3	Vertical	15	1.01	-
5530MHz	Pass	PK	5.534G	107.66	Inf	-Inf	3.21	3	Vertical	15	1.01	-
5530MHz	Pass	PK	5.749G	55.74	68.20	-12.46	3.63	3	Vertical	15	1.01	-
5530MHz	Pass	AV	5.453G	51.12	54.00	-2.88	3.09	3	Horizontal	22	2.86	-



RSE TX above 1GHz Result

Appendix E.2

Mode	Result	Type	Freq (Hz)	Level (dBuV/m)	Limit (dBuV/m)	Margin (dB)	Factor (dB)	Dist (m)	Condition	Azimuth (°)	Height (m)	Comments
5530MHz	Pass	AV	5.532G	95.12	Inf	-Inf	3.20	3	Horizontal	22	2.86	-
5530MHz	Pass	PK	5.469G	64.57	68.20	-3.63	3.11	3	Horizontal	22	2.86	-
5530MHz	Pass	PK	5.533G	105.53	Inf	-Inf	3.21	3	Horizontal	22	2.86	-
5530MHz	Pass	PK	5.757G	55.98	68.20	-12.22	3.65	3	Horizontal	22	2.86	-
5530MHz	Pass	AV	11.06102G	41.55	54.00	-12.45	16.87	3	Vertical	303	1.27	-
5530MHz	Pass	PK	11.06092G	55.13	74.00	-18.87	16.87	3	Vertical	303	1.27	-
5530MHz	Pass	AV	11.06092G	41.49	54.00	-12.51	16.87	3	Horizontal	16	1.85	-
5530MHz	Pass	PK	11.05524G	55.44	74.00	-18.56	16.87	3	Horizontal	16	1.85	-
5610MHz	Pass	AV	5.46G	41.99	54.00	-12.01	3.10	3	Vertical	16	1.01	-
5610MHz	Pass	AV	5.604G	99.33	Inf	-Inf	3.35	3	Vertical	16	1.01	-
5610MHz	Pass	PK	5.459G	54.96	74.00	-19.04	3.10	3	Vertical	16	1.01	-
5610MHz	Pass	PK	5.603G	109.59	Inf	-Inf	3.34	3	Vertical	16	1.01	-
5610MHz	Pass	PK	5.726G	56.94	68.20	-11.26	3.59	3	Vertical	16	1.01	-
5610MHz	Pass	AV	5.46G	41.58	54.00	-12.42	3.10	3	Horizontal	28	2.50	-
5610MHz	Pass	AV	5.617G	94.88	Inf	-Inf	3.37	3	Horizontal	28	2.50	-
5610MHz	Pass	PK	5.458G	54.44	74.00	-19.56	3.09	3	Horizontal	28	2.50	-
5610MHz	Pass	PK	5.615G	105.28	Inf	-Inf	3.37	3	Horizontal	28	2.50	-
5610MHz	Pass	PK	5.789G	55.94	68.20	-12.26	3.70	3	Horizontal	28	2.50	-
5610MHz	Pass	AV	11.22138G	41.06	54.00	-12.94	16.76	3	Vertical	177	1.65	-
5610MHz	Pass	PK	11.2217G	54.67	74.00	-19.33	16.76	3	Vertical	177	1.65	-
5610MHz	Pass	AV	11.21678G	41.03	54.00	-12.97	16.77	3	Horizontal	144	1.93	-
5610MHz	Pass	PK	11.21572G	54.39	74.00	-19.61	16.77	3	Horizontal	144	1.93	-
5690MHz Straddle 5.47-5.725GHz	Pass	AV	5.4584G	41.12	54.00	-12.88	3.10	3	Vertical	15	1.01	-
5690MHz Straddle 5.47-5.725GHz	Pass	AV	5.684G	97.75	Inf	-Inf	3.51	3	Vertical	15	1.01	-
5690MHz Straddle 5.47-5.725GHz	Pass	PK	5.4116G	54.32	74.00	-19.68	3.05	3	Vertical	15	1.01	-
5690MHz Straddle 5.47-5.725GHz	Pass	PK	5.684G	109.82	Inf	-Inf	3.51	3	Vertical	15	1.01	-
5690MHz Straddle 5.47-5.725GHz	Pass	PK	5.9084G	55.63	68.20	-12.57	3.95	3	Vertical	15	1.01	-
5690MHz Straddle 5.47-5.725GHz	Pass	AV	5.4572G	40.97	54.00	-13.03	3.09	3	Horizontal	27	2.72	-
5690MHz Straddle 5.47-5.725GHz	Pass	AV	5.6984G	93.46	Inf	-Inf	3.54	3	Horizontal	27	2.72	-
5690MHz Straddle 5.47-5.725GHz	Pass	PK	5.3972G	54.68	74.00	-19.32	3.03	3	Horizontal	27	2.72	-
5690MHz Straddle 5.47-5.725GHz	Pass	PK	5.6984G	105.46	Inf	-Inf	3.54	3	Horizontal	27	2.72	-
5690MHz Straddle 5.47-5.725GHz	Pass	PK	5.9348G	55.34	68.20	-12.86	4.00	3	Horizontal	27	2.72	-
5690MHz Straddle 5.47-5.725GHz	Pass	AV	11.38358G	41.11	54.00	-12.89	16.65	3	Vertical	272	1.72	-
5690MHz Straddle 5.47-5.725GHz	Pass	PK	11.3838G	55.21	74.00	-18.79	16.65	3	Vertical	272	1.72	-
5690MHz Straddle 5.47-5.725GHz	Pass	AV	11.3835G	41.09	54.00	-12.91	16.65	3	Horizontal	120	2.05	-
5690MHz Straddle 5.47-5.725GHz	Pass	PK	11.37938G	55.81	74.00	-18.19	16.66	3	Horizontal	120	2.05	-
5775MHz	Pass	AV	5.769G	97.72	Inf	-Inf	3.68	3	Vertical	15	1.01	-
5775MHz	Pass	PK	5.6466G	56.46	68.20	-11.74	3.44	3	Vertical	15	1.01	-
5775MHz	Pass	PK	5.7702G	107.79	Inf	-Inf	3.68	3	Vertical	15	1.01	-
5775MHz	Pass	PK	5.9346G	56.16	68.20	-12.04	4.00	3	Vertical	15	1.01	-
5775MHz	Pass	AV	5.7702G	95.53	Inf	-Inf	3.68	3	Horizontal	15	2.78	-
5775MHz	Pass	PK	5.6478G	56.61	68.20	-11.59	3.44	3	Horizontal	15	2.78	-
5775MHz	Pass	PK	5.7678G	106.05	Inf	-Inf	3.67	3	Horizontal	15	2.78	-
5775MHz	Pass	PK	5.9814G	54.90	68.20	-13.30	4.09	3	Horizontal	15	2.78	-
5775MHz	Pass	AV	11.5453G	40.61	54.00	-13.39	16.55	3	Vertical	316	2.15	-
5775MHz	Pass	PK	11.55308G	54.30	74.00	-19.70	16.54	3	Vertical	316	2.15	-
5775MHz	Pass	AV	11.55108G	40.67	54.00	-13.33	16.54	3	Horizontal	299	1.36	-
5775MHz	Pass	PK	11.5484G	54.36	74.00	-19.64	16.54	3	Horizontal	299	1.36	-



RSE TX above 1GHz Result

Appendix E.2

5210MHz	Pass	AV	5.148G	52.81	54.00	-1.19	7.00	3	Vertical	352	1.12	-
5210MHz	Pass	AV	5.213G	94.33	Inf	-Inf	7.04	3	Vertical	352	1.12	-
5210MHz	Pass	AV	5.422G	46.05	54.00	-7.95	7.43	3	Vertical	352	1.12	-
5210MHz	Pass	PK	5.145G	65.22	74.00	-8.78	7.00	3	Vertical	352	1.12	-
5210MHz	Pass	PK	5.224G	106.64	Inf	-Inf	7.06	3	Vertical	352	1.12	-
5210MHz	Pass	PK	5.415G	58.84	74.00	-15.16	7.42	3	Vertical	352	1.12	-
5210MHz	Pass	AV	5.147G	52.81	54.00	-1.19	7.00	3	Horizontal	5	2.27	-
5210MHz	Pass	AV	5.214G	92.57	Inf	-Inf	7.05	3	Horizontal	5	2.27	-
5210MHz	Pass	AV	5.424G	45.90	54.00	-8.10	7.43	3	Horizontal	5	2.27	-
5210MHz	Pass	PK	5.148G	66.28	74.00	-7.72	7.00	3	Horizontal	5	2.27	-
5210MHz	Pass	PK	5.203G	106.42	Inf	-Inf	7.02	3	Horizontal	5	2.27	-
5210MHz	Pass	PK	5.419G	58.73	74.00	-15.27	7.42	3	Horizontal	5	2.27	-
5210MHz	Pass	AV	10.42048G	42.33	54.00	-11.67	15.95	3	Vertical	73	1.13	-
5210MHz	Pass	PK	10.4236G	56.23	74.00	-17.77	15.95	3	Vertical	73	1.13	-
5210MHz	Pass	AV	10.42304G	42.39	54.00	-11.61	15.95	3	Horizontal	248	2.26	-
5210MHz	Pass	PK	10.42056G	56.60	74.00	-17.40	15.95	3	Horizontal	248	2.26	-
5290MHz	Pass	AV	5.147G	42.64	54.00	-11.36	2.74	3	Vertical	14	1.01	-
5290MHz	Pass	AV	5.293G	95.18	Inf	-Inf	2.91	3	Vertical	14	1.01	-
5290MHz	Pass	AV	5.351G	52.01	54.00	-1.99	2.97	3	Vertical	14	1.01	-
5290MHz	Pass	PK	5.088G	55.56	74.00	-18.44	2.66	3	Vertical	14	1.01	-
5290MHz	Pass	PK	5.286G	106.99	Inf	-Inf	2.89	3	Vertical	14	1.01	-
5290MHz	Pass	PK	5.35G	64.31	74.00	-9.69	2.97	3	Vertical	14	1.01	-
5290MHz	Pass	AV	5.147G	42.70	54.00	-11.30	2.74	3	Horizontal	24	2.78	-
5290MHz	Pass	AV	5.293G	93.32	Inf	-Inf	2.91	3	Horizontal	24	2.78	-
5290MHz	Pass	AV	5.352G	50.30	54.00	-3.70	2.97	3	Horizontal	24	2.78	-
5290MHz	Pass	PK	5.106G	55.25	74.00	-18.75	2.68	3	Horizontal	24	2.78	-
5290MHz	Pass	PK	5.286G	105.76	Inf	-Inf	2.89	3	Horizontal	24	2.78	-
5290MHz	Pass	PK	5.35G	63.87	74.00	-10.13	2.97	3	Horizontal	24	2.78	-
5290MHz	Pass	AV	10.5772G	41.80	54.00	-12.20	16.21	3	Vertical	340	1.29	-
5290MHz	Pass	PK	10.57544G	55.37	74.00	-18.63	16.21	3	Vertical	340	1.29	-
5290MHz	Pass	AV	10.57726G	41.85	54.00	-12.15	16.21	3	Horizontal	352	1.88	-
5290MHz	Pass	PK	10.5798G	55.78	74.00	-18.22	16.21	3	Horizontal	352	1.88	-
5530MHz	Pass	AV	5.459G	52.74	54.00	-1.26	3.10	3	Vertical	10	1.00	-
5530MHz	Pass	AV	5.542G	93.89	Inf	-Inf	3.23	3	Vertical	10	1.00	-
5530MHz	Pass	PK	5.467G	67.24	68.20	-0.96	3.11	3	Vertical	10	1.00	-
5530MHz	Pass	PK	5.523G	107.54	Inf	-Inf	3.19	3	Vertical	10	1.00	-
5530MHz	Pass	PK	5.728G	56.07	68.20	-12.13	3.59	3	Vertical	10	1.00	-
5530MHz	Pass	AV	5.459G	49.20	54.00	-4.80	3.10	3	Horizontal	22	2.99	-
5530MHz	Pass	AV	5.526G	92.18	Inf	-Inf	3.20	3	Horizontal	22	2.99	-
5530MHz	Pass	PK	5.461G	63.33	68.20	-4.87	3.10	3	Horizontal	22	2.99	-
5530MHz	Pass	PK	5.536G	104.42	Inf	-Inf	3.22	3	Horizontal	22	2.99	-
5530MHz	Pass	PK	5.769G	55.53	68.20	-12.67	3.68	3	Horizontal	22	2.99	-
5530MHz	Pass	AV	11.06388G	41.44	54.00	-12.56	16.87	3	Vertical	67	1.97	-
5530MHz	Pass	PK	11.06468G	55.37	74.00	-18.63	16.87	3	Vertical	67	1.97	-
5530MHz	Pass	AV	11.055G	41.46	54.00	-12.54	16.87	3	Horizontal	46	1.88	-
5530MHz	Pass	PK	11.05542G	55.08	74.00	-18.92	16.87	3	Horizontal	46	1.88	-
5610MHz	Pass	AV	5.46G	46.48	54.00	-7.52	4.25	3	Vertical	21	1.01	-
5610MHz	Pass	AV	5.622G	100.23	Inf	-Inf	4.50	3	Vertical	21	1.01	-
5610MHz	Pass	PK	5.465G	58.87	68.20	-9.33	4.26	3	Vertical	21	1.01	-
5610MHz	Pass	PK	5.601G	110.67	Inf	-Inf	4.47	3	Vertical	21	1.01	-
5610MHz	Pass	PK	5.73G	59.84	68.20	-8.36	4.67	3	Vertical	21	1.01	-



**RSE TX above 1GHz Result**

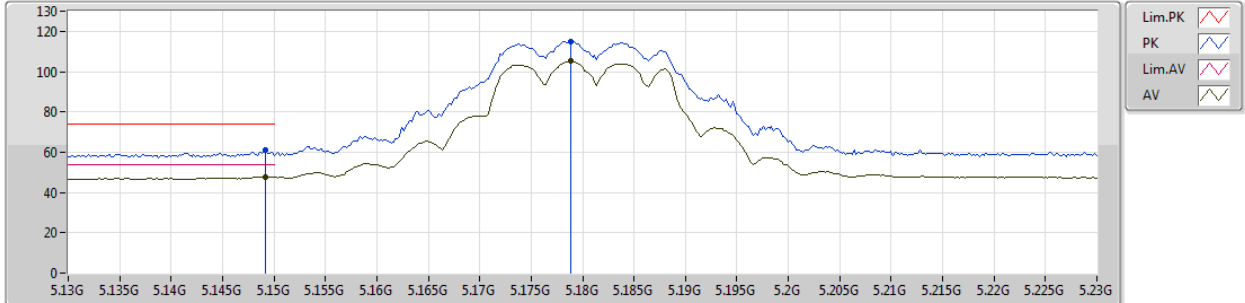
**Appendix E.2**

5610MHz	Pass	AV	5.45G	45.77	54.00	-8.23	4.23	3	Horizontal	40	2.39	-
5610MHz	Pass	AV	5.613G	95.60	Inf	-Inf	4.50	3	Horizontal	40	2.39	-
5610MHz	Pass	PK	5.468G	57.13	68.20	-11.07	4.26	3	Horizontal	40	2.39	-
5610MHz	Pass	PK	5.601G	106.40	Inf	-Inf	4.47	3	Horizontal	40	2.39	-
5610MHz	Pass	PK	5.748G	60.01	68.20	-8.19	4.71	3	Horizontal	40	2.39	-
5610MHz	Pass	AV	11.21982G	40.92	54.00	-13.08	16.76	3	Vertical	159	2.03	-
5610MHz	Pass	PK	11.21514G	54.47	74.00	-19.53	16.77	3	Vertical	159	2.03	-
5610MHz	Pass	AV	11.2199G	40.88	54.00	-13.12	16.76	3	Horizontal	130	1.99	-
5610MHz	Pass	PK	11.22396G	54.51	74.00	-19.49	16.76	3	Horizontal	130	1.99	-
5690MHz Straddle 5.47-5.725GHz	Pass	AV	5.4008G	45.69	54.00	-8.31	4.14	3	Vertical	27	1.01	-
5690MHz Straddle 5.47-5.725GHz	Pass	AV	5.6864G	100.41	Inf	-Inf	4.60	3	Vertical	27	1.01	-
5690MHz Straddle 5.47-5.725GHz	Pass	PK	5.4608G	57.23	68.20	-10.97	4.25	3	Vertical	27	1.01	-
5690MHz Straddle 5.47-5.725GHz	Pass	PK	5.6948G	110.75	Inf	-Inf	4.62	3	Vertical	27	1.01	-
5690MHz Straddle 5.47-5.725GHz	Pass	PK	5.882G	59.33	68.20	-8.87	4.92	3	Vertical	27	1.01	-
5690MHz Straddle 5.47-5.725GHz	Pass	AV	5.4032G	45.68	54.00	-8.32	4.14	3	Horizontal	44	2.34	-
5690MHz Straddle 5.47-5.725GHz	Pass	AV	5.678G	95.69	Inf	-Inf	4.60	3	Horizontal	44	2.34	-
5690MHz Straddle 5.47-5.725GHz	Pass	PK	5.4608G	56.64	68.20	-11.56	4.25	3	Horizontal	44	2.34	-
5690MHz Straddle 5.47-5.725GHz	Pass	PK	5.6948G	106.46	Inf	-Inf	4.62	3	Horizontal	44	2.34	-
5690MHz Straddle 5.47-5.725GHz	Pass	PK	5.9612G	59.00	68.20	-9.20	5.04	3	Horizontal	44	2.34	-
5690MHz Straddle 5.47-5.725GHz	Pass	AV	11.37956G	41.40	54.00	-12.60	16.66	3	Vertical	266	2.28	-
5690MHz Straddle 5.47-5.725GHz	Pass	PK	11.3778G	55.69	74.00	-18.31	16.66	3	Vertical	266	2.28	-
5690MHz Straddle 5.47-5.725GHz	Pass	AV	11.38054G	41.41	54.00	-12.59	16.66	3	Horizontal	159	2.09	-
5690MHz Straddle 5.47-5.725GHz	Pass	PK	11.37952G	55.46	74.00	-18.54	16.66	3	Horizontal	159	2.09	-
5775MHz	Pass	PK	5.6406G	59.42	68.20	-8.78	4.54	3	Vertical	23	1.01	-
5775MHz	Pass	PK	5.7798G	109.93	Inf	-Inf	4.75	3	Vertical	23	1.01	-
5775MHz	Pass	AV	5.7714G	99.42	Inf	-Inf	4.75	3	Vertical	23	1.01	-
5775MHz	Pass	PK	5.9538G	58.65	68.20	-9.55	5.03	3	Vertical	23	1.01	-
5775MHz	Pass	AV	5.7786G	95.40	Inf	-Inf	4.75	3	Horizontal	37	2.45	-
5775MHz	Pass	PK	5.5866G	58.30	68.20	-9.90	4.44	3	Horizontal	37	2.45	-
5775MHz	Pass	PK	5.7714G	106.03	Inf	-Inf	4.75	3	Horizontal	37	2.45	-
5775MHz	Pass	PK	5.9346G	58.91	68.20	-9.29	5.00	3	Horizontal	37	2.45	-
5775MHz	Pass	AV	11.5536G	40.63	54.00	-13.37	16.53	3	Vertical	124	1.23	-
5775MHz	Pass	PK	11.54944G	54.34	74.00	-19.66	16.54	3	Vertical	124	1.23	-
5775MHz	Pass	AV	11.55324G	40.56	54.00	-13.44	16.54	3	Horizontal	113	1.13	-
5775MHz	Pass	PK	11.5513G	54.23	74.00	-19.77	16.54	3	Horizontal	113	1.13	-

802.11a\_Nss1,(6Mbps)\_2TX

05/10/2018

5180MHz\_TX



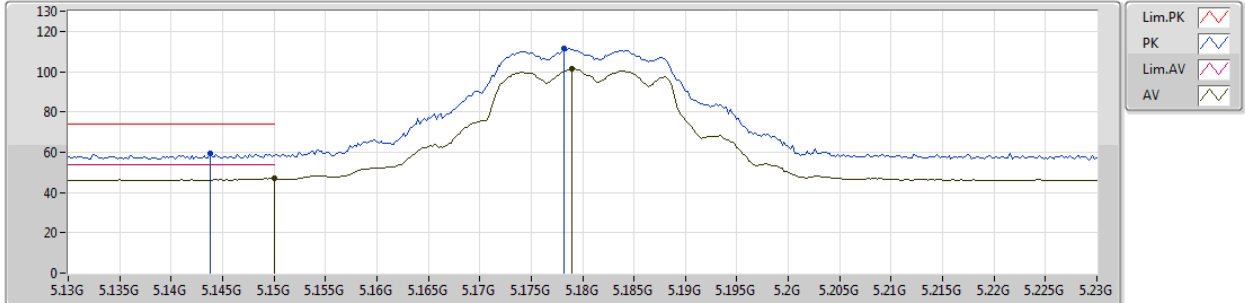
Type	Freq (Hz)	Level (dBuV/m)	Limit (dBuV/m)	Margin (dB)	Factor (dB)	Dist (m)	Condition	Azimuth (°)	Height (m)	Comments
AV	5.1492G	47.75	54.00	-6.25	7.00	3	Vertical	360	1.13	-
AV	5.1788G	105.08	Inf	-Inf	7.02	3	Vertical	360	1.13	-
PK	5.1492G	60.99	74.00	-13.01	7.00	3	Vertical	360	1.13	-
PK	5.1788G	115.10	Inf	-Inf	7.02	3	Vertical	360	1.13	-



802.11a\_Nss1,(6Mbps)\_2TX

05/10/2018

5180MHz\_TX



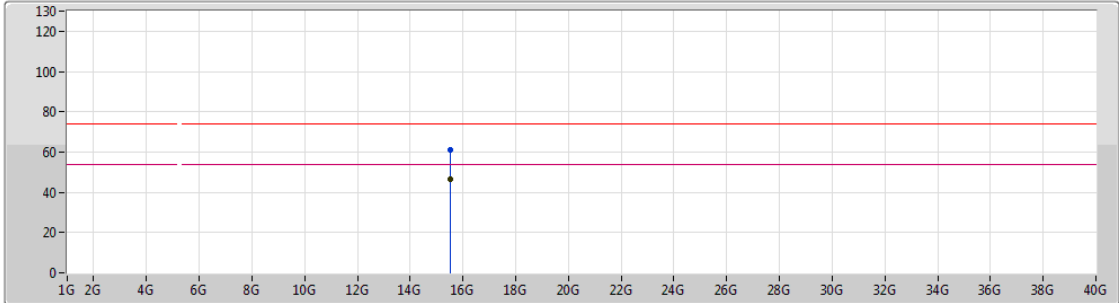
Type	Freq (Hz)	Level (dBuV/m)	Limit (dBuV/m)	Margin (dB)	Factor (dB)	Dist (m)	Condition	Azimuth (°)	Height (m)	Comments
AV	5.15G	47.00	54.00	-7.00	7.00	3	Horizontal	14	1.50	-
AV	5.179G	101.21	Inf	-Inf	7.02	3	Horizontal	14	1.50	-
PK	5.1438G	59.19	74.00	-14.81	7.00	3	Horizontal	14	1.50	-
PK	5.1782G	111.40	Inf	-Inf	7.02	3	Horizontal	14	1.50	-



802.11a\_Nss1,(6Mbps)\_2TX

05/10/2018

5180MHz\_TX



Lim.PK    
 PK    
 Lim.AV    
 AV

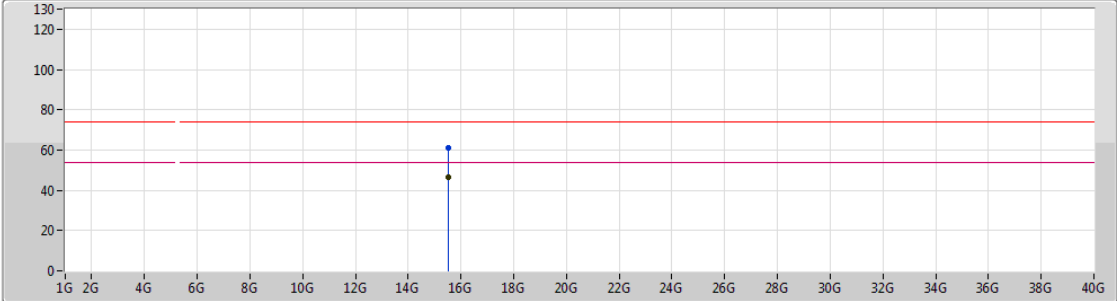
Type	Freq (Hz)	Level (dBuV/m)	Limit (dBuV/m)	Margin (dB)	Factor (dB)	Dist (m)	Condition	Azimuth (°)	Height (m)	Comments
AV	15.5256G	46.75	54.00	-7.25	15.67	3	Vertical	164	1.50	-
PK	15.53016G	60.99	74.00	-13.01	15.65	3	Vertical	164	1.50	-



802.11a\_Nss1,(6Mbps)\_2TX

05/10/2018

5180MHz\_TX



Legend for the plot:

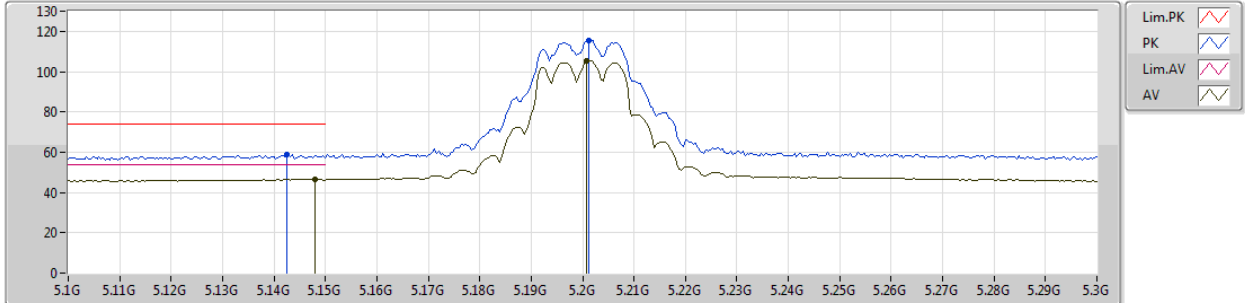
- Lim.PK: Red line with a downward-pointing triangle
- PK: Blue line with an upward-pointing triangle
- Lim.AV: Red line with a downward-pointing triangle
- AV: Blue line with an upward-pointing triangle

Type	Freq (Hz)	Level (dBuV/m)	Limit (dBuV/m)	Margin (dB)	Factor (dB)	Dist (m)	Condition	Azimuth (°)	Height (m)	Comments
AV	15.52518G	46.67	54.00	-7.33	15.67	3	Horizontal	212	2.98	-
PK	15.5262G	61.28	74.00	-12.72	15.66	3	Horizontal	212	2.98	-

802.11a\_Nss1,(6Mbps)\_2TX

05/10/2018

5200MHz\_TX

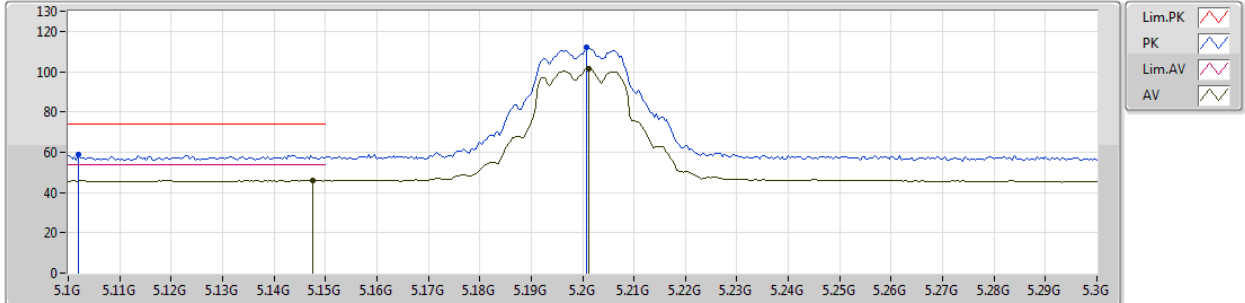


Type	Freq (Hz)	Level (dBuV/m)	Limit (dBuV/m)	Margin (dB)	Factor (dB)	Dist (m)	Condition	Azimuth (°)	Height (m)	Comments
AV	5.148G	46.61	54.00	-7.39	7.00	3	Vertical	359	1.17	-
AV	5.2008G	105.47	Inf	-Inf	7.02	3	Vertical	359	1.17	-
PK	5.1424G	58.70	74.00	-15.30	7.00	3	Vertical	359	1.17	-
PK	5.2012G	115.58	Inf	-Inf	7.02	3	Vertical	359	1.17	-

802.11a\_Nss1,(6Mbps)\_2TX

05/10/2018

5200MHz\_TX



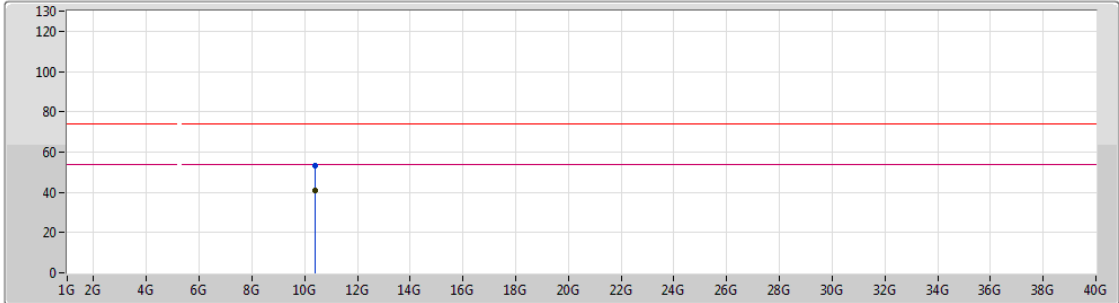
Type	Freq (Hz)	Level (dBuV/m)	Limit (dBuV/m)	Margin (dB)	Factor (dB)	Dist (m)	Condition	Azimuth (°)	Height (m)	Comments
AV	5.1476G	46.11	54.00	-7.89	7.00	3	Horizontal	15	1.54	-
AV	5.2012G	101.51	Inf	-Inf	7.02	3	Horizontal	15	1.54	-
PK	5.102G	58.63	74.00	-15.37	6.98	3	Horizontal	15	1.54	-
PK	5.2008G	111.98	Inf	-Inf	7.02	3	Horizontal	15	1.54	-



802.11a\_Nss1,(6Mbps)\_2TX

09/10/2018

5200MHz\_TX



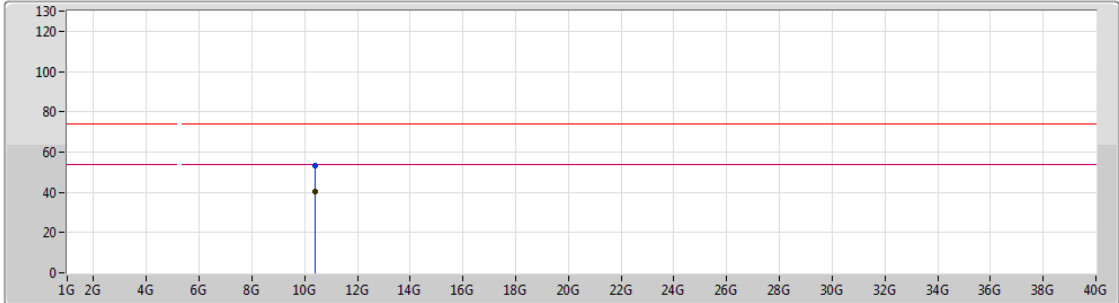
Type	Freq (Hz)	Level (dBuV/m)	Limit (dBuV/m)	Margin (dB)	Factor (dB)	Dist (m)	Condition	Azimuth (°)	Height (m)	Comments
AV	10.3976G	41.08	54.00	-12.92	12.72	3	Vertical	314	2.99	-
PK	10.39778G	53.38	74.00	-20.62	12.72	3	Vertical	314	2.99	-



802.11a\_Nss1,(6Mbps)\_2TX

09/10/2018

5200MHz\_TX



Lim.PK  
 PK  
 Lim.AV  
 AV

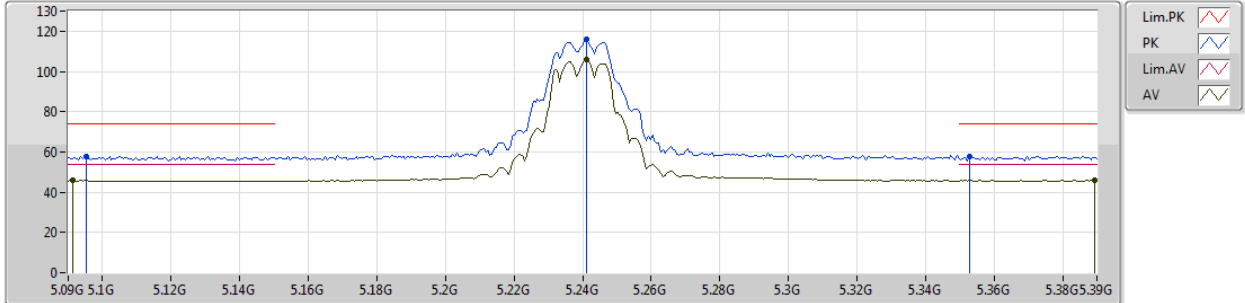
Type	Freq (Hz)	Level (dBuV/m)	Limit (dBuV/m)	Margin (dB)	Factor (dB)	Dist (m)	Condition	Azimuth (°)	Height (m)	Comments
AV	10.40042G	40.25	54.00	-13.75	12.73	3	Horizontal	37	1.50	-
PK	10.41026G	53.22	74.00	-20.78	12.74	3	Horizontal	37	1.50	-



802.11a\_Nss1,(6Mbps)\_2TX

05/10/2018

5240MHz\_TX



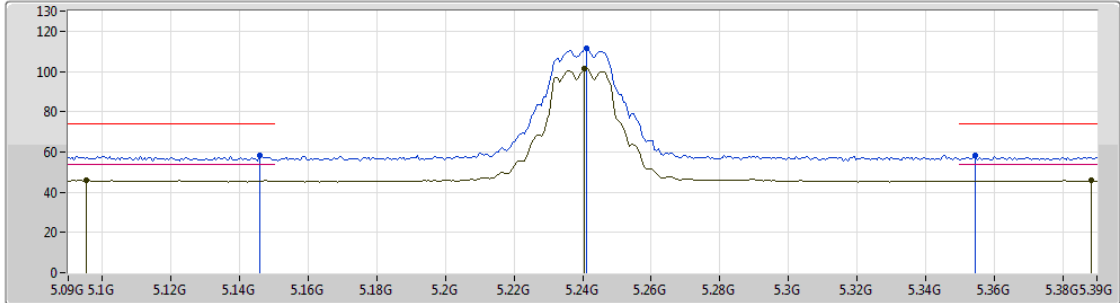
Type	Freq (Hz)	Level (dBuV/m)	Limit (dBuV/m)	Margin (dB)	Factor (dB)	Dist (m)	Condition	Azimuth (°)	Height (m)	Comments
AV	5.0912G	45.90	54.00	-8.10	6.97	3	Vertical	0	1.21	-
AV	5.2412G	106.04	Inf	-Inf	7.09	3	Vertical	0	1.21	-
AV	5.3894G	46.15	54.00	-7.85	7.38	3	Vertical	0	1.21	-
PK	5.0954G	57.94	74.00	-16.06	6.98	3	Vertical	0	1.21	-
PK	5.2412G	115.75	Inf	-Inf	7.09	3	Vertical	0	1.21	-
PK	5.3528G	57.58	74.00	-16.42	7.31	3	Vertical	0	1.21	-







802.11a\_Nss1,(6Mbps)\_2TX

05/10/2018

5240MHz\_TX



Lim.PK    
 PK    
 Lim.AV    
 AV  

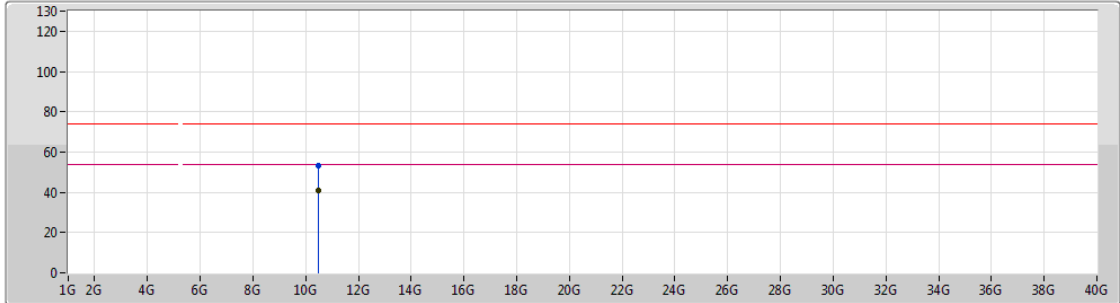
Type	Freq (Hz)	Level (dBuV/m)	Limit (dBuV/m)	Margin (dB)	Factor (dB)	Dist (m)	Condition	Azimuth (°)	Height (m)	Comments
AV	5.0954G	46.10	54.00	-7.90	6.98	3	Horizontal	12	1.81	-
AV	5.2406G	101.58	Inf	-Inf	7.09	3	Horizontal	12	1.81	-
AV	5.3882G	45.80	54.00	-8.20	7.38	3	Horizontal	12	1.81	-
PK	5.1458G	58.54	74.00	-15.46	7.00	3	Horizontal	12	1.81	-
PK	5.2412G	111.59	Inf	-Inf	7.09	3	Horizontal	12	1.81	-
PK	5.3546G	58.07	74.00	-15.93	7.31	3	Horizontal	12	1.81	-



802.11a\_Nss1,(6Mbps)\_2TX

09/10/2018

5240MHz\_TX



Lim.PK    
 PK    
 Lim.AV    
 AV

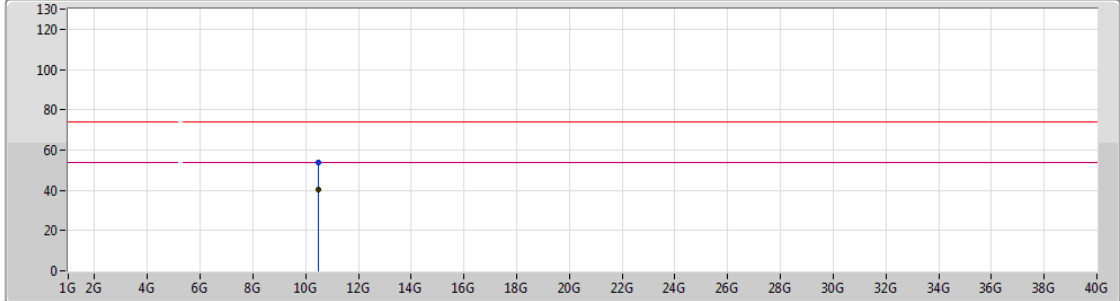
Type	Freq (Hz)	Level (dBuV/m)	Limit (dBuV/m)	Margin (dB)	Factor (dB)	Dist (m)	Condition	Azimuth (°)	Height (m)	Comments
AV	10.47784G	40.94	54.00	-13.06	12.90	3	Vertical	66	2.05	-
PK	10.48144G	53.34	74.00	-20.66	12.90	3	Vertical	66	2.05	-



802.11a\_Nss1,(6Mbps)\_2TX

09/10/2018

5240MHz\_TX

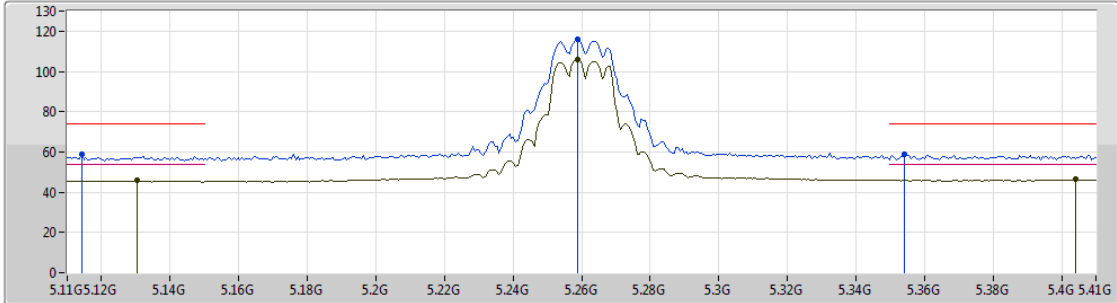


Type	Freq (Hz)	Level (dBuV/m)	Limit (dBuV/m)	Margin (dB)	Factor (dB)	Dist (m)	Condition	Azimuth (°)	Height (m)	Comments
AV	10.47244G	40.48	54.00	-13.52	12.88	3	Horizontal	46	1.50	-
PK	10.4758G	53.56	74.00	-20.44	12.89	3	Horizontal	46	1.50	-

802.11a\_Nss1,(6Mbps)\_2TX

05/10/2018

5260MHz\_TX

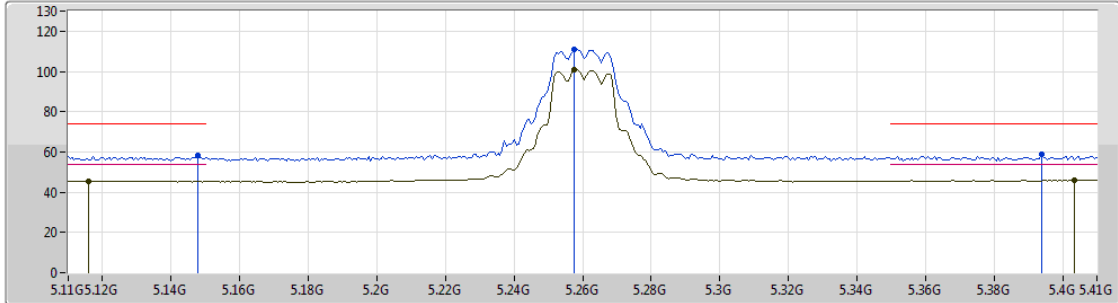


Type	Freq (Hz)	Level (dBuV/m)	Limit (dBuV/m)	Margin (dB)	Factor (dB)	Dist (m)	Condition	Azimuth (°)	Height (m)	Comments
AV	5.1304G	45.67	54.00	-8.33	7.00	3	Vertical	358	1.18	-
AV	5.2588G	106.18	Inf	-Inf	7.14	3	Vertical	358	1.18	-
AV	5.404G	46.23	54.00	-7.77	7.40	3	Vertical	358	1.18	-
PK	5.1142G	58.78	74.00	-15.22	6.98	3	Vertical	358	1.18	-
PK	5.2588G	115.81	Inf	-Inf	7.14	3	Vertical	358	1.18	-
PK	5.3542G	58.65	74.00	-15.35	7.31	3	Vertical	358	1.18	-

802.11a\_Nss1,(6Mbps)\_2TX

05/10/2018

5260MHz\_TX



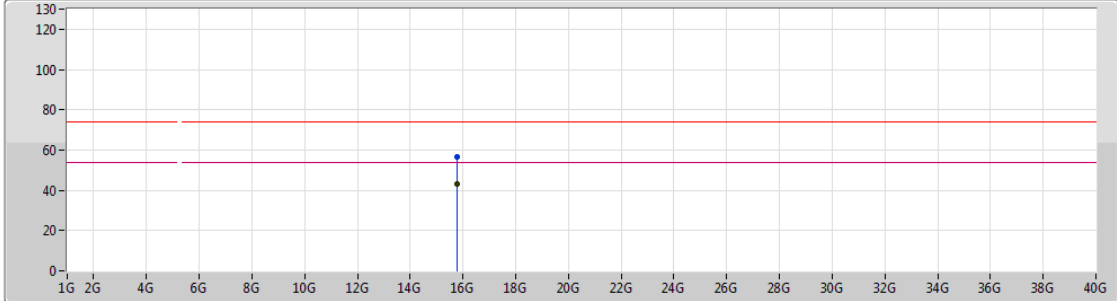
Type	Freq (Hz)	Level (dBuV/m)	Limit (dBuV/m)	Margin (dB)	Factor (dB)	Dist (m)	Condition	Azimuth (°)	Height (m)	Comments
AV	5.116G	45.59	54.00	-8.41	6.98	3	Horizontal	12	2.02	-
AV	5.2576G	100.90	Inf	-Inf	7.13	3	Horizontal	12	2.02	-
AV	5.4034G	46.00	54.00	-8.00	7.40	3	Horizontal	12	2.02	-
PK	5.1478G	58.19	74.00	-15.81	7.00	3	Horizontal	12	2.02	-
PK	5.2576G	110.91	Inf	-Inf	7.13	3	Horizontal	12	2.02	-
PK	5.3938G	58.66	74.00	-15.34	7.39	3	Horizontal	12	2.02	-



802.11a\_Nss1,(6Mbps)\_2TX

05/10/2018

5260MHz\_TX



Lim.PK    
 PK    
 Lim.AV    
 AV

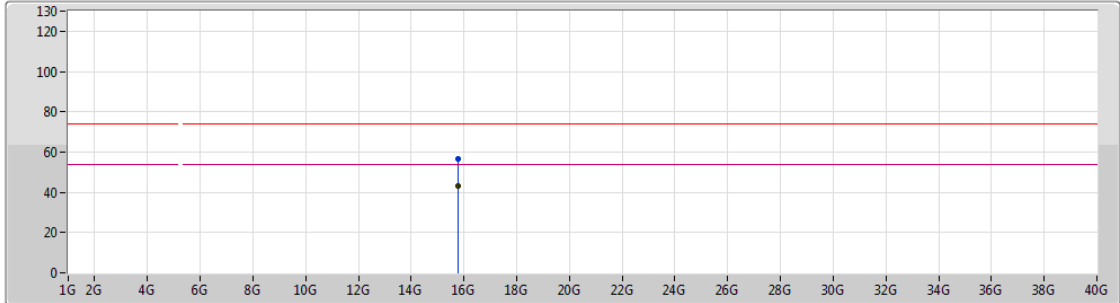
Type	Freq (Hz)	Level (dBuV/m)	Limit (dBuV/m)	Margin (dB)	Factor (dB)	Dist (m)	Condition	Azimuth (°)	Height (m)	Comments
AV	15.79248G	43.32	54.00	-10.68	14.82	3	Vertical	50	1.51	-
PK	15.77898G	56.73	74.00	-17.27	14.86	3	Vertical	50	1.51	-



802.11a\_Nss1,(6Mbps)\_2TX

05/10/2018

5260MHz\_TX



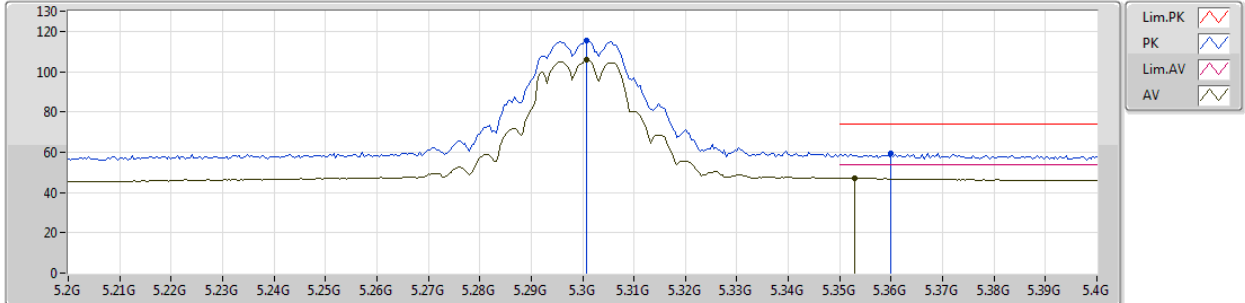
Lim.PK    
 PK    
 Lim.AV    
 AV

Type	Freq (Hz)	Level (dBuV/m)	Limit (dBuV/m)	Margin (dB)	Factor (dB)	Dist (m)	Condition	Azimuth (°)	Height (m)	Comments
AV	15.7842G	43.41	54.00	-10.59	14.84	3	Horizontal	315	2.29	-
PK	15.76788G	56.64	74.00	-17.36	14.89	3	Horizontal	315	2.29	-

802.11a\_Nss1,(6Mbps)\_2TX

05/10/2018

5300MHz\_TX



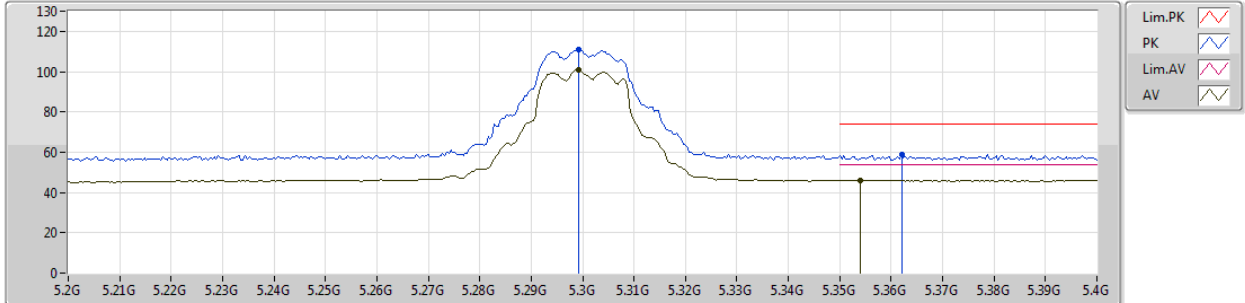
Type	Freq (Hz)	Level (dBuV/m)	Limit (dBuV/m)	Margin (dB)	Factor (dB)	Dist (m)	Condition	Azimuth (°)	Height (m)	Comments
AV	5.3008G	105.79	Inf	-Inf	7.21	3	Vertical	0	1.27	-
AV	5.3528G	47.22	54.00	-6.78	7.31	3	Vertical	0	1.27	-
PK	5.3008G	115.44	Inf	-Inf	7.21	3	Vertical	0	1.27	-
PK	5.36G	59.53	74.00	-14.47	7.32	3	Vertical	0	1.27	-



802.11a\_Nss1,(6Mbps)\_2TX

05/10/2018

5300MHz\_TX



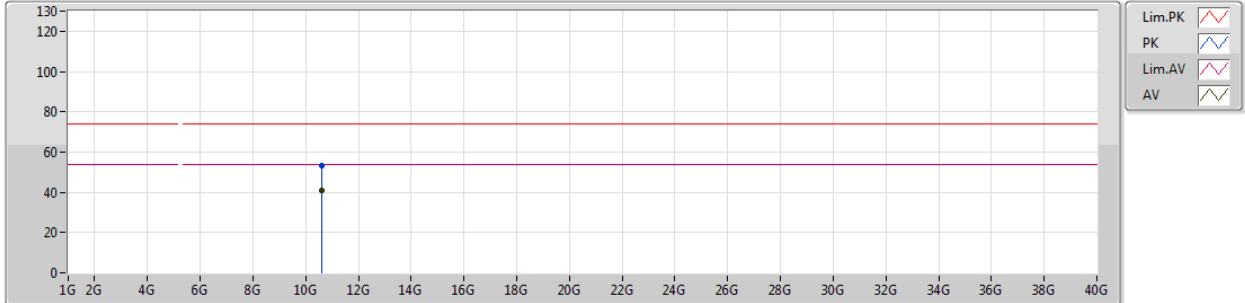
Type	Freq (Hz)	Level (dBuV/m)	Limit (dBuV/m)	Margin (dB)	Factor (dB)	Dist (m)	Condition	Azimuth (°)	Height (m)	Comments
AV	5.2992G	100.68	Inf	-Inf	7.20	3	Horizontal	17	1.86	-
AV	5.354G	46.19	54.00	-7.81	7.31	3	Horizontal	17	1.86	-
PK	5.2992G	111.10	Inf	-Inf	7.20	3	Horizontal	17	1.86	-
PK	5.362G	59.05	74.00	-14.95	7.33	3	Horizontal	17	1.86	-



802.11a\_Nss1,(6Mbps)\_2TX

09/10/2018

5300MHz\_TX



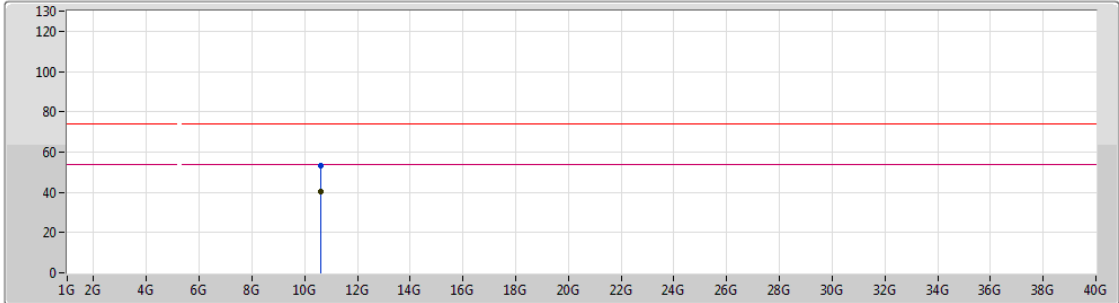
Type	Freq (Hz)	Level (dBuV/m)	Limit (dBuV/m)	Margin (dB)	Factor (dB)	Dist (m)	Condition	Azimuth (°)	Height (m)	Comments
AV	10.59766G	40.68	54.00	-13.32	13.15	3	Vertical	26	2.22	-
PK	10.6024G	53.25	74.00	-20.75	13.16	3	Vertical	26	2.22	-



802.11a\_Nss1,(6Mbps)\_2TX

09/10/2018

5300MHz\_TX



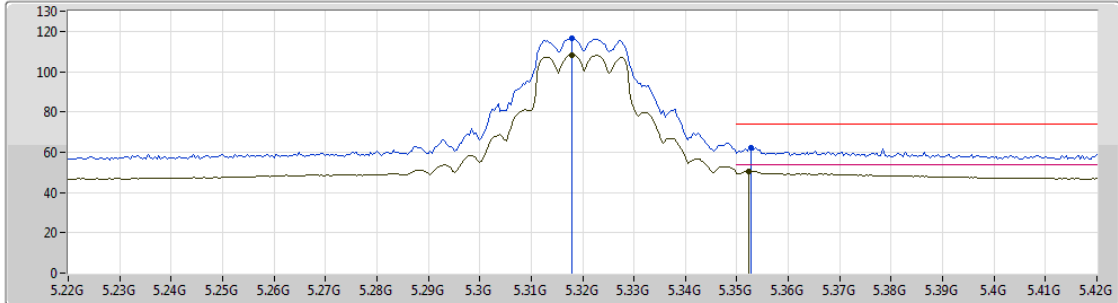
Lim.PK    
 PK    
 Lim.AV    
 AV

Type	Freq (Hz)	Level (dBuV/m)	Limit (dBuV/m)	Margin (dB)	Factor (dB)	Dist (m)	Condition	Azimuth (°)	Height (m)	Comments
AV	10.59304G	40.38	54.00	-13.62	13.14	3	Horizontal	210	1.50	-
PK	10.60216G	53.04	74.00	-20.96	13.16	3	Horizontal	210	1.50	-

802.11a\_Nss1,(6Mbps)\_2TX

06/10/2018

5320MHz\_TX

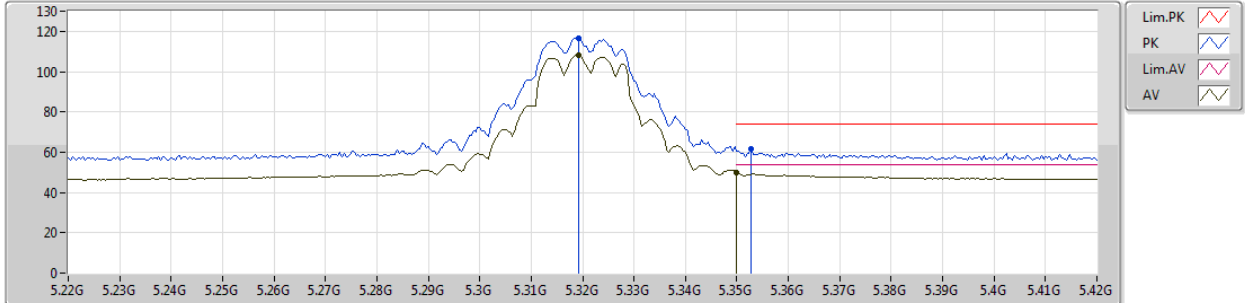


Type	Freq (Hz)	Level (dBuV/m)	Limit (dBuV/m)	Margin (dB)	Factor (dB)	Dist (m)	Condition	Azimuth (°)	Height (m)	Comments
AV	5.318G	108.42	Inf	-Inf	3.99	3	Vertical	355	1.03	-
AV	5.3524G	50.65	54.00	-3.35	4.05	3	Vertical	355	1.03	-
PK	5.318G	116.76	Inf	-Inf	3.99	3	Vertical	355	1.03	-
PK	5.3528G	62.37	74.00	-11.63	4.05	3	Vertical	355	1.03	-

802.11a\_Nss1,(6Mbps)\_2TX

06/10/2018

5320MHz\_TX



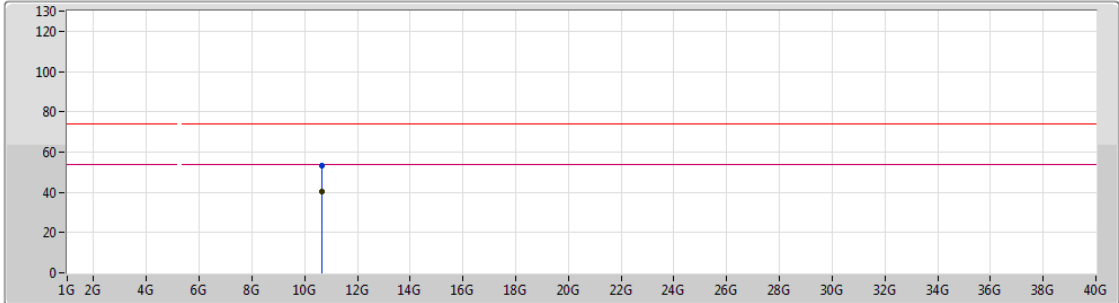
Type	Freq (Hz)	Level (dBuV/m)	Limit (dBuV/m)	Margin (dB)	Factor (dB)	Dist (m)	Condition	Azimuth (°)	Height (m)	Comments
AV	5.3192G	108.14	Inf	-Inf	4.12	3	Horizontal	25	3.12	-
AV	5.35G	49.83	54.00	-4.17	4.17	3	Horizontal	25	3.12	-
PK	5.3192G	116.53	Inf	-Inf	4.12	3	Horizontal	25	3.12	-
PK	5.3528G	61.37	74.00	-12.63	4.17	3	Horizontal	25	3.12	-



802.11a\_Nss1,(6Mbps)\_2TX

09/10/2018

5320MHz\_TX



Lim.PK    
 PK    
 Lim.AV    
 AV

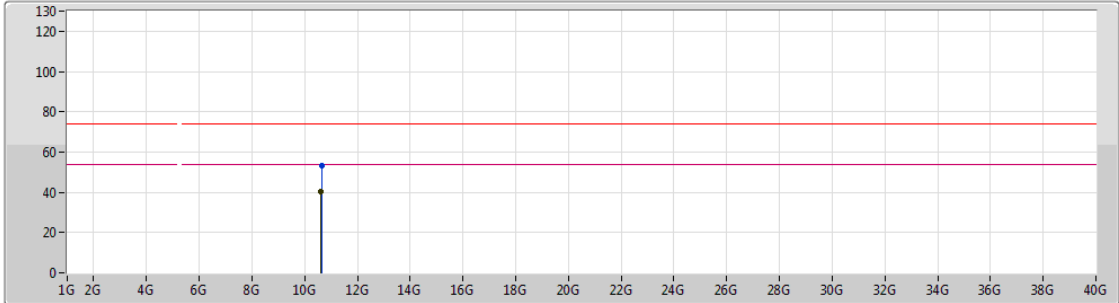
Type	Freq (Hz)	Level (dBuV/m)	Limit (dBuV/m)	Margin (dB)	Factor (dB)	Dist (m)	Condition	Azimuth (°)	Height (m)	Comments
AV	10.64186G	40.11	54.00	-13.89	13.25	3	Vertical	280	2.94	-
PK	10.63382G	53.35	74.00	-20.65	13.24	3	Vertical	280	2.94	-



802.11a\_Nss1,(6Mbps)\_2TX

09/10/2018

5320MHz\_TX

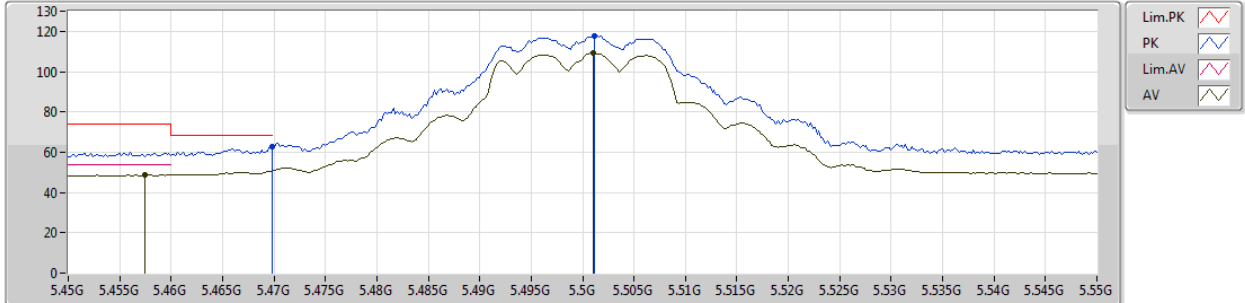


Type	Freq (Hz)	Level (dBuV/m)	Limit (dBuV/m)	Margin (dB)	Factor (dB)	Dist (m)	Condition	Azimuth (°)	Height (m)	Comments
AV	10.62812G	40.46	54.00	-13.54	13.22	3	Horizontal	262	2.19	-
PK	10.64366G	53.11	74.00	-20.89	13.25	3	Horizontal	262	2.19	-

802.11a\_Nss1,(6Mbps)\_2TX

06/10/2018

5500MHz\_TX



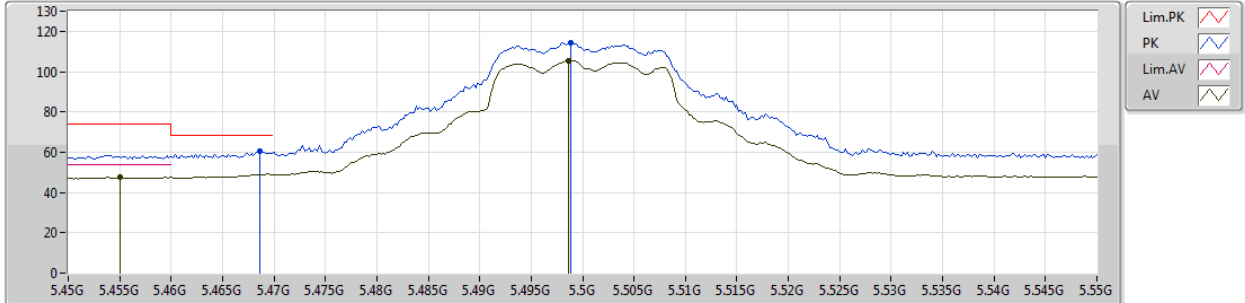
Type	Freq (Hz)	Level (dBuV/m)	Limit (dBuV/m)	Margin (dB)	Factor (dB)	Dist (m)	Condition	Azimuth (°)	Height (m)	Comments
AV	5.4574G	48.76	54.00	-5.24	4.24	3	Vertical	27	1.01	-
AV	5.501G	109.30	Inf	-Inf	4.32	3	Vertical	27	1.01	-
PK	5.4698G	62.98	68.20	-5.22	4.26	3	Vertical	27	1.01	-
PK	5.5012G	117.68	Inf	-Inf	4.32	3	Vertical	27	1.01	-



802.11a\_Nss1,(6Mbps)\_2TX

06/10/2018

5500MHz\_TX



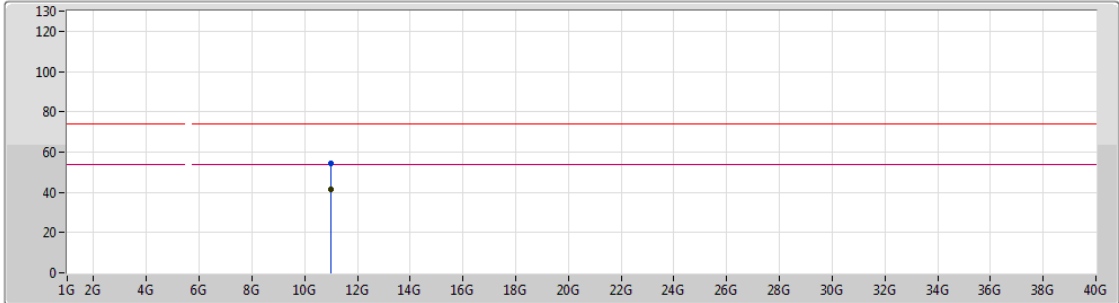
Type	Freq (Hz)	Level (dBuV/m)	Limit (dBuV/m)	Margin (dB)	Factor (dB)	Dist (m)	Condition	Azimuth (°)	Height (m)	Comments
AV	5.455G	47.43	54.00	-6.57	4.35	3	Horizontal	47	2.31	-
AV	5.4986G	105.29	Inf	-Inf	4.43	3	Horizontal	47	2.31	-
PK	5.4686G	60.43	68.20	-7.77	4.37	3	Horizontal	47	2.31	-
PK	5.4988G	114.38	Inf	-Inf	4.43	3	Horizontal	47	2.31	-



802.11a\_Nss1,(6Mbps)\_2TX

09/10/2018

5500MHz\_TX



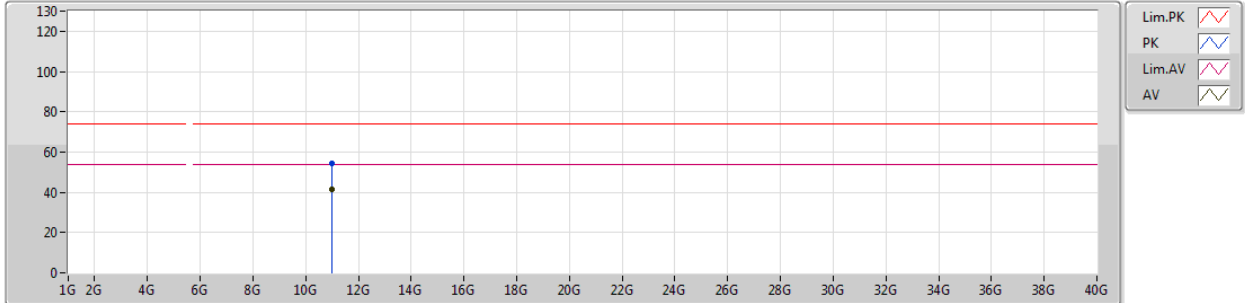
Type	Freq (Hz)	Level (dBuV/m)	Limit (dBuV/m)	Margin (dB)	Factor (dB)	Dist (m)	Condition	Azimuth (°)	Height (m)	Comments
AV	11.00222G	41.24	54.00	-12.76	14.03	3	Vertical	341	2.99	-
PK	11.00468G	54.39	74.00	-19.61	14.02	3	Vertical	341	2.99	-



802.11a\_Nss1,(6Mbps)\_2TX

09/10/2018

5500MHz\_TX

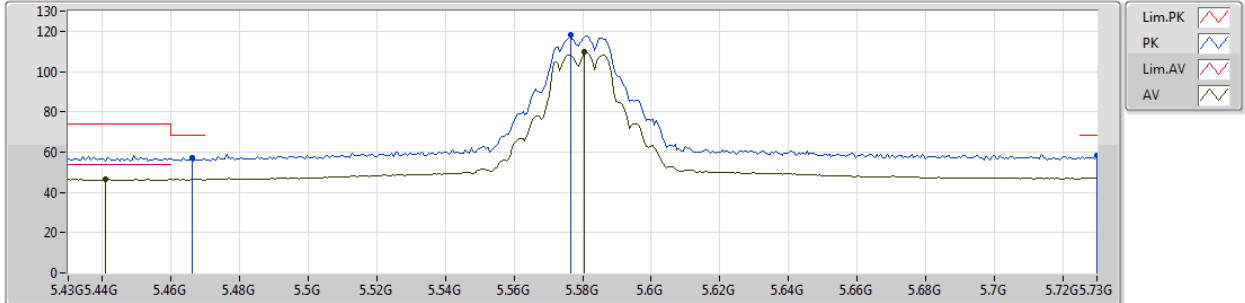


Type	Freq (Hz)	Level (dBuV/m)	Limit (dBuV/m)	Margin (dB)	Factor (dB)	Dist (m)	Condition	Azimuth (°)	Height (m)	Comments
AV	10.988G	41.21	54.00	-12.79	14.00	3	Horizontal	124	1.05	-
PK	10.99496G	54.08	74.00	-19.92	14.02	3	Horizontal	124	1.05	-

802.11a\_Nss1,(6Mbps)\_2TX

06/10/2018

5580MHz\_TX

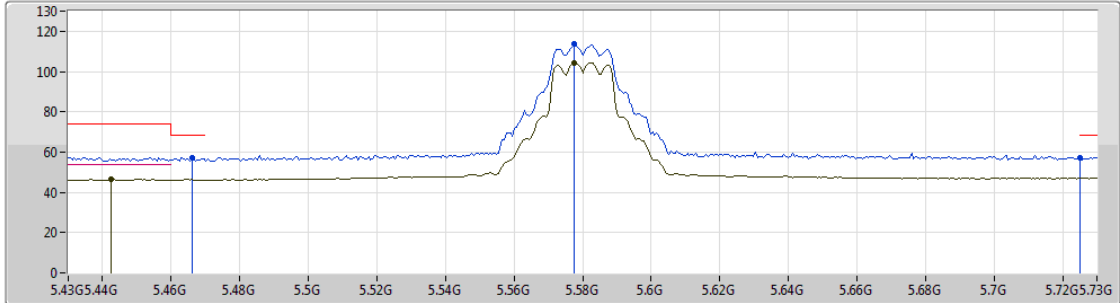


Type	Freq (Hz)	Level (dBuV/m)	Limit (dBuV/m)	Margin (dB)	Factor (dB)	Dist (m)	Condition	Azimuth (°)	Height (m)	Comments
AV	5.4408G	46.37	54.00	-7.63	4.21	3	Vertical	26	1.01	-
AV	5.5806G	109.55	Inf	-Inf	4.44	3	Vertical	26	1.01	-
PK	5.466G	57.17	68.20	-11.03	4.26	3	Vertical	26	1.01	-
PK	5.5764G	118.25	Inf	-Inf	4.44	3	Vertical	26	1.01	-
PK	5.73G	58.09	68.20	-10.11	4.67	3	Vertical	26	1.01	-

802.11a\_Nss1,(6Mbps)\_2TX

06/10/2018

5580MHz\_TX



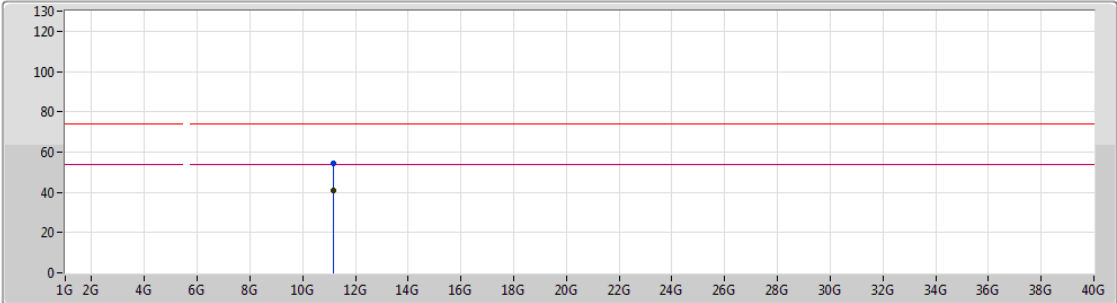
Type	Freq (Hz)	Level (dBuV/m)	Limit (dBuV/m)	Margin (dB)	Factor (dB)	Dist (m)	Condition	Azimuth (°)	Height (m)	Comments
AV	5.4426G	46.49	54.00	-7.51	4.34	3	Horizontal	51	2.35	-
AV	5.5776G	104.27	Inf	-Inf	4.55	3	Horizontal	51	2.35	-
PK	5.466G	57.42	68.20	-10.78	4.37	3	Horizontal	51	2.35	-
PK	5.5776G	113.60	Inf	-Inf	4.55	3	Horizontal	51	2.35	-
PK	5.7252G	57.34	68.20	-10.86	4.79	3	Horizontal	51	2.35	-



802.11a\_Nss1,(6Mbps)\_2TX

09/10/2018

5580MHz\_TX



Lim.PK  
 PK  
 Lim.AV  
 AV

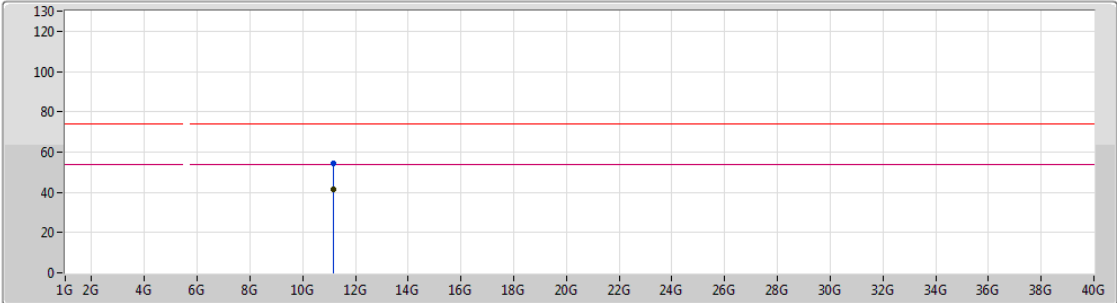
Type	Freq (Hz)	Level (dBuV/m)	Limit (dBuV/m)	Margin (dB)	Factor (dB)	Dist (m)	Condition	Azimuth (°)	Height (m)	Comments
AV	11.16408G	41.10	54.00	-12.90	13.88	3	Vertical	91	1.50	-
PK	11.14938G	54.22	74.00	-19.78	13.90	3	Vertical	91	1.50	-



802.11a\_Nss1,(6Mbps)\_2TX

09/10/2018

5580MHz\_TX



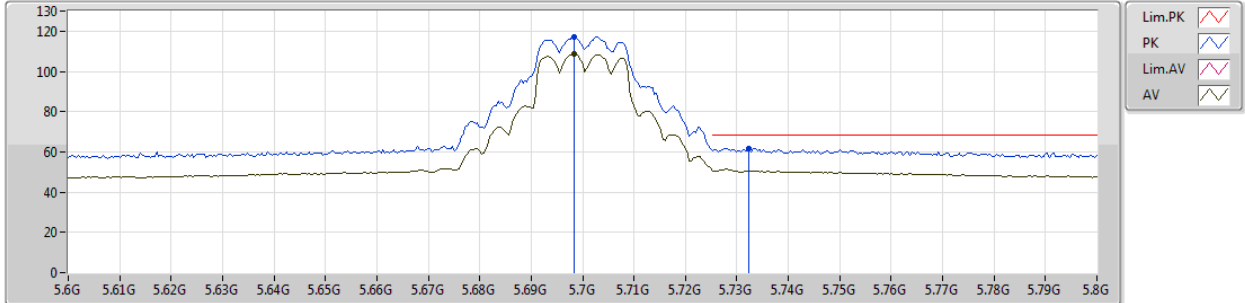
Lim.PK    
 PK    
 Lim.AV    
 AV

Type	Freq (Hz)	Level (dBuV/m)	Limit (dBuV/m)	Margin (dB)	Factor (dB)	Dist (m)	Condition	Azimuth (°)	Height (m)	Comments
AV	11.15934G	41.46	54.00	-12.54	13.89	3	Horizontal	22	1.48	-
PK	11.1627G	54.32	74.00	-19.68	13.88	3	Horizontal	22	1.48	-

802.11a\_Nss1,(6Mbps)\_2TX

06/10/2018

5700MHz\_TX



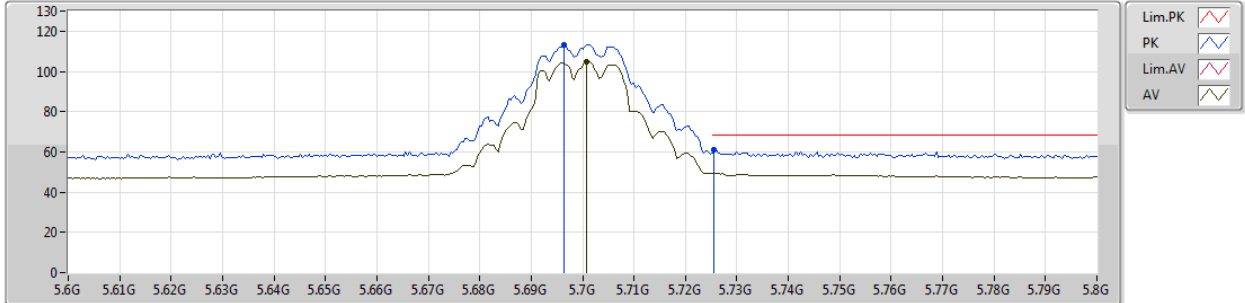
Type	Freq (Hz)	Level (dBuV/m)	Limit (dBuV/m)	Margin (dB)	Factor (dB)	Dist (m)	Condition	Azimuth (°)	Height (m)	Comments
AV	5.6984G	108.61	Inf	-Inf	4.63	3	Vertical	26	1.01	-
PK	5.6984G	117.24	Inf	-Inf	4.63	3	Vertical	26	1.01	-
PK	5.7324G	61.60	68.20	-6.60	4.68	3	Vertical	26	1.01	-



802.11a\_Nss1,(6Mbps)\_2TX

06/10/2018

5700MHz\_TX



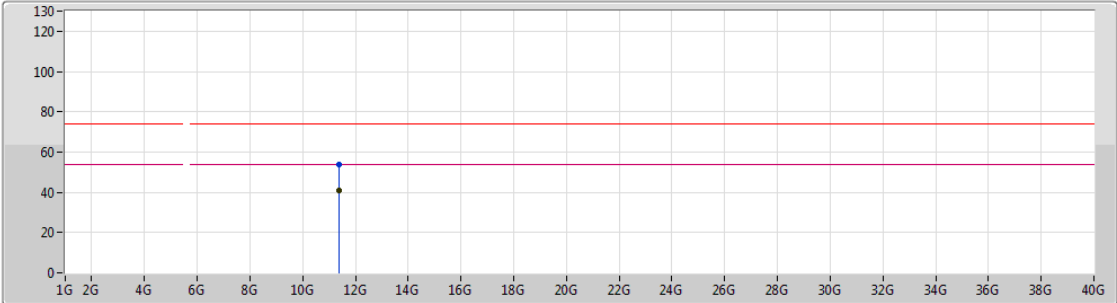
Type	Freq (Hz)	Level (dBuV/m)	Limit (dBuV/m)	Margin (dB)	Factor (dB)	Dist (m)	Condition	Azimuth (°)	Height (m)	Comments
AV	5.7008G	104.97	Inf	-Inf	4.75	3	Horizontal	42	2.54	-
PK	5.6964G	113.14	Inf	-Inf	4.74	3	Horizontal	42	2.54	-
PK	5.7256G	61.08	68.20	-7.12	4.79	3	Horizontal	42	2.54	-



802.11a\_Nss1,(6Mbps)\_2TX

09/10/2018

5700MHz\_TX



Lim.PK  
 PK  
 Lim.AV  
 AV

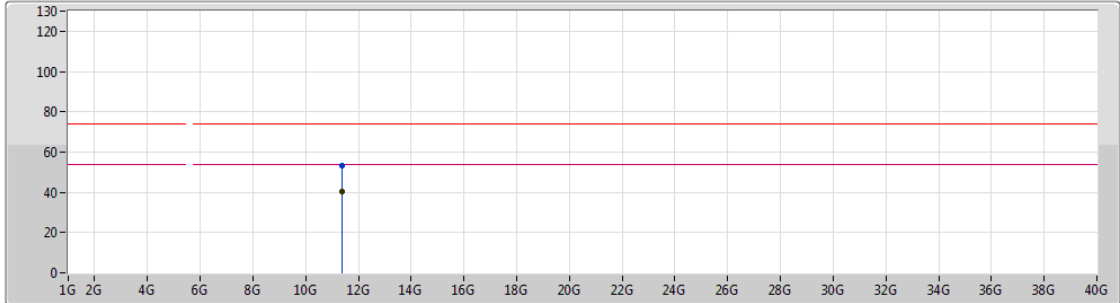
Type	Freq (Hz)	Level (dBuV/m)	Limit (dBuV/m)	Margin (dB)	Factor (dB)	Dist (m)	Condition	Azimuth (°)	Height (m)	Comments
AV	11.3988G	40.73	54.00	-13.27	13.66	3	Vertical	163	2.01	-
PK	11.3976G	53.89	74.00	-20.11	13.66	3	Vertical	163	2.01	-



802.11a\_Nss1,(6Mbps)\_2TX

09/10/2018

5700MHz\_TX



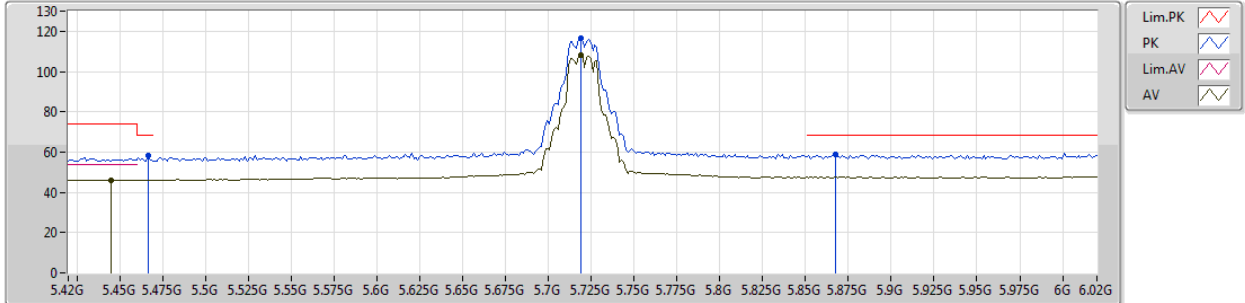
Lim.PK    
 PK    
 Lim.AV    
 AV

Type	Freq (Hz)	Level (dBuV/m)	Limit (dBuV/m)	Margin (dB)	Factor (dB)	Dist (m)	Condition	Azimuth (°)	Height (m)	Comments
AV	11.3913G	40.59	54.00	-13.41	13.66	3	Horizontal	196	1.87	-
PK	11.39754G	53.16	74.00	-20.84	13.66	3	Horizontal	196	1.87	-

802.11a\_Nss1,(6Mbps)\_2TX

06/10/2018

5720MHz Straddle 5.47-5.725GHz\_TX

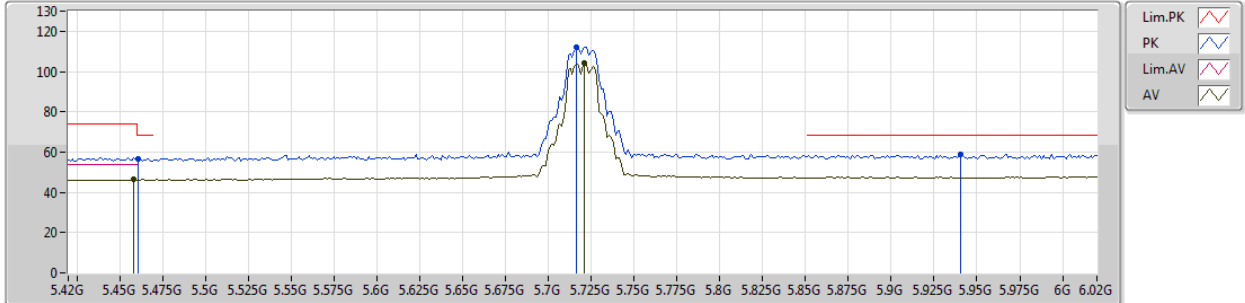


Type	Freq (Hz)	Level (dBuV/m)	Limit (dBuV/m)	Margin (dB)	Factor (dB)	Dist (m)	Condition	Azimuth (°)	Height (m)	Comments
AV	5.4452G	46.17	54.00	-7.83	4.22	3	Vertical	23	1.04	-
AV	5.7188G	108.27	Inf	-Inf	4.67	3	Vertical	23	1.04	-
PK	5.4668G	58.52	68.20	-9.68	4.26	3	Vertical	23	1.04	-
PK	5.7188G	116.43	Inf	-Inf	4.67	3	Vertical	23	1.04	-
PK	5.8676G	59.10	68.20	-9.10	4.89	3	Vertical	23	1.04	-

802.11a\_Nss1,(6Mbps)\_2TX

06/10/2018

5720MHz Straddle 5.47-5.725GHz\_TX



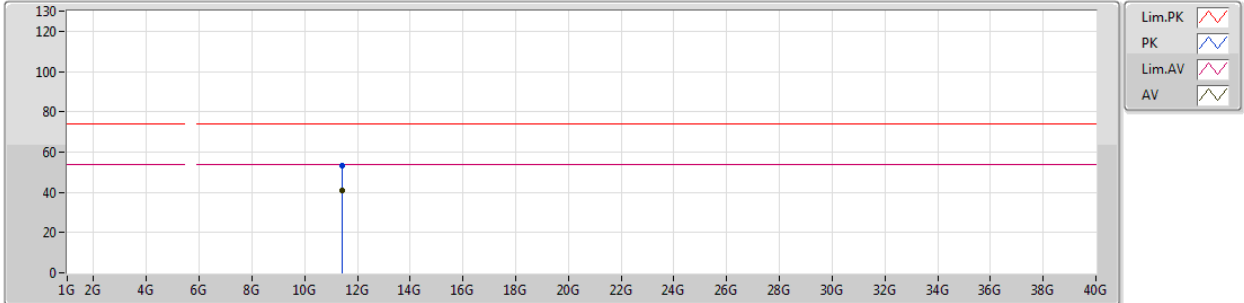
Type	Freq (Hz)	Level (dBuV/m)	Limit (dBuV/m)	Margin (dB)	Factor (dB)	Dist (m)	Condition	Azimuth (°)	Height (m)	Comments
AV	5.4584G	46.23	54.00	-7.77	4.36	3	Horizontal	39	2.57	-
AV	5.7212G	104.31	Inf	-Inf	4.79	3	Horizontal	39	2.57	-
PK	5.4608G	56.70	68.20	-11.50	4.36	3	Horizontal	39	2.57	-
PK	5.7164G	112.07	Inf	-Inf	4.78	3	Horizontal	39	2.57	-
PK	5.9408G	58.84	68.20	-9.36	5.14	3	Horizontal	39	2.57	-



802.11a\_Nss1,(6Mbps)\_2TX

09/10/2018

5720MHz Straddle 5.47-5.725GHz\_TX



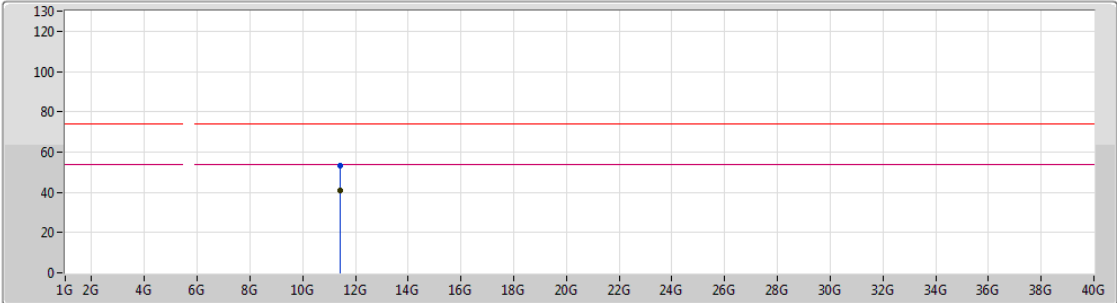
Type	Freq (Hz)	Level (dBuV/m)	Limit (dBuV/m)	Margin (dB)	Factor (dB)	Dist (m)	Condition	Azimuth (°)	Height (m)	Comments
AV	11.43598G	40.68	54.00	-13.32	13.63	3	Vertical	217	1.50	-
PK	11.44216G	53.47	74.00	-20.53	13.62	3	Vertical	217	1.50	-



802.11a\_Nss1,(6Mbps)\_2TX

09/10/2018

5720MHz Straddle 5.47-5.725GHz\_TX



Legend for plot:

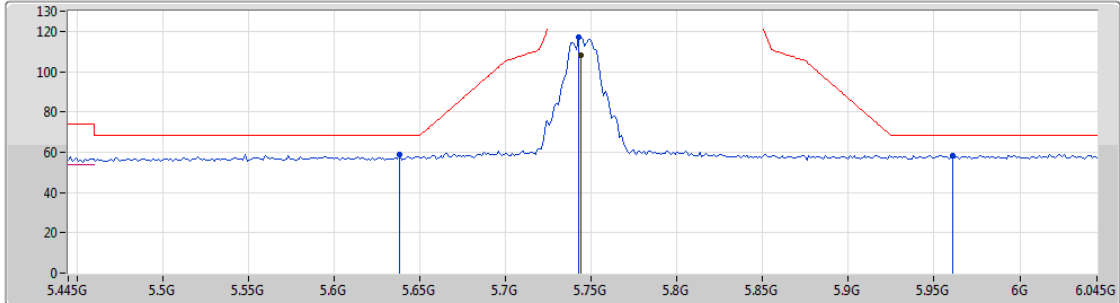
- Lim.PK
- PK
- Lim.AV
- AV





Type	Freq (Hz)	Level (dBuV/m)	Limit (dBuV/m)	Margin (dB)	Factor (dB)	Dist (m)	Condition	Azimuth (°)	Height (m)	Comments
AV	11.43388G	40.73	54.00	-13.27	13.63	3	Horizontal	232	1.45	-
PK	11.42878G	53.45	74.00	-20.55	13.63	3	Horizontal	232	1.45	-

802.11a\_Nss1,(6Mbps)\_2TX

06/10/2018

5745MHz\_TX



Lim.PK    
 PK    
 Lim.AV    
 AV  

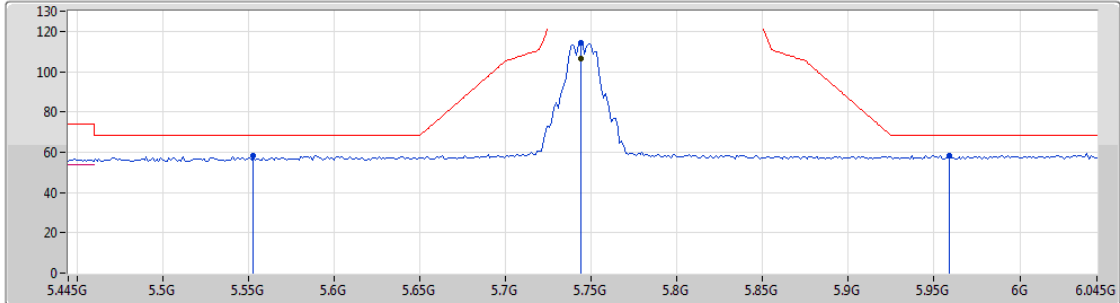
Type	Freq (Hz)	Level (dBuV/m)	Limit (dBuV/m)	Margin (dB)	Factor (dB)	Dist (m)	Condition	Azimuth (°)	Height (m)	Comments
AV	5.7438G	108.31	Inf	-Inf	4.70	3	Vertical	20	1.01	-
PK	5.6382G	58.85	68.20	-9.35	4.53	3	Vertical	20	1.01	-
PK	5.7426G	116.86	Inf	-Inf	4.70	3	Vertical	20	1.01	-
PK	5.961G	58.26	68.20	-9.94	5.04	3	Vertical	20	1.01	-







802.11a\_Nss1,(6Mbps)\_2TX

06/10/2018

5745MHz\_TX



Lim.PK    
 PK    
 Lim.AV    
 AV  

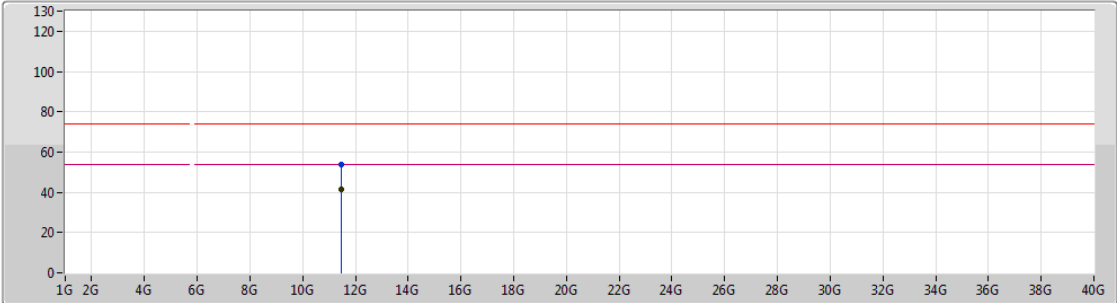
Type	Freq (Hz)	Level (dBuV/m)	Limit (dBuV/m)	Margin (dB)	Factor (dB)	Dist (m)	Condition	Azimuth (°)	Height (m)	Comments
AV	5.7438G	106.48	Inf	-Inf	4.70	3	Horizontal	25	3.01	-
PK	5.553G	58.02	68.20	-10.18	4.39	3	Horizontal	25	3.01	-
PK	5.7438G	114.52	Inf	-Inf	4.70	3	Horizontal	25	3.01	-
PK	5.9586G	58.50	68.20	-9.70	5.03	3	Horizontal	25	3.01	-



802.11a\_Nss1,(6Mbps)\_2TX

09/10/2018

5745MHz\_TX



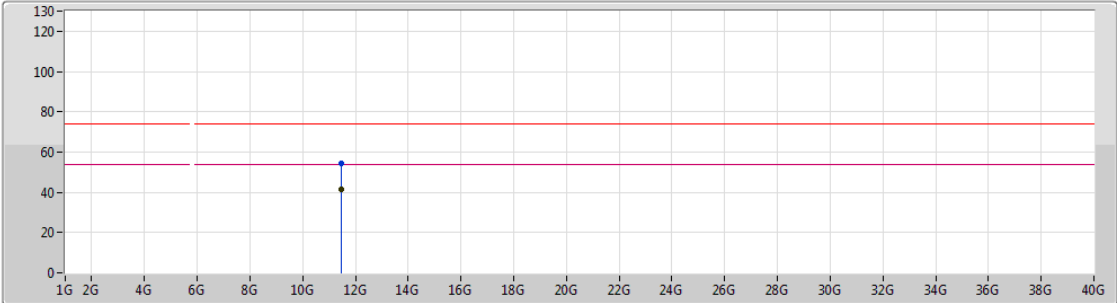
Type	Freq (Hz)	Level (dBuV/m)	Limit (dBuV/m)	Margin (dB)	Factor (dB)	Dist (m)	Condition	Azimuth (°)	Height (m)	Comments
AV	11.48544G	41.51	54.00	-12.49	15.87	3	Vertical	360	2.88	-
PK	11.48178G	54.05	74.00	-19.95	15.88	3	Vertical	360	2.88	-



802.11a\_Nss1,(6Mbps)\_2TX

09/10/2018

5745MHz\_TX



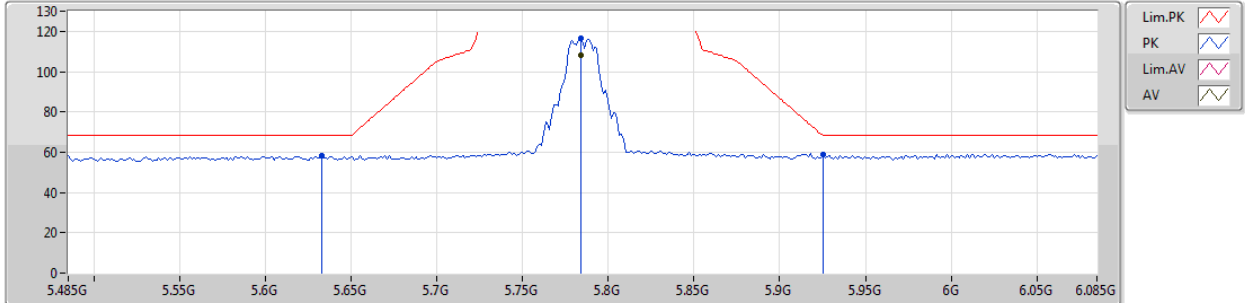
Lim.PK  
 PK  
 Lim.AV  
 AV

Type	Freq (Hz)	Level (dBuV/m)	Limit (dBuV/m)	Margin (dB)	Factor (dB)	Dist (m)	Condition	Azimuth (°)	Height (m)	Comments
AV	11.4774G	41.67	54.00	-12.33	15.88	3	Horizontal	256	1.50	-
PK	11.48484G	54.62	74.00	-19.38	15.87	3	Horizontal	256	1.50	-

802.11a\_Nss1,(6Mbps)\_2TX

06/10/2018

5785MHz\_TX

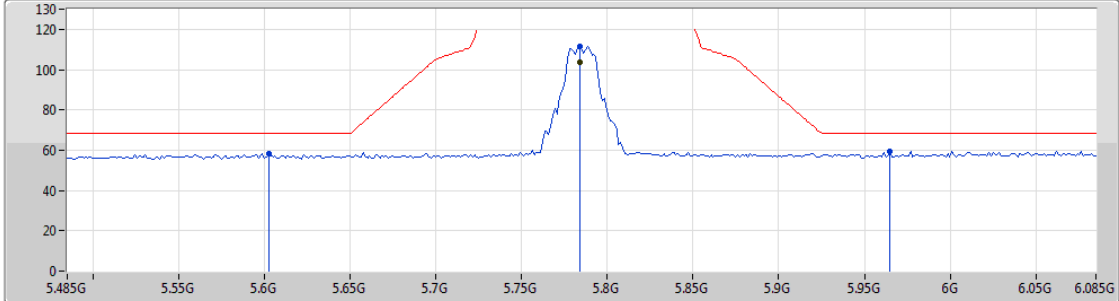






Type	Freq (Hz)	Level (dBuV/m)	Limit (dBuV/m)	Margin (dB)	Factor (dB)	Dist (m)	Condition	Azimuth (°)	Height (m)	Comments
AV	5.7838G	108.23	Inf	-Inf	4.76	3	Vertical	22	1.00	-
PK	5.6326G	58.23	68.20	-9.97	4.53	3	Vertical	22	1.00	-
PK	5.7838G	116.34	Inf	-Inf	4.76	3	Vertical	22	1.00	-
PK	5.9254G	58.68	68.20	-9.52	4.99	3	Vertical	22	1.00	-

802.11a\_Nss1,(6Mbps)\_2TX

06/10/2018

5785MHz\_TX



Lim.PK    
 PK    
 Lim.AV    
 AV  

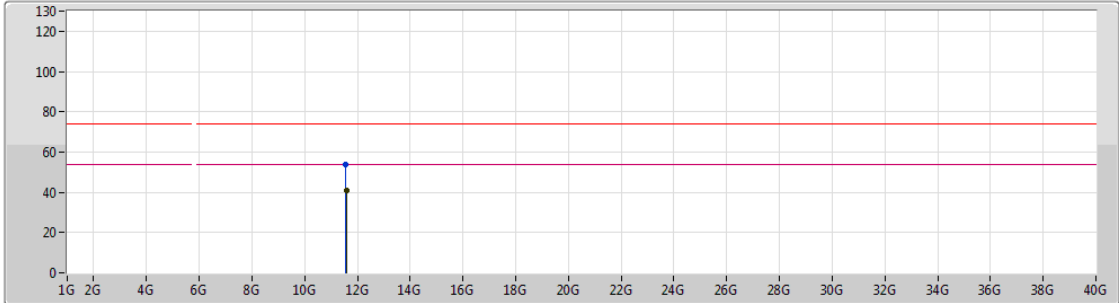
Type	Freq (Hz)	Level (dBuV/m)	Limit (dBuV/m)	Margin (dB)	Factor (dB)	Dist (m)	Condition	Azimuth (°)	Height (m)	Comments
AV	5.7838G	103.46	Inf	-Inf	4.76	3	Horizontal	53	2.54	-
PK	5.6026G	58.13	68.20	-10.07	4.47	3	Horizontal	53	2.54	-
PK	5.7838G	111.74	Inf	-Inf	4.76	3	Horizontal	53	2.54	-
PK	5.965G	59.31	68.20	-8.89	5.05	3	Horizontal	53	2.54	-



802.11a\_Nss1,(6Mbps)\_2TX

09/10/2018

5785MHz\_TX



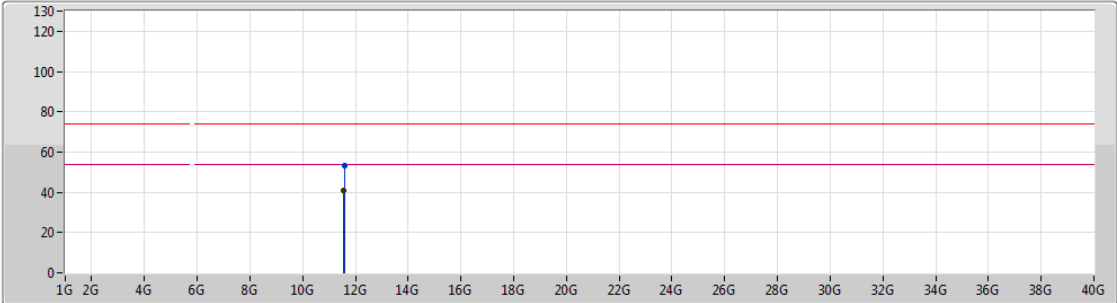
Type	Freq (Hz)	Level (dBuV/m)	Limit (dBuV/m)	Margin (dB)	Factor (dB)	Dist (m)	Condition	Azimuth (°)	Height (m)	Comments
AV	11.5754G	40.67	54.00	-13.33	13.50	3	Vertical	288	1.56	-
PK	11.55812G	53.53	74.00	-20.47	13.52	3	Vertical	288	1.56	-



802.11a\_Nss1,(6Mbps)\_2TX

09/10/2018

5785MHz\_TX



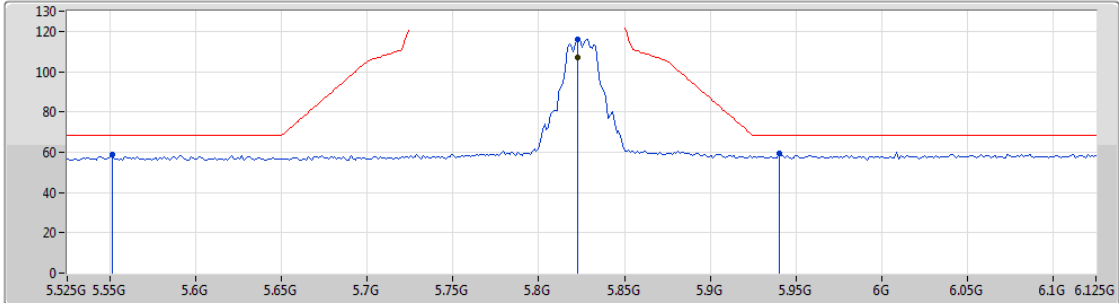
Lim.PK  
 PK  
 Lim.AV  
 AV





Type	Freq (Hz)	Level (dBuV/m)	Limit (dBuV/m)	Margin (dB)	Factor (dB)	Dist (m)	Condition	Azimuth (°)	Height (m)	Comments
AV	11.57114G	40.73	54.00	-13.27	13.51	3	Horizontal	260	2.26	-
PK	11.5826G	53.35	74.00	-20.65	13.49	3	Horizontal	260	2.26	-

802.11a\_Nss1,(6Mbps)\_2TX

06/10/2018

5825MHz\_TX



Lim.PK    
 PK    
 Lim.AV    
 AV  

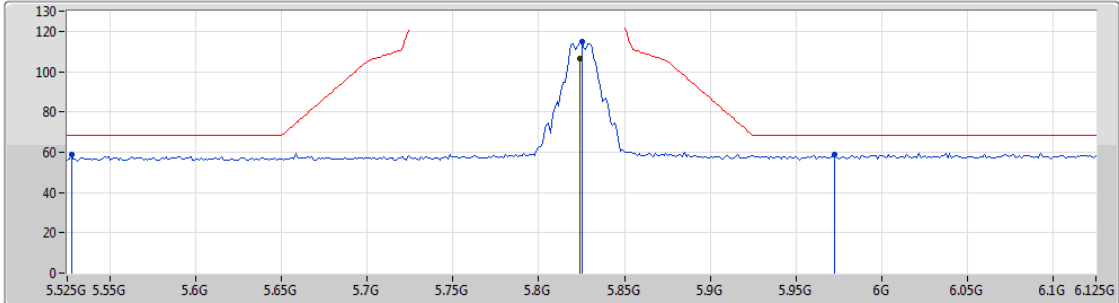
Type	Freq (Hz)	Level (dBuV/m)	Limit (dBuV/m)	Margin (dB)	Factor (dB)	Dist (m)	Condition	Azimuth (°)	Height (m)	Comments
AV	5.8226G	107.20	Inf	-Inf	4.82	3	Vertical	25	1.02	-
PK	5.5514G	58.79	68.20	-9.41	4.39	3	Vertical	25	1.02	-
PK	5.8226G	116.20	Inf	-Inf	4.82	3	Vertical	25	1.02	-
PK	5.9402G	59.33	68.20	-8.87	5.02	3	Vertical	25	1.02	-







802.11a\_Nss1,(6Mbps)\_2TX

06/10/2018

5825MHz\_TX



Lim.PK    
 PK    
 Lim.AV    
 AV  

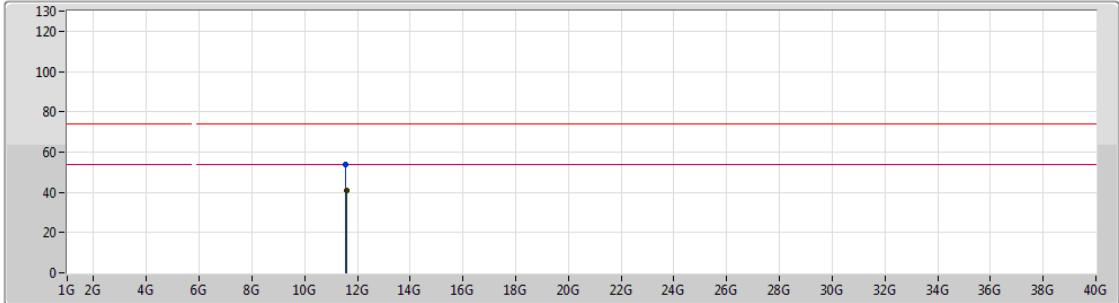
Type	Freq (Hz)	Level (dBuV/m)	Limit (dBuV/m)	Margin (dB)	Factor (dB)	Dist (m)	Condition	Azimuth (°)	Height (m)	Comments
AV	5.8238G	106.53	Inf	-Inf	4.82	3	Horizontal	20	3.19	-
PK	5.5274G	58.64	68.20	-9.56	4.36	3	Horizontal	20	3.19	-
PK	5.825G	114.67	Inf	-Inf	4.82	3	Horizontal	20	3.19	-
PK	5.9726G	58.69	68.20	-9.51	5.06	3	Horizontal	20	3.19	-



802.11a\_Nss1,(6Mbps)\_2TX

09/10/2018

5825MHz\_TX



Lim.PK  
 PK  
 Lim.AV  
 AV

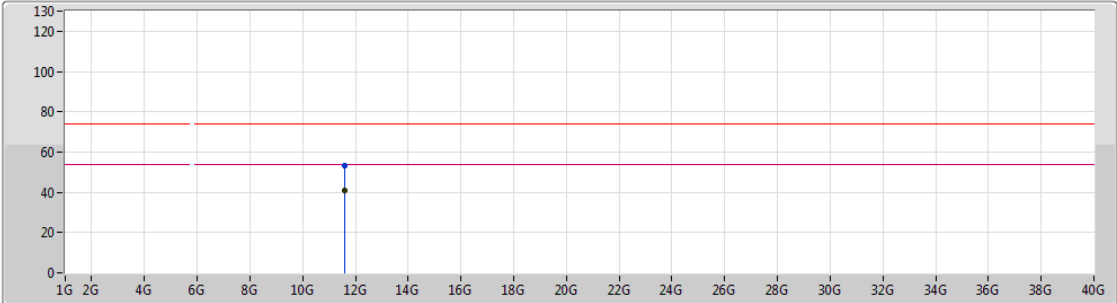
Type	Freq (Hz)	Level (dBuV/m)	Limit (dBuV/m)	Margin (dB)	Factor (dB)	Dist (m)	Condition	Azimuth (°)	Height (m)	Comments
AV	11.58086G	40.68	54.00	-13.32	13.50	3	Vertical	342	1.50	-
PK	11.5646G	53.70	74.00	-20.30	13.51	3	Vertical	342	1.50	-



802.11a\_Nss1,(6Mbps)\_2TX

09/10/2018

5825MHz\_TX

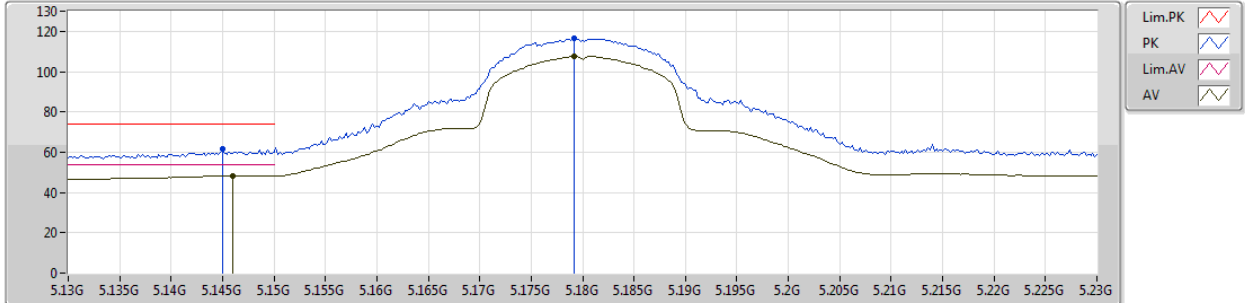


Type	Freq (Hz)	Level (dBuV/m)	Limit (dBuV/m)	Margin (dB)	Factor (dB)	Dist (m)	Condition	Azimuth (°)	Height (m)	Comments
AV	11.57282G	40.73	54.00	-13.27	13.51	3	Horizontal	315	1.66	-
PK	11.58038G	53.25	74.00	-20.75	13.50	3	Horizontal	315	1.66	-

802.11ac VHT20\_Nss1,(MCS0)\_2TX

07/10/2018

5180MHz\_TX

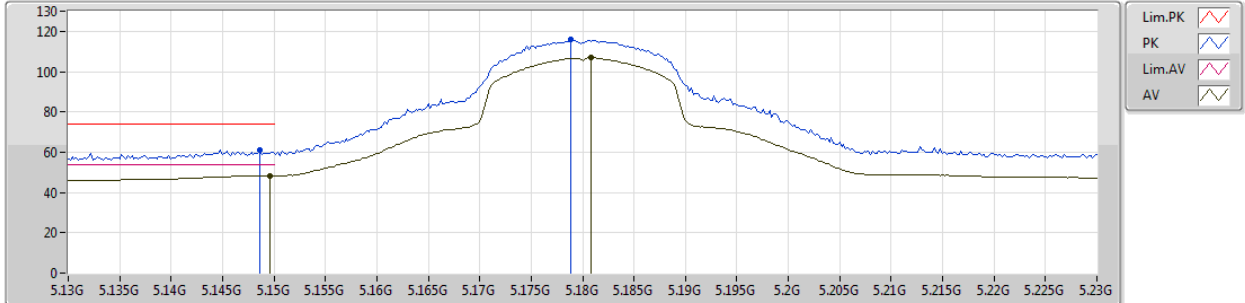


Type	Freq (Hz)	Level (dBuV/m)	Limit (dBuV/m)	Margin (dB)	Factor (dB)	Dist (m)	Condition	Azimuth (°)	Height (m)	Comments
AV	5.146G	48.35	54.00	-5.65	3.68	3	Vertical	0	1.01	-
AV	5.1792G	107.47	Inf	-Inf	3.74	3	Vertical	0	1.01	-
PK	5.145G	61.41	74.00	-12.59	3.67	3	Vertical	0	1.01	-
PK	5.1792G	116.48	Inf	-Inf	3.74	3	Vertical	0	1.01	-

802.11ac VHT20\_Nss1,(MCS0)\_2TX

07/10/2018

5180MHz\_TX



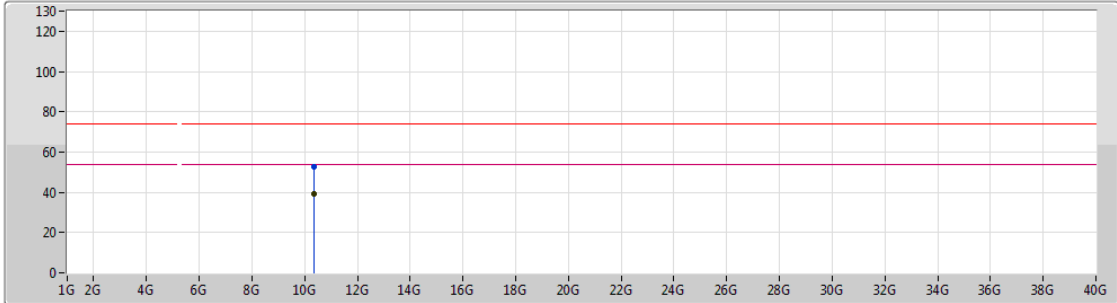
Type	Freq (Hz)	Level (dBuV/m)	Limit (dBuV/m)	Margin (dB)	Factor (dB)	Dist (m)	Condition	Azimuth (°)	Height (m)	Comments
AV	5.1496G	48.08	54.00	-5.92	3.68	3	Horizontal	10	2.95	-
AV	5.1808G	106.78	Inf	-Inf	3.74	3	Horizontal	10	2.95	-
PK	5.1486G	61.14	74.00	-12.86	3.68	3	Horizontal	10	2.95	-
PK	5.1788G	115.88	Inf	-Inf	3.73	3	Horizontal	10	2.95	-



802.11ac VHT20\_Nss1,(MCS0)\_2TX

09/10/2018

5180MHz\_TX



Lim.PK    
 PK    
 Lim.AV    
 AV

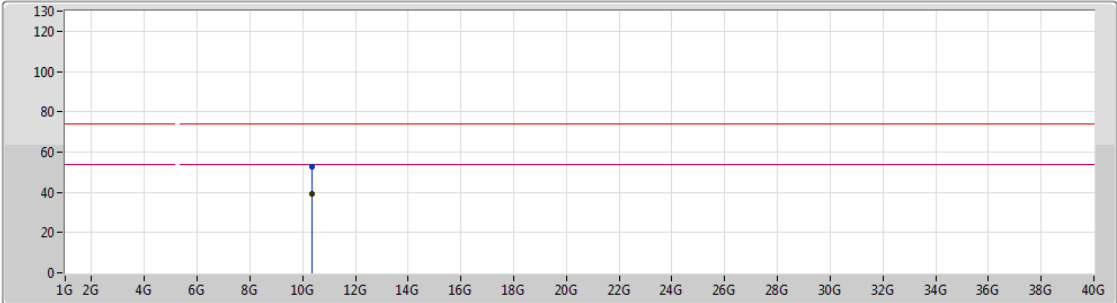
Type	Freq (Hz)	Level (dBuV/m)	Limit (dBuV/m)	Margin (dB)	Factor (dB)	Dist (m)	Condition	Azimuth (°)	Height (m)	Comments
AV	10.37452G	39.25	54.00	-14.75	12.66	3	Vertical	108	1.50	-
PK	10.35406G	52.93	74.00	-21.07	12.63	3	Vertical	108	1.50	-



802.11ac VHT20\_Nss1,(MCS0)\_2TX

09/10/2018

5180MHz\_TX



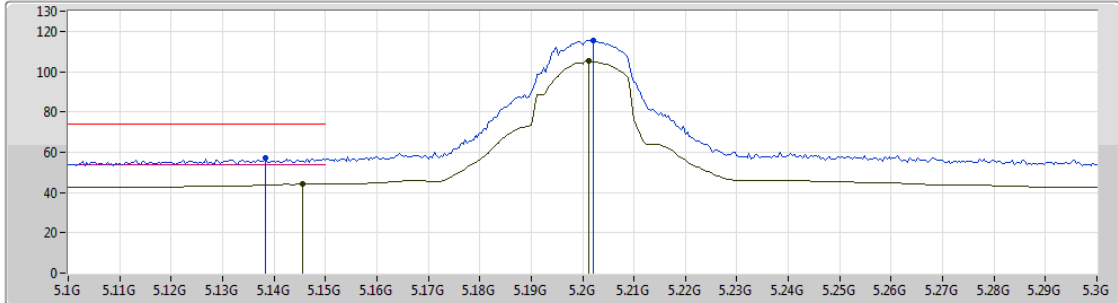
Lim.PK    
 PK    
 Lim.AV    
 AV

Type	Freq (Hz)	Level (dBuV/m)	Limit (dBuV/m)	Margin (dB)	Factor (dB)	Dist (m)	Condition	Azimuth (°)	Height (m)	Comments
AV	10.37392G	39.24	54.00	-14.76	12.66	3	Horizontal	198	1.25	-
PK	10.34764G	52.94	74.00	-21.06	12.61	3	Horizontal	198	1.25	-

802.11ac VHT20\_Nss1,(MCS0)\_2TX

08/10/2018

5200MHz\_TX



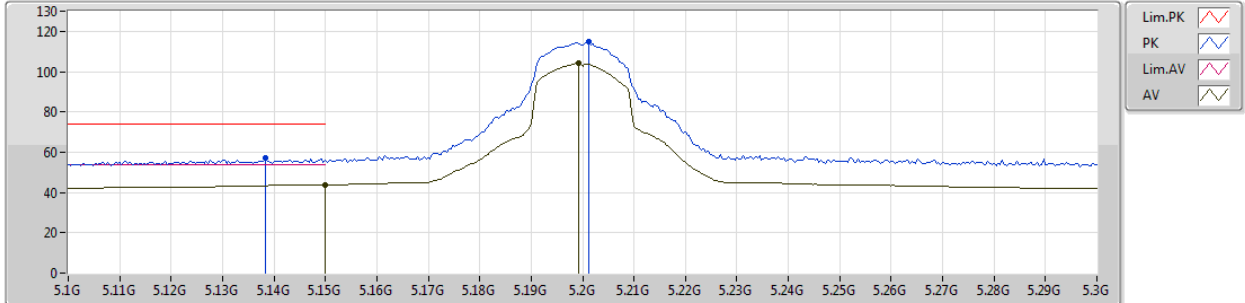
Type	Freq (Hz)	Level (dBuV/m)	Limit (dBuV/m)	Margin (dB)	Factor (dB)	Dist (m)	Condition	Azimuth (°)	Height (m)	Comments
AV	5.1456G	44.19	54.00	-9.81	2.74	3	Vertical	356	1.01	-
AV	5.2012G	105.13	Inf	-Inf	2.80	3	Vertical	356	1.01	-
PK	5.1384G	57.22	74.00	-16.78	2.73	3	Vertical	356	1.01	-
PK	5.202G	115.64	Inf	-Inf	2.80	3	Vertical	356	1.01	-



802.11ac VHT20\_Nss1,(MCS0)\_2TX

08/10/2018

5200MHz\_TX



Type	Freq (Hz)	Level (dBuV/m)	Limit (dBuV/m)	Margin (dB)	Factor (dB)	Dist (m)	Condition	Azimuth (°)	Height (m)	Comments
AV	5.15G	43.85	54.00	-10.15	2.74	3	Horizontal	7	2.92	-
AV	5.1992G	104.04	Inf	-Inf	2.80	3	Horizontal	7	2.92	-
PK	5.1384G	56.89	74.00	-17.11	2.73	3	Horizontal	7	2.92	-
PK	5.2012G	114.91	Inf	-Inf	2.80	3	Horizontal	7	2.92	-