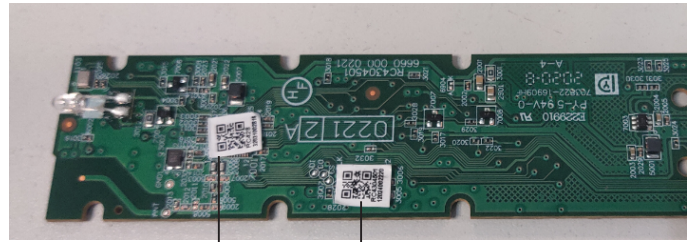
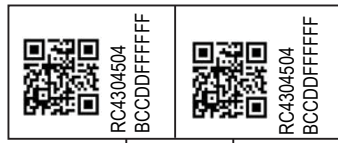


1, TRACEABILITY LABEL (6630 000 0248X 20*8mm)

2D code type: QR code

2D code content: RC4304504

BCCDDFFFFFFF



2, FACTORY PLATE (3139 225 5089X 20*7.5mm)

USE 6630 000 01041 RICOH RIBBON TO PRINT THIS LABEL

PRODUCTS VERSION -REFER TO BELLOW TABLE
(FILLED BY PRODUCTION)

STICK IN THE BATTERY COMPARTMENT

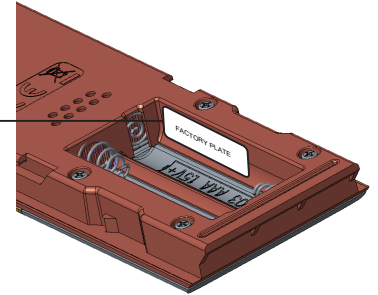
SOFTWARE
NAME & VERSION
(FILLED BY MANUFACTORY)

RC4304504/01RP GGG
398GM08BEPHN0001PH
MADE IN XXXX
SW: XX.XX YYYY/MM/DD
AA ZZ BCCDD E FFFFFFFF

COUNTRY OF ORIGIN
(FILLED BY MANUFACTORY)

MANUFACTURE DATE
(FILLED BY MANUFACTORY)

PRODUCTION CODE -REFER TO BELLOW TABLE
(FILLED BY MANUFACTORY)



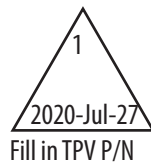
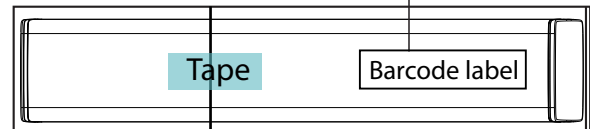
3, BARCODE LABEL (3139 235 5135X 76*20mm)

BARCODE TYPE: CODE 128



Stick on bag (no recycle logo side)

YY: year of production
WW: week of production
XXXXXX: from 000001~999999



AA	Production site, CP = CBET, CF = Funide, CKH=HANA, CSS=Simand
ZZ	Factory change code or version nbr (follow version management procedure) 01 = 1 st version PCB assy point 1; 09 = 1 st version PCB assy point 9 11 = 2 nd version PCB assy point 1; 19 = 2 nd version PCB assy point 9 Maximum to 9 version PCB assy and point 9
B	Production day code, 1 = Monday, 2 = Tuesday, ... so on.
CC	Production year code, 00 = 2000, 01 = 2001, so on
DD	Production week code, 01 = week 1, 02= week 2, ... until 52 = week 52
E	Production shift, 0 = no need indication, A = normal or 1 st shift, B = 2 nd shift, C = 3 rd shift
FFFFFFF	Serial No. starts from 000001 AND renew every new production lot
GGG	S, PTR, TR, CO S = Sample; PTR = Pre-Trial Run; TR = Trial Run CO = Concession Order (same meaning as Risk Order)

LABEL INSTRUCTION
RC4304504/01RP

3139 238 3942

1	2020-Jul-27 dy
1	2020-Aug-18 dy
1	2020-Oct-12 dy




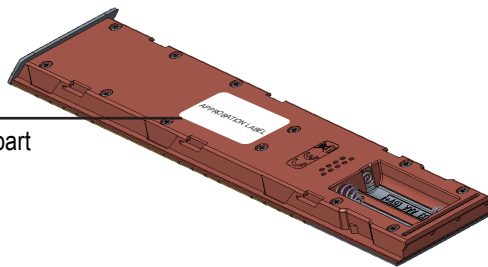
ALL RIGHTS ARE RESERVED. REPRODUCTION IN WHOLE OR IN PART IS PROHIBITED WITHOUT THE WRITTEN CONSENT OF THE COPYRIGHT OWNER.

CONFIDENTIAL

4, APPROBATION LABEL (3139 235 5072X 40*23mm)
 Use 6630 000 01041_RICOH ribbon to print this label.
 Font: Arial narrow 7 pt (FCC ID: 2AGOFRC430A)
 Others-Arial narrow 5 pt

This device complies with Part 15 of the FCC Rules.
 Operation is subject to the following two conditions:
 (1) this device may not cause harmful interference, and
 (2) this device must accept any interference received,
 including interference that may cause undesired operation.

 FCC ID: 2AGOFRC430A



Stick on bottom part



1, Add approbation label
 2, Modify some pictures



Modify approbation label

5, PHOTO LABEL (3139 235 5438X 80*50mm)

RC4304504/01RP
 3139 238 39421
 MADE IN XXXXX
 398GM08BEPHN0001PH
 78 PCS
 AA : BCCDD
 LOT NO:XXXXXX CTN: XXX/XXX
 GROSS WEIGHT: XX.XX KG
 NET WEIGHT: XX.XX KG

14
 堆码层数极限

RoHS2

SYMBOL HEIGHT ≥15mm
 STICK ON CARTON

COUNTRY OF ORIGIN
 (FILLED BY MANUFACTORY)

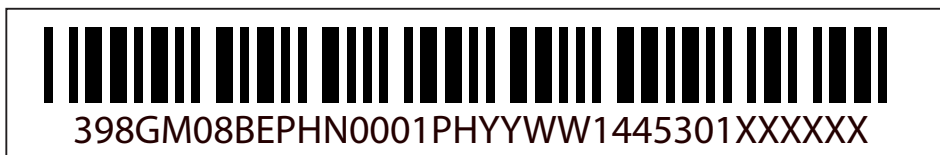
PRODUCTION CODE -REFER TO BELLOW TABLE
 (FILLED BY MANUFACTORY)

CARTON NUMBER.
 (FILLED BY MANUFACTORY)

ACTUAL WEIGHT
 (FILLED BY MANUFACTORY)

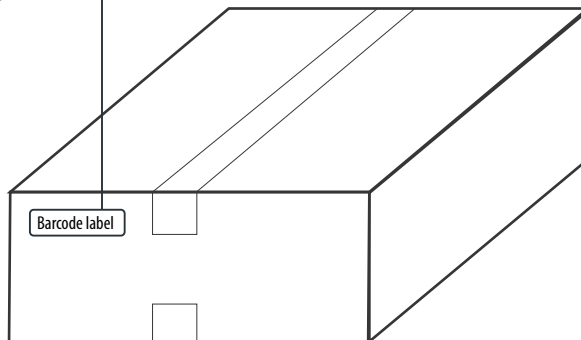
LOT NUMBER.
 (FILLED BY MANUFACTORY)

6, BARCODE LABEL ON CARTON (3139 235 5217X 125*20MM)
 BARCODE TYPE: CODE 128



YY: year of production
 WW: week of production
 Supplier code: 1445301
 XXXXXX: from 000001~999999

STICK ON CARTON



ALL RIGHTS ARE RESERVED. REPRODUCTION IN WHOLE OR IN PART IS PROHIBITED WITHOUT THE WRITTEN CONSENT OF THE COPYRIGHT OWNER.

CONFIDENTIAL

LABEL INSTRUCTION
RC4304504/01RP

3139 238 3942

1	2020-Jul-27 dy
1	2020-Aug-18 dy
1	2020-Oct-12 dy
.	.