

1, TRACEABILITY LABEL (6630 000 0248X 20\*8mm)

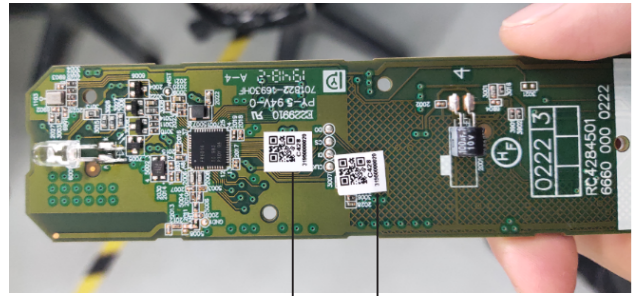
2D code type: QR code

2D code content: RC4284504

YYFFFFFFF

YY: Year code, example 21 indicate year 2021

FFFFFFF: from 00000001-99999999

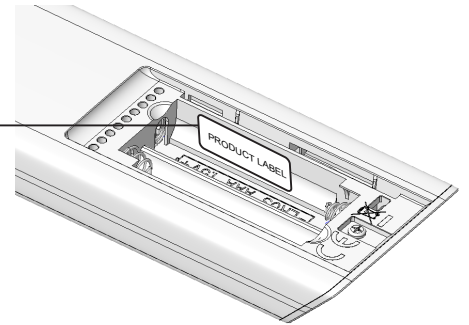
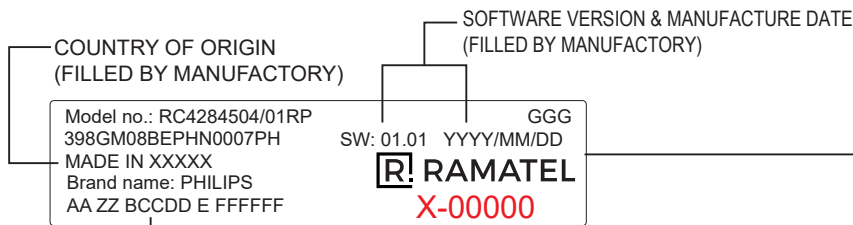


2, Product label

Blank label & size: 6630 000 00021(30\*7mm)

USE 6630 000 01041 RICOH RIBBON TO PRINT THIS LABEL

Font: Refor to the illustration



PRODUCTION CODE -REFER TO BELLOW TABLE (FILLED BY MANUFACTORY)

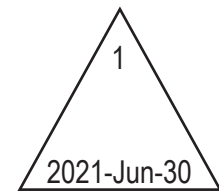
Min height 2mm ----- **RAMATEL**

Arial Regular 5pt ----- **X-00000**

Arial Regular 3pt ----- Model no.: RC4284504/01RP GGG  
398GM08BEPHN0007PH SW: 01.01 YYYY/MM/DD  
MADE IN XXXXX  
Brand name: PHILIPS  
AA ZZ BCCDD E FFFFFFF



Product label update



Fill in software version

AA	Production site, BS = Batam, CS = Suzhou, CP = CBET, CF = Funide, CKH=HANA
ZZ	Factory change code or version nbr (follow version management procedure) 01 = 1 <sup>st</sup> version PCB assy point 1; 09 = 1 <sup>st</sup> version PCB assy point 9 11 = 2 <sup>nd</sup> version PCB assy point 1; 19 = 2 <sup>nd</sup> version PCB assy point 9 Maximum to 9 version PCB assy and point 9
B	Production day code, 1 = Monday, 2 = Tuesday, ... so on.
CC	Production year code, 00 = 2000, 01 = 2001, .... so on
DD	Production week code, 01 = week 1, 02= week 2, ... until 52 = week 52
E	Production shift, 0 = no need indication, A = normal or 1 <sup>st</sup> shift, B = 2 <sup>nd</sup> shift, C = 3 <sup>rd</sup> shift
FFFFFF	Serial No. starts from 000001 AND renew every new production lot
GGG	S , PTR, TR, CO S = Sample ; PTR = Pre-Trial Run ; TR = Trial Run CO = Concession Order (same meaning as Risk Order)

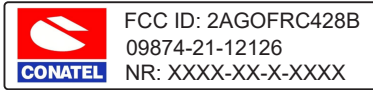
**LABEL INSTRUCTION**  
**RC4284504/01RP**

**3139 238 4042**

1	2021-Jun-30 dy
1	2021-Aug-16 dy
1	2021-Sep-06 dy



3, FCC+ANNATEL LABEL  
6630 000 XXXXX(30\*7mm)



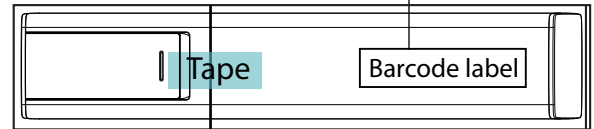
Add FCC+ANNATEL Label

4, BARCODE LABEL (3139 235 5135X 76\*20mm)  
BARCODE TYPE: CODE 128



Stick on bag(no recycle logo side)

YY: year of production  
WW: week of production  
XXXXXX: from 000001~999999



5, PHOTO LABEL (3139 235 5438X 80\*50mm)

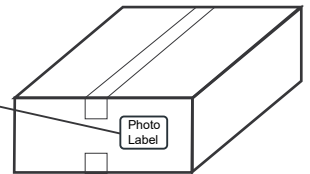
RC4284504/01RP  
3139 238 40421  
MADE IN XXXXX  
398GM08BEPHN0007PH  
78 PCS  
AA : BCCDD  
LOT NO:XXXXXX CTN: XXX/XXX  
GROSS WEIGHT: XX.XX KG  
NET WEIGHT: XX.XX KG

14  
堆码层数极限

RoHS2

SYMBOL HEIGHT ≥15mm

STICK ON CARTON



COUNTRY OF ORIGIN  
(FILLED BY MANUFACTORY)

PRODUCTION CODE -REFER TO BELLOW TABLE  
(FILLED BY MANUFACTORY)

CARTON NUMBER.  
(FILLED BY MANUFACTORY)

ACTUAL WEIGHT  
(FILLED BY MANUFACTORY)

LOT NUMBER.  
(FILLED BY MANUFACTORY)

**LABEL INSTRUCTION**  
**RC4284504/01RP**

**3139 238 4042**

1	2021-Jun-30 dy
1	2021-Aug-16 dy
1	2021-Sep-06 dy



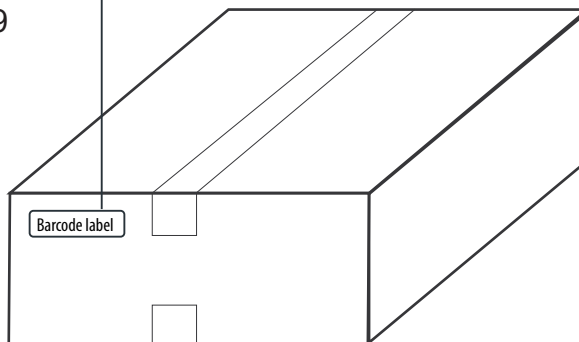
6, BARCODE LABEL ON CARTON (3139 235 5217X 125\*20MM)  
BARCODE TYPE: CODE 128



398GM08BEPHN0007PHYWW1445301XXXXXX

YY: year of production  
WW: week of production  
Supplier code: 1445301  
XXXXXX: from 000001~999999

STICK ON CARTON



ALL RIGHTS ARE RESERVED. REPRODUCTION IN WHOLE OR IN PART IS PROHIBITED WITHOUT THE WRITTEN CONSENT OF THE COPYRIGHT OWNER.



**CONFIDENTIAL**

**LABEL INSTRUCTION**  
**RC4284504/01RP**

**3139 238 4042**

1	2021-Jun-30 dy
1	2021-Aug-16 dy
1	2021-Sep-06 dy