



Annex A: System Check

Tested Model : S8

**Report Number:
FCC17040287A-5**

I. RESULTS

<u>TYPE</u>	<u>BAND</u>	<u>PARAMETERS</u>
Validation	CW2450	Measurement 1: Validation Plane with Dipole device position on Middle Channel in CW mode

MEASUREMENT 1

BODY

Type: Validation measurement (Complete)

Date of measurement: 9/5/2017

Measurement duration: 9 minutes 46 seconds

A. Experimental conditions.

<u>Area Scan</u>	<u>dx=15mm dy=15mm</u>
<u>ZoomScan</u>	<u>5x5x7, dx=8mm dy=8mm dz=5mm, Complete</u>
<u>Phantom</u>	<u>Validation plane</u>
<u>Device Position</u>	<u>Dipole</u>
<u>Band</u>	<u>CW2450</u>
<u>Channels</u>	<u>Middle</u>
<u>Signal</u>	<u>CW (Crest factor: 1.0)</u>

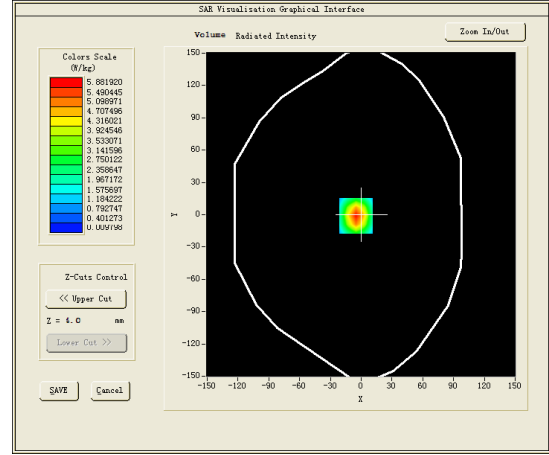
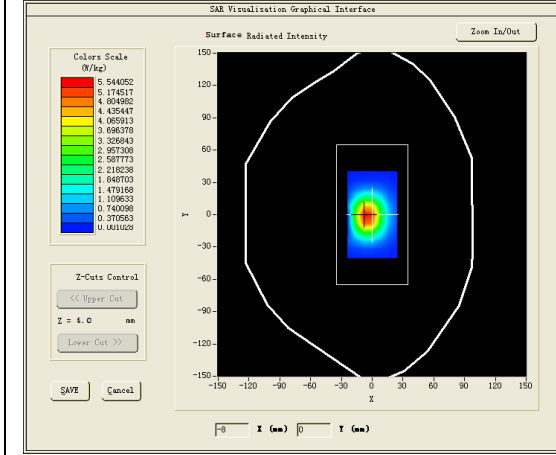
B. SAR Measurement Results

Middle Band SAR (Channel -1):

Frequency (MHz)	2450.000000
Relative permittivity (real part)	52.735699
Relative permittivity (imaginary part)	14.017300
Conductivity (S/m)	1.907910
Variation (%)	0.390000

SURFACE SAR

VOLUME SAR

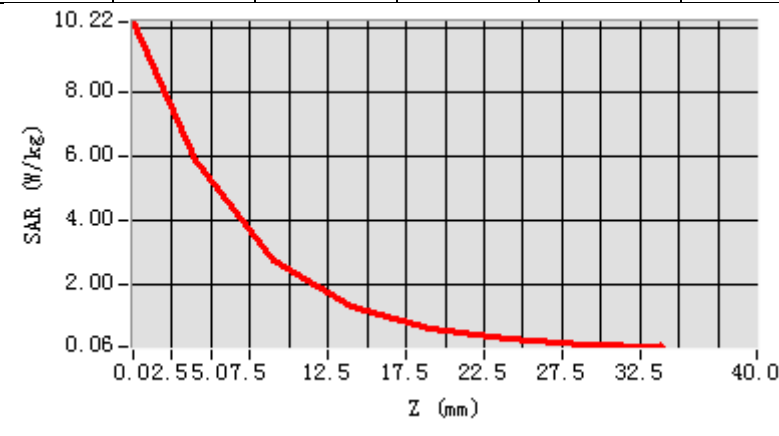


Maximum location: X=-5.00, Y=-1.00

SAR Peak: 10.96 W/kg

SAR 10g (W/Kg)	23.33453
SAR 1g (W/Kg)	56.33343

Z (mm)	0.00	4.00	9.00	14.00	19.00	24.00	29.00
SAR (W/Kg)	10.2188	5.8819	2.7478	1.3151	0.6266	0.2969	0.1341



3D screen shot	Hot spot position
