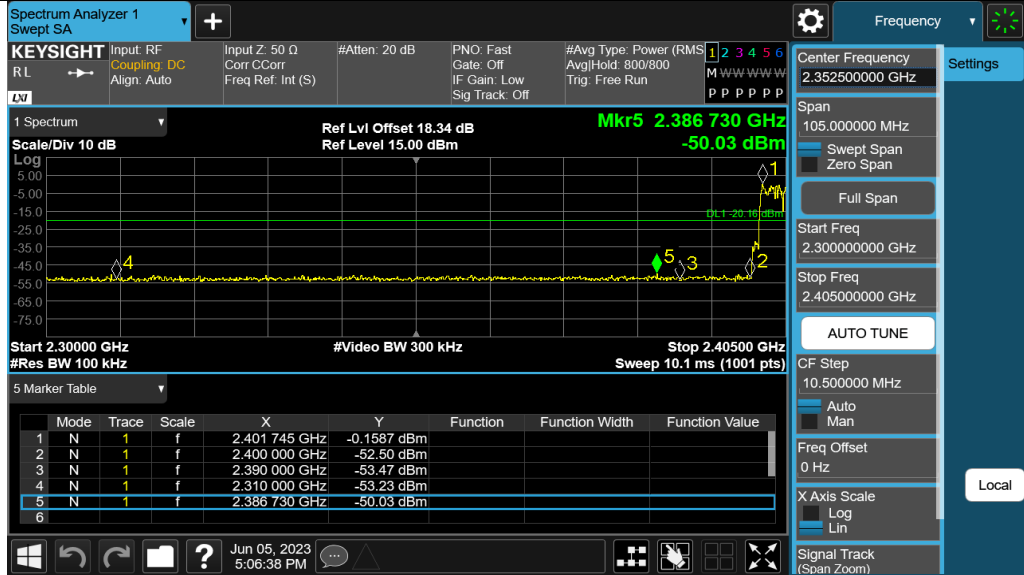
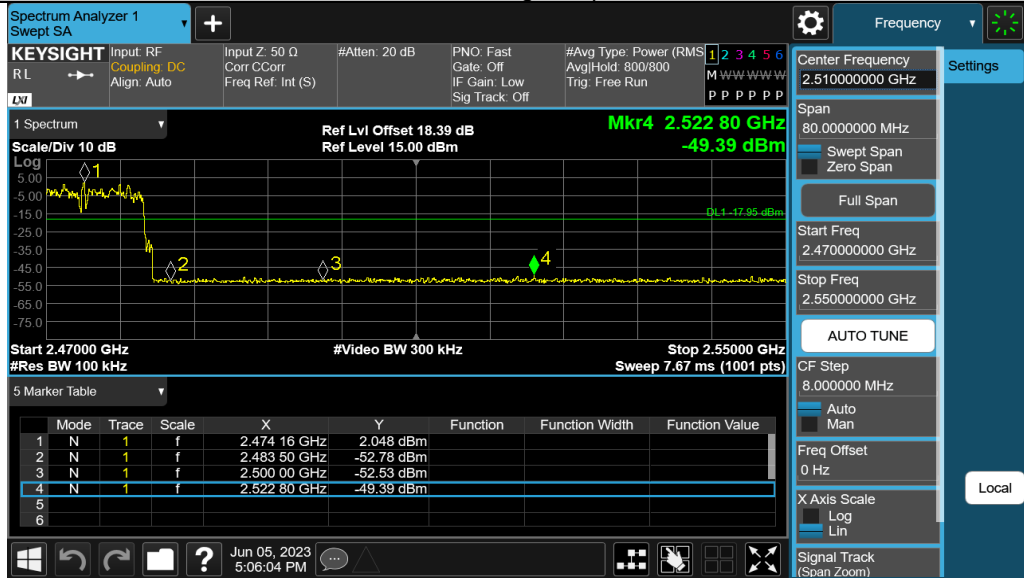


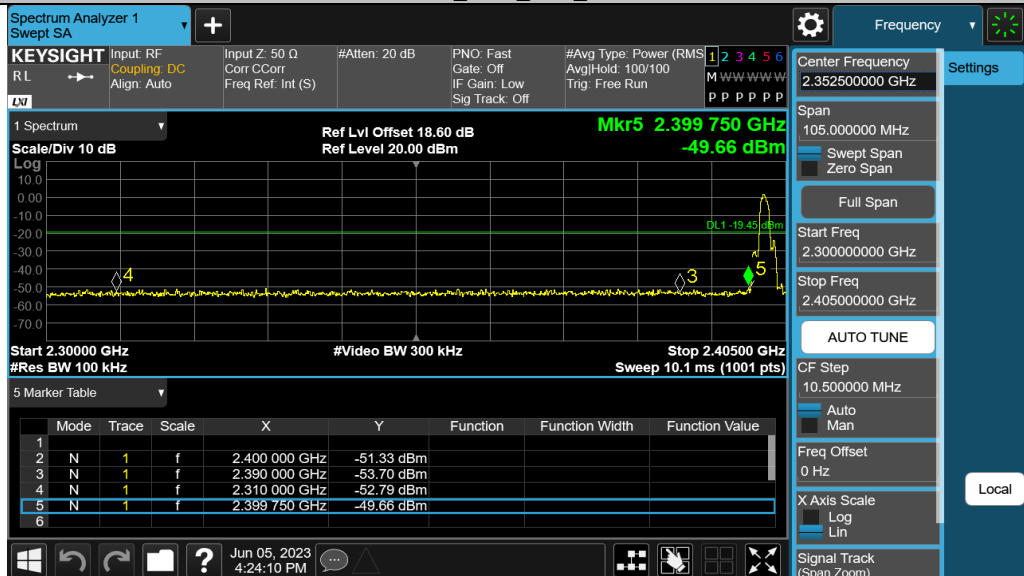
2DH5_Ant1_Low_Hop_2402

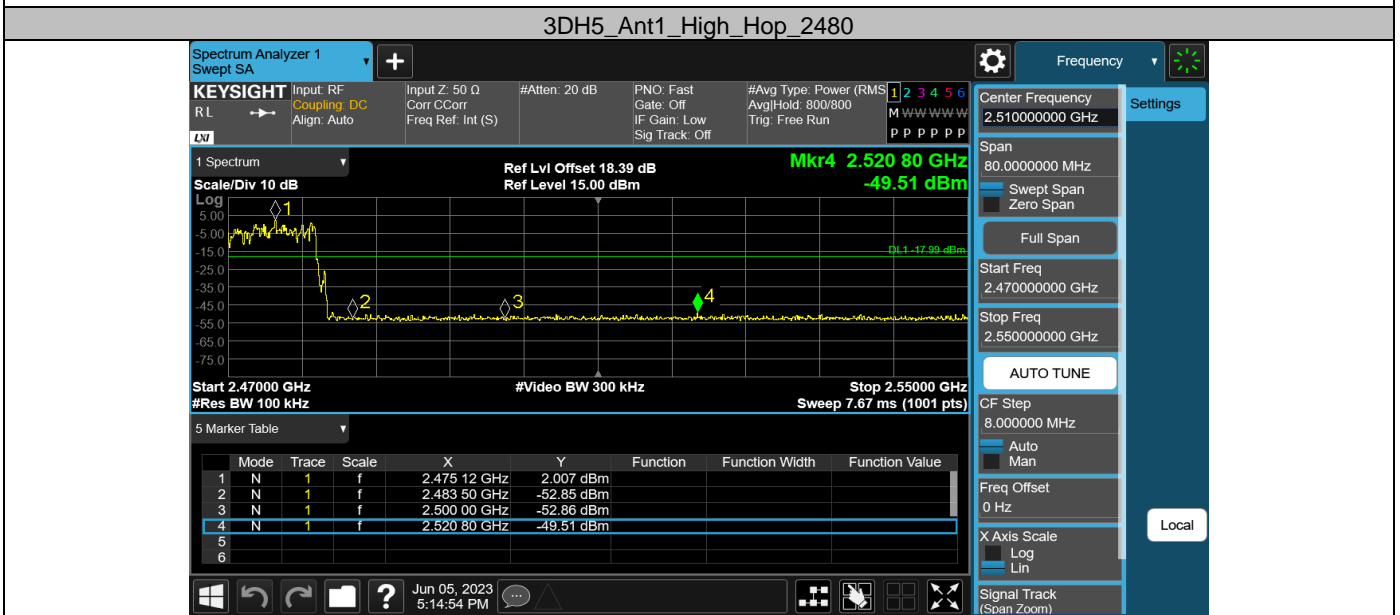
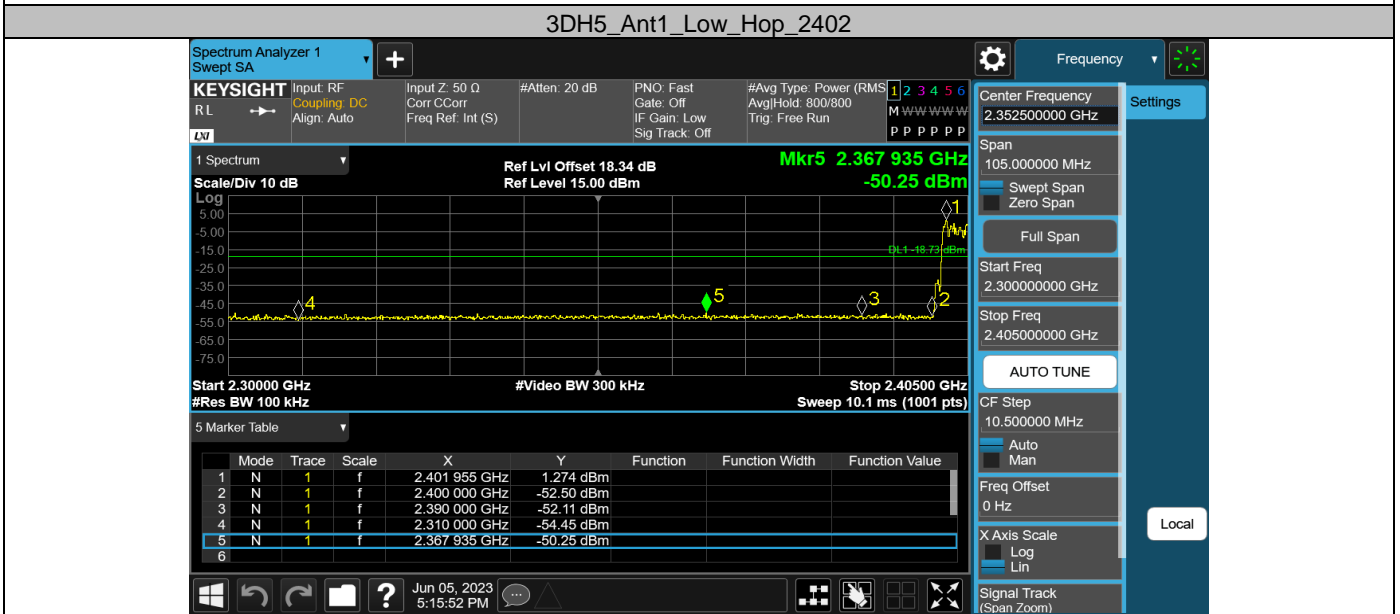
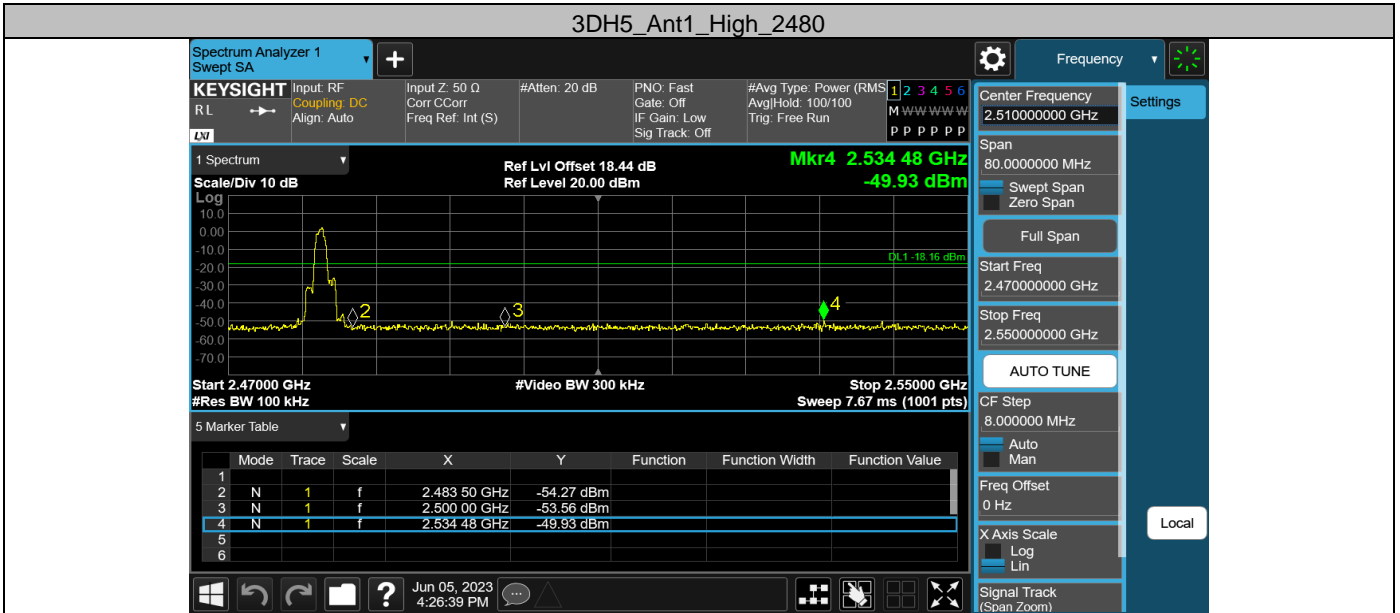


2DH5_Ant1_High_Hop_2480



3DH5_Ant1_Low_2402

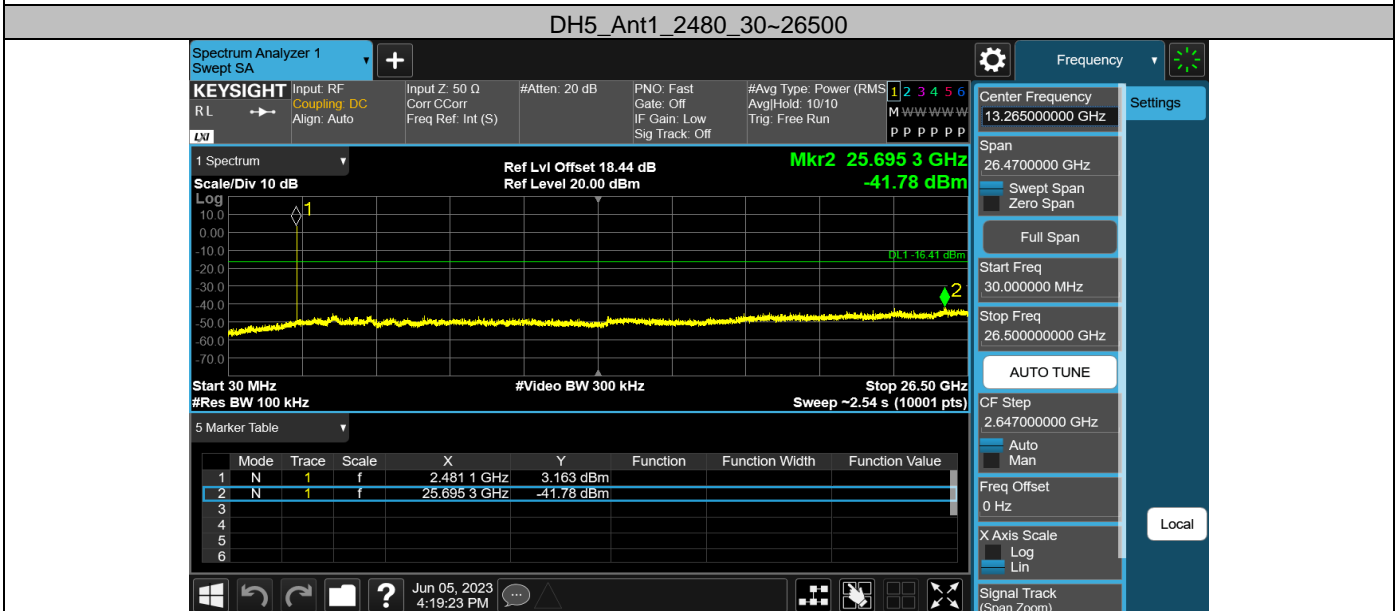
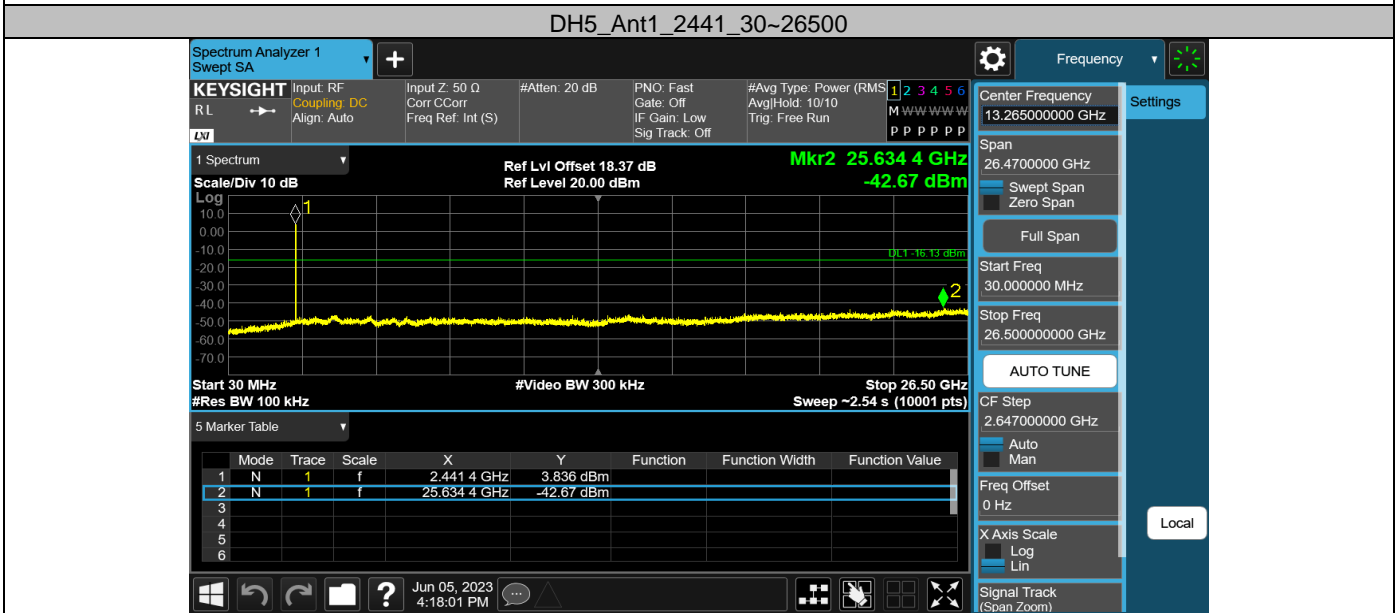
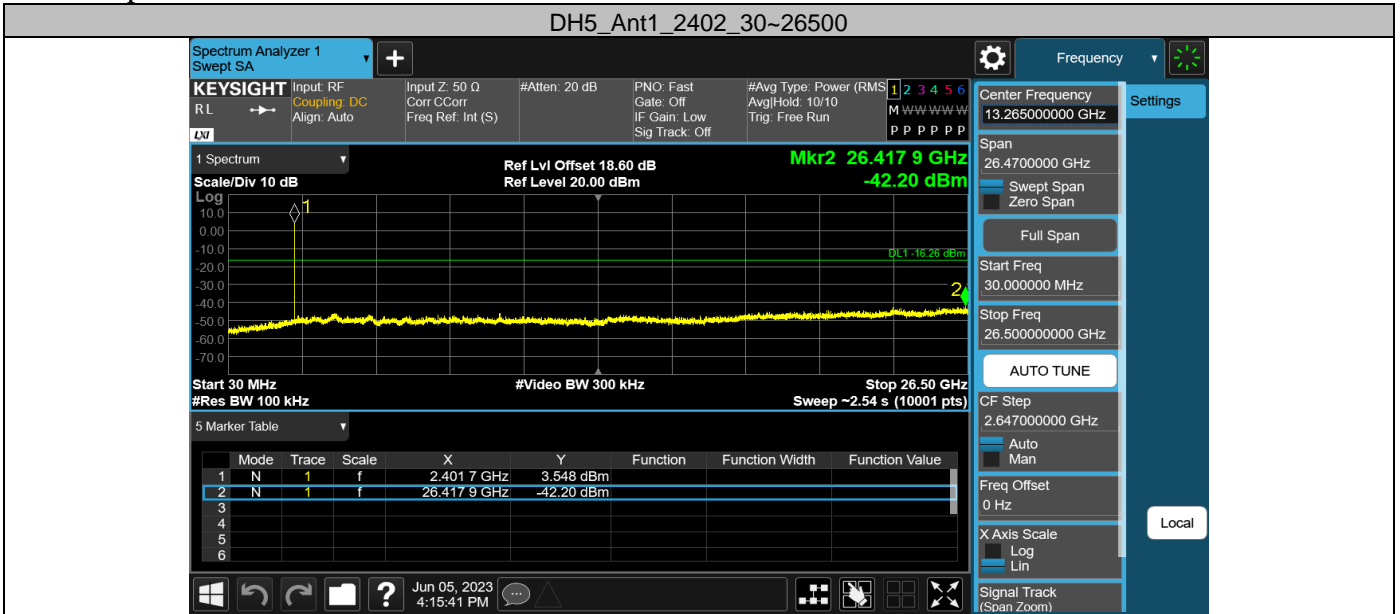


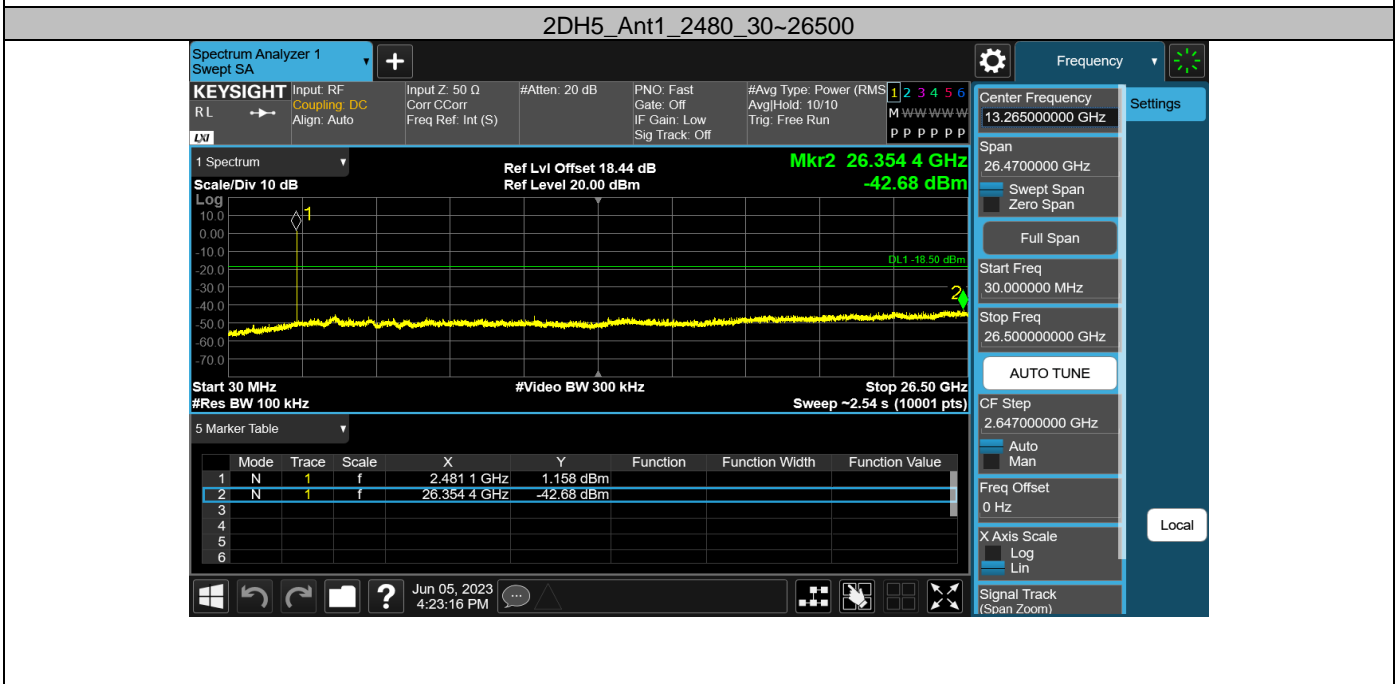
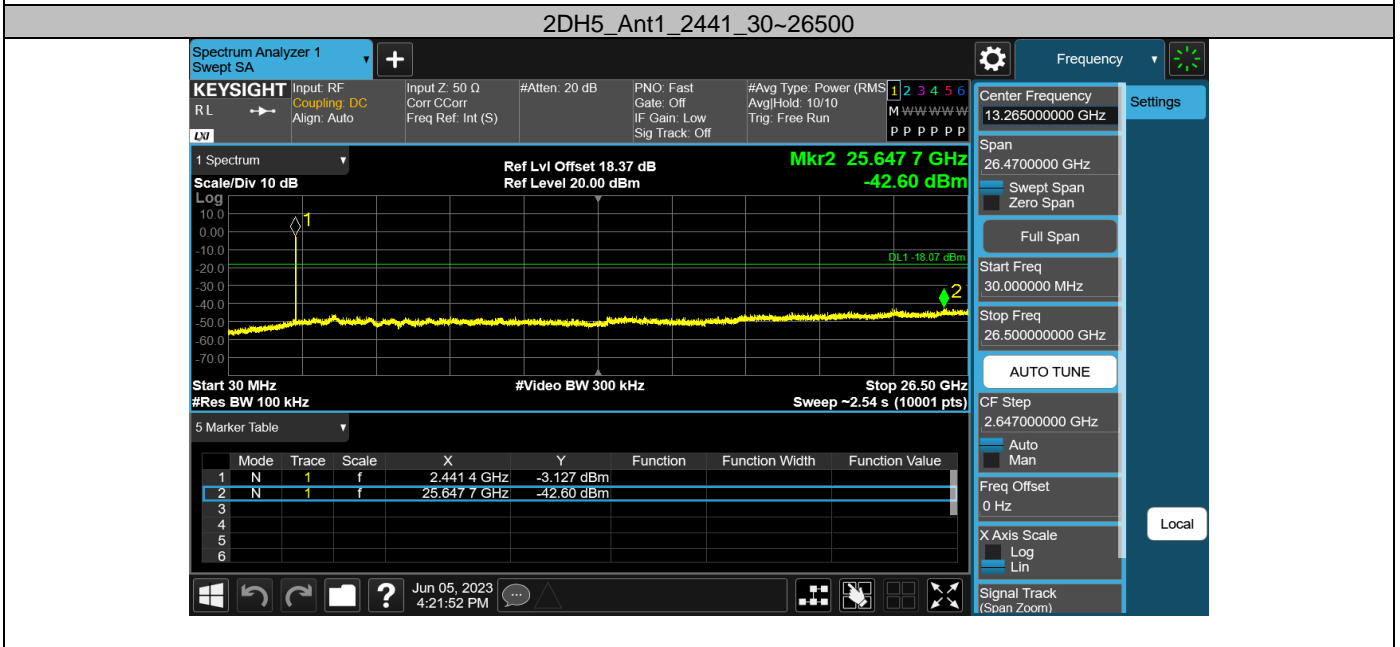
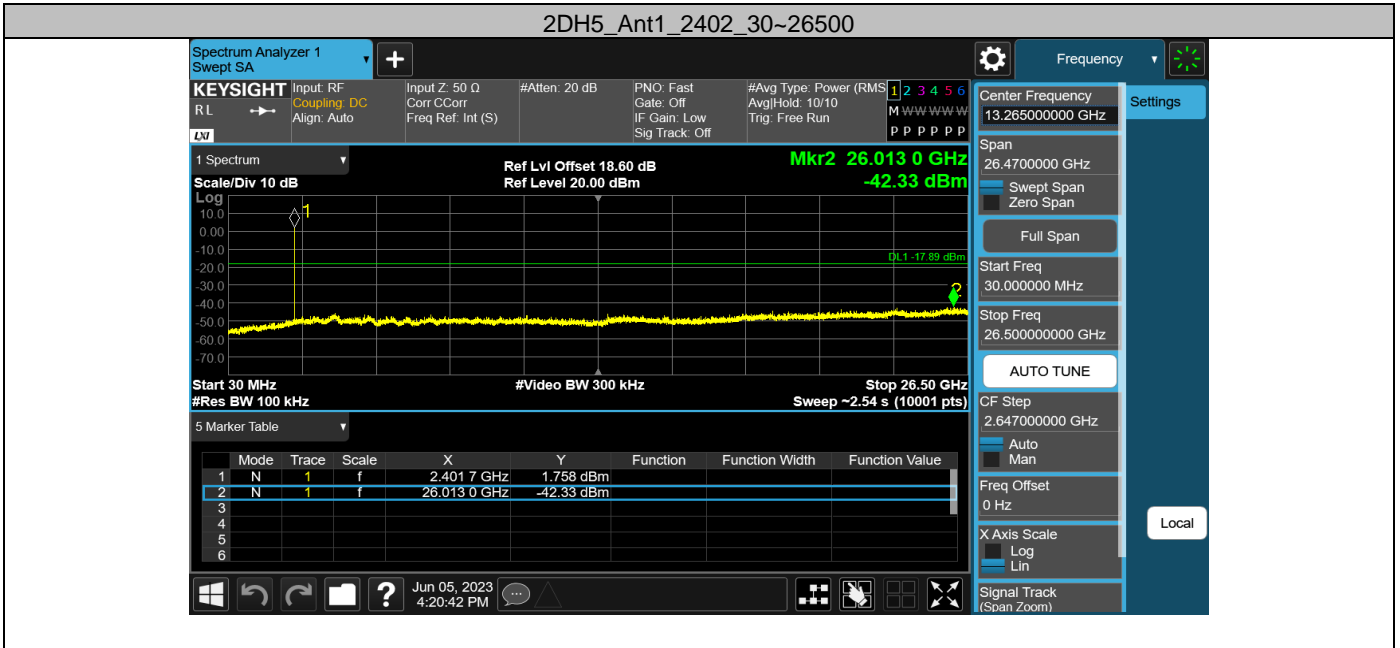


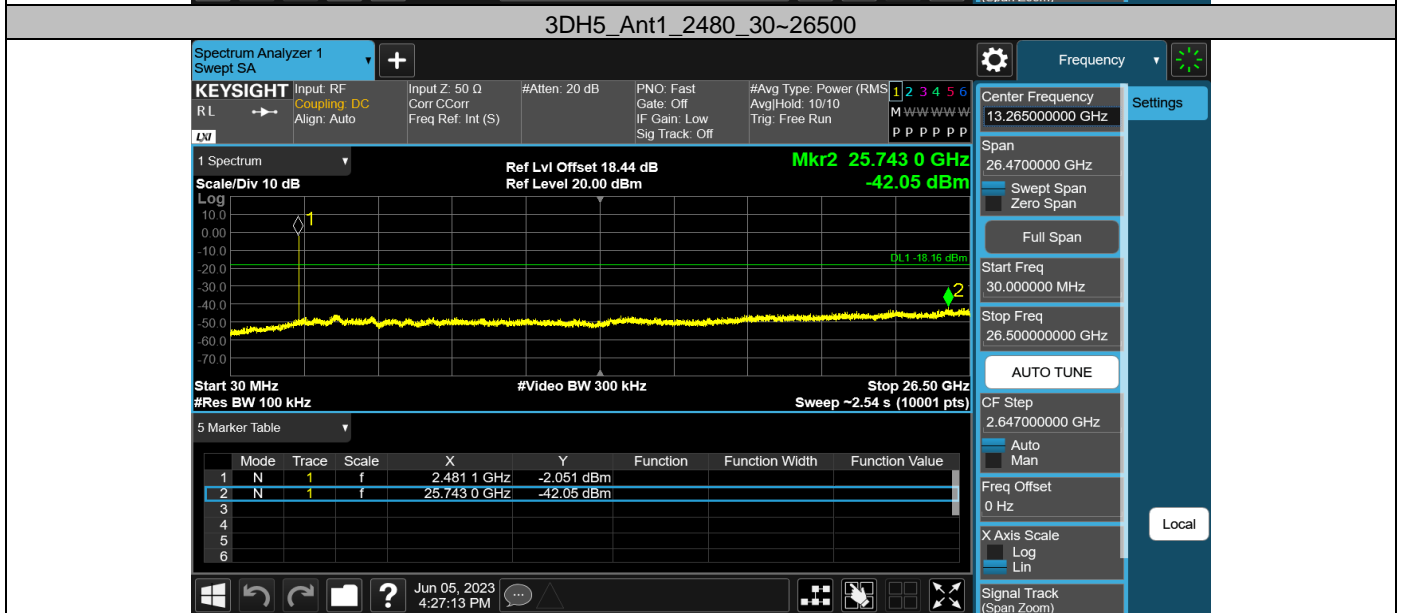
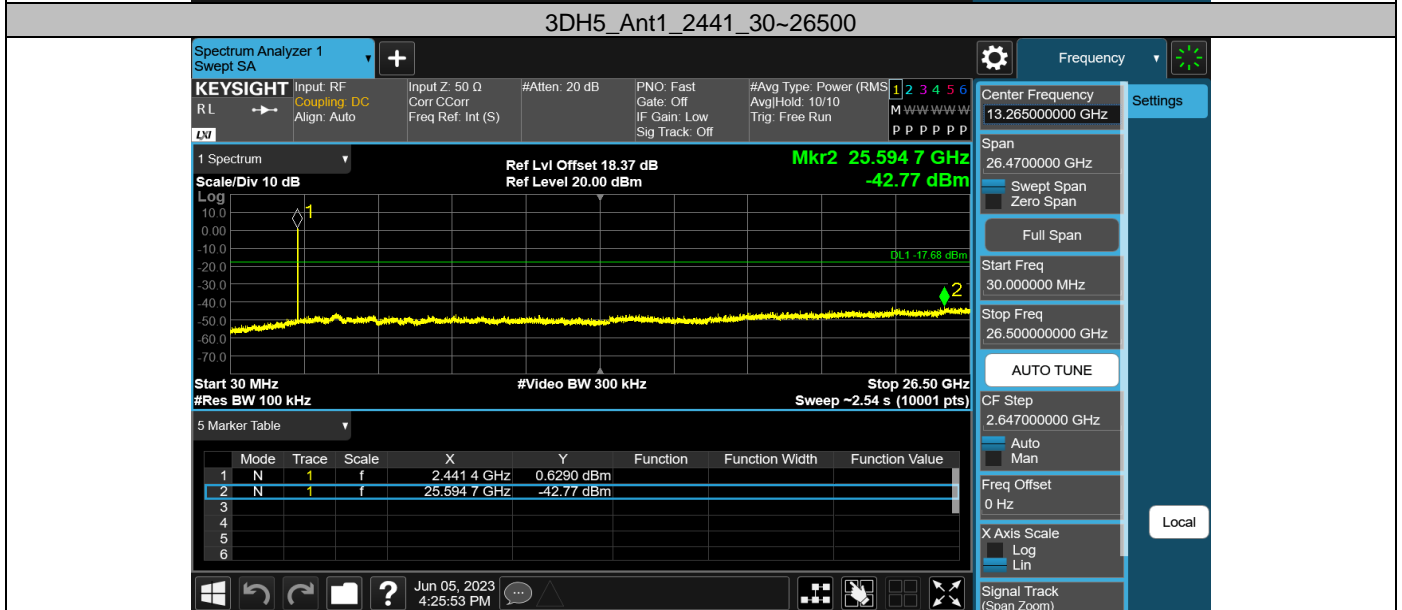
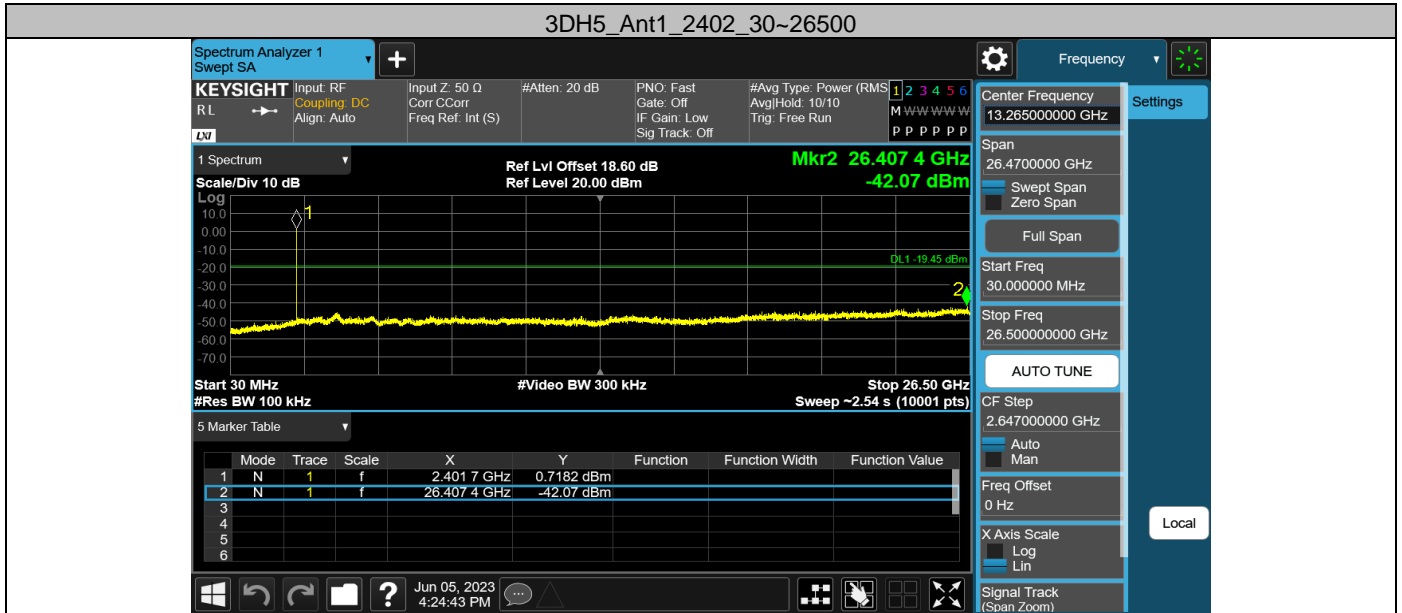
Appendix H: Conducted Spurious Emission
Test Result

Test Mode	Antenna	Freq(MHz)	Freq Range [MHz]	Ref Level [dBm]	Result [dBm]	Limit [dBm]	Verdict
DH5	Ant1	2402	30~26500	3.74	-42.2	≤-16.26	PASS
		2441	30~26500	3.87	-42.67	≤-16.13	PASS
		2480	30~26500	3.59	-41.78	≤-16.41	PASS
2DH5	Ant1	2402	30~26500	2.11	-42.33	≤-17.89	PASS
		2441	30~26500	1.93	-42.6	≤-18.07	PASS
		2480	30~26500	1.50	-42.68	≤-18.5	PASS
3DH5	Ant1	2402	30~26500	0.55	-42.07	≤-19.45	PASS
		2441	30~26500	2.32	-42.77	≤-17.68	PASS
		2480	30~26500	1.84	-42.05	≤-18.16	PASS

Test Graphs





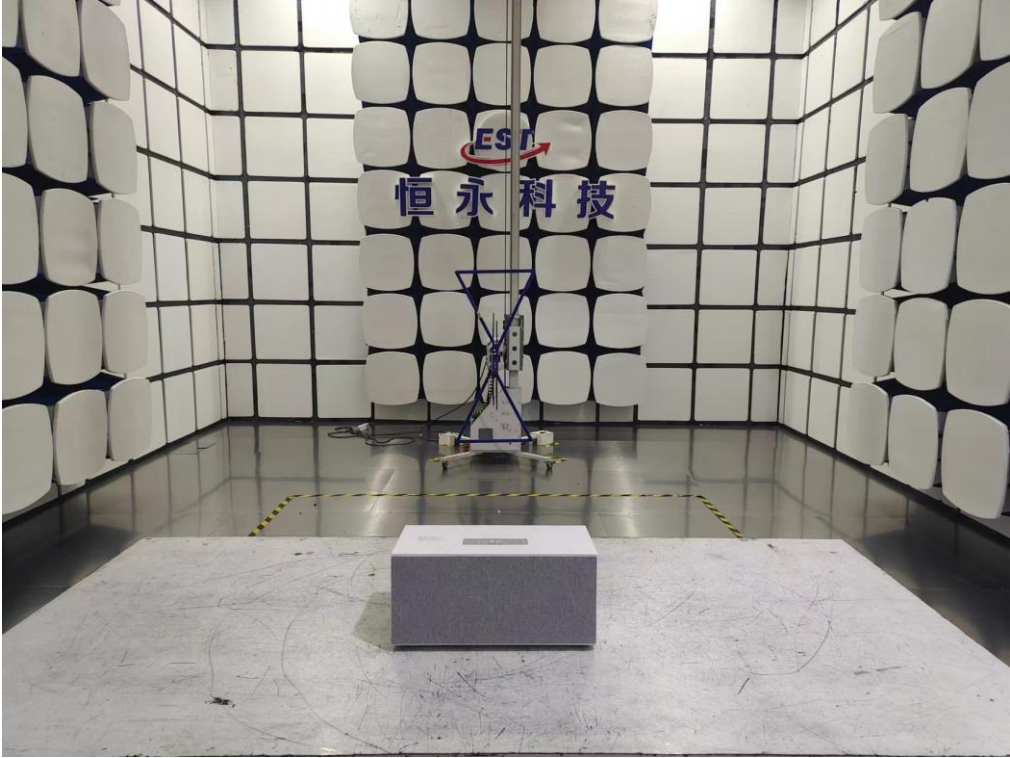


14. TEST SETUP PHOTO

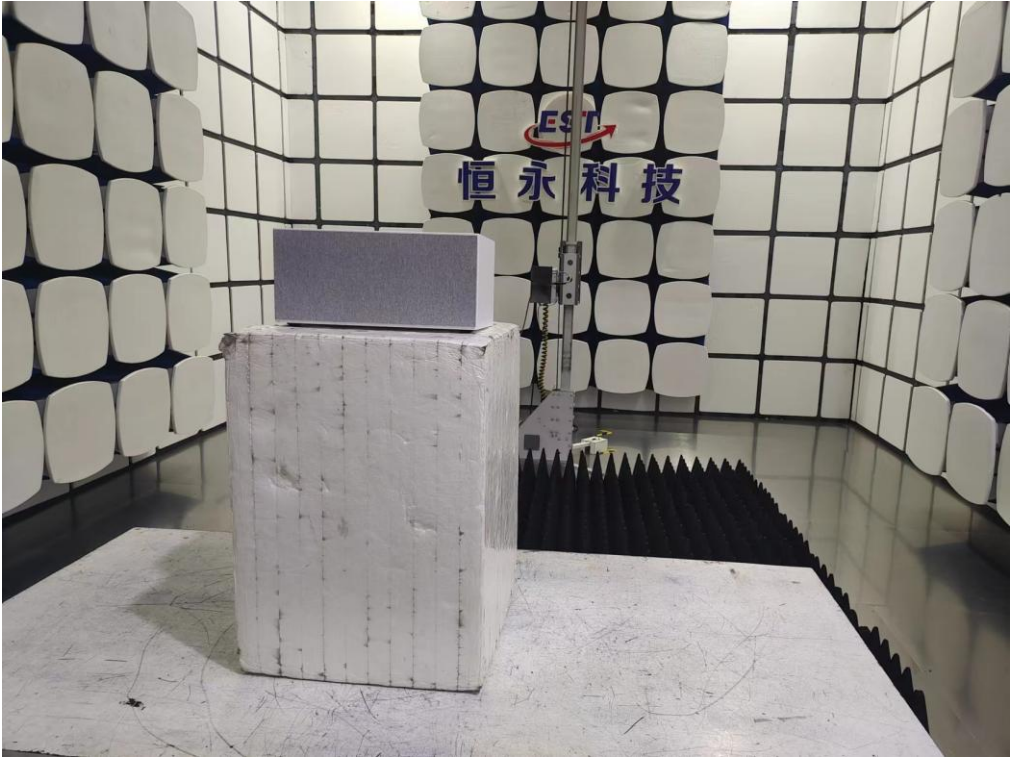
Conducted Test



Radiated Test (Below 1GHz)

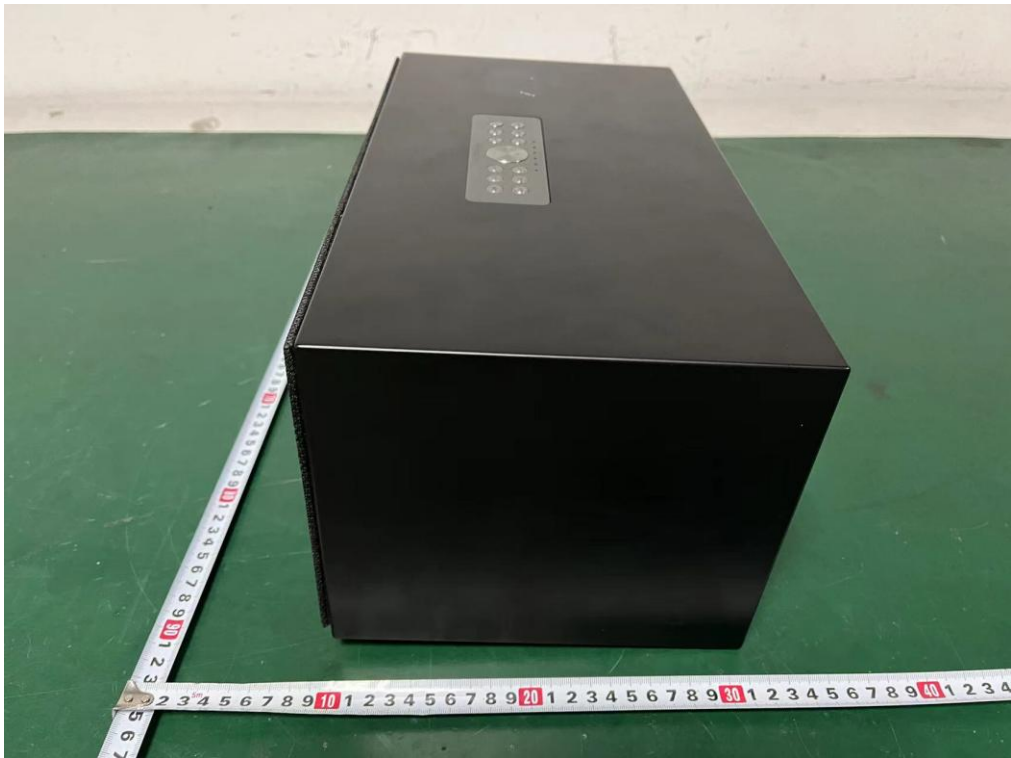


Radiated Test (Above 1GHz)

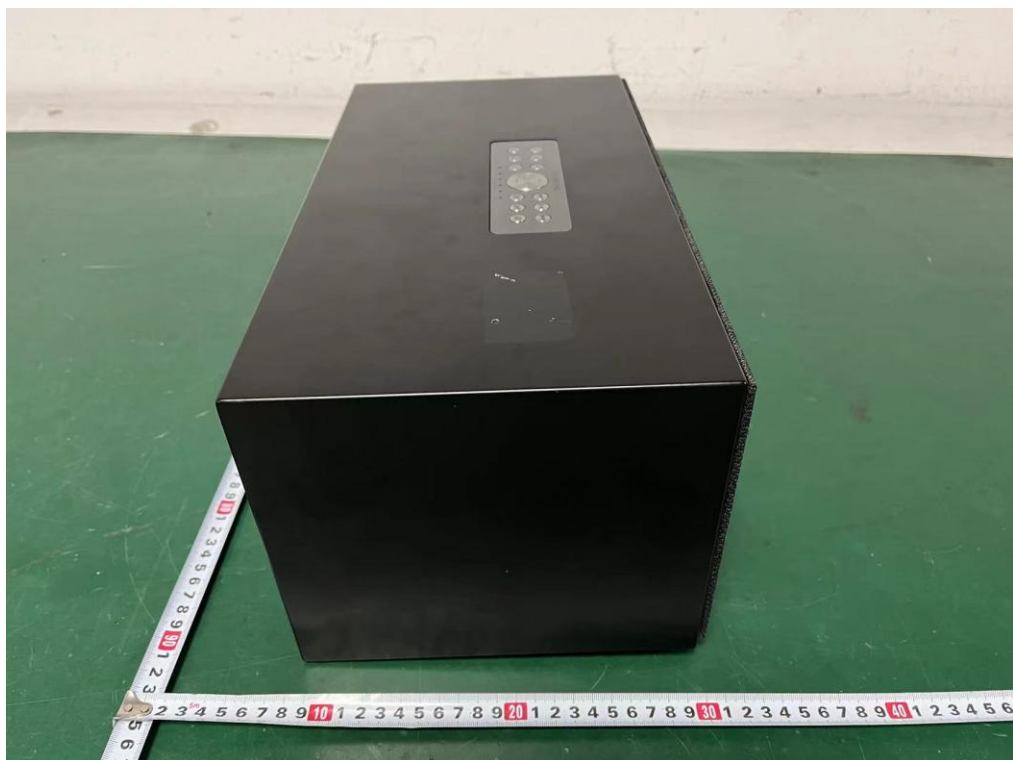


15. EUT PHOTO

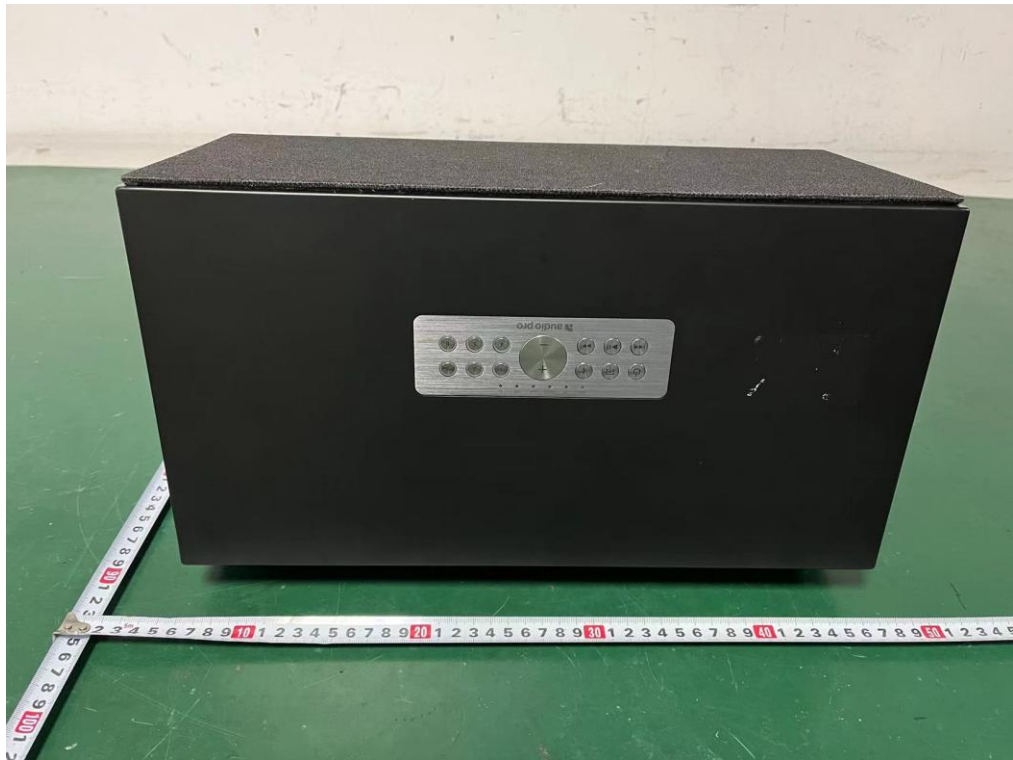
External Photos
M/N: C20



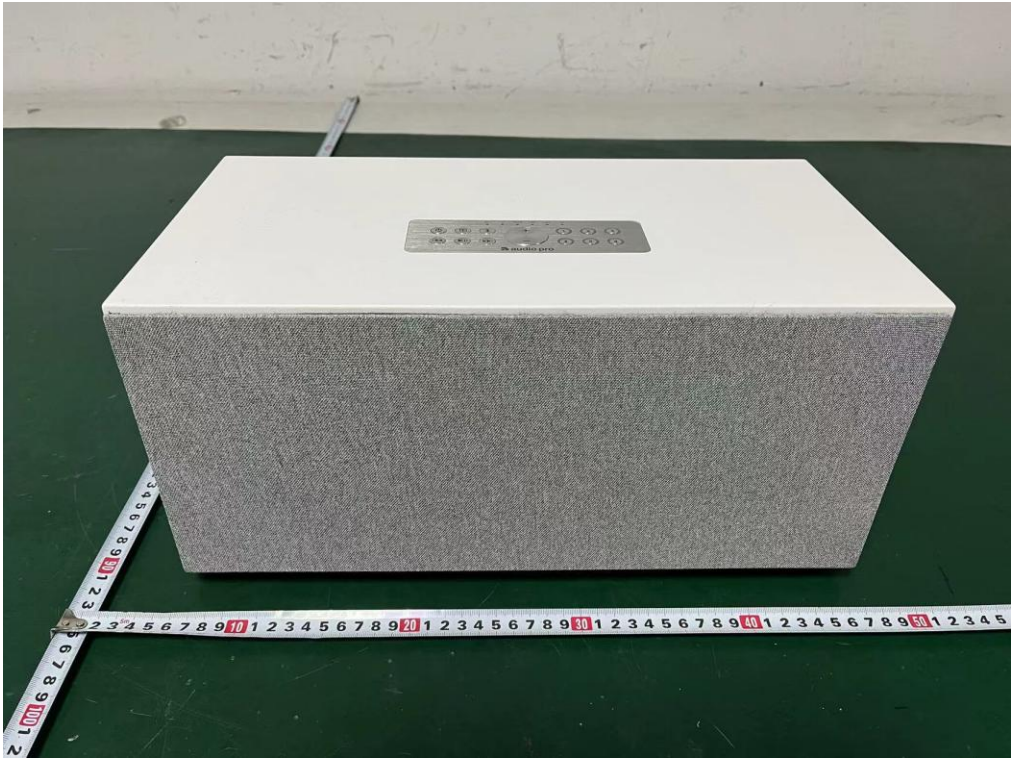
External Photos
M/N: C20



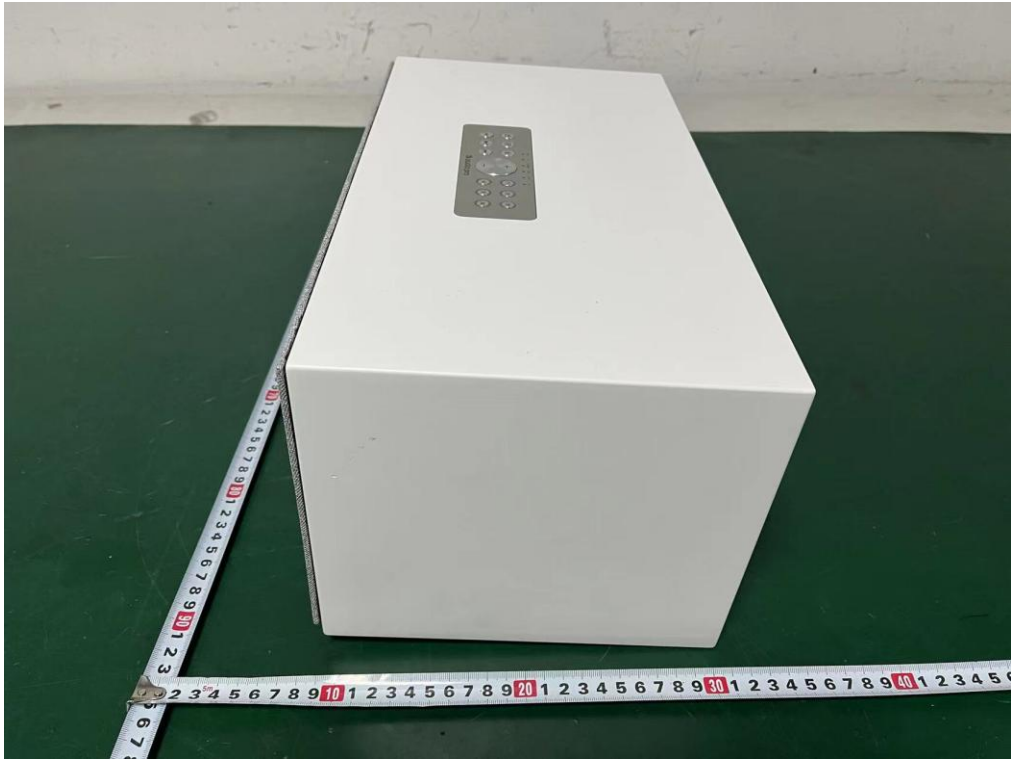
External Photos
M/N: C20



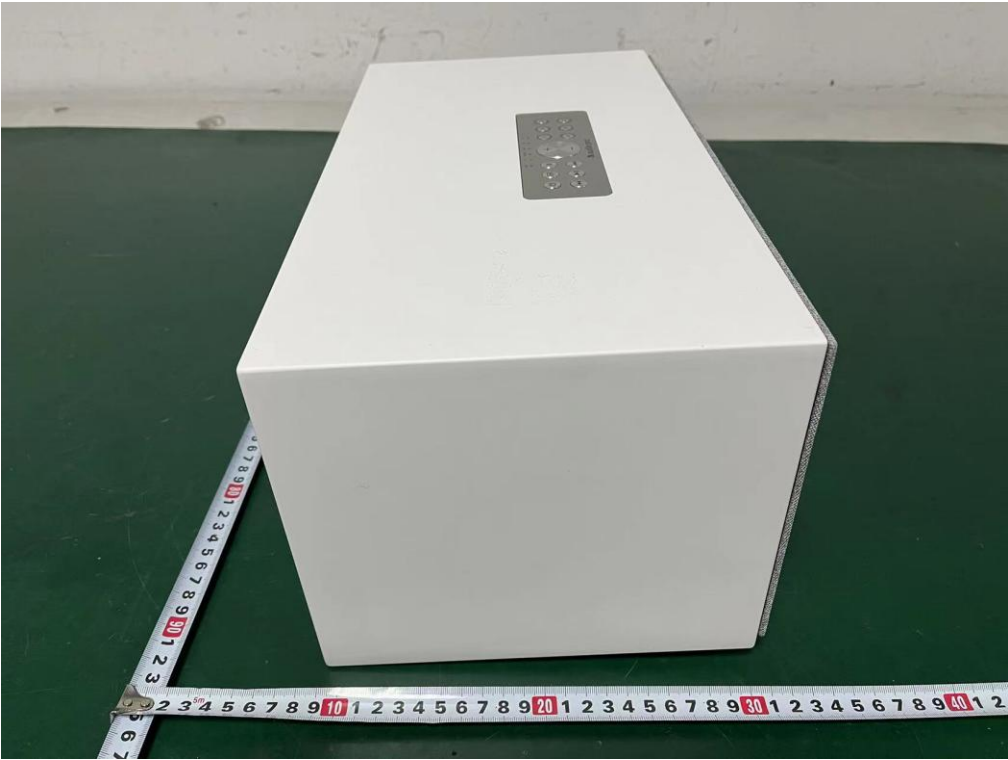
External Photos
M/N: C20



External Photos
M/N: C20



External Photos
M/N: C20



External Photos
M/N: C20



Internal Photos
M/N: C20



Internal Photos
M/N: C20

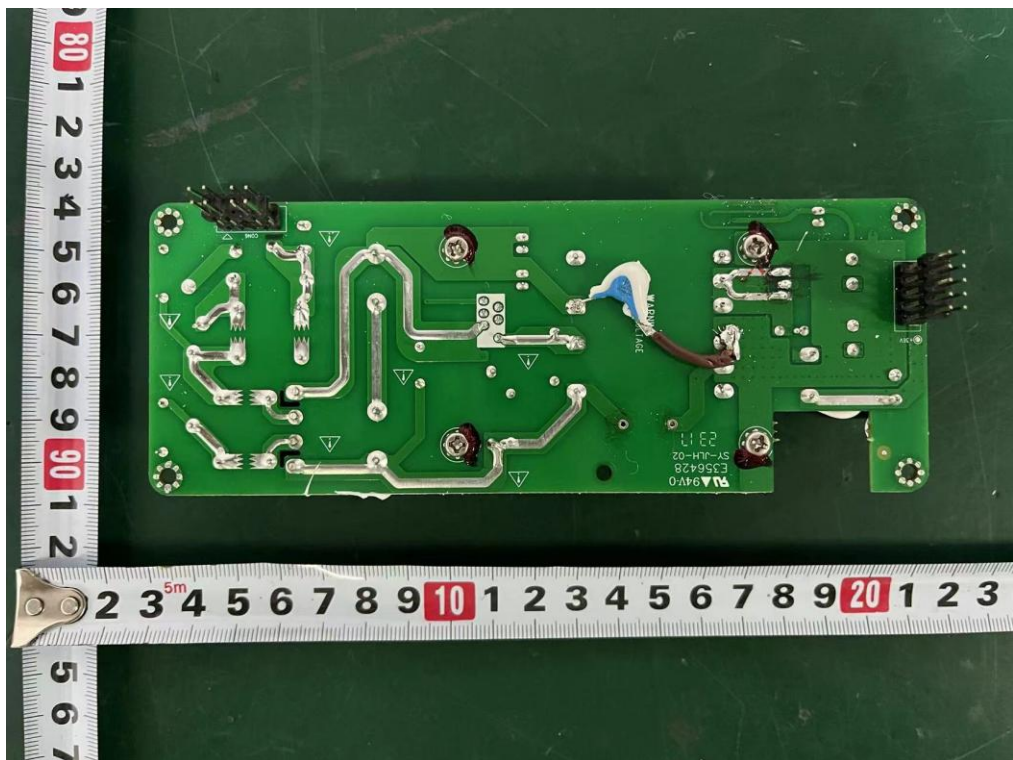


Internal Photos
M/N: C20

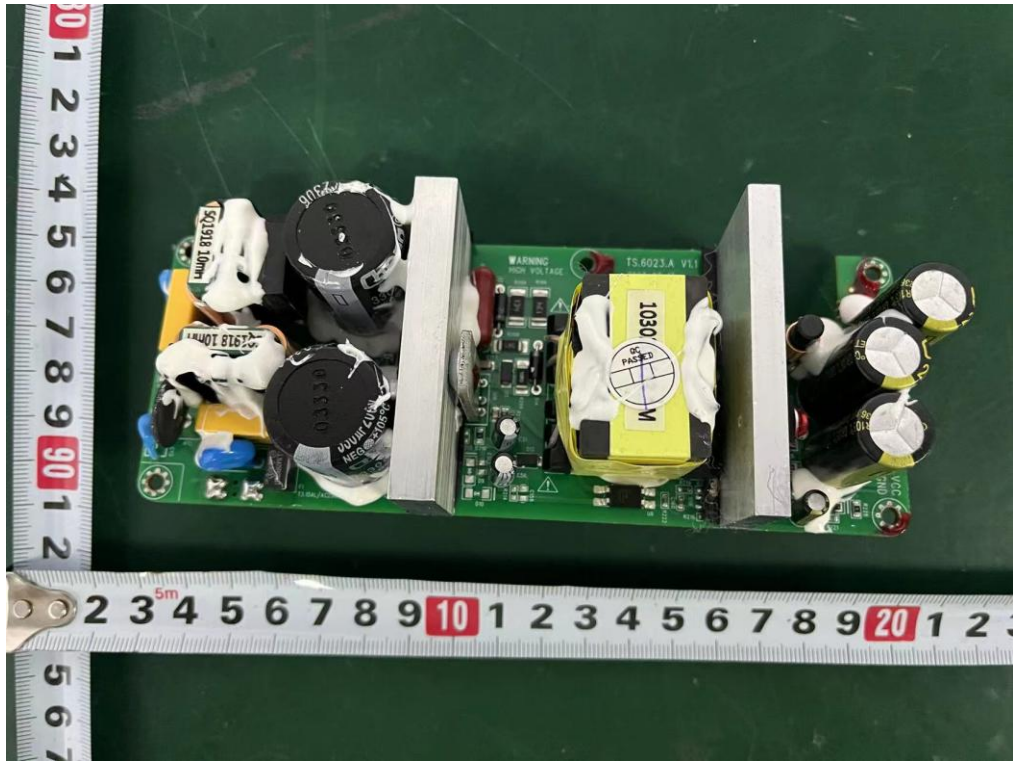


Internal Photos

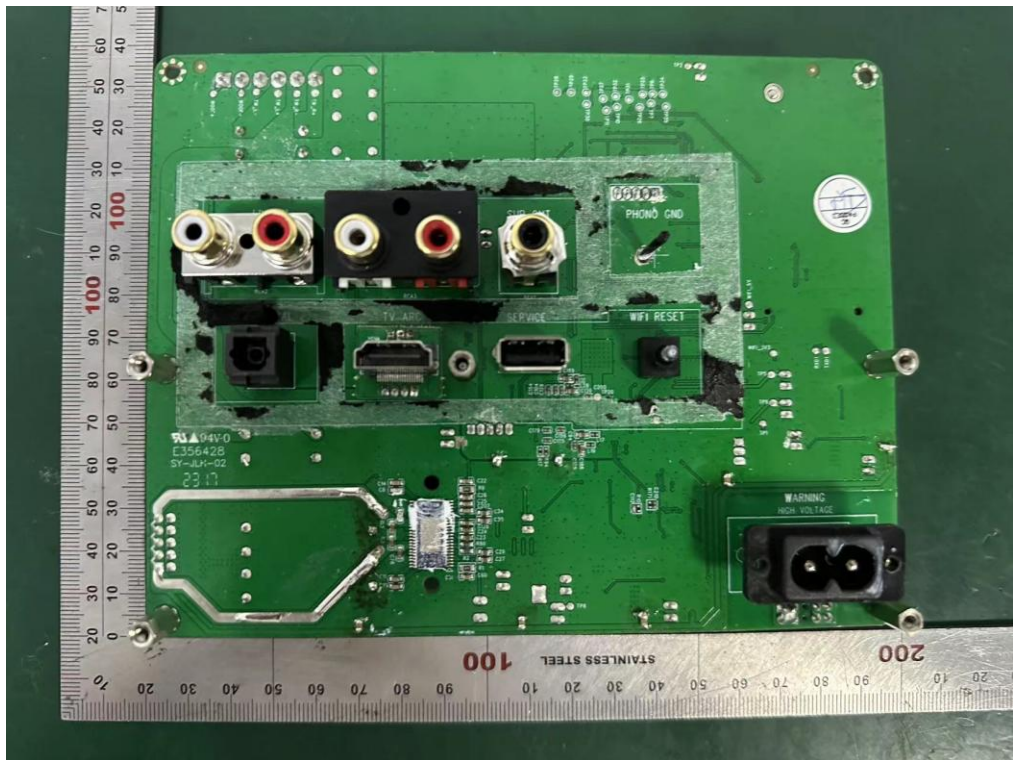
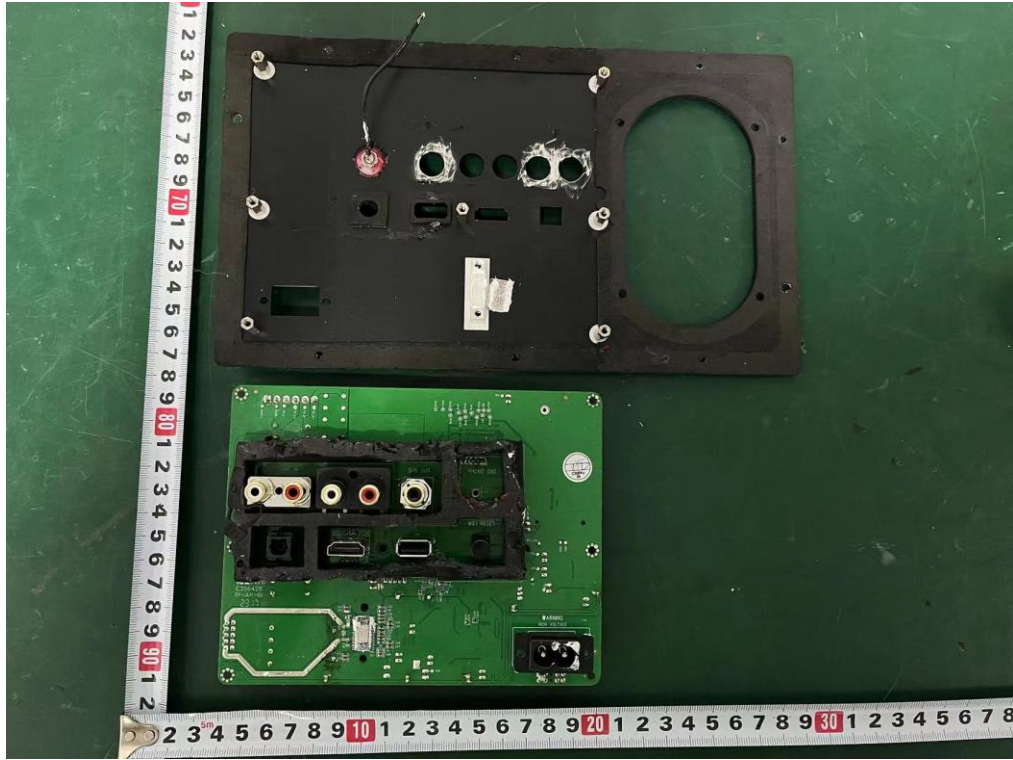
M/N: C20



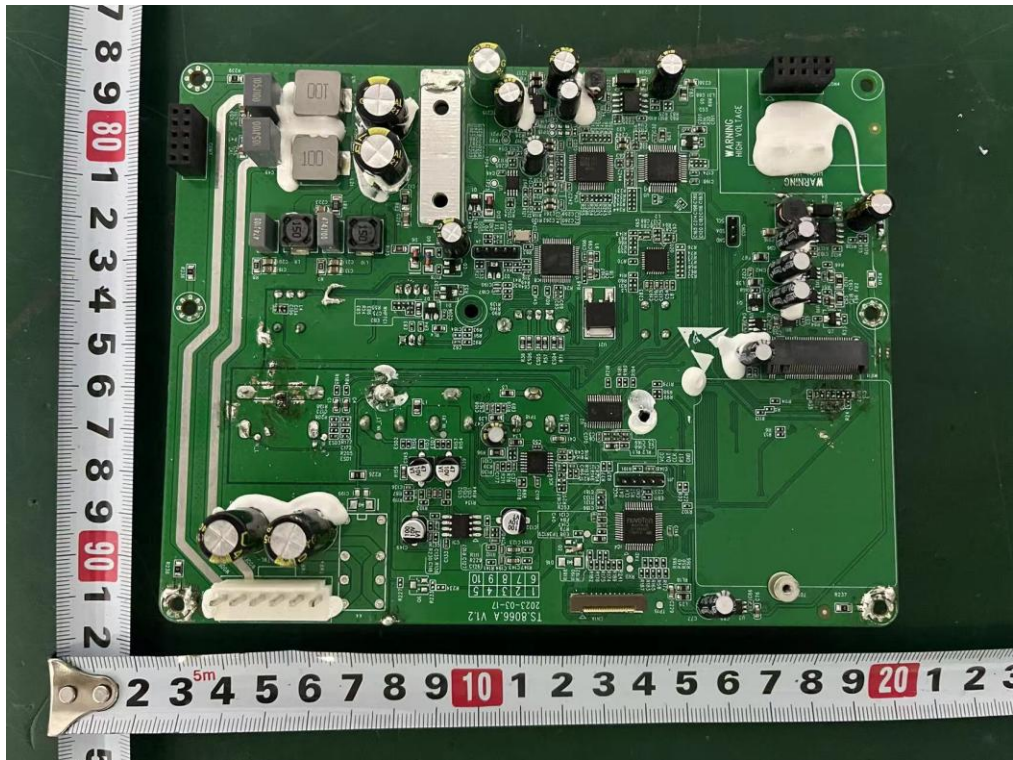
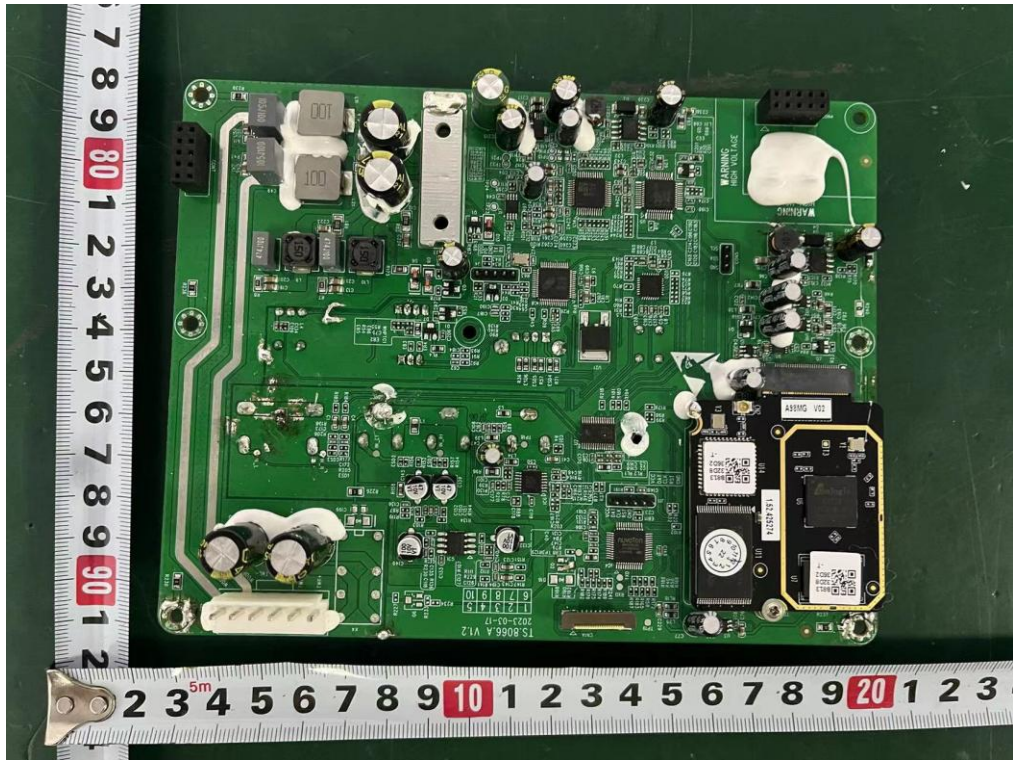
Internal Photos
M/N: C20



Internal Photos
M/N: C20

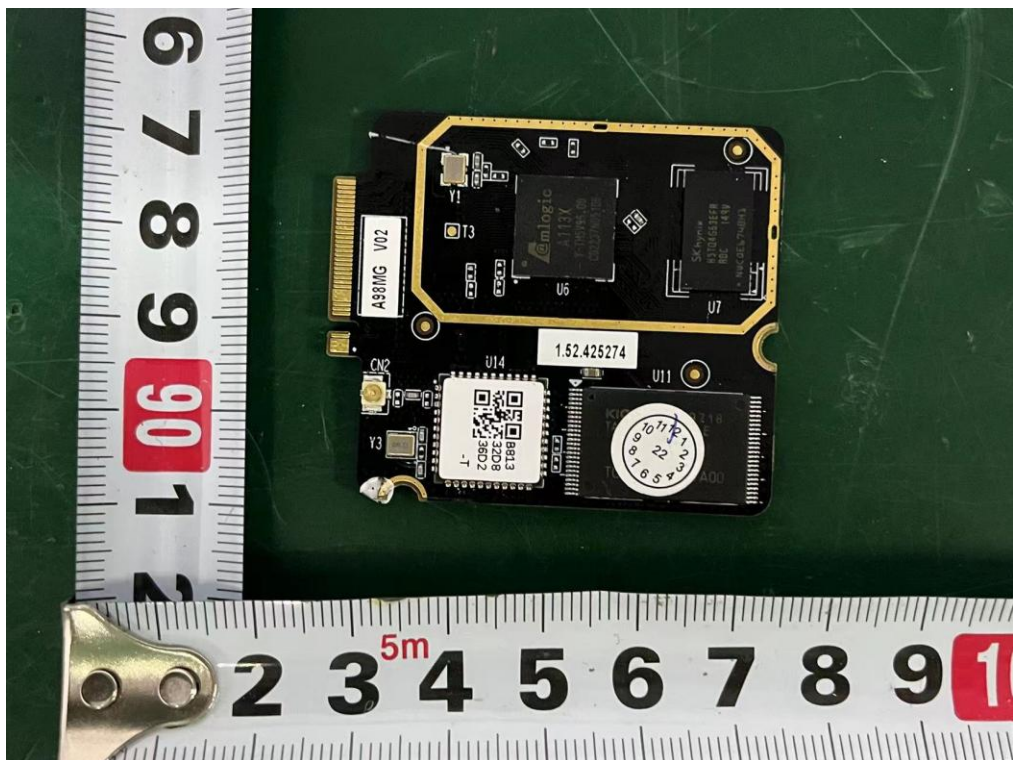
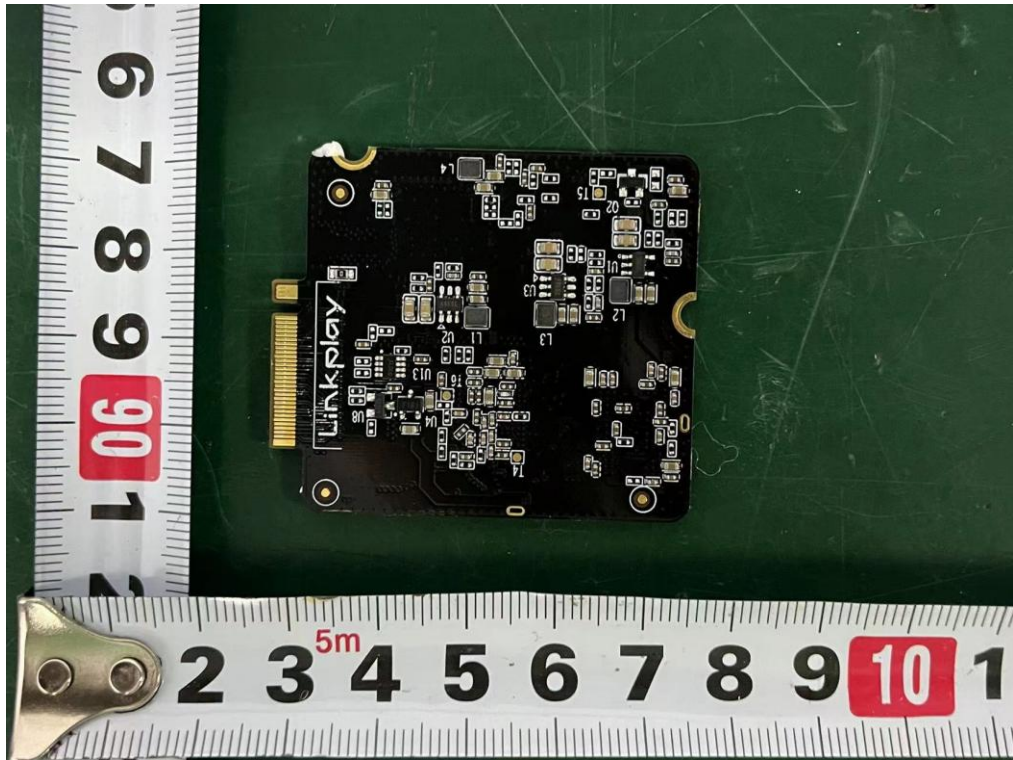


Internal Photos
M/N: C20



Internal Photos

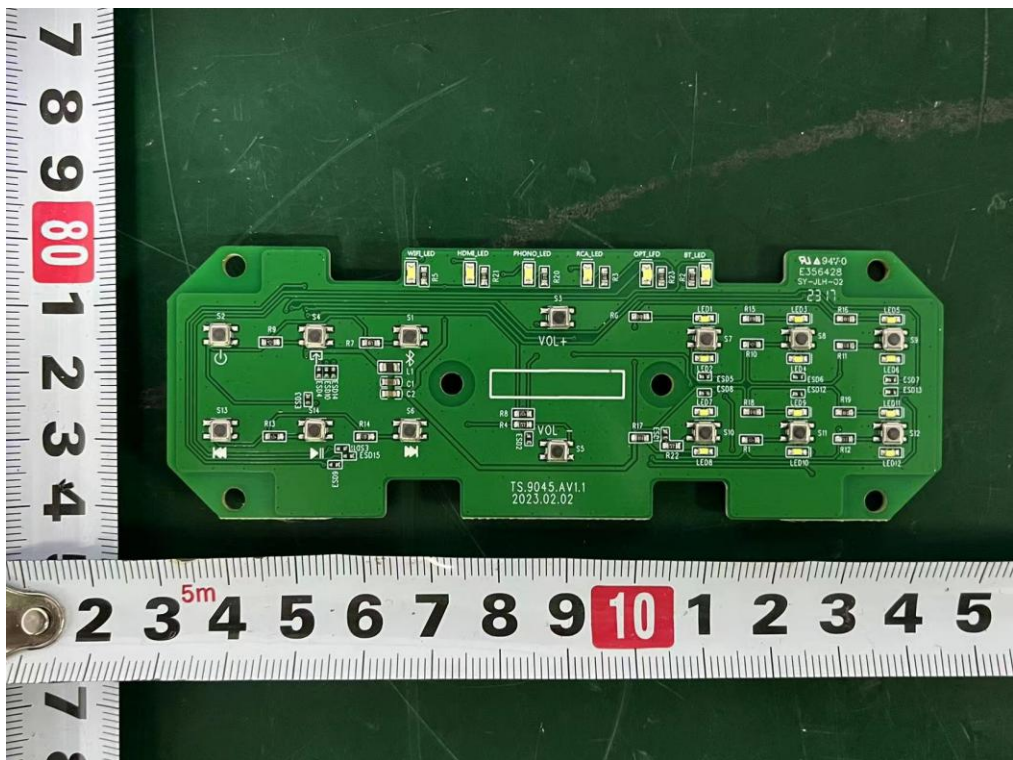
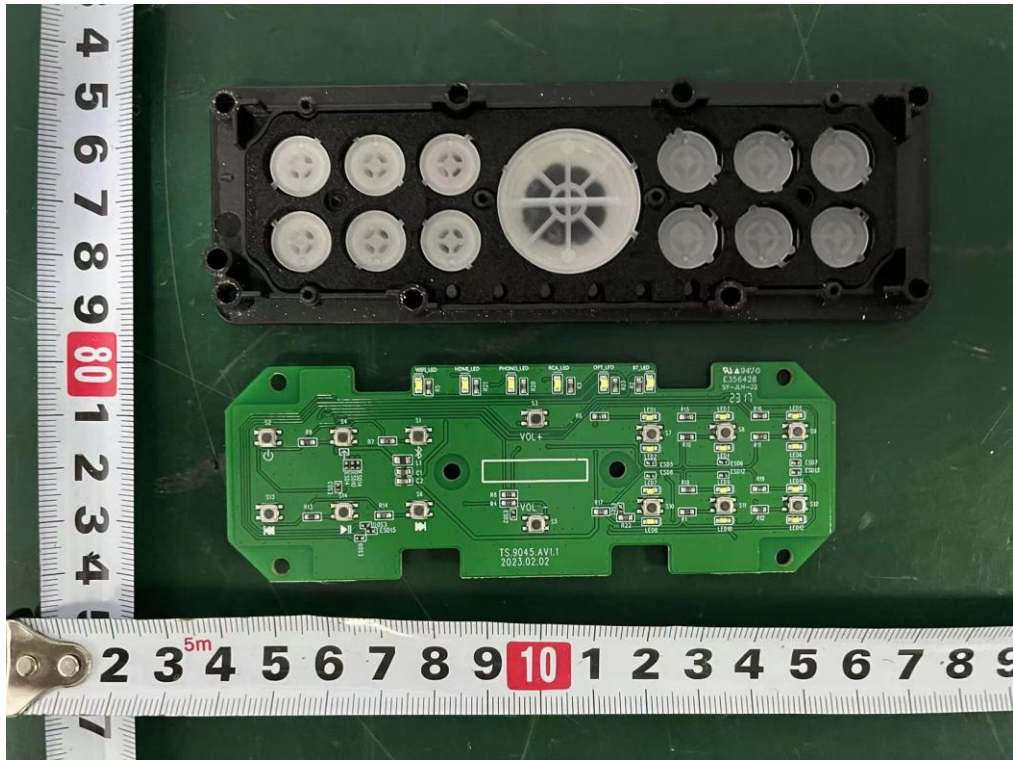
M/N: C20



Internal Photos
M/N: C20

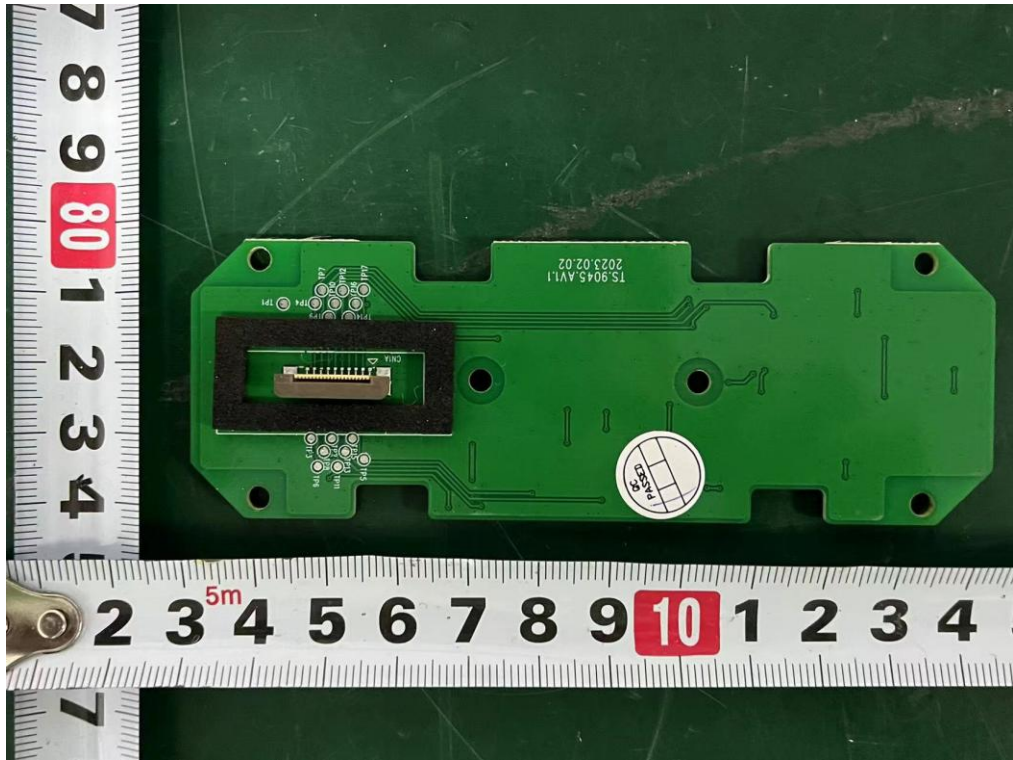


Internal Photos
M/N: C20



Internal Photos

M/N: C20



End of Test Report