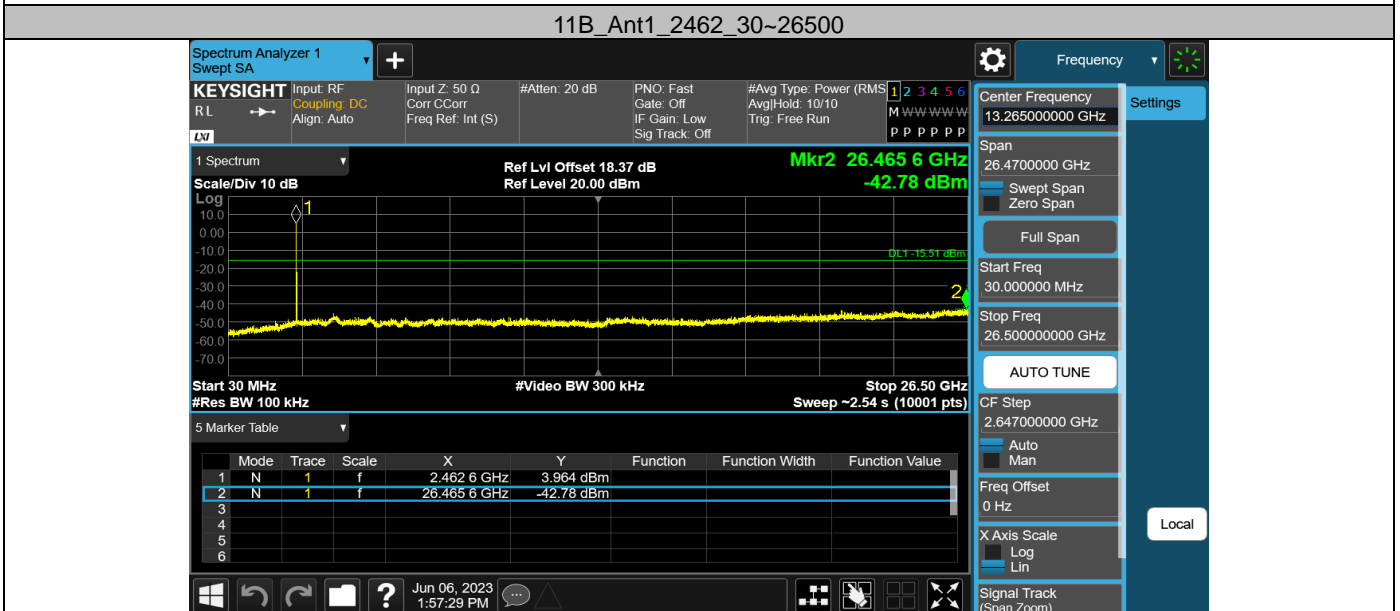
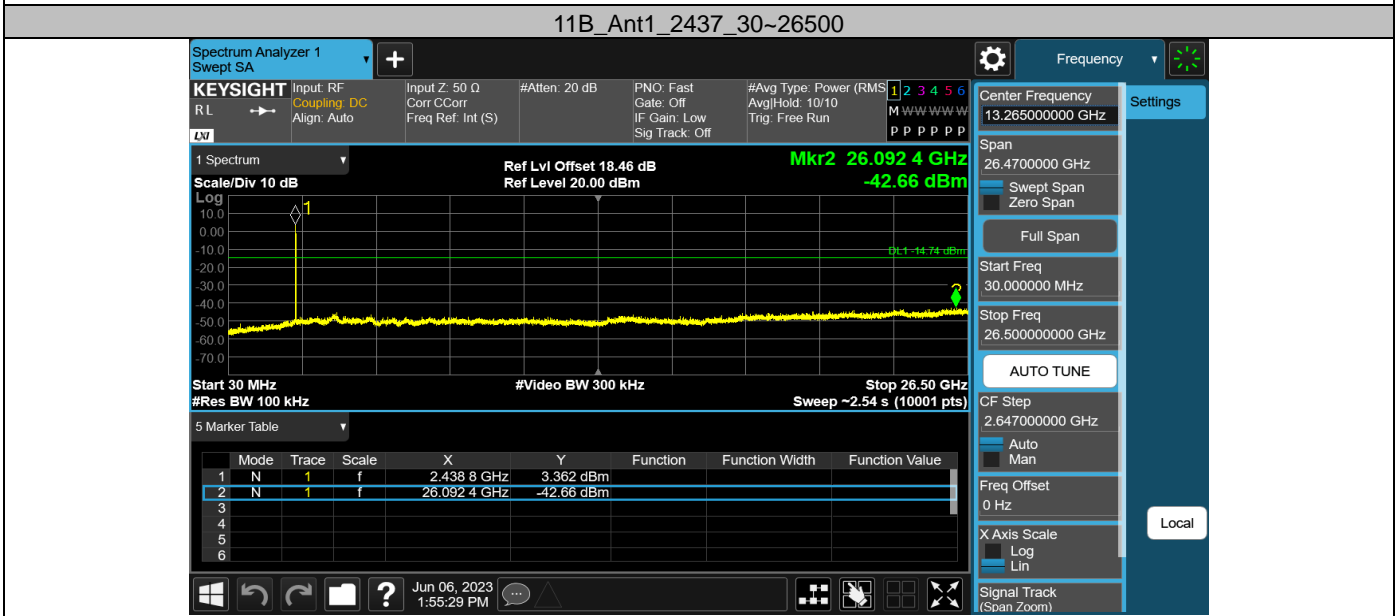
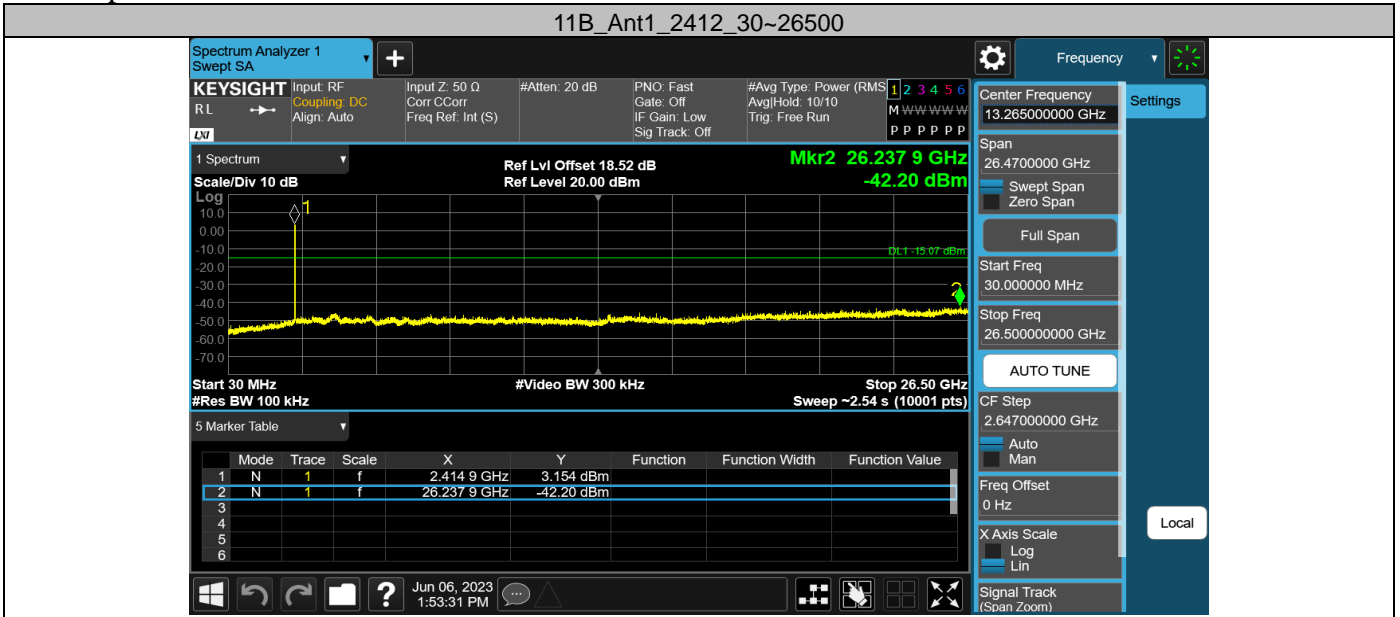
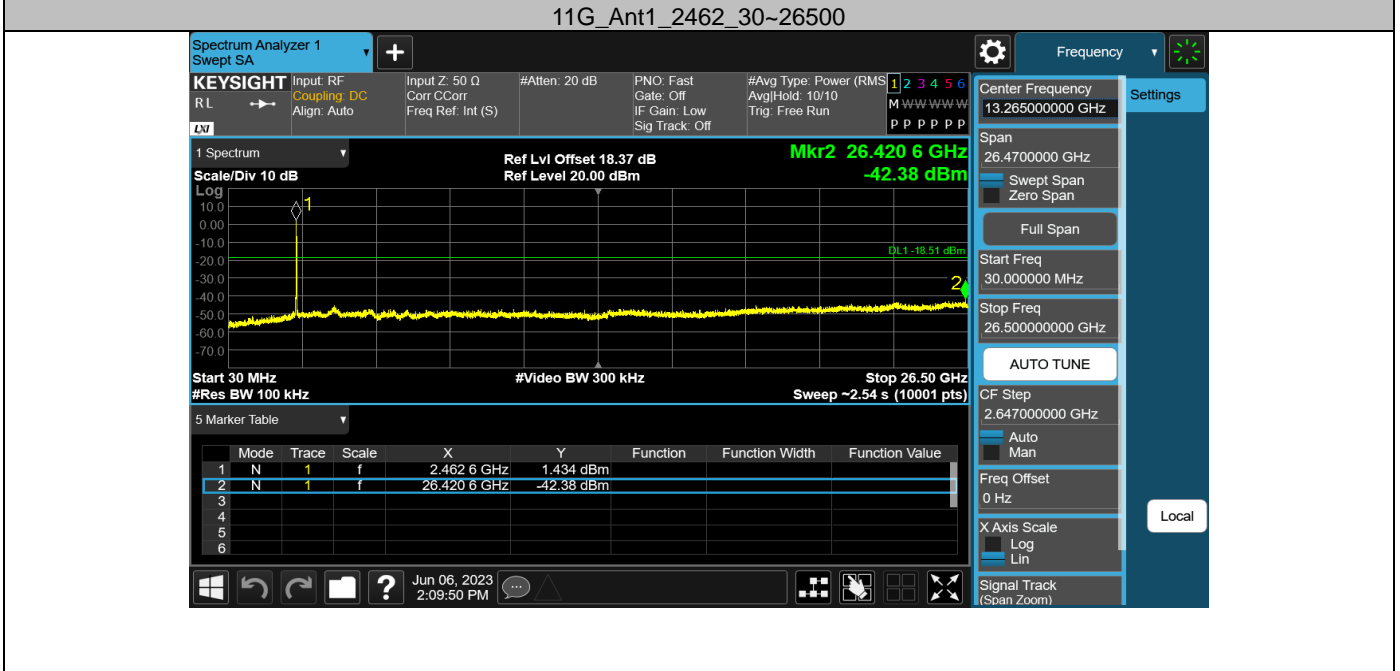
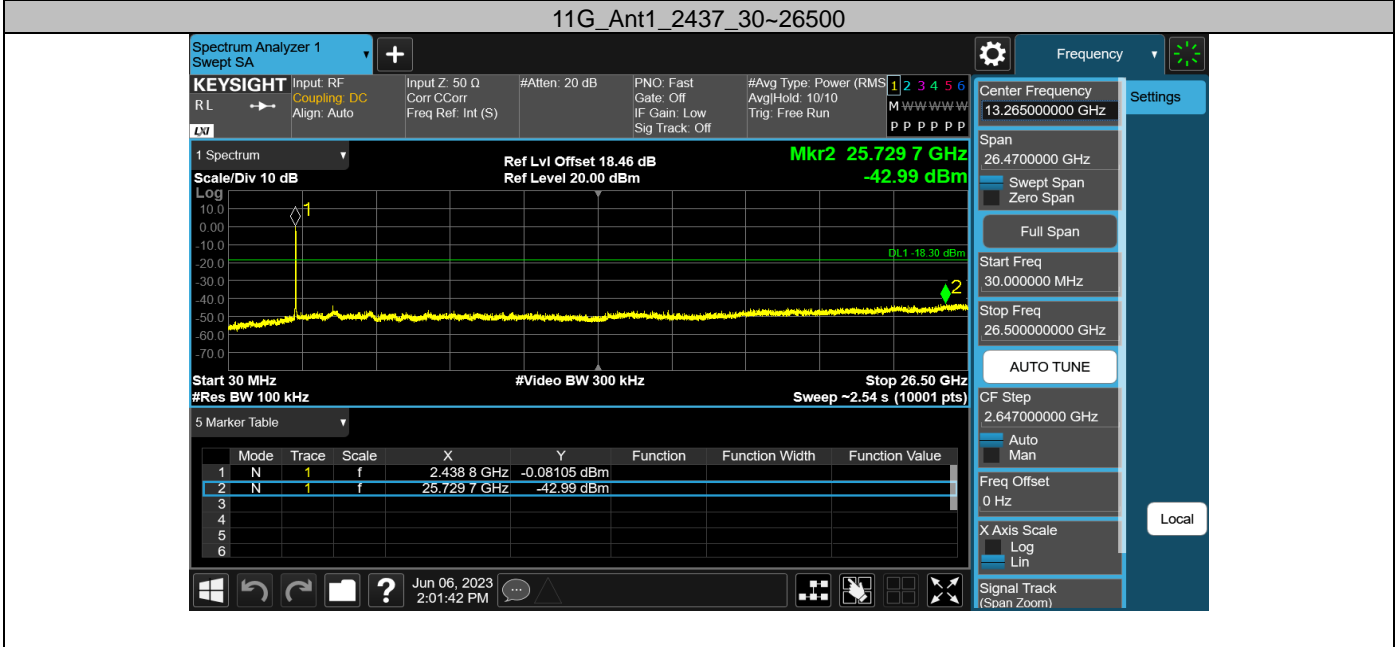
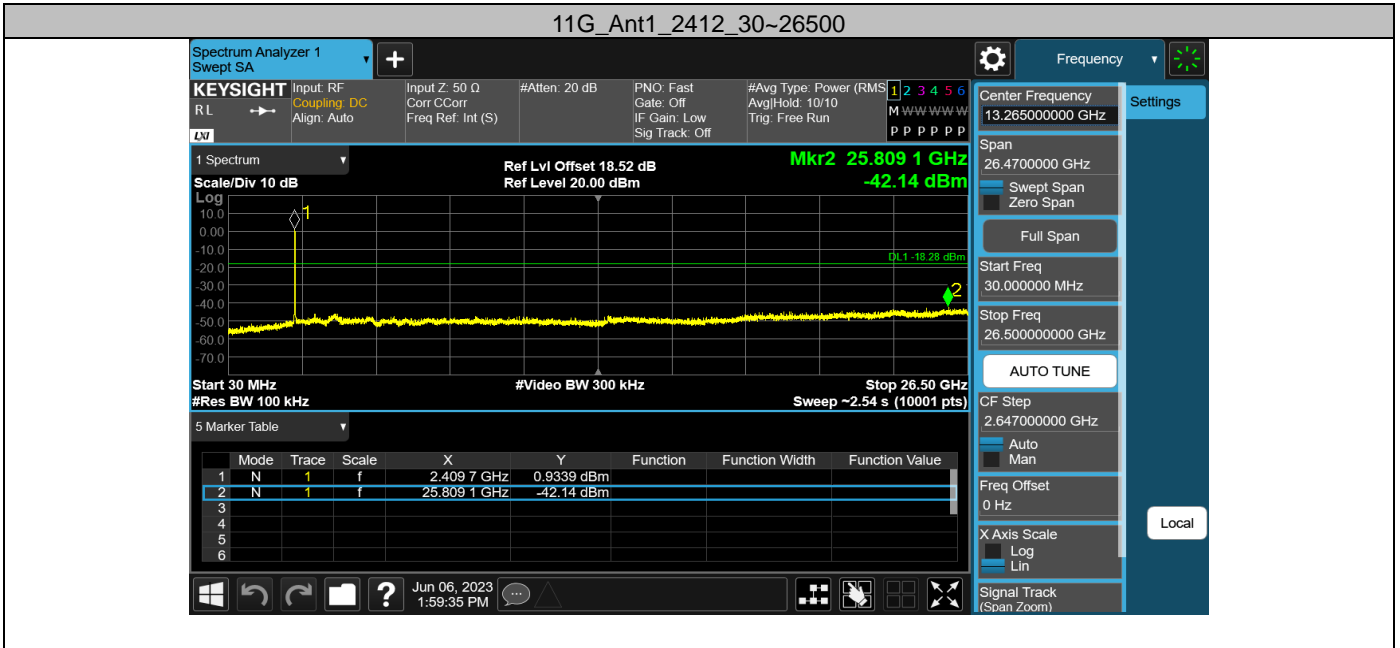


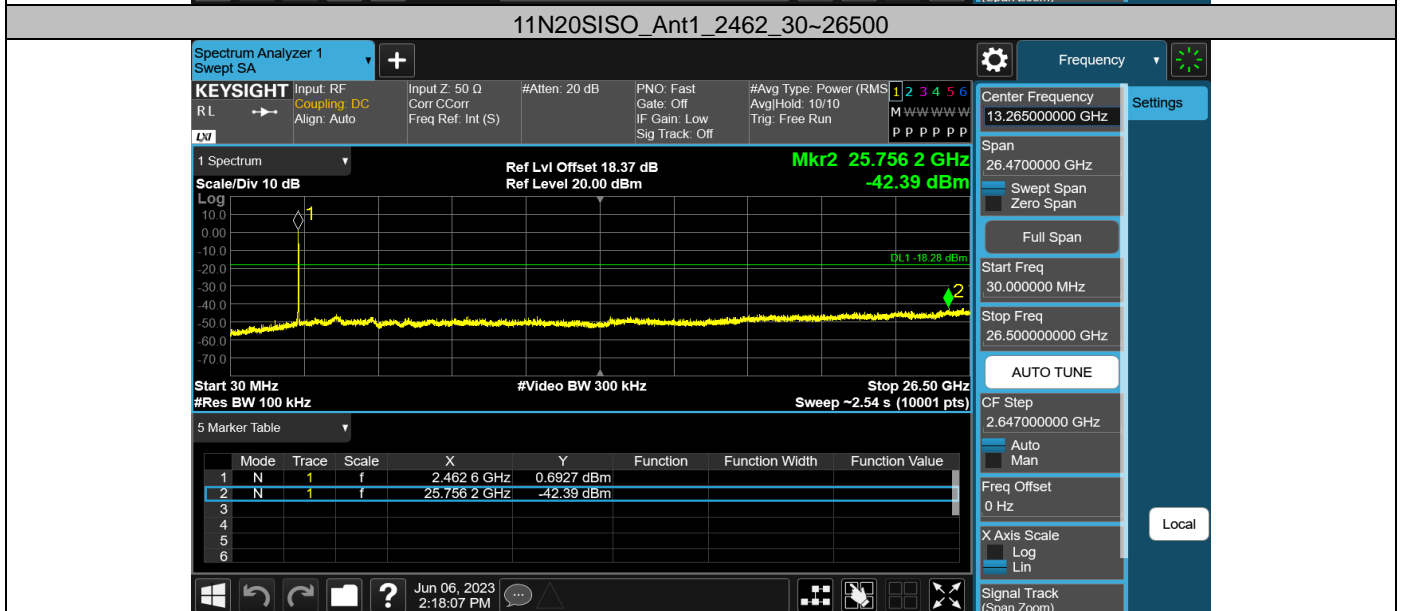
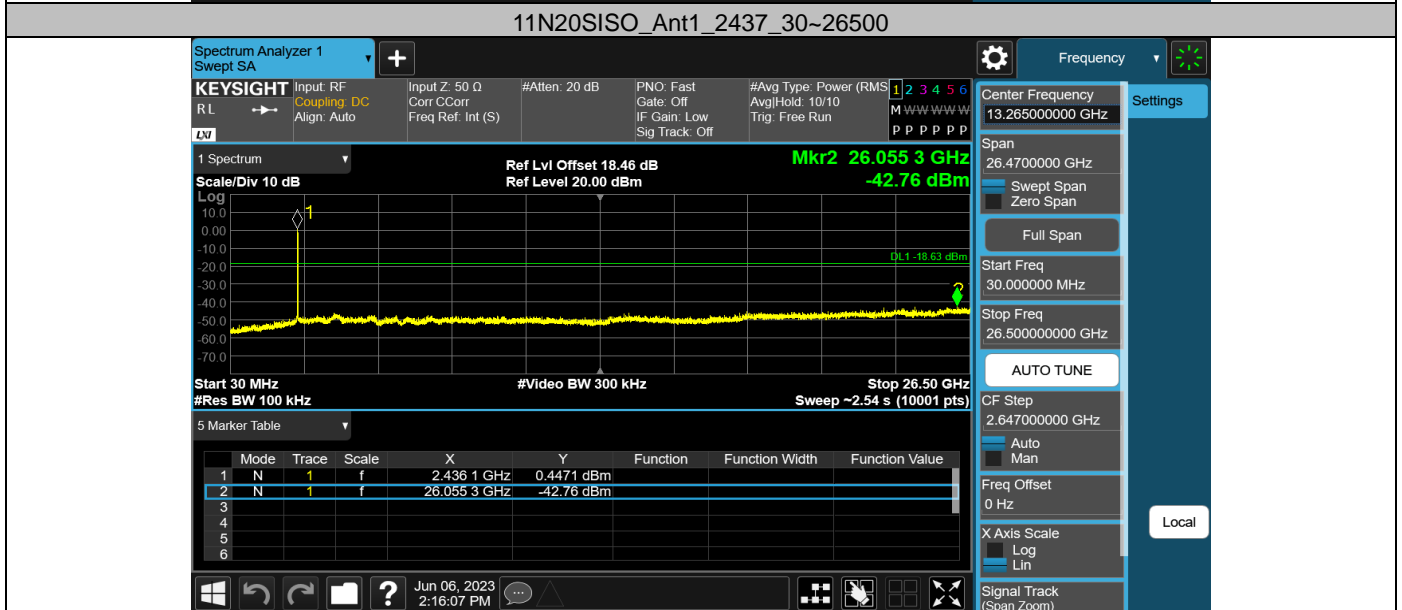
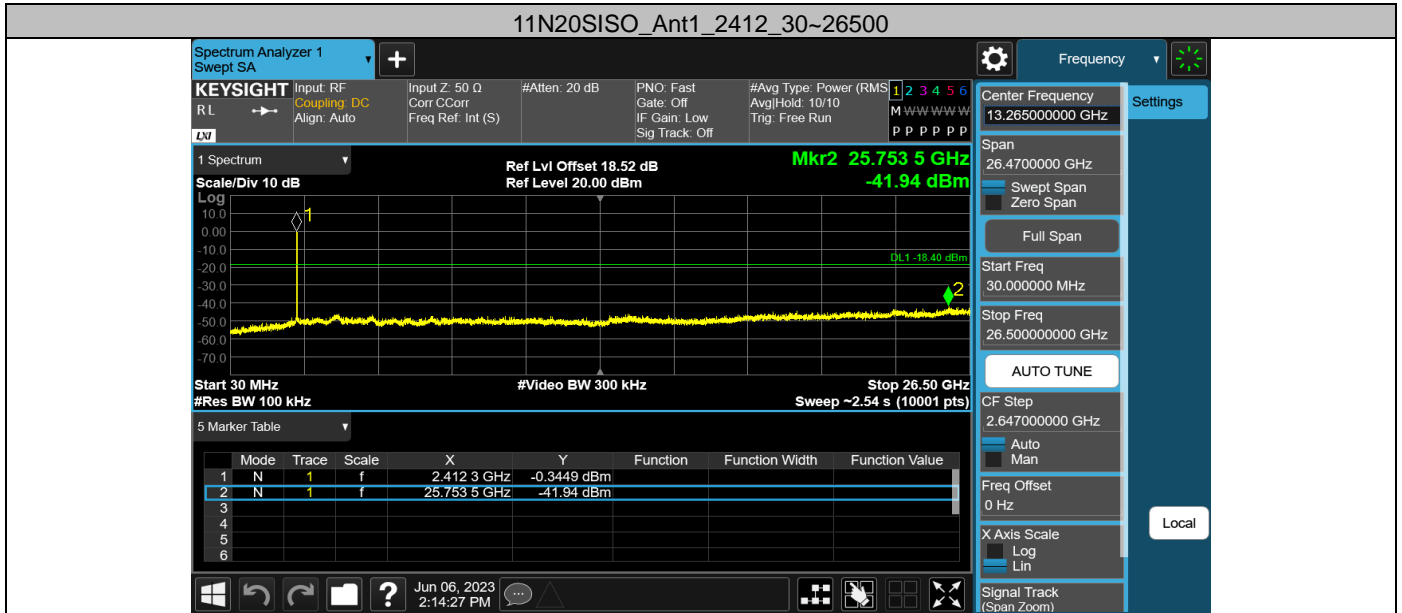
## Appendix G: Conducted Spurious Emission Test Result

Test Mode	Antenna	Frequency [MHz]	Freq Range [MHz]	Ref Level [dBm]	Result [dBm]	Limit [dBm]	Verdict
11B	Ant1	2412	30~26500	4.93	-42.2	≤-15.07	PASS
		2437	30~26500	5.26	-42.66	≤-14.74	PASS
		2462	30~26500	4.49	-42.78	≤-15.51	PASS
11G	Ant1	2412	30~26500	1.72	-42.14	≤-18.28	PASS
		2437	30~26500	1.70	-42.99	≤-18.3	PASS
		2462	30~26500	1.49	-42.38	≤-18.51	PASS
11N20SISO	Ant1	2412	30~26500	1.60	-41.94	≤-18.4	PASS
		2437	30~26500	1.37	-42.76	≤-18.63	PASS
		2462	30~26500	1.72	-42.39	≤-18.28	PASS

Test Graphs







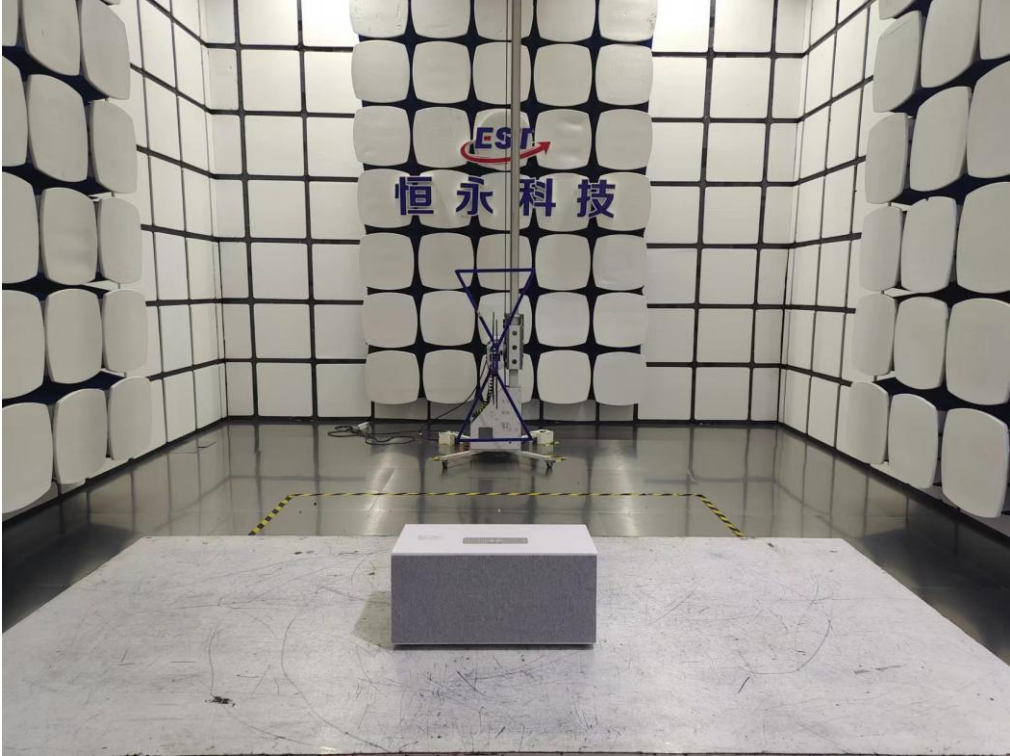
# 12. TEST SETUP PHOTO

Conducted Test

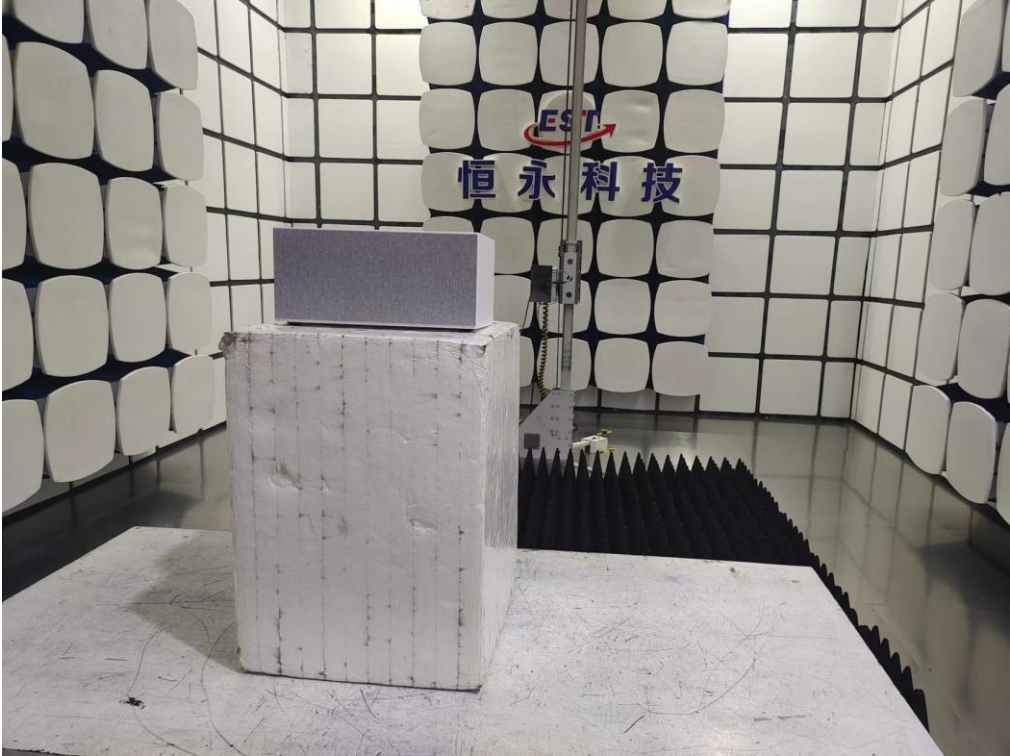




**Radiated Test (Below 1GHz)**

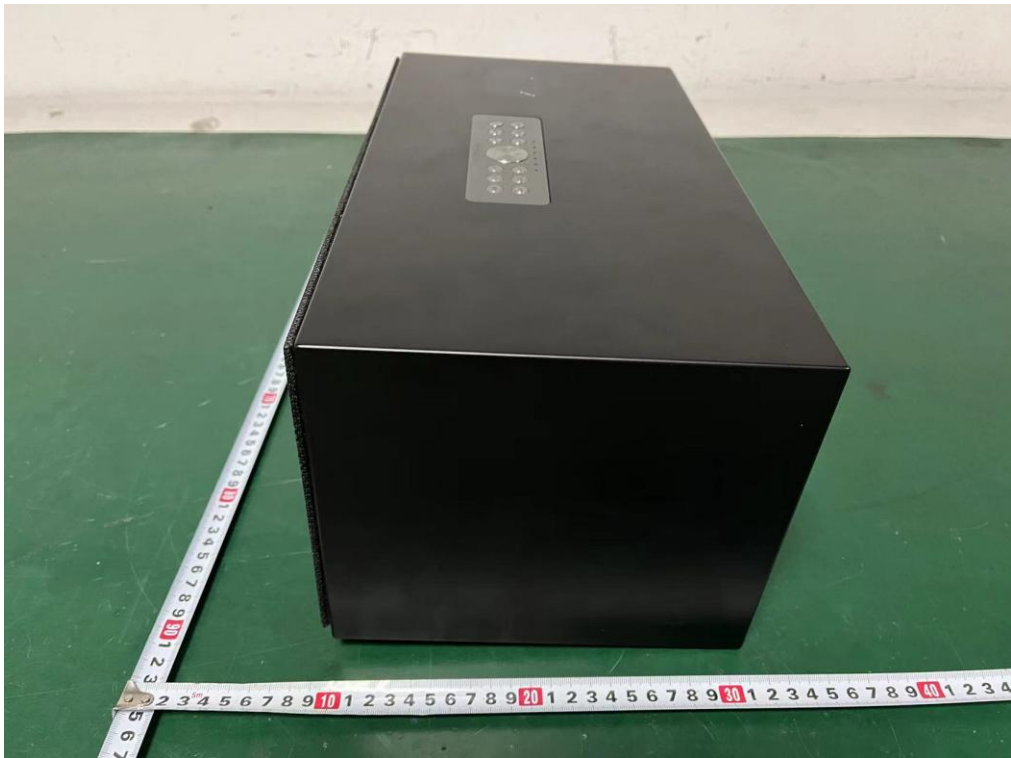


**Radiated Test (Above 1GHz)**



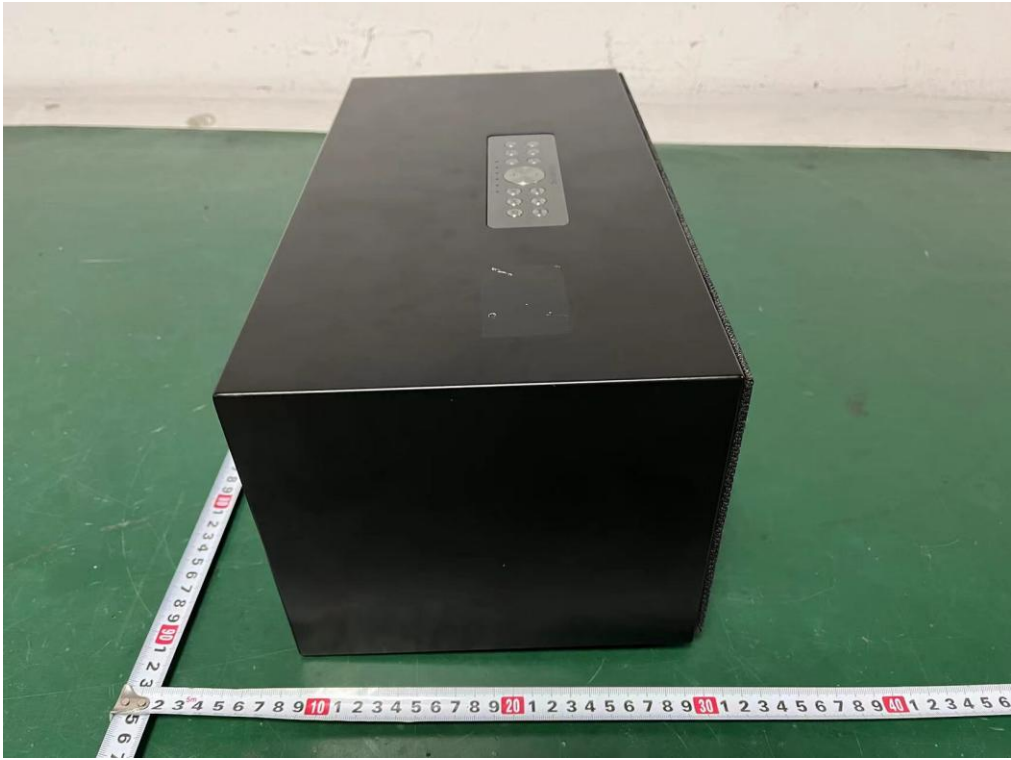
### 13. EUT PHOTO

External Photos  
M/N: C20





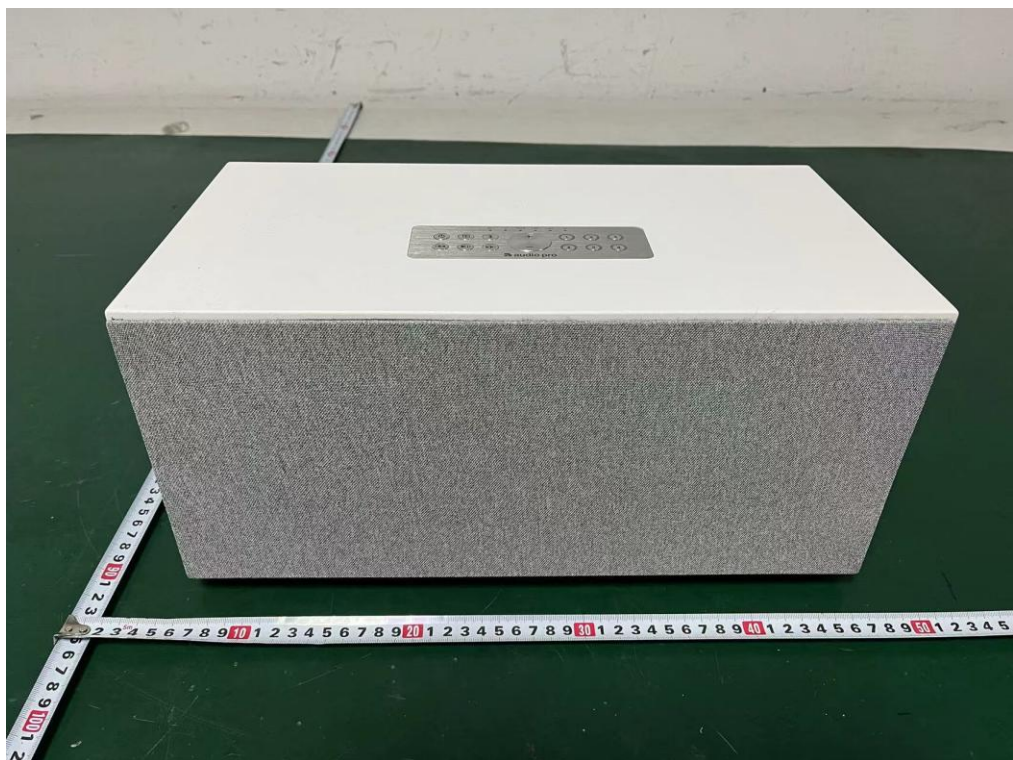
**External Photos**  
M/N: C20



**External Photos**  
M/N: C20

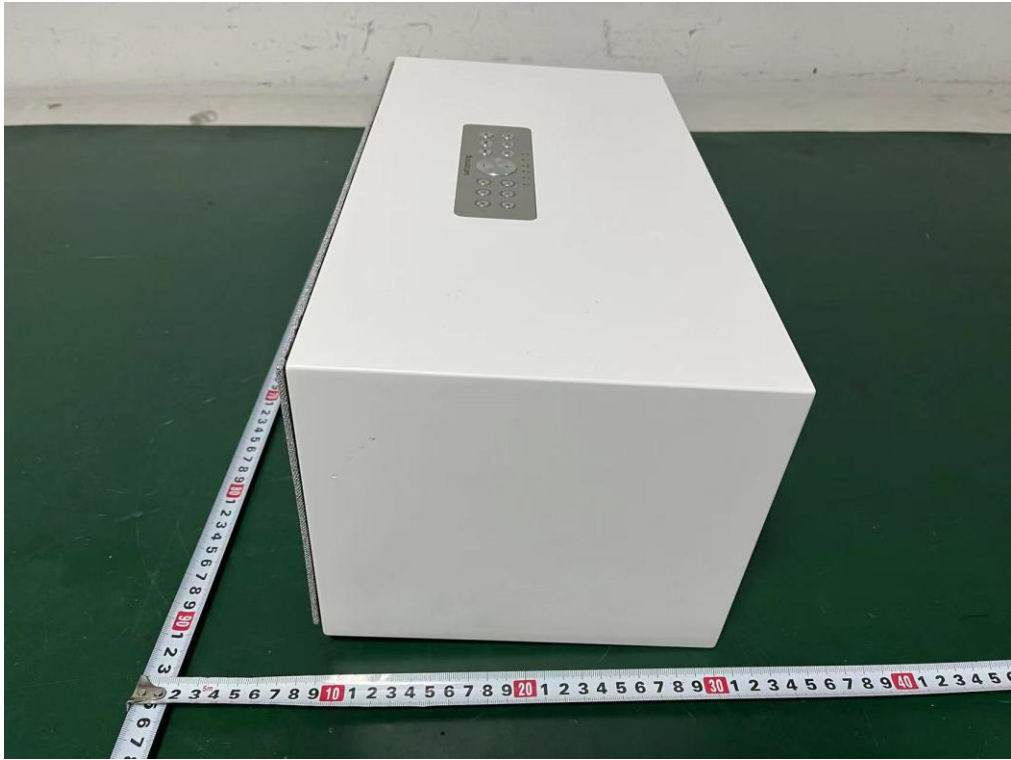


**External Photos**  
M/N: C20

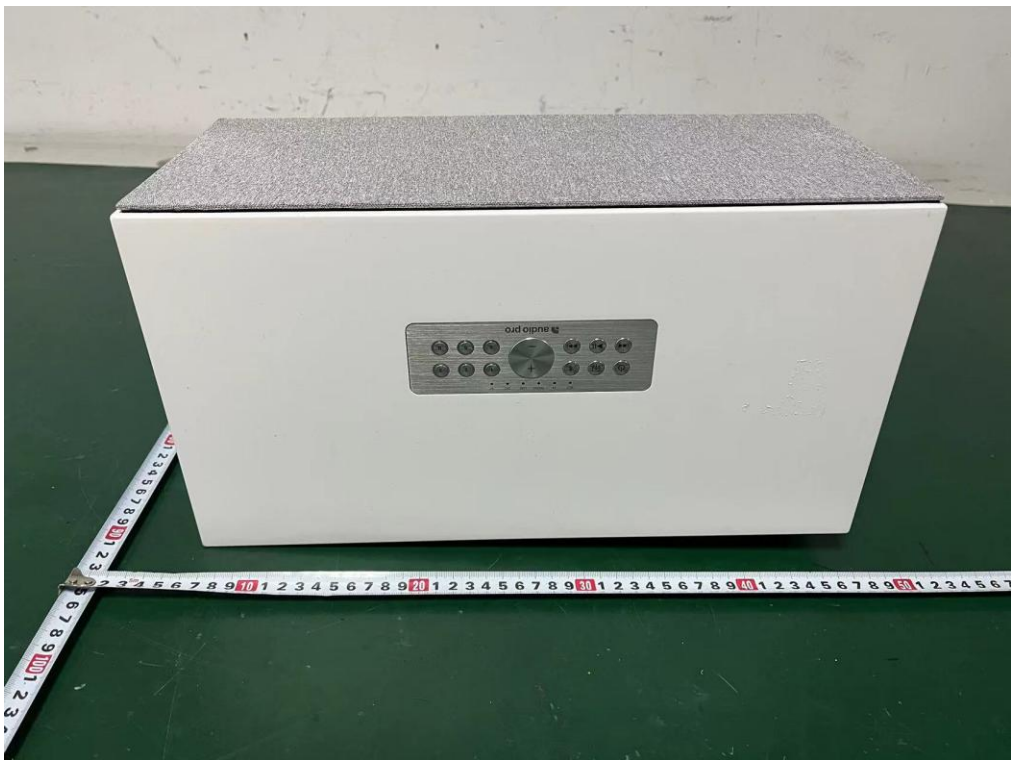
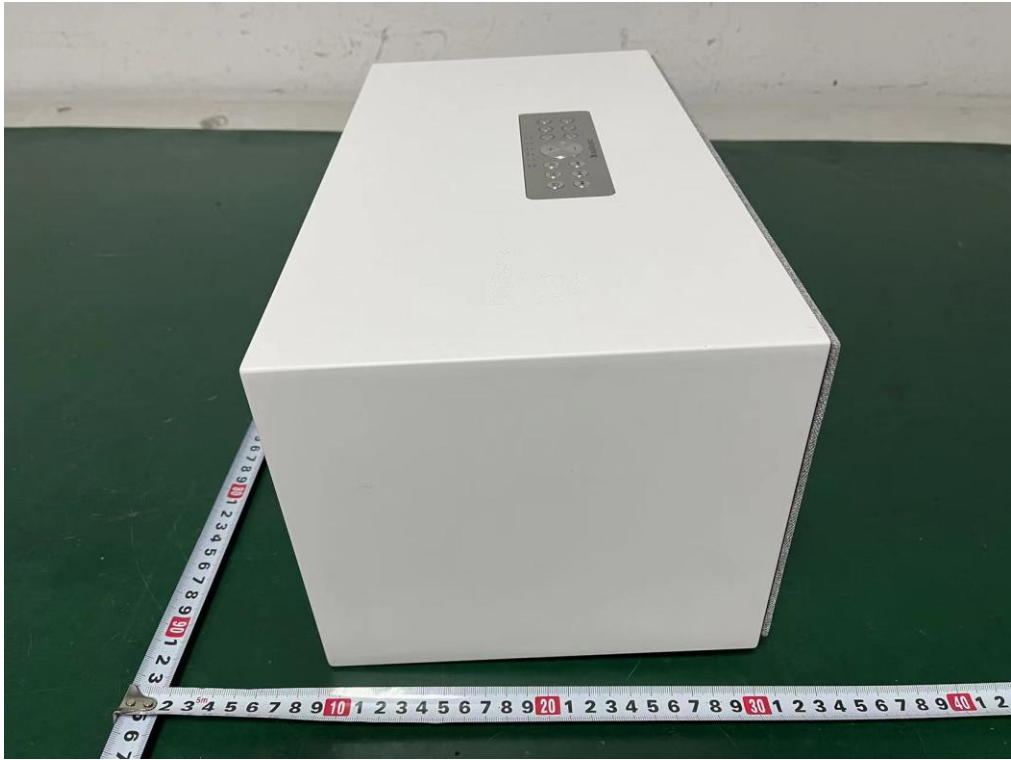




**External Photos**  
M/N: C20



**External Photos**  
M/N: C20





**External Photos**  
M/N: C20



**Internal Photos**  
M/N: C20



**Internal Photos**  
M/N: C20

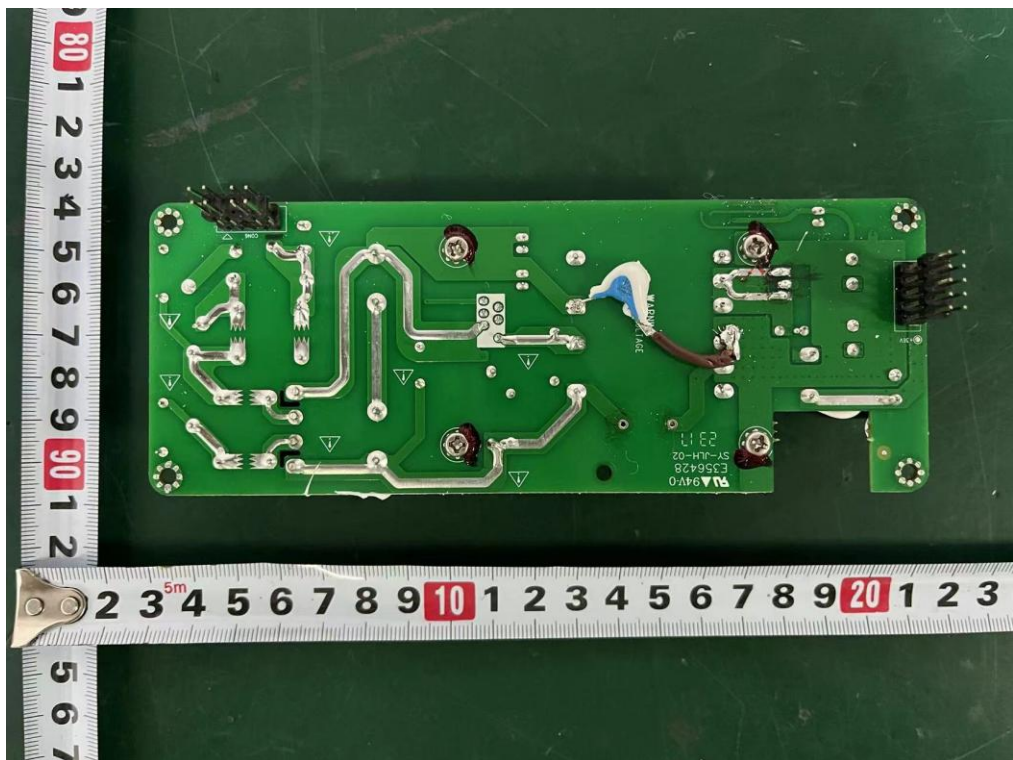




**Internal Photos**  
M/N: C20

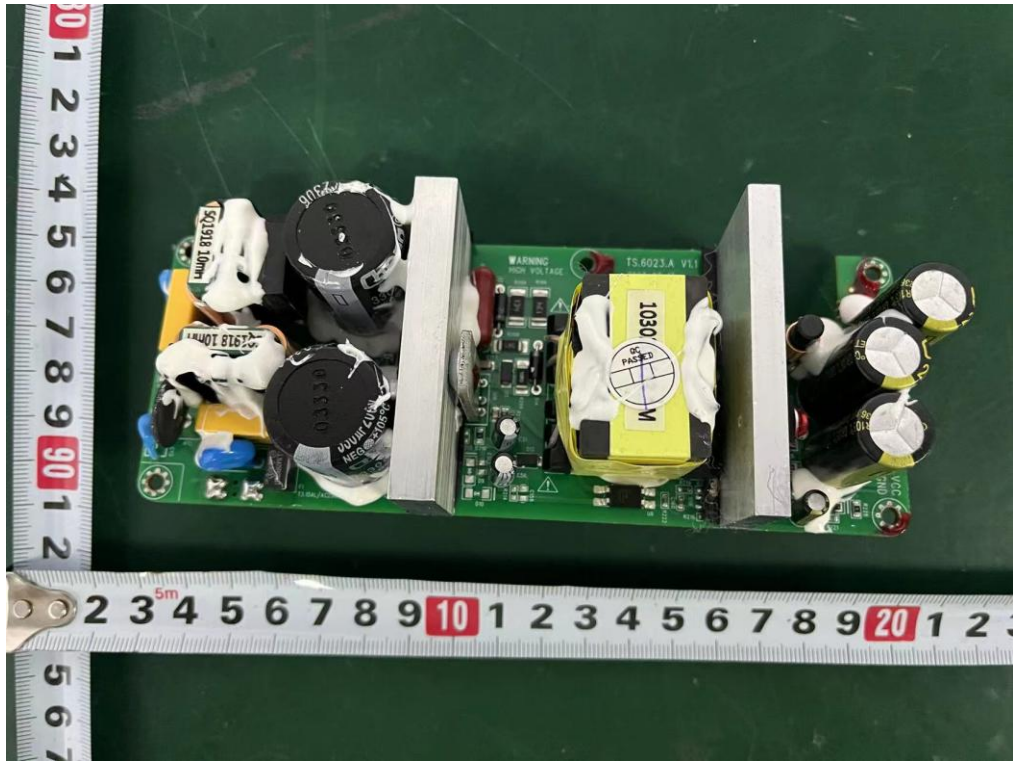


**Internal Photos**  
M/N: C20

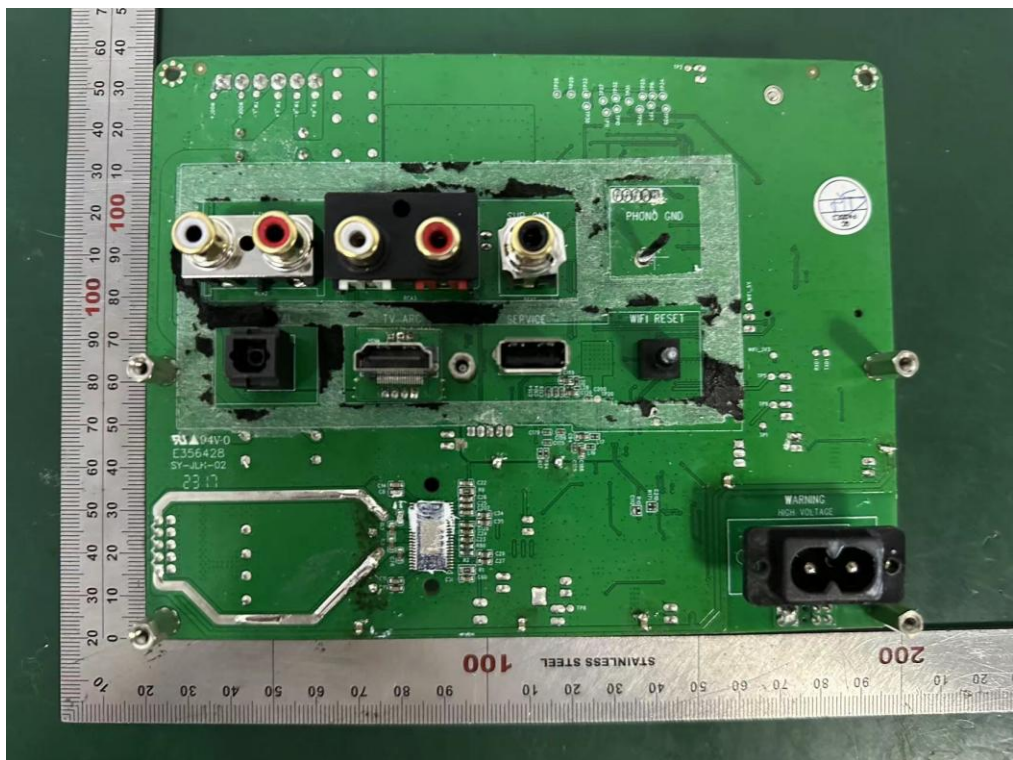
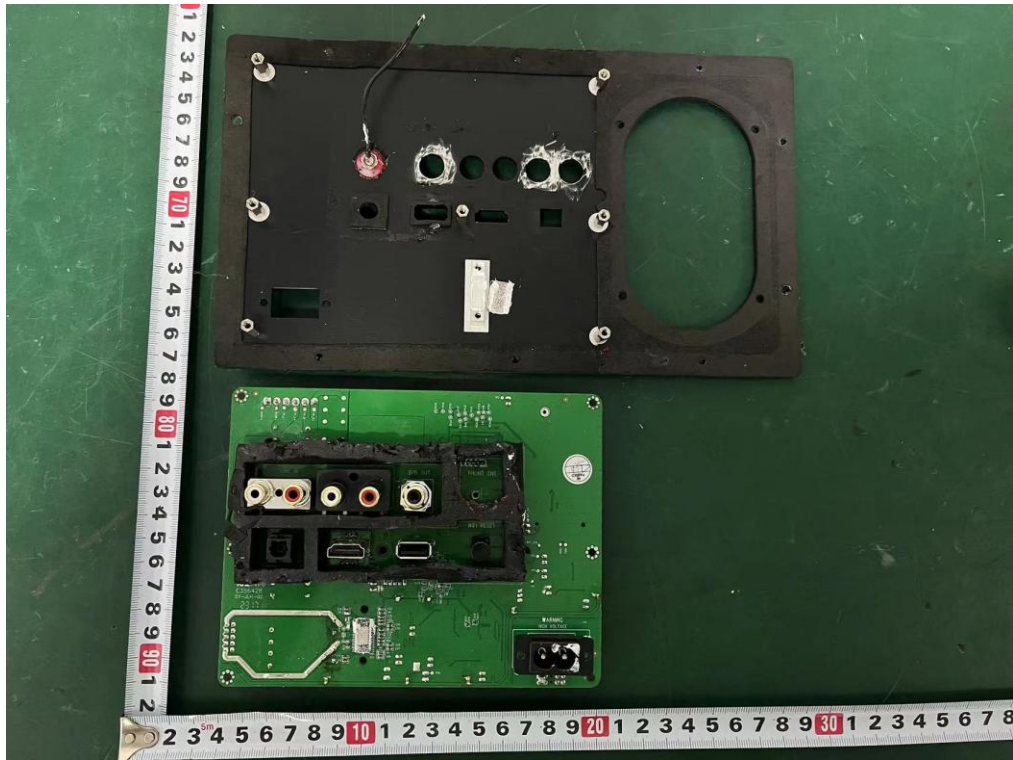




Internal Photos  
M/N: C20

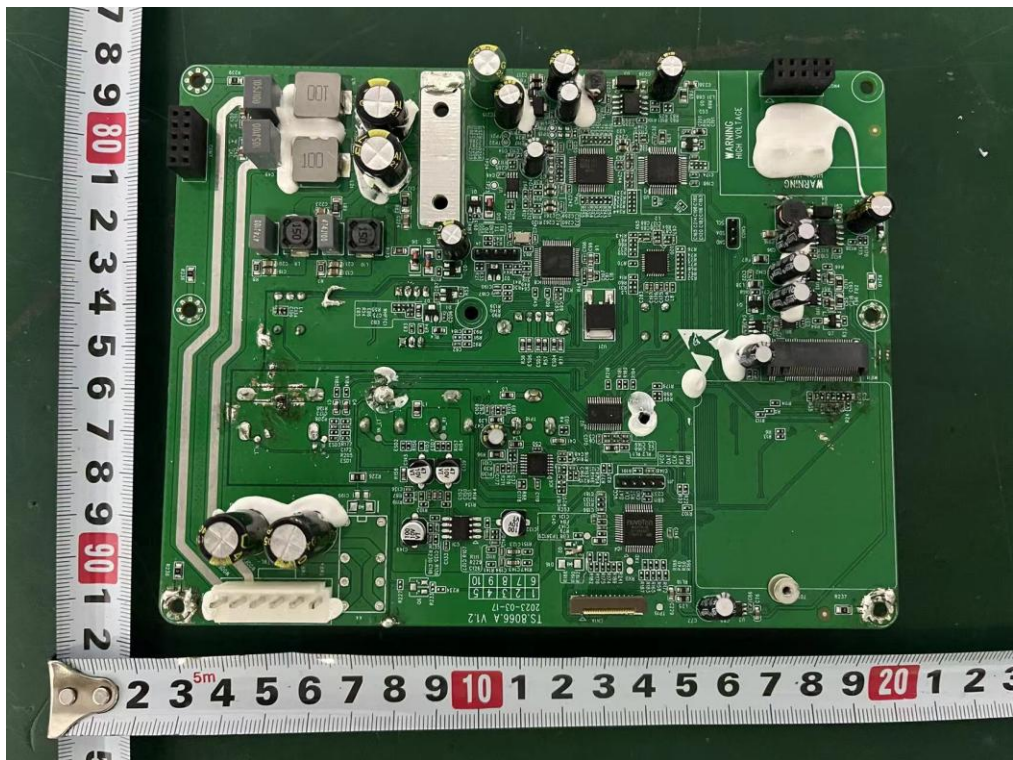
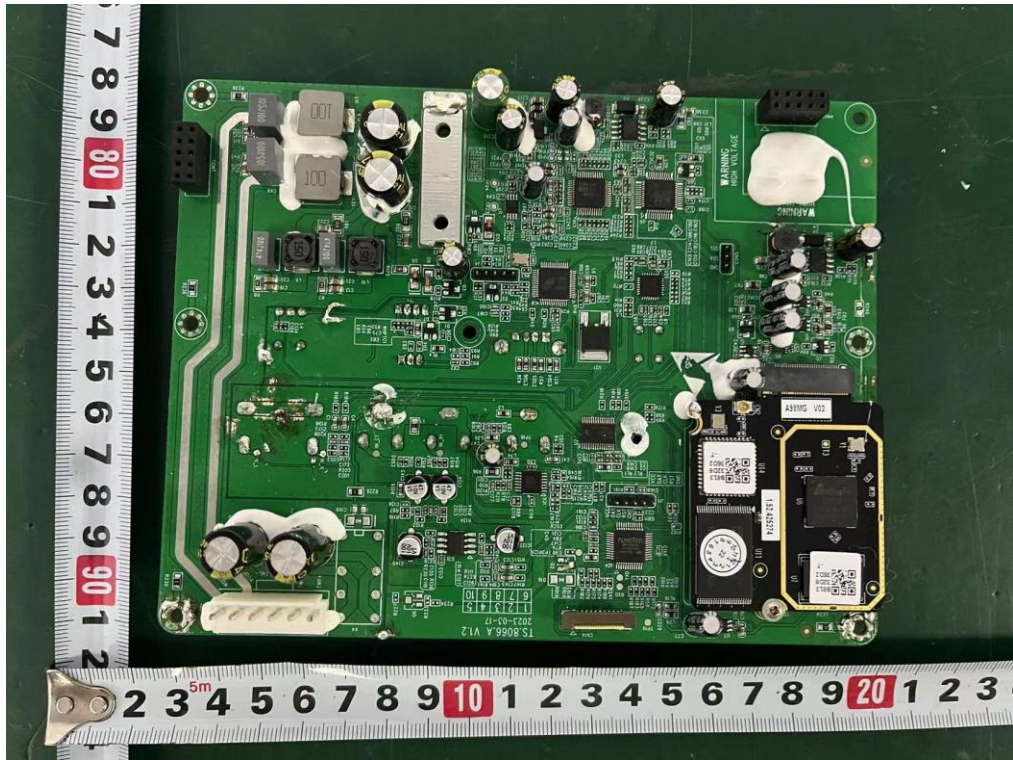


**Internal Photos**  
M/N: C20



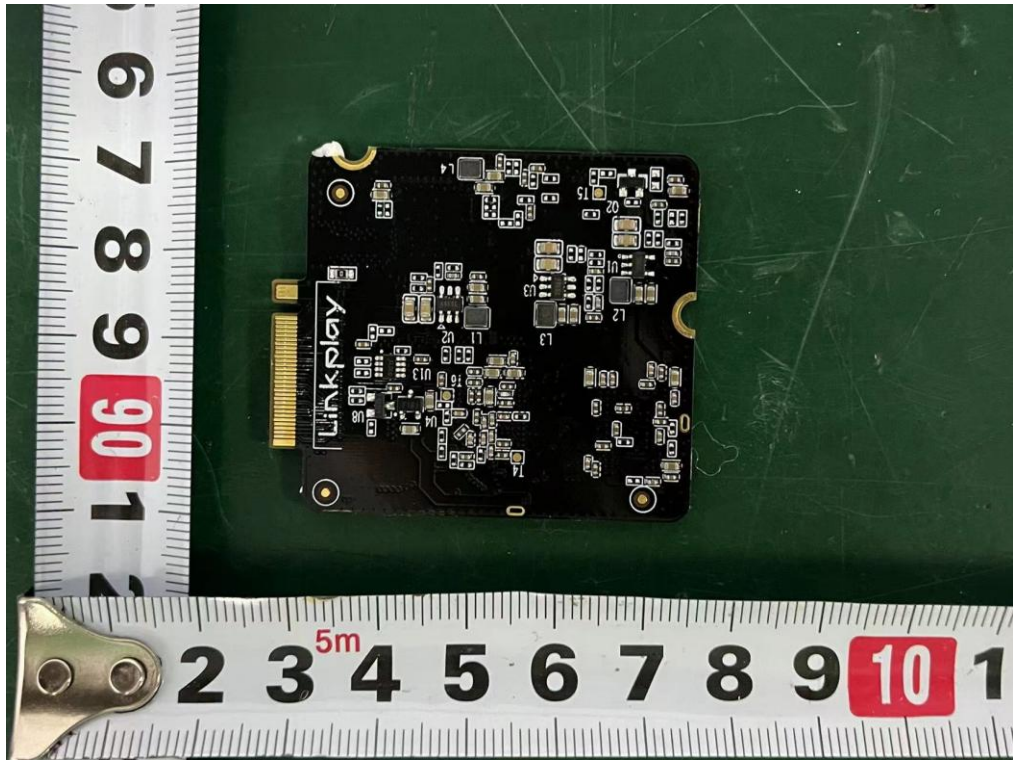


Internal Photos  
M/N: C20



Internal Photos

M/N: C20



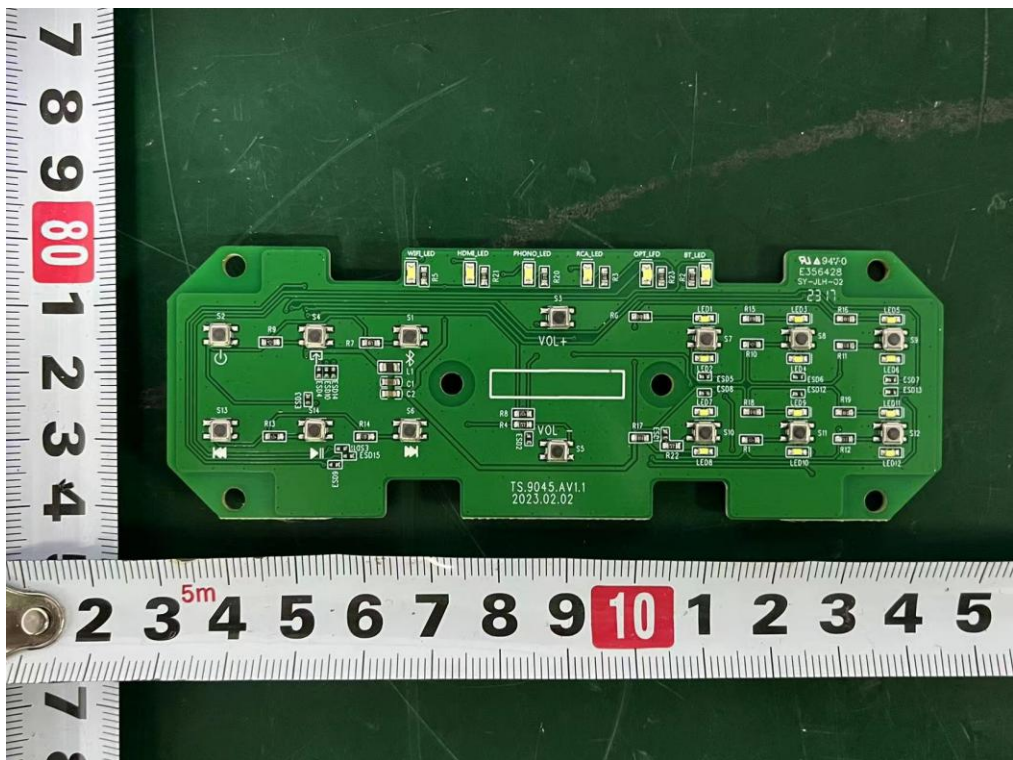
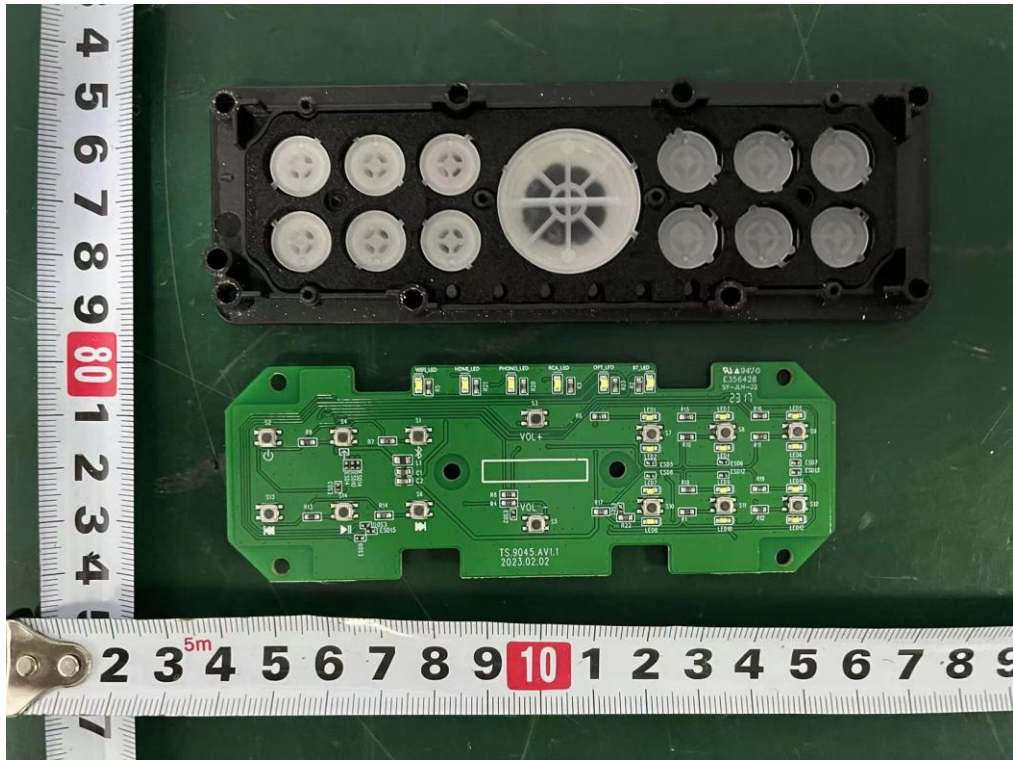


**Internal Photos**  
M/N: C20

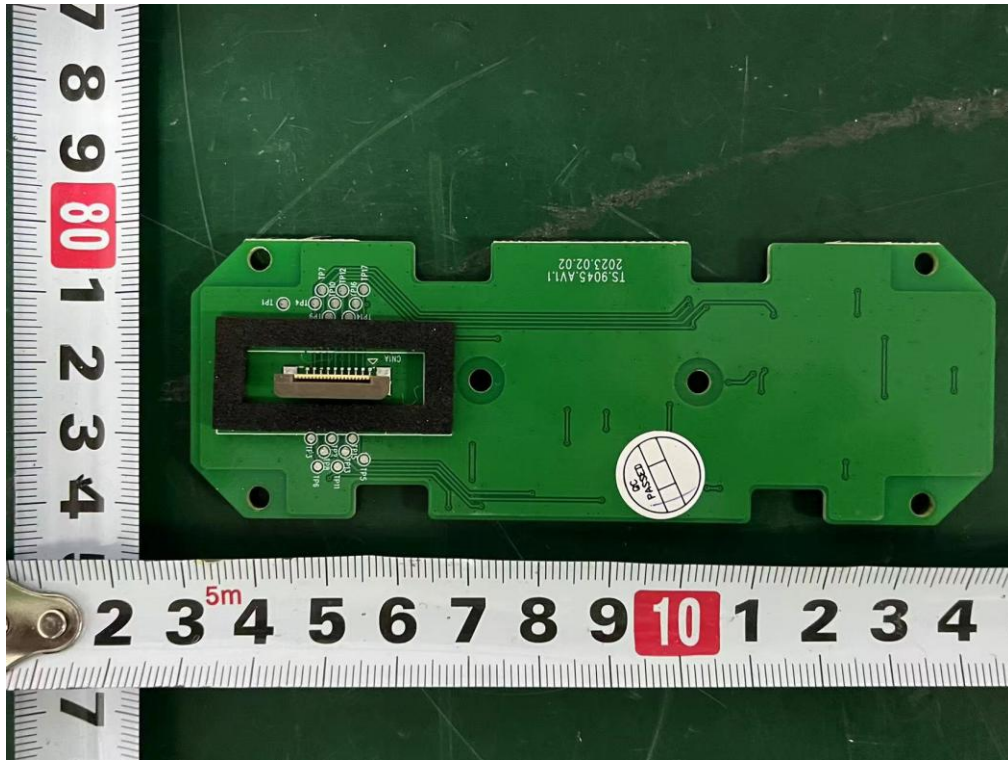




Internal Photos  
M/N: C20



**Internal Photos**  
M/N: C20



**End of Test Report**