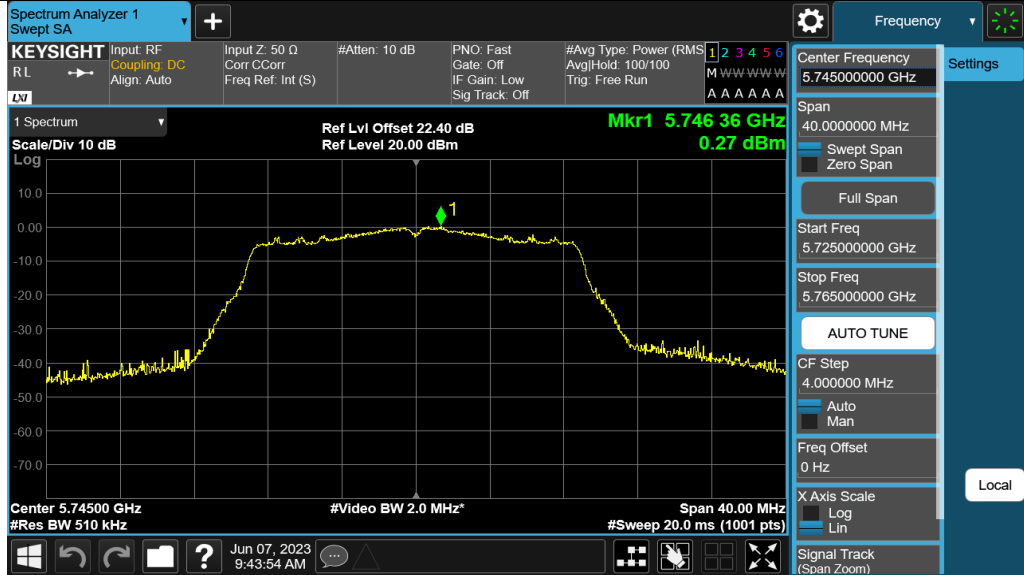
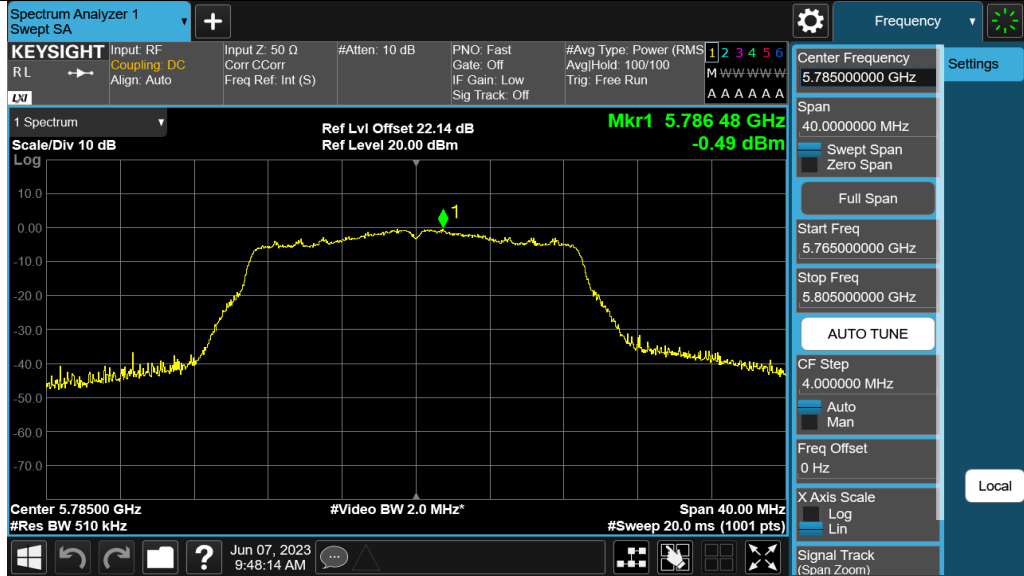


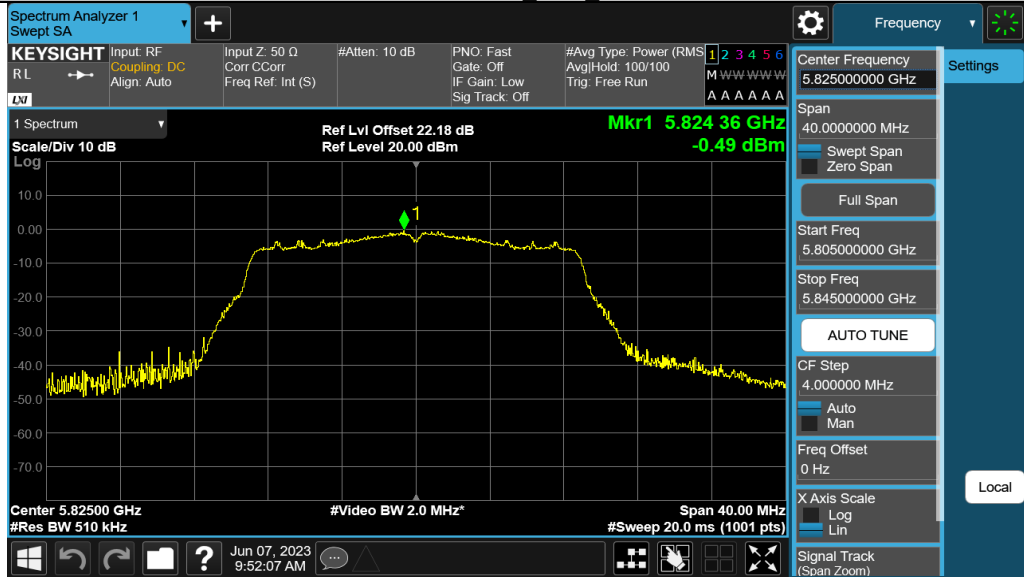
11AC20SISO Ant1 5745

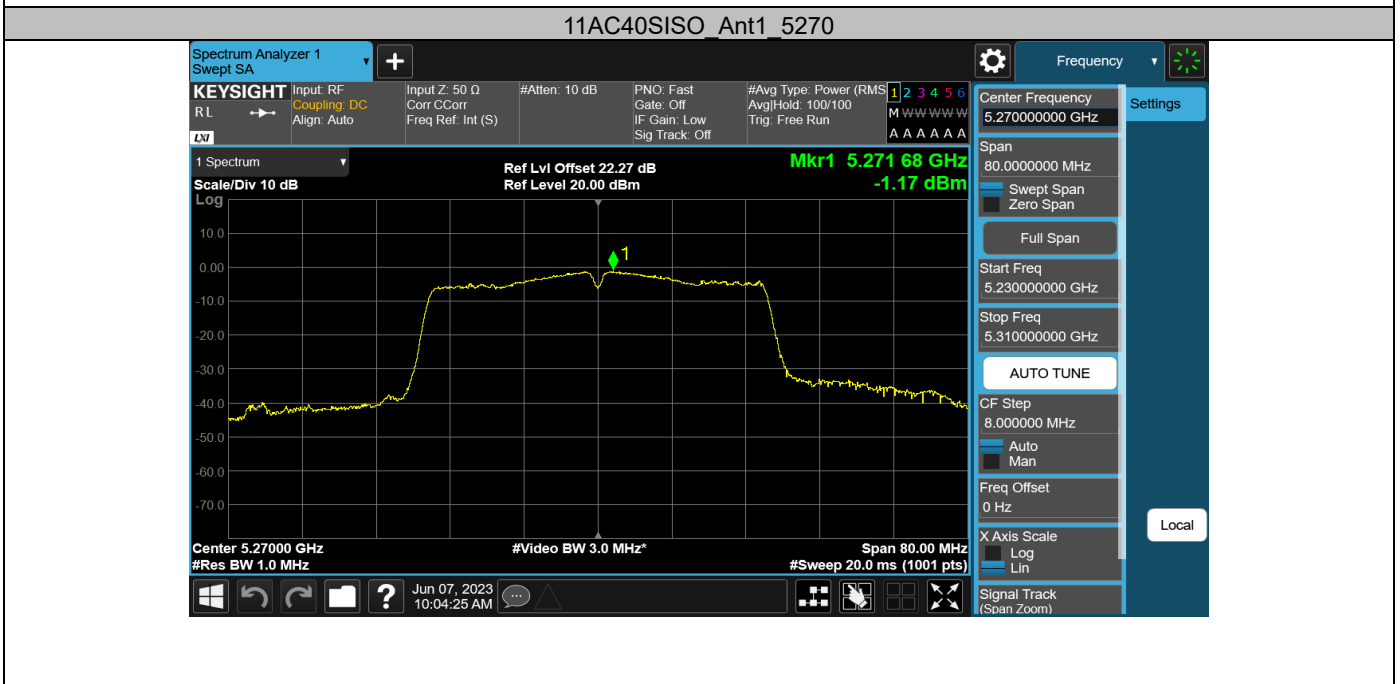
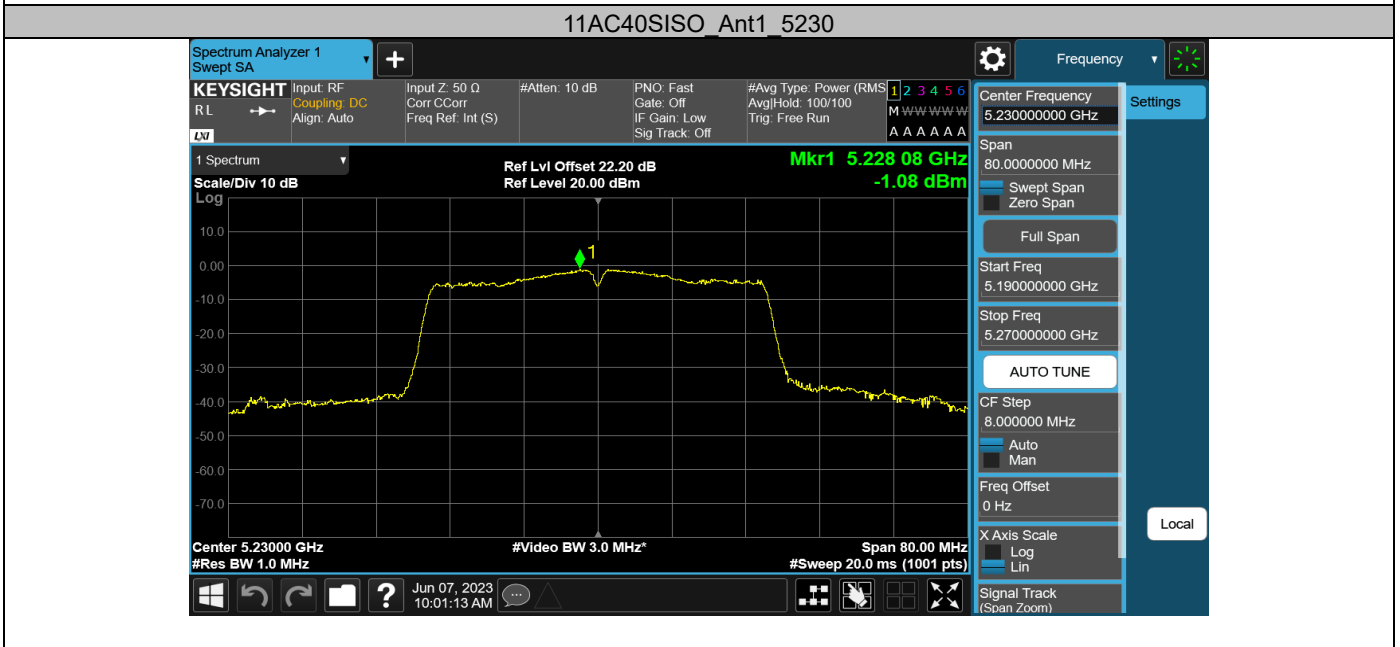
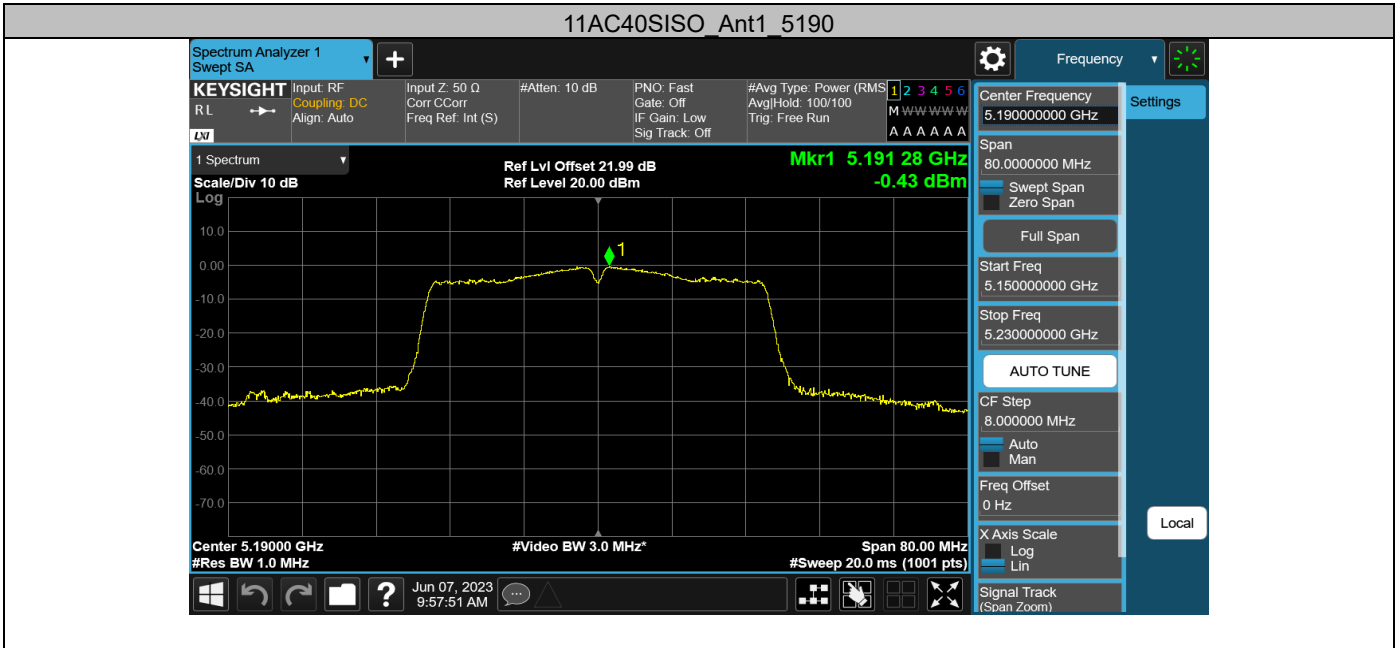


11AC20SISO Ant1 5785



11AC20SISO Ant1 5825

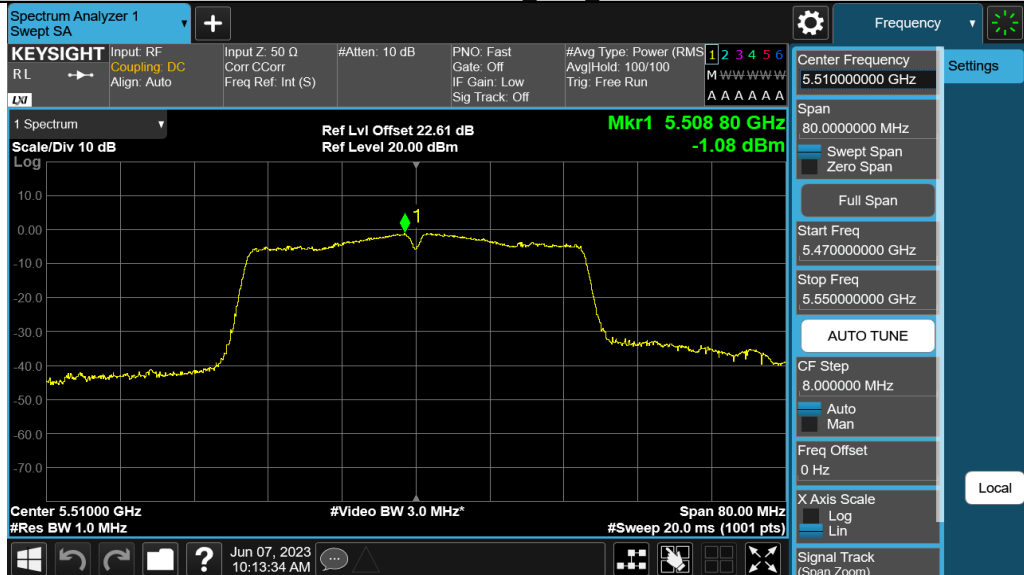




11AC40SISO Ant1 5310

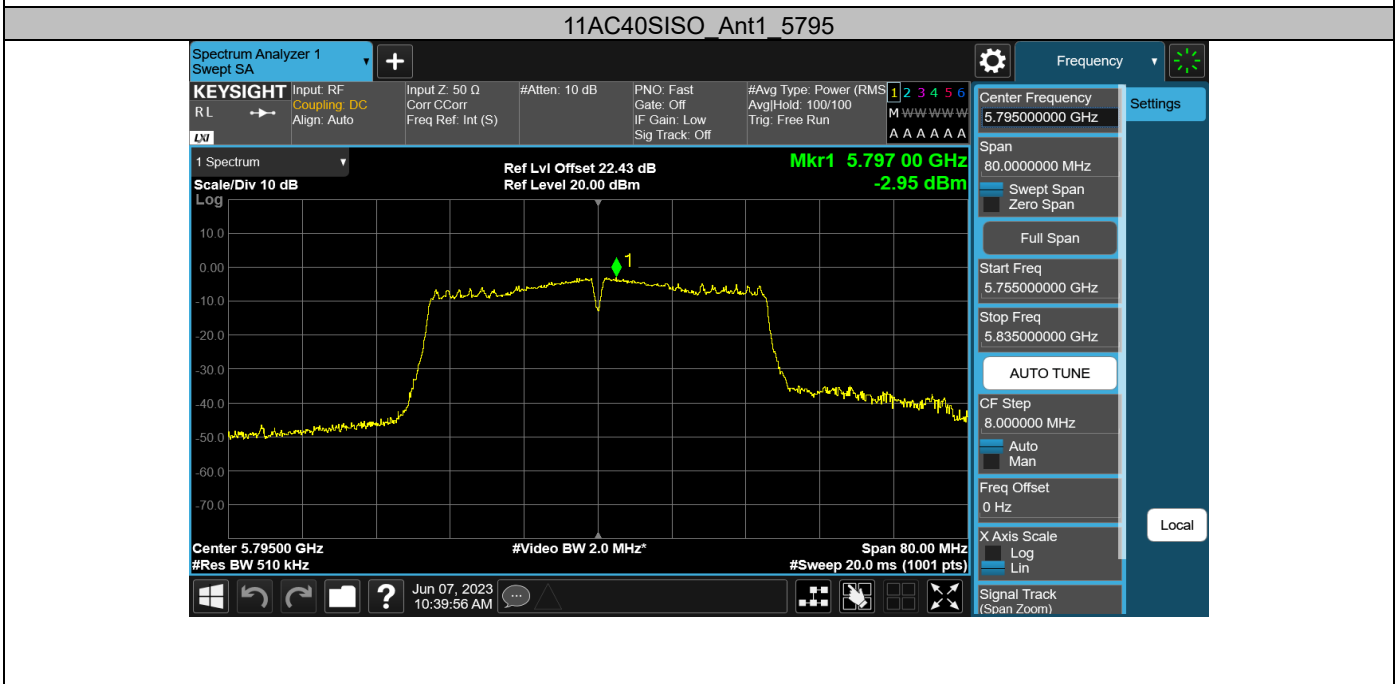
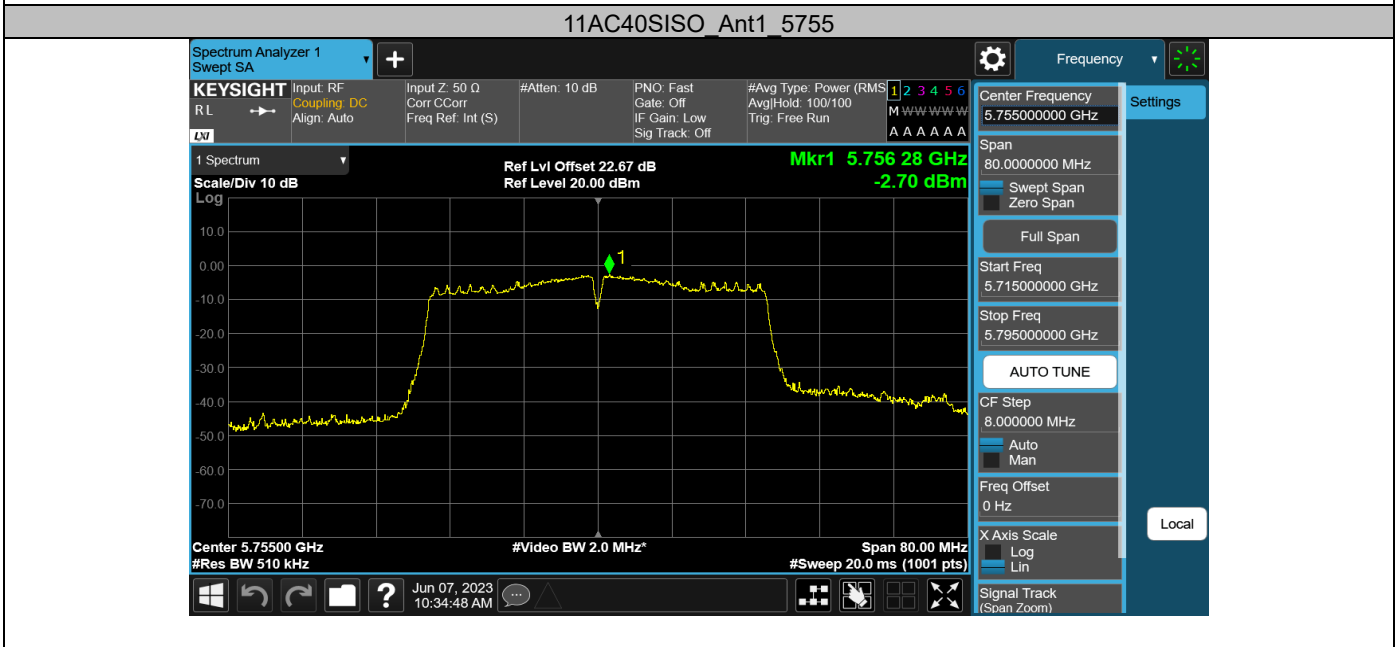
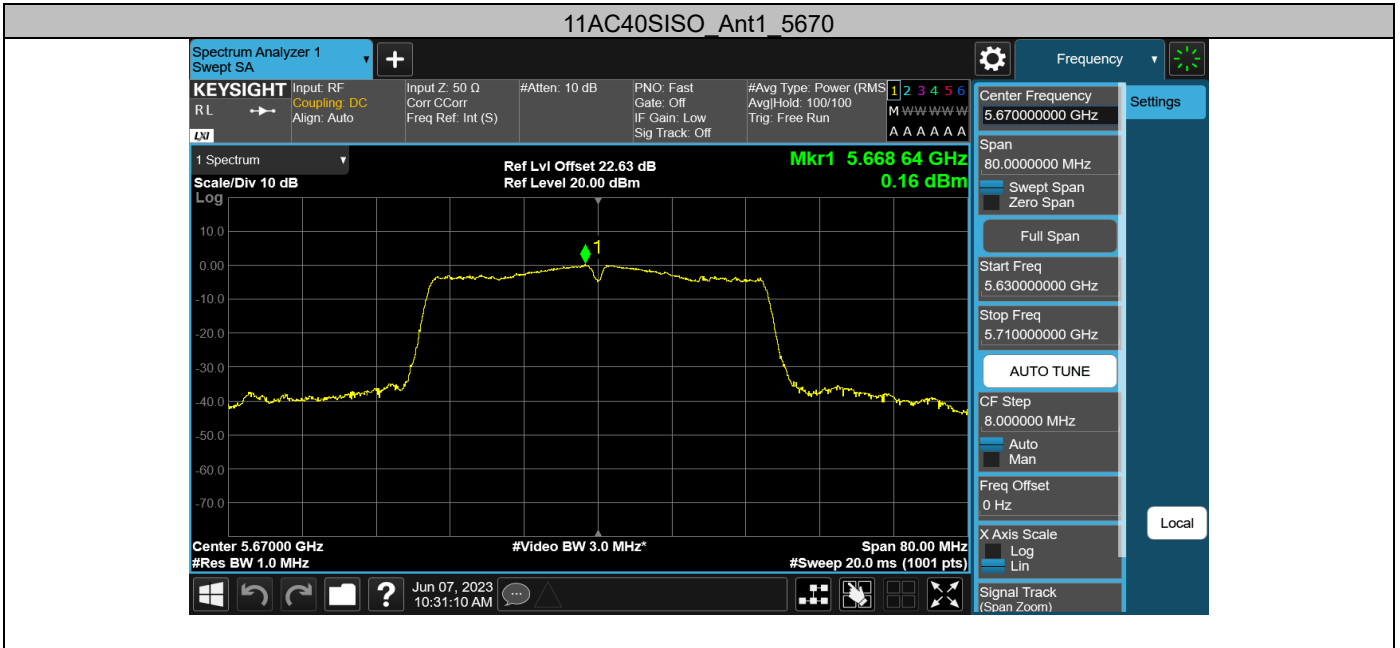


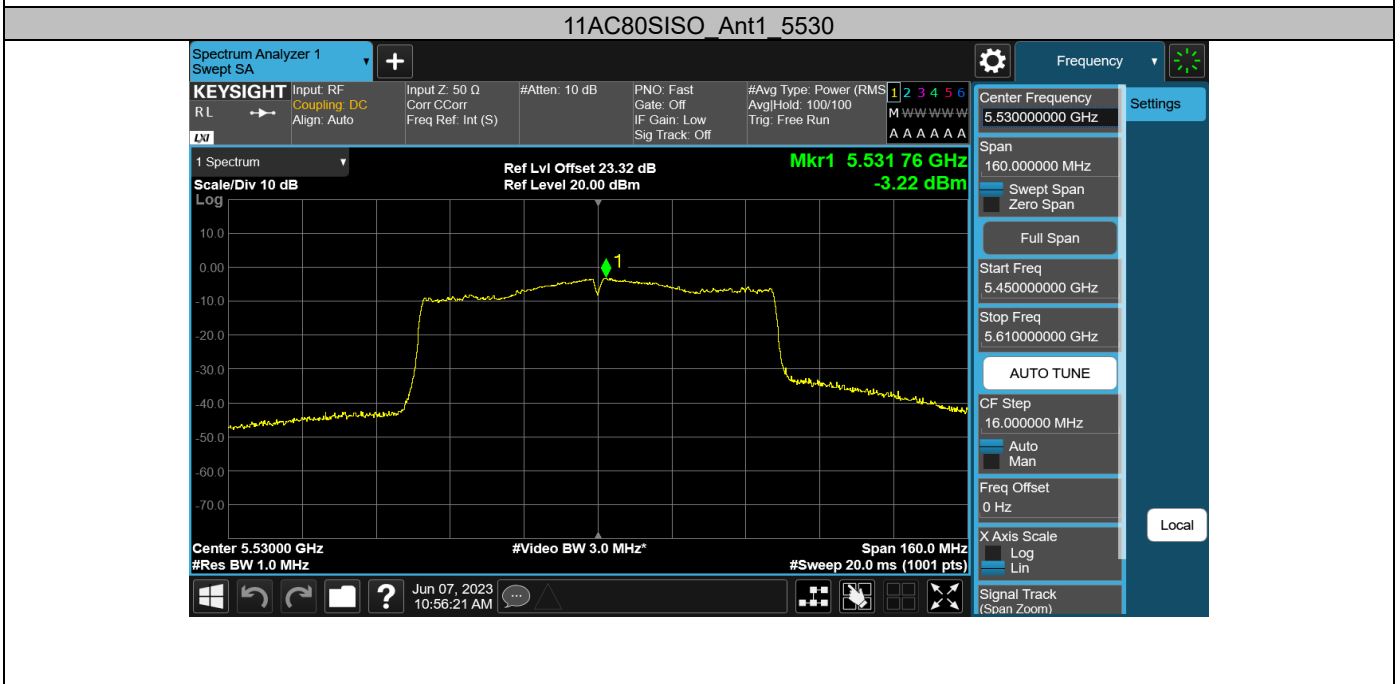
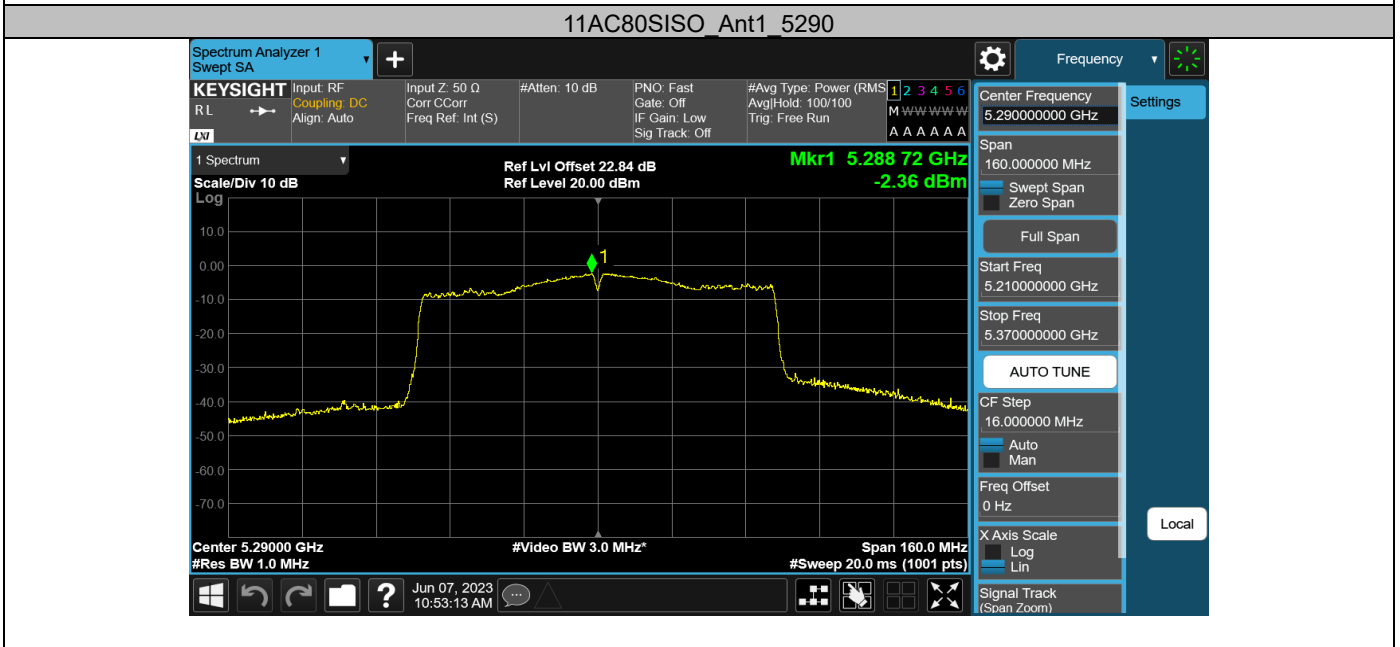
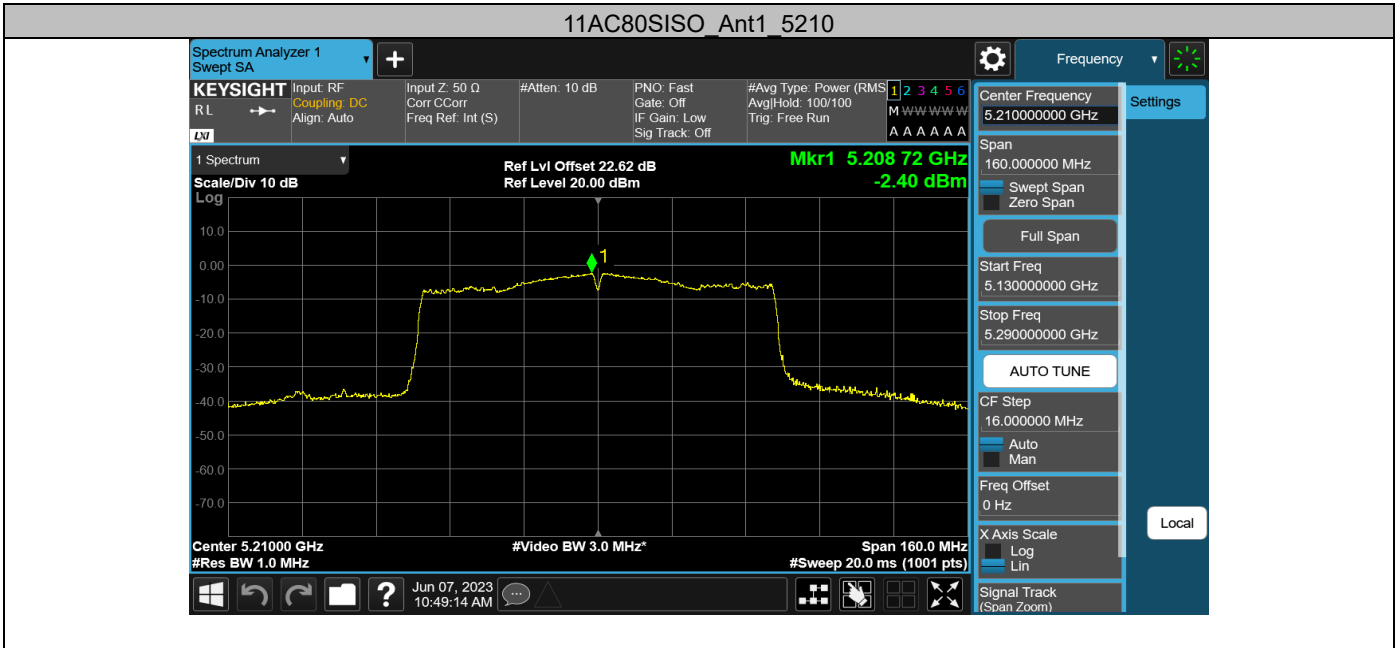
11AC40SISO Ant1 5510

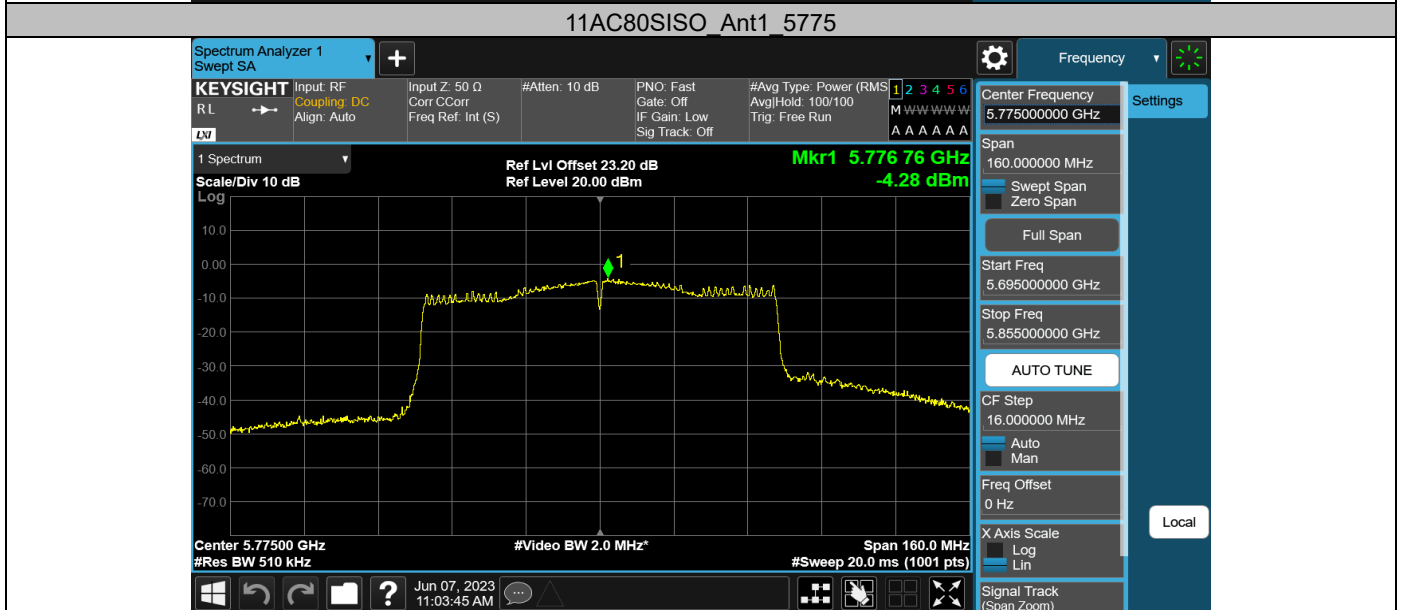
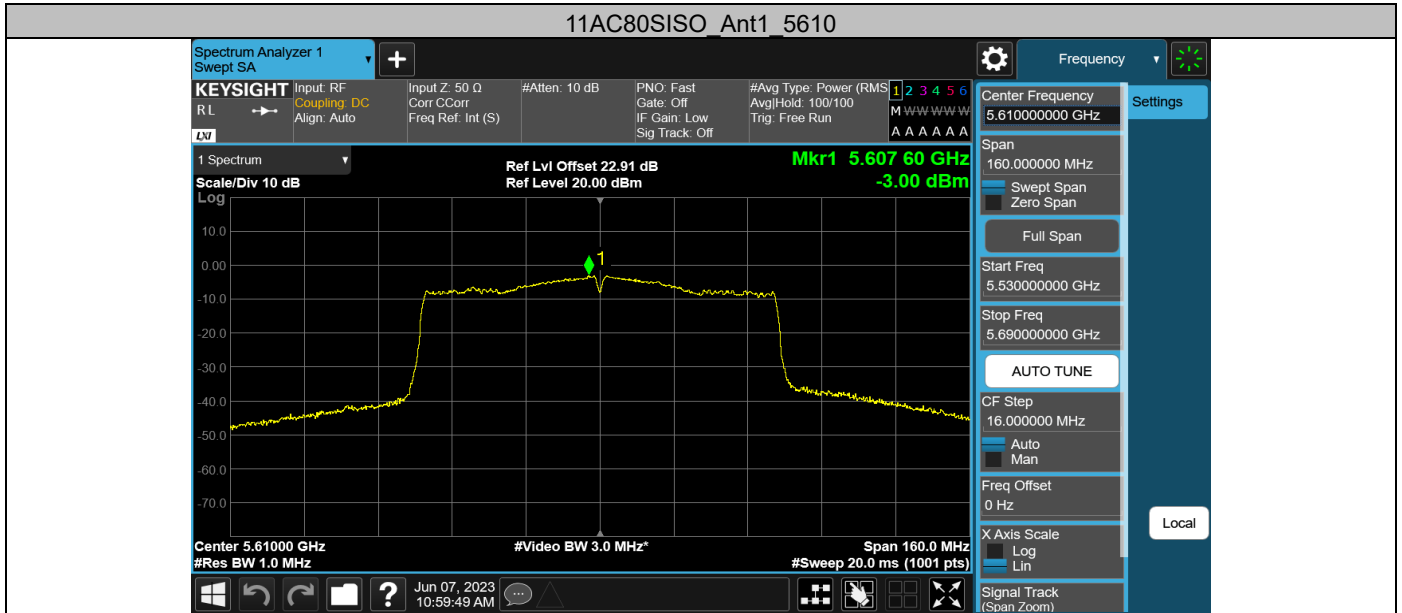


11AC40SISO Ant1 5590





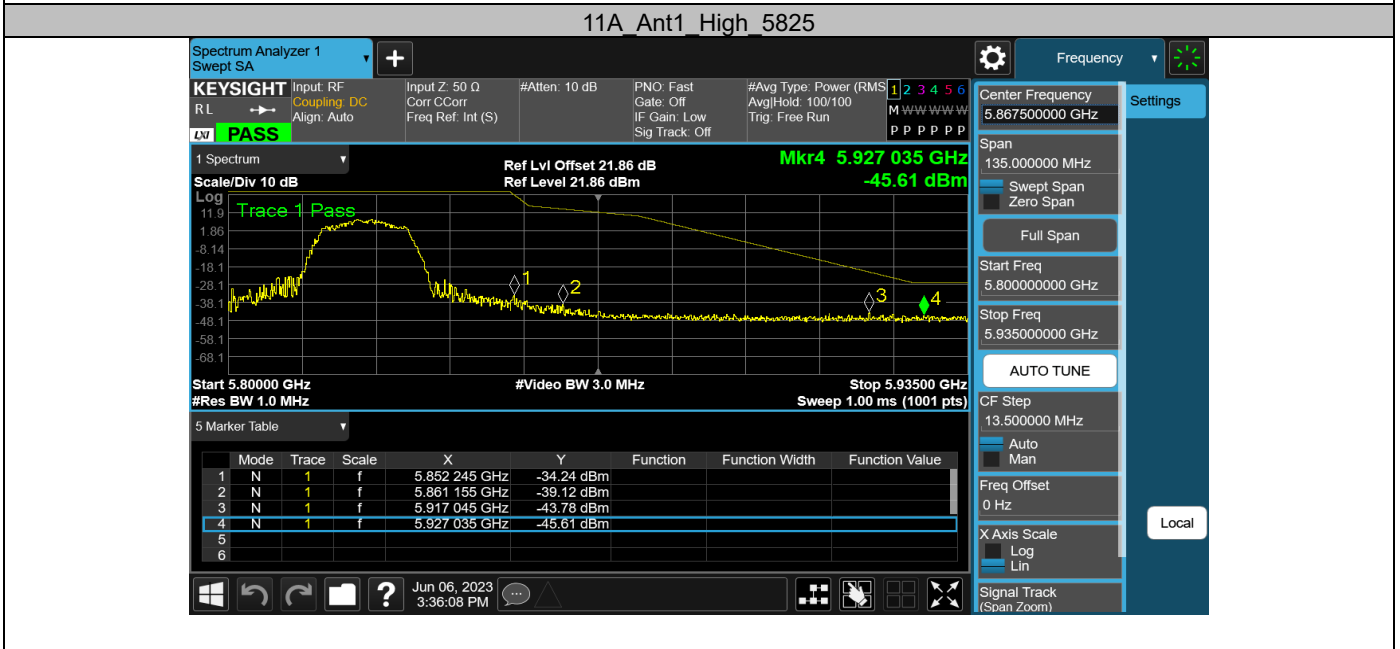
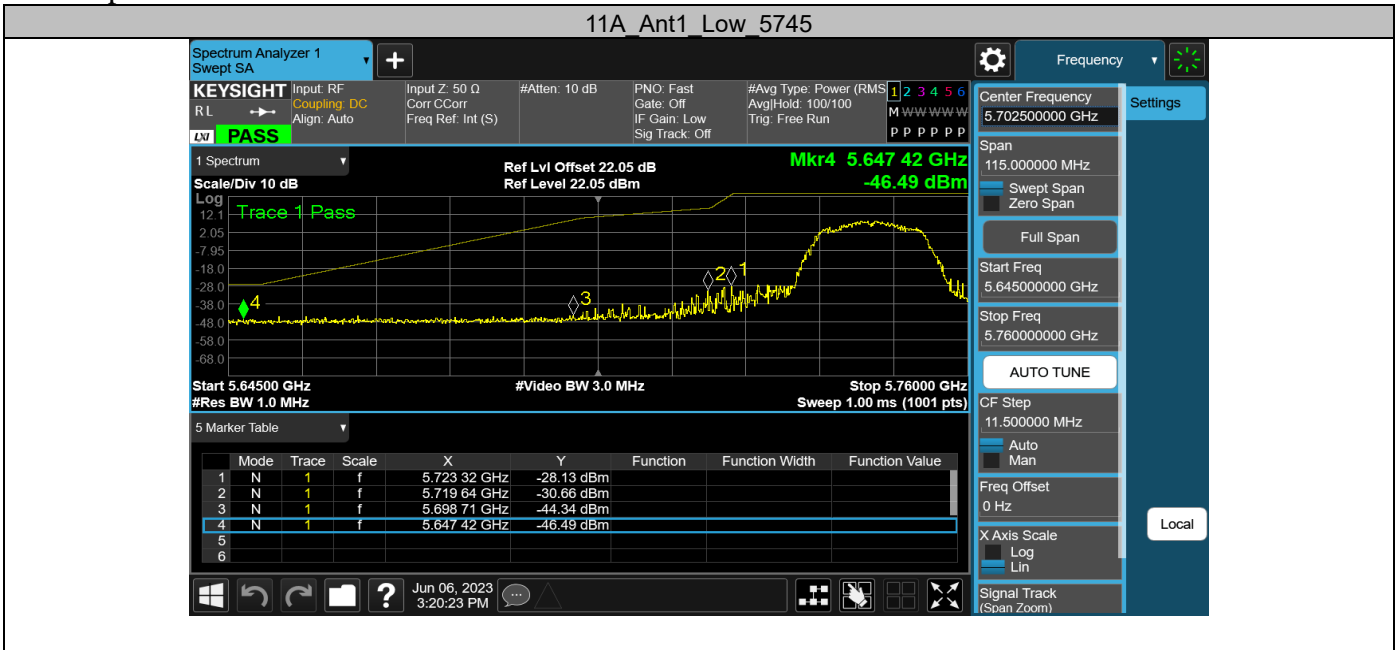




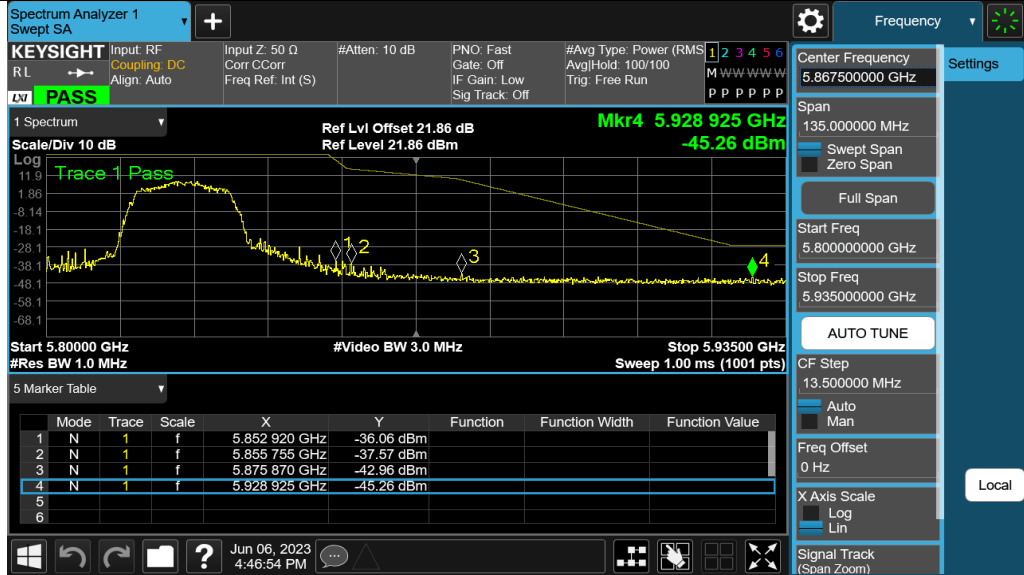
Appendix G: Band edge measurements
Test Result B4

Test Mode	Antenna	Ch Name	Frequency [MHz]	Freq Range [MHz]	Result [dBm]	Limit [dBm]	Verdict
11A	Ant1	Low	5745	5650~5700	-44.34	≤9.04	PASS
				5700~5720	-30.66	≤15.50	PASS
				5720~5725	-28.13	≤23.16	PASS
				5760~5650	-46.49	≤-27	PASS
		High	5825	5850~5855	-34.24	≤20.72	PASS
				5855~5875	-39.12	≤11.72	PASS
				5875~5925	-43.78	≤4.11	PASS
				5925~5935	-45.61	≤-27	PASS
11N20SISO	Ant1	Low	5745	5650~5700	-42.46	≤7.77	PASS
				5700~5720	-33.64	≤14.60	PASS
				5720~5725	-28.73	≤22.37	PASS
				5760~5650	-45.66	≤-27	PASS
		High	5825	5850~5855	-36.06	≤22.26	PASS
				5855~5875	-37.57	≤10.21	PASS
				5875~5925	-42.96	≤-26.36	PASS
				5925~5935	-45.26	≤-27	PASS
11N40SISO	Ant1	Low	5755	5650~5700	-38.56	≤8.76	PASS
				5700~5720	-34.59	≤15.31	PASS
				5720~5725	-33.7	≤16.35	PASS
				5780~5650	-45.57	≤-27	PASS
		High	5795	5850~5855	-39.6	≤21.68	PASS
				5855~5875	-38.04	≤11.43	PASS
				5875~5925	-43.69	≤-21.31	PASS
				5925~5935	-45.5	≤-27	PASS
11AC20 SISO	Ant1	Low	5745	5650~5700	-42.99	≤7.68	PASS
				5700~5720	-32.07	≤15.59	PASS
				5720~5725	-31.4	≤16.34	PASS
				5760~5650	-46.28	≤-27	PASS
		High	5825	5850~5855	-38.2	≤19.80	PASS
				5855~5875	-41.16	≤11.01	PASS
				5875~5925	-44.22	≤-24.26	PASS
				5925~5935	-45.31	≤-27	PASS
11AC40 SISO	Ant1	Low	5755	5650~5700	-38.81	≤4.76	PASS
				5700~5720	-33.77	≤15.20	PASS
				5720~5725	-33.73	≤22.51	PASS
				5780~5650	-43.79	≤-27	PASS
		High	5795	5850~5855	-40.32	≤19.42	PASS
				5855~5875	-38.49	≤10.50	PASS
				5875~5925	-41.96	≤-22.53	PASS
				5925~5935	-45.52	≤-27	PASS
11AC80 SISO	Ant1	Low	5775	5650~5700	-36.65	≤3.71	PASS
				5700~5720	-34.17	≤14.91	PASS
				5720~5725	-34.84	≤22.01	PASS
				5800~5650	-42.56	≤-27	PASS

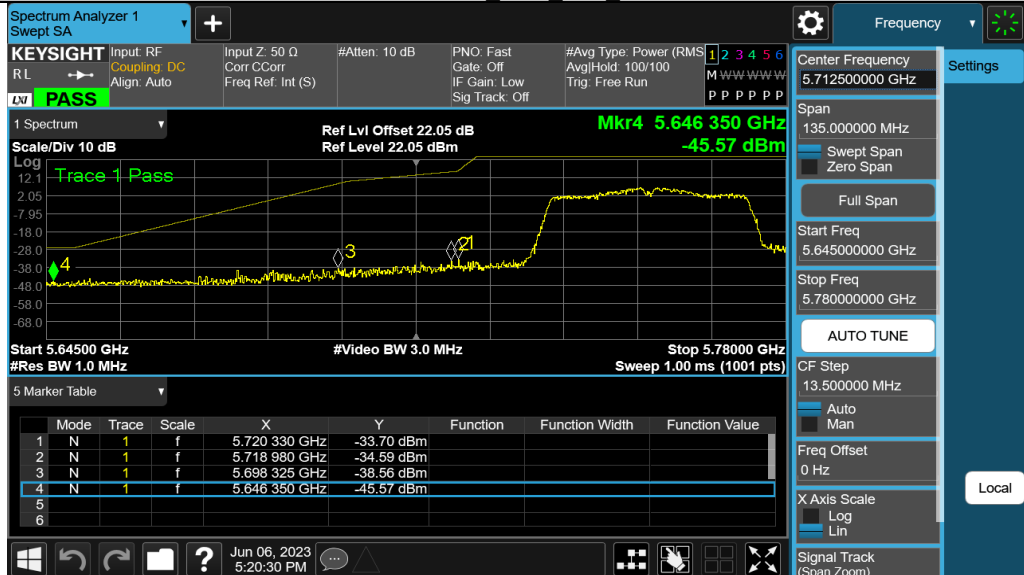
Test Graphs B4



11N20SISO Ant1 High 5825



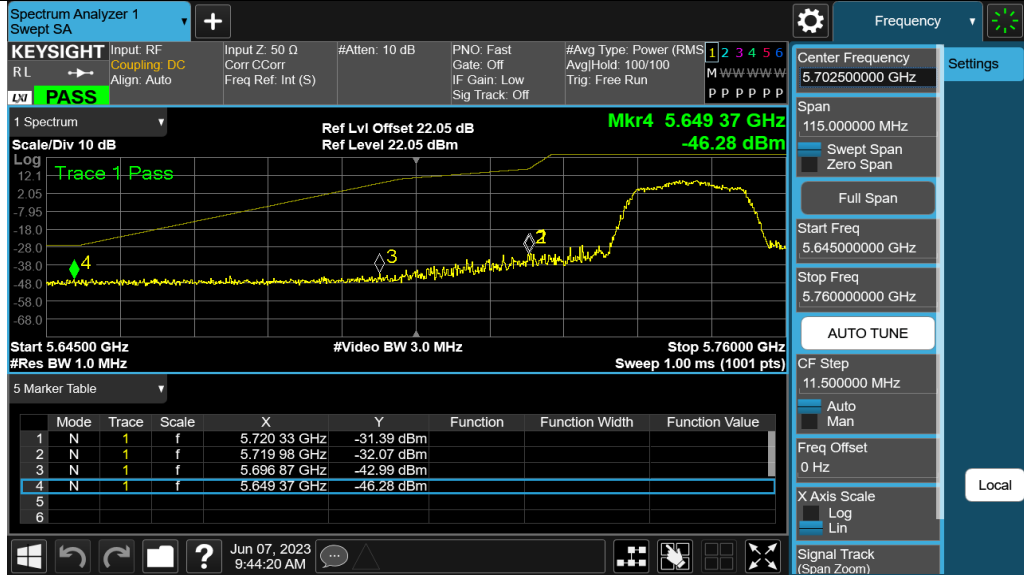
11N40SISO Ant1 Low 5755



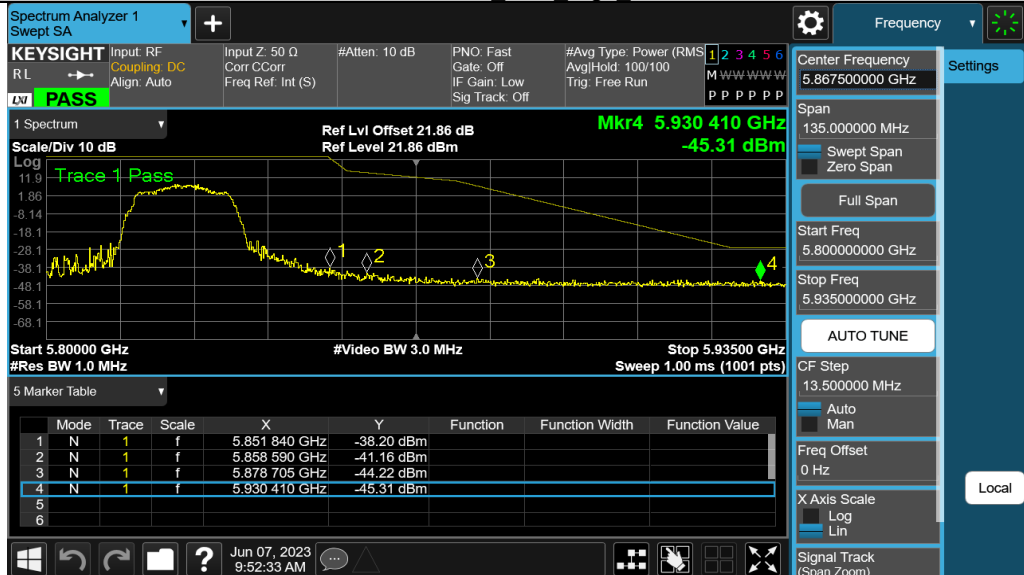
11N40SISO Ant1 High 5795



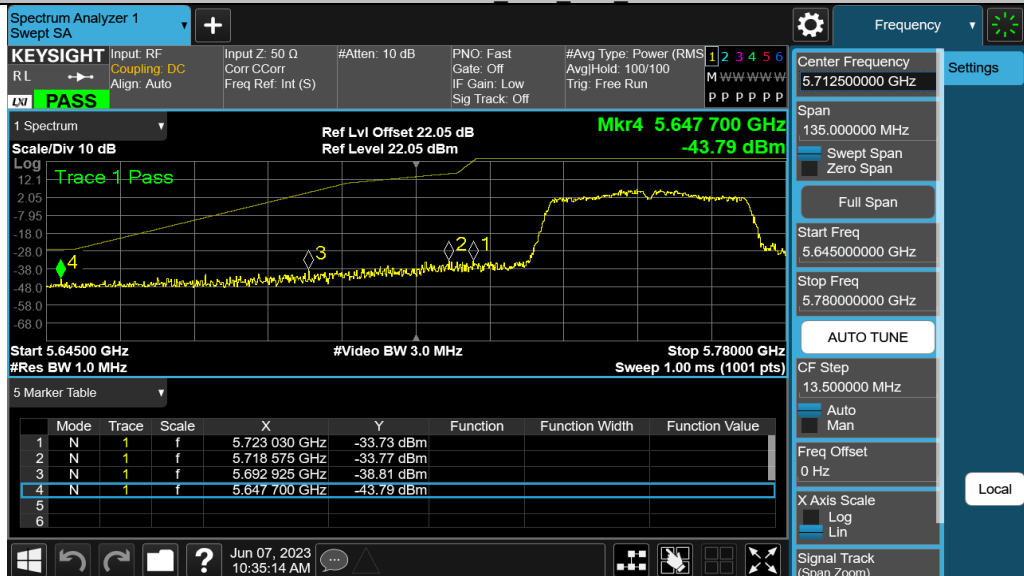
11AC20SISO Ant1 Low 5745

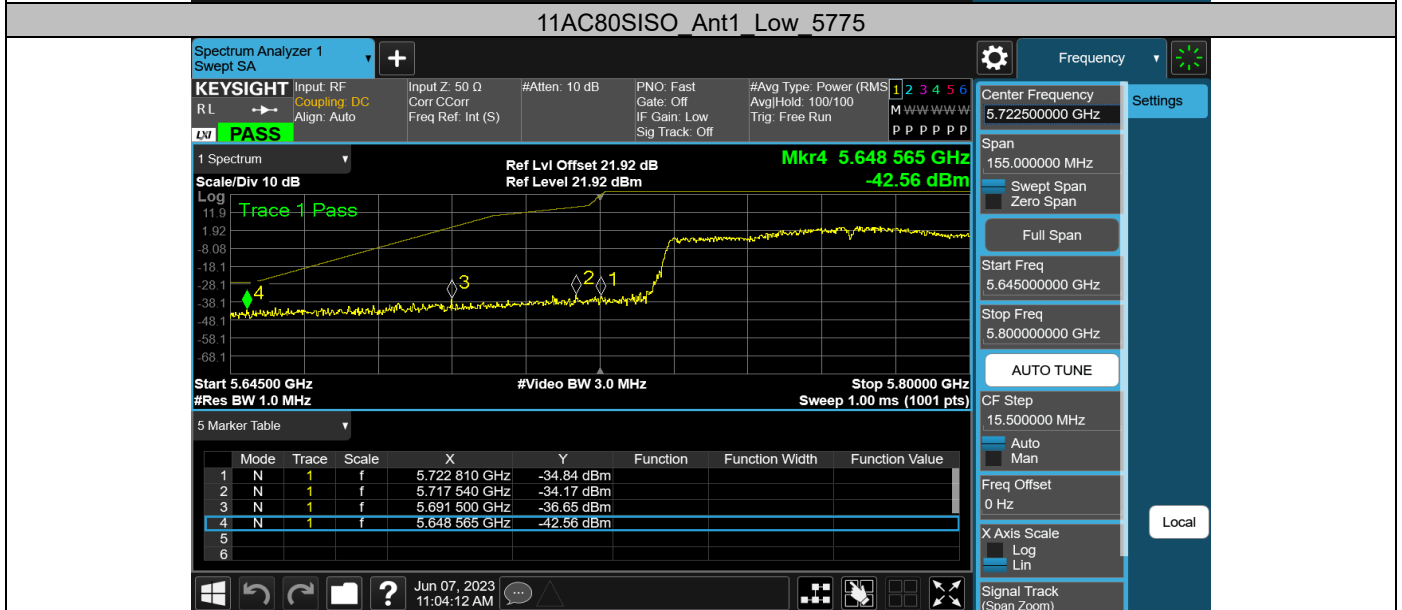
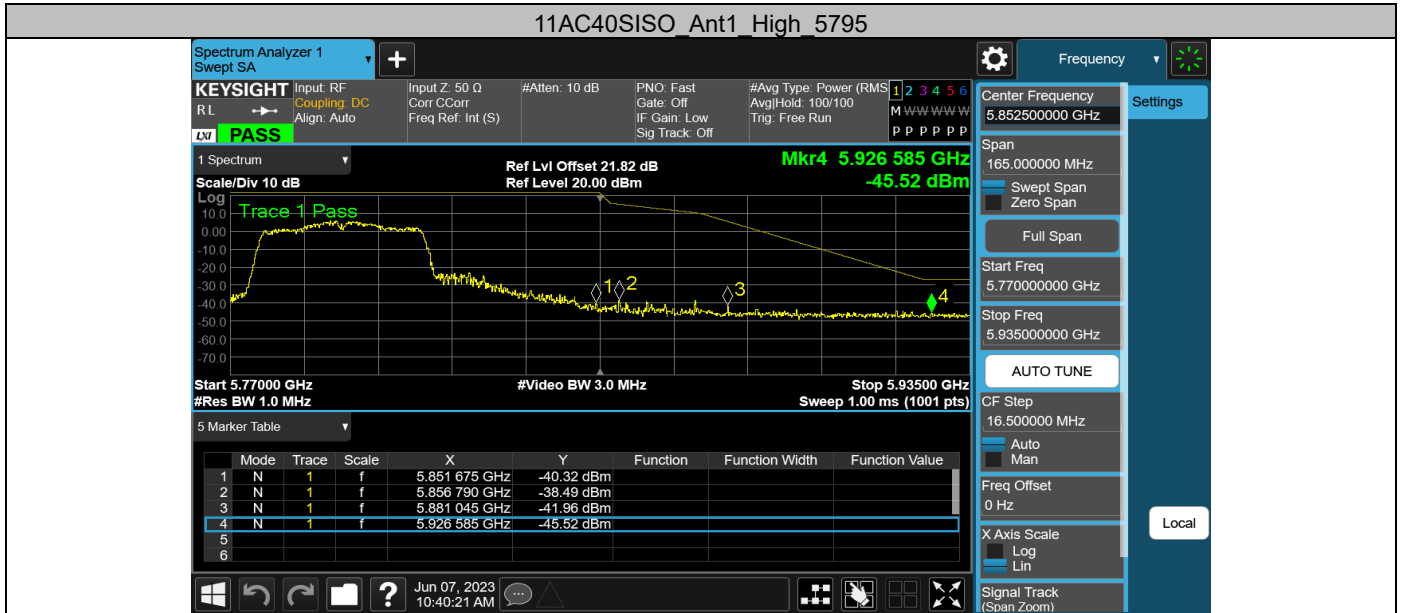


11AC20SISO Ant1 High 5825



11AC40SISO Ant1 Low 5755





Appendix H: Frequency Stability
Test Result

Voltage								
Test Mode	Antenna	Frequency[M Hz]	Voltage [Vdc]	Temperature (°C)	Deviation (Hz)	Deviation (ppm)	Limit (ppm)	Verdict
11A	Ant1	5180	NV	NT	0.00	0.000000	20	PASS
			LV	NT	0.00	0.000000	20	PASS
			HV	NT	0.00	0.000000	20	PASS
		5260	NV	NT	20000.00	3.802281	20	PASS
			LV	NT	0.00	0.000000	20	PASS
			HV	NT	0.00	0.000000	20	PASS
		5500	NV	NT	0.00	0.000000	20	PASS
			LV	NT	0.00	0.000000	20	PASS
			HV	NT	0.00	0.000000	20	PASS
		5745	NV	NT	0.00	0.000000	20	PASS
			LV	NT	0.00	0.000000	20	PASS
			HV	NT	0.00	0.000000	20	PASS

Temperature										
Test Mode	Antenna	Frequency[M Hz]	Voltage [Vdc]	Temperature (°C)	Deviation (Hz)	Deviation (ppm)	Limit (ppm)	Verdict		
11A	Ant1	5180	NV	-30	20000.00	3.861004	20	PASS		
			NV	-20	0.00	0.000000	20	PASS		
			NV	-10	0.00	0.000000	20	PASS		
			NV	0	0.00	0.000000	20	PASS		
			NV	10	0.00	0.000000	20	PASS		
			NV	20	0.00	0.000000	20	PASS		
			NV	30	0.00	0.000000	20	PASS		
			NV	40	0.00	0.000000	20	PASS		
		5260	NV	-30	0.00	0.000000	20	PASS		
			NV	-20	0.00	0.000000	20	PASS		
			NV	-10	0.00	0.000000	20	PASS		
			NV	0	0.00	0.000000	20	PASS		
			NV	10	0.00	0.000000	20	PASS		
			NV	20	0.00	0.000000	20	PASS		
			NV	30	0.00	0.000000	20	PASS		
			NV	40	0.00	0.000000	20	PASS		
		5500	NV	-30	0.00	0.000000	20	PASS		
			NV	-20	0.00	0.000000	20	PASS		
			NV	-10	0.00	0.000000	20	PASS		
			NV	0	0.00	0.000000	20	PASS		
			NV	10	0.00	0.000000	20	PASS		
			NV	20	0.00	0.000000	20	PASS		
			NV	30	0.00	0.000000	20	PASS		
			NV	40	0.00	0.000000	20	PASS		
		5745	NV	-30	0.00	0.000000	20	PASS		
			NV	-20	0.00	0.000000	20	PASS		
			NV	-10	0.00	0.000000	20	PASS		
			NV	0	0.00	0.000000	20	PASS		
			NV	10	0.00	0.000000	20	PASS		
			NV	20	0.00	0.000000	20	PASS		
			NV	30	0.00	0.000000	20	PASS		
			NV	40	0.00	0.000000	20	PASS		
							20000.00	3.481288	20	PASS

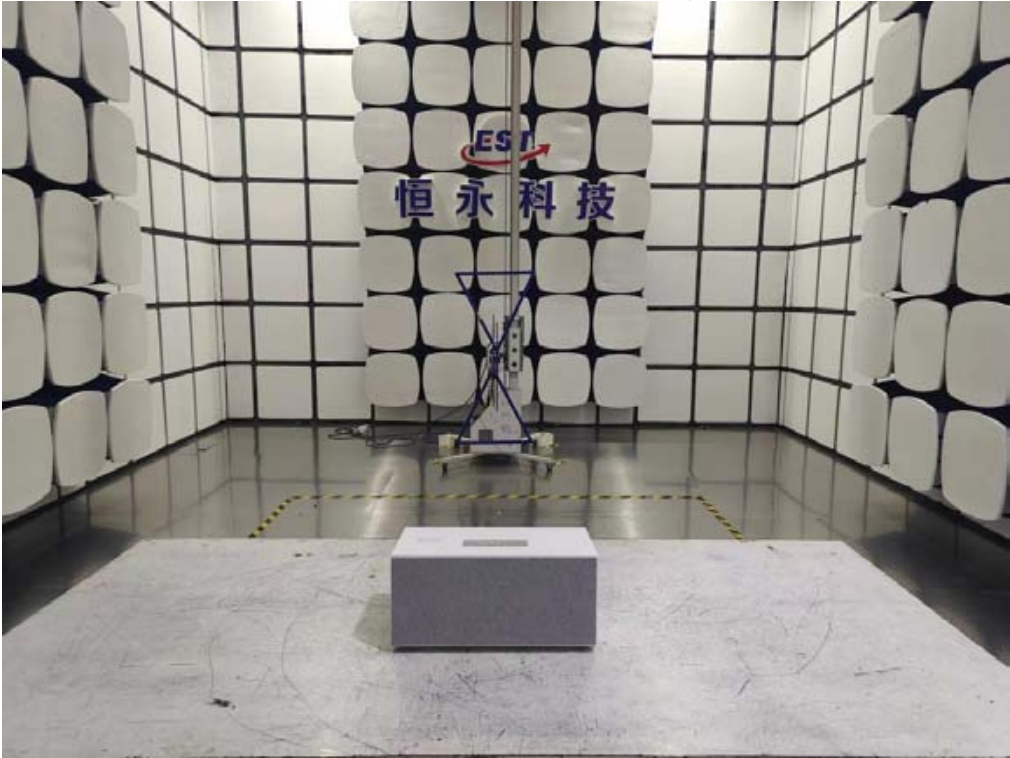


11. TEST SETUP PHOTO

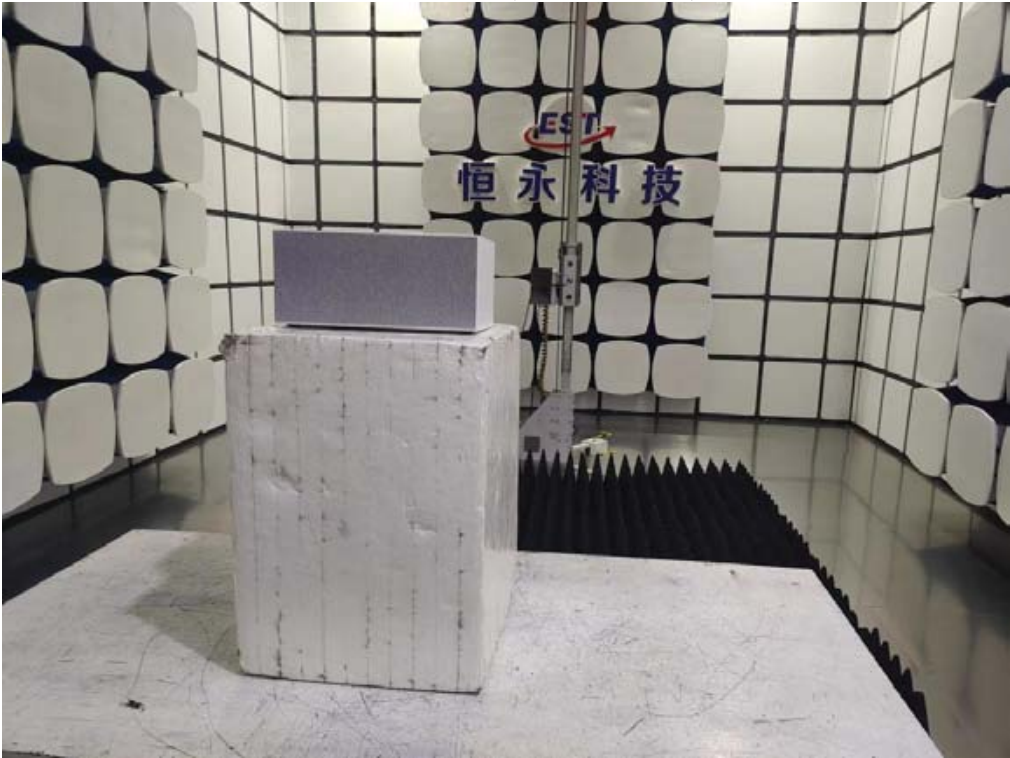
Conducted Test



Radiated Test (Below 1GHz)



Radiated Test (Above 1GHz)



12. EUT PHOTO

External Photos
M/N: C20



External Photos
M/N: C20



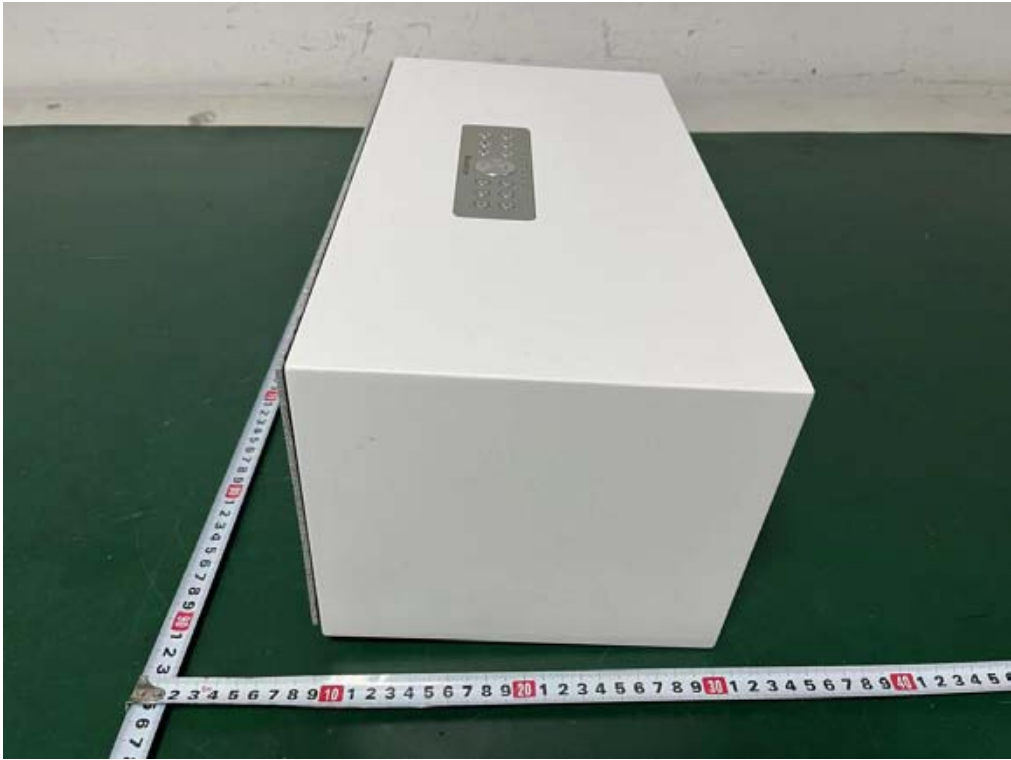
External Photos
M/N: C20



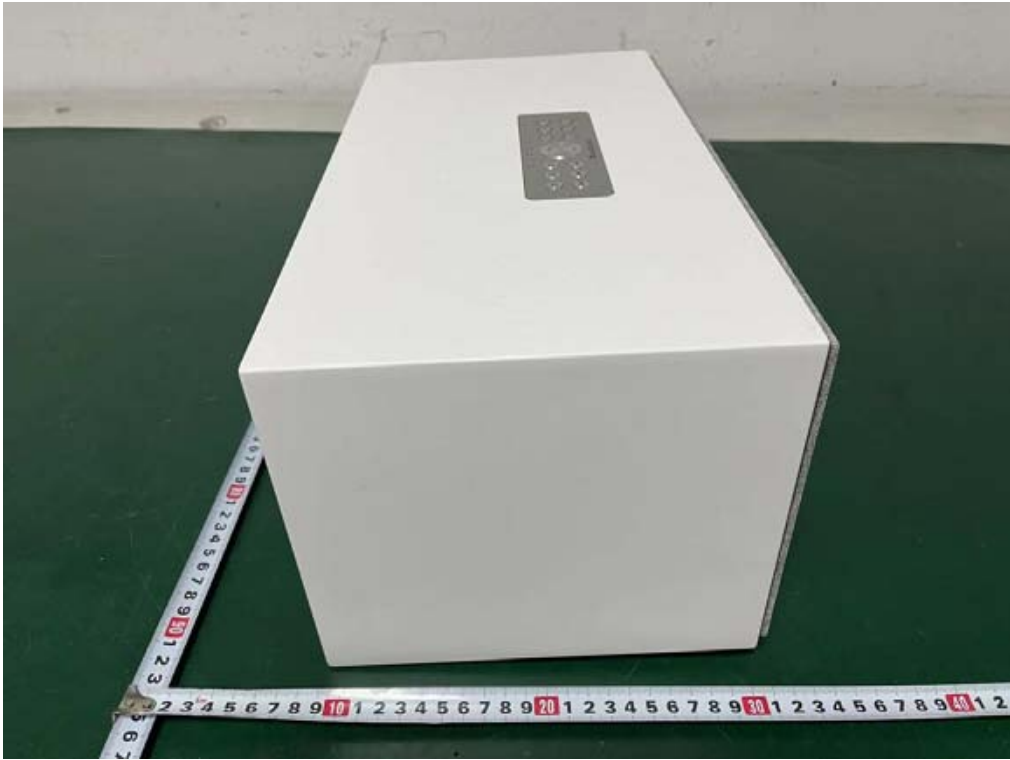
External Photos
M/N: C20



External Photos
M/N: C20



External Photos
M/N: C20



External Photos
M/N: C20



Internal Photos
M/N: C20



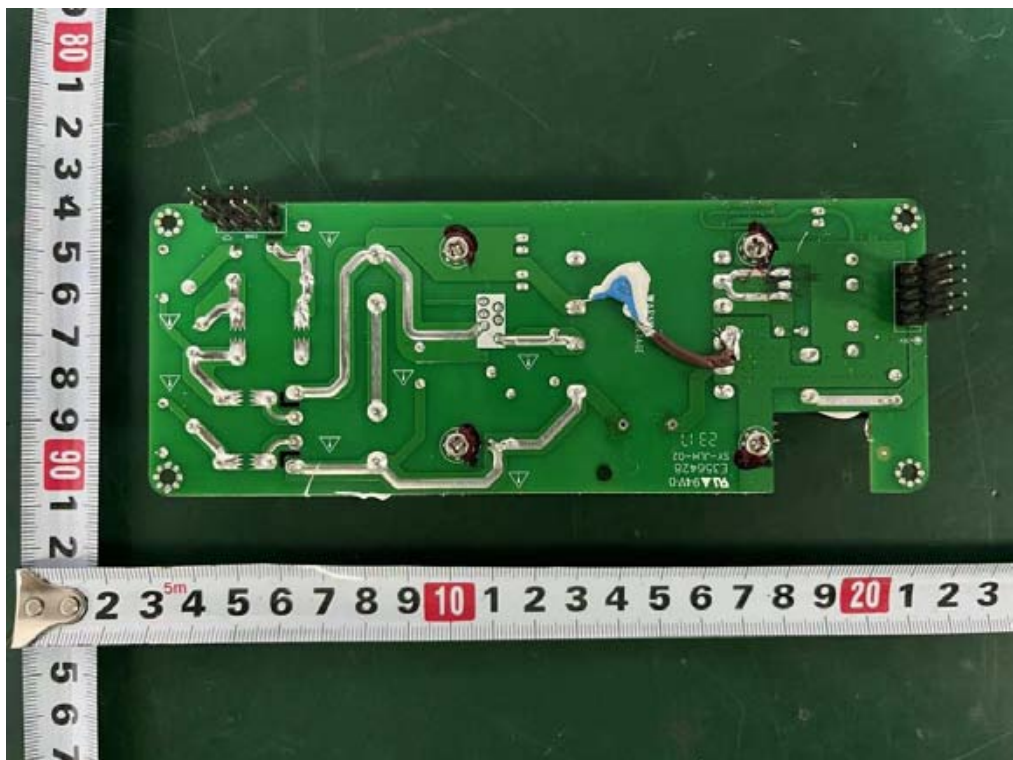
Internal Photos
M/N: C20



Internal Photos
M/N: C20



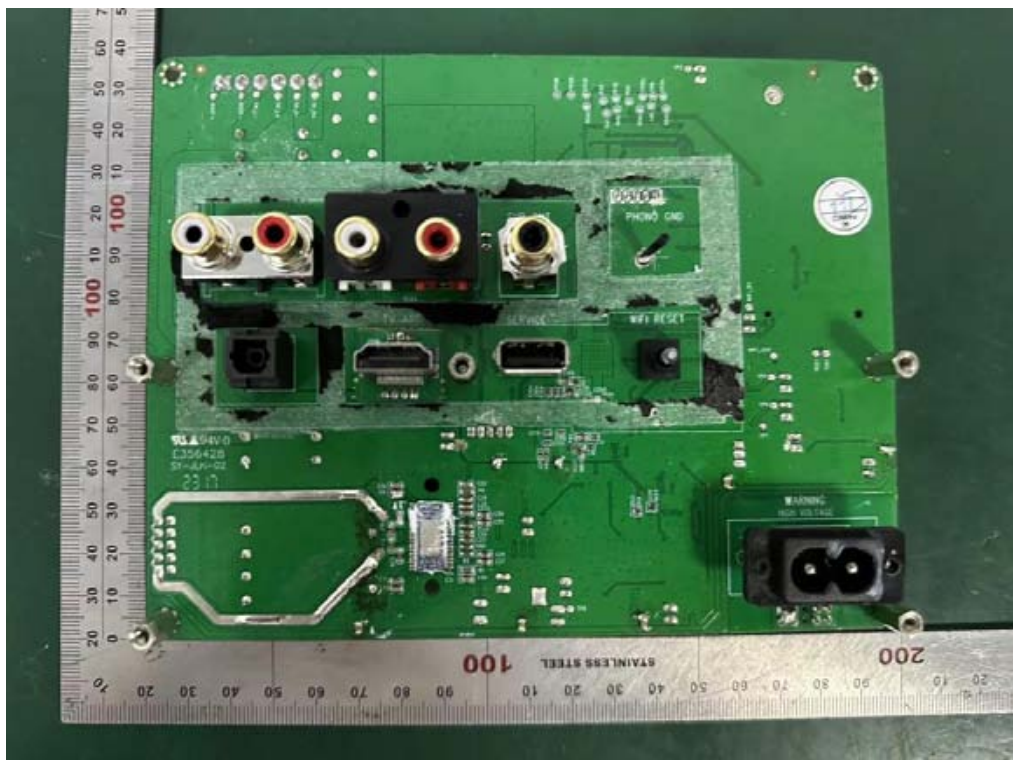
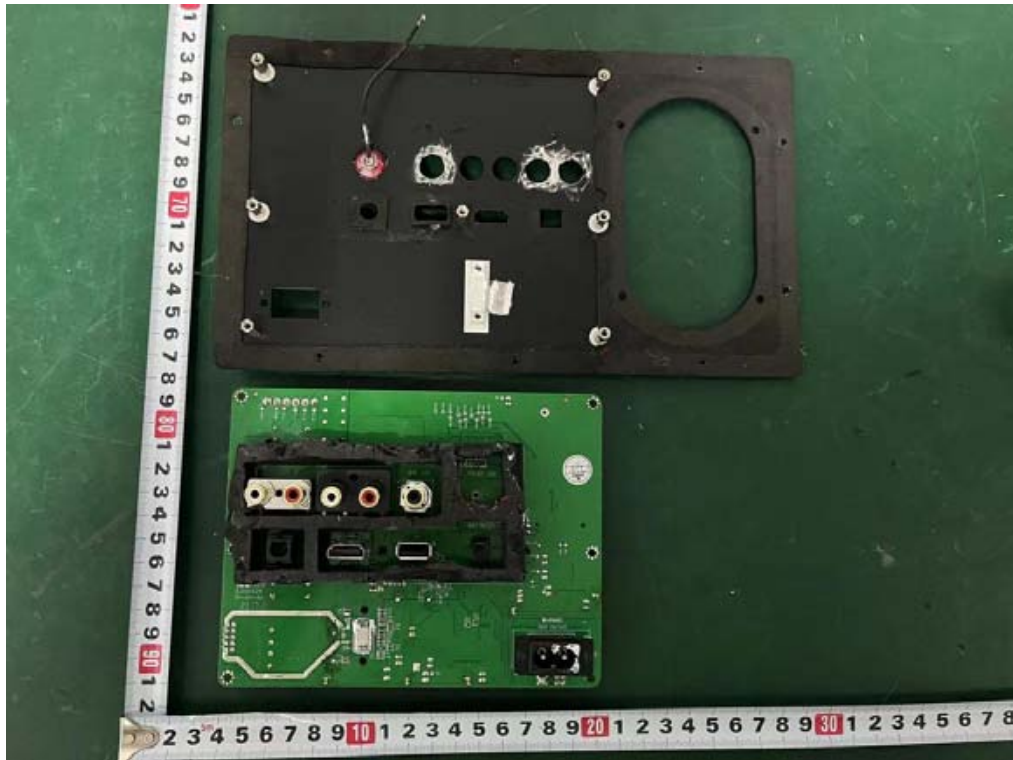
Internal Photos
M/N: C20



Internal Photos
M/N: C20

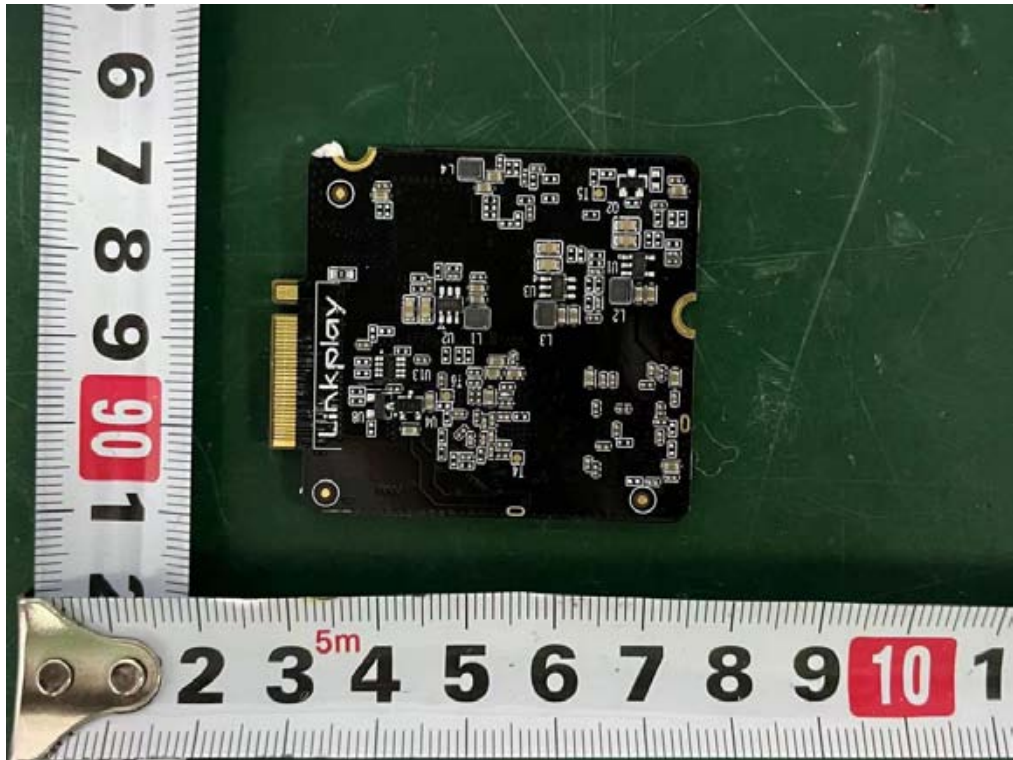


Internal Photos
M/N: C20



Internal Photos

M/N: C20

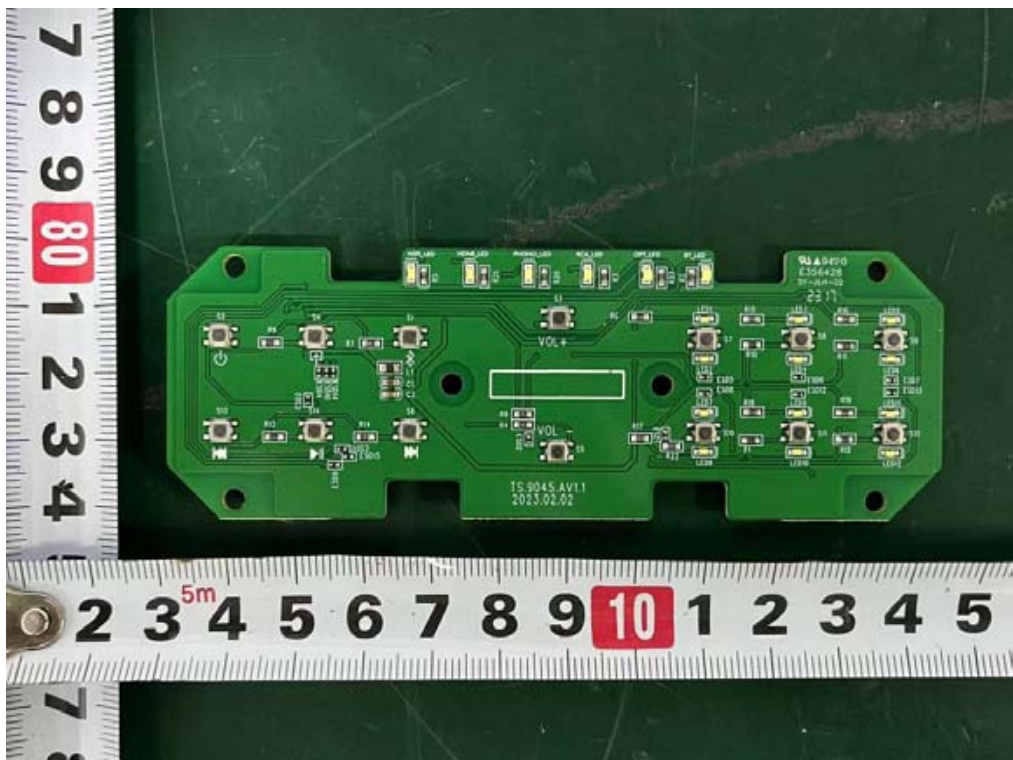
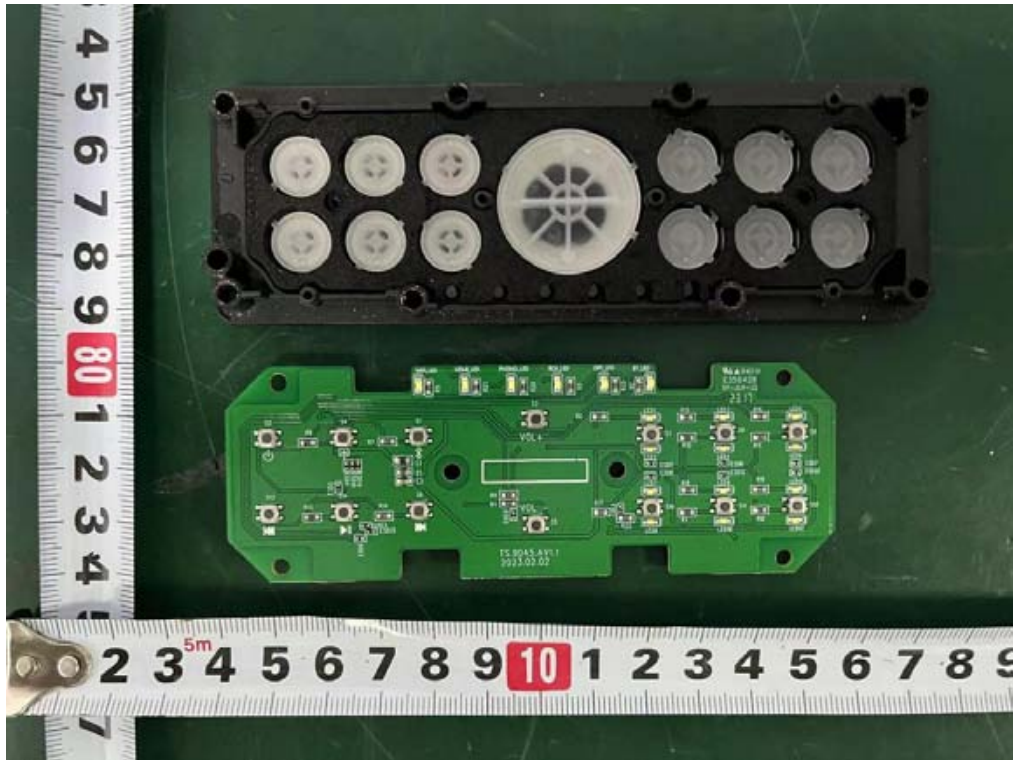


Internal Photos
M/N: C20

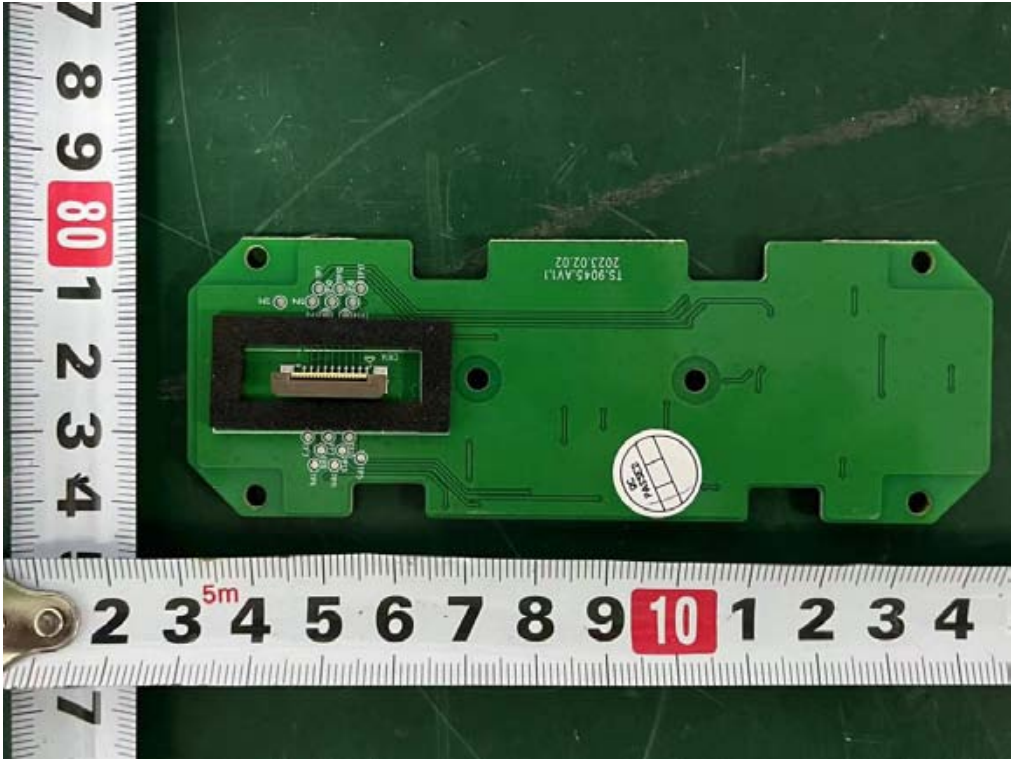


Internal Photos

M/N: C20



Internal Photos
M/N: C20



End of Test Report