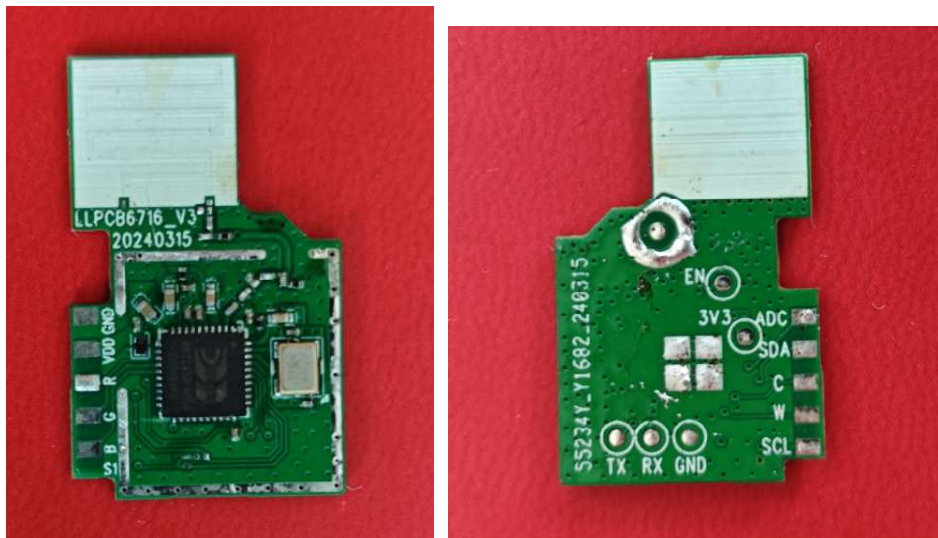


SLM-B01 User Manual

1. Introduction

SLM-B01 is a cost-effective embedded 2.4 GHz WiFi(IEEE 802.11b/g/n/ax 1x1 compliant) and Bluetooth® 5.2 module launched by Sengled, Custom Nodes BK7235 technology, BK7235 integrates the antenna switch, RF balun, power amplification amplifier, low noise amplifier, filter and power management. The module compact design requires very little external circuit and reduces PCB size to minimum.

2. Module samples



3. General information

1. Support 802.11b /g/n, The frequency range is 2412 MHz ~ 2462 MHz;
2. support (Bluetooth LE): Bluetooth 5.2、Bluetooth mesh, The frequency range is 2402 MHz ~ 2480 MHz;
3. RISC-V 32-bit Microprocessor processing management;
4. SPI Flash: 4 MB(internal integrated flash);
5. Single power supply 2.7 to 3.6V, Average current: 85 mA;
6. Net network protocol (2) the IPv4 / IPv6, TCP/UDP; HTTP/HTTPS/SSL/MQTT/mDNS/CoAP;
7. Straight plug installation;

8. Compact size 17*27mm;
9. Integrated on-board antenna;
10. Internal co-existence mechanism between Wi-Fi and Bluetooth to share the same antenna.

FCC Certification Requirements.

According to the definition of mobile and fixed device is described in Part 2.1091(b), this device is a mobile device.

And the following conditions must be met:

1. This Modular Approval is limited to OEM installation for mobile and fixed applications only. The antenna installation and operating configurations of this transmitter, including any applicable source-based time- averaging duty factor, antenna gain and cable loss must satisfy MPE categorical Exclusion Requirements of 2.1091.

2. The EUT is a mobile device; maintain at least a 20 cm separation between the EUT and the user's body and must not transmit simultaneously with any other antenna or transmitter.

3. A label with the following statements must be attached to the host end product: This device contains FCC ID: 2AGN8-SLMB01.

4. To comply with FCC regulations limiting both maximum RF output power and human exposure to RF radiation, maximum antenna gain (including cable loss) must not exceed:

Bluetooth/Bluetooth LE/Wi-Fi 2.4G: ≤ 2 dBi

5. This module must not transmit simultaneously with any other antenna or transmitter

6. The host end product must include a user manual that clearly defines operating requirements and conditions that must be observed to ensure compliance with current FCC RF exposure guidelines.

For portable devices, in addition to the conditions 3 through 6 described above, a separate approval is required to satisfy the SAR requirements of FCC Part 2.1093

If the device is used for other equipment that separate approval is required for all other operating configurations, including portable configurations with respect to 2.1093 and different antenna configurations.

For this device, OEM integrators must be provided with labeling instructions of finished products. Please refer to KDB784748 DO1 v07, section 8. Page 6/7 last two paragraphs:

A certified modular has the option to use a permanently affixed label, or an electronic label. For a permanently affixed label, the module must be labeled with an FCC ID - Section 2.926 (see 2.2 Certification (labeling requirements) above). The OEM manual must provide clear instructions explaining to the OEM the labeling requirements, options and OEM user manual instructions that are required (see next paragraph).

For a host using a certified modular with a standard fixed label, if (1) the module's FCC ID is not visible when installed in the host, or (2) if the host is marketed so that end users do not have straightforward commonly used methods for access to remove the module so that the FCC ID of the module is visible; then an additional permanent label referring to the enclosed module:

“Contains Transmitter Module FCC ID: 2AGN8-SLMB01.” or “Contains FCC ID: 2AGN8-SLMB01.” must be used. The host OEM user manual must also contain clear instructions on how end users can find and/or access the module and the FCC ID.

The final host / module combination may also need to be evaluated against the FCC Part 15B criteria for unintentional radiators in order to be properly authorized for operation as a Part 15 digital device.

The user's manual or instruction manual for an intentional or unintentional radiator shall caution the user that changes or modifications not expressly approved by the party responsible for compliance could void the user's authority to operate the equipment. In cases where the manual

is provided only in a form other than paper, such as on a computer disk or over the Internet, the information required by this section may be included in the manual in that alternative form, provided the user can reasonably be expected to have the capability to access information in that form.

This device complies with part 15 of the FCC Rules. Operation is subject to the following two conditions: (1) This device may not cause harmful interference, and (2) this device must accept any interference received, including interference that may cause undesired operation.

Changes or modifications not expressly approved by the manufacturer could void the user's authority to operate the equipment.

IC Certification Requirements.

This device contains licence-exempt transmitter(s)/receiver(s) that comply with Innovation, Science and Economic Development Canada's licence-exempt RSS(s). Operation is subject to the following two conditions:

1. This device may not cause interference.
2. This device must accept any interference, including interference that may cause undesired operation of the device.

To comply with IC regulations limiting both maximum RF output power and human exposure to RF radiation, maximum antenna gain (including cable loss) must not exceed:

Bluetooth/Bluetooth LE/Wi-Fi 2.4G: ≤ 3.46 dBi

L'appareil contient un émetteur / récepteur exempté de licence conforme au CNR exempté de licence d'innovation, sciences et développement économique Canada. Les opérations sont soumises aux deux conditions suivantes:

1. Cet appareil peut ne pas causer d'interférence.

L'appareil doit accepter toute interférence, y compris celles qui peuvent entraîner un fonctionnement indésirable de l'appareil.

This equipment complies with ISED radiation exposure limits set forth for an uncontrolled environment. To comply with RSS-102 RF Exposure compliance requirements, this grant is applicable to only Mobile Configurations. The antennas used for the transmitter must be installed to provide a separation distance of at least 20cm from all persons and must not be co-located or operating in conjunction with any other antenna or transmitter.

The host product shall be properly labelled to identify the modules within the host product.

The Innovation, Science and Economic Development Canada certification label of a module shall be clearly visible at all times when installed in the host product; otherwise, the host product must be labeled to display the Innovation, Science and Economic Development Canada certification number for the module, preceded by the word "Contains" or similar wording expressing the same meaning, as follows:

“Contains IC: 20888-SLMB01” or “where: 20888-SLMB01 is the module’ s certification number” .

