

## 1. Antenna Description:

Antenna type	External antenna
Model	Z2600
Frequency range	5180-5240MHz
Manufacturer	Shenzhen Zidoo Technology Co., Ltd
ANT Peak Gain	0.20 dBi

## 2. Antenna Photo:

Length :39.91mm  
Width:8.09mm



### 3. Test Equipment & Conditions

#### 3.1 Test instrument

VSWR is tested using Agilent E5071B connected to a hand mechanism, and the status is free space.

#### 3.2 Test environment and methods

Dark room specifications: ETS-743

TD-SCDMA test equipment: StarPoint SP6010/Agilent 8960

LTE-TDD/FDD-SCDMA test equipment: StarPoint SP8011/CMW500

WCDMA/GSM/CDMA test equipment: Agilent 8960

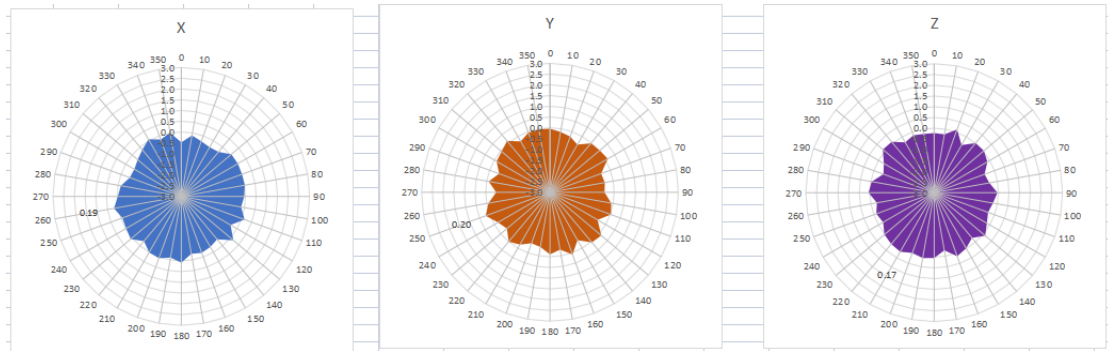
Passive efficiency testing equipment: Agilent Technologies E5071B



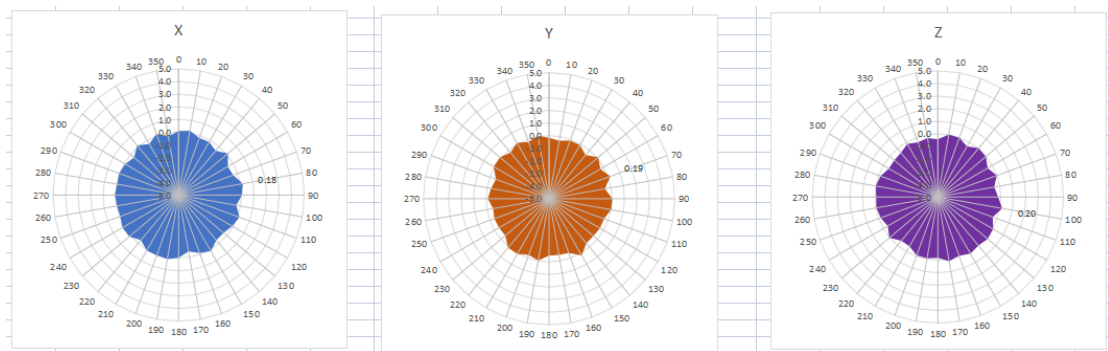
### 4 . Antenna Radiation Pattern



# 5180MHz



# 5200MHz



# 5240MHz

