

**Band-edge Measurements for RF Conducted Emissions at antenna 1:**

**802.11b**

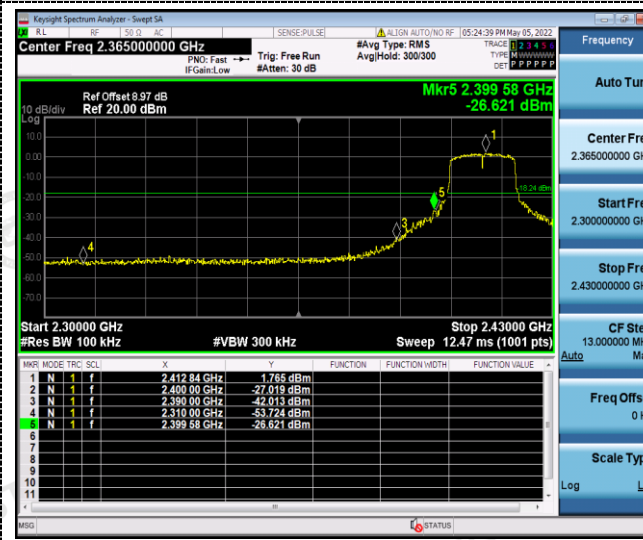


Left bandedge

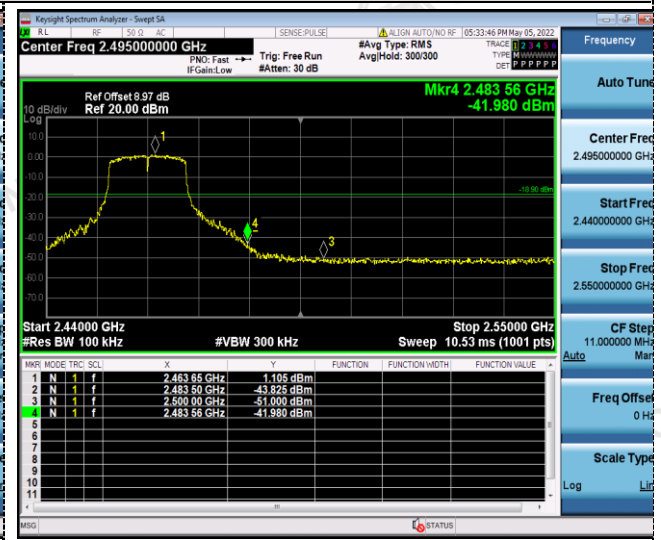


Right bandedge

**802.11g**

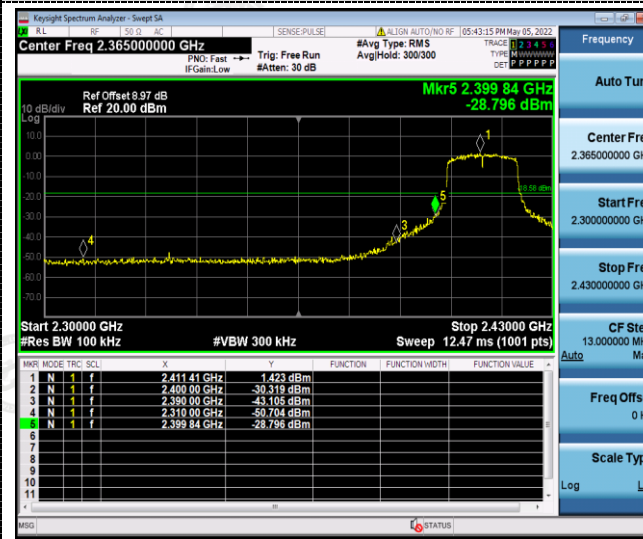


Left bandedge

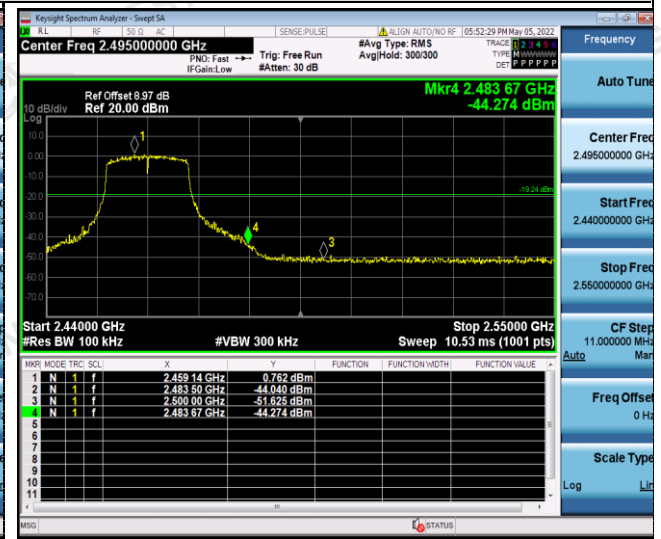


Right bandedge

**802.11n(HT20)**



Left bandedge



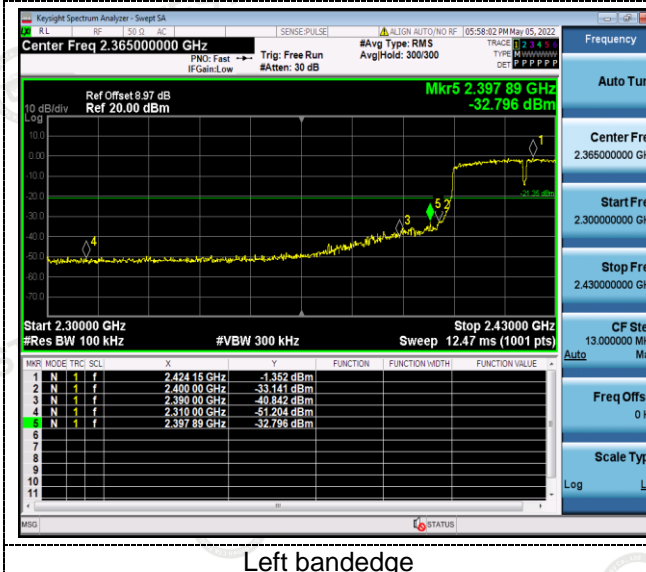
Right bandedge

Shenzhen CTA Testing Technology Co., Ltd.

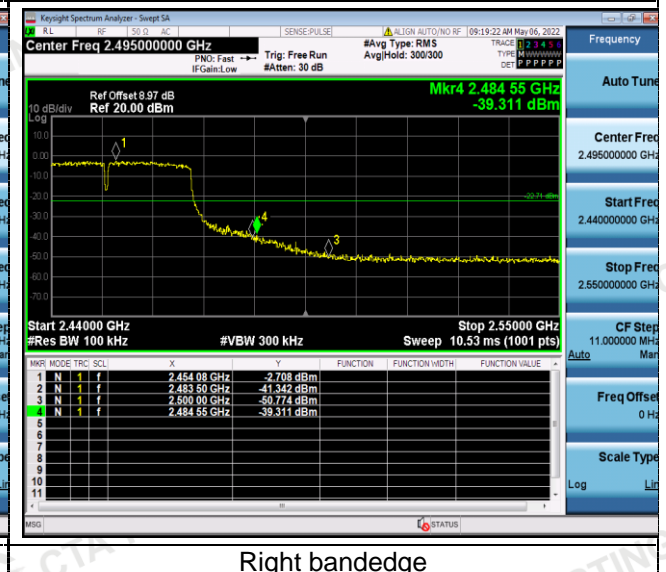
Room 106, Building 1, Yibaolai Industrial Park, Qiaotou Community, Fuhai Street, Bao'an District, Shenzhen, China

Tel:+86-755 2322 5875 E-mail:cta@cta-test.cn Web:http://www.cta-test.cn

802.11n(HT40)



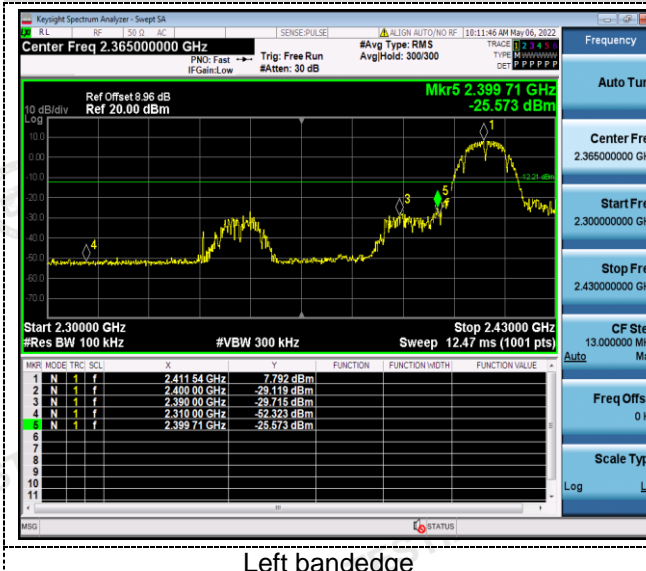
Left bandedge



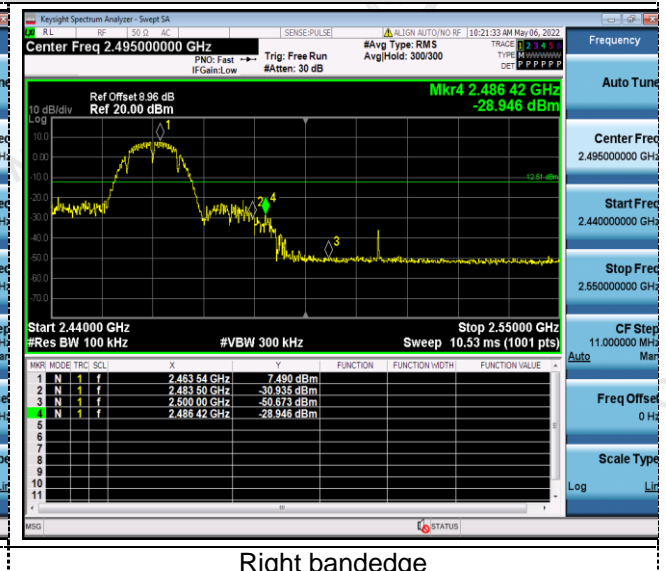
Right bandedge

Band-edge Measurements for RF Conducted Emissions at antenna 2:

802.11b



Left bandedge

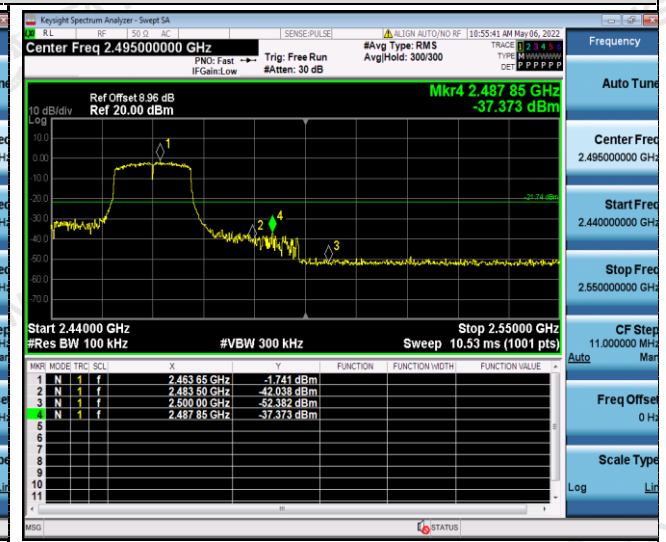


Right bandedge

802.11g



Left bandedge



Right bandedge

Shenzhen CTA Testing Technology Co., Ltd.

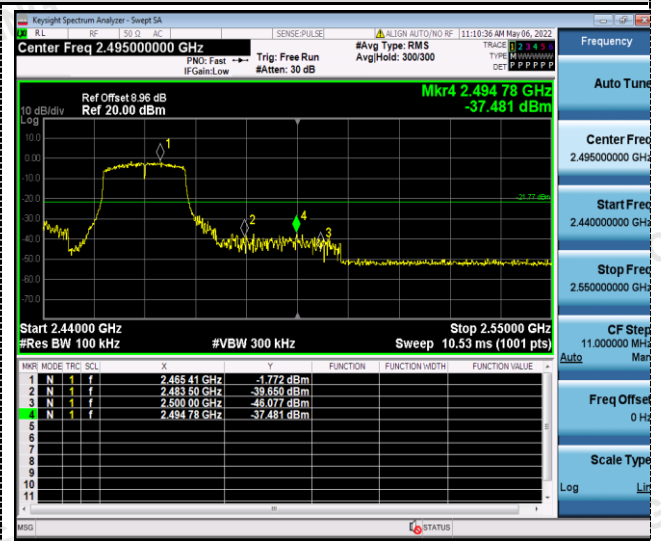
Room 106, Building 1, Yibaolai Industrial Park, Qiaotou Community, Fuhai Street, Bao'an District, Shenzhen, China

Tel:+86-755 2322 5875 E-mail:cta@cta-test.cn Web:http://www.cta-test.cn

Left bandedge

Right bandedge

802.11n(HT20)



Left bandedge

Right bandedge

802.11n(HT40)



Left bandedge

Right bandedge

## 4.7 Antenna Requirement

### Standard Applicable

**For intentional device, according to FCC 47 CFR Section 15.203:**

An intentional radiator shall be designed to ensure that no antenna other than that furnished by the responsible party shall be used with the device. The use of a permanently attached antenna or of an antenna that uses a unique coupling to the intentional radiator, the manufacturer may design the unit so that a broken antenna can be replaced by the user, but the use of a standard antenna jack or electrical connector is prohibited

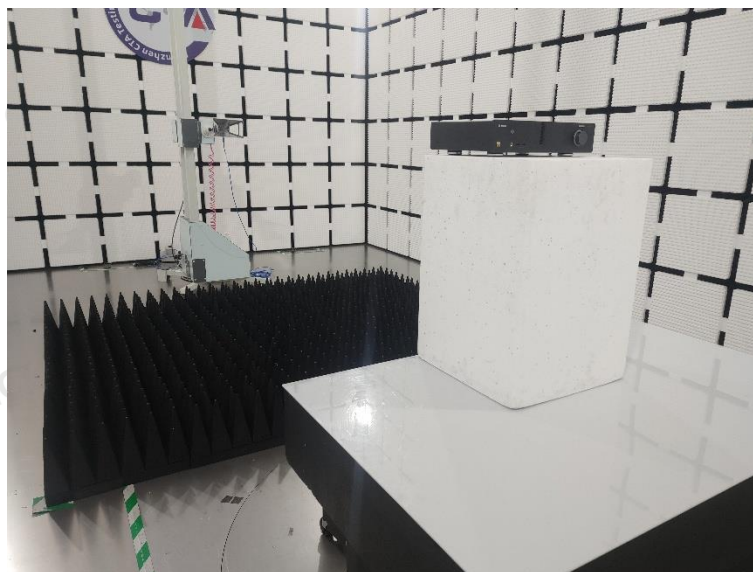
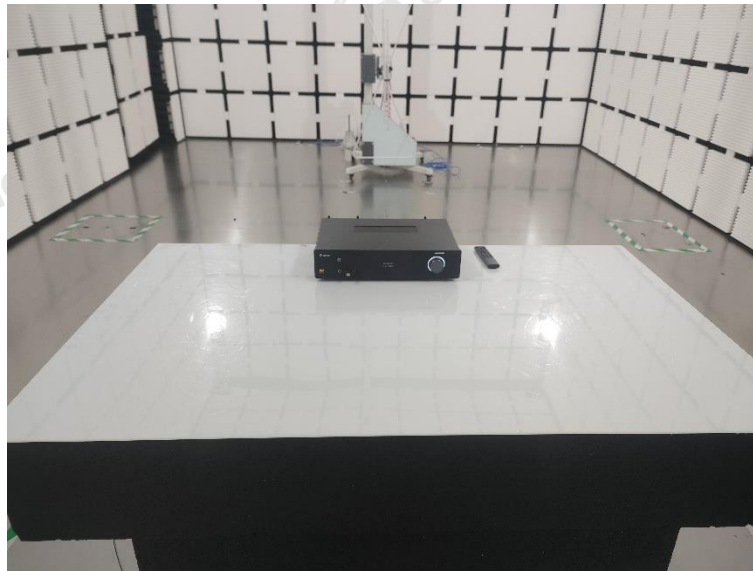
**FCC CFR Title 47 Part 15 Subpart C Section 15.247(c) (1) (I):**

(i) Systems operating in the 2400-2483.5 MHz band that is used exclusively for fixed. Point-to-point operations may employ transmitting antennas with directional gain greater than 6dBi provided the maximum conducted output power of the intentional radiator is reduced by 1 dB for every 3 dB that the directional gain of the antenna exceeds 6dBi.

### Test Result:

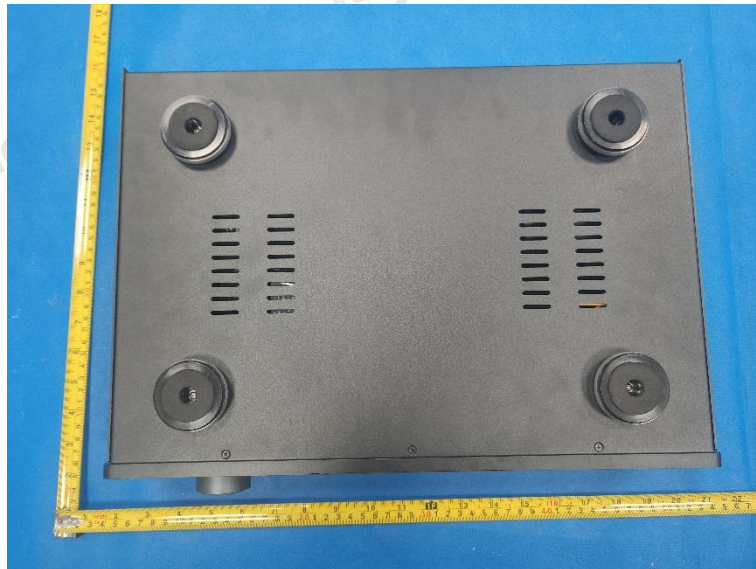
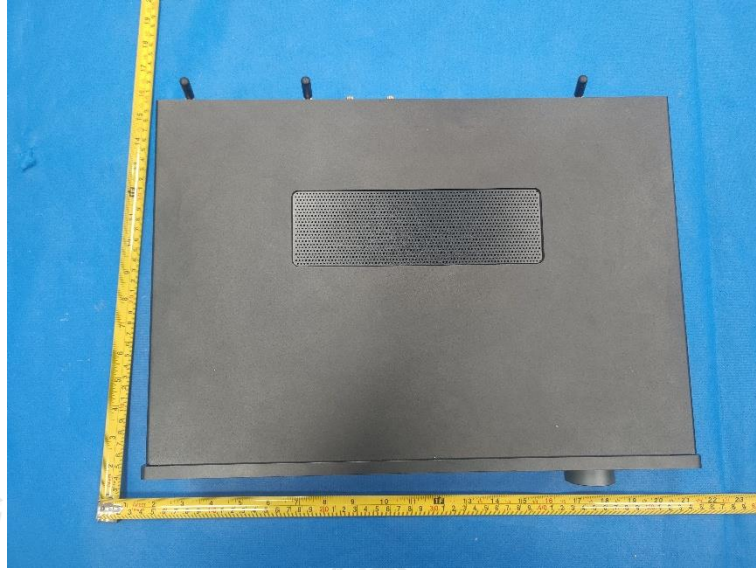
The maximum gain of antenna was 3dBi for 2.4GHz WIFI.

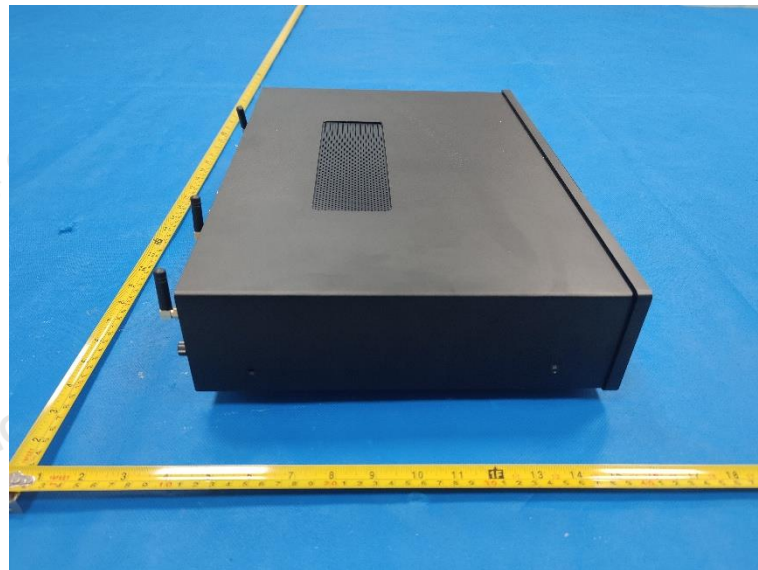
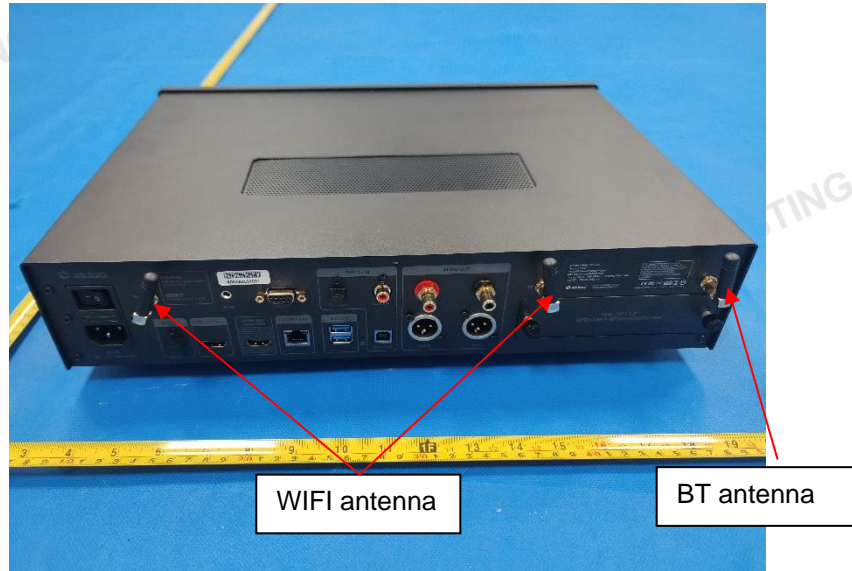
## 5 Test Setup Photos of the EUT



## 6 Photos of the EUT

External photos

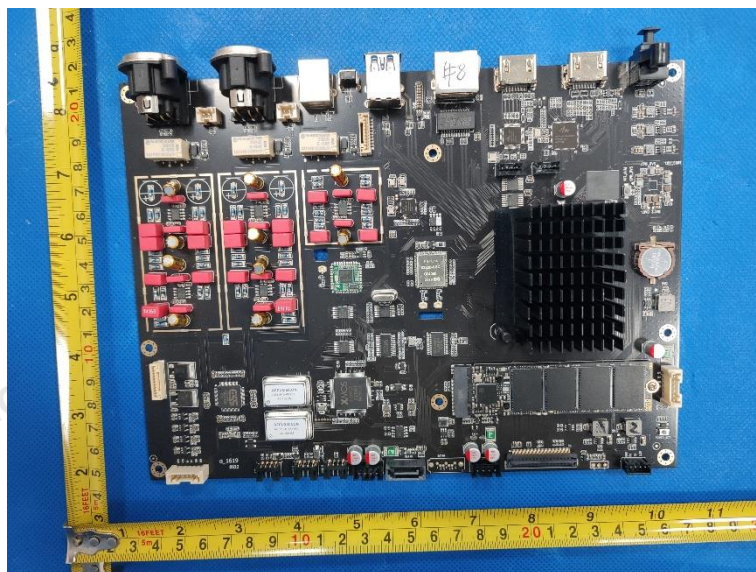
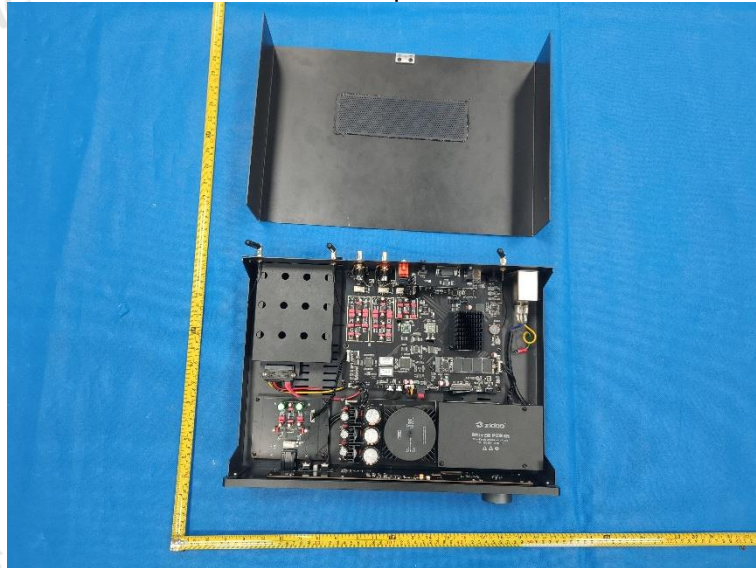


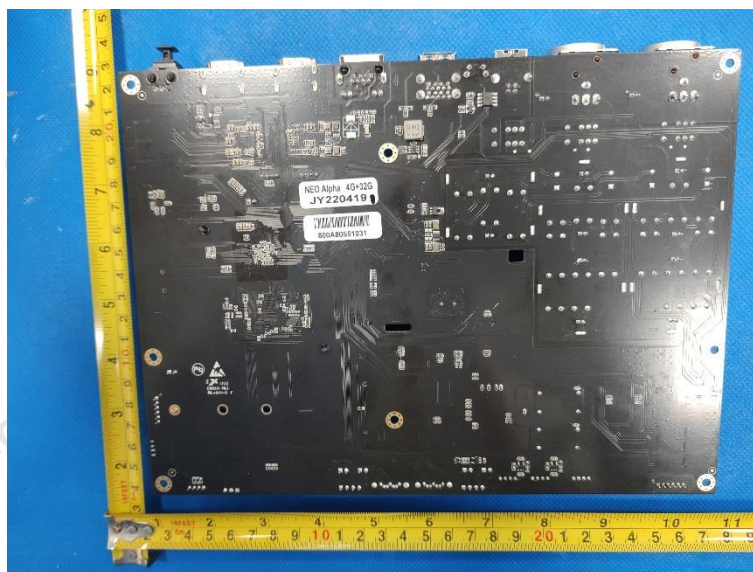
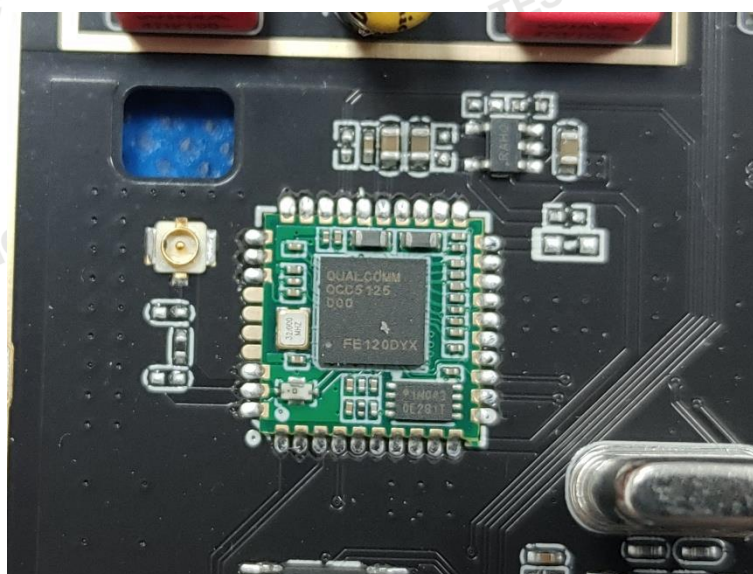
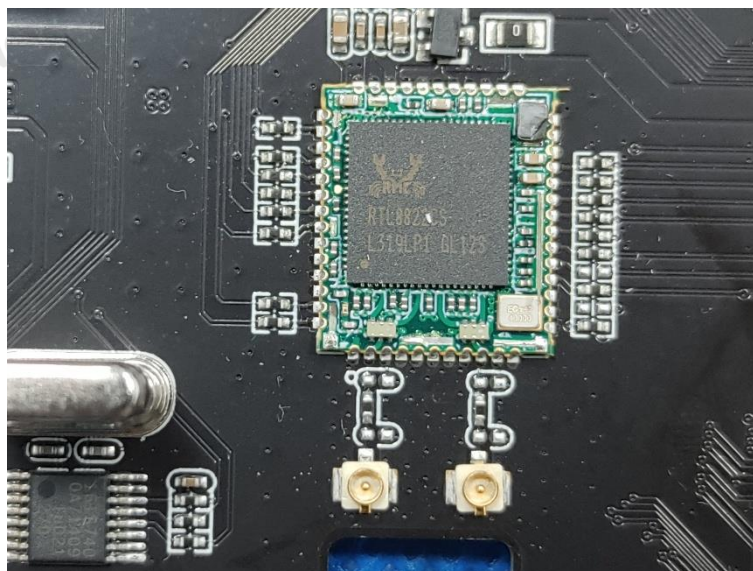


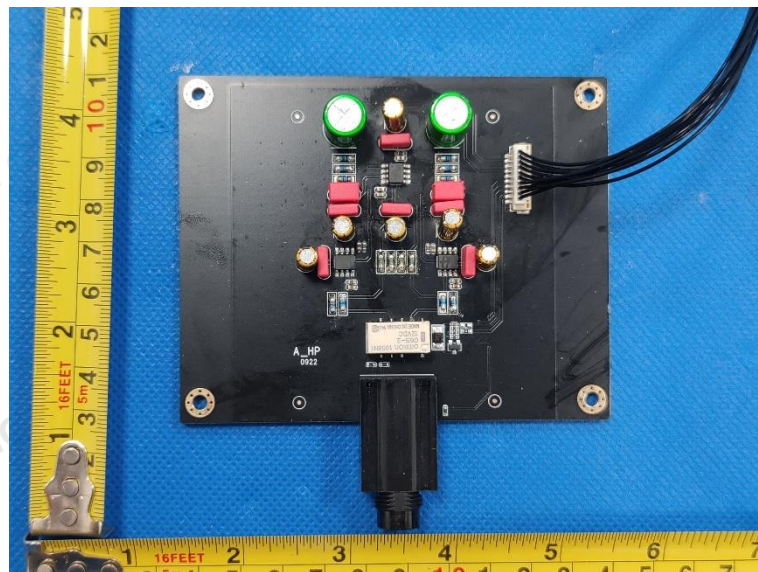
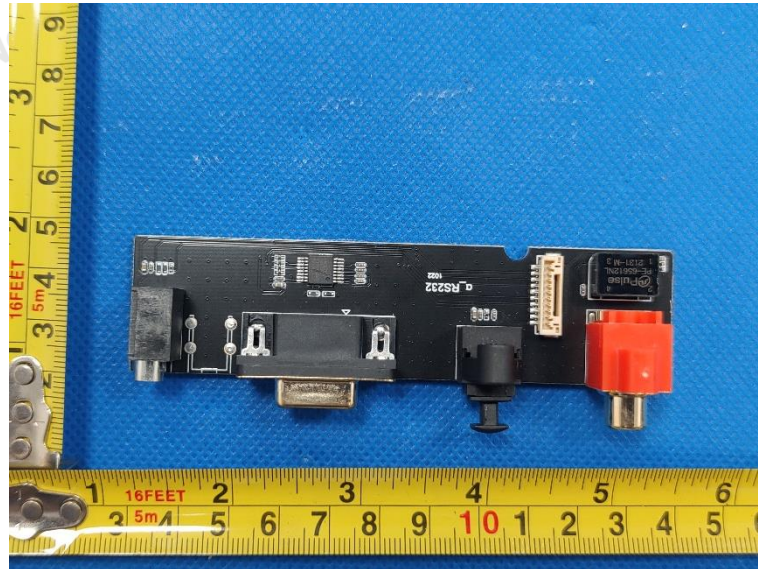


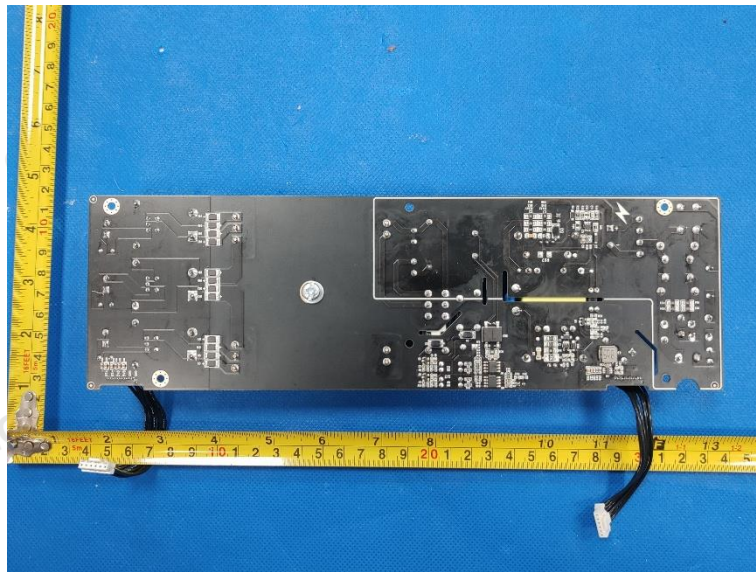
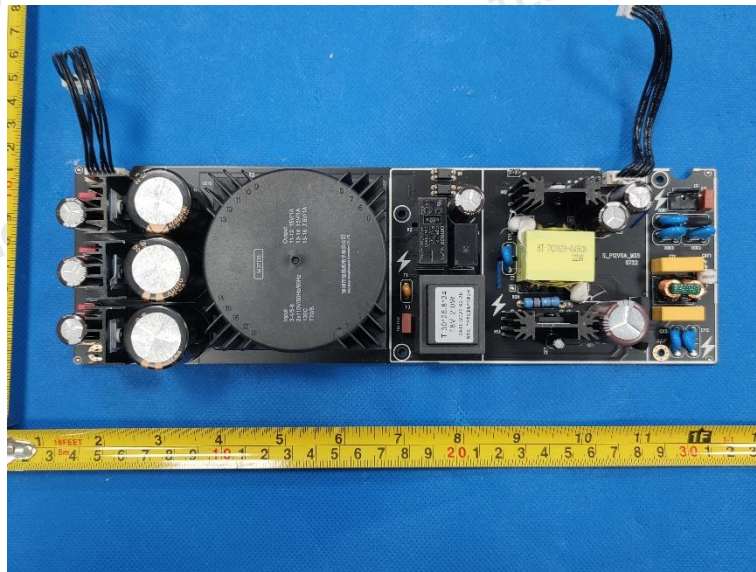
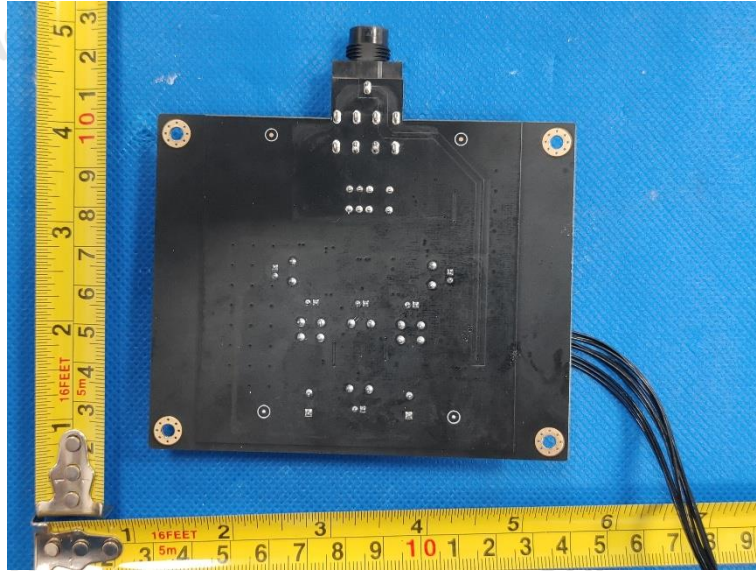


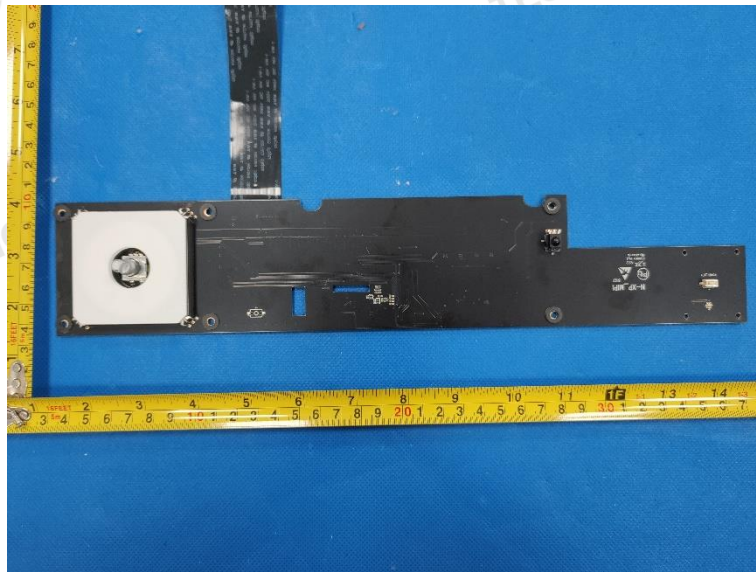
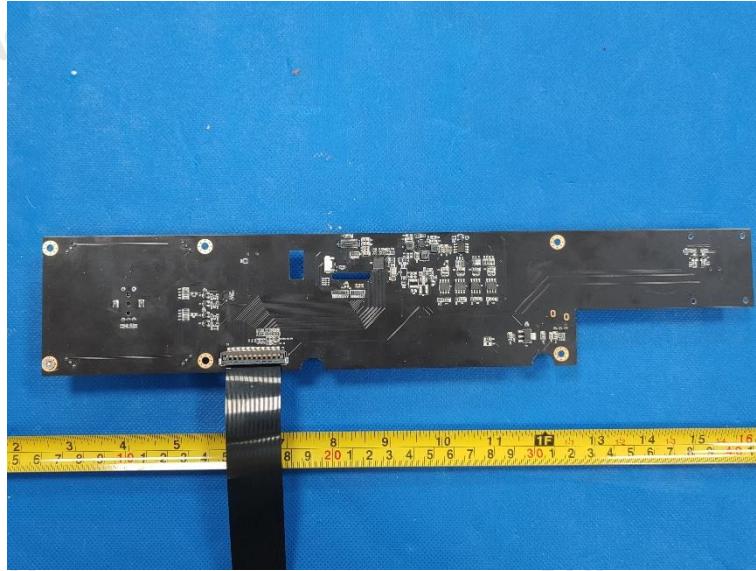
Internal photos











\*\*\*\*\* End of Report \*\*\*\*\*