

New Sentinel Installation Guide

- Verisure technicians use only -



Sentinel What is it?

Sentinel Alarm

Connected to the ATN network, immune to jamming devices

Your everyday experience, free from danger

The Sentinel Alarm by Securitas Direct is a security service that ensures you are protected while optimizing your well – being. It is always connected, on the look – out, to make sure you are fully protected in your home or business.

The Sentinel Alarm even protects you if an intruder uses a frequency jammer near your home or business premises. It can detect the device and send a warning through the exclusive Securitas Direct ATN network, which is immune to jamming.

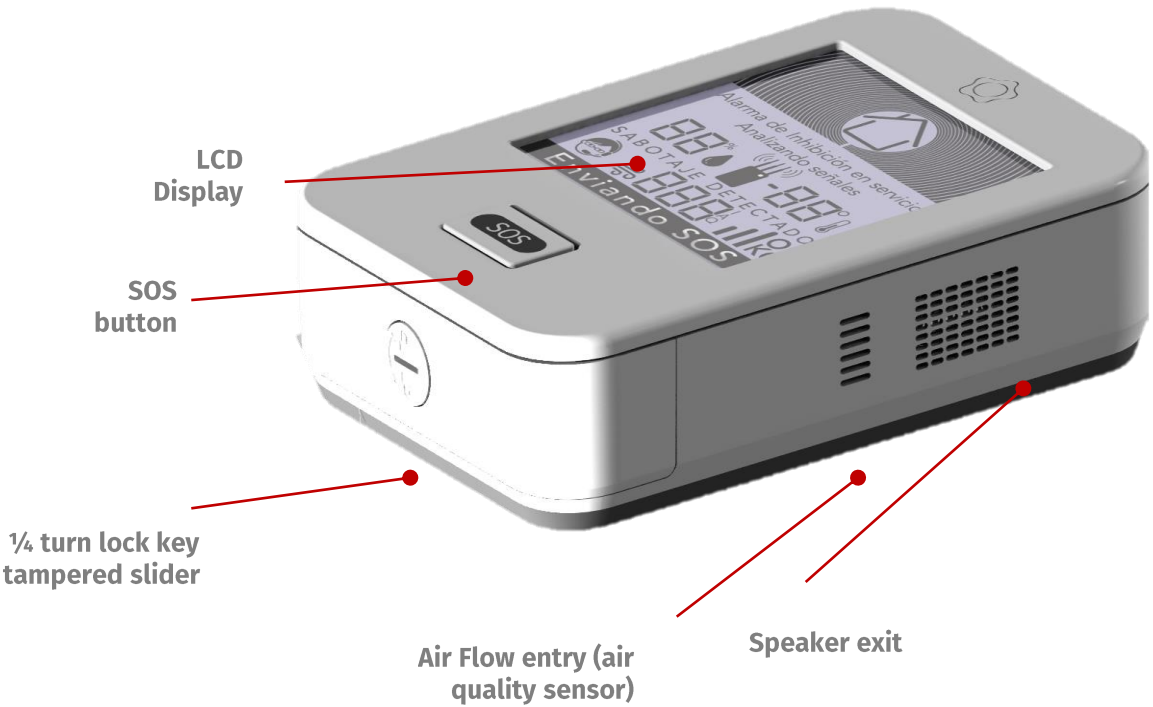
It also protects you from other hazards that can jeopardize your well – being, warning you if the temperature, humidity or air quality reaches risky levels. If the Sentinel alarm detects anything abnormal, it will send an automatic warning to the Alarm Receiving Center. Our experts will then take immediate action to help you.

If you need to ask for help at any time, you can press the SOS button. We will provide immediate assistance by notifying your people of contact or calling the emergency services (112) if necessary.

The Sentinel alarm by Securitas Direct offers you full protection at all times. It is like a security guard, constantly on the look – out to ensure you are fully protected in your home or business.



Product Description

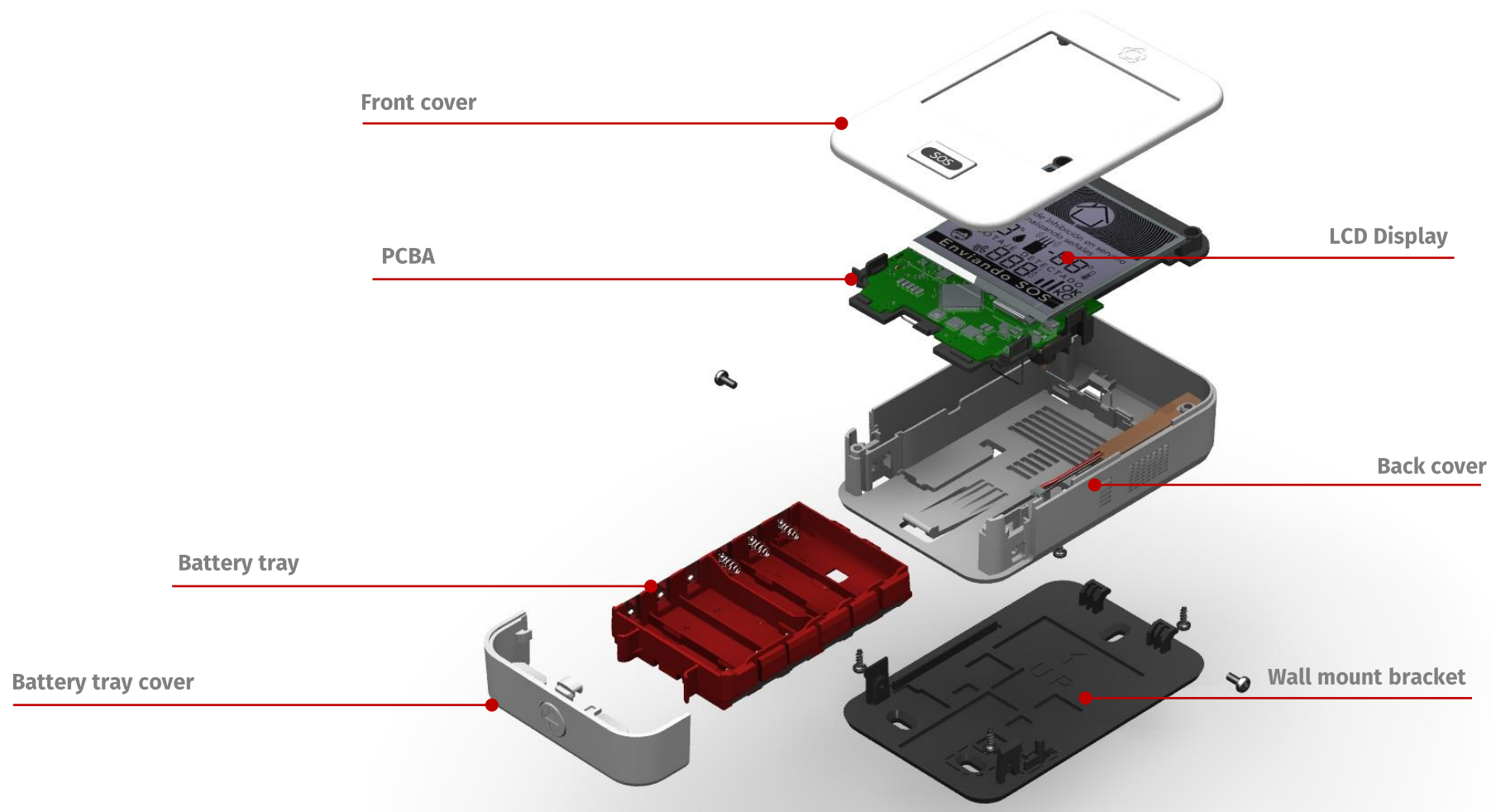


Dimensions	126,8 x 85,3 x 32,50 mm
Weight	350g (batteries included)
Power supply	6x AA alkaline battery (1.5 VDC) For a nominal system input voltage 3.0 VDC
Functionality	SOS LCD Display Jammer Detector (868MHz, GSM900 and DCS1800) Speaker Temperature, Humidity, Indoor air quality
Notifications	Sigfox® Communication LCD Display Speaker
Connectivity	Sigfox Channel
Operating temperature	-10°C to 40°C

The package shall include

- 1 x Sentinel inserted in a protective PE polybag
- 1 x Bracket for mounting on the wall
- 1 x Bag with 3 small screws for wall mounting and 2 screws to fix the device to the wall bracket
- 1 x Datasheet

Product description



LCD Display



Jamming detection devices

Comfort data



Humidity: it monitors relative humidity levels in the air



Temperature: it detects and warns about sudden temperature increases over the comfort limits



Air quality: warning when the air quality reaches unhealthy levels



SOS Emergencies: button to contact CMS immediately in case of emergency

Tamper

Tamper: when the device is manipulated alert is sent

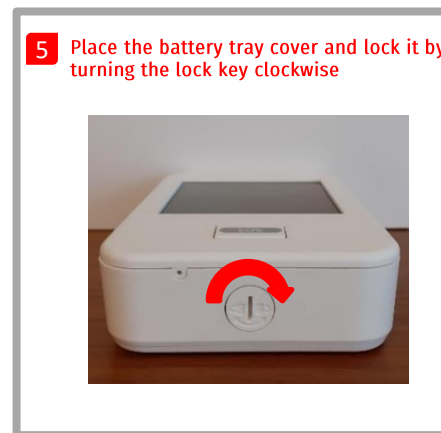
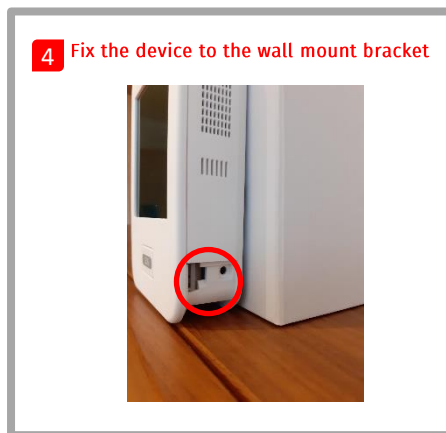
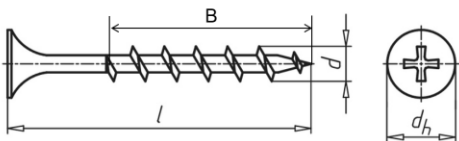
Placement & mounting instructions

Sentinel is designed for indoor usage only, always installed within supervised area

It must be fixed to the wall. When mounting the device, remember that radio coverage for all radio technologies must be considered as well when positioning the device

Screws used for fixating the wall mount bracket shall have the following characteristics:

- $d_h = 8,4$ mm
- $L = 30,0$ mm
- $d = 3,9$ mm
- $B = 25,0$ mm
- Ph2
- Zink plated
- Bugle Head
- Coarse thread



3) Insert the latches on the upper part of the wall mount bracket in the holes on the upper back part of the device. Then, push the bottom part to attach it completely. You will hear a “click” sound when successfully hooked

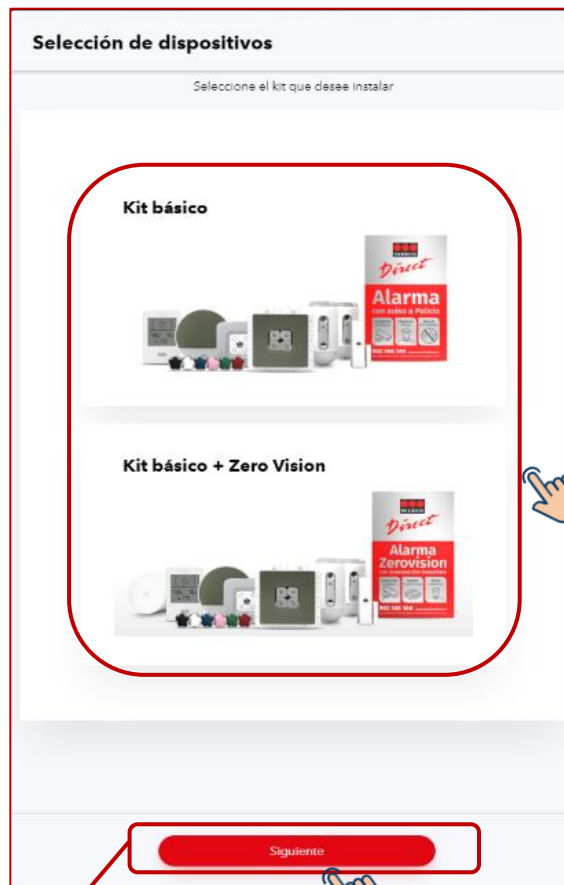
4) Use the remaining 2 screws to fix the device to the wall bracket

5) Put back and lock the battery tray cover

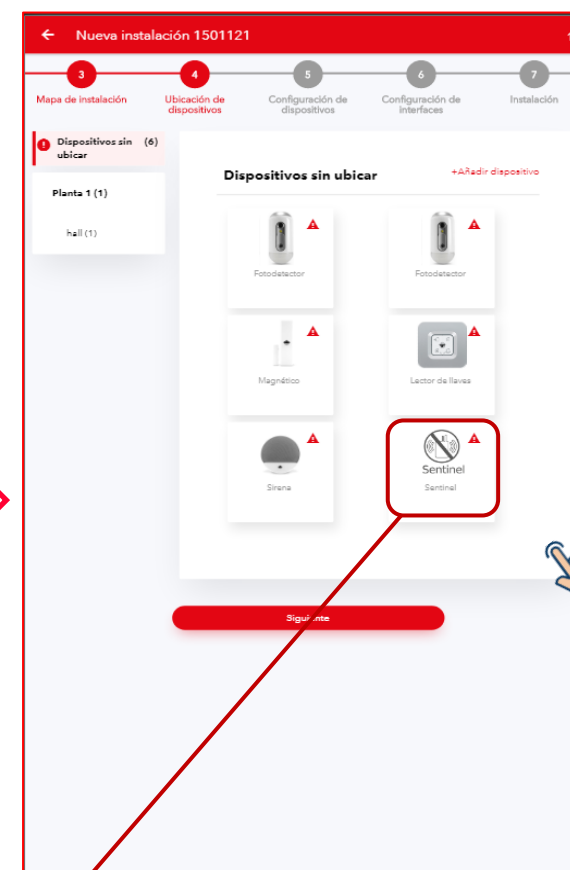
Device configuration from Kit

Sentinel configuration in the alarm system will be done by using the I&M tool. There are a few steps that need to be completed in advance before adding Sentinel to the system:

1. Customer data to be already registered in VSD systems:
 - Name
 - Address
 - Telephone number
 - Email address
 - Birth date
 - Nationality
 - Type of installation
 - Action plan
2. Installer / Technician to log in the I&M tool with his / her user and password
3. Installation number created
4. Fast2 panel or Verisure Central Unit associated to the installation
5. Map of the premises



1. Select one of the two kits available for installation
2. Press "Next"



3. Locate Sentinel in a room within the premises map:
 - Drag & drop in the desired location
 - Or click on the item and select room from combos

Device configuration from Kit

Parámetros Sentinel

Sigfoxid

00945E28

Leer código

Salir

Guardar

4. Enter the Sigfox® ID

- Scanning the bar code from the Sentinel box
- Or writing down the Sentinel Sigfox® ID

5. Save Sentinel Sigfox® ID



Nueva instalación 1501121

Mapa de instalación

Ubicación de dispositivos

Configuración de dispositivos

Configuración de interfaces

Instalación

Dispositivos sin ubicar (0)

Planta 1 (8)

hall (8)

estancia (2)

Planta 1 - estancia

Siguiente

6. SentinelV2 icon will be shown. *Sigfox®ID has been properly recognized*

7. Press "Next"



Instalación 1000011 / Mantenimiento 11000002

Ubicación de dispositivos

Configuración de dispositivos

Configuración de interfaces

Instalación

Validación

Cambiar esquema del inmueble

Planta 1 (9)

111 (8)

Comedor (3)

Planta 2 (11)

Cuanto (3)

333 (4)

111 (2)

222 (2)

Planta 3 (3)

Terraza (3)

Planta 1 - Comedor

Panel Central

Sentinel

Sentinel

Parámetros de Sentinel

Sigfoxid

33333333

Leer código

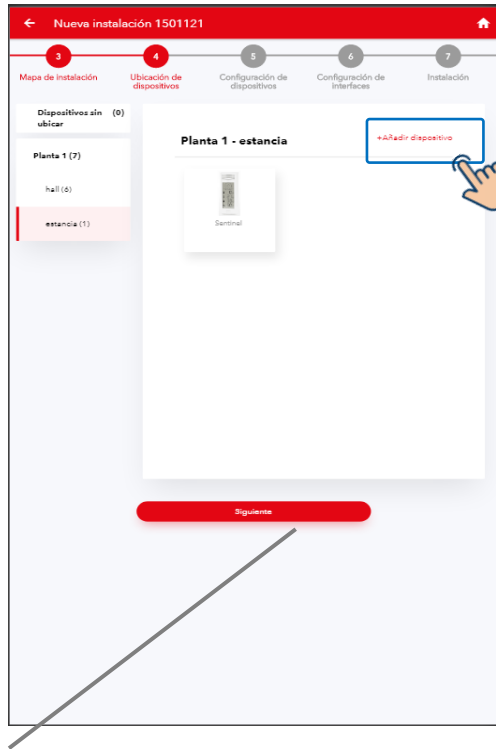
Borrar

Siguiente

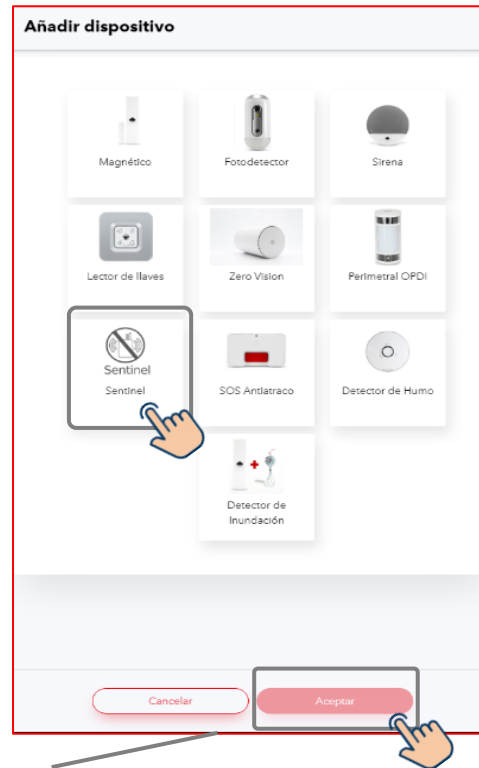
8. SentinelV2 configuration is shown

- Here, SentinelV2 could be removed if needed

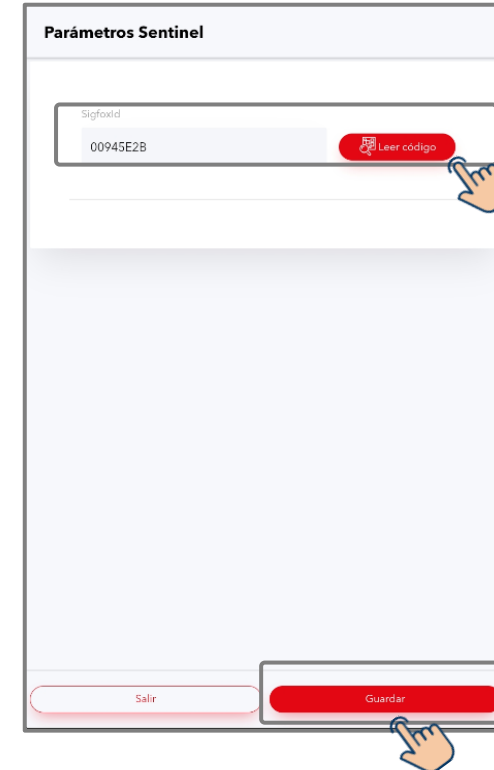
Device configuration outside Kit



1. Click on “Add device”



2. Select “Sentinel”
3. Press “Accept”

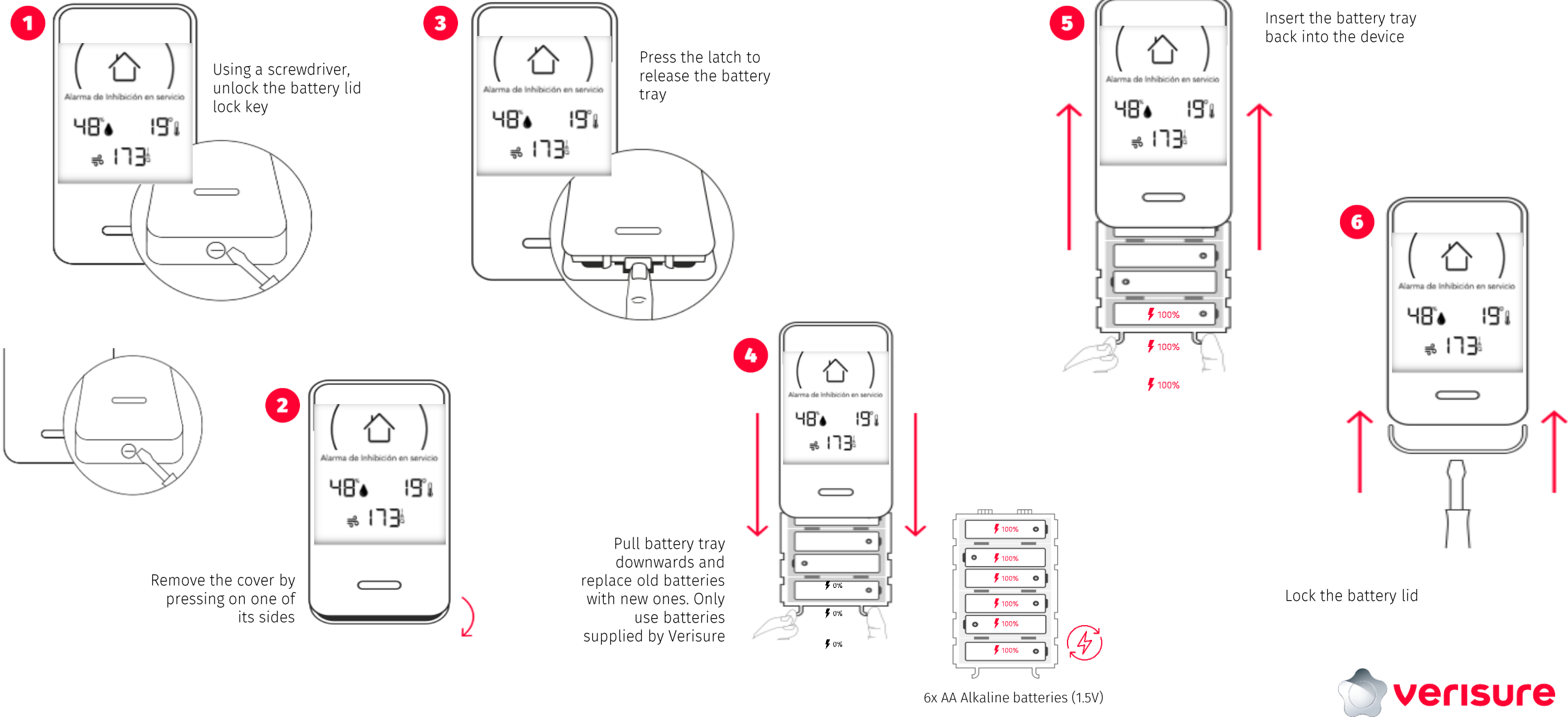


4. Enter Sigfox®ID

- Scanning the bar code from the Sentinel box
- Or writing down the Sentinel Sigfox® ID

5. Save Sentinel Sigfox® ID

Battery replacement





- FCC ID: 2AGMK-GWL-AJV3
- This device complies with part 15 of the FCC Rules. Operation is subject to the following two conditions:
 - (1) This device may not cause harmful interference, and
 - (2) this device must accept any interference received, including interference that may cause undesired operation.
- Changes or modifications made to this equipment not expressly approved by TELECOM DESIGN may void the FCC authorization to operate this equipment.
- Note: This equipment has been tested and found to comply with the limits for a Class B digital device, pursuant to part 15 of the FCC Rules. These limits are designed to provide reasonable protection against harmful interference in a residential installation. This equipment generates, uses and can radiate radio frequency energy and, if not installed and used in accordance with the instructions, may cause harmful interference to radio communications. However, there is no guarantee that interference will not occur in a particular installation. If this equipment does cause harmful interference to radio or television reception, which can be determined by turning the equipment off and on, the user is encouraged to try to correct the interference by one or more of the following measures:
 - Reorient or relocate the receiving antenna.
 - Increase the separation between the equipment and receiver.
 - Connect the equipment into an outlet on a circuit different from that to which the receiver is connected.
 - Consult the dealer or an experienced radio/TV technician for help