

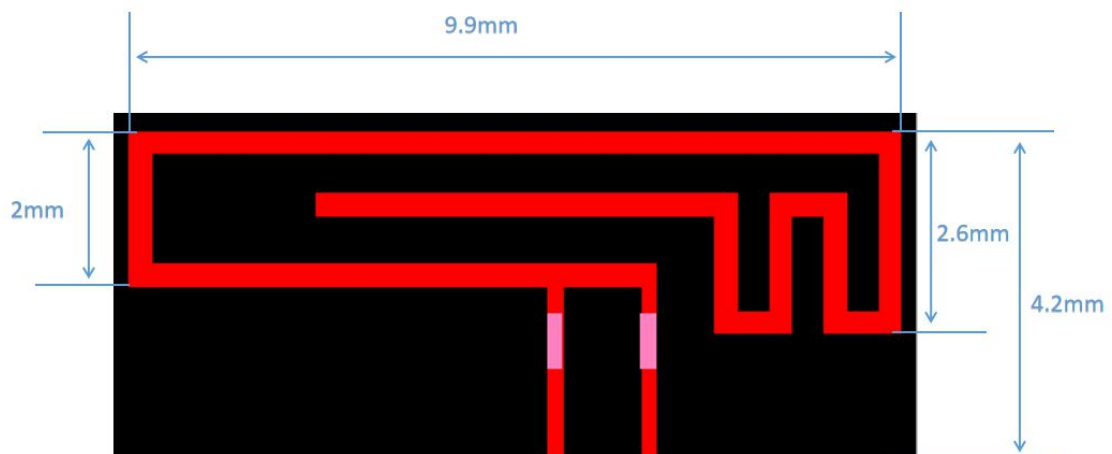


Antenna Datasheet-CSM92F42NIB

1: Antenna Description

Antenna Type	PCB Antenna
Antenna peak gain	1.6dBi
Frequency range	2.402GHz~2.480GHz
Connect type	Direct Connect

2: Antenna picture on the PCB board



3: Antenna radiation of 3D polar

Solution frequency at 2.44G

