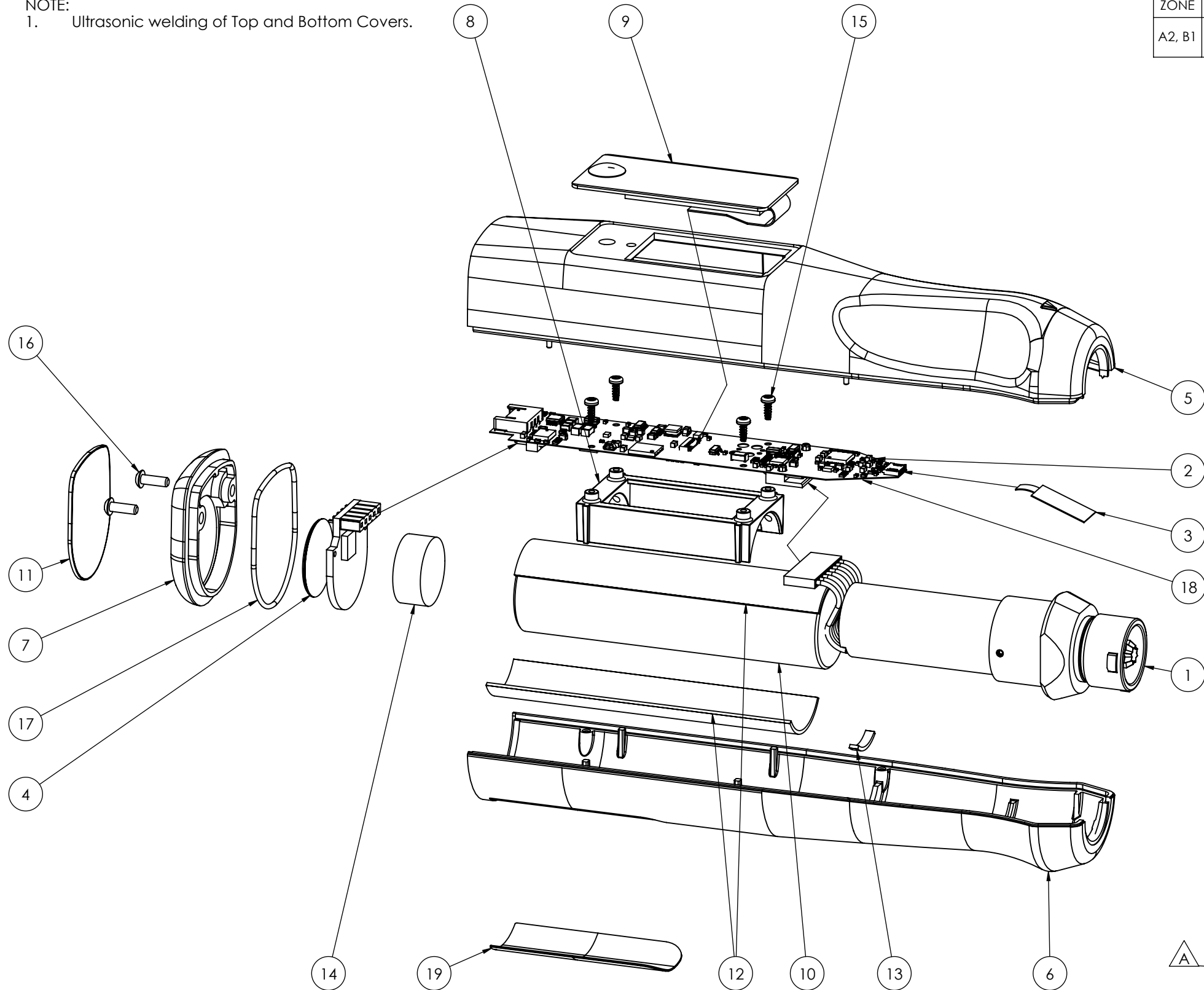


NOTE:
1. Ultrasonic welding of Top and Bottom Covers.

REVISIONS				
ZONE	ECN NO	REV.	DESCRIPTION	DRAWN DATE
A2, B1	DCO-23-13	A	Initial release (Sterling CD23-001)	23-Feb-2024



ITEM NO.	PART NUMBER	DESCRIPTION	QTY.
1	9601-001-001	ELITE PEN DRIVE TRAIN	1
2	9601-001-002	Elite Pen Main PCBA	1
3	9601-001-003	ELITE PEN NFC PCBA	1
4	9601-001-004	ELITE PEN COIL AND BATTERY PCBA	1
5	9601-001-005	ELITE PEN TOP COVER	1
6	9601-001-006	ELITE PEN BOTTOM COVER	1
7	9601-001-007	ELITE PEN BATTERY COVER	1
8	9601-001-008	INTERNAL PEN FRAME	1
9	9601-001-009	DISPLAY SUBASSEMBLY	1
10	9601-001-010	LITHIUM RECHARGABLE BATTERY, 3.6V, 3.3Ah	1
11	9601-001-011	BACK CAP SCREW COVER	1
12	9601-001-012	BATTERY RETENTION FOAM	^A 2
13	9601-001-013	MOTOR SUPPORT PAD	1
14	9601-001-014	CHARGING COIL RETENTION FOAM	1
15	9601-001-015	TORX PLUS ROUND HEAD THREAD FORMING SCREW M1.59 X 4MM LENGTH	4
16	9601-001-016	BHCS, M2 X 0.4, 6MM LENGTH, STAINLESS STEEL, TORX	2
17	9601-001-017	O-RING, BUNA-N, 1 MM WIDE, 28 MM ID	1
^A 18	9601-001-018	THERM-A-GEL GELS T630	A/R
19	9601-001-021	SkinPen ELITE LABEL	1

DO NOT SCALE DRAWING
UNITS: mm
3rd ANGLE PROJECTION
REMOVE BURRS & BREAK ALL SHARP EDGES
TOLERANCES UNLESS OTHERWISE SPECIFIED:
LINEAR: X ± 0.5, X.X ± 0.1, X.XX ± 0.05
ANGULAR: X ± 0.5°, X.X ± 0.25°

DESCRIPTION: ELITE PEN ASSEMBLY
PRODUCT REF.: SkinPen Elite
DRAWN BY: W.CHIU
REVIEWED BY: ALIN VEZENDAN DATE: 02/23/2024
APPROVED BY: - DATE: -
RELEASED DATE: -
Template: FORM-1210 Rev. 01

Drawn By: **CROWN AESTHETICS** Sterling+
PROPRIETARY AND CONFIDENTIAL
THE INFORMATION CONTAINED IN THIS DRAWING IS THE SOLE PROPERTY OF Crown Aesthetics. ANY REPRODUCTION IN PART OR AS A WHOLE WITHOUT THE WRITTEN PERMISSION OF Crown Aesthetics IS PROHIBITED.
PART NO. 9601-001-000 REV. A
DRAWING SIZE: B SCALE 1:1 SHEET 1 OF 1