

Staples

Wireless Mouse Dongle

User's Guide

CAUTION: To use this product properly, please read the user's guide before installing.

Specifications

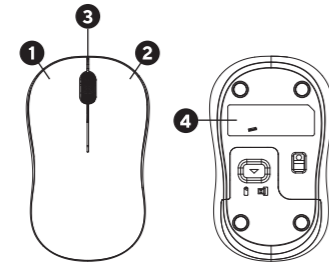
Number of Buttons: 3
 Operating Frequency: 2.4GHz
 DPI Levels: 1200
 Operating Range: <33ft(10m)
 Operating Current: 14mA
 Standby Current: 0.5mA
 Battery: 1 x AA battery
 Weight 44 ± 5g
 Dimensions: 99.5 x 59.7 x 38.5 mm

Package Contents

1x User Manual
 1x Wireless Mouse
 1x USB Receiver

Product Overview

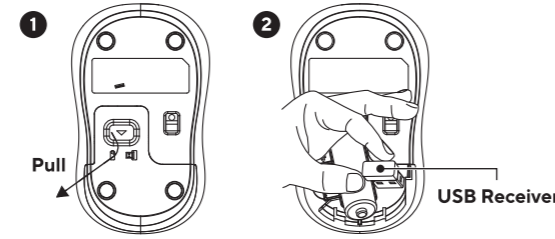
1. Left Button
2. Right Button
3. Vertical Sliding Wheel
4. USB Receiver (inside the battery slot)



Operation Methods

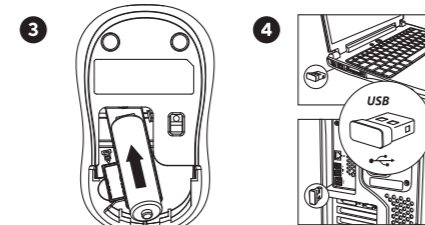
Step 1: Open the battery cover

Step 2: Take out the USB receiver



Step 3: Insert one AA battery into the battery slot. Put battery compartment cover back on.

Step 4: Plug the USB receiver into the USB port of your device.



Note: The USB receiver can be unplugged from the USB port and stored in the battery slot while not in use.

Power Management

Power Savings Mode:

The mouse will automatically go to sleep after 10 minutes of inactivity. Press any button and wait for 3 seconds to reactivate it.

Replacing Batteries

Lift the battery compartment cover up. Replace the spent battery with one new AA battery and put the cover back on (Battery not included).

Note: Make sure that the positive(+) and negative(-) terminals are on the correct sides.

Troubleshooting

If you cannot connect the mouse to your device, or if the mouse is not working, please try the following:

1. Check to see if the USB receiver is properly connected to the USB port of your device.
2. Insert one new AA battery into the battery slot. Press and hold the vertical sliding wheel and the right button together for 3-5 seconds. Generally, the mouse will work when it's successfully paired with the USB receiver.

Note: The mouse should be within 39 inches (1 meter) away from the USB receiver during pairing.

Important Safeguards and Precautions

1. SAVE THESE INSTRUCTIONS—They contain essential safety and operating instructions.
2. Please remove the battery when the mouse is not in use for a long period of time.
3. For indoor use only. Do not expose the mouse to direct sunlight or wet conditions.
4. Do not use the mouse if equipment is damaged.
5. Do not disassemble the product. Disassembly can result in safety hazards.
6. Do not throw or shake the product.



Made in China



100% Satisfaction Guarantee

If you are not completely satisfied with the quality of any Staples® Brands products, simply return it within the applicable return period along with receipt or original package for an exchange or refund. See Staples Returns Policy for details.

Support

1-800-425-0049

FCC Warning

This device complies with part 15 of the FCC Rules. Operation is subject to the following two conditions: (1) This device may not cause harmful interference, and (2) this device must accept any interference received, including interference that may cause undesired operation.

Any Changes or modifications not expressly approved by the party responsible for compliance could void the user's authority to operate the equipment.

Note: This equipment has been tested and found to comply with the limits for a Class B digital device, pursuant to part 15 of the FCC Rules. These limits are designed to provide reasonable protection against harmful interference in a residential installation. This equipment generates uses and can radiate radio frequency energy and, if not installed and used in accordance with the instructions, may cause harmful interference to radio communications. However, there is no guarantee that interference will not occur in a particular installation. If this equipment does cause harmful interference to radio or television reception, which can be determined by turning the equipment off and on, the user is encouraged to try to correct the interference by one or more of the following measures:

- Reorient or relocate the receiving antenna.
- Increase the separation between the equipment and receiver.
- Connect the equipment into an outlet on a circuit different from that to which the receiver is connected.
- Consult the dealer or an experienced radio/TV technician for help.

The device has been evaluated to meet general RF exposure requirement. The device can be used in portable exposure condition without restriction.

This device contains license-exempt transmitter(s)/receiver(s) that comply with Innovation, Science and Economic Development Canada's license-exempt RSS(s). Operation is subject to the following two conditions:

1. This device may not cause interference.
2. This device must accept any interference, including interference that may cause undesired operation of the device.

Le présent appareil est conforme aux CNR d'Industrie Canada applicables aux appareils radio exempts de licence. L'exploitation est autorisée aux deux conditions suivantes :

- (1) l'appareil ne doit pas produire de brouillage, et
- (2) l'utilisateur de l'appareil doit accepter tout brouillage radioélectrique subi, même si le brouillage est susceptible d'en compromettre le fonctionnement.



BLACK

DESCRIPTION
Staples Tech Wireless Optical Mouse Manual

UPC or SCC #
N/A

CLIENT
Staples

DIELINE #
N/A



FILE NAME
ST62601_WirelessMouse_USRMNL_240004431_R1.ai

DIELINE SUBSTRATE
NON-PRINTING COLORS

VENDOR
N/A

SUBSTRATE
Paper

PRINTER
N/A

PRINT PROCESS
N/A

DATE
04/22/2024

DESIGNER
sp1

240004431

LEAD DOCKET: n/a

01

FILE CREATED AT 100%
ILLUSTRATOR CC 2022

Southern Graphic Systems, Canada (SGS&CC) aka Marks Design has made every effort to comply with Health Canada, CPLA, CPLR, CFA, FDR, and FDA rules and guidelines in the production of this artwork. To the best of our knowledge and experience, this artwork adheres to and is compliant with rules governing product-labeling requirements as per Canadian legislation and/or USA legislation. In the event of an inadvertent non-compliance issue that results in the re-work of existing artwork, SGS&CC/Marks Design will, in cooperation with the client, make every effort to rectify the problem, and produce replacement artwork files. The liability of SGS&CC/Marks Design shall be limited to correcting its own product. SGS&CC/Marks Design will not assume any legal or financial responsibility or liability for the contents of any packaging in the case of said contents being unusable because of Health Canada, CPLA, CPLR, CFA, FDR, and FDA packaging non-compliance. The supplied artwork should be approved by the recipient for all content, layout and copy accuracy. This is a mechanical artwork file only. Color rotation to be confirmed by printer or prepress supplier. The UPC code is FPO and should be replaced by your printer or prepress supplier. Please ensure that your prepress supplier prepares the file for printing. Refer to Pantone and process matchbooks for reflection of accurate color, as this is not a color proof. Should the supplied artwork be found to be incorrect, please contact your representative immediately. Copyright © 2024

TORONTO STUDIO 2 DORCHESTER AVENUE, TORONTO, ON M8Z 4W3 CANADA

makemarks.com