

Staples®

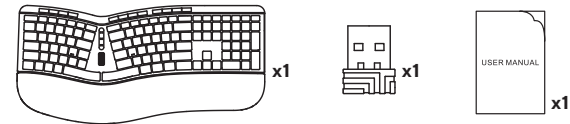
Wireless Ergonomic Keyboard

User's Guide

CAUTION: To use this product properly, please read the user's guide before installing.

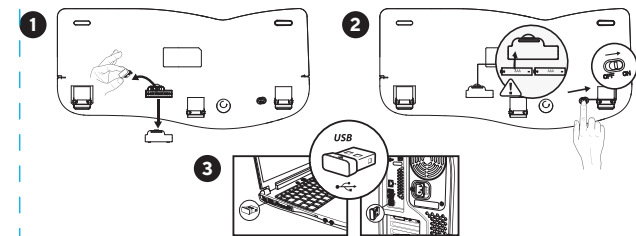
ST62603
Keyboard FCC ID: 2AGLG-TK50FG
Dongle FCC ID: 2AGLG-TK50FG-D

Packing List



1. Keyboard x1
2. USB Receiver (Stored in battery compartment) x1
3. User Manual x1

Instructions



- Step 1:** Take out the USB receiver from the keyboard's battery compartment.
- Step 2:** Place 2xAAA dry batteries into keyboard with correct polarity direction. Then turn on the keyboard.
- Step 3:** Plug USB receiver into computer's USB port.
- Step 4:** Wait for computer to install the drive automatically, and you can use the keyboard after that.

Keyboard Features

1. Designed with scroll wheel, left/right buttons and trackball, it can be used as a mouse to navigate the web pages and control the cursor.
2. With ergonomic wrist rest and separate button layout, it can make your hands put in a more comfortable position and help to relieve hand fatigue of long-time using.

Combined Multimedia Keys

Fn+F1	Fn+F2	Fn+F3	Fn+F4	Fn+F5	Fn+F6
Player	Volume -	Volume +	Mute	Previous Track	Next Track
Fn+F7	Fn+F8	Fn+F9	Fn+F10	Fn+F11	Fn+F12
Play/Pause	Stop	Browser	Email	My Computer	Favorite

Independent Multimedia Keys

1	2	3	4	5	6	7	8	9	10	11	12	13	14	15	16
1. Player	2. Volume -	3. Volume +	4. Mute	5. Previous Track	6. Next Track	7. Play/Pause	8. Stop	9. Browser	10. Email	11. My Computer	12. CONNECT	13. Search	14. Refresh	15. Calculator	16. Favorite

Note:

1. The multimedia functions of keyboard are not available in Mac OS Systems.
2. The keyboard is only workable with AAA alkaline dry batteries. If you're not going to use the product for a long time, please take out the batteries to prevent it from corroding the product.

Solutions for Connecting Problems

1. Turn off the keyboard and turn it on again.
2. Short press CONNECT key and plug the USB receiver into computer.
3. Keep the distance between keyboard and USB receiver within 30cm, and the indicator light of code pairing will flash for 3 seconds and go out. The keyboard will work normally after that.

Note: If the product is still unworkable after above solutions, please repeat these steps for code pairing again. If your problems can't get solved yet after that, please contact our customer service for help. (Email: csforcustomer@gmail.com).

FCC Statement

This device complies with part 15 of the FCC Rules. Operation is subject to the following two conditions:

1. This device may not cause harmful interference, and
2. This device must accept any interference received, including interference that may cause undesired operation.

Any Changes or modifications not expressly approved by the party responsible for compliance could void the user's authority to operate the equipment.

Note: This equipment has been tested and found to comply with the limits for a Class B digital device, pursuant to part 15 of the FCC Rules. These limits are designed to provide reasonable protection against harmful interference in a residential installation. This equipment generates uses and can radiate radio frequency energy and, if not installed and used in accordance with the instructions, may cause harmful interference to radio communications. However, there is no guarantee that interference will not occur in a particular installation. If this equipment does cause harmful interference to radio or television reception, which can be determined by turning the equipment off and on, the user is encouraged to try to correct the interference by one or more of the following measures:

- Reorient or relocate the receiving antenna.
- Increase the separation between the equipment and receiver.
- Connect the equipment into an outlet on a circuit different from that to which the receiver is connected.
- Consult the dealer or an experienced radio/TV technician for help.

To assure continued compliance, any changes or modifications not expressly approved by the party responsible for compliance could void the user's authority to operate this equipment. (Example-use only shielded interface cables when connecting to computer or peripheral devices).
FCC Radiation Exposure Statement:
This equipment complies with FCC radiation exposure limits set forth for an uncontrolled environment. This equipment can be used in portable exposure condition without restriction.



100% Satisfaction Guarantee

If you are not completely satisfied with the quality of any Staples® Brands products, simply return it within the applicable return period along with receipt or original package for an exchange or refund. See Staples Returns Policy for details. **Support:** 1-800-425-0049
Made in China

This device complies with Innovation, Science and Economic Development Canada License exempt RSS standard(s). Operation is subject to the following two conditions: (1) this device may not cause harmful interference, and (2) this device must accept any interference received, including interference that may cause undesired operation of the device.

Le présent appareil est conforme aux CNR d'Innovation, Sciences et Développement économique Canada applicables aux appareils radio exempts de licence. L'exploitation est autorisée aux deux conditions suivantes :

- (1) l'appareil ne doit pas produire de brouillage, et
- (2) l'utilisateur de l'appareil doit accepter tout brouillage radioélectrique subi, même si le brouillage est susceptible d'en compromettre le fonctionnement.

				FILE NAME ST62603_WirelessErgnmKeyboard_USRMNL_240004431_R2.ai
1 BLACK	DIELINE NON-PRINTING COLORS	SUBSTRATE Paper	PRINTER N/A PRINT PROCESS N/A	DATE 05/13/2024
DESCRIPTION Staples Tech Wireless Optical Ergo Mouse Manual	CLIENT Staples	VENDOR N/A	DESIGNER sp1, sp2	
UPC or SCC # N/A	DIELINE # N/A	Southern Graphic Systems, Canada (SGS&CO) dba Marks Design has made every effort to comply with Health Canada, CPLA, CPLR, CFIA, FDR, and FDA rules and guidelines in the production of this artwork. To the best of our knowledge and experience, this artwork adheres to and is compliant with rules governing product labeling requirements as per Canadian legislation and/or USA legislation. In the event of an inadvertent non-compliance issue that results in the re-work of existing artwork, SGS&CO/Marks Design will, in cooperation with the client, make every effort to rectify the problem, and produce replacement artwork files. The liability of SGS&CO/Marks Design shall be limited to correcting its own product. SGS&CO/Marks Design will not assume any legal or financial responsibility or liability for the contents of any packaging in the case of said contents being unusable because of Health Canada, CPLA, CPLR, CFIA, FDR, and FDA packaging non-compliance. The supplied artwork should be approved by the recipient for all content, layout and copy accuracy. This is a mechanical artwork file only. Color rotation to be confirmed by printer or prepress supplier. The UPC code is FPO and should be replaced by your printer or prepress supplier. Please ensure that your prepress supplier prepares the file for printing. Refer to Pantone and process matchbooks for reflection of accurate color, as this is not a color proof. Should the supplied artwork be found to be incorrect, please contact your representative immediately.		
TORONTO STUDIO 2 DORCHESTER AVENUE, TORONTO, ON M8Z 4W3 CANADA				
				makemarks.com

240004431
LEAD DOCKET: n/a

02

FILE CREATED AT 100%
ILLUSTRATOR CC 2022

