



TURNTABLE

USER GUIDE





Content

Introduction	1
Unpacking	1
Features.....	2
Location of Controls.....	3
Mode Selection	4
Unit Operation	4
Replacing the Stylus.....	8
Tips for Better Performance	9
Product Care	10
Product Support.....	11



Introduction

Thanks for purchasing the turntable player from GPO. This retro-themed unit adds a touch of classic style to any room, while still providing amazing audio quality through the built in speakers. To get the most from your new turntable player, please read these instructions carefully before use, and keep them in a safe place for future reference.

Unpacking

This package contains:

1x SW-196F Ambassador

1x Turntable Needle (fitted)

1x Turntable Slip Mat (placed on the turntable)

1x Blank USB Stick

1x DC Power Cable

1x Aux-in Cable

1x Manual

Carefully remove all of the contents from the packaging. Make sure you retain and store this manual for future reference. When choosing a location for the unit, avoid inclines, direct sunlight or sources of heat and moisture.

1

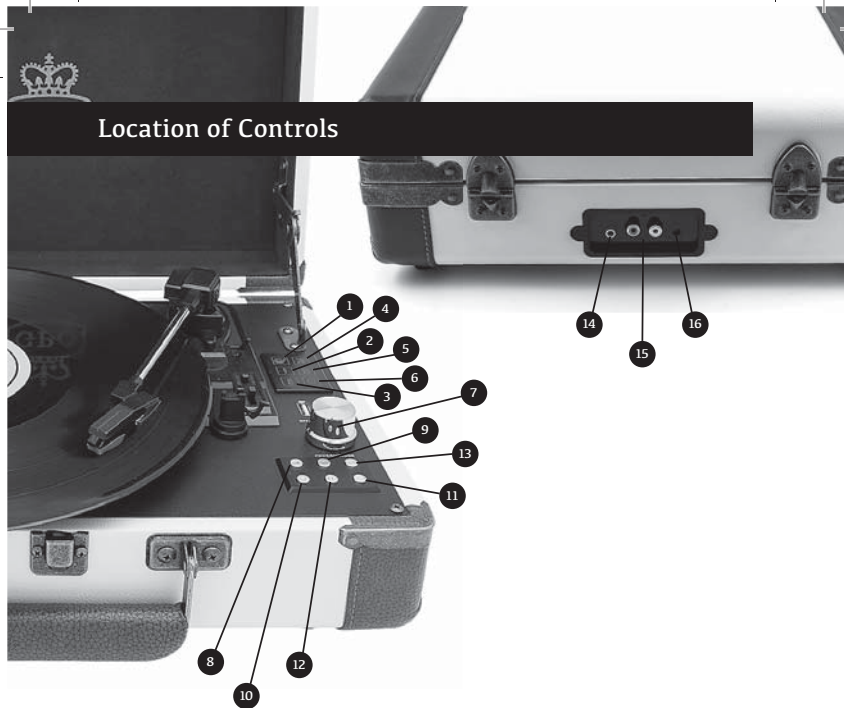
Keep all of the ventilation holes clear, and do not place any equipment on top of the unit as this can lead to damage. Only remove the stylus guard from the stylus assembly during use. Leaving the guard in place during storage will protect your stylus from damage.

Features

Your turntable unit has the following features:

1. 3-speed turntable (33, 45 or 78 RPM)
2. Belt drive and semi-automatic play tone arm
3. Ceramic stereo cartridge and jewel stylus
4. Built-in 45 RPM adapter
5. Aux-in and Aux-out functions
6. Built-in stereo speakers
7. Rechargeable battery
8. Bluetooth functionality

Location of Controls



1. Turntable Indicator Light
2. Aux-in Indicator Light
3. USB Indicator Light
4. Bluetooth Indicator Light
5. Battery Power Indicator Light
6. Recording Indicator Light
7. Power On/Off and Volume
8. Mode Select
9. Stop
10. Record
11. Fast Forward
12. Rewind
13. Play/Pause
14. Aux-in Jack
15. Aux-out Jack
16. DC Power Jack

Mode Selection



Turntable Mode

play a vinyl record through the unit's built-in speakers



USB Mode

play MP3 files stored on an external USB drive



USB Record Mode

record your vinyl to MP3 files on an external USB drive



Aux-in Mode

play music from your music player, smartphone or other device through the unit's built in speakers



Bluetooth Mode

connect the unit to external Bluetooth-enabled speakers



Battery Level Indicator

Displays the current charge status of the rechargeable battery



To select the Turntable, USB, Aux-in or Bluetooth mode, press the mode select button until the relevant indicator light is illuminated.



Press to STOP music playing in USB mode. Press to STOP vinyl recording in Record mode.



PLAY or PAUSE the music under USB mode.



Press to record your vinyl records, more information in record section.



Press to the NEXT song under USB mode.



Press to the PREVIOUS song under USB mode.

Unit Operation

Your turntable player has a number of modes of operation. Each one will allow you to play music from a different source using the unit's two in-built full range stereo speakers



Turntable Mode

1. Turn on the unit power
2. Select Turntable mode using the mode select button
3. Choose the correct speed setting, using the 45RPM adapter if needed, and place the vinyl record onto the turntable
4. Place the tone arm into the correct position to begin playback
5. The turntable will stop automatically when the record has finished, and the tone arm will return to the original position
6. Use the volume controls to set the desired sound levels



AUX-IN Play Mode



1. Turn on the unit power
2. Select Aux-in mode using the mode select button
3. Connect your chosen device to the unit's aux-in jack using the cable provided
4. Press the play/pause button to begin playback
5. Use the volume controls to set the desired sound levels

USB Mode

1. Turn on the unit power
2. Select USB mode using the mode select button
3. Connect your USB device to the unit using the USB slot
4. Press the play/pause button to begin playback
5. Use the volume controls to set the desired sound levels
6. To record from vinyl to your device, select USB record mode
7. Press record to begin recording
8. Press stop to cancel recording



Bluetooth Mode

The Bluetooth mode allows you to stream your vinyl to any Bluetooth enabled speaker or headphones.

1. Turn on the unit power
2. Select Bluetooth mode by holding the mode button down for three seconds while in turntable, USB or Aux-in mode
3. The Bluetooth indicator light will flash rapidly as the unit searches for nearby Bluetooth-enabled devices.
4. When paired the blue light will flash shortly with a three second interval
5. If the devices fail to sync, please repeat points 1-4.
6. Use the volume controls to set the desired sound levels
7. Hold down the stop button for three seconds to turn off Bluetooth mode and move straight to turntable mode

Please note: When pairing the Ambassador to your Bluetooth speaker or headphones, please ensure that the device you wish to stream vinyl to is set to pairing mode. This will allow them to sync.

Vinyl Record Mode

1. Press the mode button until the red LED light next to Turntable is illuminated.
2. Insert a blank USB stick into the slot
3. Place the desired vinyl onto the turntable and begin playing.
4. Press the record button on the control panel, the red light next to record will begin to flash. Press the record button once to record the vinyl in one track, press the record button twice to split the tracks.

Charging the Battery

The battery level indicator displays the current charge status of the unit's rechargeable battery.

While operating on mains power via the DC cable and jack, the unit will automatically begin to charge the inbuilt battery. The battery indicator light will indicate how the charging is progressing:

Red: *The unit needs to be charged*

Green: *The unit is charging*

Blue: *The unit has fully charged*

Line Out

To use your Ambassador turntable with external speakers, connect your speakers to the unit's Aux-out jack.

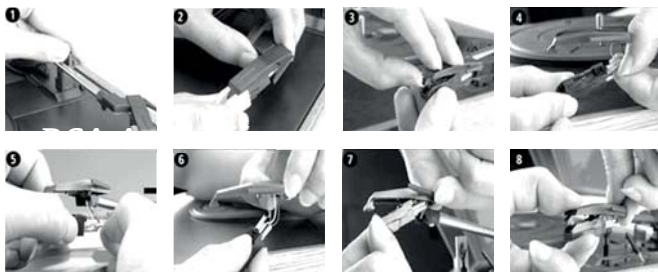
Headphones Out

Headphones can be connected using the Aux-out jack.

RCA Audio Out

An RCA cable is included with you GPO Ambassador, you will require this cable to connect to extra speakers.

Replace Stylus



The unit's stylus will need replacing regularly.
To replace the stylus:

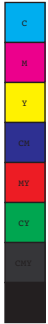
1. Push the arm lock to release the tone arm
2. Remove the cap from the cartridge to expose the needle
3. Carefully remove the cartridge from the socket
4. Completely remove the stylus needle from the cartridge
5. Carefully place a new stylus needle into the cartridge
6. Place the cartridge back into the socket
7. Put the cartridge cap back in place
8. Re-engage the arm lock

The turntable's stylus needs to be replaced every 3-4 months for best performance. To buy a replacement stylus, go to www.gporetro.com or visit one of our stockists.

Tips for Better Performance

To get the best possible performance from your turntable, please ensure that you:

- Always handle the unit carefully, and take care to lift it from the centre or both edges.
- Do not touch the stylus tip with your finger, and avoid bumping it onto the turntable mat or the edge of a record.
- Regularly clean the stylus tip using a soft brush in a back-to-front motion.
- Never use harsh chemicals or solvents on any part of the turntable system.
- Ensure that the unit is unplugged and the tone arm is secured before moving.



Product Care

Your SW-196F record player will provide you with years of listening pleasure, as long as it is properly cared for. To ensure that the unit remains in working condition, please take care to:

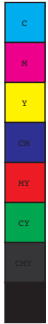
- Keep the unit clean, dry, and away from any potential sources of splashing or dripping, such as vases.
- Avoid areas with high levels of humidity – such as kitchens and bathrooms, and those with extreme temperatures of 35°C or higher.
- Do not let any loose items fall into the unit. If this happens, unplug the unit and call our support team for advice.
- Always unplug the unit before cleaning.
- Take care when cleaning and wiping the unit's plastic parts and finish, and use only a dry dust cloth. The front panel can be cleaned gently with a damp cloth and mild soap.
- Store the unit horizontally. If placed on an incline, the unit's playback may be affected.
- Avoid condensation. If the unit is moved from a cold to a warmer location, please wait 30 minutes before operation.
- Disconnect the power supply after use.



Product Support

For more advice or assistance, please visit www.gporetro.com, or call our support team on 0845 521 4095.

Please note, for your personal safety you **SHOULD NOT** attempt to open the unit's casing. Opening the casing voids your warranty, and no user serviceable parts are contained inside





This device complies with Part 15 of the FCC Rules. Operation is subject to the following two conditions: (1) This device may not cause harmful interference, and (2) this device must accept any interference received, including interference that may cause undesired operation.

Caution: Changes or modifications not expressly approved by the party responsible for compliance could void the user's authority to operate the equipment.

NOTE: This equipment has been tested and found to comply with the limits for a Class B digital device, pursuant to part 15 of the FCC Rules. These limits are designed to provide reasonable protection against harmful interference in a residential installation. This equipment generates uses and can radiate radio frequency energy and, if not installed and used in accordance with the instructions, may cause harmful interference to radio communications. However, there is no guarantee that interference will not occur in a particular installation. If this equipment does cause harmful interference to radio or television reception, which can be determined by turning the equipment off and on, the user is encouraged to try to correct the interference by one or more of the following measures:

- Reorient or relocate the receiving antenna.
- Increase the separation between the equipment and receiver.
- Connect the equipment into an outlet on a circuit different from that to which the receiver is connected.
- Consult the dealer or an experienced radio/TV technician for help.





www.gporetro.com

