

label A

Model: GPO PR50 OVAL TURNTABE

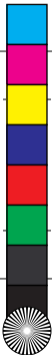
Power: DC 9V 1A

Power Consumption: 3W

FCC ID: 2 AGLCSW-608

Made in China

This device complies with Part 15 of the FCC Rules.  
Operation is subject to the following two conditions:  
1. This device may not cause harmful interference, and  
2. This device must accept any interference received,  
including interference that may cause undesired  
operation.





location A



label B



**CAUTION**  
**DO NOT OPEN**



**Risk of Electric Shock**

WARNING: SHOCK HAZARD - DO NOT OPEN  
AVIS: RISQUE DE CHOC ELECTRIQUE-NE PAS OUVRIR





location B

