

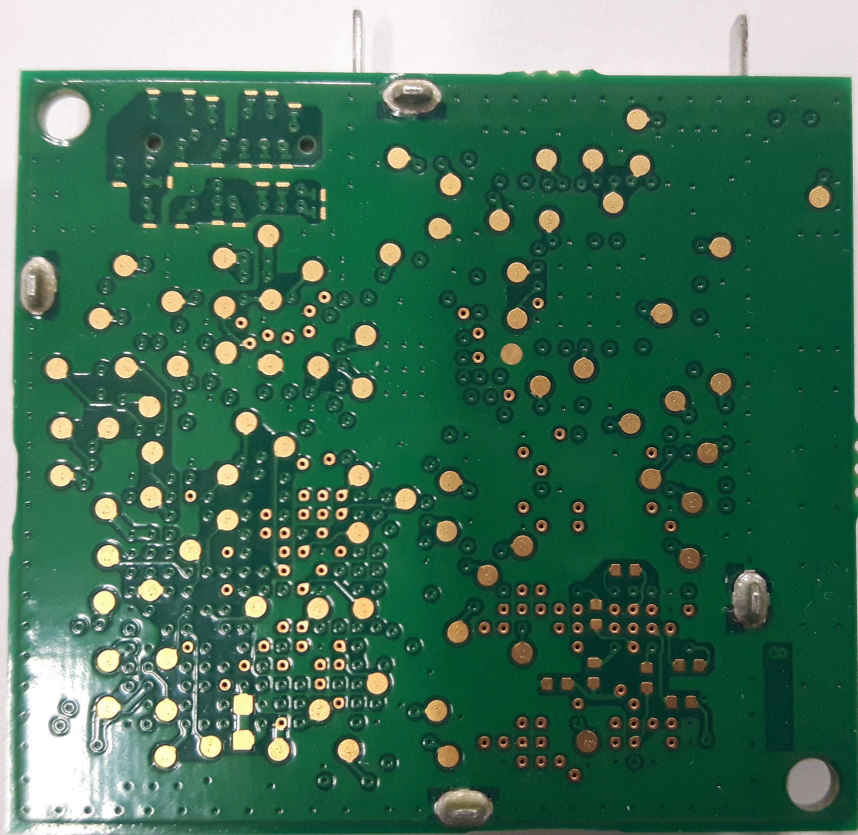


S/N: LF
UZ5F0
017AA

M.U.N. FCC
ID19

 **MODEL: FC6000+**
Made in China
 **Bluetooth**
stereo
Input: 3.3V - 1.8V

 FCC ID:
IC:
PI215004AA 03.59.02-hsae
S/N: PF815004AA5G000025





M:LF S/N: LF
UZ5F0
017AA

FIDELIX
1445A

Parr
770L41155

211102

92B28 U10 JB36

I02

94V-0

U4010