

WELCOME

Visit www.FINISinc.com/registration to register your device. When registration is complete, you will be enrolled in the warranty and replacement program. Proof of purchase required.

Visit www.FINISinc.com/SwimsenseLive to download the multilingual Swimsense Live Instruction Manual for detailed information.

瀏覽 www.FINISinc.com/SwimsenseLive 下載多國言版本的 Swimsense Live 指引手冊以了解詳情

Veillez consulter le site www.FINISinc.com/SwimsenseLive et télécharger le mode d'emploi multilingue du Swimsense Live pour de plus amples informations

DEU: Gehen Sie zum Herunterladen der mehrsprachigen Gebrauchsanweisungen und detaillierten Informationen von Swimsense Live auf www.FINISinc.com/SwimsenseLive

HEBREW TEXT

Visite www.FINISinc.com/SwimsenseLive per scaricare il manuale multilingue d'Istruzioni Swimsense Live

詳細な情報はたちのウェブサイト(www.FINISinc.com/Swimsense-Live)にて他言語の)Swimsense Live・インストラクション・マニュアルをダウンロードしてください。

Visite www.FINISinc.com/SwimsenseLive para baixar o Manual de Instruções multilíngue de Swimsense Live

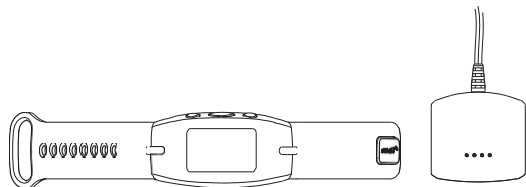
Mocewuwe+au canw www.FINISinc.com/SwimsenseLive u cua~anwe u+cwpyuyuD uo

Para más información, visite www.FINISinc.com/SwimsenseLive para descargar el Manual de Instrucciones Swimsense Live plurilingüe

Important: For all technical issues, please contact FINIS.
www.FINISinc.com/support
USA 800.388.7404
EU: +359 2 936 86 36

INCLUDED

Swimsense Live
USB Magnetic Dock

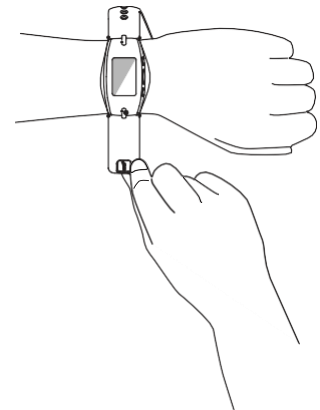


SPECIFICATIONS

Samsung Galaxy 3+ /Honeycomb+
iPhone 4+/iOS 7+
mobile platforms Android® and Apple®
Goggle Play®
Apple App Store®
Will only be mobile/android/apple compatible –
talk to developers
Pentium® III 500 MHz or higher recommended
Windows XP®(service pack 1 or higher) or
Windows Vista® Windows 7®
Windows 8®
Mac® OS9X or higher
250 MB available hard drive space
128 MB RAM (256 recommended)

HOW TO WEAR

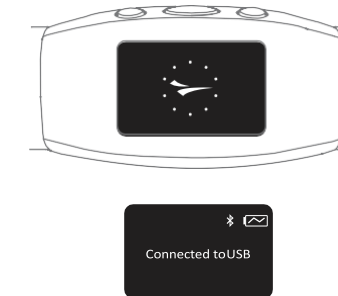
Place Swimsense™ Live Securely on wrist and buckle to desired tightness. Orient so that you may easily see the OLED display



CHARGING

Charge your unit fully before first use. Device will turn off automatically when battery is depleted

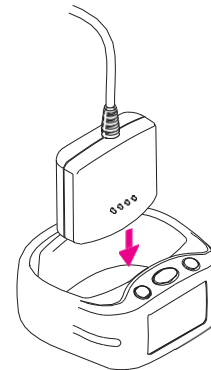
- A. The blinking battery icon indicates charging
- B. Takes ---- hour(s) to charge from low to full
- C. The full battery icon indicates a full charge



CONNECTING

Use USB magnetic dock for charging and updating firmware

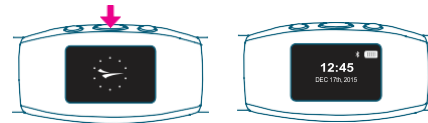
1. Align connectors with the 4 pins on the USB magnetic dock
2. Directly connect USB to the computer's USB port



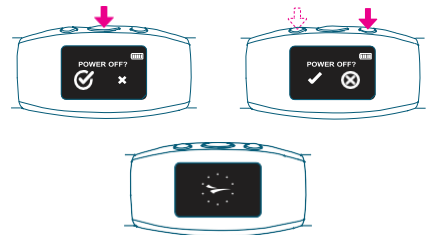
POWER ON/OFF

To POWER ON: press the Select/Center Button once, FINIS logo

will appear



To POWER Off: Press and hold the Center Button for 3 seconds



SWIM MODE

scroll through the Menu use the Up/Left or Down/Right buttons

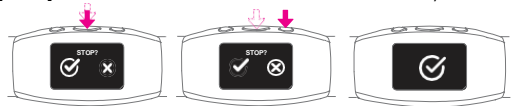
To START

Device will read "READY?"
Select either [check] for Yes or [X] for No
A countdown will commence and Swimsense Live will begin recording workout data



To End

press the Center Button and Swimsense Live will read "STOP?" [UI SCREEN Image]
Select either [check] for Yes or [X] for No
[Check] select indicates that the workout has been successfully saved

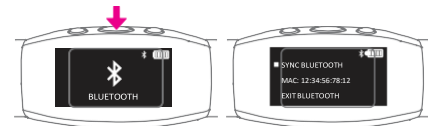


PAIRING

Establishing a connection between Bluetooth-enabled FINIS

devices and the FINIS Live™ App

A. Locate MAC Address on the Swimsense Live
a. MAC ADDRESS: is found under the BLUETOOTH menu item



SYNCING

Must Exit "SWIM" mode to sync data

- A. Press the Sync Button in FINIS Live to view latest workout
- B. Connect USB to computer to begin charging and Data Sync
- C. FINIS logo animation will display

DOWNLOAD THE FINIS LIVE APP

- A. Samsung Galaxy 3+ /Honeycomb+, iPhone 4+/iOS 7+
- B. Apple App Store® and Google Play

a. Please note: Previous Streamline account-holders can use existing login information



FCC Statement

This device complies with Part 15 of the FCC Rules. Operation is subject to the following two conditions: (1) This device may not cause harmful interference, and (2) This device must accept any interference received, including interference that may cause undesired operation.

The grantee is not responsible for any changes or modifications not expressly approved by the party responsible for compliance. Such modifications could void the user's authority to operate the equipment.

This equipment has been tested and found to comply with the limited for a Class B digital device, pursuant to part 15 of the FCC Rules. These limits are designed to provide reasonable protection against harmful interference in a residential installation. This equipment generates, uses, and can radiate radio frequency energy and, if not installed and used in accordance with the instructions, may cause harmful interference to radio communications. However, there is no guarantee that interference will not occur in particular installation. If this equipment does cause harmful interference to radio or television reception, which can be determined by turning the equipment off and on, the user is encouraged to try to correct the interference by one or more of the following measures:

- Reorient or relocate the receiving antenna.
- Increase the separation between the equipment and receiver.
- Connect the equipment into an outlet on a circuit different from that to which the receiver is connected.
- Consult the dealer or an experienced radio/TV technician for help.

IC Statement

This device complies with Industry Canada license-exempt RSS standard(s). Operation is subject to the following two conditions: (1) this device may not cause interference, and (2) this device must accept any interference, including interference that may cause undesired operation of the device.
CAN ICES -3(B)/NMB-3(B)

Le présent appareil est conforme aux CNR d'Industrie Canada applicables aux appareils radio exempts de licence. L'exploitation est autorisée aux deux conditions suivantes:

- (1) L'appareil ne doit pas produire de brouillage;
 - (2) L'utilisateur de l'appareil doit accepter tout brouillage radioélectrique subi, même si le brouillage est susceptible d'en compromettre le fonctionnement.
- CAN ICES-3(B)/NMB-3(B)

The Swimsense Live is an intelligent watch that can detect swimmer 4 swimming style (Free/Breast/Back/Butterfly) and turn around new lap (detected by magnetometer) when the last lap finished.

Swimsense Live Bluetooth Swim Watch

QUICKSTART GUIDE