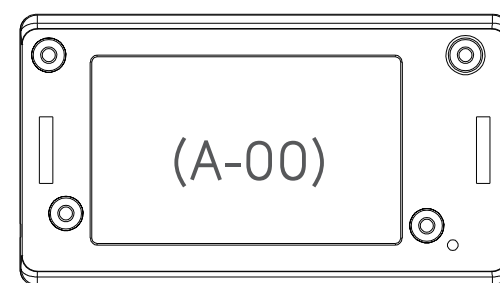


SAFETY NOTE

- 1, This appliance can be used by children aged from 8 years and above and persons with reduced physical, sensory or mental capabilities or lack of experience and knowledge if they have been given supervision or instruction concerning use of the appliance in a safe way and understand the hazards involved.
- 2, Children shall not play with the appliance.
- 3, Cleaning and user maintenance shall not be made by children without supervision.
- 4, If the supply cord is damaged, it must be replaced by the manufacturer, its service agent or similarly qualified persons in order to avoid a hazard.
- 5, **WARNING:** the drive shall be disconnected from its power source during cleaning, maintenance and when replacing parts.
- 6, The instructions shall state that the A-weighted emission sound pressure level of the drive is equal to or less than 70 dB(A), e.g. by writing $L_{pA} \leq 70 \text{ dB(A)}$.
- 7, The mass and the dimension of the driven part shall be compatible with the rated torque and rated operating time.
- 8, The type of driven part the drive is intended for.
- 9, **WARNING:** Important safety instructions. It is important for the safety of persons to follow these instructions. Save these instructions.
- 10, Do not allow children to play with fixed controls. Keep remote controls away from children
- 11, Frequently examine the installation for imbalance and signs of wear or damage to cables and springs. Do not use if repair or adjustment is necessary
- 12, Watch the moving shutter and keep people away until he shutter is completely closed
- 13, **WARNING:** Important safety instructions. Follow all instructions, since incorrect installation can lead to severe injury.
- 14, Before installing the drive, remove any unnecessary cords and disable any equipment not needed for powered operation



AUTOMATE | Core Tilt Motor



FCC Warning:

This equipment has been tested and found to comply with the limits for a Class B digital device, pursuant to part 15 of the FCC Rules. These limits are designed to provide reasonable protection against harmful interference in a residential installation. This equipment generates, uses and can radiate radio frequency energy and, if not installed and used in accordance with the instructions, may cause harmful interference to radio communications. However, there is no guarantee that interference will not occur in a particular installation. If this equipment does cause harmful interference to radio or television reception, which can be determined by turning the equipment off and on, the user is encouraged to try to correct the interference by one or more of the following measures:
—Reorient or relocate the receiving antenna.

—Increase the separation between the equipment and receiver.

—Connect the equipment into an outlet on a circuit different from that to which the receiver is connected.

—Consult the dealer or an experienced radio/TV technician for help.

MODIFICATION: Any changes or modifications not expressly approved by the grantee of this device could void the user's authority to operate the device.

This device complies with part 15 of the FCC Rules. Operation is subject to the following two conditions:
(1) This device may not cause harmful interference, and
(2) This device must accept any interference received, including interference that may cause undesired operation.

IC :

-English:

This device complies with Industry Canada RSS standard(s). Operation is subject to the following two conditions: (1) this device may not cause interference, and (2) this device must accept any interference, including interference that may cause undesired operation of the device.

2. Changes or modifications not expressly approved by the party responsible for compliance could void the user's authority to operate the equipment.

-French:

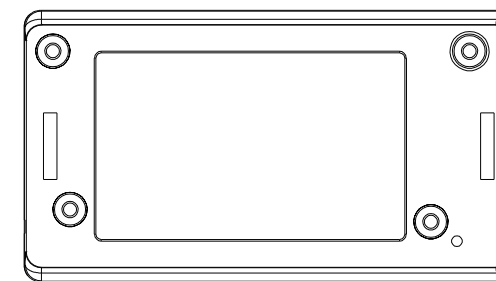
Le présent appareil est conforme aux CNR d'Industrie Canada applicable aux appareils radio

Exempts de licence. L'exploitation est autorisée aux deux conditions suivantes :

(1) l'appareil ne doit pas produire de brouillage, et (2) l'utilisateur de l'appareil doit accepter tout brouillage radioélectrique subi, même si le brouillage est susceptible d'en compromettre le fonctionnement."I.

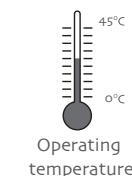
Product introduction

⚠ One motor maximum can store 10 channels, over 10 channels, if still need add new channels, it will be repeating covered in turn from second channel.



Functional features:

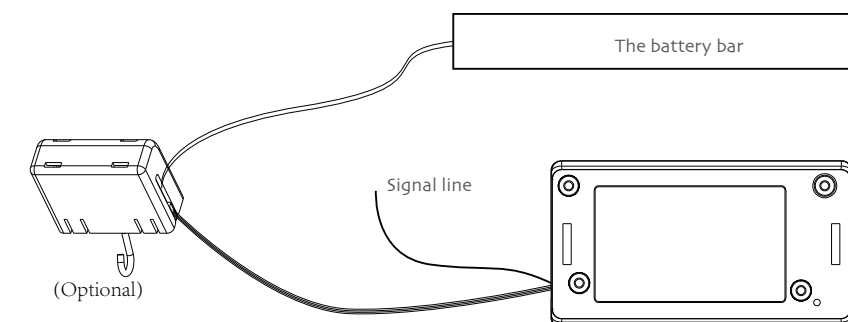
- Electronic Limit
- Stall Protection
- Program Button
- Solar Charging
- Reset to Factor Mode
- Unpair Single Emittert
- Switch Direction
- Built-in Receiver
- Jog & Tilt
- Preferred Stop Position
- Low Power Consumption, Suitable for External Battery Power



Parameters (More models and parameters are subject to the nameplate)

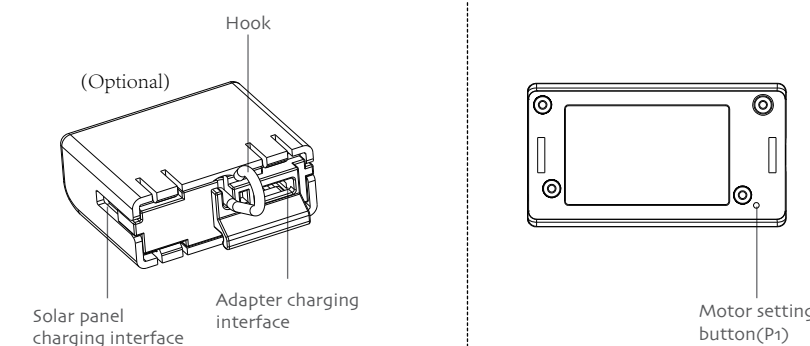
Type	MT01-4001-069001
Rated Torque(N.m)	0.6N.m
Rated Speed(RPM)	10RPM
Rated Voltage(V)	8.4V
Rated Current(A)	0.54A
Rated Power(W)	5W
Emission Frequency(MHz)	433-925MHz

Connection mode

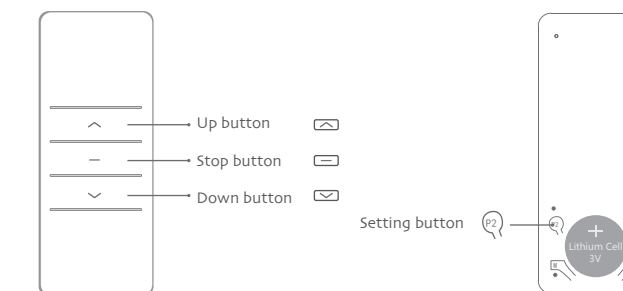


Note: it can be used with hook controller and battery rod, or only with battery or adapter.

Button specification



Note: The left and right rotation of the hook controls the motor to reverse and the centering motor of the hook stops.



Operation note

⚠ Please read the following precautions before use:

1. Not operating under low voltage motors:
 - ① When the power supply voltage is lower than 6.5V, the motor stops running, and it can not start until the voltage exceeds 6.8V.
 - ② When the power supply voltage is lower than 7.2V, the motor runs continuously and the buzzer will beep 10 times.
 - ③ When the power supply voltage is lower than 6.2V, the motor stops the buzzer beeping, and the voltage can be started only when the voltage is greater than 6.5V.
2. Operating:
 - ① The valid interval of the emitter button is 10s, the emitter will quit the set after 10s;
 - ② The motor will run or beep for hint, please do the next step after the hint.
3. Set limit position:
 - ① After the up/down limit position setting, and the up/down limit position can't at the same position;
 - ② After limit setting, with power off and memory function;
 - ③ Into the match-code status 2 minutes later, it will quit out the setting limits status automatically;
 - ④ It will delete every memory and restore the factory settings.
4. When the motor running without any operation, the maximum running time is 6 minutes, it will stop automatically.
5. If the emitter lost, please setting up again with new emitter.



User manual

AUTOMATE | Core Tilt Motor

FACTORY MODE

1 Setting up

Stop

Press 2s → loosen P1 → T<10s → Press 2s → Setting up is ok

Note: If press the up button, the curtains run down, please perform a reversing operation; If not within 10s to be on the code emitter or no legal STOP button code, 10s limit to time, will automatically exit the setting up mode; After the success of the code will delete the original limit settings and motor running mode speed settings, restore the factory value.

2 Switch direction

Up → Up+Down

Press 1s → Press 2s → Successful change the direction

Note: After the success of the reversing, retain all motor original settings.

3 Limit position setting

1, Set up limit Up → Up+Stop

Press 1s → Run to the required top up position → Press 2s → Up limit is ok

2, Set down limit Down → Stop+Down

Press 1s → Run to the required down bottom position → Press 2s → Down limit is ok

Note: If the limit setting is not completed, the limit setting mode is exited; if you already have a limit, you will continue to use the pre-set limit; After setting up the up and down limit into user mode, press the emitter up button or down button motor to run, release the button motor to stop running; When only one limit is set, the commutation operation is invalid.

USER MODE

1 Jog mode switching

Up+Down → Stop

Press 5s → Press 1s → Switch to jog mode 1 / Switch to jog mode 2

Note: In the jog mode 1, short press the up or the down button to release, the motor jog runs; Press and hold the up or down button to run the motor continuously, release the button motor and stop running; In the jog mode 2, short press up or down button motor for jog; Long press the up or down button for more than 2s, the motor runs continuously, release the button motor to continue running.

2 Preferred stop position setting

P2 → Stop → Stop

1, Set preferred stop position

After the up limit and down limit setting, you can set preferred stop position between them as the half open position.

Press 1s → Press 1s → Press 1s → Preferred stop position is ok

2, Clear preferred stop position

Press 1s → Press 1s → Press 1s → Clear preferred stop position is ok

Note: In the jog mode 1, long press stop button, the curtain run directly from the current position to preferred stop position; In the jog mode 2, long press stop button, the motor will first run to the down limit position, then run to preferred stop position.

3 Fine-tuning up/down limit position

1, Fine-tuning the up limit position Up+Stop → Up/Down → Up+Stop

Press 5s → Press 1s → Press 2s → The new up limit is ok

2, Fine-tuning the down limit position Down+Stop → Up/Down → Down+Stop

Press 5s → Press 1s → Press 2s → The new down limit is ok

Note: After entering fine-tuning mode, will not delete the original preferred stop position; if no button operation within 2 minutes, 2 minutes to the limit, the motor will be prompted to turn and automatically exit the limit fine-tuning mode; After fine-tuning the up/down limit position can not be in the same position.

4 Add Emitter

Method one P2 a → P2 a → P2 b

Press 1s → Press 1s → Press 1s → Add emitter is ok

Method two P2 a → P2 a → Stop b

Press 1s → Press 1s → Press 2s → Add emitter is ok

Method three Stop b

Press 2s → loosen P1 → Press 2s → Add emitter is ok

Note: Emitter a is the one already matched code, while emitter b has not; After the success of add emitter to retain all the settings of the original motor.

5 Delete one emitter

Method one P2 a → P2 a → P2 b

Press 1s → Press 1s → Press 1s → Delete one emitter is ok

Method two P2 a → P2 a → Stop b

Press 1s → Press 1s → Press 2s → Delete one emitter is ok

Method three Stop b

Press 2s → loosen P1 → Press 2s → Delete one emitter is ok

Note: a b are all of the code emitters, this method only can delete the emitter b not the emitter a; After the success of delete emitter to retain all the settings of the original motor (The limit is reserved for previous settings).

6 Speed Regulation

P2 → Up/Down → Up/Down

Press 1s → Press 1s → Press 1s → The motor running speed is improved / The motor running speed is reduced

Note: If motor without run for hint, indicating that the motor has reached the maximum or minimum value, factory default for maximum speed.

P1 BUTTON OPERATION

1. Short press function

Short press P1

Note: this operation should be carried out in case of limit.

2, Setting up or add emitter or delete one emitter

Press 2s → Loosen P1 → Enter setting up state. Repeat setting up operation

Note: If in the factory mode, enter the setting up state; If in user mode, enter add emitter or delete one emitter status.

3, Motor entry shielding mode

Press 6s → Loosen P1 → Motor entry shielding mode

Note: Motor into the shield mode, save the previous function settings and transmitter code, turn off the wireless receive function (short press P1 can be restored)

4, Switch direction

Press 10s → Loosen P1 → Successful change the direction

Note: After the success of the reversing, retain all motor original settings.

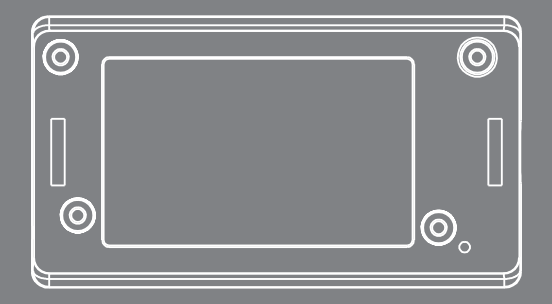
5, Reset to factor mode

Press 14s → Loosen P1 → Reset to factor mode successfully

Note: After the Reset to factor mode, will delete all previous system function setting and the emitter code.

FAULT AND SOLUTION

PHENOMENON	REASON	PROCESSING METHOD
The motor is not running	a, he emitter is not matched. b, If press P1 button for a long time while with no reaction. May be the power is short-circuit or the circuit board or the motor is broken.	a, Setting up the match code b, Contact after-sales service



(A-00)

MT01-4001-069001