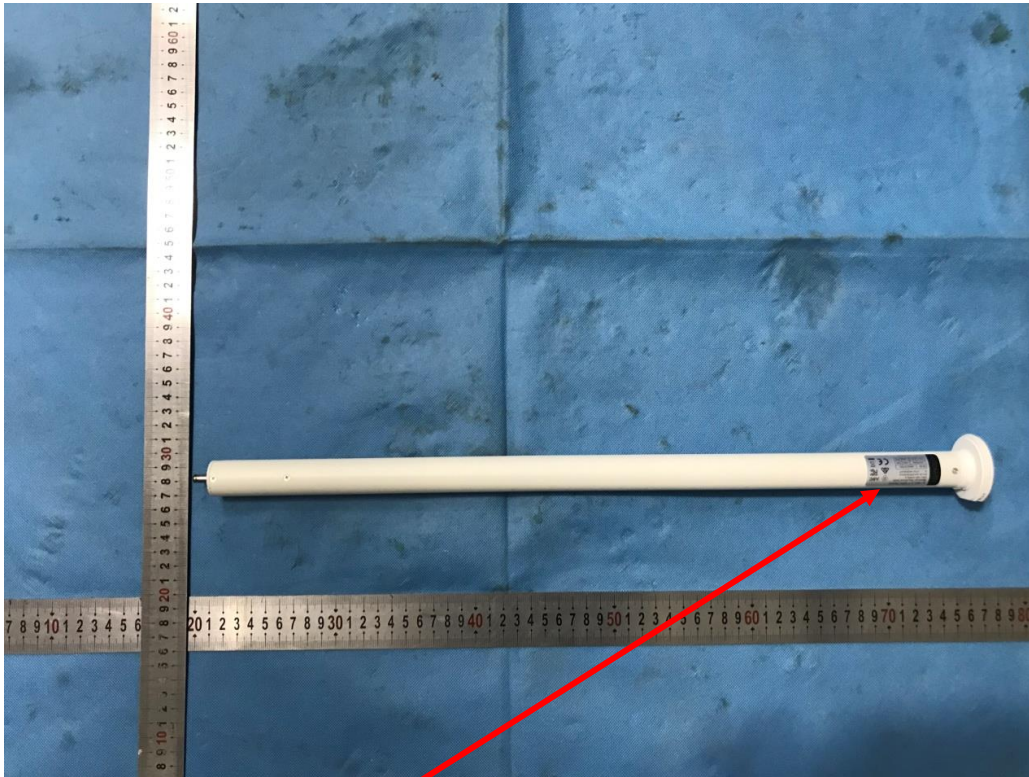


Label & Location



Label position

Label

AUTOMATE™

Li-ion 1.1 ARC Motor
[Ø25/1.1Nm/28rpm (Skyline)]

MT01-1325-069015-A
FCC ID: 2AGGZ003B9ACA3C
IC: 21769-003B9ACA3C

5V DC	2.2Ah	MADE IN PRC	
433.92MHz		0.83A	10W
I.C.L.A	12min	0.43kg	IP20

CAN ICES-3 (B)/NMB-3(B)

III ARC
FC
CE

AUTOMATE™

Li-ion 1.1 ARC Motor

[Ø25mm/1.1Nm/20rpm (S45)]
MT01-1325-069003-A
FCC ID: 2AGGZ003B9ACA3C
IC: 21769-003B9ACA3C

5V DC	MADE IN PRC		
433.92MHz	0.83A	10W	
I.C.L.A	12min	0.43kg	IP20

CAN ICES-3 (B)/NMB-3(B)



AUTOMATE™

Li-ion 1.1Nm ARC Motor

[Ø25mm/1.1Nm/20rpm (Skyline-Short)]
MT01-1325-069001-A
FCC ID: 2AGGZ003B9ACA3C
IC: 21769-003B9ACA3C

5V DC	2.6Ah	MADE IN PRC	
433.92MHz	0.83A	10W	
I.C.L.A	12min	0.43kg	IP20

CAN ICES-3 (B)/NMB-3(B)



AUTOMATE™

Li-ion 1.1 ARC Motor

[Ø25mm/1.1Nm/20rpm (Skyline)]
MT01-1325-069002-A
FCC ID: 2AGGZ003B9ACA3C
IC: 21769-003B9ACA3C

5V DC	2.6Ah	MADE IN PRC	
433.92MHz	0.83A	10W	
I.C.L.A	12min	0.43kg	IP20

CAN ICES-3 (B)/NMB-3(B)



AUTOMATE™

Li-ion 1.1 ARC Motor

[Ø25mm/1.1Nm/20rpm (S45-Short)]
MT01-1325-069005-A
FCC ID: 2AGGZ003B9ACA3C
IC: 21769-003B9ACA3C

5V DC	2.6Ah	MADE IN PRC	
433.92MHz	0.83A	10W	
I.C.L.A	12min	0.43kg	IP20

CAN ICES-3 (B)/NMB-3(B)

