



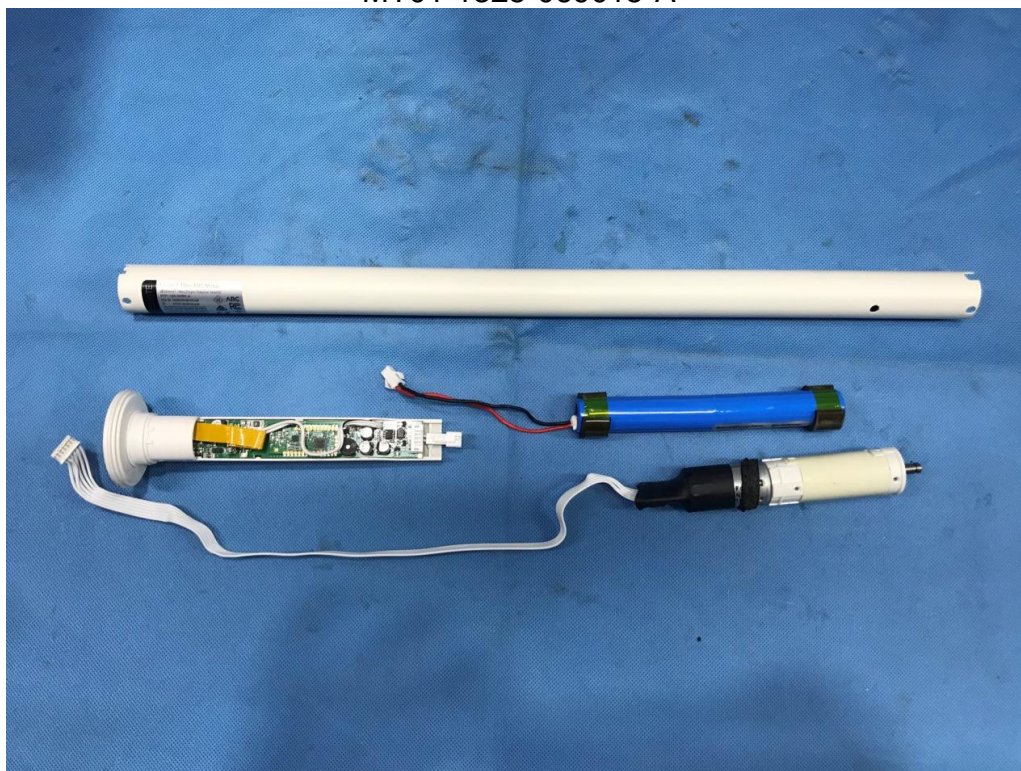
China

# Internal Photos Documentation

Manufacturer: Rollease Acmeda Inc  
Product: Li-ion 1.1 ARC Motor  
FCC ID: 2AGGZ003B9ACA3C  
IC: 21769-003B9ACA3C

Page 1 of 8

MT01-1325-069015-A







China

# Internal Photos Documentation

Manufacturer: Rollease Acmeda Inc  
Product: Li-ion 1.1 ARC Motor  
FCC ID: 2AGGZ003B9ACA3C  
IC: 21769-003B9ACA3C







China

# Internal Photos Documentation

Manufacturer: Rollease Acmeda Inc  
Product: Li-ion 1.1 ARC Motor  
FCC ID: 2AGGZ003B9ACA3C  
IC: 21769-003B9ACA3C

Page 3 of 8





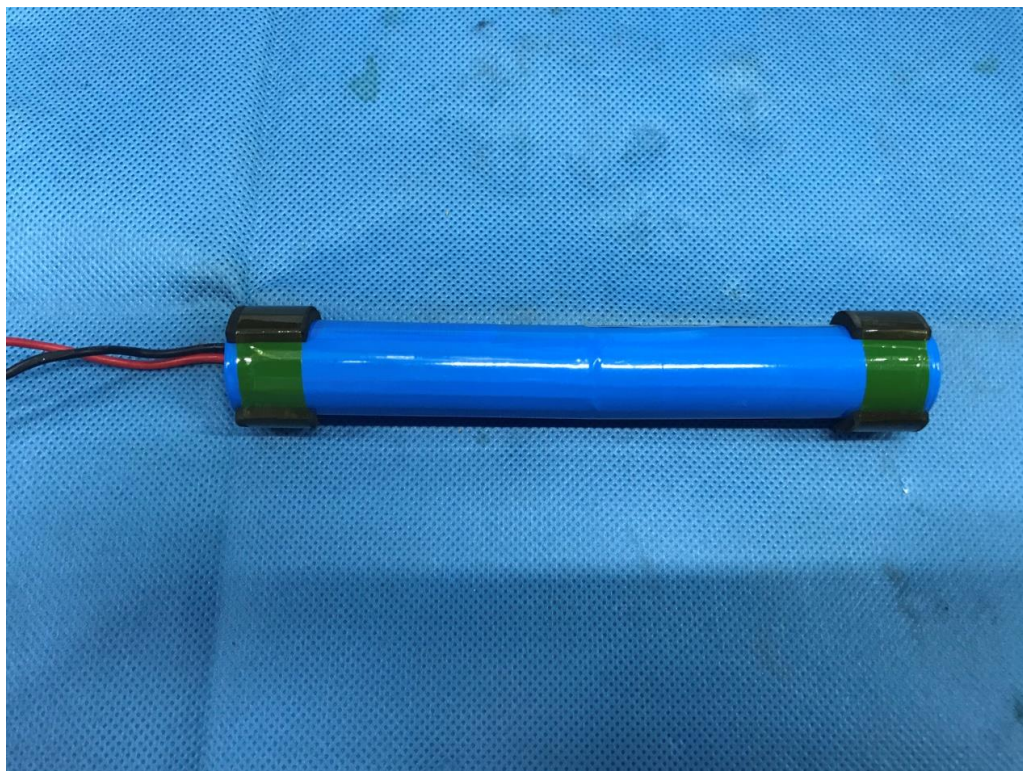


China

# Internal Photos Documentation

Manufacturer: Rollease Acmeda Inc  
Product: Li-ion 1.1 ARC Motor  
FCC ID: 2AGGZ003B9ACA3C  
IC: 21769-003B9ACA3C

Page 4 of 8







China

# Internal Photos Documentation

Manufacturer: Rollease Acmeda Inc  
Product: Li-ion 1.1 ARC Motor  
FCC ID: 2AGGZ003B9ACA3C  
IC: 21769-003B9ACA3C

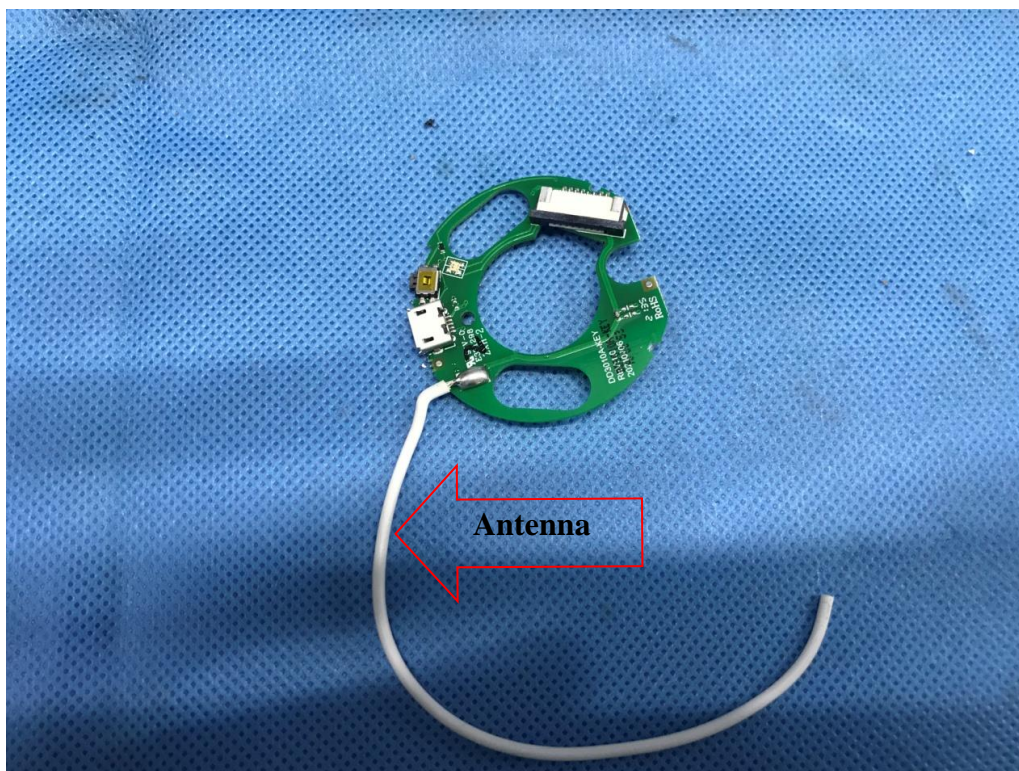
Page 5 of 8





# Internal Photos Documentation

Manufacturer: Rollease Acmeda Inc  
Product: Li-ion 1.1 ARC Motor  
FCC ID: 2AGGZ003B9ACA3C  
IC: 21769-003B9ACA3C



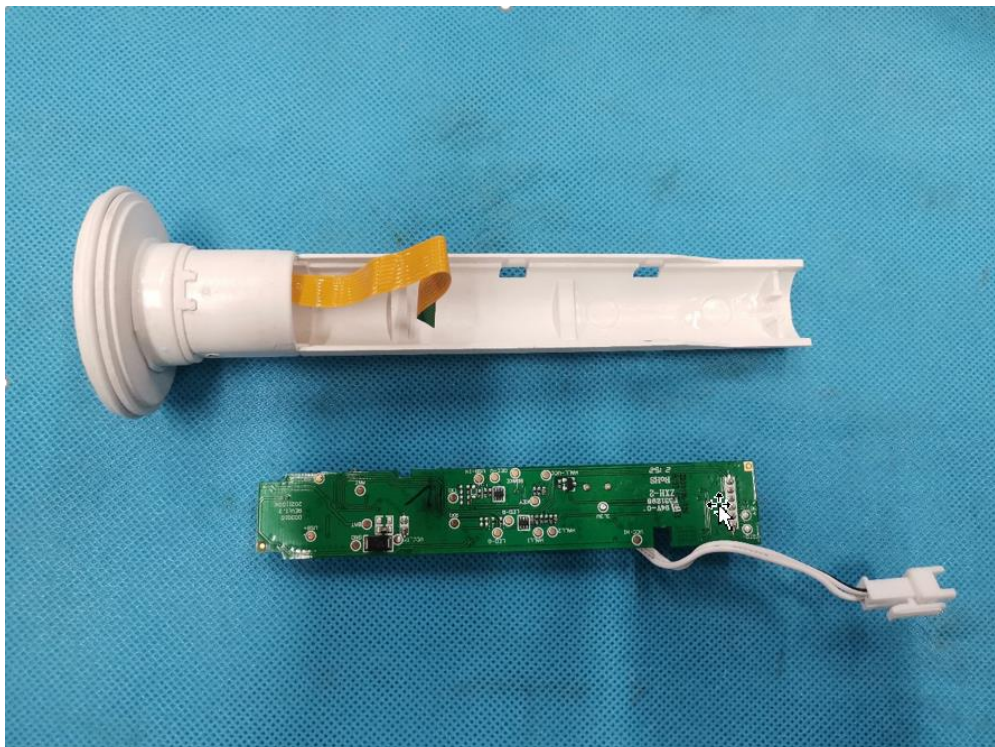
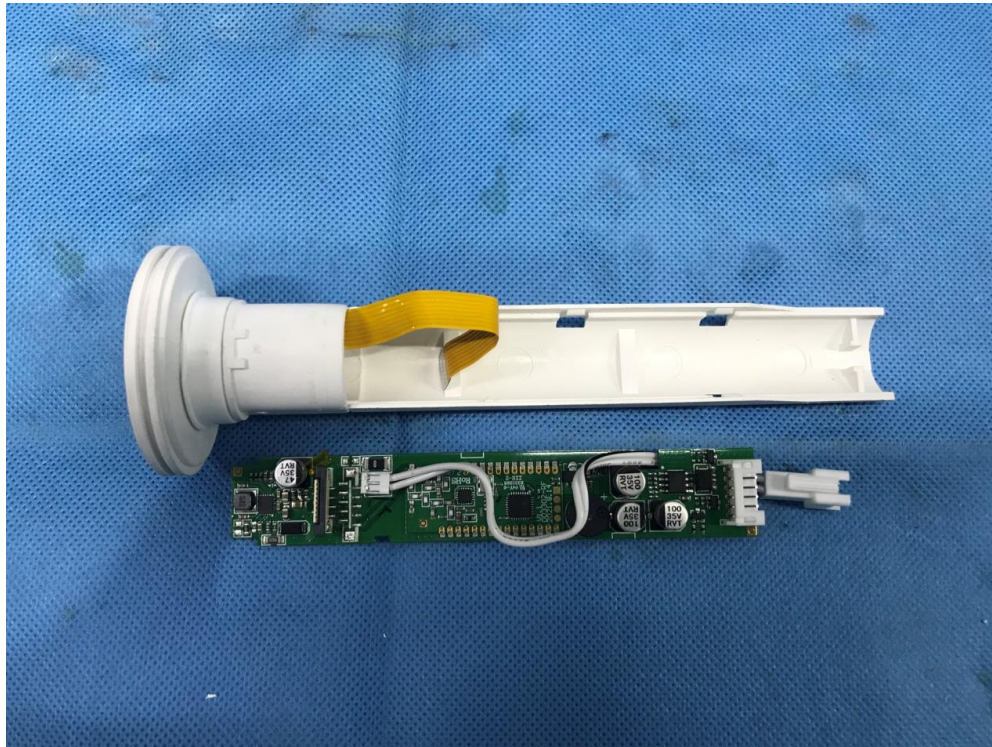




China

# Internal Photos Documentation

Manufacturer: Rollease Acmeda Inc  
Product: Li-ion 1.1 ARC Motor  
FCC ID: 2AGGZ003B9ACA3C  
IC: 21769-003B9ACA3C







China

# Internal Photos Documentation

Manufacturer: Rollease Acmeda Inc

Product: Li-ion 1.1 ARC Motor

FCC ID: 2AGGZ003B9ACA3C

IC: 21769-003B9ACA3C

