

THALES AVIONICS INC.  
CABIN WIRELESS ACCESS POINT (CWAP)  
PNO 186140-102 REV C  
MFR 0LWJ2  
SER LT170007 DMF 20170209  
5.5LB (2.5 KG) 115VAC 25W 1.0A  
MADE IN USA

ADDITIONAL INFO:  
SUPPLIER CASE 3D3R PNO LV10-151001-101

TEST ARTICLE



CAUTION





ALL INFORMATION CONTAINED  
HEREIN IS UNCLASSIFIED EXCEPT WHERE  
SHOWN OTHERWISE  
DATE 11-17-2009 BY 60322 UCBAW/STP/STP  
AUTHORITY 50 USC 3024

TEST ARTICLE

ALL INFORMATION CONTAINED  
HEREIN IS UNCLASSIFIED EXCEPT WHERE  
SHOWN OTHERWISE  
DATE 11-17-2009 BY 60322 UCBAW/STP/STP  
AUTHORITY 50 USC 3024

WARNING  
151035

**CAUTION**  
Contains Electrostatic Sensitive Devices

MODIFICATION  
1 0 0 0 0 4 0 0 0 0 8  
0 0 0 0 0 12 0 0 0 0 16





WARNING  
FIBER OPTICS

Static Electricity Alert  
The Cable Wireless Access Point (CWAP) must be handled by authorized personnel only. Do not touch the fiber optic cables or the fiber optic connectors of the CWAP.

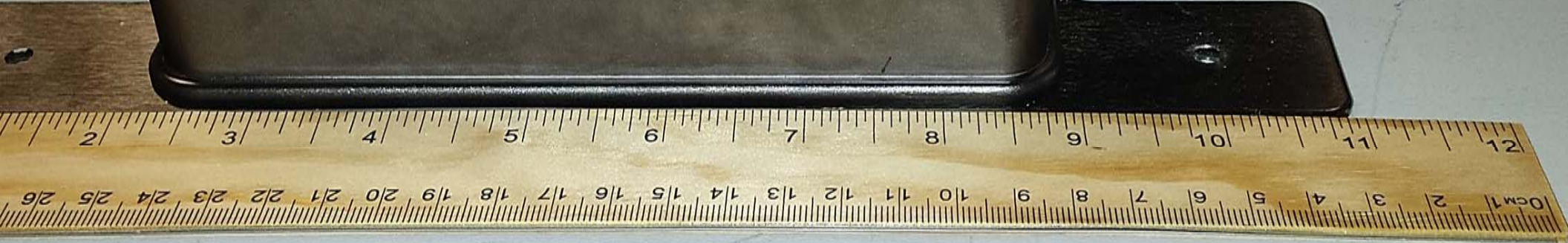


CAUTION

TEST ARTICLE

ADDITIONAL INFO  
SFP PART: CAC-5309-PHO-LV10-15-100-101

THALES ADVANCED INC.  
CABLE WIRELESS ACCESS POINT (CWAP)  
PART NO: 100-40-2020-0  
SERIAL NO: 00000000000000000000  
DATE: 2/10/2009  
5309-03-100-15-100-200-11-0A  
MADE IN USA





THALES AVIONICS INC.  
CABIN WIRELESS ACCESS POINT (CWAP)  
PNO 186140-102 REV C  
MFR 0LWJ2  
SER LT170007 DMF 20170209  
5.5LB (2.5 KG) 115VAC 25W 1.0A  
MADE IN USA

---

ADDITIONAL INFO:  
SUPPLIER CAGE 3D3R PNO LV10-151001-101

TEST ARTICLE

 CAUTION

---



---

Radio Frequency Area

The Cabin Wireless Access Point Must be Switched Off When Personnel are Within 20 cm (8 inches) of the Radio Frequency Antennas.

WARNING  
115 VOLTS



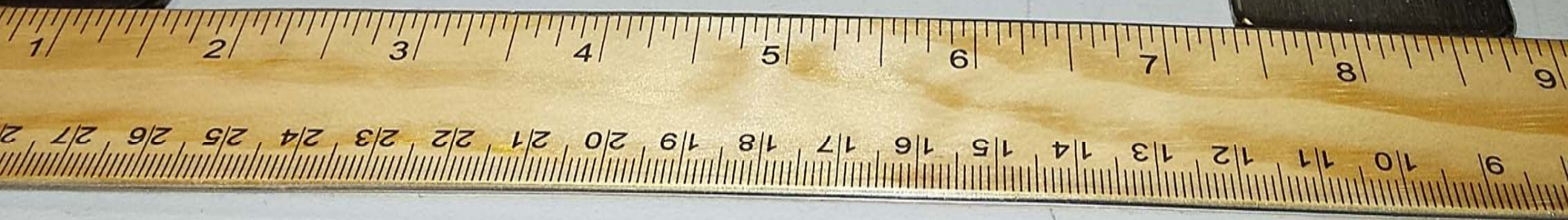


CAUTION

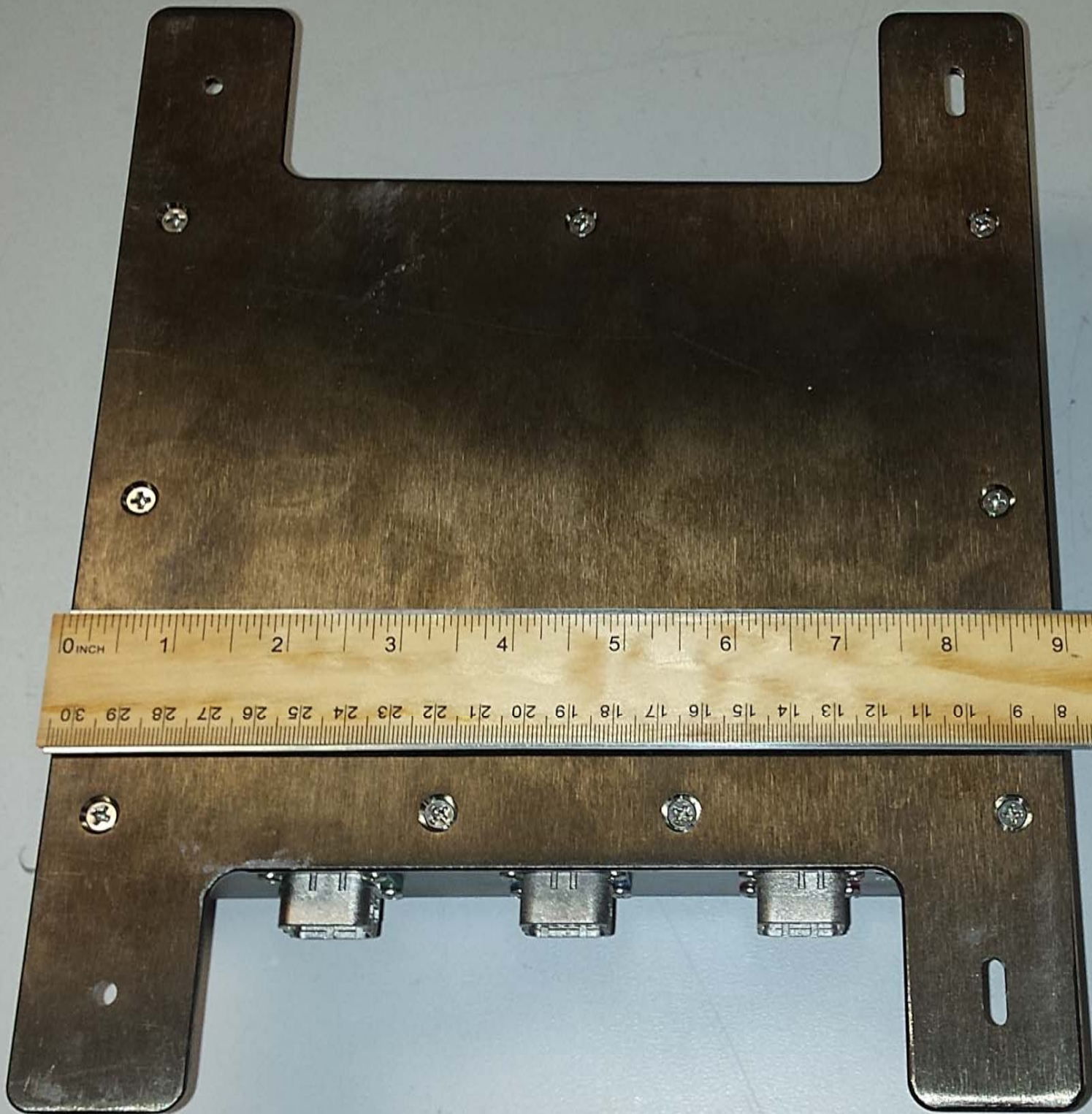
TEST ARTICLE

THALES AVIONICS INC  
CABIN WIRELESS ACCESS POINT (CWAP)  
P/N: 100140-102 REV C  
MFR: DAVI2  
SER: L117007  
DATE: 20120208  
DMF: 20120208  
5.8 (E5) NSJ 118VAC 25W 1 BA  
MADE IN USA  
ADDITIONAL INFO:  
SUPPLIER CASE 300R PNO1 V10-151001 101

 CAUTION  
HOT SURFACE









TEST ARTICLE

CAUTION  
Radio Frequency Area  
The Cabin Wireless Access  
Point Must be Switched Off  
When Personnel are Within  
20' (6.1m) of the  
Radio Frequency Antenna

WARNING  
115 VOLTS

J1

J2

J3

