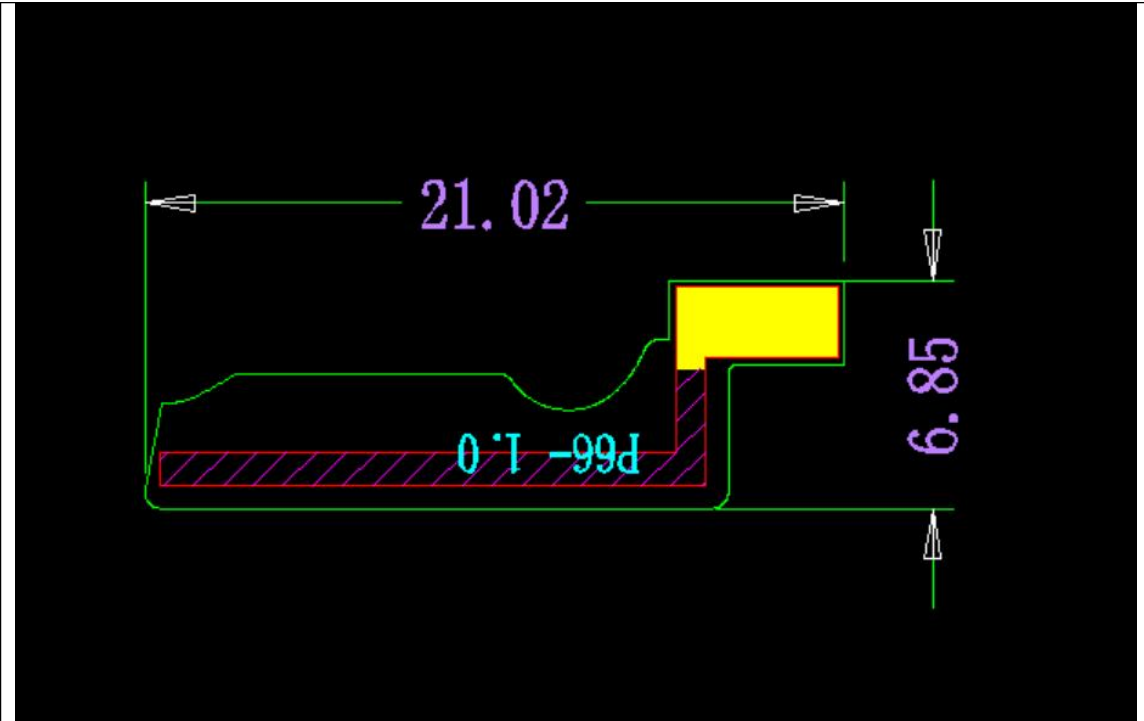


## Antenna Information

|                                |  |
|--------------------------------|--|
| Manufacturer                   | <b>Shenzhen Panlong Communication Technology Co., Ltd.</b> |
| Antenna Type                   | Onboard antenna  |
| Antenna Model                  | FPC antenna  |
| Antenna Part Number            | 3.30.P66.001   |
| Antenna Frequency Range        | 2400-2500MHz   |
| Antenna Input Power Limitation |  |
| Antenna Peak Gain              | -1.56dBi   |
| Antenna Dimension (LxHxW)      | 21.02*6.85   |

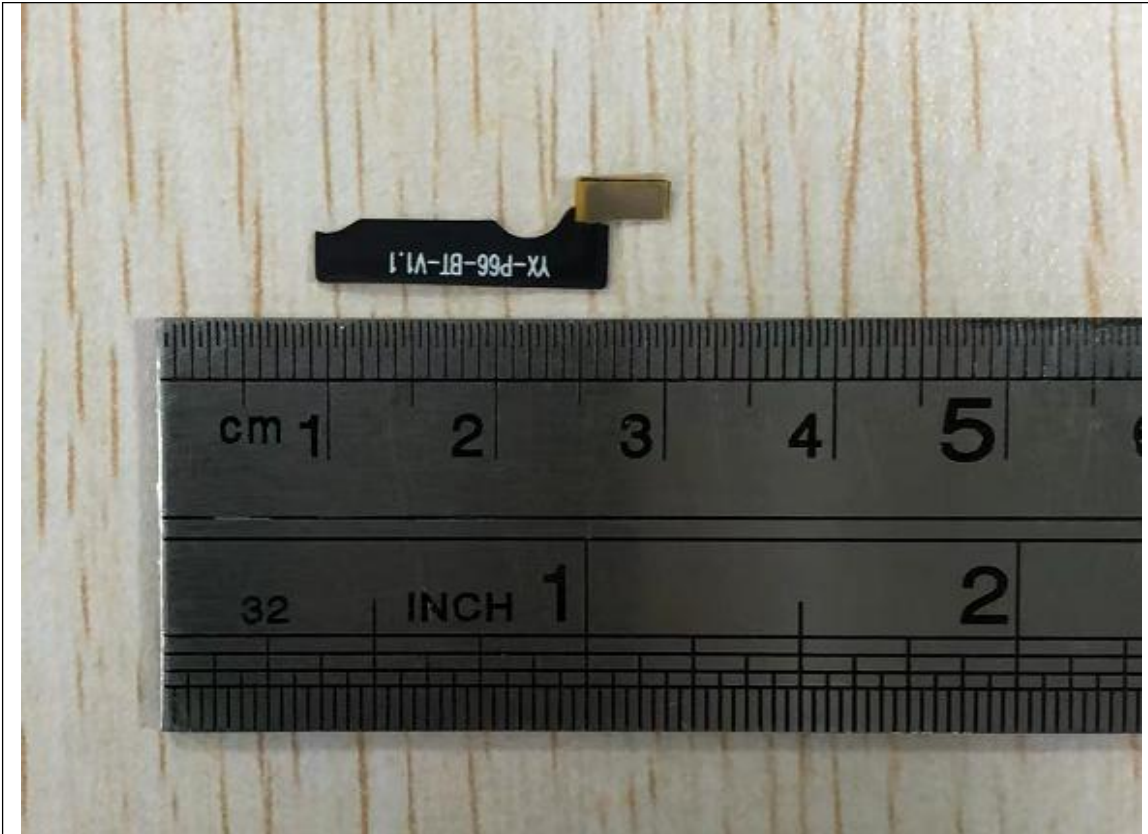
## Antenna Photo





With Ruler]

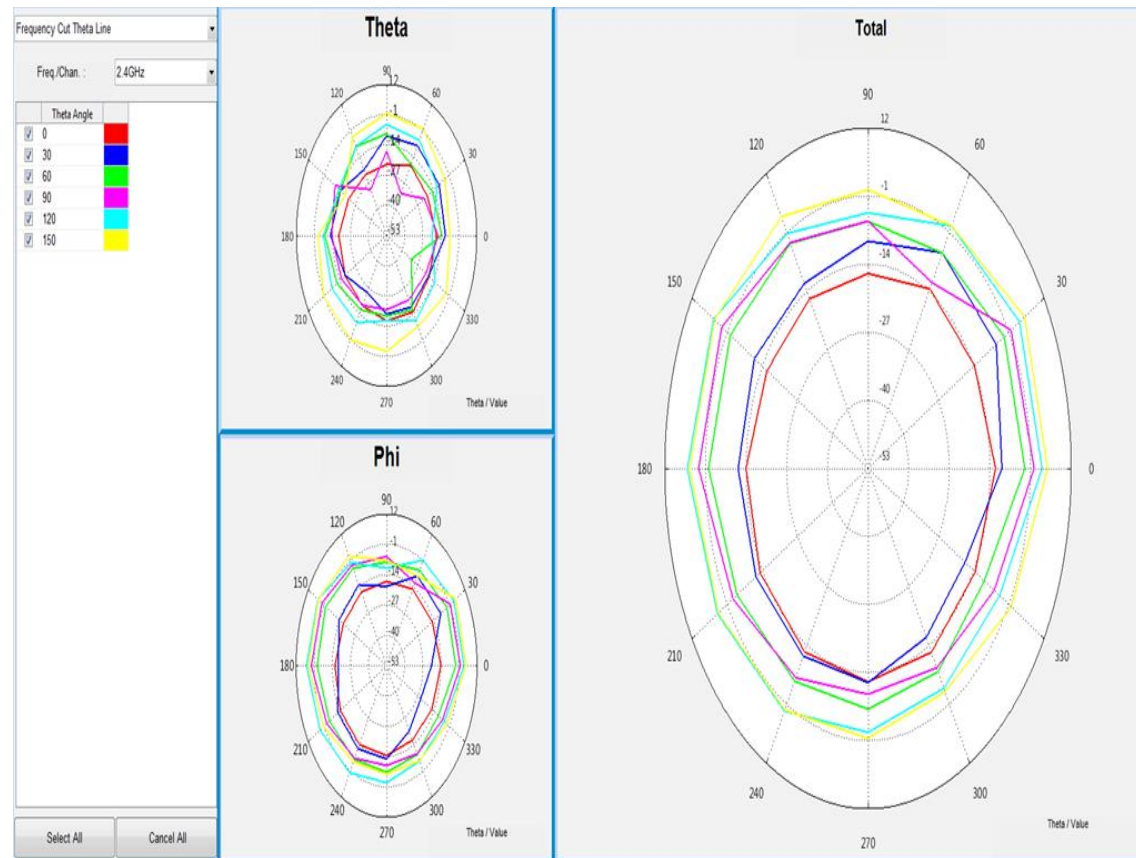




Antenna Bottom View [With Ruler]

**Antenna Pattern/Gain Measurement data/Table:**

Example:



| Frequency                 | 2.4GHz | 2.42GHz | 2.44GHz | 2.45GHz | 2.46GHz | 2.48GHz | 2.5GHz |
|---------------------------|--------|---------|---------|---------|---------|---------|--------|
| Ant. Port Inp. Pow. (dBi) | 0      | 0       | 0       | 0       | 0       | 0       |        |
| Rad. Pow. (dBi)           | -6.13  | -5.54   | -6.02   | -6.17   | -6.41   | -7.02   | -7.7   |
| Rad. Pow. 0-90 (dBi)      | -8.91  | -8.12   | -8.44   | -8.51   | -8.66   | -9.1    | -9.7   |
| Rad. Pow. 90-180 (dBi)    | -9     | -8.66   | -9.32   | -9.57   | -9.91   | -10.76  | -11.7  |
| Peak EIRP (dBi)           | -2.12  | -1.56   | -2.13   | -2.21   | -2.4    | -2.92   | -3.7   |
| Directivity (dBi)         | 4.01   | 3.98    | 3.89    | 3.96    | 4.01    | 4.1     | 4.0    |
| Efficiency (dB)           | -6.13  | -5.54   | -6.02   | -6.17   | -6.41   | -7.02   | -7.7   |
| Efficiency (%)            | 24.38  | 27.93   | 25      | 24.15   | 22.86   | 19.86   | 16.6   |
| Gain (dBi)                | -2.12  | -1.56   | -2.13   | -2.21   | -2.4    | -2.92   | -3.7   |

Antenna Pattern/Measurement data

**Shenzhen Panlong Communication Technology Co., Ltd.**