

Modulation mode: GFSK

Frequency range: 2.4GHz-2.4835GHz

Number of channels: 40

Input impedance: 50

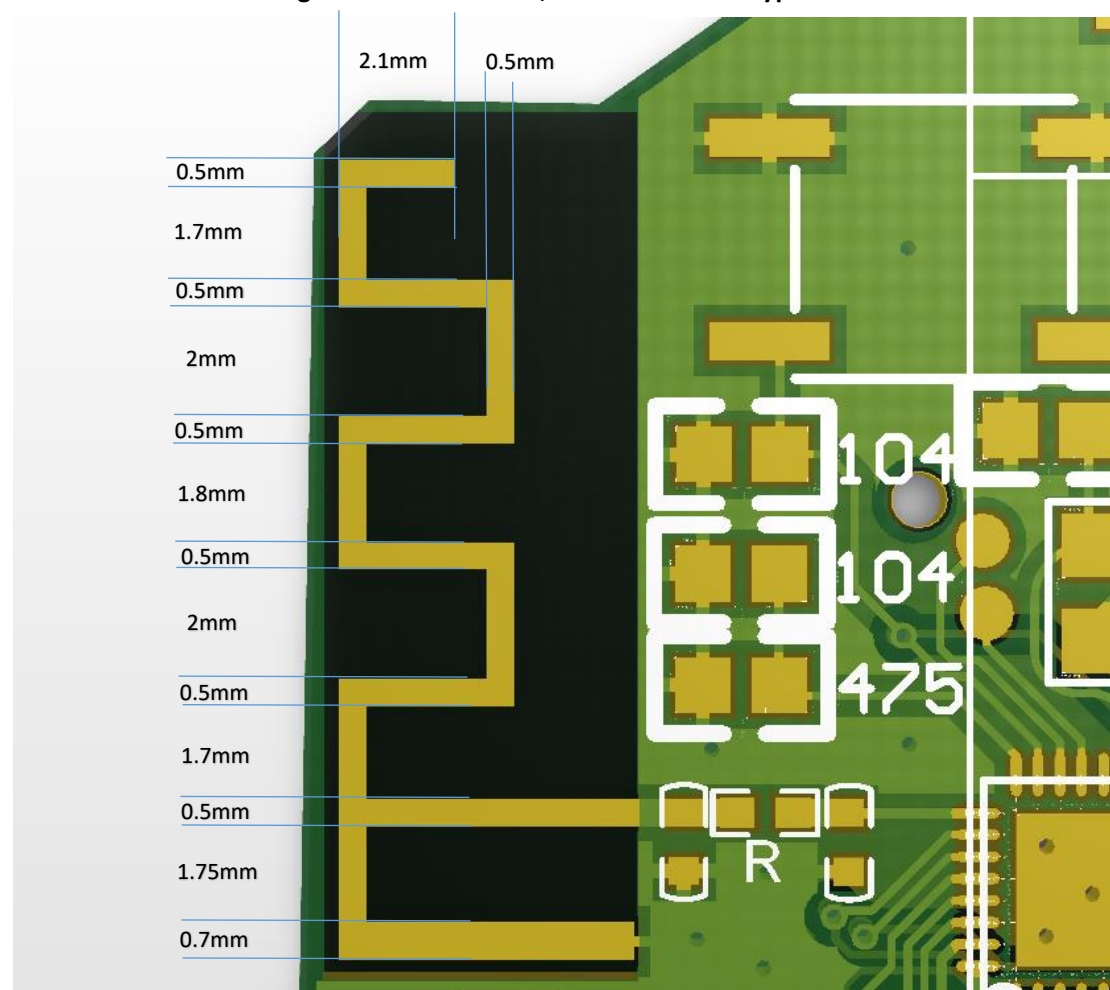
Transmit power: 0dB

RF Line loss: **Not tested**

Antenna gain: 0.89dBi

Bluetooth core version: 5.0

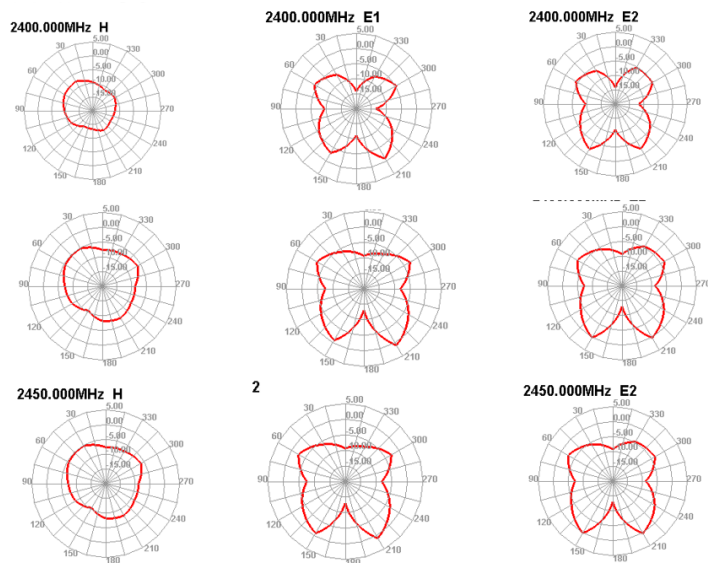
1. The antenna size diagram is shown below, and the antenna type is an onboard antenna



2. Antenna gain and efficiency diagram

Freq (MHz)	Effi (%)	Gain (dBi)
2400	1.6	0.89
2410	1.36	0.87
2420	1.77	0.86
2430	1.45	0.85
2440	1.42	0.79
2450	1.18	0.78
2460	1.63	0.77
2470	1.01	0.76
2480	1	0.69
2490	0.73	0.61
2500	1.42	0.67

3. Antenna pattern



4. Hardware and software version

software: GR4115 健康尺程序 V1.0;

hardware: GR4115 GNB V1.3;