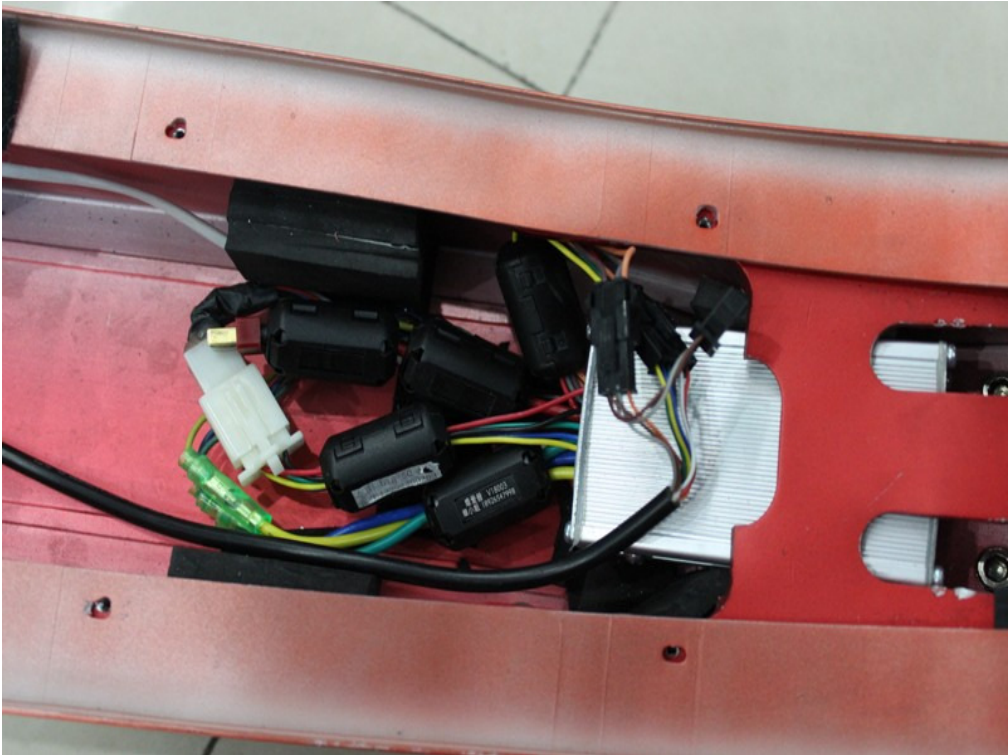
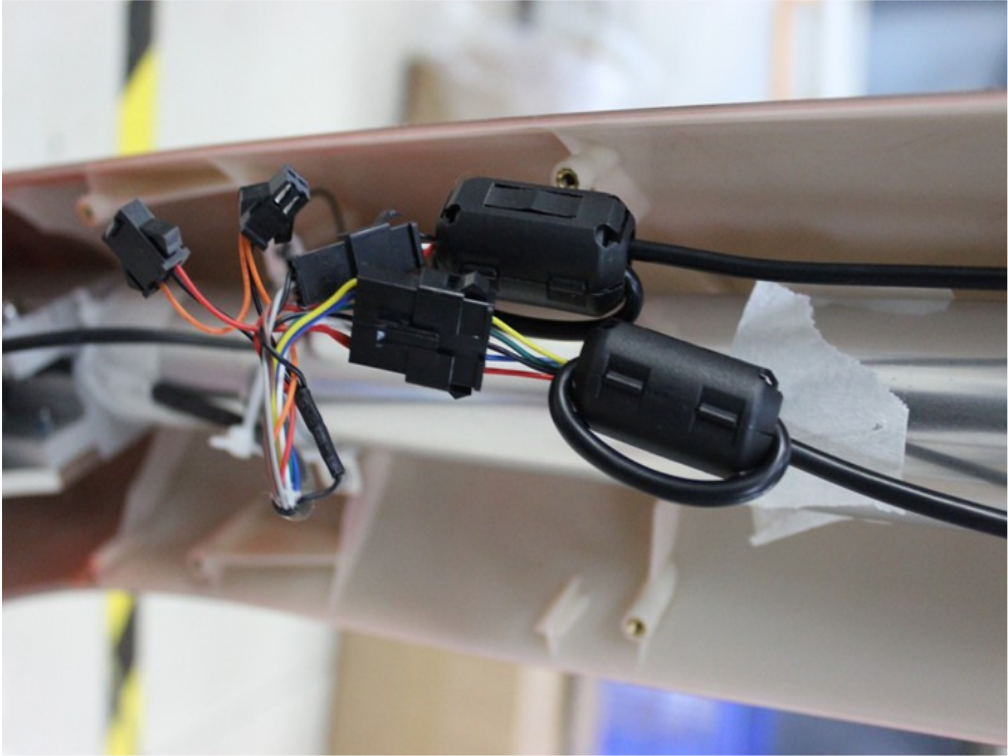
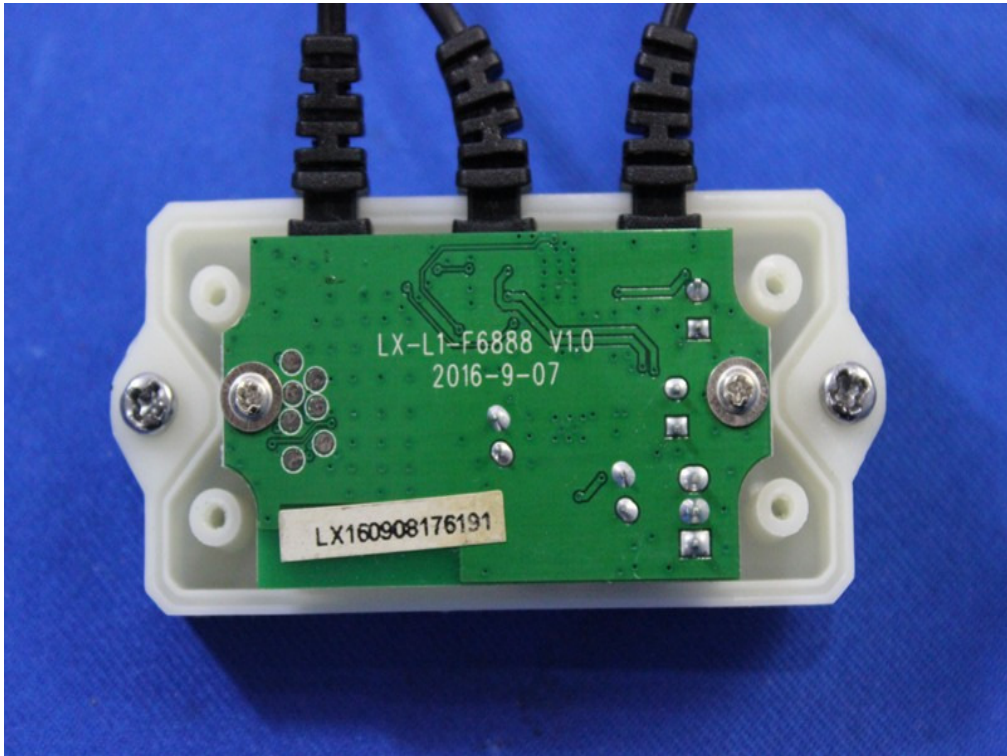
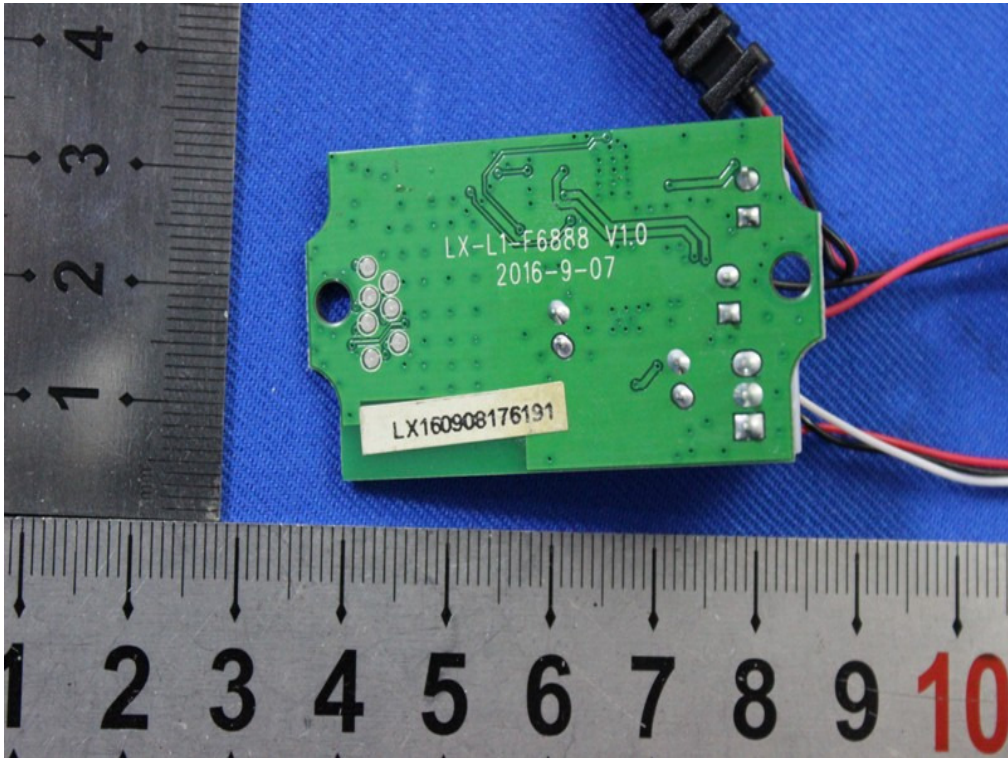
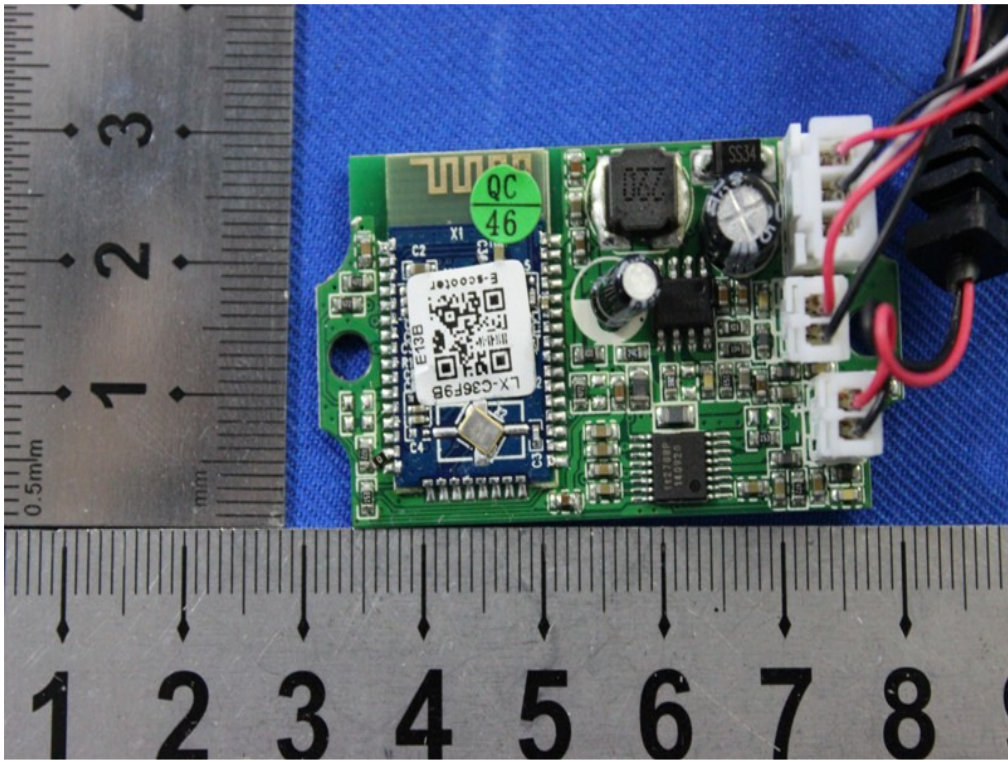


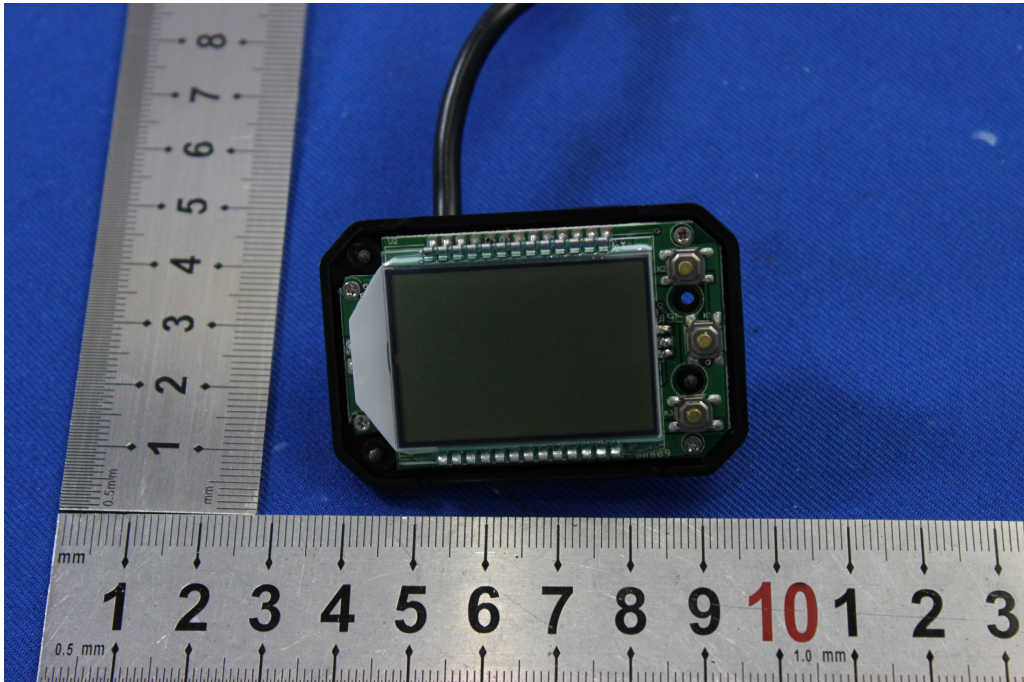
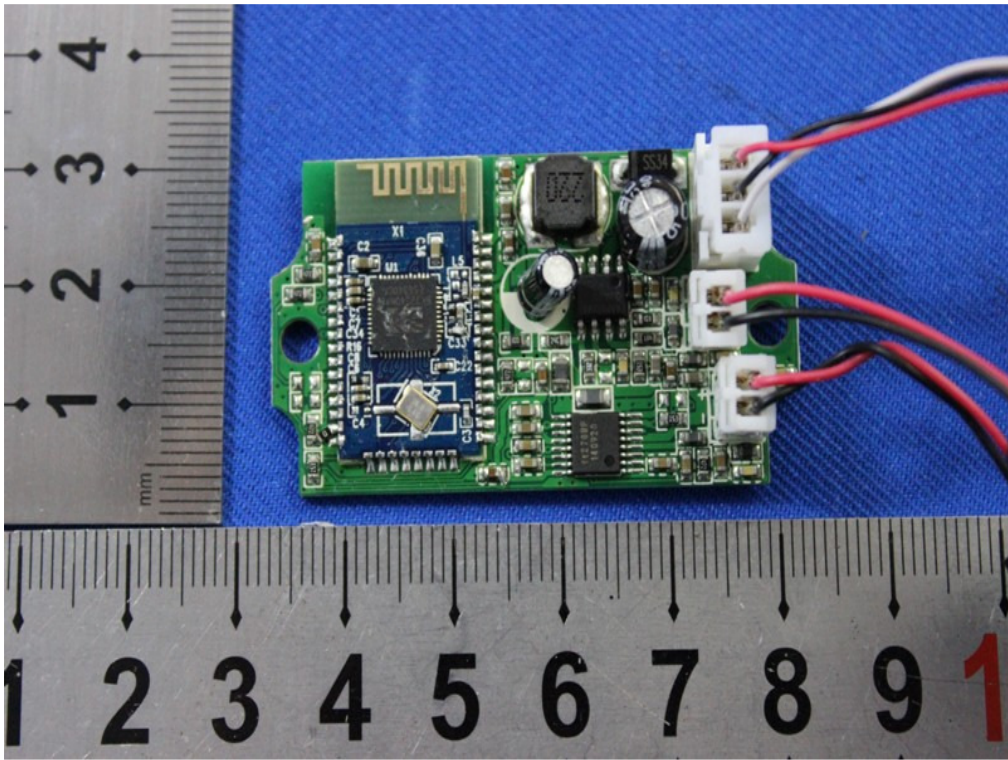
# 1 Photographs - EUT Constructional Details

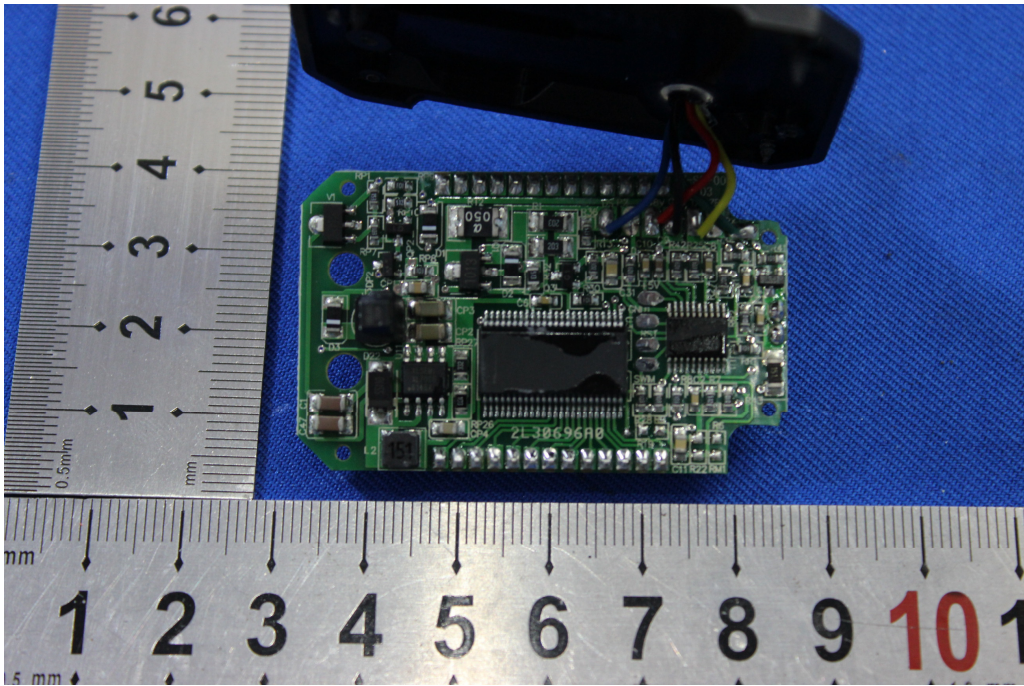
Test model No.: L1

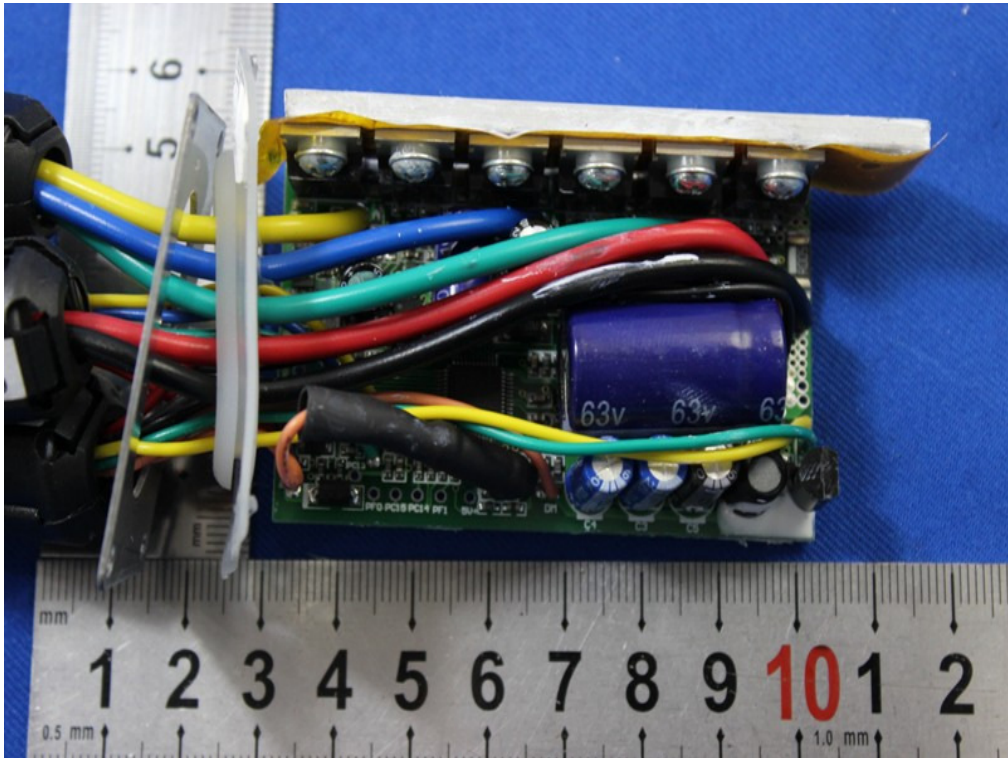
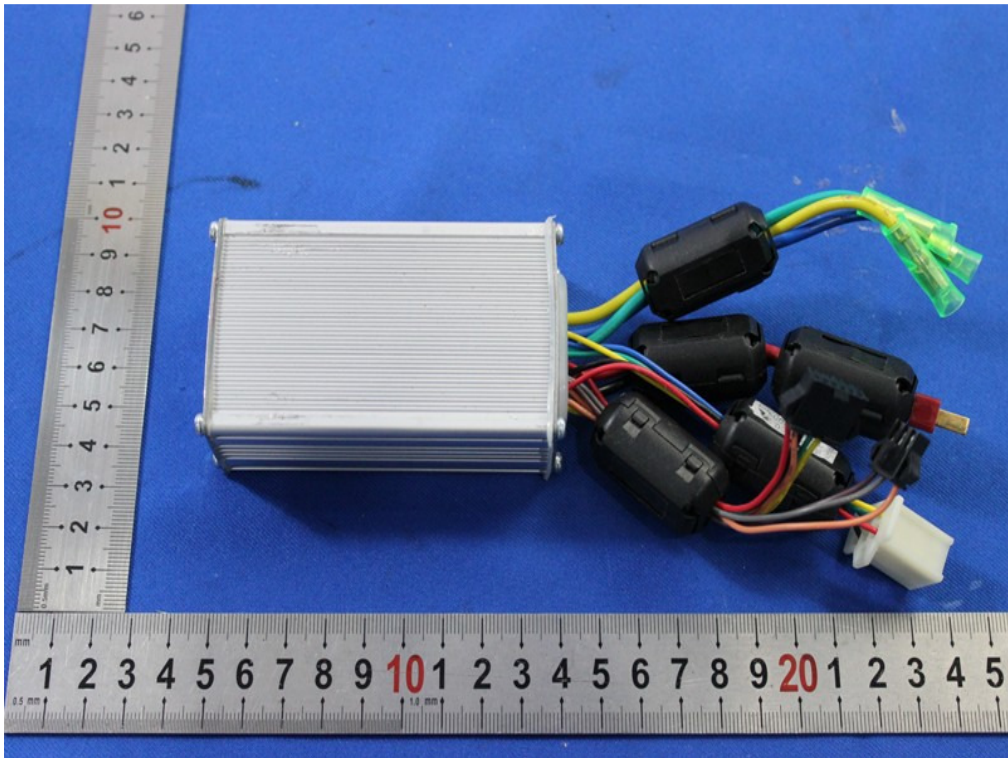


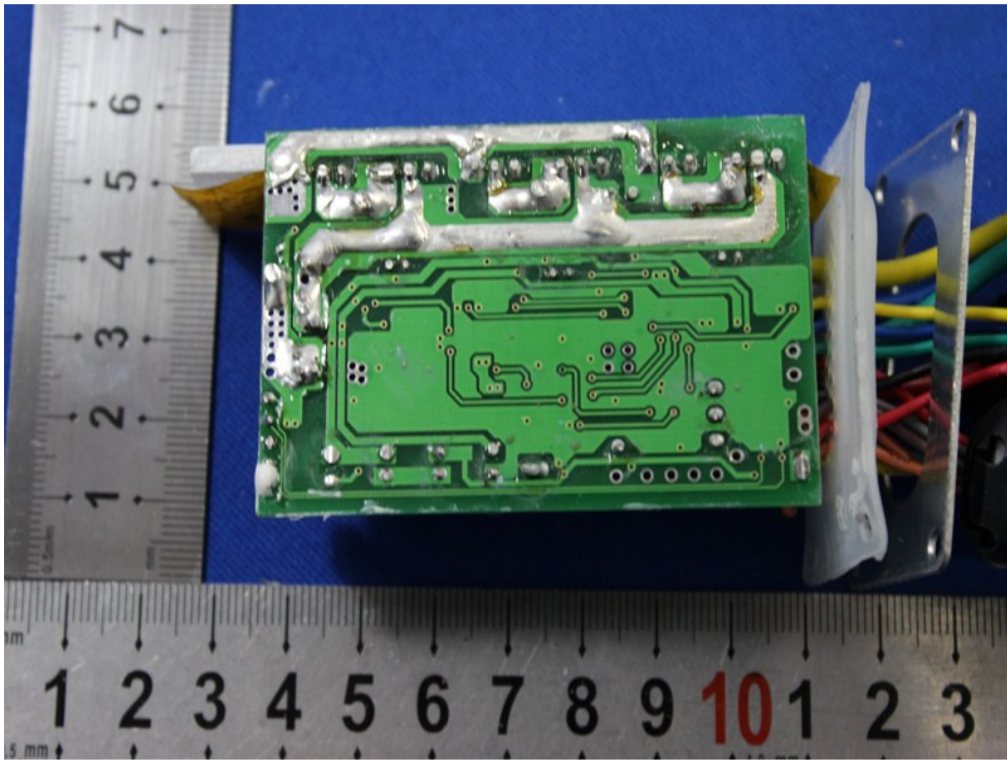












# 锂离子可充电电池组

型号: BLH-21

电压: 36V

容量: 8.7Ah

注意:

- 1: 请勿把电池丢进火里或水里.
- 2: 请勿挤压、拆卸、穿刺或短路.
- 3: 请使用指定的充电器充电.

深圳市沃尔德电子有限公司

20161013

