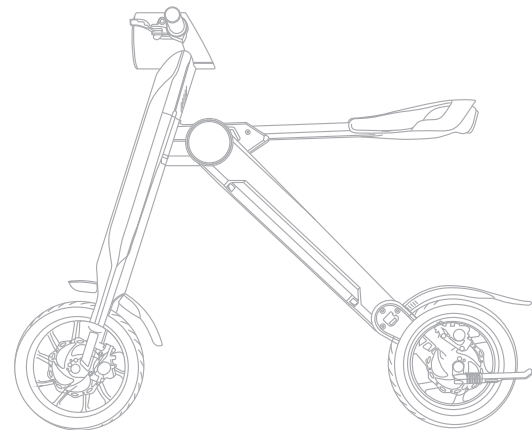


SMART SCOOTER

MANUAL

Fashionable/Portable/Intelligent



Catalogue

Part One K1 Product Introduction

1.1 Product Characteristics	P01
1.2 Product Specifications	P02

Part Two Product Operation

2.1 Intelligent digital display	P03
2.2 Product function	P04
2.3 How to use.....	P05-06
2.4 How to fold	P07-08
2.5 Intelligent alarm	P09-10
2.6 How to charge your scooter	P11
2.7 How to charge your phone	P11
2.8 Bluetooth speaker	P12
2.9 Cruise control	P12
2.10 Endurance Mileage	P12

Part Three Safe Operation

Part Four Maintenance

Part Five After-sales Service

About Manual

This manual contains important instruction for safe operation. Please take your patience to read it completely. In the package, you will find one scooter, recharger, tool kit, manual, warranty card, certificate of quality

1.1 K1 Product Introduction

K1 is the most fashionable and portable intelligent scooter for short trip. Independent K shape design, popular and bold color theme, top level technology and unique craftsmanship make K1 the perfect quality. Due to its innovative design and portability, K1 has become the first choice for office workers, students, successful people and city beauties to go for a short trip. Details determine quality. K1 provides you with considerate devices in every detail, making your trip joyful.

Product Characteristics:

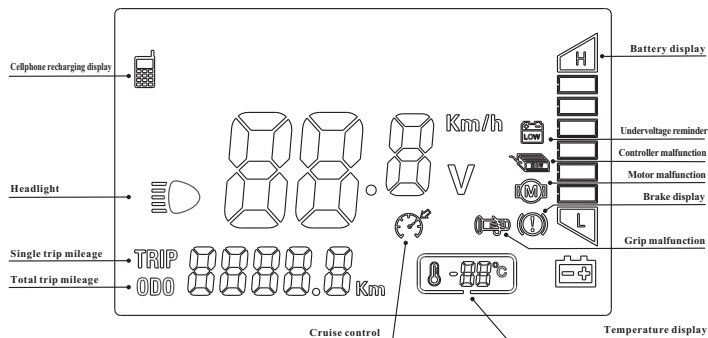
1. USB charging port:
2. Water-proof stereo bluetooth speaker
3. Super endurance ability, high performance imported SAMSUNG, LG battery
4. Cruise control system
5. LED headlight
6. Front & rear hydraulic disc brake
7. Brake to power-off protector

1.2 Product Specifications

DESCRIPTION	SPECIFICATION
Dimension before folding	1170mmX980mmX580mm
Dimension after folding	1230mmX570mmX245mm
Weight	≤18kg
Loading weight	≤120kg
Max speed	20km/h
Endurance mileage	35~45km
Charging time	3-5h
Battery capacity	8.8AH
Battery type	lithium
Nominal voltage	36v
Rated power	240w
Motor type	Brushless motor
Motor rated torque	6.6N.M
Electricity consumption for single charging round	0.3 degree
Overcurrent protection	13A±1A
Controller under-voltage protection	30±1V
Controller power tube number	6tubes

Part Two Product Operation

2.1 Intelligent digital display



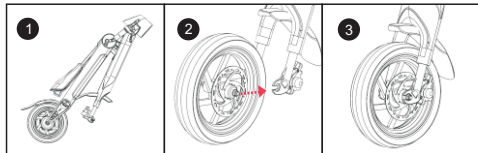
2.2 Product function

1. Foldable handle bar: innovative clip foldable design, increasing space efficiency.
2. Big LED headlight: effectively increase brightness, improving visibility.
3. Brake to power-off: once activating each brake will end power supply to ensure braking safety.
4. LED display: showing speed, mileage, temperature and etc.
5. Grip: eco-friendly grip, comfortable to handle
6. Genuine leather seat: more comfortable and healthy
7. Rear reflector: guarantee your safety during night driving.
8. Imported SAMSUNG, LG battery: fast recharging, environment friendly, super long endurance ability.
9. Foldable clip: strictly control standard, solid and durable
10. Power switch
11. Taiwan Kenda tyre: automobile standard tyre, top-level anti-friction material, safe and anti-explosion.
12. Fender: front and rear protection, prevent dirt to splash on scooter or user.
13. Foldable foot pedal: compliance with ergonomics, comfortable and convenient.
14. Front & rear hydraulic disc brake: the safest disc brake system
15. Side stand: same material as the body part, strong support.
16. German brushless motor: strong power, environment friendly, low-consumption of power
17. Remote control key: your scooter lock, mini and easy to carry

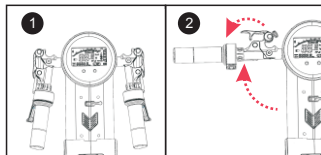


2.3 How to use

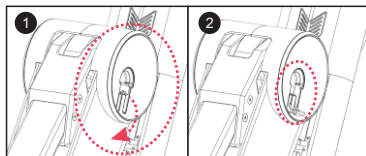
1. Open the package, please use the tool kit to install the front tyre as shown in the picture.



2. Follow the steps to open the handle bar as shown in the picture.



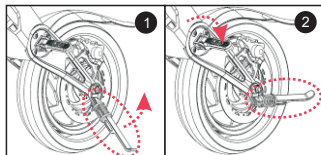
3. Unfold the bar, and stretch the scooter as shown in the picture.



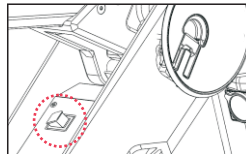
Pull as the arrow direction shows

Open the switch

4. Unfold the foot pedal and side stand as shown in the picture



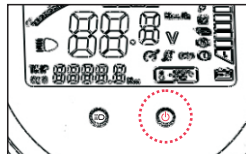
5. Switch the battery box to "ON" as shown in the picture



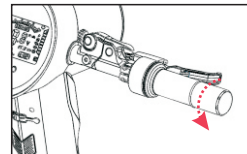
6. Use remote control key to unlock, start the power

Steps: + + Press the "unlock" button once, then press "power" button twice

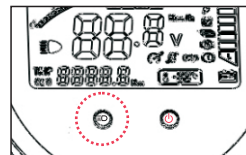
7. Press the "power" button for 2 seconds to power-on as shown in the picture.



8. Slowly rotate the right grip, then scooter starts to move as shown in the picture



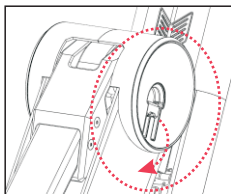
9. Press the left light, starting the night light function as shown in the picture



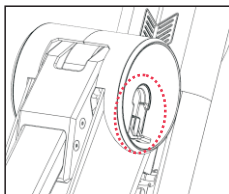
2.4 How to fold

Fold

1. Open the folding switch first as shown in the picture

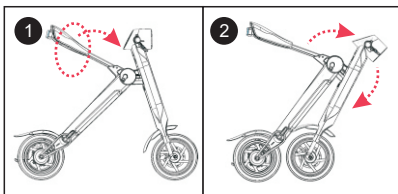


Pull as the arrow direction shows



Open the switch

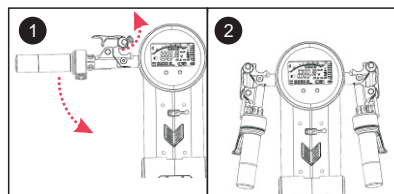
2. Lift the seat bar, and the front wheel will fold naturally as shown in the picture



3. Press the seat bar into the frame slot. When you hear a click sound, folding is completed as shown in the picture.



4. Open the handle bar switch, move it out from arc clip, and press the handle bar downward.





5. Entire scooter folding completed.





2.5 Smart Alarm


2.5.1 How To Set Burglar Alarm

Stop the scooter, then press the key  , that's ok with the sound of speaker. The speaker will be shouting 15 seconds continually when the cycle being started or touched. To cancel the alarm ,please press the key .


2.5.2 How To Cancel The Alarm

To cancel the alarm by pressing the key  ,that's done when hearing the speaker. The scooter will get power off at the moment of pressing the key  when starting the remote control.

2.5.3 How to Start the Remote Control

Double click the key  , after hearing a sound of speaker, which means the lock is open now.


2.5.4 How to Find the Position of the scooter

Press the key  with the alarm working, then the speaker will make a sound to tell you where is the scooter being parked. And it stops by pressing anykey.



2.5.5 How to set the Alarm Prompt

The system will make a sound to remind you about setting the burglar alarm if you forget doing it after the scooter parked 5 seconds.

2.5.6 How to Adjust the Sensitivity

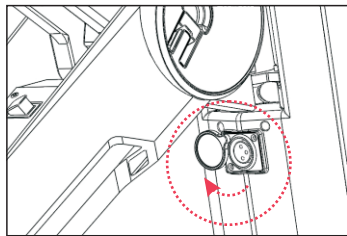
Stop the scooter and press the key  till hearing continuous short rings. The alarm rings to hang a delegate the first grade sensitivity(the top), and the alarm rings twice hang a delegate the second grade There are 4 grades in all and the 4th one is the lowest.

2.5.7 How to Start the Guard Against Robbery

Once suffered a robbery when driving, just long press the key  in the range of remote working distance, the power will be off and the scooter are going to stop automatically. To start the scooter again, just press the key  as well.

2.6 The Way of Recharging

1. The red indicating light will be shining after getting the power on.



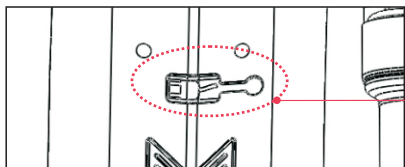
Towards the arrows turning the battery dustproof cover by 90 degree to show the charge port

Remark: please use the exclusive charger of our company.

2. Standard charging time :3-5 hours with environment temperature around 25 degree.
3. Our charger has the protector of overcurrent and the charging current should be less than 3A. Heavy current is definitely to damage the protector or shorten the battery lifespan.

2.7 Charging port for phone & Ipad

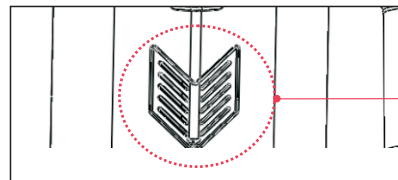
Our scooter has a charging port for phone & Ipad for urgent need when being outside.



The position of phone charging port

2.8 Bluetooth Speaker


The bluetooth speaker can be connected by Iphone & Android system cell (only once for 1 set of cell).The working range is 0-8m, but within 5m is the best.




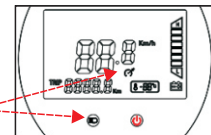
The position of bluetooth speaker

2.9 How to Set the cruise control.

1. It means to keep the scooter moving at constant speed but no need to always turn the grip by hand.How to start it: just need to long press the light key during driving. How to stop it: adjust the speed grip and mediate the power brake at the same time or long press the light key again.

- 2.The way of starting: Long press the headlight key  during the period of accelerate driving.

It has been done when you see the sign of 



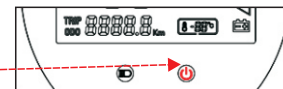
The way of stopping: close the system or make a brake.

2.10 How to Check the Endurance Mileage

ODO(Odometer) will be recorded at the moment of suffering power-off, but the single mileage won't be done.

To check the odometer, please press

the key  shortly.



Part three: Safety Usage

Each scooter will have potential danger, so please kindly read the below instruction

3.1 Very important (Situation)

1. Don't overspeed on declivity. Don't use front brake during high speed to avoid weight forward and run a risk
2. Don't drive on rainy days
3. Don't drive in deep water
4. Don't use non - our - company authorized chargers and fittings. It's not guaranteed by our company for the danger happened in this situation.
5. Don't dismantle or remake the scooter. Our company will not handle the expense caused by it and you may lose our guarantee promise. Please contact local agency or appointed maintenance center for help.

3.2 Attention for charging

1. Put it in safety place where children is not reached when charging.
2. Make full charge when you use it the first time
3. Don't use other brand's charger for this scooter. Other brand's battery should not use this charger.
4. The charger has high-voltage circuit, don't dismounting arbitrarily
5. Avoiding liquid and metal bead infiltrate inside the charger when using and storage. Avoiding drop and crash to prevent damage.
6. Don't put anything above when charging.
7. The charger should be used in dry and ventilative indoor environment.
8. Stop charging when it has bad smell or high temperature. And send it to agency for repair.

3.3 Attention for battery

1. The battery is forbidden to close fire and avoid flammable and combustible corrosivity gas
2. Don't dismounting the battery arbitrarily avoiding the inner parts damage. Don't lay waste the label on battery to avoid losing promised guarantee. Don't use other brand's charger and other brand's battery is forbidden for this charger.

Part four Maintaining

The maintaining determine the life of scooter, hope you know below maintaining details well

4.1 Basic maintaining

1. Pls check the gas pressure is achieved to 280kpa.
2. If K1 will not be used for long time, make the lithium battery full charge. Fully charge and discharge every two months.
3. Make the good habit to keep charge everyday. Charging intime before allowed minimum gas pressure to make sure battery's life.

4.2 Regular maintain self-checking

1. Check screws of front and back wheels are locked.
2. Check the patern of tyre casing if abraded or dehisced. And chck the drive system is smooth
3. Check the connector is normal. Check the brake lack is lubrication.

4.3 Cleaning Maintain

1. Forbid washing by high pressure water gun to avoid damage of inner parts and circuitry.
2. Using neutral cleaner and rag to wash the stain on surface of lacquer or plastic parts. Then clean by dry clean cloth.

Part Five after-sale service

5.1 Rules of warranty

(Company is only responsible for Lche certified battery)

No.	Description	Warranty period	Specification
1	Motor of back wheel	12 months	It can be changed a new one within 12 months3 months turnover period. Maintaining service is avaiable with 15~36 months
2	Battery	12 months	It can be changed a new one decay 12 more than 50%(artificial damage is exception).Maintaining service is avaiable with 7~12 months
3	Frame	24 months	It can be changed when out of track due to weld lost broken,angulation. Modification and man-made damage is an exception
4	Frame of front wheel	12 months	It can be changed a new one when flaw,burst is serious damageNot changing if damage is factitious.
5	Cushion	6 months	It can be changed when leather is ageing. angulation base board broken,Man made is an exception.
6	Controlor Charger	12 months	It can be changed when function is damaged and can't be repaired
7	Big light Alertor	6 months	It can be changed when function is damaged and can't be repaired
8	Front fork(including shocking proofand back fork	12 months	It can be changed when out of track due to weld lost,brokenangulation. Modification and man-made damage is an exception
9	Meter	12 months	if performance failure happened and can not be repaired,we could be replaced.

5.2 warranty card

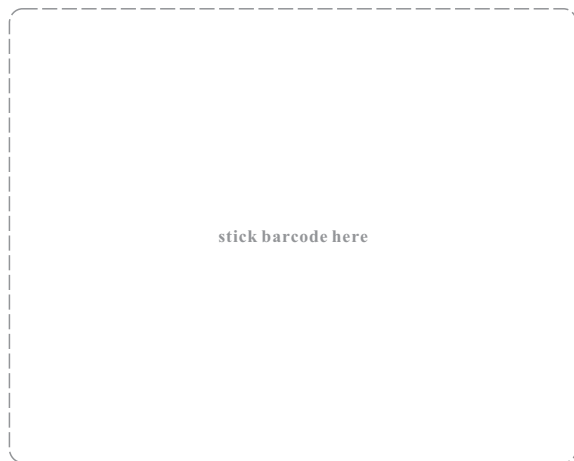
Client's name : _____ Cell phone number : _____

Address : _____

Distributor : _____ Operator : _____

Purchase date : _____ Quality inspection number : _____

Kindly remind : in order to provide good after-sales service,below carton barcode can not be torn up or altered,or else,we will not provide maintenance service.



Description of damage	Details of repairing	Technician	Date

FCC

Caution: The user is cautioned that changes or modifications not expressly approved by the party responsible for compliance could void the user's authority to operate the equipment.

This device complies with Part 15 of the FCC Rules. Operation is subject to the following two conditions: (1) this device may not cause harmful interference, and (2) this device must accept any interference received, including interference that may cause undesired operation.

NOTE: This equipment has been tested and found to comply with the limits for a Class B digital device, pursuant to Part 15 of the FCC Rules. These limits are designed to provide reasonable protection against harmful interference in a residential installation. This equipment generates, uses and can radiate radio frequency energy and, if not installed and used in accordance with the instructions, may cause harmful interference to radio communications. However, there is no guarantee that interference will not occur in a particular installation.

If this equipment does cause harmful interference to radio or television reception, which can be determined by turning the equipment off and on, the user is encouraged to try to correct the interference by one or more of the following measures:

- Reorient or relocate the receiving antenna.
- Increase the separation between the equipment and receiver.
- Connect the equipment into an outlet on a circuit different from that to which the receiver is connected.
- Consult the dealer or an experienced radio/TV technician for help.

This equipment complies with FCC radiation exposure limits set forth for an uncontrolled environment. This transmitter must not be co-located or operating in conjunction with any other antenna or transmitter.

Make your trip more fashion
make the city more young



Which LOHAS are you?

I keep gentle and slow exercise

I love to get close to nature, and choose "organic" trip

Like to be different

More like to make my life be different

One thinking about the new life

One way of new low carbon trip