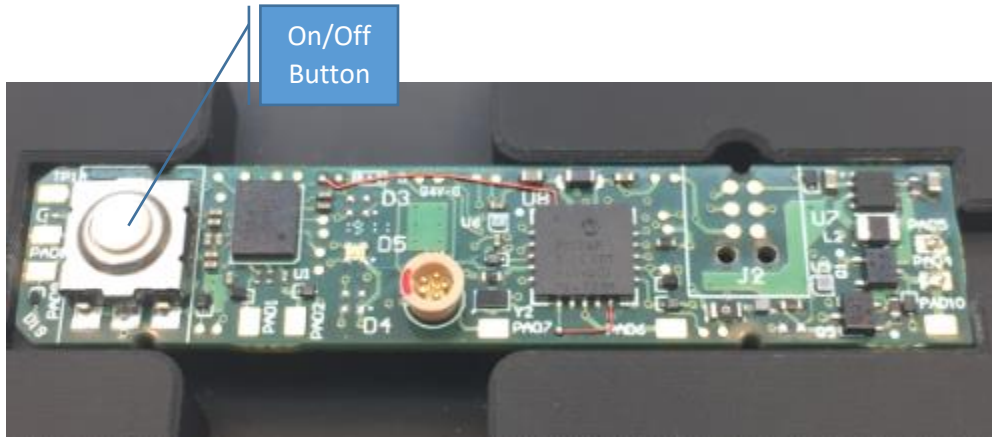
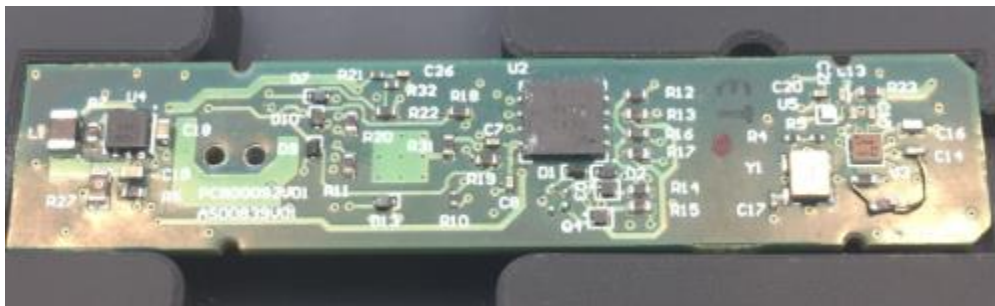


July 2, 2019

Inductive Pen PCBA as received from the Vendor



Top View



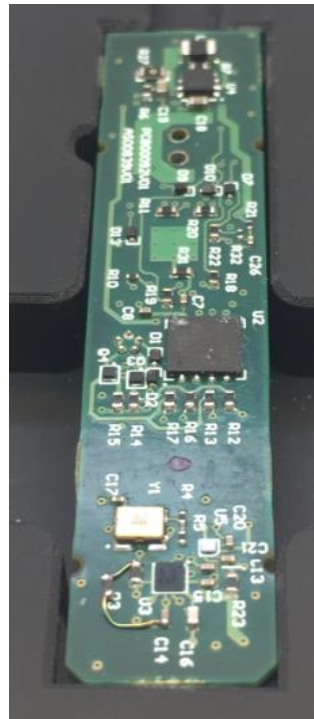
Bottom View



Top Left View



Top Right View



Bottom Left View

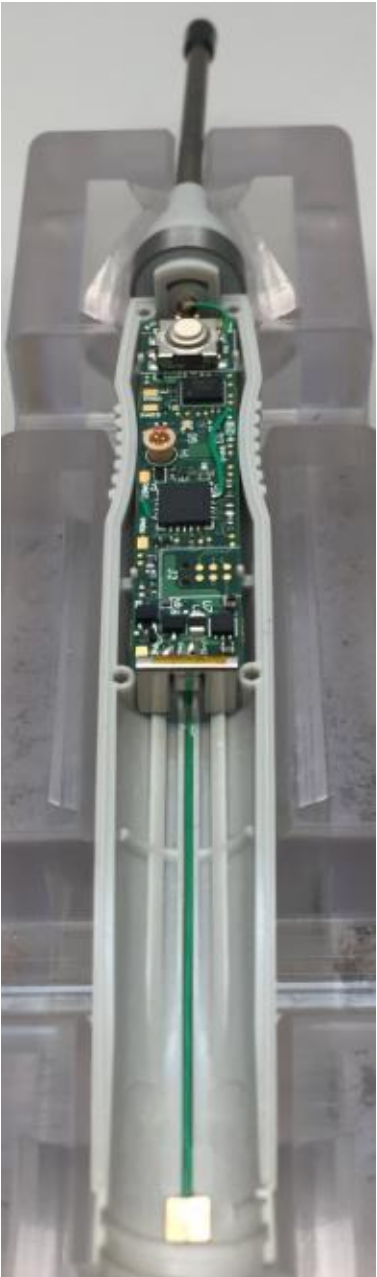


Bottom Right View

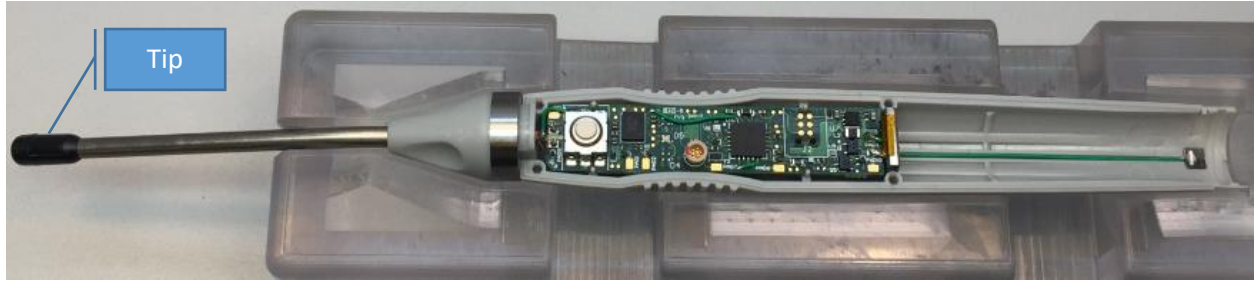
Inductive Pen PCBA Placement into Inductive Pen Housing



Top View from the Front



Top View from the Back



PCBA in Inductive Pen Handle

Top View