

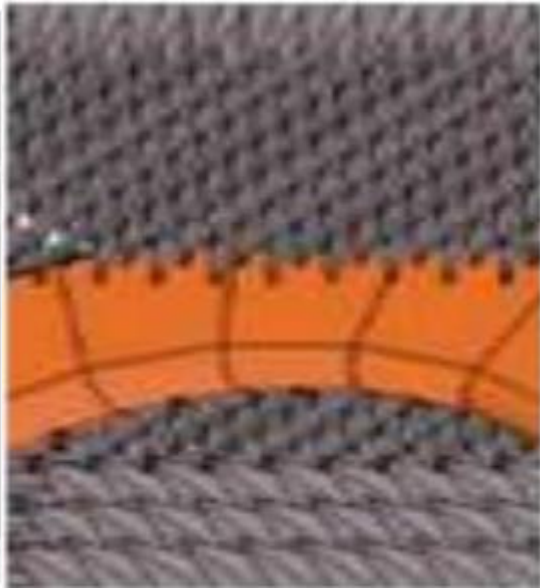
Project name: TD0551

Product name: TD0551- WIFI antenna

Material: PCB

Date: 2023.1.30

1. chamber room introduction and testing scope.

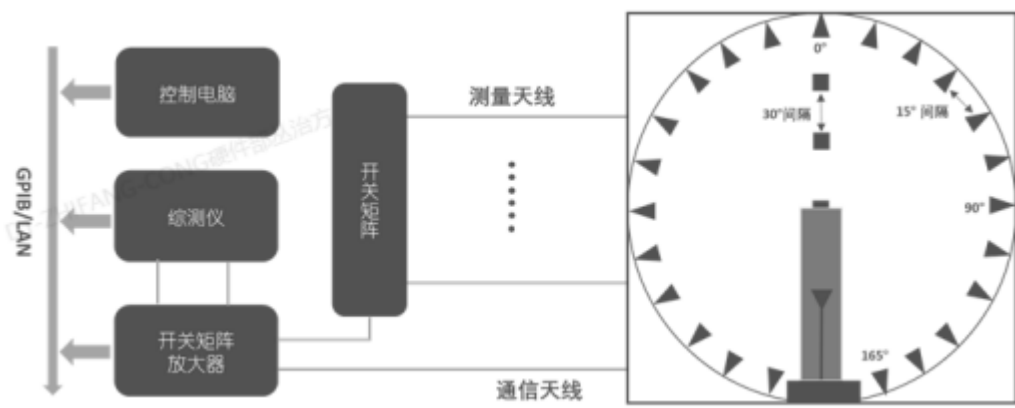


Our company has a number of OTA test darkrooms, ranging from 400MHz to 8.5ghz, which can provide passive test and active test (including OTA overall 2G,3G,4G,5GFR test, WiFi

multi-mode test, GPS active test, Bluetooth active test, which can provide antenna gain and efficiency. 2D orientation and apple chart analysis and upper and lower hemisphere efficiency values, mutual disturbance correlation coefficient test items

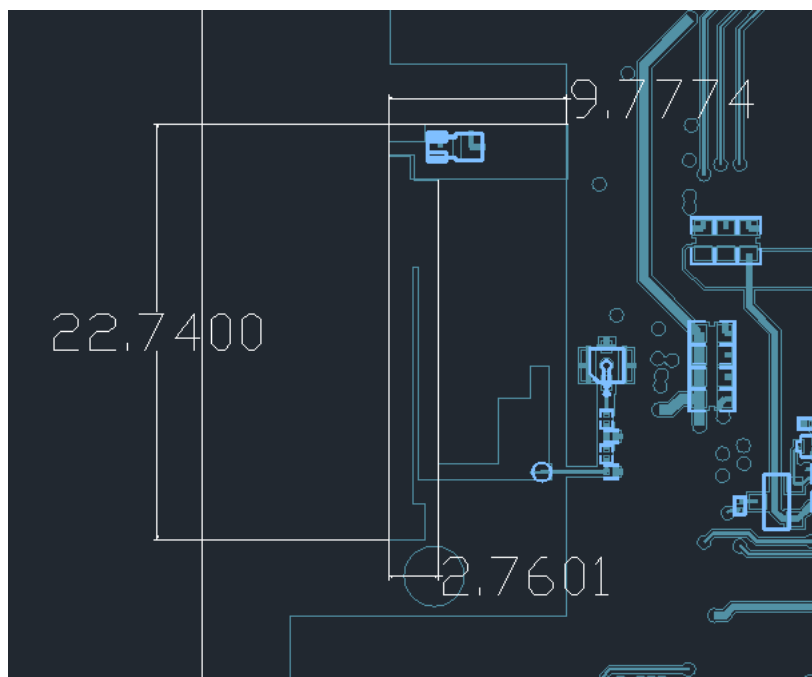
WIFI a/b/g/n/ac

2: test system introduction:

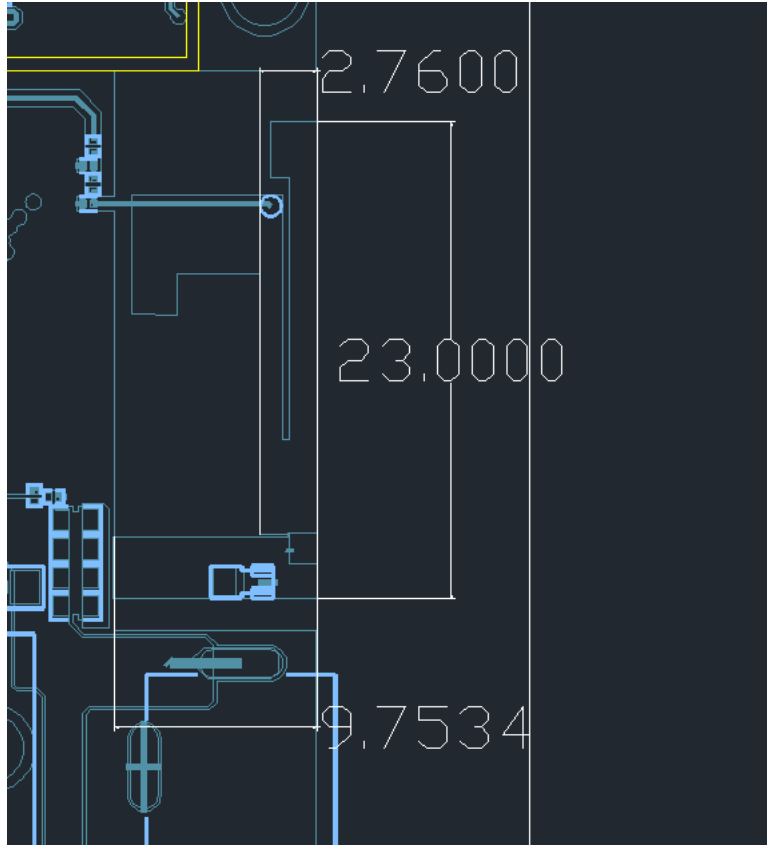


The figure above shows the connection and control process between the darkroom of our company and the testing system and computer. The testing system has the characteristics of accurate, fast and simple testing The operation interface is simple and humanized

3: Test result Antenna placement



Wifi-ant1 尺寸标注 (单位: mm)

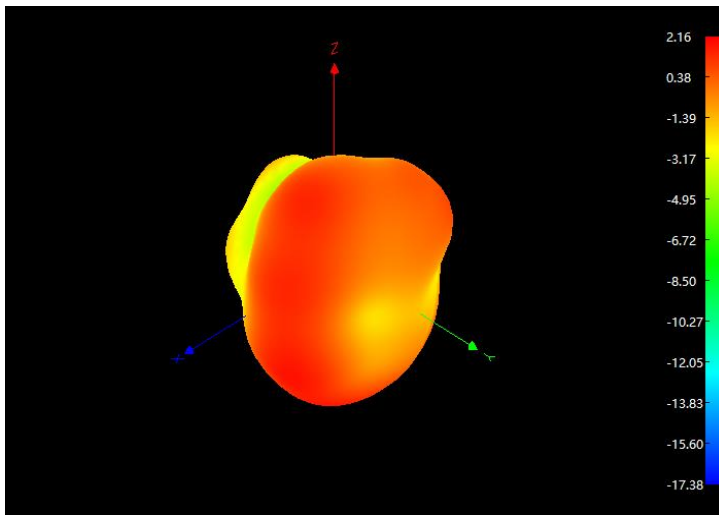


Wifi-ant0 尺寸标注 (单位: mm)

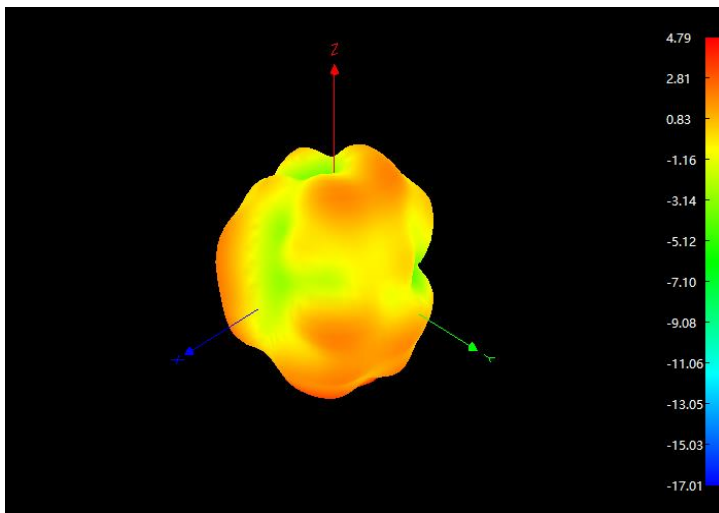
WIFI antenna Gain

Frequency range	WiFi -0(SISO)	WiFi-1(SISO)	MIMO
2.402-2.482GHz	2dBi	2dBi	2dBi
5.15~5.25GHz	2.60 dBi	2.60 dBi	2.60 dBi
5.25~5.35GHz	2.80 dBi	2.80 dBi	2.80 dBi
5.47~5.725GHz	2.80 dBi	2.80 dBi	2.80 dBi
5.725~5.825GHz	2.80 dBi	2.80 dBi	2.80 dBi
5.725~5.850GHz	2.90 dBi	2.90 dBi	2.90 dBi

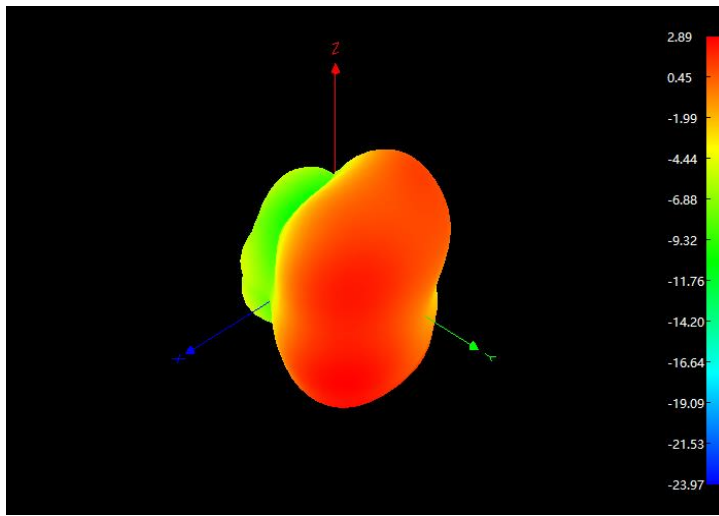
3D Pattern ANT 0_ 2.4G (Frequency=2450MHz)



3D Pattern ANT0_ 5G (Frequency=5550MHz)



3D Pattern ANT1_ 2.4G (Frequency=2450MHz)



3D Pattern ANT1_ 5G (Frequency=5550MHz)

