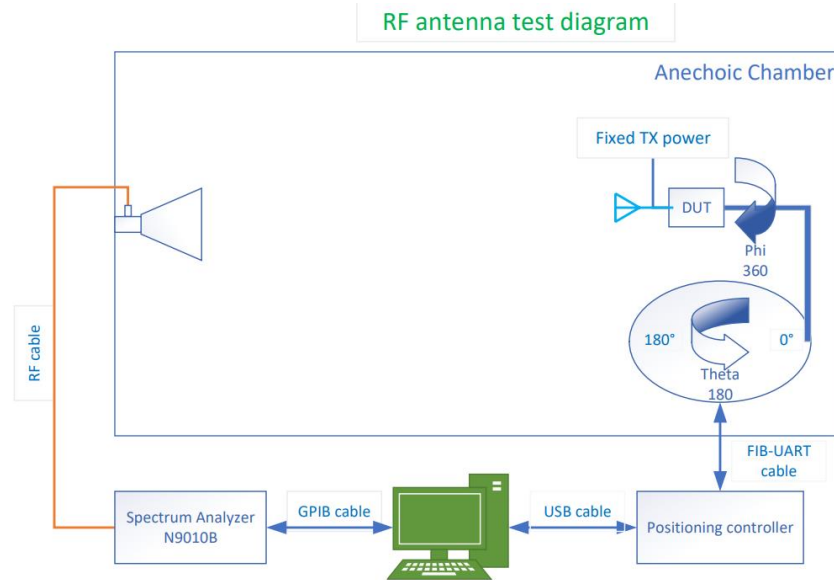
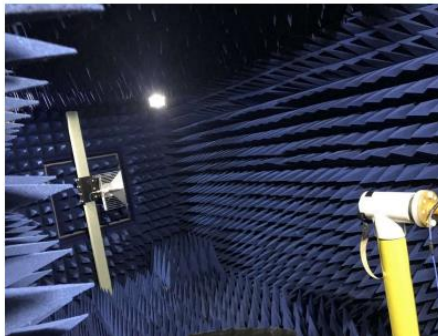


## 1. Antenna test environment and procedure

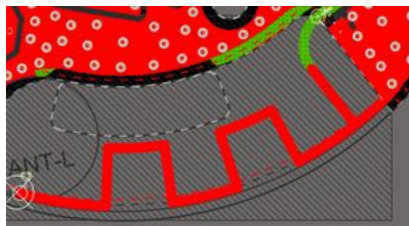


Test Block diagram



OTA Anechoic Chamber and Its control equipment

## 2. Antenna model



PIFA antenna

### 3. Antenna gain

The gain of horn antenna is tested, the Gain of antenna is calculated by comparing with tested horn antenna.

### 4. RF and antenna specification sheet

Frequency Range 频率范围: 2400 ~ 2483.5MHz	DATA Rate 传输速率: 250kbps (Zigbee); 1Mbps, 2Mbps, 500kbps, 125kbps (BLE)
Channel No. 频道数: Zigbee: 11 channels (2405MHz~ 2480MHz); BT: 40 channels (2402~2480MHz)	Modulation type 调制方式: O-QPSK (Zigbee); GFSK (BLE)
Max. Output Power 最大输出功率: +10dBm (Chip max RF output power)	Operating Temperature 工作温度: -25 -- 100 °C ambient
Antenna Gain 天线增益: 0.32 dBi (Peak)	Antenna Brand & Model 天线商标&型号: PCB Antenna (PIFA antenna)

3D

