

74 mm

105 mm

PHILIPS

hue personal
wireless
lighting

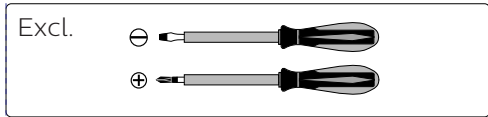
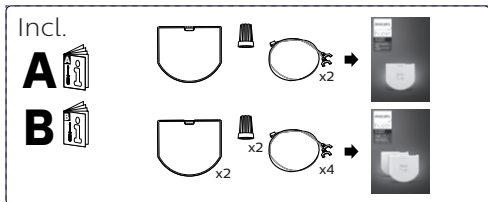
wall switch module
module d'interrupteur mural



User manual
Notice d'emploi
Manual de usuario

74 mm

105 mm



74 mm

105 mm



EN

Work on Electrical installations is in some countries only allowed by a qualified electrician. For support contact a local electrician or authority to install the product in accordance with national and electrical codes.

FR

Dans certains pays, les travaux sur les installations électriques ne peuvent être effectués que par des électriciens qualifiés. Pour toute demande d'assistance, veuillez contacter un électricien ou votre autorité locale afin d'installer le produit conformément aux codes nationaux et de l'électricité.

ES

En algunos países, únicamente los electricistas cualificados pueden trabajar en instalaciones eléctricas. Si necesitas asistencia, ponte en contacto con la autoridad o con un electricista local para instalar el producto de acuerdo a las legislaciones nacionales.



EN

The electrical circuit and attached light source will always be powered after installation, turn off the circuit breaker when replacing a light fixture / battery.

FR

Le circuit électrique et la source lumineuse raccordée seront toujours alimentés après l'installation. Par conséquent, mettez le circuit hors tension lors du remplacement d'un luminaire / pile.

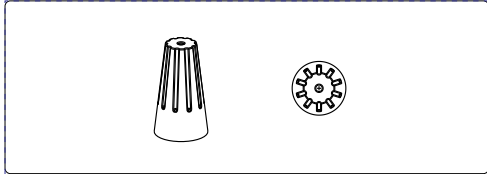
ES

Tras la instalación, el circuito eléctrico y la fuente de luz conectada siempre tendrán alimentación eléctrica. Apaga el circuito cuando cambies una luminaria / batería.



74 mm

105 mm



EN Wire Connectors Instructions:

1. Turn off power before installing or removing connectors.
2. Strip wires 5/16" (7.9mm). For #16 and smaller wires, strip 3/8" (9.5mm).
3. Pre-twisting unnecessary, hold stripped wires together with ends even.
Lead stranded wires slightly.
4. Push wires into connector and screw on until two twists are visible in wires.

For use with copper to copper conductor
Temperature Rating: 105°C (221°F) Max.
Voltage Rating: 600V Max. building wiring, 1000V Max. in fixtures and signs
Listed as a PRESSURE-TYPE wire connector on the following Solid wire combinations:
For UL Listed, CSA Certified

Max. wire size (AWG): 22 - 10
Splice capacity: 3+ ground

74 mm

105 mm

FR

Instructions de pose des connecteurs:

1. Coupez le courant avant d'installer ou d'enlever les connecteurs.
2. Dénudez les fils de 7,9 mm (5/16 po). Pour les fils de calibre 16 et plus petits, dénudez de 9,5 mm (3/8 po).
3. Il n'est pas nécessaire de pré-torsader, tenez les fils dénudés ensemble avec les extrémités à égalité. Torsadez légèrement les fils toronnés (en brins).
4. Insérez les fils dans le connecteur et vissez jusqu'à ce que deux torsades soient visibles dans les fils.

Pour utilisation avec fils conducteurs de cuivre à cuivre

Température de service: 105 °C (221 °F) max.

Tension de service: 600 V max. pour le câblage de bâtiment; 1000 V max. pour les appareils d'éclairage et les enseignes

Homologué en tant que connecteur de type à pression pour les combinaisons de fils massifs suivantes:

Pour fils homologués UL, CSA

Max. taille du fil (AWG): 22 - 10

Capacité d'épissage : 3+ terre

ES

Instrucciones para los conectores para alambres:

1. Apague la alimentación eléctrica antes de instalar o quitar los conectores.
2. Pele 5/16" (7,9mm) de los alambres. Si los alambres son del #16 o más pequeños, pele 3/8" (9,5mm).
3. No es necesario torcerlos primero. Sostenga los alambres pelados juntos, con las puntas parejas. Enderece ligeramente los alambres torcidos.
4. Introduzca los alambres en el conector y atornille hasta que vea dos vueltas en los alambres.

Para uso con conductores de cobre

Temperatura máxima: 105°C (221 °F)

Tensión nominal: 600V máx. cableado de edificios; 1000V máx. en aparatos eléctricos y letreros

Clasificado como conector TIPOA PRESION en las siguientes combinaciones de alambres sólidos:

Para alambres con certificación UL Listed, CSA

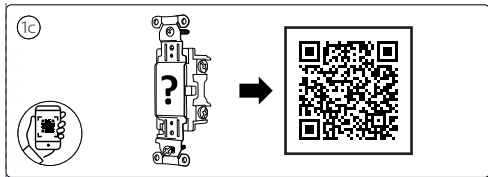
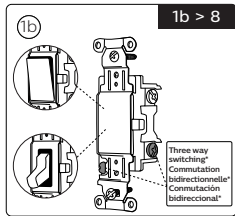
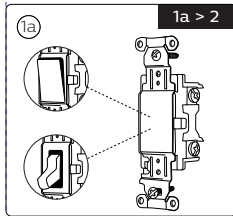
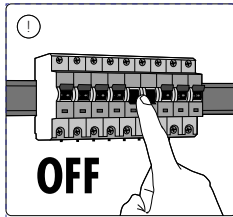
Max. tamaño del hilo (AWG): 22 - 10

Capacidad de empalme: 3+ tierra

5

74 mm

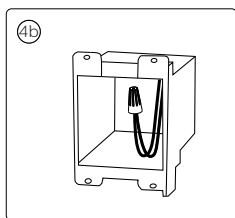
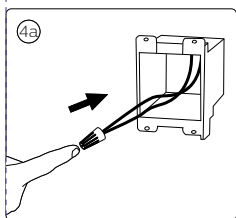
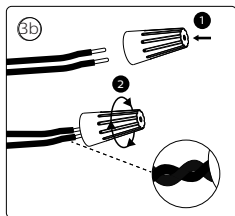
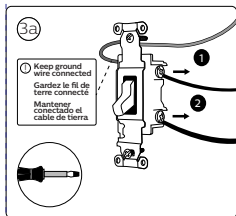
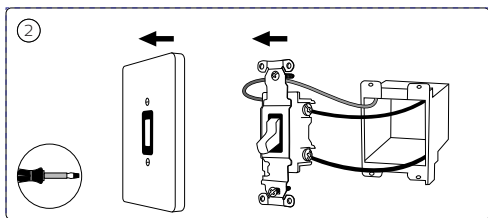
105 mm



* Terminal screw positions may vary per manufacturer.
* La position des vis-bornes peut varier selon le fabricant.
* Las posiciones de los tornillos conmutadores puede variar según el fabricante.

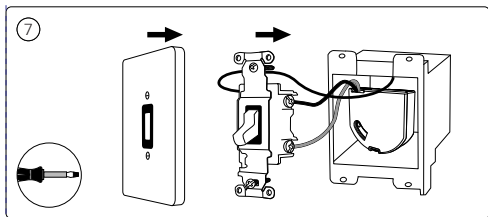
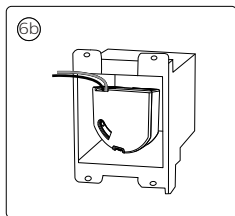
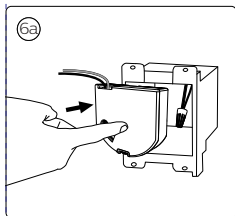
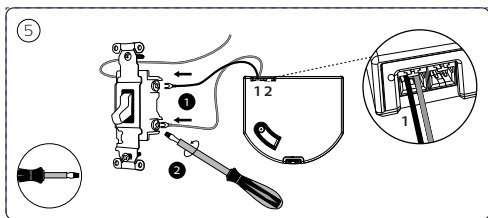
74 mm

105 mm



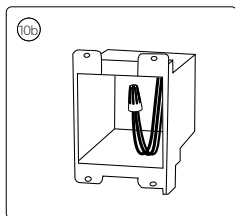
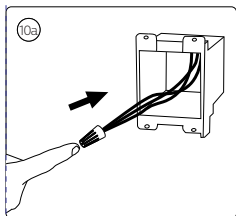
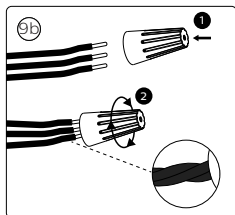
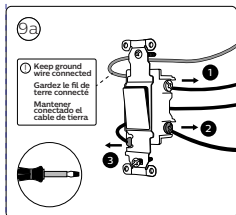
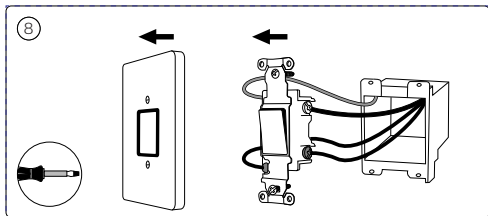
74 mm

105 mm



74 mm

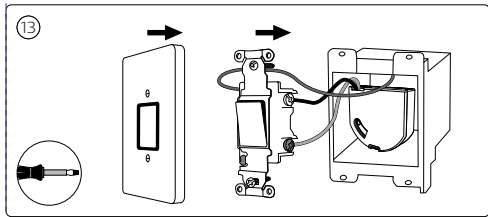
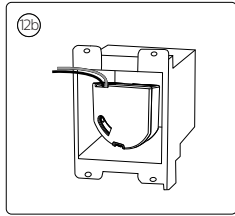
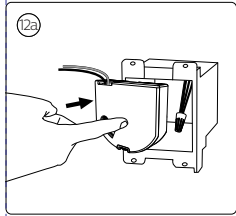
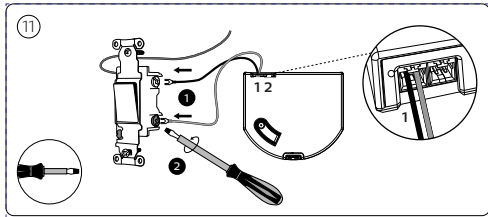
105 mm



9

74 mm

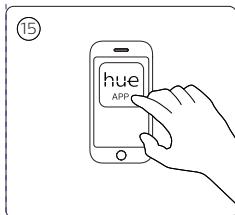
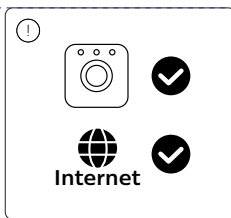
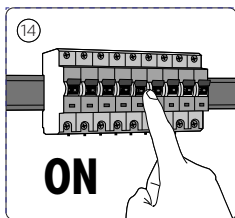
105 mm



10

74 mm

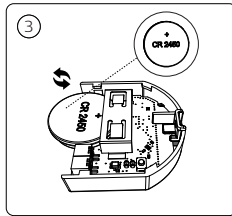
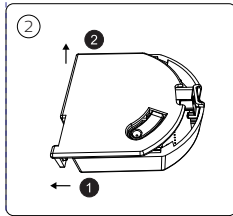
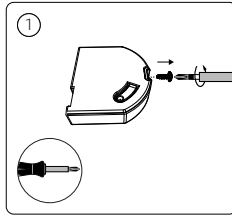
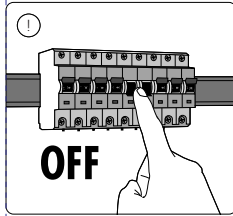
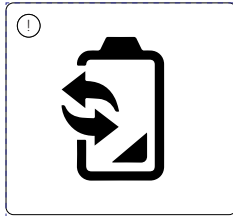
105 mm



www.philips-hue.com/wallswitchmodulesupport

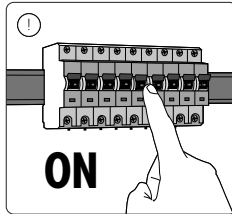
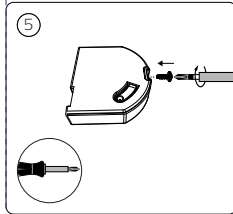
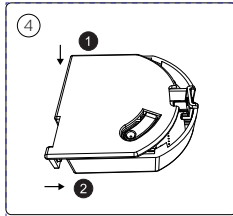
74 mm

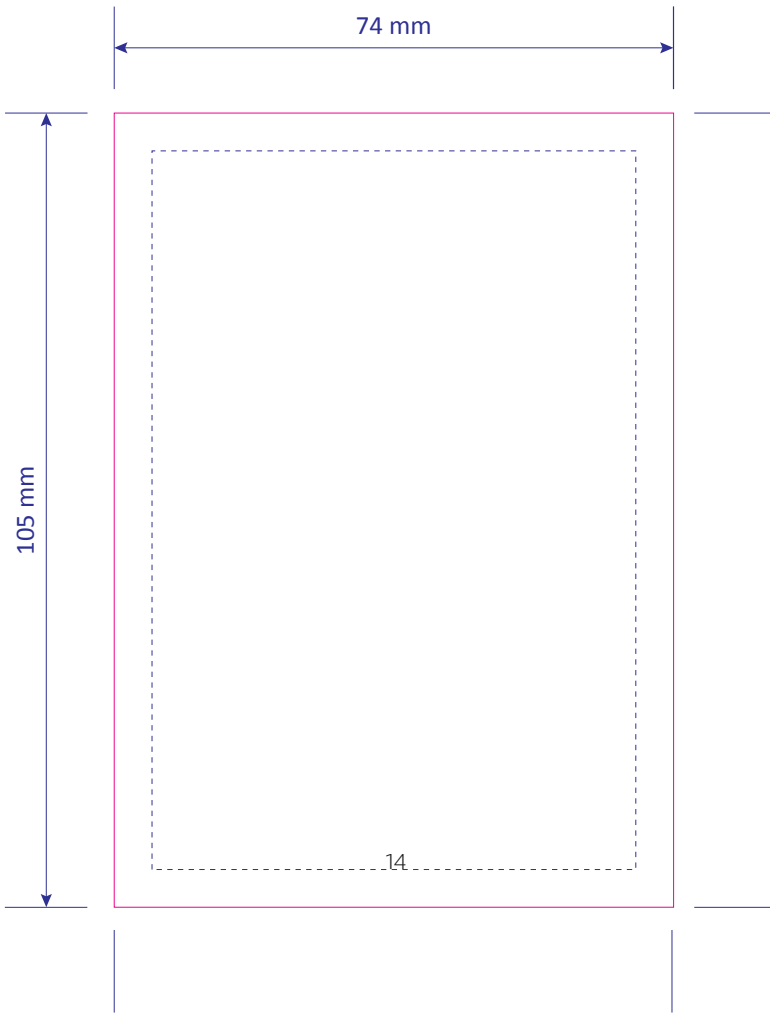
105 mm

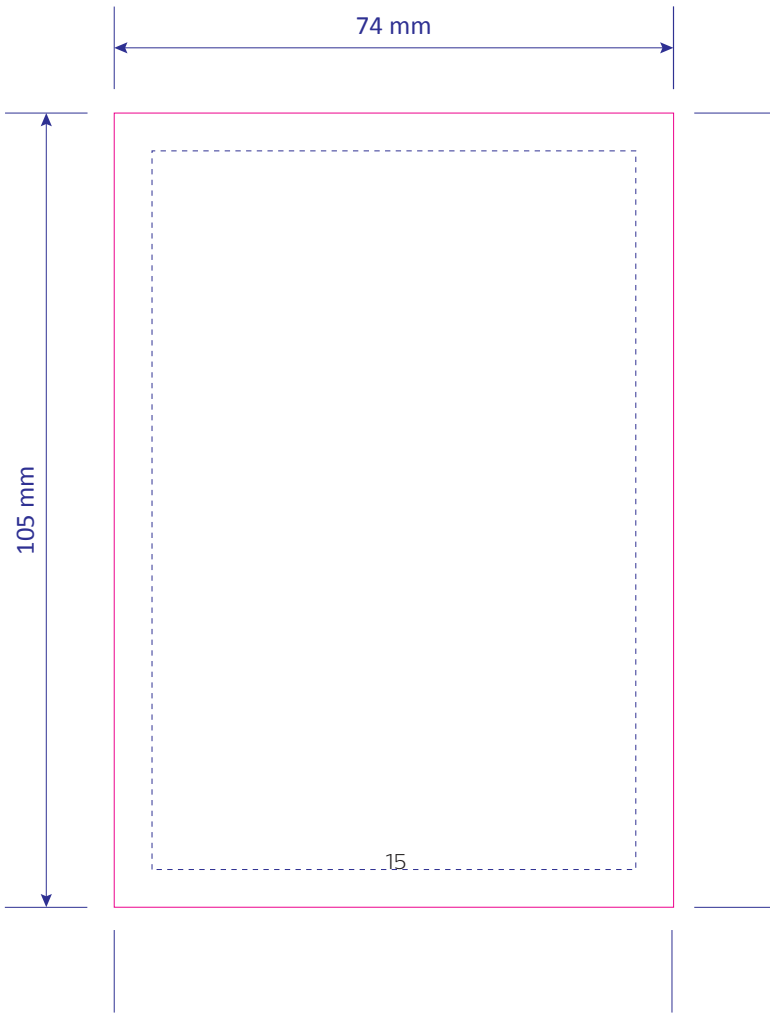


74 mm

105 mm







74 mm

105 mm



Signify North America Corporation
200 Franklin Square Drive
Somerset, NJ 08873, USA

Signify Canada Ltd./Signify Canada Ltée.
281 Hillmount Road,
Markham, ON, Canada L6C 2S3
Questions or Comments / Questions ou commentaires :
1-800-555-0050

Importado y/o distribuido en México por:
Signify Mexico S.A. de C.V.
Av. La Palma N° 6-Col. San Fernando,
La Herradura Huixquilucan
Edo. De México, C.P. 52784 - R.F.C. PME-620620-E84
Centro de contacto:
01-800-508-9000

www.philips-hue.com

© 2021 Signify Holding
All rights reserved

3222 639 07221
Last update: 02/2021