



FX505

深圳市奋兴科技发展有限公司
FXT Technology Co., Limited

ADD: 4th Floor, Building 3, HuiDeBao Industrial Park, GuanGuang Road,
GuangMing New District, Shenzhen 518107, China(Mainland)

TEL : +86-755-27909433

FAX : +86-755-23009693

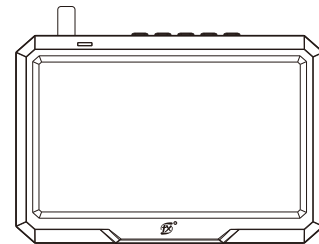
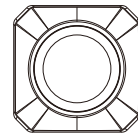
E-mail: info@szfxt.com

Website: www.szfxt.com



User Manual

Thank you for choosing our digital wireless backup camera tool kit.



Features:

1. Digital 2.4GHz wireless video transmission.
2. The image appears on the quick connection when booting.
3. IP68 waterproof camera.
4. The 5-inch monitor displays high-definition video images and has a built-in reversing guide line.
5. Easy to install, the camera and the 5-inch monitor are independent, you don't need to connect the wires from the back to the front, you only need to power the camera and the 5-inch monitor separately to work.

Specifications :

1.Monitor

LCD Size:	5 Inch Color Monitor
Operating Frequency:	2.4GHz~2.4835GHz
Transmitted Power:	16±1dBm@Maximum Power Setting
RX Sensitivity	-90dBm@10%PER
Resolution:	800(H)x 480(V)
Brightness:	500 cd/m
TV System:	PAL/NTSC
Power Supply:	DC+9V~+30V
Operating temperature:	-20°C~+70°C
Storage temperature:	-30°C~+80°C
Size	132.5x89.5x22.5mm

Transmission range max. 120 meters in open range

2.Camera

IP Class (Protection type):	IP68, waterproof
Image Sensor:	1/3 "HD CMOS
Operating Frequency:	2.4GHz~2.4835GHz
TV System:	NTSC/PAL
Resolution:	550TV Line
Minimum Illumination:	0 Lux [IR ON]
Transmitted Power:	16±1dBm@Maximum Power Setting
View angle:	110°
Power Supply:	DC+9V~+30V(Supporting power line voltage range)
Operating temperature:	-20°C~+70°C
Storage temperature:	-30°C~+80°C
Size	27x25x25mm

Product Packaging Accessories :

1. 5-inch monitor x1
2. Camera x1
3. 5-inch monitor car charger power cable x1
4. Camera power cable x1
5. 5-inch monitor mounting bracket x1
6. Camera fixing bracket (universal bracket and American license bracket optional) x1
7. Power cord connection buckle x3
8. Cable tie x4
9. Instructions x1

Product installation:

1. Install the camera

Step 1: Connect the camera cable and camera power cable

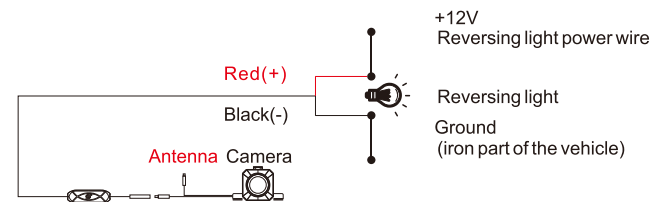
Step 2: Find the channel hole of the camera power cord

Look for an opening/drilling near the license plate of the vehicle to insert the connector cable plug of the camera into the vehicle interior.

Step 3: Find the positive and negative power supply of the reversing light

Please turn the key to the ACC position, and then shift the car to R gear.

Prepare a car test light, connect its clip to a known ground source, and then pierce the plastic insulation on the wire with the tip. If the bulb is on, it is the positive power supply for the reversing light, then pull out the key to turn off the power. Then carefully strip the red wire, then connect the red wire of the camera cable to the positive pole of the reversing light, and then ground the black wire of the camera.



Step 4: Remove the license plate



Step 5: Align the mounting hole of the camera bracket with the mounting hole of the license plate, then assemble the license plate, and then tighten the screws to fix the license plate.

Step 6: Use cable ties to fix the wires

Use cable ties to fix the wires to the rear bracke

Be Careful

Due to the differences in technology and design related models, these instructions do not apply to all models.

2. Install the monitor

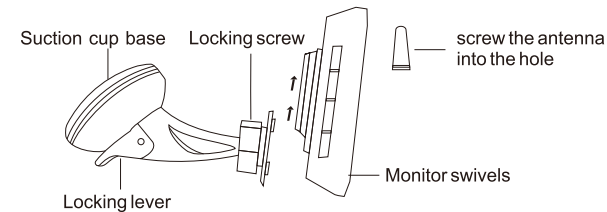
Step 1: Please connect the antenna to the wireless monitor.

Step 2: Open the locking screw and adjust the monitor to the desired viewing angle, then tighten the locking screw to fix the monitor.

Step 3: Clean the area where the suction cup base is to be connected to the windshield or dashboard. Now press the suction cup base onto the windshield or dashboard and move the lock lever to the suction cup base.

Step 4: Connect the monitor to the car charger wire.

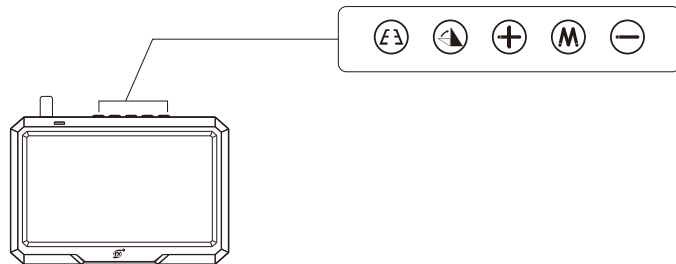
Step 5: Now plug the car charger into the car socket 12V, and place the display cable to avoid collision or endanger the safety of the vehicle and its passengers.



Be Careful

The position of the display should not affect the driver's field of vision! In addition, do not damage the function and operation of the equipment, control units and systems in the car. Observe the laws and safety regulations applicable to the vehicle!


Product Operation Instructions :







1. Description of monitor menu settings

Press the button  to turn the reversing guide line on / off.

Press the button  to mirror / normal image.

Press the button  to enter the menu mode, adjust the brightness and contrast

(use   to adjust), the menu option will disappear after about 3 seconds. Press the button  to enter the next option or exit.

Press the button  for about 3 seconds to perform code matching with the backup camera.

Basic Product Instructions :

1. Turn on the monitor

After plugging the car charger into the car's 12-volt power outlet, just start the car to turn on the display. When the camera is not turned on, the display will turn off automatically when it lights up for about 3 seconds, and the display indicator lights up in red. When the camera is turned on, the monitor will automatically turn on, and the monitor indicator will light up green.

Has been successfully opened.

2. Code Matching

Normally, the monitor is paired with the backup camera before leaving the factory, and you can find them in the same package. The purpose of this mode is limited to pairing with a new backup camera when the old camera needs to be replaced due to malfunction or damage.

Please make sure that the backup camera and monitor are turned on. Because when the display turns on automatically after about 3 seconds, pressing the (M) button has no effect. At this time, you need to press any button to turn on the display, and then press the (M) button to pair.

Pairing steps

Step 1: Power on the monitor and camera

Step 2: Press the (M) key for about 3 seconds to enter the pairing mode, the display will show "pairing", and it will automatically complete the pairing with the camera. After the pairing is successful, the monitor will display a real-time picture.

Step 3: Reversing After the reversing camera is correctly connected to the reversing lights, it will automatically turn on when you put your vehicle in reverse gear. In this mode, a guide will be displayed on the display to help reverse the car.

Troubleshooting :

1. The red light of the monitor is off: check whether the car charger is plugged in.
2. The red light on the monitor is on but there is no video image: check whether the power cord of the camera is properly connected.

Warranty and service :

You (as the end user) get a 12-month guarantee from the date of purchase.

During the warranty period, if there is damage, repair or other problems, please contact the point of sale or qualified experts.

The general warranty terms apply to defects in production and materials. Please return the defective product to the point of sale.

In order to process your warranty claim quickly, you need to:

A copy of the receipt showing the date of purchase.

Reason for claim (description of defect).

Customer support can visit www.szfx.com

Or, send an email to service representative on service@szfx.com

FCC Warning

This device complies with part 15 of the FCC Rules. Operation is subject to the following two conditions: (1) This device may not cause harmful interference, and (2) this device must accept any interference received, including interference that may cause undesired operation.

Any Changes or modifications not expressly approved by the party responsible for compliance could void the user's authority to operate the equipment.

Note: This equipment has been tested and found to comply with the limits for a Class B digital device, pursuant to part 15 of the FCC Rules. These limits are designed to provide reasonable protection against harmful interference in a residential installation. This equipment generates uses and can radiate radio frequency energy and, if not installed and used in accordance with the instructions, may cause harmful interference to radio communications. However, there is no guarantee that interference will not occur in a particular installation. If this equipment does cause harmful interference to radio or television reception, which can be determined by turning the equipment off and on, the user is encouraged to try to correct the interference by one or more of the following measures:

- Reorient or relocate the receiving antenna.
- Increase the separation between the equipment and receiver.
- Connect the equipment into an outlet on a circuit different from that to which the receiver is connected.
- Consult the dealer or an experienced radio/TV technician for help.

This equipment complies with FCC radiation exposure limits set forth for an uncontrolled environment. This equipment should be installed and operated with minimum distance 20cm between the radiator & your body.