

# FCC TEST REPORT

Under:  
FCC Part 15, Class B

Prepared For :

**SBD TECHNOLOGY HK CO.,LTD**

Unit A5,9/F Silvercorp International Tower,707-713 Nathan Road,Mongkok,Kowloon,Hong Kong

<b>FCC ID: 2AGAP-SMARTGLASSES</b>
<b>EUT: Smart Glasses</b>
<b>Model: S-Smart Glasse</b>

November 5, 2015
<b>Issue Date:</b>
Original Report
<b>Report Type:</b>
<i>Eric Guo</i>
<b>Test Engineer: Eric Guo</b>
<i>Apollo Liu</i>
<b>Review By: Apollo Liu / Manager</b>

The test report consists 21 pages in total. It may be duplicated completely for legal use with the allowance of the applicant. It shall not be reproduced except in full, without the written approval of Ke Mei Ou Laboratory Corporation. The test result in the report only applied to the tested sample.

## TABLE OF CONTENTS

<b>1. General Information .....</b>	<b>3</b>
1. 1 Notes.....	3
1. 2 Testing Laboratory.....	3
1. 3 Details of Applicant.....	3
1. 4 Application Details .....	3
1. 5 Test Item .....	3
1. 6 Test Standards.....	3
<b>2. Technical Test.....</b>	<b>4</b>
2. 1 Summary of Test Results .....	4
<b>3. EUT Modifications .....</b>	<b>4</b>
<b>4. Conducted Power Line Test.....</b>	<b>5</b>
4. 1 Test Equipment.....	5
4. 2 Test Procedure .....	5
4. 3 Test Setup .....	5
4. 4 Configuration of the EUT.....	6
4. 5 EUT Operating Condition.....	7
4. 6 Conducted Power Line Emission Limits .....	7
4. 7 Conducted Power Line Test Result.....	7
<b>5. Radiated Emission Test.....</b>	<b>9</b>
5. 1 Test Equipment.....	9
5. 2 Test Procedure .....	9
5. 3 Radiated Test Setup .....	9
5. 4 Configuration of The EUT.....	10
5. 5 EUT Operating Condition.....	10
5. 6 Radiated Emission Limit .....	10
5. 7 Radiated Emission Test Result.....	11
<b>6. Photo of Testing.....</b>	<b>12</b>
6.1 Emission test view.....	12
6.2 Photograph - EUT.....	14
<b>7. FCC ID Label.....</b>	<b>20</b>
<b>8. Test Equipment.....</b>	<b>21</b>

## 1. General Information

### 1.1 Notes

The test results of this report relate exclusively to the test item specified in 1.5. The KMO Lab does not assume responsibility for any conclusions and generalizations drawn from the test results with regard to other specimens or samples of the type of the equipment represented by the test item. The test report may only be reproduced or published in full. Reproduction or publication of extracts from the report requires the prior written approval of the KMO Lab.

### 1.2 Testing Laboratory

#### Ke Mei Ou Laboratory Co., Ltd.

ANSI-ASQ National Accreditation Board/ACLASS ISO/IEC 17025 Accredited Lab for telecommunication standards. The Registration Number is AT-1532. The testing quality system meets with ISO/IEC-17025 requirements, This approval results is accepted by MRA of ILAC.

FCC Test Site Registration Number: 962205

IC Test Site Registration Number: 4986A-2

Internet: [www.kmolab.com](http://www.kmolab.com)

### 1.3 Details of Applicant

Name : SBD TECHNOLOGY HK CO.,LTD

Address : Unit A5,9/F Silvercorp International Tower,707-713 Nathan Road,Mongkok,Kowloon,Hong Kong

### 1.4 Application Details

Date of Receipt of Application : October 19, 2015

Date of Receipt of Test Item : October 19, 2015

Date of Test : October 19~October 27, 2015

### 1.5 Test Item

Manufacturer : Shenzhen Spardar Smart Technology CO.,LTD

Address : Room 519 .5/F, Longsheng Comprehensive Service Building , #2 Longsheng Road, Longhua New District, Shenzhen City, Guangdong Province,China

Trade Name : N/A

Model No.(Base) : S-Smart Glasse

Model No.(Extension) : N/A

Description : Smart Glasses

#### Additional Information

Product Type : Bluetooth 4.0 LE (1TX, 1RX)

Radio Type : Intentional Transceiver

Power Type : DC 5V(From Host)

Modulation : see the below tables

Data Modulation : Bluetooth: GFSK (1Mbps))

Data Rate (Mbps) : see the below table

Frequency Range : 2402~2480MHz

Channel Number : 40

Antenna : Internal PCB, 0 dBi

Bluetooth

Type of Modulation	Data Rate
GFSK	1Mbps

### 1.6 Test Standards

FCC 15 Subpart B

Note: All radiated measurements were made in all three orthogonal planes. The values reported are the maximum values.

## 2. Technical Test

### 2.1 Summary of Test Results

The EUT has been tested according to the following specifications:

Standard	Test Type	Result	Notes
FCC Part 15, Paragraph 15.107	Conducted Test	PASS	Complies
FCC Part 15, Paragraph 15.109	Radiated Test	PASS	Complies

## 3. EUT Modifications

No modification by test lab.

## 4. Conducted Power Line Test

### 4.1 Test Equipment

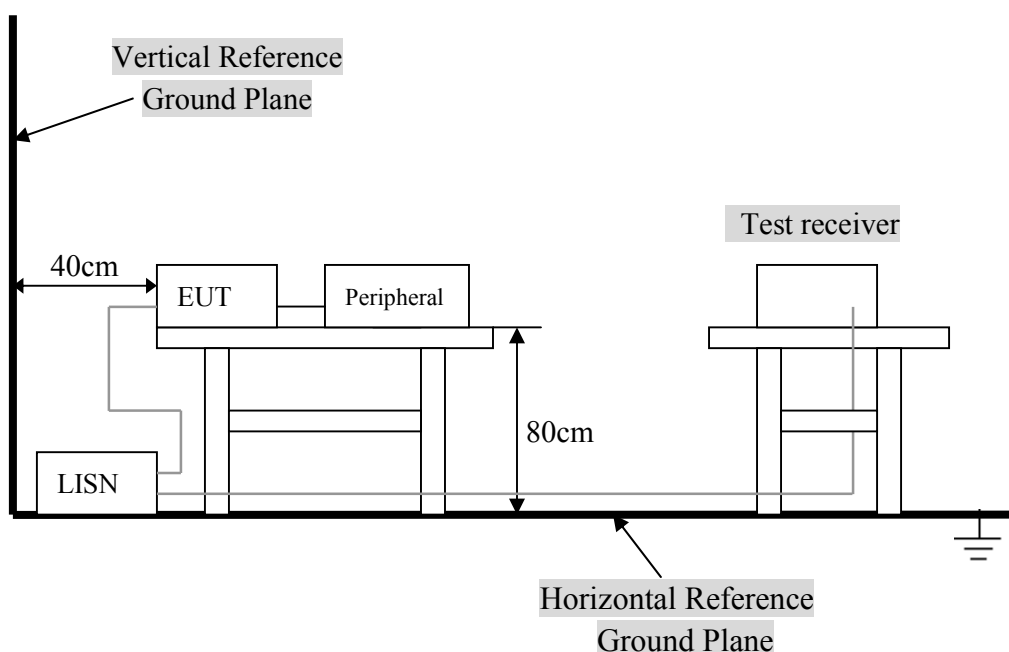
Please refer to Section 8 this report.

### 4.2 Test Procedure

The EUT and simulators are connected to the main power through a line impedance stabilization network (L.I.S.N.). This provides a 50 ohm/50uH coupling impedance for the measuring equipment. The peripheral devices are also connected to the main power through a LISN that provides a 50ohm/50uH coupling impedance with 50ohm termination.

Both sides of A.C. line are checked for maximum conducted interference. In order to find the maximum emission., the relative positions of equipment and all of the interface cables must be changed according to ANSI C63.10:2013 on conducted measurement. Conducted emissions were invested over the frequency range from 0.15MHz to 30MHz using a receiver bandwidth of 9kHz.

### 4.3 Test Setup



For the actual test configuration, Please refer to the related items – Photos of Testing.

#### 4. 4 Configuration of the EUT

The EUT was configured according to ANSI C63.10:2013. All interface ports were connected to the appropriate peripherals. All peripherals and cables are listed below.

##### A. EUT

Device	Manufacturer	Model #	FCC ID
Smart Glasses	Shenzhen Spardar Smart Technology CO.,LTD	S-Smart Glasse	2AGAP-SMARTGLASSES

##### B. Internal Devices

Device	Manufacturer	Model #	FCCID / DoC
N/A			

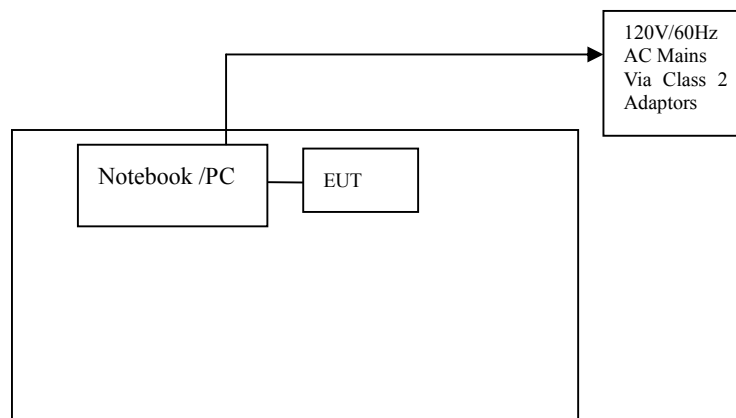
##### C. Peripherals

Device	Manufacturer	Model # Serial #	FCC ID/ DoC	Cable
Printer	HP	HP930C	DoC	1.5m unshielded power cord 1.2m unshielded data cable.
Modem	GVC	N/A	DoC	1.5m unshielded power cord 1.2m unshielded data cable.
Notebook	DELL	PP10L	DoC	1.5m unshielded power cord
PC	Dell	2400n	DoC	1.5m unshielded power cord

## 4.5 EUT Operating Condition

Operating condition is according to ANSI C63.4 - 2003.

- A. Setup the EUT and simulators as shown on follow.
- B. Modulate output capacity of EUT up to specification.



## 4.6 Conducted Power Line Emission Limits

Frequency Range (MHz)	Class A QP/AV (dBuV)	Class B QP/AV (dBuV)
0.15 – 0.5	79/66	66 –56/56 –46
0.5 – 5.0	73/60	56/46
5.0 – 30	73/60	60/50

**Note:** In the above table, the tighter limit applies at the band edges.

## 4.7 Conducted Power Line Test Result

The frequency spectrum from 0.15 MHz to 30 MHz was investigated. All readings are quasi -peak values with a resolution bandwidth of 9 KHz.

- Temperature : 26 °C
- Humidity : 53 % RH

FCC Part 15 Paragraph 15.107							
Frequency (MHz)	Emission (dBuV)		LINE/NEUTRAL	Limit (dBuV)		Margin (dB)	
	QP	AV		QP	AV	QP	AV
0.178	53.67	41.05	Line	64.58	54.58	-10.91	-13.53
0.154	46.78	29.83	Neutral	65.78	55.78	-19.00	-25.95
0.186	52.45	38.12	Line	64.21	54.21	-11.76	-16.09
0.158	46.21	29.54	Neutral	65.57	55.57	-19.36	-26.03
0.194	51.51	36.94	Line	63.86	53.86	-12.35	-16.92
0.190	51.56	37.71	Neutral	64.04	54.04	-12.48	-16.33

**Note:** NF = No Significant Peak was Found.

**Note:**

- 1.Uncertainty in conducted emission measured is <+/- 2dB.
- 2.The emission levels of other frequencies were very low against the limit.
- 3.All Reading Levels are Quasi-Peak and Average value.
- 4.Emission = Meter Reading + Factor; Factor = Insertion Loss + Cable Loss.
- 5.Margin Value = Emission Level - Limit Value.

Conducted Emission

FCC 15.107

EUT: Smart Glasses

Test Specification: LINE&NEUTRAL

Comment:



Date: 20.OCT.2015 10:12:27



## 5. Radiated Emission Test

### 5.1 Test Equipment

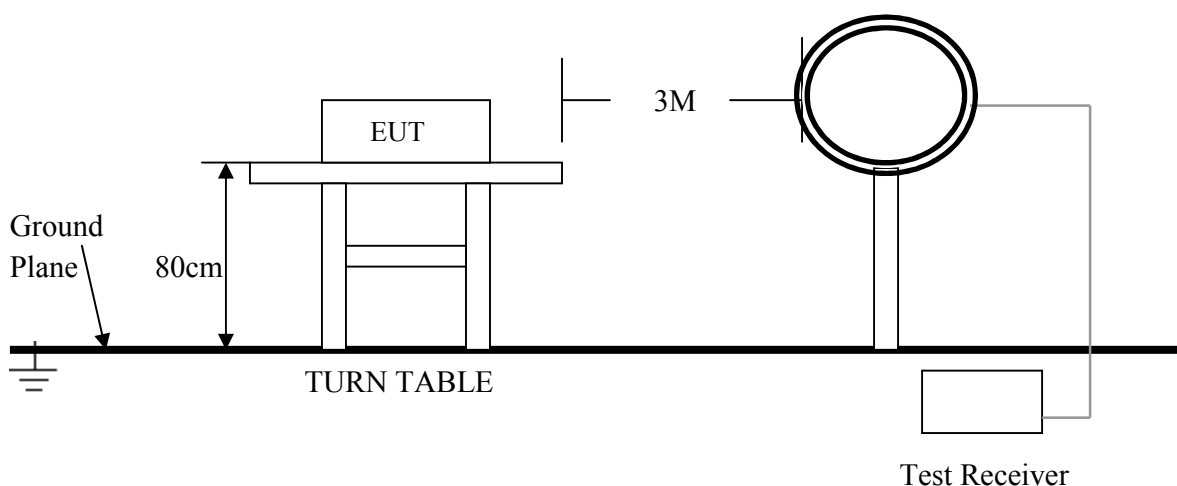
Please refer to Section 8 this report.

### 5.2 Test Procedure

1. The EUT was tested according to ANSI C63.10:2013.
2. The EUT, peripherals were put on the turntable which table size is 1m x 1.5 m, table high 0.8 m, and which is 1.5 m high for above 1 GHz. All set up is according to ANSI C63.10:2013 .
3. The frequency spectrum from 9 kHz to 25 GHz was investigated. All readings from 9 kHz to 150 kHz are quasi-peak values with a resolution bandwidth of 200 Hz. All readings from 150 kHz to 30 MHz are quasi-peak values with a resolution bandwidth of 9 KHz. All readings from 30 MHz to 1 GHz are quasi-peak values with a resolution bandwidth of 120 KHz. All readings are above 1 GHz , peak values with a resolution bandwidth of 1 MHz . Measurements were made at 3 meters.
4. The emissions from the EUT were measured continuously at every azimuth by rotating the turntable. The Receiving antenna high is varied from 1 m to 4 m high to find the maximum emission for each frequency. Emissions below 30MHz were measured with a loop antenna while emission above 30MHz were measured using a broadband E-field antenna.
5. Maximizing procedure was performed on the six (6) highest emissions to ensure EUT compliance is with all installation combinations. All data was recorded in the peak detection mode. Quasi-peak readings was performed only when an emission was found to be marginal (within -4 dB of specification limit), and are distinguished with a "QP" in the data table.
6. Each emission was to be maximized by changing the polarization of receiving antenna both horizontal and vertical. In order to find out the max. emission, the relative positions of this transmitter(EUT) was rotated through three orthogonal axes according to the requirements in Section 8 and 13 of ANSI C63.10:2013

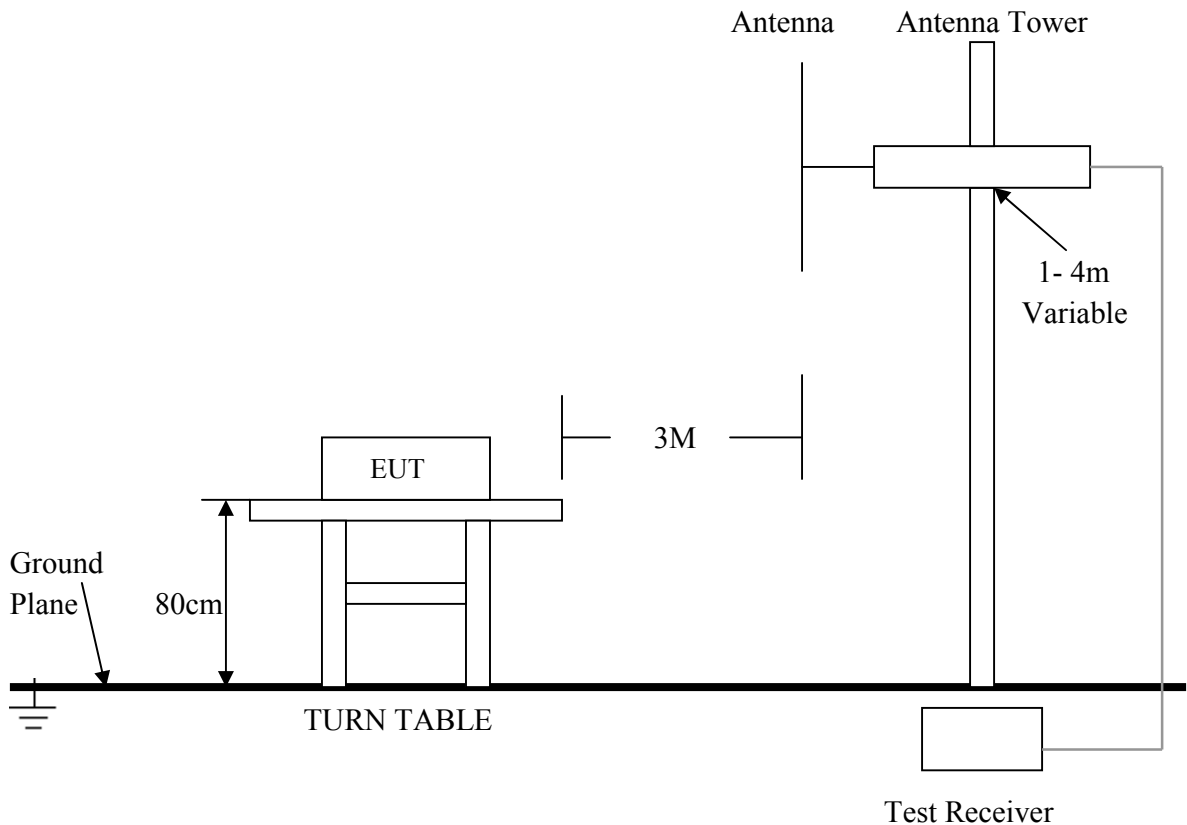
### 5.3 Radiated Test Setup

For Frequencies below 30 MHz



For the actual test configuration , please refer to the related items – Photos of Testing

For Frequencies above 30 MHz



For the actual test configuration , please refer to the related items – Photos of Testing

5. 4 Configuration of The EUT

Same as section 4.4 of this report

5. 5 EUT Operating Condition

Same as section 4.5 of this report

5. 6 Radiated Emission Limit

All emission from a digital device, including any network of conductors and apparatus connected thereto, shall not exceed the level of field strength specified below:

Frequencies in restricted band are complied to limit on Paragraph 15.109.

Frequency (MHz)	Distance (m)	Field Strength (dBuV/m)
30 - 88	3	40.0
88 - 216	3	43.5
216 - 960	3	46.0
Above 960	3	54.0

Note:

1. In the emission tables above, the tighter limit applies at the band edges.
2. Distance refers to the distance between measuring instrument, antenna, and the closest point of any part of the device or system.
3. The lower limit shall apply at the transition frequencies.

## 5.7 Radiated Emission Test Result

The frequency spectrum from 30 MHz to 1 GHz was investigated. All readings from 30 MHz to 1 GHz are quasi-peak values with a resolution bandwidth of 120 KHz. All readings are above 1 GHz, peak values with a resolution bandwidth of 1 MHz. Measurements were made at 3 meters.

- Temperature : 24 °C
- Humidity : 56 %RH
- Result : **PASSED**

### For Frequency below 30MHz

Freq. (MHz)	Emission (dBuV/m) QP Detector	HORIZ / VERT	Limits (dBuV/m)	Margin (dB)
N/A				
N/A				
N/A				
N/A				
N/A				
N/A				

- Note:**
- (1) All Readings below 1GHz are Quasi-Peak, above are performed with peak and/or average measurements as necessary.
  - (2) "N/A" remark, if no specific emissions from the EUT are recorded (ie: margin>20dB from the applicable limit) and considered that's already beyond the background noise floor.
  - (3) Emission Level = Reading Level + Probe Factor + Cable Loss.

### For Frequency from 30MHz to 1GHz

Freq. (MHz)	Emission (dBuV/m) QP Detector	HORIZ / VERT	Limits (dBuV/m)	Margin (dB)
412.160	33.45	HORZ	46.0	-12.55
33.280	24.41	VERT	40.0	-15.59
730.760	36.93	HORZ	46.0	-9.07
384.040	27.44	VERT	46.0	-18.56
831.360	35.67	HORZ	46.0	-10.33
730.720	36.11	VERT	46.0	-9.89

- Note:**
- (1) All Readings below 1GHz are Quasi-Peak, above are performed with peak and/or average measurements as necessary.
  - (2) Emission Level = Reading Level + Probe Factor + Cable Loss.

### Frequency above 1 GHz

Freq. (MHz)	Emission (dBuV/m)		HORIZ / VERT	Limits (dBuV/m)		Margin(dB)	
	PK	AV				PK	AV
2110.200	50.12	37.21	HORZ	74	54	-23.88	-16.79
2124.800	49.29	36.94	VERT	74	54	-24.71	-17.06
2320.400	53.13	38.57	HORZ	74	54	-20.87	-15.43
2358.600	52.29	38.04	VERT	74	54	-21.71	-15.96
N/A			HORZ				
N/A			VERT				

- Note:**
- (1) All Readings below 1GHz are Quasi-Peak, above are performed with peak and/or average measurements as necessary.
  - (2) "N/A" remark, if no specific emissions from the EUT are recorded (ie: margin>20dB from the applicable limit) and considered that's already beyond the background noise floor.
  - (3) Emission Level = Reading Level + Probe Factor + Cable Loss.

## 6. Photo of Testing

### 6.1 Emission test view

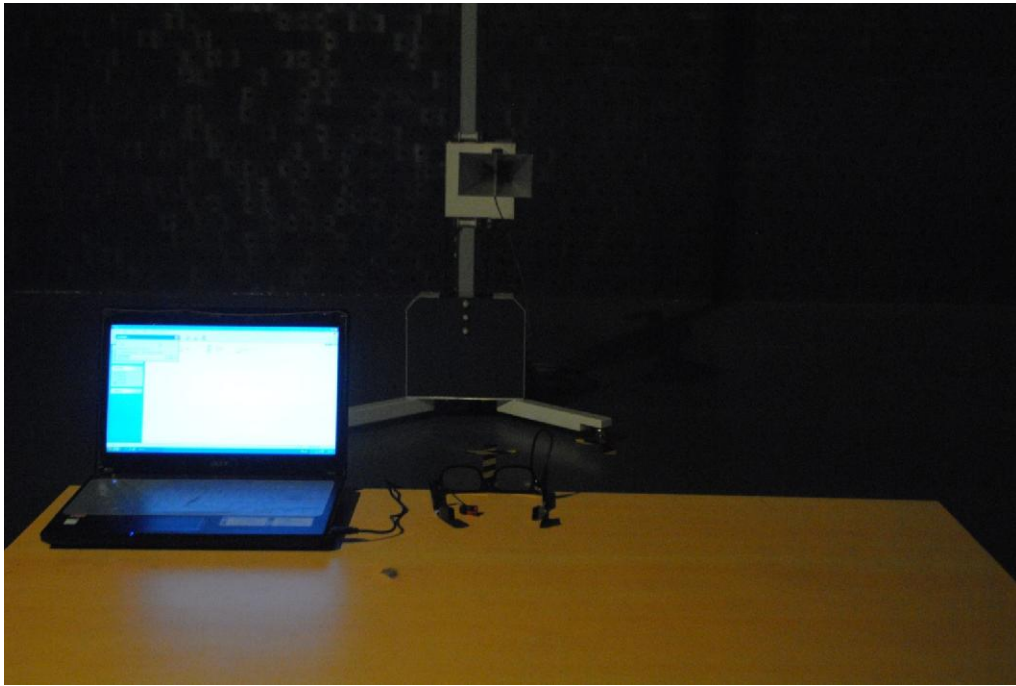
Conducted Emission test view



Radiated Emission test view(Frequency from 30MHz to 1GHz)

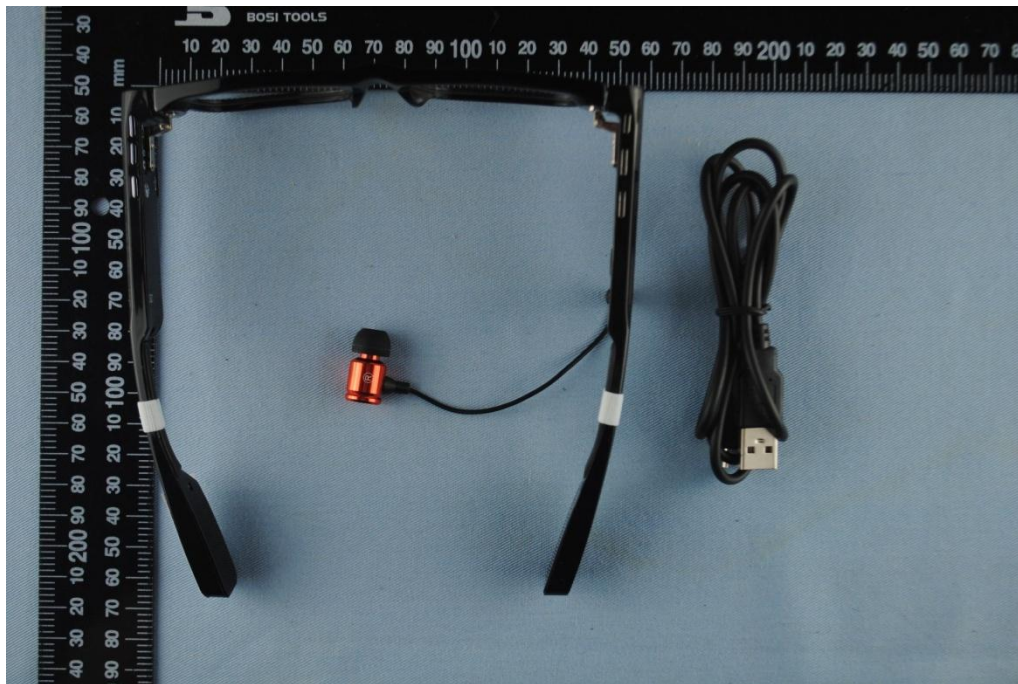


Radiated Emission test view(Frequency above 1GHz)

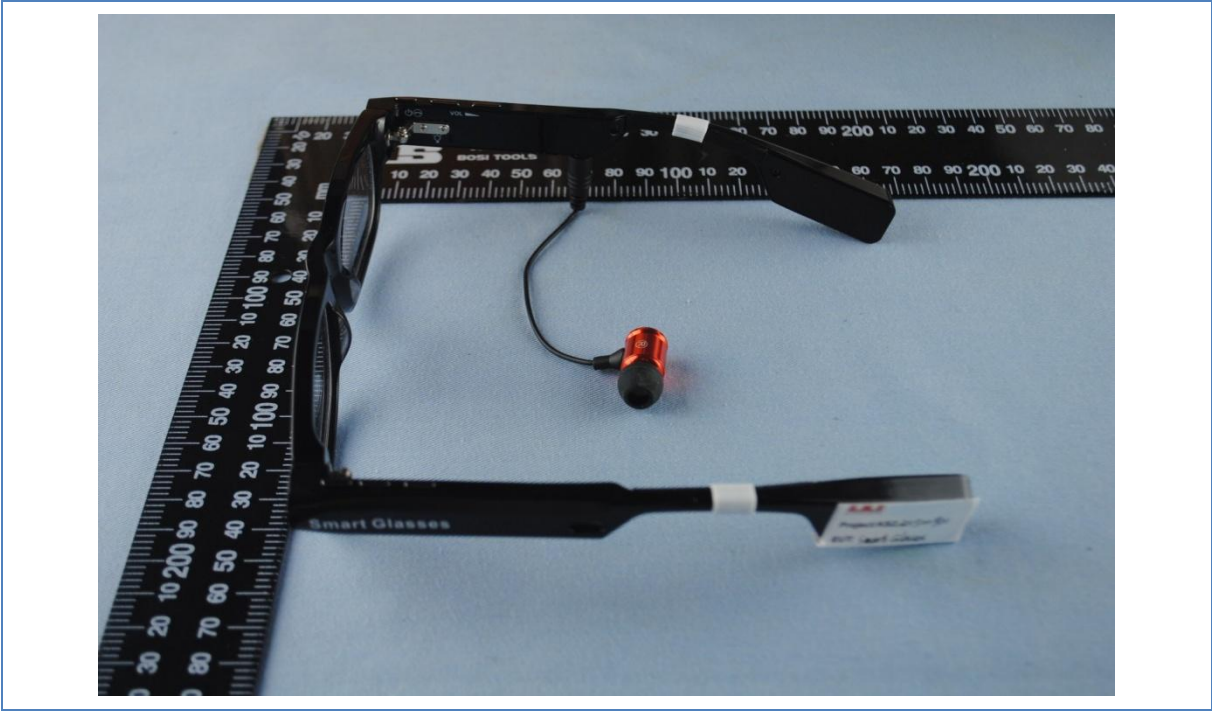


## 6.2 Photograph - EUT

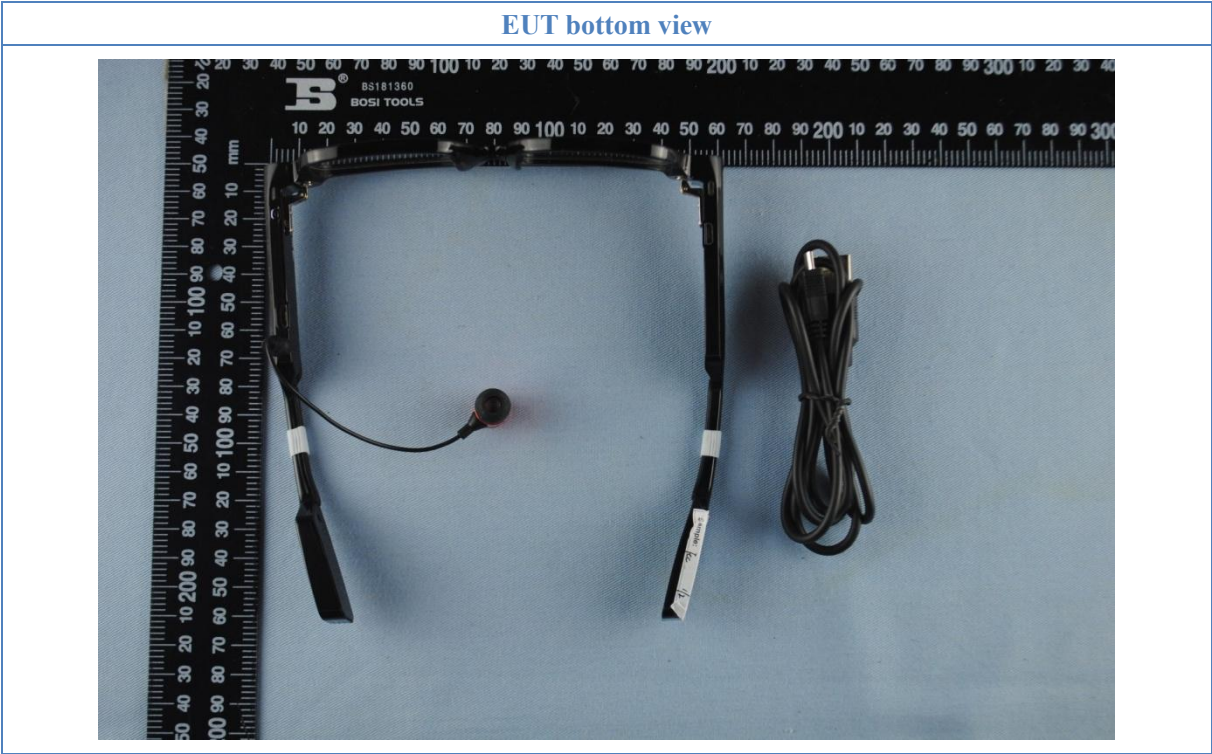
EUT top view

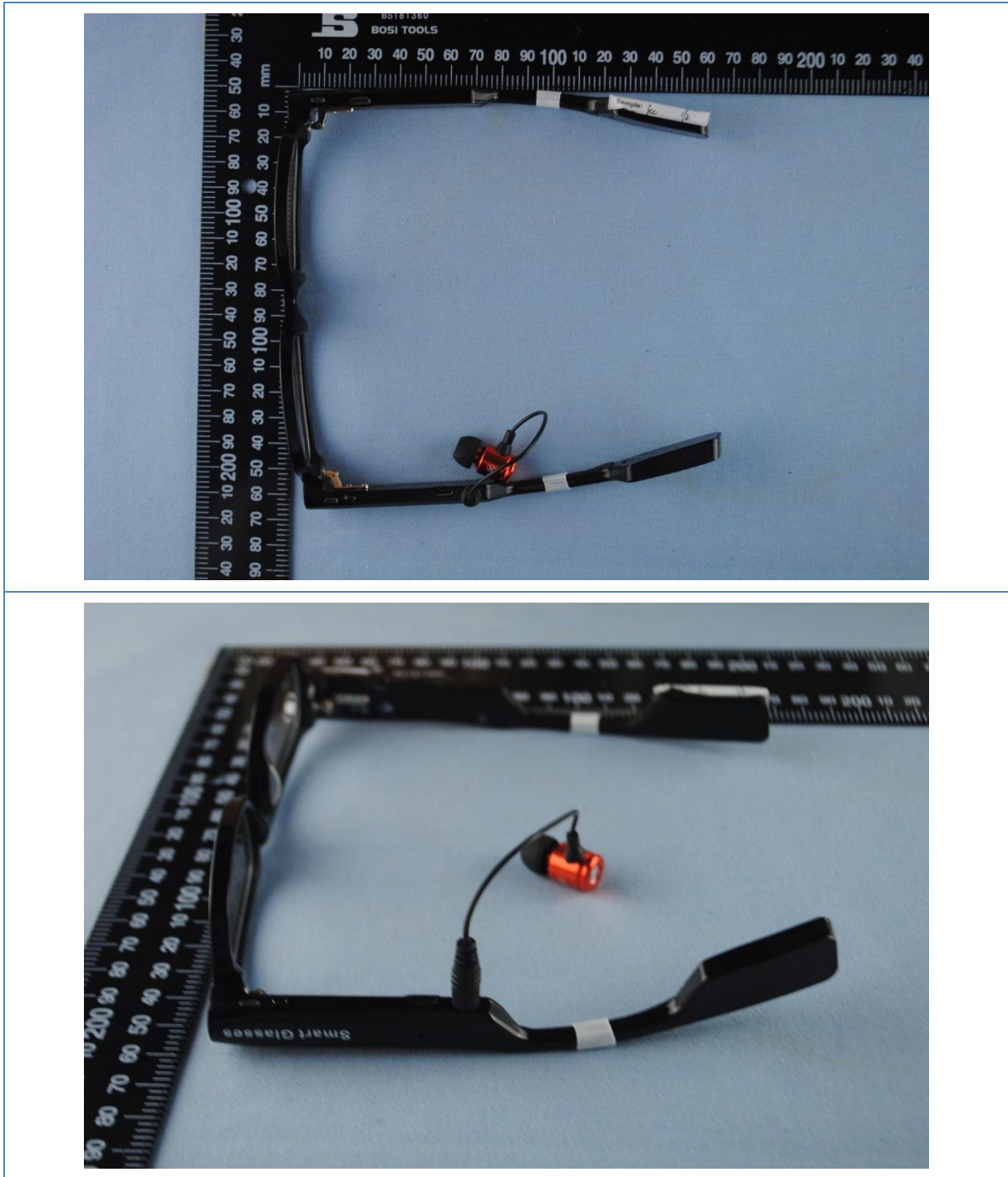






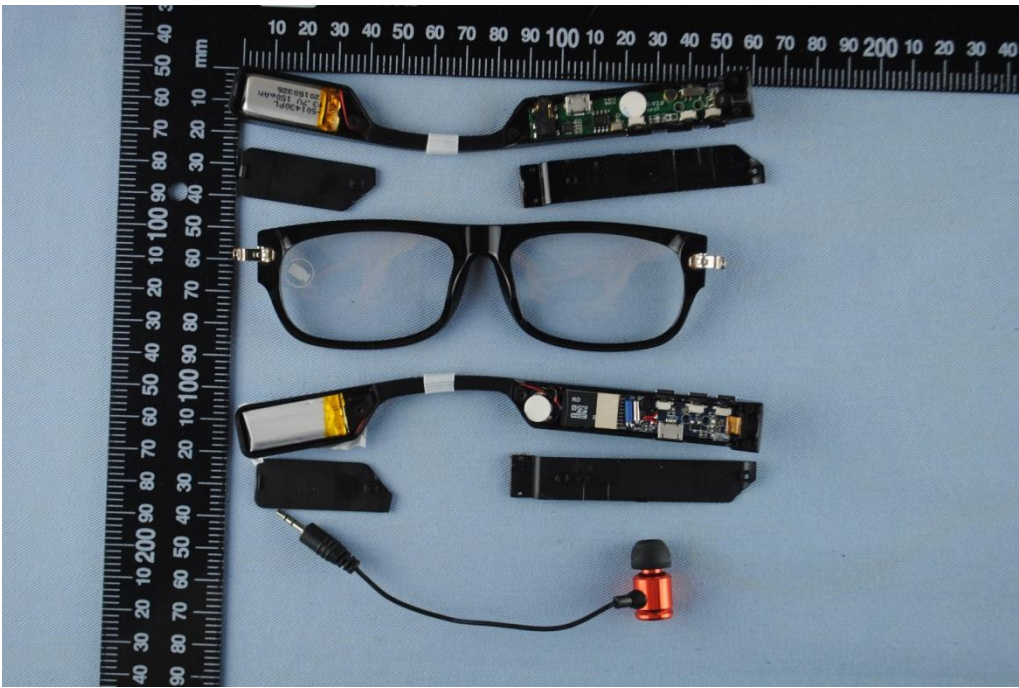
EUT bottom view



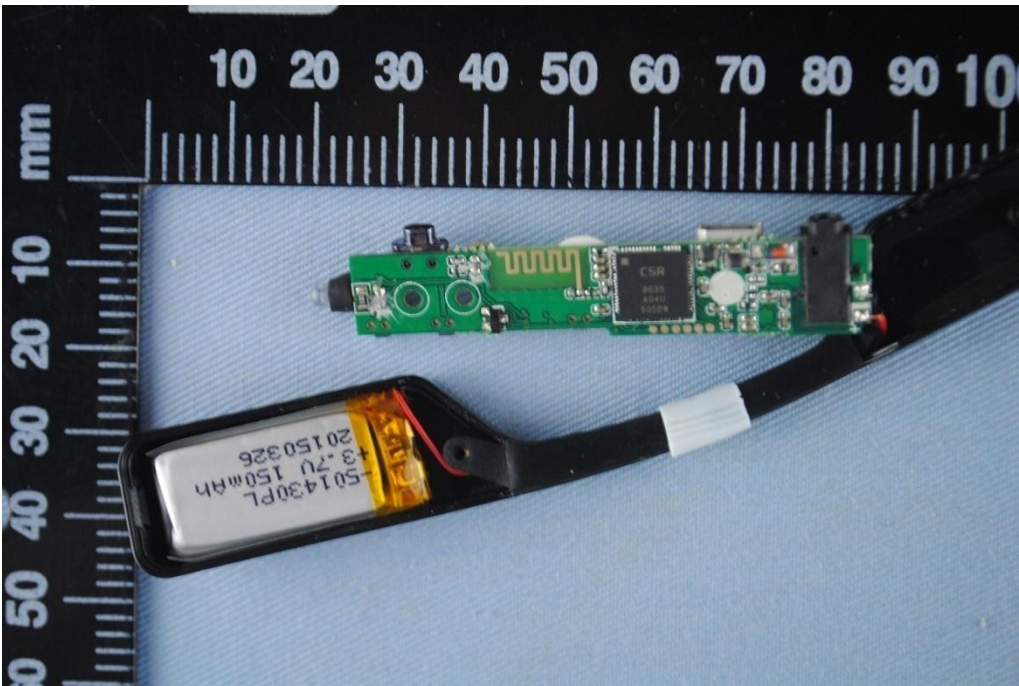


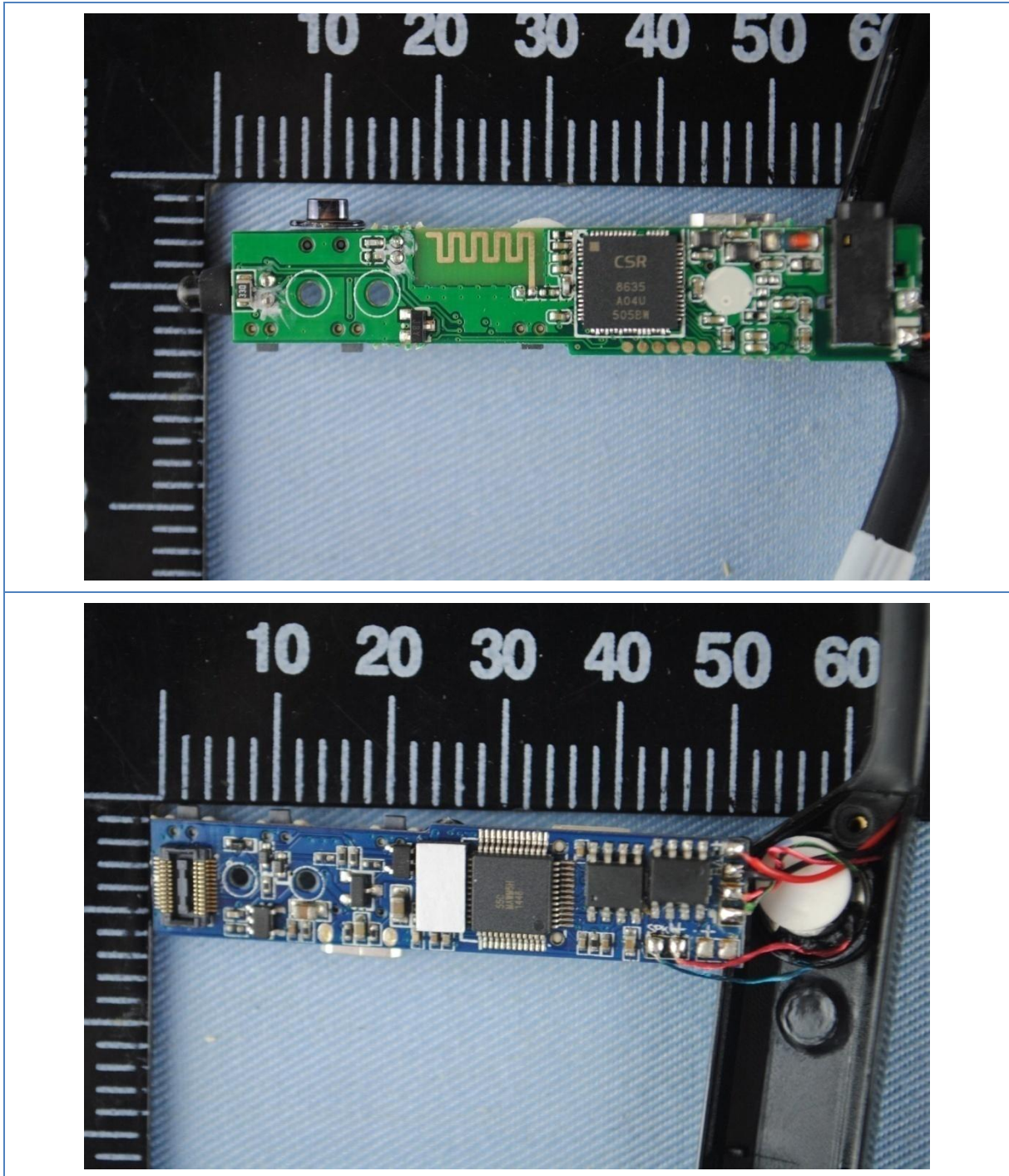


EUT inside whole view



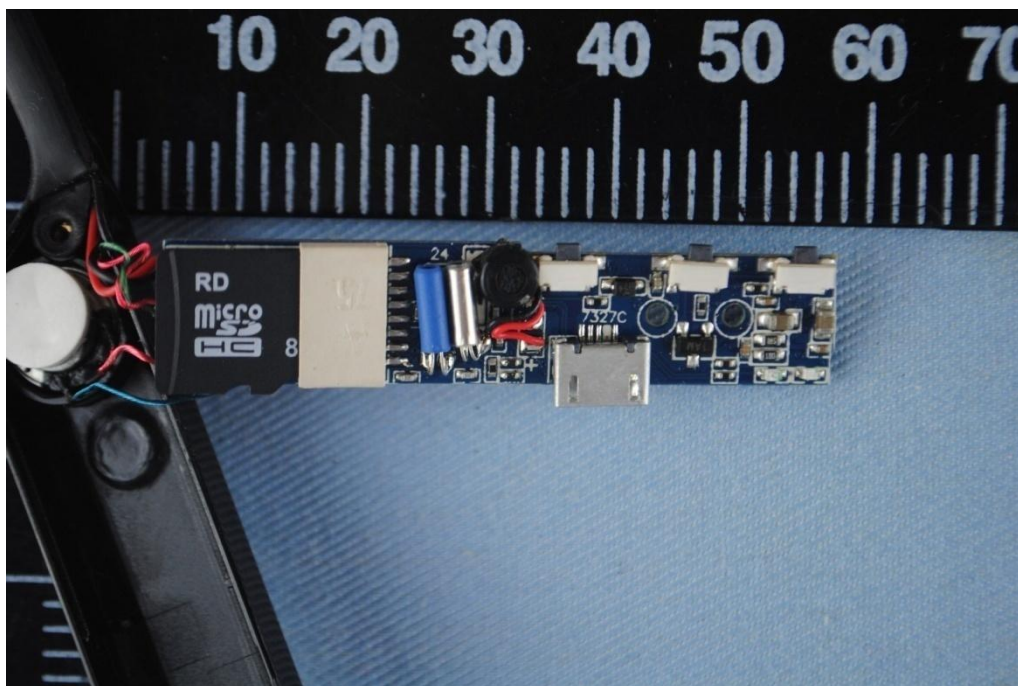
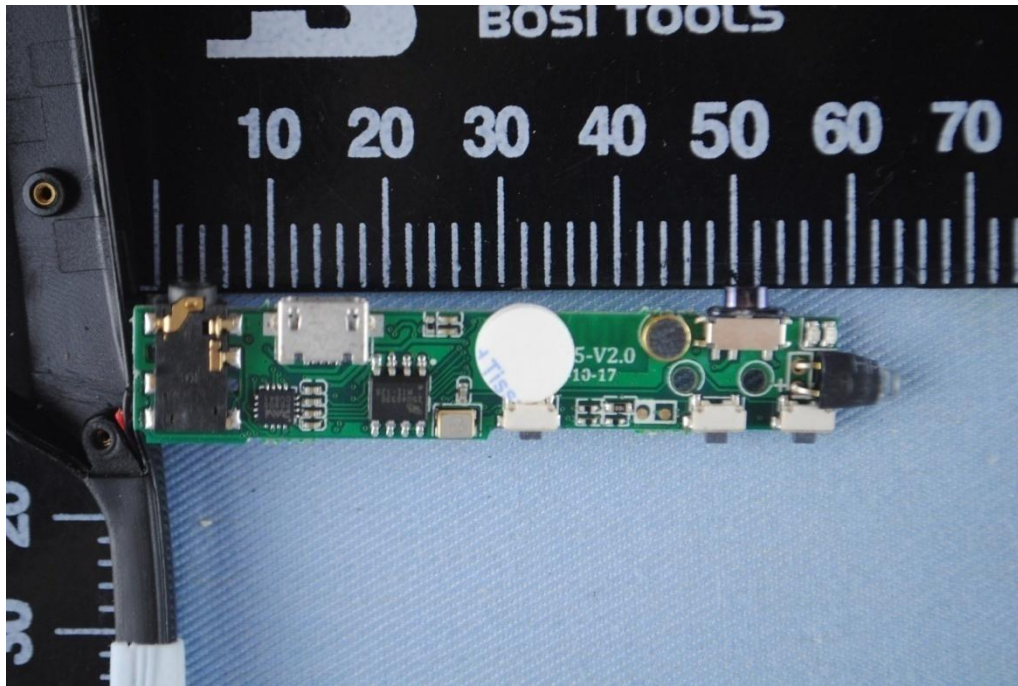
Main board component side







Main board solder side



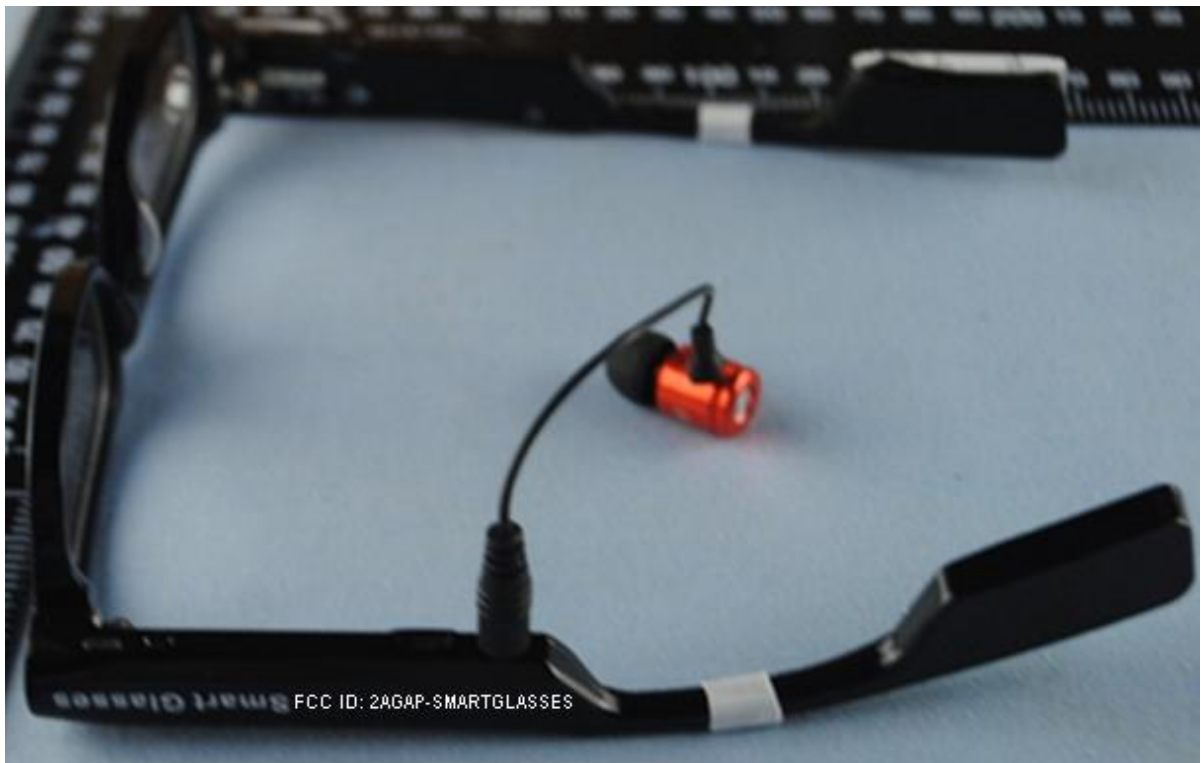
## 7. FCC ID Label

**FCC ID: 2AGAP-SMARTGLASSES**

The following note shall be conspicuously placed in the users manual: “**Operation is subject to the following two conditions: (1) this device may not cause interference, and (2) this device must accept any interference, including interference that may cause undesired operation of this device.**”

The Label must not be a stick-on paper label. The Label on these products must be permanently affixed to the product and readily visible at the time of purchase and must last the expected lifetime of the equipment not be readily detachable.

### Proposed Label Location on EUT



## 8. Test Equipment

The following test equipments were used during the radiated & conducted emission test:

Equipment/ Facilities	Manufacturer	Model #	Serial No.	Due Date
Turntable	Innco systems GmbH	CT-0801	KMO-SZ114	NCR
Antenna Tower	Innco systems GmbH	MM4000-PP	KMO-SZ115	NCR
Controller	Innco systems GmbH	CO2000	KMO-SZ116	NCR
Pre-Amplifier	Agilent	87405C	KMO-SZ155	Dec.6, 2015
Pre-Amplifier	Com-Power	PAM-840	KMO-SZ156	Dec.6, 2015
Horn Antenna	Com-Power	AH-840	KMO-SZ157	Dec.6, 2015
EMI Test Receiver	Rohde & Schwarz	ESPI7	KMO-SZ002	June 27, 2016
Spectrum Analyzer	Rohde & Schwarz	FSP40	KMO-SZ003	June 27, 2016
Signal Generator	FLUKE	PM5418+Y/C	KMO-SZ020	May 27, 2016
Loop Antenna	Rohde & Schwarz	HFH2-Z2	KMO-SZ004	August 19, 2018
Trilog-Super Broadband Antenna	SCHWARZBECK	VULB9161	KMO-SZ005	August 27, 2018
Trilog-Super Broadband Antenna	SCHWARZBECK	VULB9161	KMO-SZ006	August 19, 2018
Broad-Band Horn Antenna	SCHWARZBECK	BBHA 9120D	KMO-SZ007	August 19, 2018
Broad-Band Horn Antenna	SCHWARZBECK	BBHA 9120D	KMO-SZ008	August 19, 2018
AMN	Rohde & Schwarz	ESH3-Z5	KMO-SZ009	June 27, 2016
Pulse Limiter	SCHWARZBECK	VTSD 9561-F	KMO-SZ077	Nov.29, 2015
ISN	SCHWARZBECK	NTFM 8158 CAT3	KMO-SZ070	Nov.19, 2015
ISN	SCHWARZBECK	NTFM 8158 CAT5	KMO-SZ071	Nov.19, 2015
ISN	SCHWARZBECK	NTFM 8158 CAT6	KMO-SZ072	Nov.19, 2015
KMO Shielded Room	KMO	KMO-001	KMO-SZ036	NCR
Coaxial Cable with N-Connectors	SCHWARZBECK	AK9515H	KMO-SZ037	Sep.18, 2016
AC Power Source / Analyzer	Agilent	6813B	KMO-SZ166	July 22, 2016
Power Meter	Rohde & Schwarz	OSP-B157	KMO-HK015	Nov.6, 2015
Digital Radio Communication Tester	Rohde & Schwarz	CMD60	KMO-SZ169	April 10, 2016
Universal Radio Communication Tester	Rohde & Schwarz	CMU200	KMO-SZ170	April 10, 2016
Regulatory Test System 30 MHz to 40 GHz	Rohde & Schwarz	TS8997	KMO-HK015	Nov.6, 2015
Program Control Telephone Exchanger	Excelltel	CDX8000-M	KMO-SZ221	NCR
3m Anechoic Chamber	KMO	KMO-3AC	KMO-3AC-1	Nov.12, 2016
Temperature Chamber	TABAI	PSL-4GTW	N/A	Feb.10, 2016