



ShenZhen City FeiMin Technology CO., LTD.

SPECIFICATION FOR APPROVED

CUSTOMER: _____ Hunan Qiande Industry Co., Ltd _____

PRODUCTS: _____ Built-in 2.4G antenna _____

PART NO: _____

Spec. : _____ FM-S2249-2064-BT _____

Data: _____ 2022. 10. 21 _____

SUPPLIER		
PREPARED BY	CHECKED BY	APPROVED BY
YangXuan	Xia Xingxi	Ma Doggdong

CUSTOMER		
ACCEPTED BY	CHECKED BY	APPROVED BY

REMARK: Please send us one (or copy) of this approval with stamp after accepting, other copies filed by the customer.

ADD: Room 303, Building C, Hengnan one Road, Gushu community, Xixiang Street, Bao'an District, Shenzhen City

Tel: 0755-23035723

Fax: 0755-23036702

E-mail: ant001@fmant.cn

HTTP: www.fmant.cn

Table of contents

1. Project Information.....	4
1.1. Appearance and Dimensions	4
2. Electrical Characteristics	5
2.1. Test Environment Conditions	5
2.2. Measurement method	5
2.2.1. VSWR.....	5
2.2.2. Log Mag	6
2.3. Efficiency and Gain	6
2.3.1. Test system	6
2.3.2. No-source test data	7
2.3.3. Antenna Radiation Pattern	7
3. Notes	8
4. Product packaging specification.....	8

Revision history

Version	date	state
A1	2022-10-21	First edition

change content:

First change:

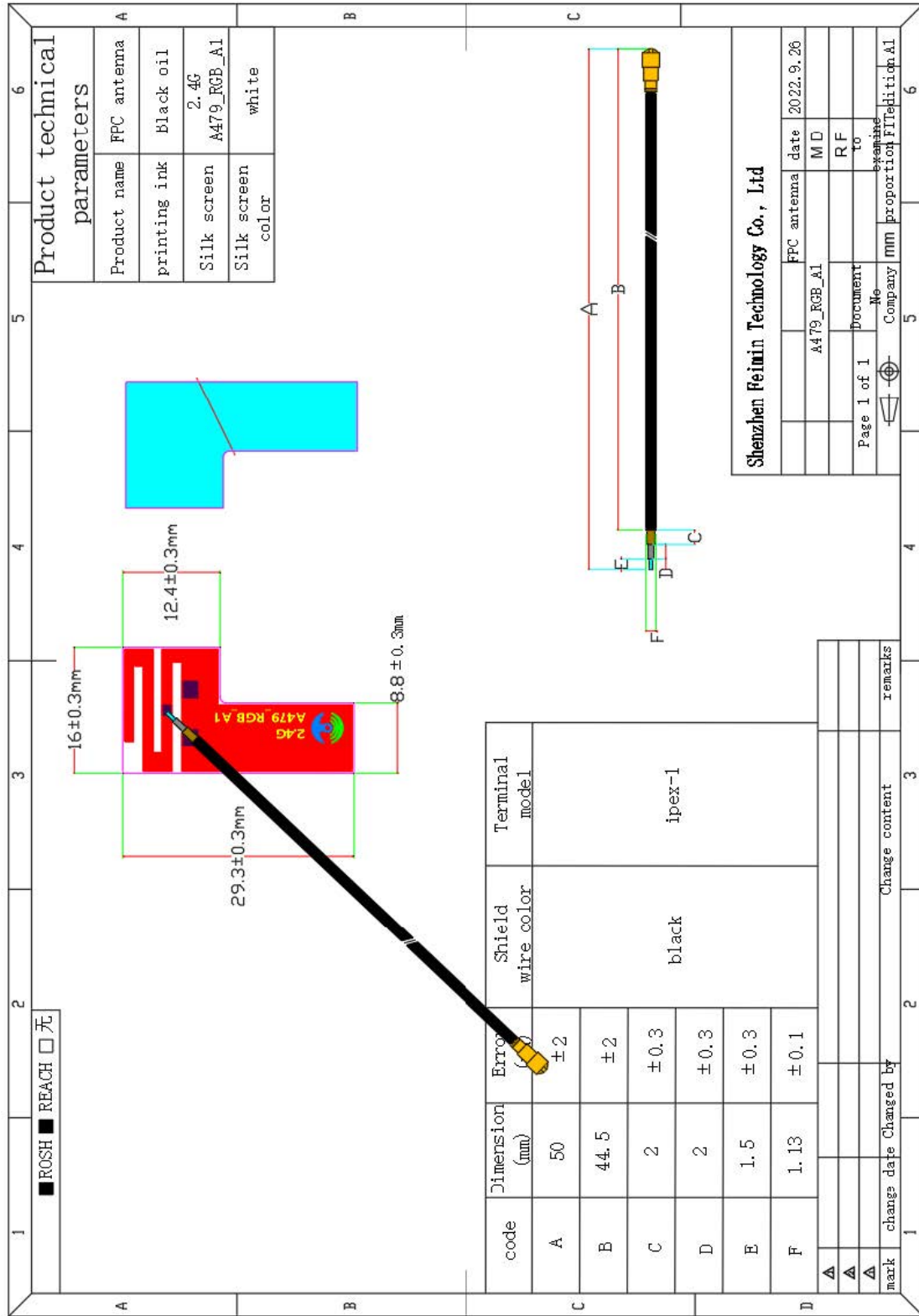
Before the change: (If necessary, please add the corresponding picture, the change details should be clearly described here)

After the change: (If necessary, please add the corresponding picture, the change details should be clearly described here)

ANTENNA SPECIFICATION

1. Project Information

1.1. Appearance and Dimensions



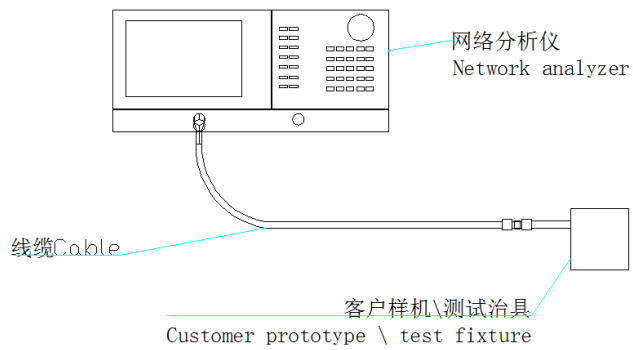
ANTENNA SPECIFICATION

2. Electrical Characteristics

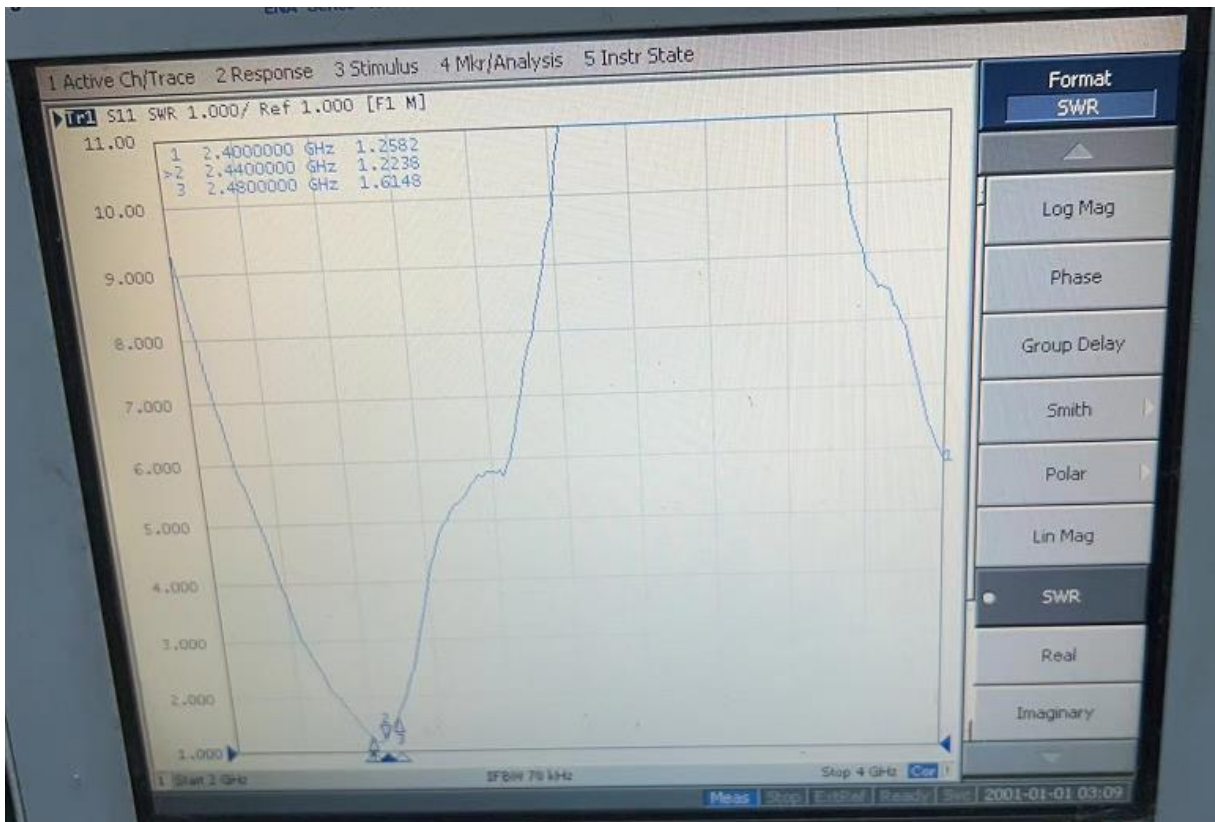
2.1. Test Environment Conditions

Temperature	Ordinary Temperature (5 to 35°C)
Humidity	Ordinary Humidity (25 to 85% RH)

2.2. Measurement method

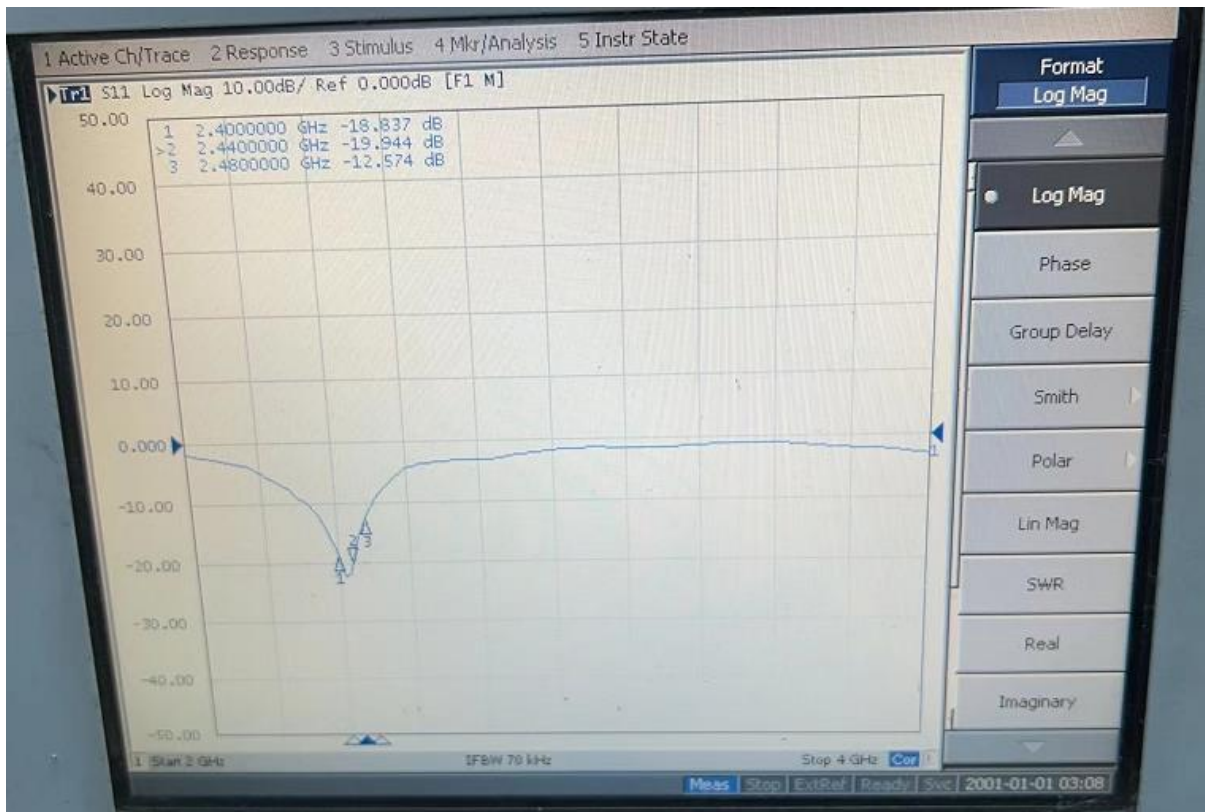


2.2.1. VSWR



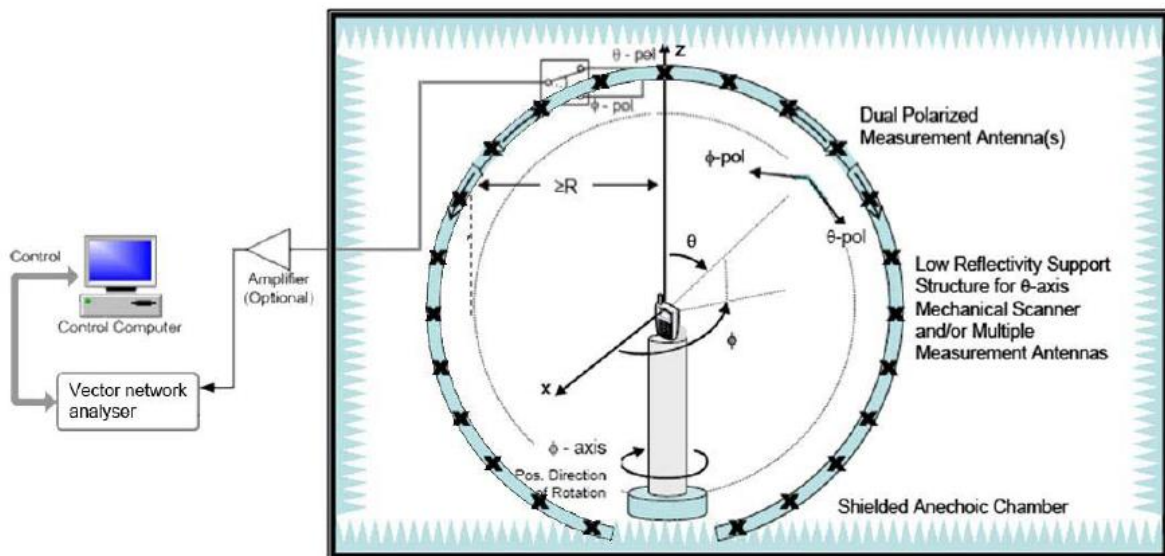
ANTENNA SPECIFICATION

2.2.2. Log Mag



2.3. Efficiency and Gain

2.3.1. Test system



ANTENNA SPECIFICATION

2.3.2. No-source test data

Frequency (MHz)	Gain (dBi)	Efficiency (%)
2400 MHz	1.07	37.2
2410 MHz	1.11	38.57
2420 MHz	1.25	39.66
2430 MHz	1.13	38.89
2440 MHz	1.26	39.03
2450 MHz	1.35	40.94
2460 MHz	1.33	40.79
2470 MHz	1.27	39.33
2480 MHz	1.18	38.55
2490 MHz	1.15	38.36
2500 MHz	1.22	39.58

2.3.3. Antenna Radiation Pattern

