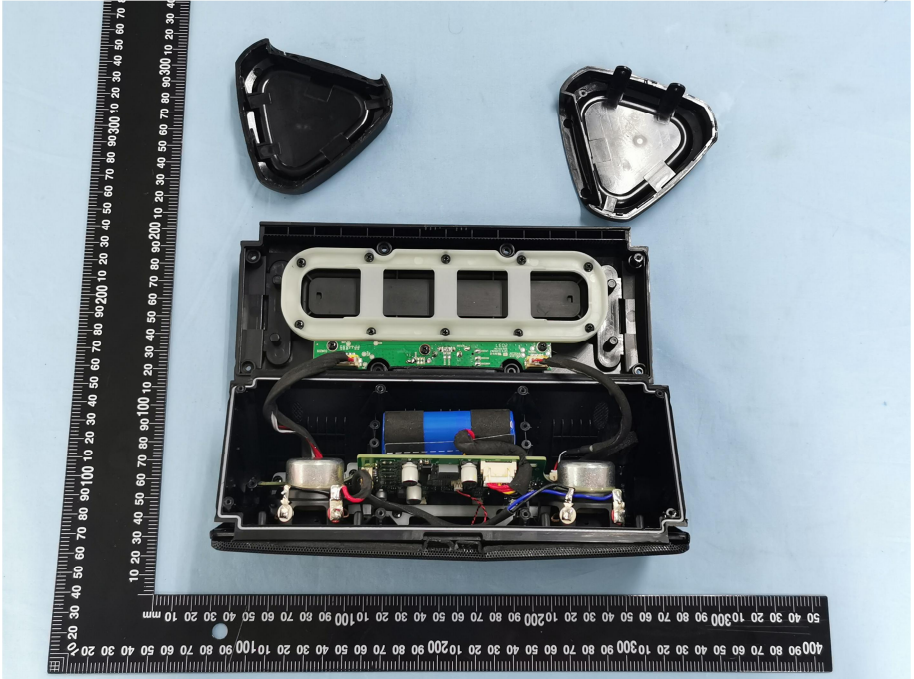
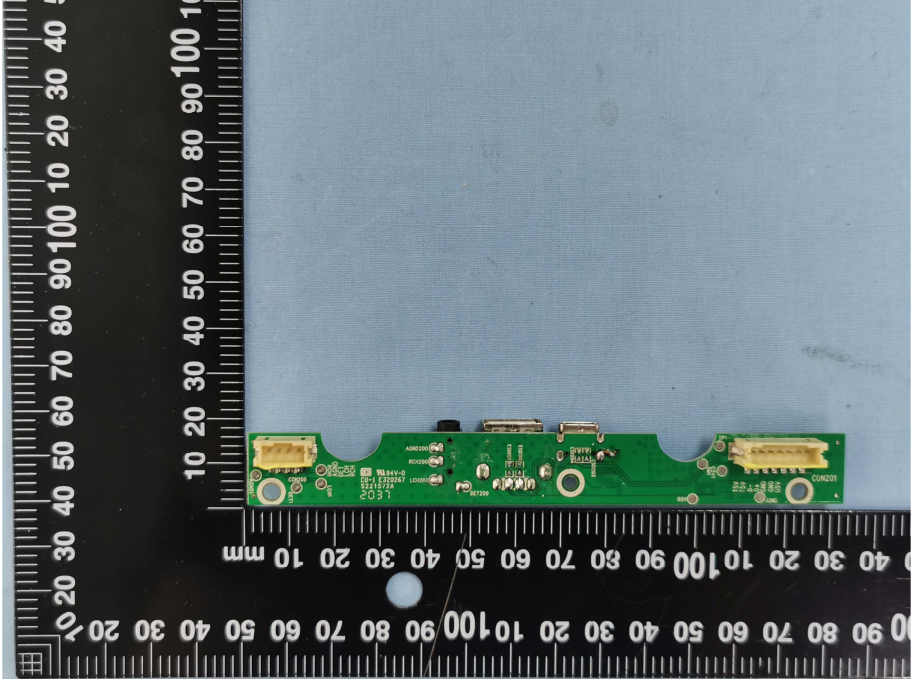
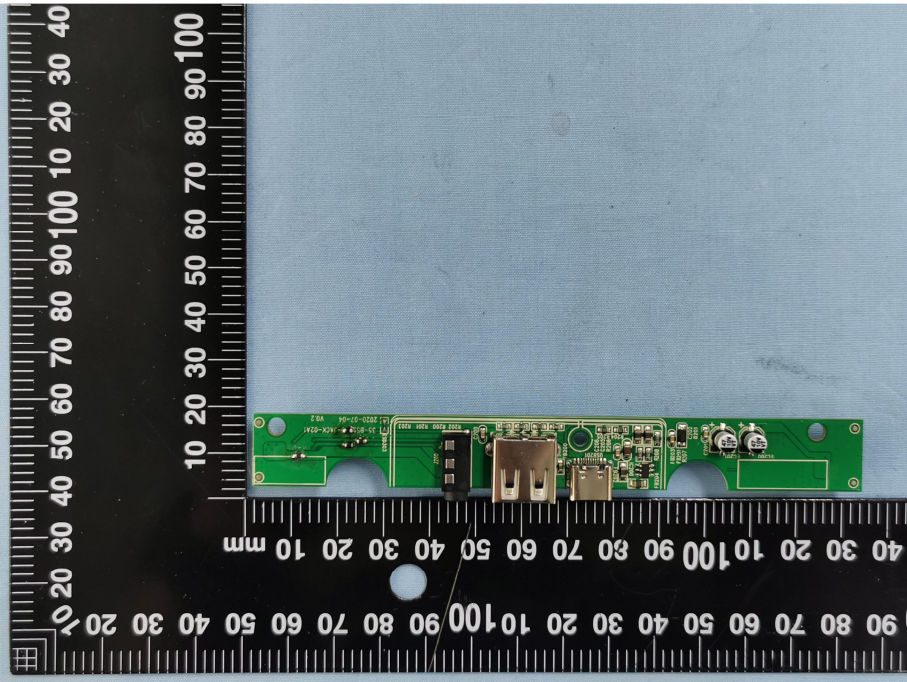
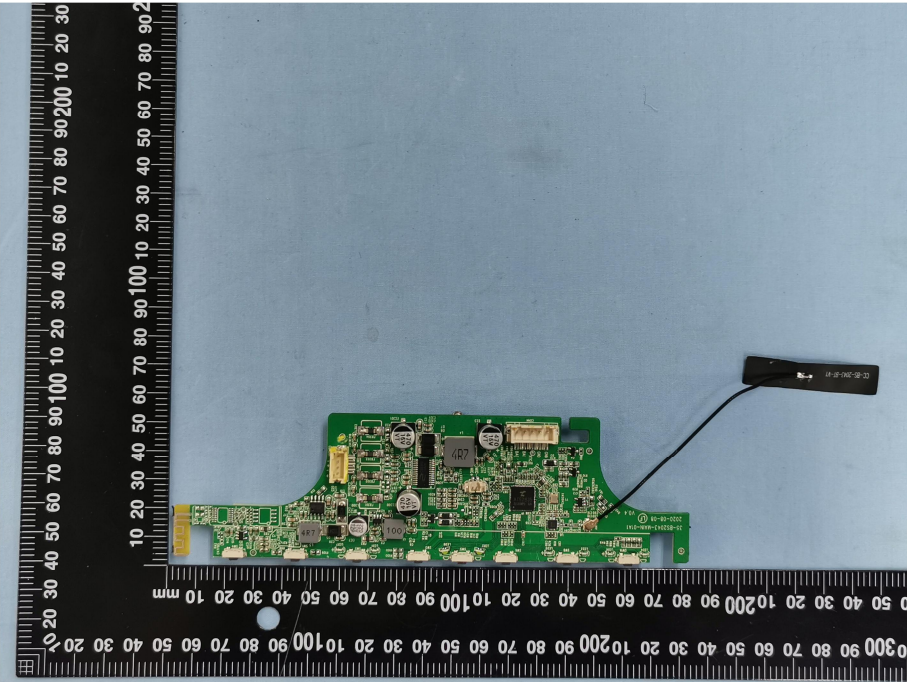
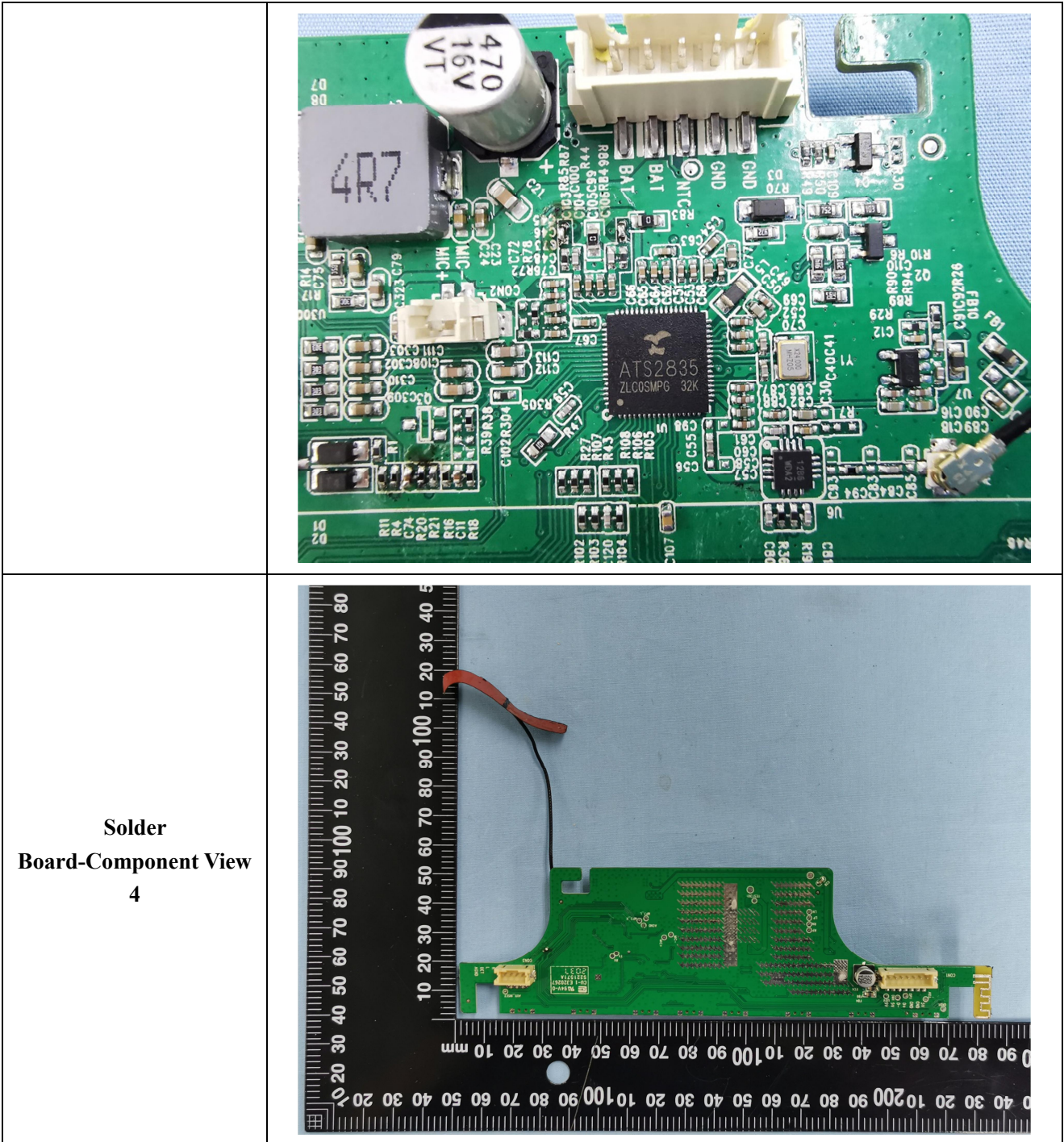
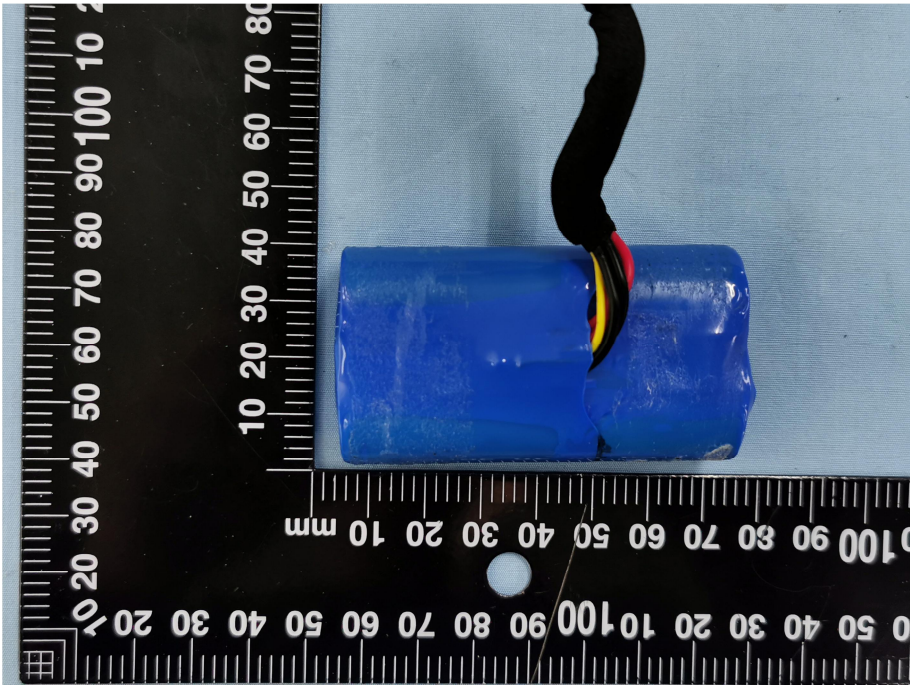
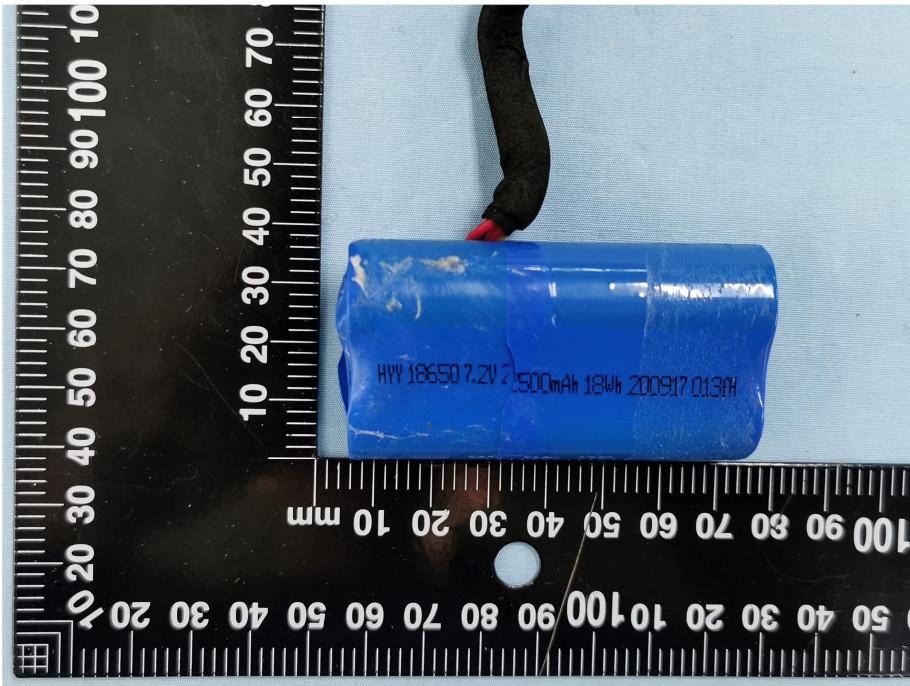


EXHIBIT 3 - EUT INTERNAL PHOTOGRAPHS

<p>EUT Housing and Board View 1</p>	 <p>This photograph shows the internal components of the EUT housing. The top cover is removed, revealing a green printed circuit board (PCB) with various electronic components, including a battery, capacitors, and connectors. A black plastic housing is visible around the board. A ruler is placed vertically on the left side of the assembly for scale, showing measurements in millimeters.</p>
<p>Solder Board-Component View 1</p>	 <p>This photograph provides a close-up view of the solder board component. The board is green and features several components, including a connector, a capacitor, and a resistor. A ruler is placed vertically on the left side of the board for scale, showing measurements in millimeters.</p>

<p style="text-align: center;">Solder Board-Component View 2</p>	 <p>A photograph of a green printed circuit board (PCB) component, labeled 'Solder Board-Component View 2'. The board is rectangular and features several components, including a USB-A port, a USB-B port, and various electronic components like capacitors and resistors. It is placed on a black background with a white ruler for scale. The ruler shows measurements in millimeters, with the board's length being approximately 100 mm and its width around 20 mm.</p>
<p style="text-align: center;">Solder Board-Component View 3</p>	 <p>A photograph of a green printed circuit board (PCB) component, labeled 'Solder Board-Component View 3'. The board is irregularly shaped and features various electronic components, including capacitors, resistors, and a connector. A black ribbon cable is attached to the board. It is placed on a black background with a white ruler for scale. The ruler shows measurements in millimeters, with the board's length being approximately 100 mm and its width around 20 mm.</p>



<p style="text-align: center;">Solder Board-Component View 5</p>	 <p>A photograph showing a blue cylindrical component with a black cable attached. The component is positioned horizontally. A black ruler with white markings is placed below the component for scale. The ruler shows markings from 0 to 100 mm. The component is approximately 60 mm long and 15 mm wide. The black cable is attached to the top of the component.</p>
<p style="text-align: center;">Solder Board-Component View 6</p>	 <p>A photograph showing a blue cylindrical component with a black cable attached. The component is positioned horizontally. A black ruler with white markings is placed below the component for scale. The ruler shows markings from 0 to 100 mm. The component is approximately 60 mm long and 15 mm wide. The black cable is attached to the top of the component. The component has some text printed on it: "HW 18650 7.2V 2500mAh 18Wh 200917 0131H".</p>

