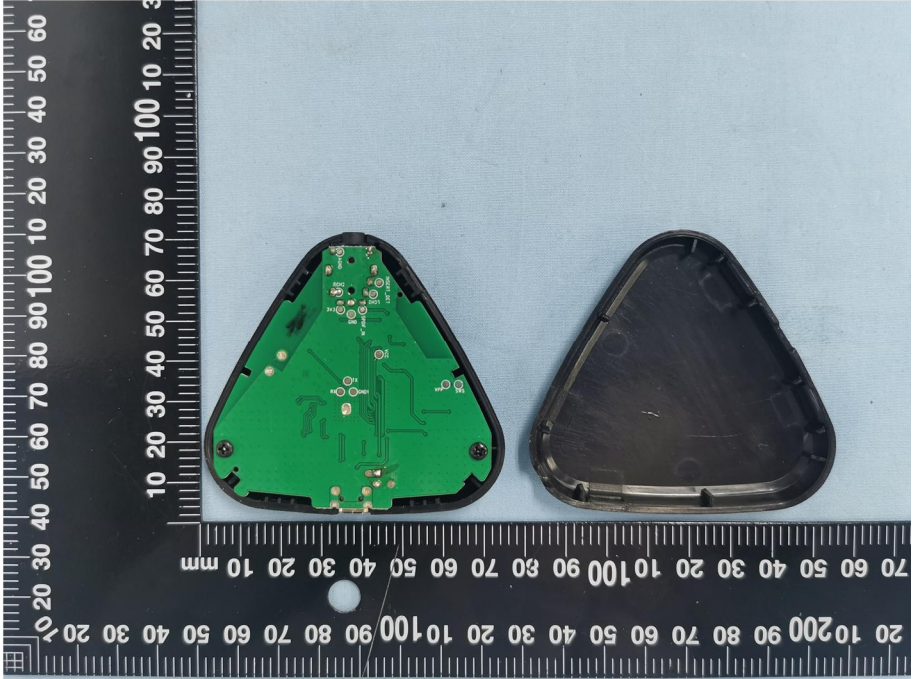
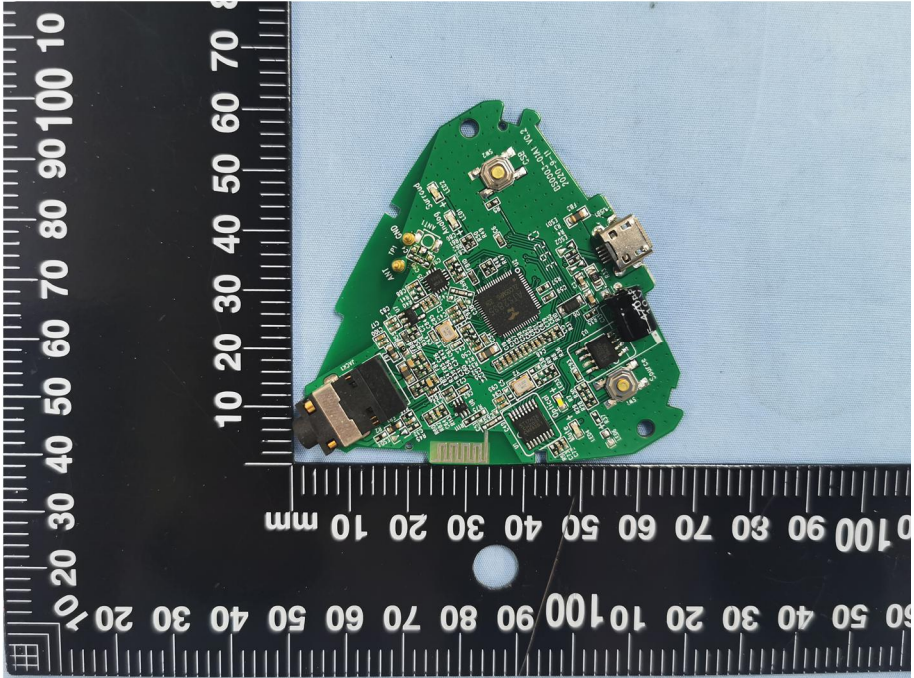
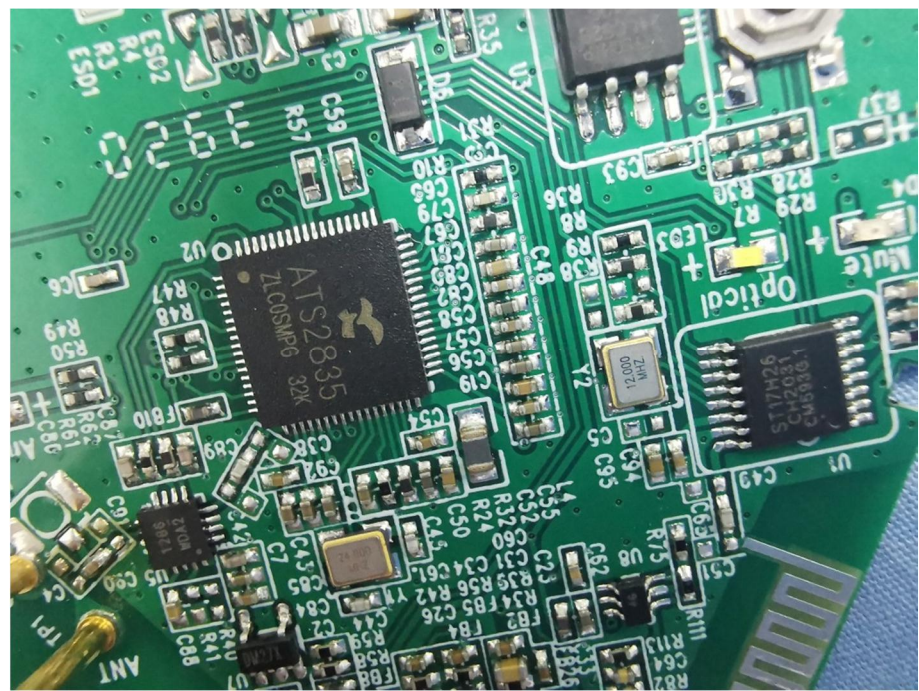
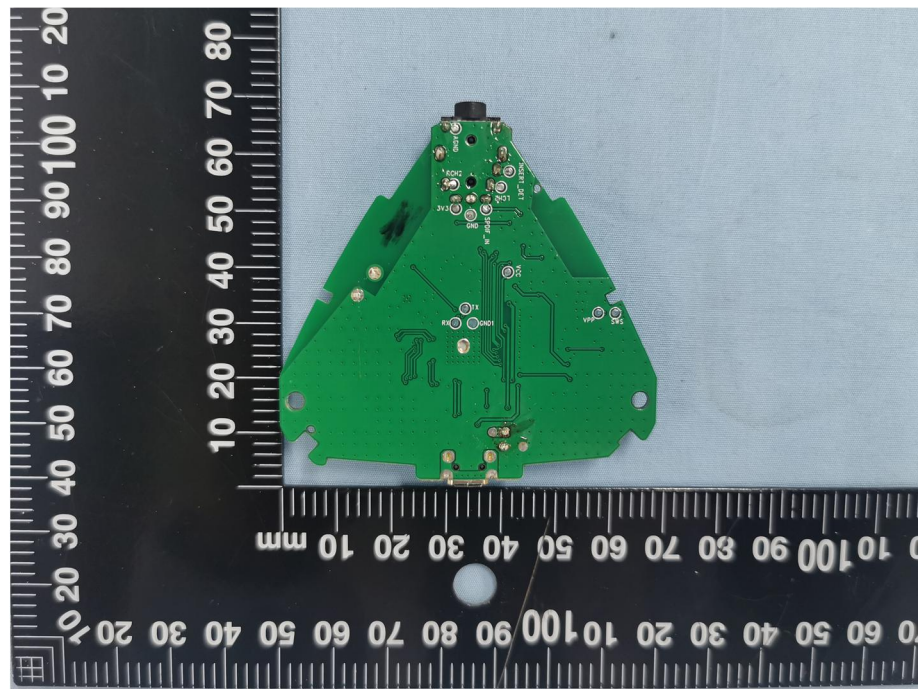



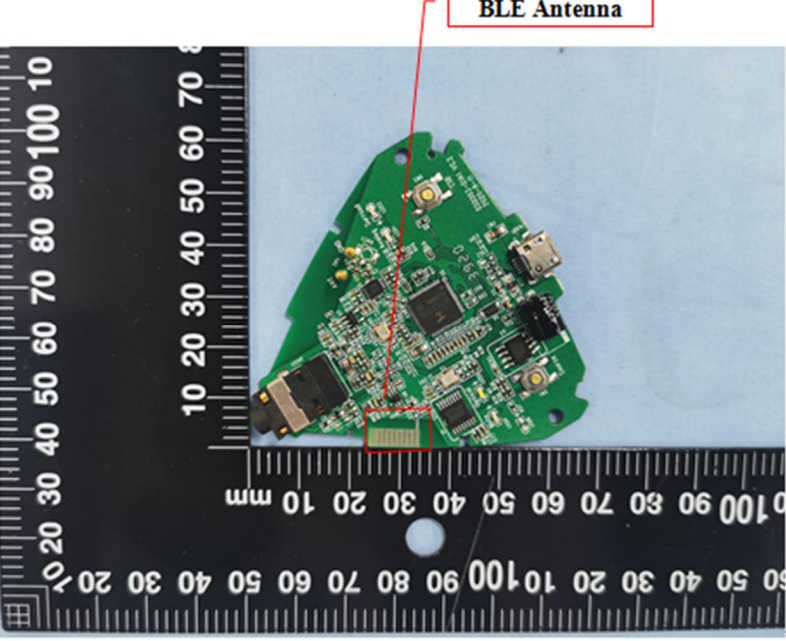
EXHIBIT 3 - EUT INTERNAL PHOTOGRAPHS

<p>EUT Housing and Board View 1</p>	 <p>A photograph showing the internal components of an EUT. On the left is a green printed circuit board (PCB) with various electronic components, including a microcontroller, capacitors, and connectors. On the right is a black, triangular-shaped plastic housing. Both components are placed on a black surface with a white ruler for scale. The ruler shows measurements in millimeters, with markings every 10 mm and sub-markings every 1 mm. The PCB is approximately 100 mm wide and 100 mm high. The housing is approximately 100 mm wide and 100 mm high.</p>
<p>Solder Board-Component View 1</p>	 <p>A close-up photograph of the green PCB from the previous view. The board is densely packed with electronic components, including a microcontroller, capacitors, resistors, and connectors. The components are soldered onto the board. The board is placed on a black surface with a white ruler for scale. The ruler shows measurements in millimeters, with markings every 10 mm and sub-markings every 1 mm. The board is approximately 100 mm wide and 100 mm high.</p>



Solder
Board-Component View
2



<p>Antenna View</p>	 <p>The image shows the interior of a black plastic device casing. A ruler is placed to the left for scale. A red box labeled "EDR Antenna" points to a small antenna component on the casing. Another red box points to a component labeled "CS-80000313".</p>
<p>Antenna View</p>	 <p>The image shows a green printed circuit board (PCB) with various electronic components. A ruler is placed to the left for scale. A red box labeled "BLE Antenna" points to a specific antenna component on the board.</p>