
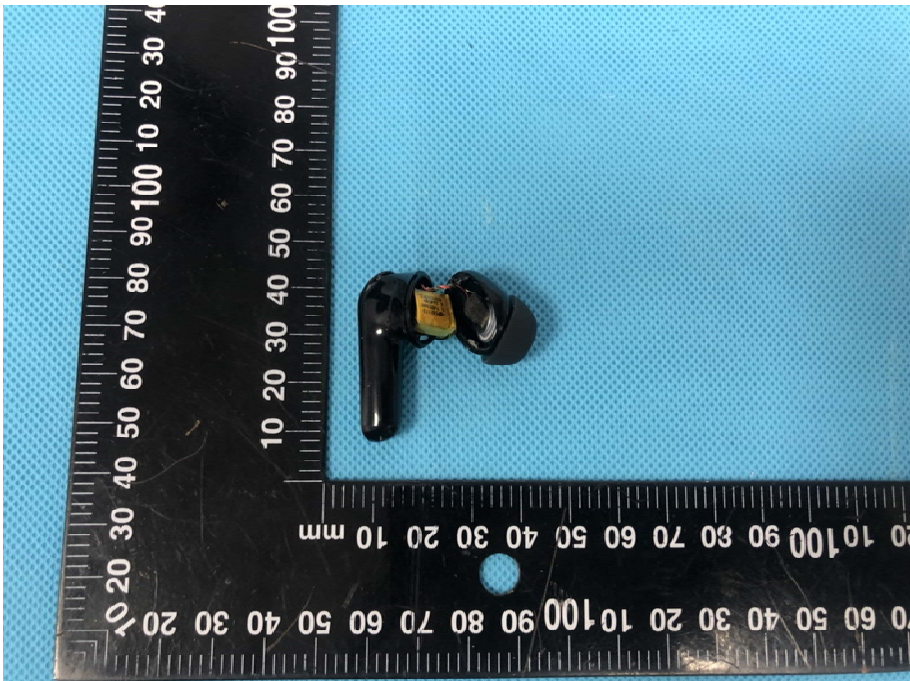

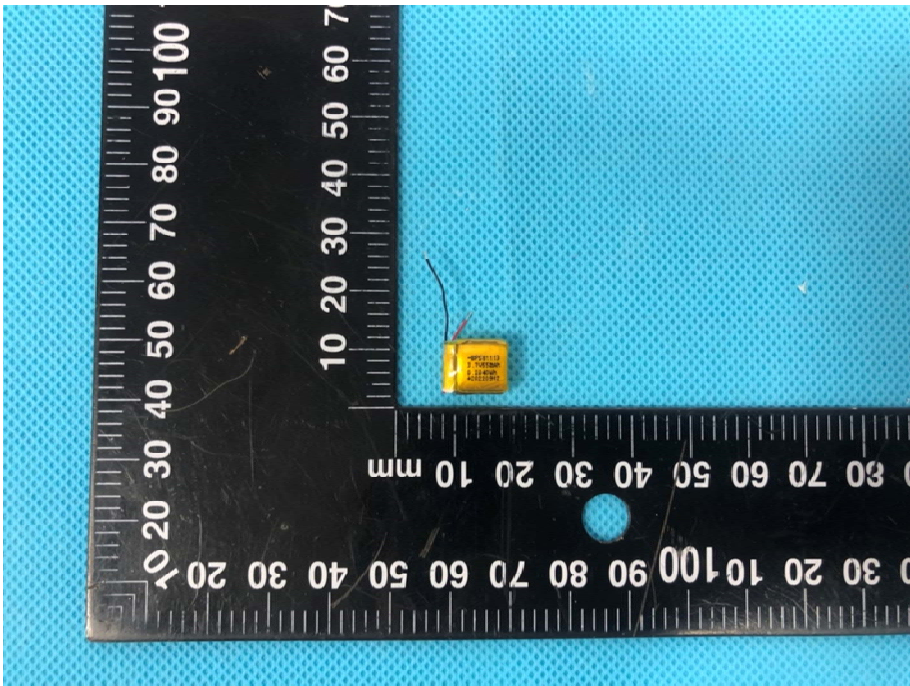
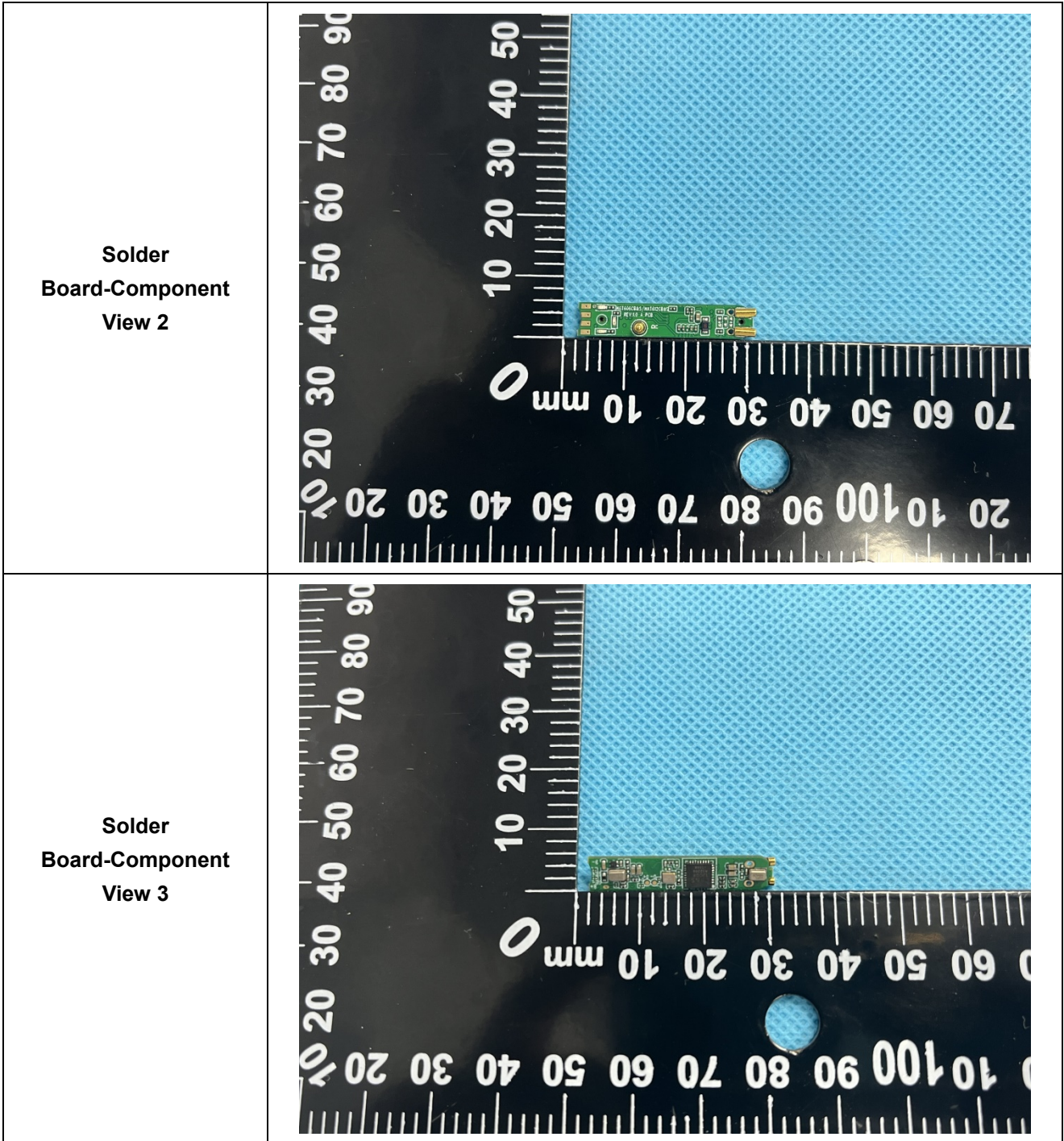


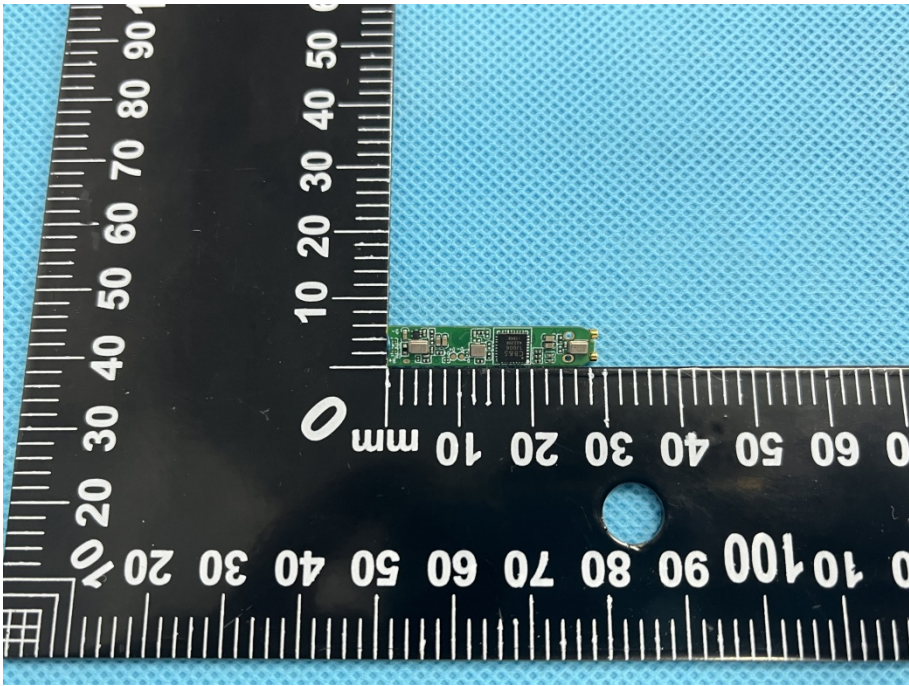
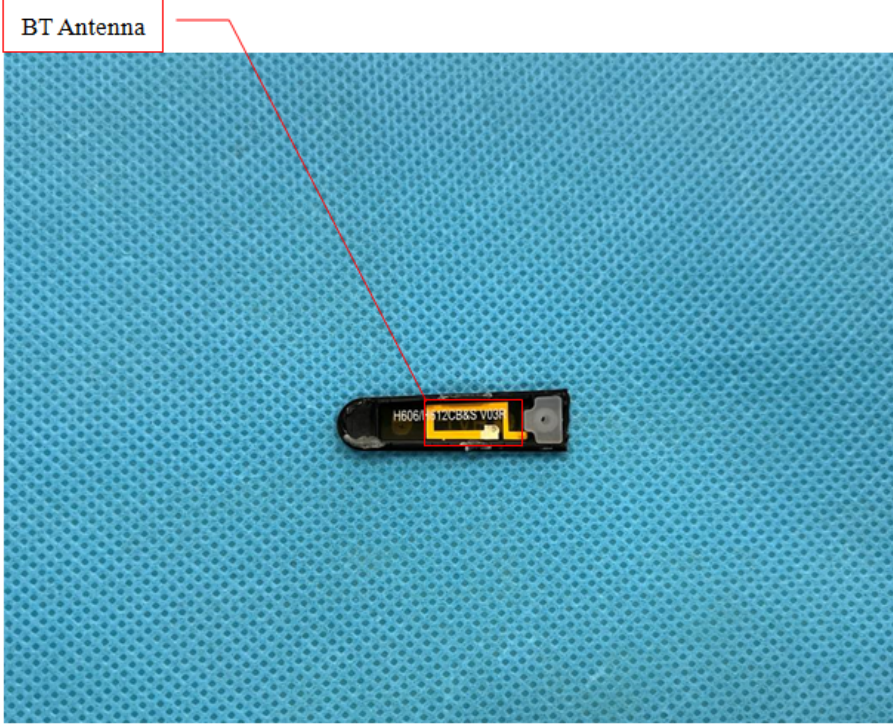
EXHIBIT 3 - EUT INTERNAL PHOTOGRAPHS

<p>EUT Housing and Board View 1</p>	 <p>This photograph shows the internal components of the EUT housing. On the left is the black plastic housing, and on the right is the green printed circuit board (PCB) with various electronic components. A small yellow battery is also visible. The items are placed on a blue textured surface next to a black ruler with white markings for scale. The ruler shows measurements in millimeters, with the housing and board spanning approximately 30 to 40 mm.</p>
<p>EUT Housing and Board View 2</p>	 <p>This photograph provides a different perspective of the EUT housing and board. The black plastic housing is shown from a side angle, revealing the internal PCB and the yellow battery. The components are positioned on a blue textured surface next to a black ruler with white markings. The ruler indicates a length of approximately 30 mm for the housing and board assembly.</p>

<p>EUT Housing and Board View 3</p>	 A photograph showing a black plastic EUT housing and a yellow component on a blue perforated board. A black ruler with white markings is placed below the components for scale. The ruler shows measurements in millimeters, with markings for 10, 20, 30, 40, 50, 60, 70, 80, 90, and 100 mm. The yellow component is approximately 10 mm wide and 5 mm high. The black housing is L-shaped and fits around the component.
<p>Solder Board-Component View 1</p>	 A photograph showing a yellow component on a blue perforated board. A black ruler with white markings is placed below the component for scale. The ruler shows measurements in millimeters, with markings for 10, 20, 30, 40, 50, 60, 70, 80, 90, and 100 mm. The yellow component is approximately 10 mm wide and 5 mm high. The component has two thin wires extending from it.



<p>Solder Board-Component View 4</p>	
<p>Solder Board-Component View 5</p>	

<p>Solder Board-Component View 6</p>	 <p>A photograph showing a small green printed circuit board (PCB) component mounted on a blue textured surface. A black ruler with white markings is placed below the component for scale. The ruler shows measurements in millimeters, with markings for 0, 10, 20, 30, 40, 50, 60, 70, 80, and 90. The component is positioned between the 10 mm and 20 mm marks.</p>
<p>Antenna View</p>	 <p>A photograph of a BT antenna component. A red box labeled "BT Antenna" is positioned at the top left, with a red line pointing to the antenna. The antenna is a small, black, rectangular component with a yellow label that reads "H6061 12C85S V08F". It is placed on a blue textured surface.</p>