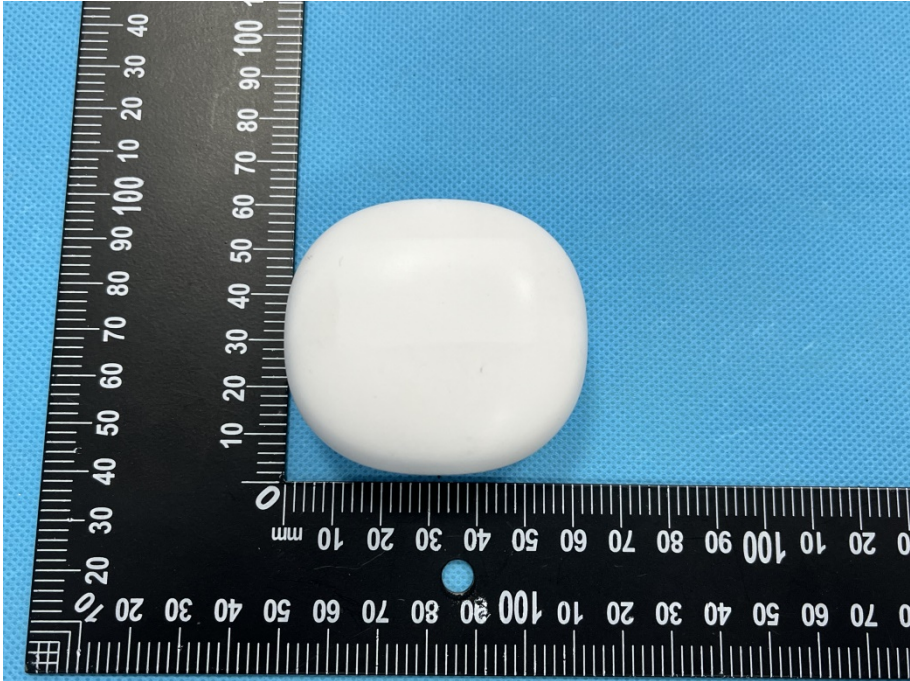
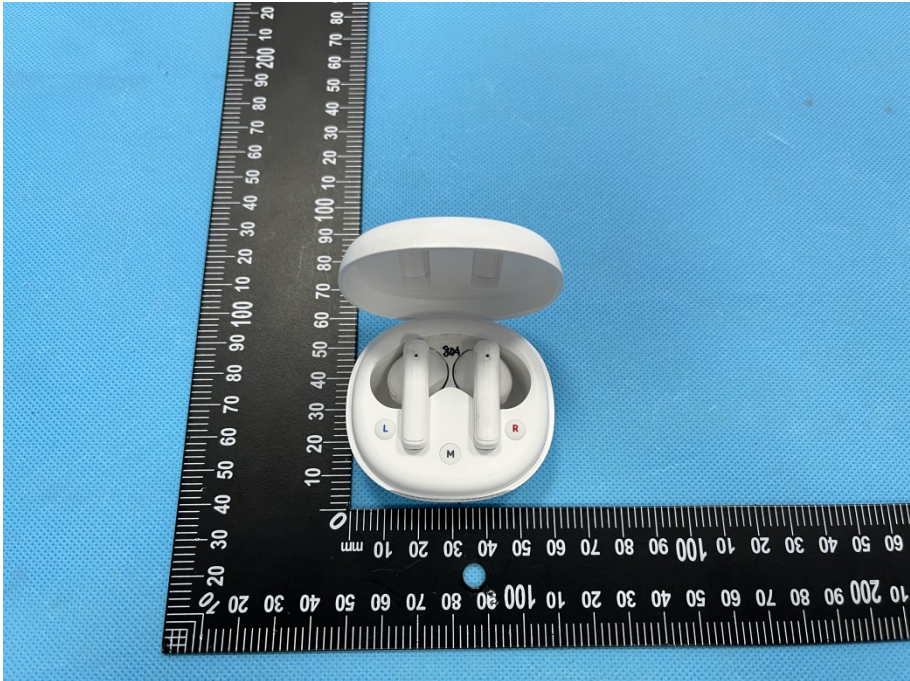

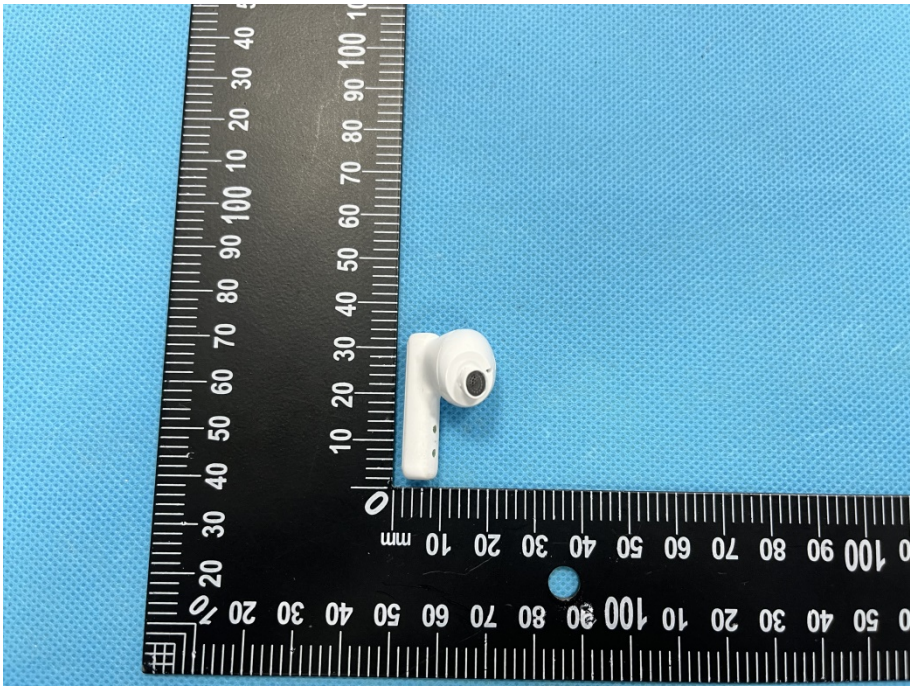
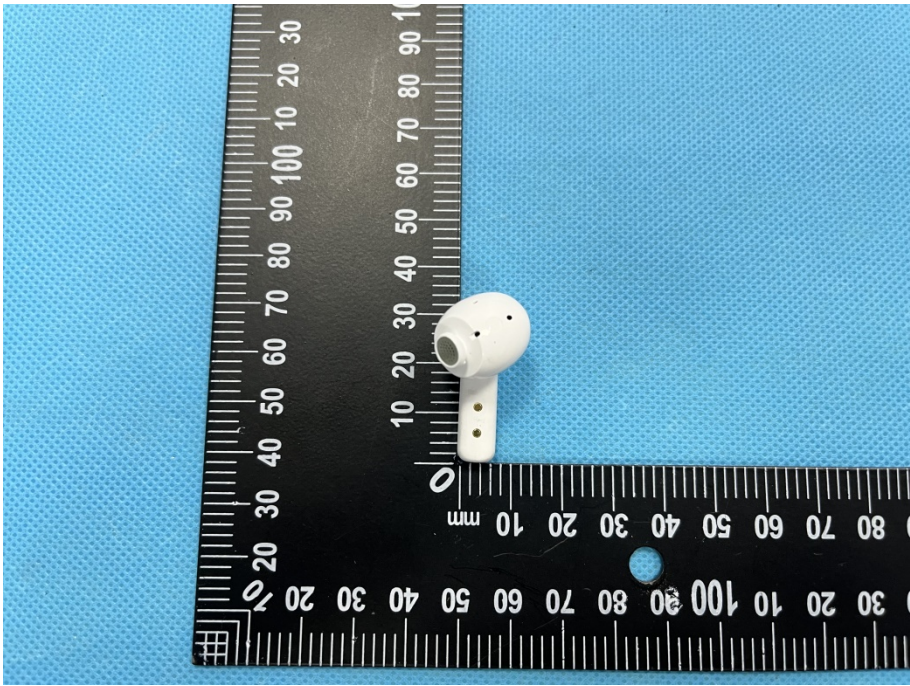
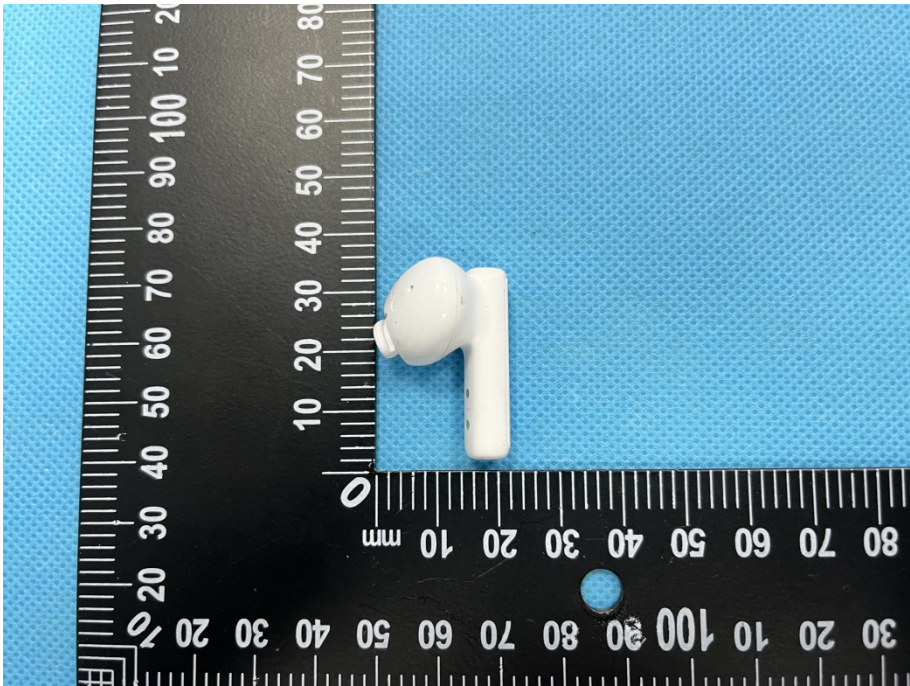


## EXHIBIT 2 - EUT EXTERNAL PHOTOGRAPHS

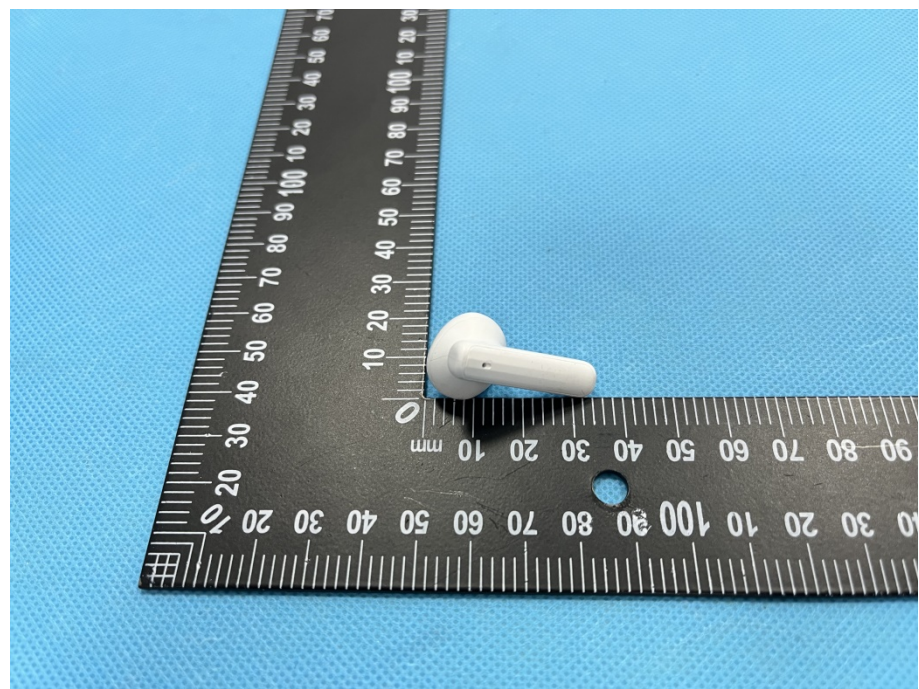
<p><b>EUT View 1</b></p>	 A photograph showing a white, spherical external unit (EUT) placed on a blue textured surface. A black ruler with white markings is positioned vertically to the left of the unit, showing measurements in millimeters. The unit is approximately 30 mm in diameter. A small blue dot is visible on the ruler at the 40 mm mark.
<p><b>EUT View 2</b></p>	 A photograph showing an open white case containing two white earbuds. The case is placed on a blue textured surface. A black ruler with white markings is positioned vertically to the left of the case, showing measurements in millimeters. The case is approximately 30 mm in diameter. The earbuds are labeled 'L', 'R', and 'M'. A small blue dot is visible on the ruler at the 40 mm mark.

<p><b>EUT View 3</b></p>	
<p><b>EUT View 4</b></p>	

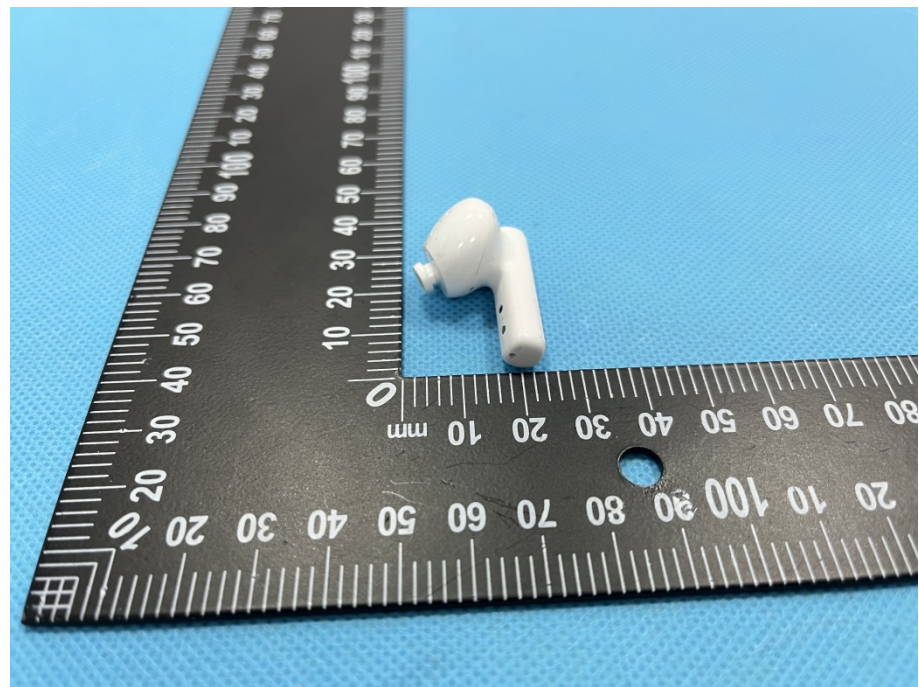


<p><b>EUT View 5</b></p>	
<p><b>EUT View 6</b></p>	


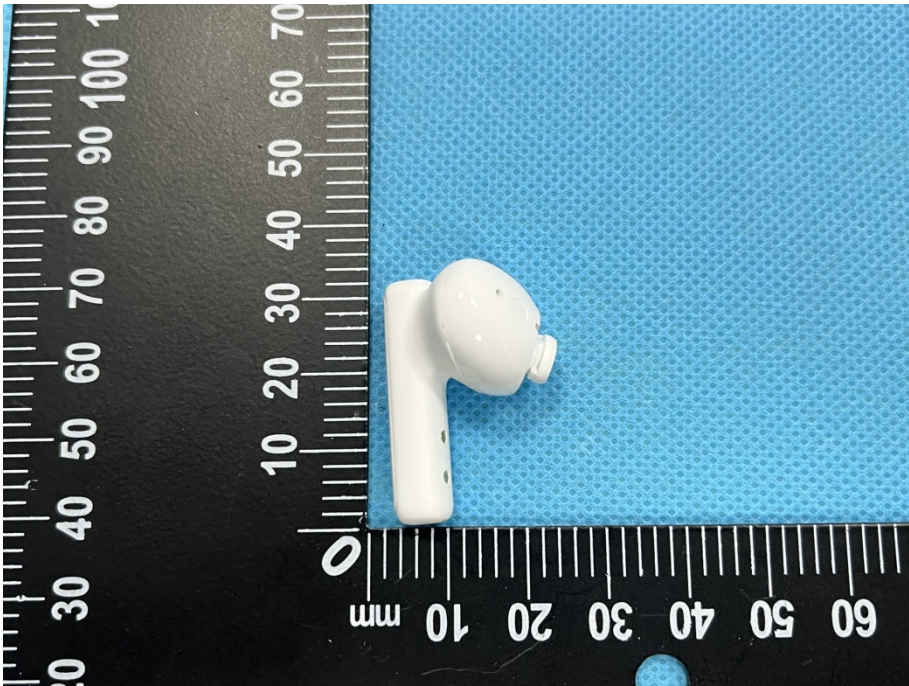
**EUT View 7**

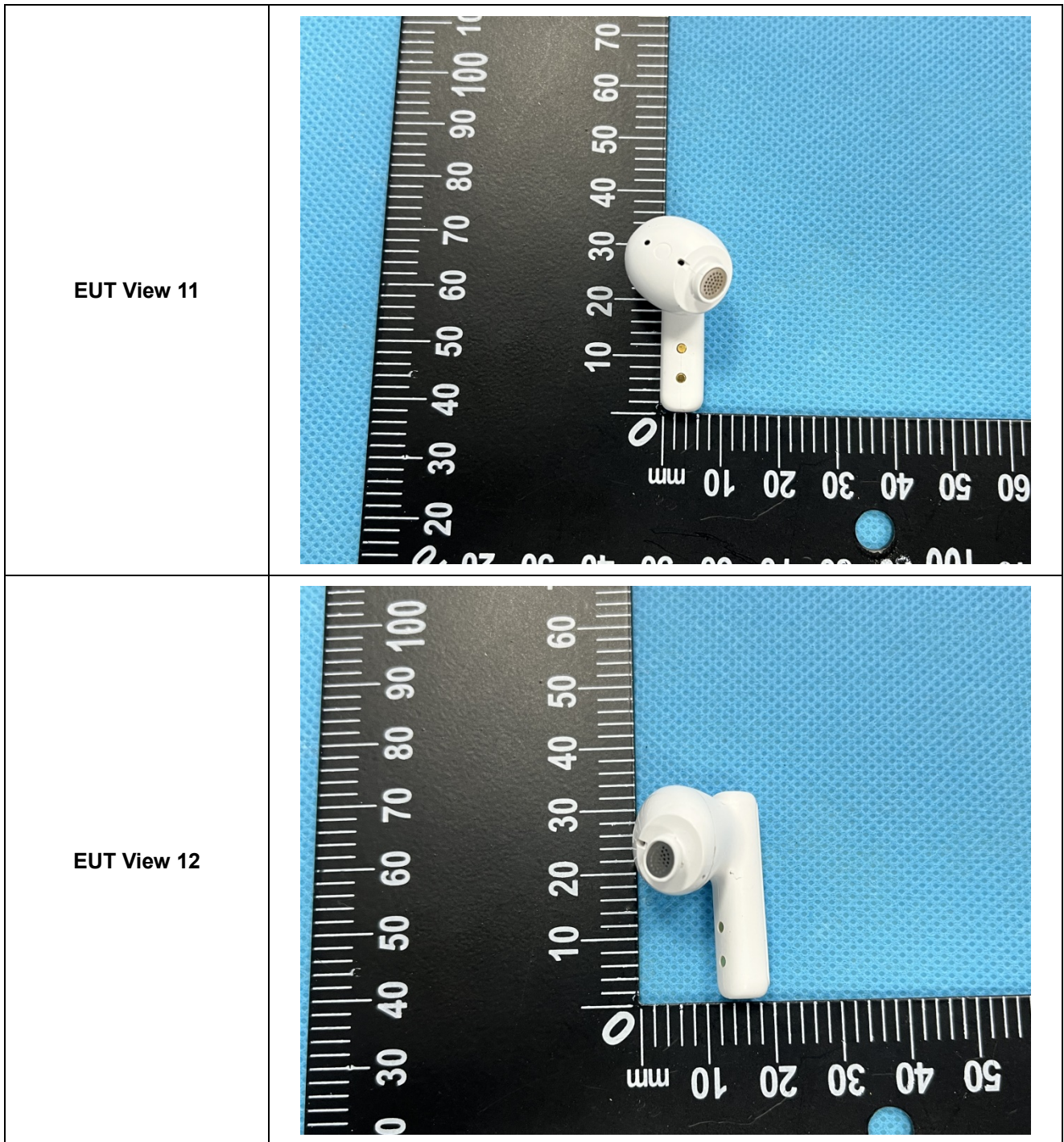


**EUT View 8**






<p><b>EUT View 9</b></p>	 A photograph showing a white ceramic component, likely a capacitor or resistor, placed on a blue textured surface. A black ruler with white markings is positioned vertically to the left of the component. The component is oriented vertically, with its top edge near the 10 mm mark on the ruler. The ruler has markings every 1 mm, with larger numbers every 10 mm (0, 10, 20, 30, 40, 50, 60, 70, 80, 90, 100).
<p><b>EUT View 10</b></p>	 A photograph showing the same white ceramic component from a different perspective. The component is oriented horizontally, with its left edge near the 10 mm mark on the ruler. The ruler is positioned vertically to the left of the component, with markings every 1 mm and larger numbers every 10 mm (0, 10, 20, 30, 40, 50, 60, 70, 80, 90, 100).





<p><b>EUT View 13</b></p>	
<p><b>EUT View 14</b></p>	