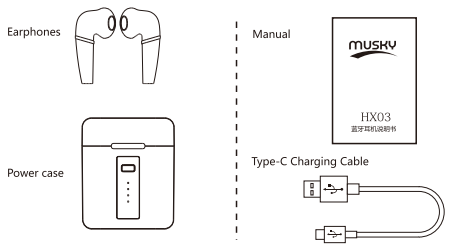




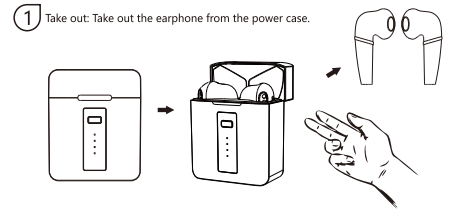
Wireless Headset HX03

User Manual

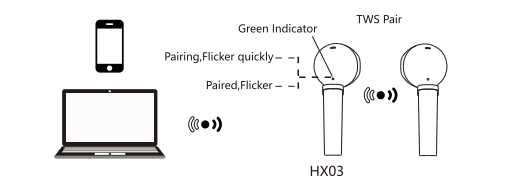
Package Contents



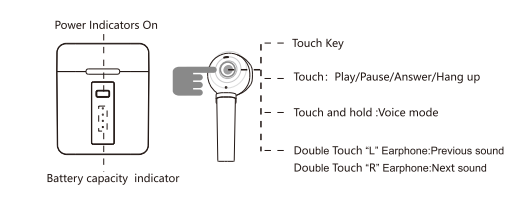
Functions and Operations



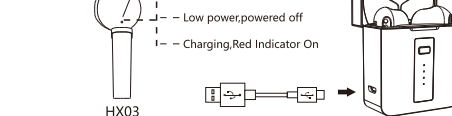
2 BT Pair: Automatically connect Bluetooth when the earphone takes out. Automatic connectivity on HX03 phone. MID PC will not be used to search and pair the Bluetooth device called "HX03" after that connect the earphone. Earphone and HX03 phone Bluetooth connection successfully, voice prompt Connected. Bluetooth disconnection, voice prompt Disconnected.



3 Operation



4 Charging: When the power case has low power, put the earphone in the case and use the type-c charging cable to charge. When the power case has enough power, put the earphone in the case to start charge.



Specification

| | |
|--|----------------|
| True Wireless Earphones Hands-free with microphone | |
| BT Version | V5.0+BR+EDR |
| R.Frequency | 2.4GHz-18.5KHz |
| S/N Ratio | >70db |
| Battery capacity(Earphone) | 40mAh |
| Type-C USB Charging input | 5V 1A |
| Battery capacity(Power case) | 420mAh |
| For each fully charge from power case | 5 Times |
| Music Playing Time | 4.5Hours |
| Talk Time | 3.5 Hours |
| Power Case dimension | 49*23*58.2mm |
| Earphone Speaker Diameter | 13mm 32Ω |
| Accessories: Type-C USB cable, User Manual | |

Safety Precautions

- Do not modify the earphones, or it might be damaged or malfunctioned. Losses due to this reason are not under warranty.
- Keep the earphones dry and keep distance with liquid, or the earphones will be damaged. Losses due to water damage are not under warranty.
- Do not expose the earphones in extreme weather (below 0°C or above 45°C).
- Keep the earphones' indicating light away from children or animals' eyes.
- Do not use the earphones in thunderstorm weather which might cause malfunction and increase the risk of electric shock.

Battery Warning

The product contains built-in lithium battery, to avoid explosion, please do not expose the product under intense sunlight, and keep it away from fire. Unless a special instruction is given in user manual, the lithium battery should not be took out or replaced by or the product might be damaged and cause other dangers. When battery life reached its limit, it should be disposed according to your local laws and regulations, do not dispose it as regular household garbage.

Warranty Card

Warranty period:
Since the date of purchase, returns are acceptable within 7 days and exchanges are acceptable within 15 days. The warranty is valid for 1 year.

Free of charge:
If a malfunction or damage occurs due to quality issues within the warranty period, customer can go to authorized sales agency for free repair with this warranty card and purchasing vouchers.

The followings are not under warranty

- No warranty card or the product maintenance label is damaged;
- Damage due to unauthorized dissembling;
- Man-made damages due to water or falling;
- Damage due to force majeure.

| | | | | |
|--------------|---------|-------|---------------|-------|
| User info | Name | _____ | Email | _____ |
| | Address | _____ | | |
| Product info | Phone | _____ | | |
| | Date | _____ | Serial number | _____ |
| | Model | _____ | Serial number | _____ |
| Sales info | Agency | _____ | | |
| | Address | _____ | | |
| | Phone | _____ | Phone number | _____ |

Remark: (1) This form should be confirmed and stamped by the sales agency.
(2) For product which applies to the "three guarantees" rules, this warranty card equals to three guarantees card.
(3) The maintaining record would be depend on the record of authorized service agencies. Please keep this card after you apply for a service.
Shenzhen Xiyiheng Digital Co., Ltd.,

FCC Warning Statement

Changes or modifications not expressly approved by the party responsible for compliance could void the user's authority to operate the equipment. This equipment has been tested and found to comply with the limits for a Class B digital device, pursuant to Part 15 of the FCC Rules. These limits are designed to provide reasonable protection against harmful interference in a residential installation. This equipment generates uses and can radiate radio frequency energy and, if not installed and used in accordance with the instructions, may cause harmful interference to radio communications. However, there is no guarantee that interference will not occur in a particular installation. If this equipment does cause harmful interference to radio or television reception, which can be determined by turning the equipment off and on, the user is encouraged to try to correct the interference by one or more of the following measures:

- Reorient or relocate the receiving antenna.
- Increase the separation between the equipment and receiver.
- Connect the equipment into an outlet on a circuit different from that to which the receiver is connected.
- Consult the dealer or an experienced radio/TV technician for help.

This device complies with part 15 of the FCC Rules. Operation is subject to the following two conditions: (1) This device may not cause harmful interference, and (2) this device must accept any interference received, including interference that may cause undesired operation.