

# **MoviKit(Children GPS Phone)**

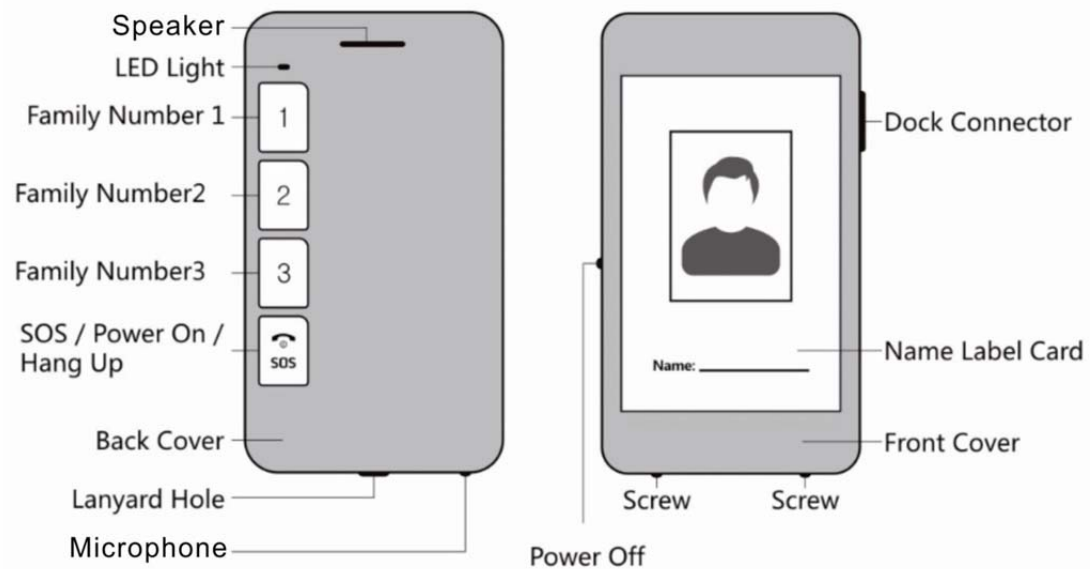
## **User Manual**

### **(Version 1.3)**



# 1 Appearanceand accessories

## 1.1 Appearance

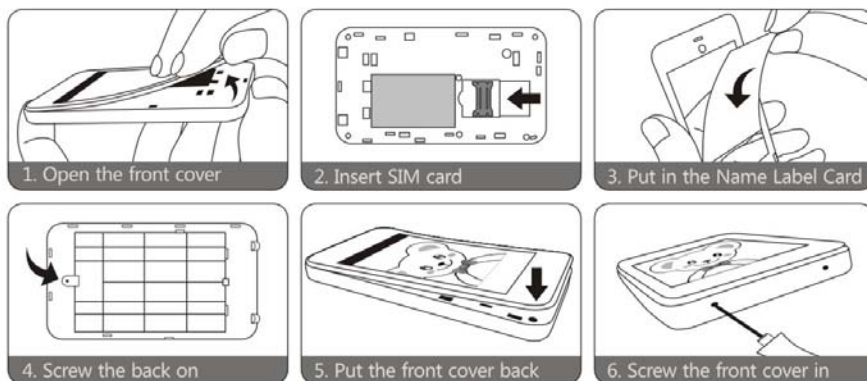


## 1.2 Accessories



The pictures are for reference only.

## 1.3 Quick start



## 1.4 LED indicator

Statue	Green – GSM	Blue – GPS	Red – Power	Purple – Missed SMS/Calls
Dark	No internet/ No SIM card			
Flashing (every 1 second)	GSM is on	Searching for GPS signal	Low battery	Missed SMS/calls
Bright	GPRS is connected	GPS is located	Charging	

Indicated order:

- (1) No internet/ No SIM card
- (2) Missed SMS/calls
- (3) Low battery/ GPS is working
- (4) GPRS is connected
- (5) GSM is on

## 2 Function of buttons

Button	Function
Family Number1	Long press for 2 seconds to call the family number 1 on the standby.
	When someone calls, please press this button to answer it.
Family Number2	Long press for 2 seconds to call the family number 2 on the standby.
	When someone calls, please press this button to answer it.
Family Number3	Long press for 2 seconds to call the family number 3 on the standby.
	When someone calls, please press this button to answer it.

SOS Button	When the device is off, long press to turn it on.
	In standby mode, long pressing the button will call the pre-set SOS numbers in turns for three times until the call is picked up.
	During phone calls, short press to hang up.
	During ringtone setting, when the ringtone is playing, short press to stop.
Power Off	The device can only be turned off when the restricted power off function is off.

**NOTE:**

- (1) In standby mode, long press any Family Numbers to dial the relative number;
- (2) When Family numbers call in, short press any Family Number buttons to answer the phone call;
- (3) During phone calls, long press family numbers can switch between receiver and speaker.

## 3 Before use

### 3.1 Check the accessories

After open the box, please check whether the accessories are complete. If there is anything missing, please contact your supplier.

### 3.2 Operating environment

The device should be operated in the temperature of 0℃-40℃ and in the humidity of 45℃-85℃. The device should be used away from TV, computer, telephone and other office equipment; otherwise the communication may be influenced.

### 3.3 Battery

When the red LED light is flashing, it means the battery is low and needed to be charge. The standby time provided by your supplier is based on an ideal environment, for reference only. The real standby or working time varies from the operating environment and internet statue.

### 3.4 Charging

- (1) Connect the wall charger with the charging cable;
- (2) Open the rubber plug of the dock connector and connect it with the charging cable;
- (3) The charging process will take 3 to 4 hours. In the meanwhile, it is normal that the battery and the device will become hot;
- (4) The device can still be working during charging;

**NOTE:** It is normal that the indicator will light up after few seconds if the device shuts down

because the battery runs out.

Warning: Please charge in a ventilated place with the temperature of 0℃-40 ℃ and use standard charger provided by your supplier. The damage caused by inappropriate charger will be against our warranty.

## 3.5 SIM card

- (1) Turn off the device before you insert or take out your SIM card;
- (2) Open the front cover of the device;
- (3) Insert the SIM card in the SIM card slot with the metal part facing down.

NOTE: Please use a SIM card with GSM network, GPRS and caller ID function.

Warning: Please turn off the device before you insert or take out your SIM card. It is forbidden to do it with external power connected; otherwise your SIM card may be damaged.

## 4 Parameter setting

### 4.1 Set APN

Please send SMS command to the number of device so as to set up the APN parameter. The device will reply "OK" automatically after setting successfully. The SMS command is as follows:

**APN,APN's name#**

E.g. **APN,internet#**

NOTE: The APN of some countries have user name and password, you may need to send SMS command as following:

**APN,APN's name,user name,password#**

E.g. **APN,internet,CLIENTE,AMENA#**

### 4.2 Add SOS Number

#### 4.2.1 Add SOS number Via SMS command

Send SMS command: **SOS,A,number1,number2,number3 #**(A means add number).

You could set 3 SOS numbers in maximum. If set successfully, the terminal will reply "ok".

e.g. **SOS,A,13510\*\*\*\*60,135116\*\*\*\*6,136126\*\*\*\*8#**(set all 3 SOS numbers)

**SOS,A,13510\*\*\*\*60#**(set the first SOS number)

**SOS,A,,135116\*\*\*\*6#**(set the second SOS number)

**SOS,A,,,136126\*\*\*\*8#**(set the third SOS number)

## 4.2.2 Delete SOSNumbersVia SMS command

Send SMS command: **SOS,D,1,2,3#** (D means delete SOS number)

e.g. **SOS,D,1#** means delete the first number

**SOS,D,3#** means delete the third number

If you do not know the sequence number, you can also delete the number by SMS command like this: **SOS,D,number#**

e.g. **SOS,D,13527852360#** means delete this SOS number directly.

It will reply "OK" if the number is deleted successfully.

## 4.2.3 Add SOS numbers via platform

You can set SOS number via the platform after activating the terminal.

# 4.3 Set Family Numbers

## 4.3.1 Add/delete Family Numbers via SMS command

Family numbers can only be added or deleted by the commands sent by SOS numbers.

(1) Add three Family Numbers

Send SMS command: **FN,A,Name1,Phone Number1,Name2,Phone Number2,Name3,Phone Number3#** (A means add numbers)

e.g. **FN,A,Dad,13510\*\*\*360,Mom,1351\*\*\*85136,Grandma,1352\*\*\*9982#**

(2) Add one Family Number

To add the first Family Number, send SMS command: **FN,A,Name1,Phone Number1#**

e.g. **FN,A,Dad,13510\*\*\*360#**

To add the first Family Number, send SMS command: **FN,A,,Name2,Phone Number2#**

e.g. **FN,A,,Mom,1351\*\*\*85136#**

To add the third Family Number, send SMS command: **FN,A,,,Name3,Phone Number3#**

e.g. **FN,A,,,Grandma, 1352\*\*\*9982#**

(3) Delete Family Numbers via SMS

Send SMS command: **FN,D,1,2,3#** (D means delete the number)

1,2,3 means sequence numbers

OR

Send SMS command: **FN,D,Phone Number#**

## 4.3.2 Add/delete Family Numbers via platform

You can set SOS numbers via the platform when the terminal connects to the platform.

## 4.4 Call Family Numbers

Long press Family Number buttons can call preset numbers. Short press SOS button can hang off the call.

NOTE: When the people you call pick up the phone, the terminal will vibrate slightly.

## 4.5 Answer phone calls

When calls come, it will ring or vibrate according to the settings.

The button will light up when relevant Family Numbers call in. If the calls come from the White List, button 1,2 and 3 will light up.

## 4.6 White List

To avoid the situation where students might be interfered, 15 White List numbers can be set on platform.

## 4.7 Anti disturb mode(off as default)

The device has anti-disturb function and its default state is off.

It can be scheduled to be off in class hour. When the device is in off state, no one can call in.

Off Day: School day, Saturday,Sunday

8 Period can be set.

## 4.8 Low battery alarm

SOS number will receive low battery alarm when the device is running out of battery.

## 4.9 Call reminder mode

There are three modes of call reminder: ringtone/ vibration/ ringtone and vibration. It can be set by sending SMS: **CALLMODE,0/1/2#** (0 means ringtone; 1 means vibration; 2 means ringtone and vibration).

e.g. **CALLMODE,1#** means the device will vibrate when calls come in.

NOTE: 10 ringtones can be set on platform.

## 4.10 Power Off Limited function

Send command: **PWRLIMIT,ON#** to turn on the function;

**PWRLIMIT,OFF#** to turn off the function.

NOTE: Only can SOS number turn on/off the function. The function can also be turned on/off on platform.

## 5 SOS alarm

Long press SOS button for 3 seconds can activate GPS. The device will vibrate twice and dial pre-set SOS numbers in turns for three times until one of them answers. In the meanwhile, it will send location to SOS numbers.

NOTE: SOS number should be set.

## 6 GPS working period

If the working period is set, GPS will work during the pre-set period. If the working period is not set, it will not upload GPS data. It is recommended to set working period on the time after classes.

NOTE: Working period should be set on platform.

## 7 Check location

### 7.1 Check by calls

SOS numbers call the device and hang up after 5 seconds will activate GPS. It will upload GPS data to the platform and send location information to SOS numbers. The longest GPS searching time is 5 minutes.

### 7.2 Check by SMS

SOS numbers send command: **WHERE#** to check the coordinates. The device will reply coordinates information.

e.g. Lat:N22.571285,Lon:E113.877115,Course:42.20,Speed:0.0740,DateTime:10-11-23 22:28:51

If GPS is not located at all, the device will reply after 5mins: "NO DATA!"

SOS numbers send command: **URL#**

If GPS is located, it will reply google link of the latest longitude and latitude:

e.g. Google link reply

<DateTime:10-11-23 23:42:51> <http://maps.oogleg.com/maps?q=N22.571490,E113.877103>

If GPS has never been located before, it will reply "NO DATA!" after 5mins.



## 8 Voice monitor

When SOS number sends monitor command: **MONITOR#** to the terminal, the terminal will reply “OK” and call the SOS number. After the call connected, the terminal will enter monitor condition. The SOS number can hear the sound around the terminal.

## 9 Geo-fence (Off as default)

Log in the platform to set the geo-fence. When the device is leaving or entering a pre-set area, it will send alarm to pre-set family number.

## 10 Appendix

### 10.1 Battery security

- Please use the original battery. The warranty will be invalid by using any other accessory. The manufacturer will not take any responsibility for any damage caused by not using the original battery.
- The new battery can realize the optimal performance after fully- charging for 2 or 3 times.
- The battery can be used for hundreds of times, yet it will wear out eventually. When its talking time and standby time shrinks sharply, you need a new one.
- Cut off power supply when not using the charger. Don't charge the battery for more than one week, since over charging will reduce its using time.
- Do not short-circuit the battery with metal stuff (such as the key in your pocket)
- Do not bend or open the battery.
- Do not put the battery into water or fire.
- The battery should never be charged at temperature below 0 degrees or above 45 degrees Celsius.

## 10.2 Trouble shooting

Common problems	Causes	Solutions
Bad reception	Radio waves cannot communicate with device when it is used in a bad signal area, like basement or space besides tall building.	Replace the fuse
	Cannot talk in Call-intensive period.	
Device fails to switch on	No power	
Calls fail to get through	Have not setup the family number for that key.	
Device fails to connect to the network	SIM card installed incorrectly	Check the SIM card
	The sheet metal of SIM card is dusty	Wipe with a clean wiper.
	Invalid SIM card	Contact your internet service provider
	Out of GSM service area	Move back to the GSM service covered area.
	Weak signal	Try again in a strong signal area
Device fails to be charged	Voltage is out of charging range of charger.	Change to the proper voltage
	Use non-standard charger	Use charger that come with the package
	Poor contact	Check if the plug is in.
Fail to check location information	SIM card does not support GPRS functions	Please contact SIM card sell service to activate GPRS functions
	Reply "not receiving data, please try again" all the time	Please contact with your distributors or selling services
	Cannot check with none preset family numbers	Please set your phone number as family number

**FCC Warning:**

This device complies with part 15 of the FCC Rules. Operation is subject to the following two conditions: (1) This device may not cause harmful interference, and (2) this device must accept any interference received, including interference that may cause undesired operation.

Any Changes or modifications not expressly approved by the party responsible for compliance could void the user's authority to operate the equipment.

This equipment has been tested and found to comply with the limits for a Class B digital device, pursuant to part 15 of the FCC Rules. These limits are designed to provide reasonable protection against harmful interference in a residential installation. This equipment generates uses and can radiate radio frequency energy and, if not installed and used in accordance with the instructions, may cause harmful interference to radio communications. However, there is no guarantee that interference will not occur in a particular installation. If this equipment does cause harmful interference to radio or television reception, which can be determined by turning the equipment off and on, the user is encouraged to try to correct the interference by one or more of the following measures:

- Reorient or relocate the receiving antenna.
- Increase the separation between the equipment and receiver.
- Connect the equipment into an outlet on a circuit different from that to which the receiver is connected.
- Consult the dealer or an experienced radio/TV technician for help.

The SAR limit of USA (FCC) is 1.6 W/kg averaged over one gram of tissue. Device types BNK-MOV01 (FCC ID: 2AG9H-BNKM0V01) has also been tested against this SAR limit. The highest reported SAR values for head, body-worn accessory are 0.45 W/kg, 0.23 W/kg respectively. This device was tested for typical body-worn operations with the back of the handset kept 10mm from the body. To maintain compliance with FCC RF exposure requirements, use accessories that maintain a 10mm separation distance between the user's body and the back of the handset. The use of belt clips, holsters and similar accessories should not contain metallic components in its assembly. The use of accessories that do not satisfy these requirements may not comply with FCC RF exposure requirements, and should be avoided.

This device can be used as normal mobile phone, it is a portable device, the users can take phones by it and used near body.